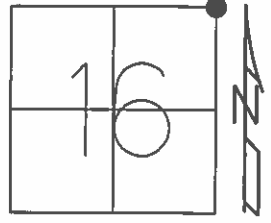


O.D.O.T. DISTRICT 2 SURVEY OFFICE (USE ONLY)

PERSONNEL _____ REFERENCE NO. 33 SHEET 45 OF 64

NOTES _____ RHOADES _____ DATE 8-20-15 ROUTE SR 19
 H.C. _____ O'DONNELL _____ WEATHER FAIR COUNTY SENECA
 R.C. _____ RHOADES _____ TEMP. 64°F TOWNSHIP BLOOM
 _____ SECTION 16
 T 1 N R 16 E

TYPE MONUMENT PK/WASHER
 ON SURFACE - ~~BELOW~~ ON _____
 LEFT - ☉ PAV'T - RIGHT ON
10' TO RT' EDGE PAVEMENT
 S.L.M. 214+63.81



Grid: Northing: 505168.1053 Easting: 1826369.8441

RECORD
 P.I. 00°03'00" RT.
 STA. 214+47.61
 RR.SPK 2" BELOW
 10-08-85

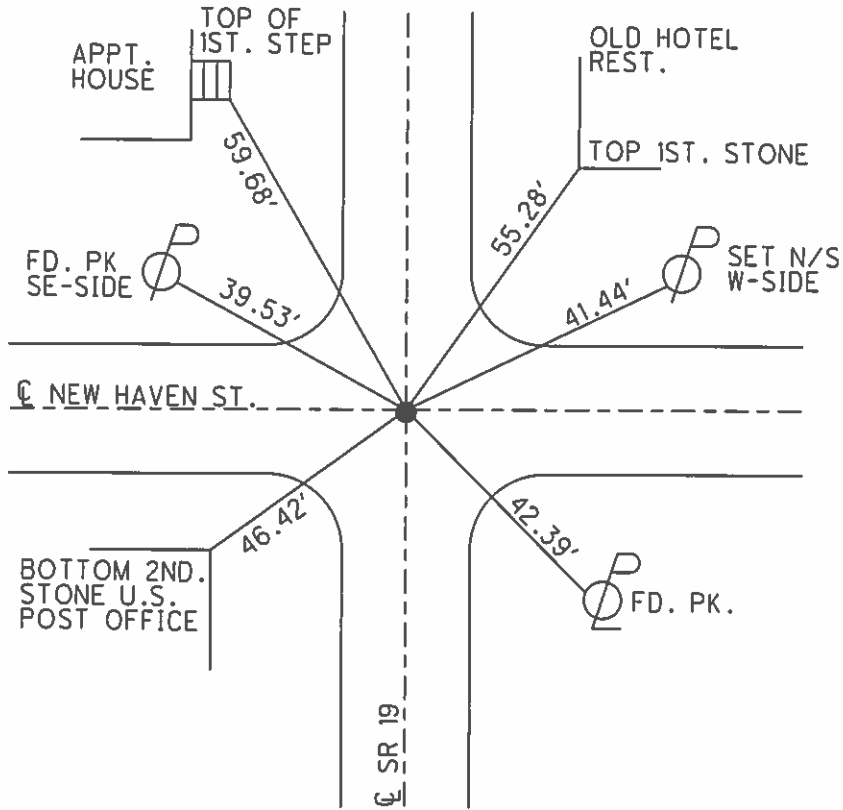
SET PK/WASHER
 09-28-92, JLR

FD PK/WASHER
 12-5-13, JMR

FD PK/WASHER
 GPS, REF33
 01-14-13, EBW

GPS REF33
 8-20-15

FD. MAG
 GPS, NEWREF33
 7-21-16



O.D.O.T. DISTRICT 2 SURVEY OFFICE (USE ONLY)

PERSONNEL _____

REFERENCE NO. 33

SHEET 45 OF 62

NOTES CANTERBURY

DATE 04-20-06

ROUTE SR 19

H.C. MICKLOVICK

WEATHER FAIR

COUNTY SENECA

R.C. HANKE

TEMP. +70°

TOWNSHIP BLOOM

SECTION 16

T 1 N R 16 E

TYPE MONUMENT FD. PK/WASHER

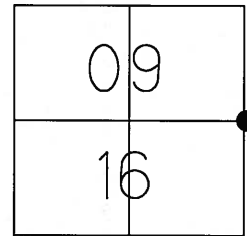
ON SURFACE - ~~BELOW~~ ON SURFACE

~~LEFT~~ - C PAV'T - ~~RIGHT~~ ON CL. SR.#19

10' TO RT. EDGE OF CURB

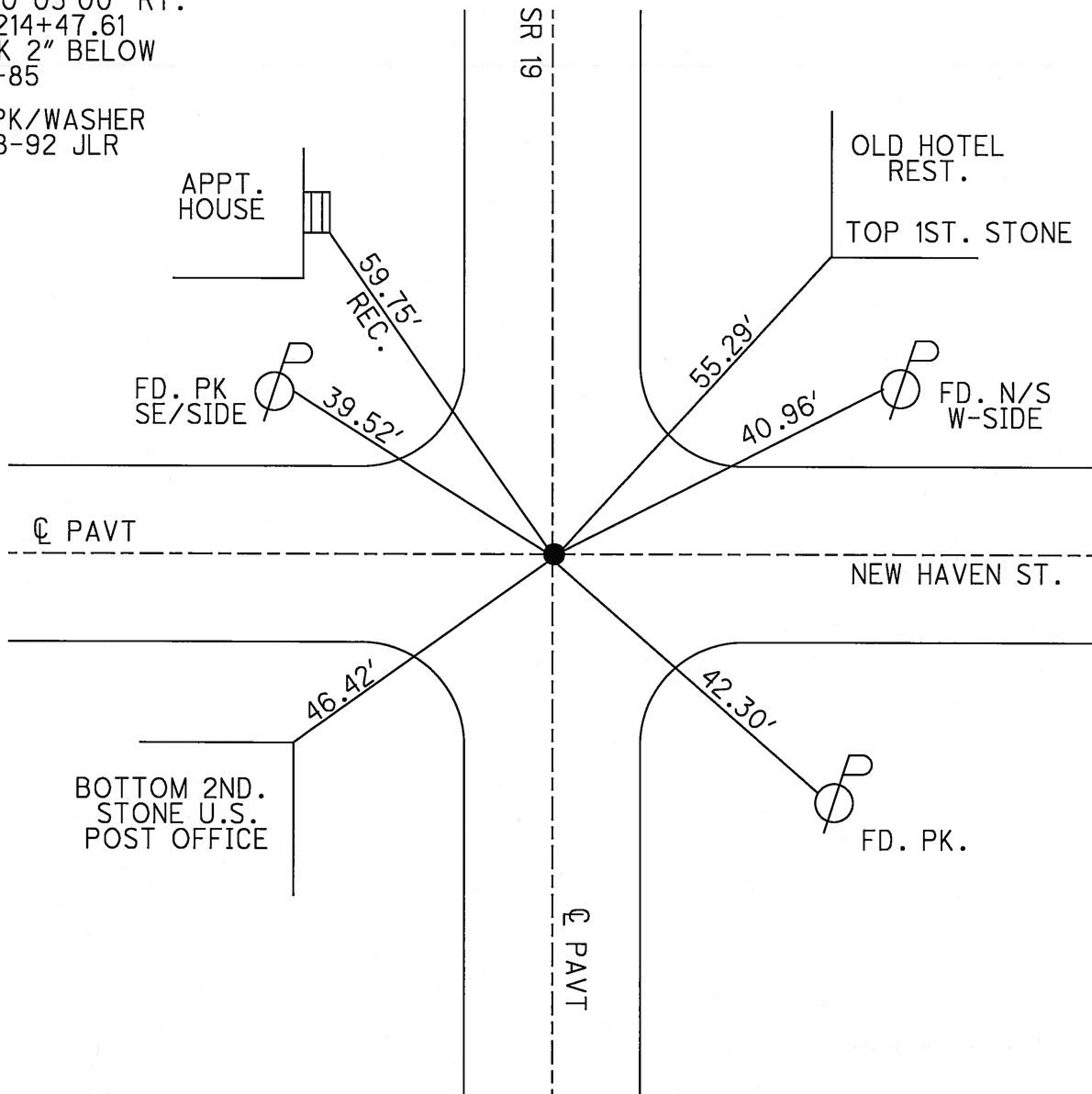
S.L.M. 214+38 (SV45)

Grid: Northing: _____ Easting: _____



RECORD
P.I. 00°03'00" RT.
STA. 214+47.61
RR.SP.K 2" BELOW
10-08-85

SET PK/WASHER
09-28-92 JLR



O.D.O.T. DISTRICT 2 SURVEY OFFICE

PERSONNEL

REFERENCE NO. 33

SHEET 39 OF 53

NOTES Cheney

H.C. RIPPLE

R.C. BARBOUR

Geyman

DATE 6-23-1992

WEATHER CLOUDY

TEMP. 53°

ROUTE #19

COUNTY SENECA

TOWNSHIP BLOOM

SECTION 9, 10, 15, 16

T. 1 N. R. 16 E

TYPE MONUMENT PK/WASHER

ON SURFACE - ~~BELOW~~ ON

~~LEFT~~ - RIGHT PAV'T. - yes

10' TO RT. EDGE PAVEMENT

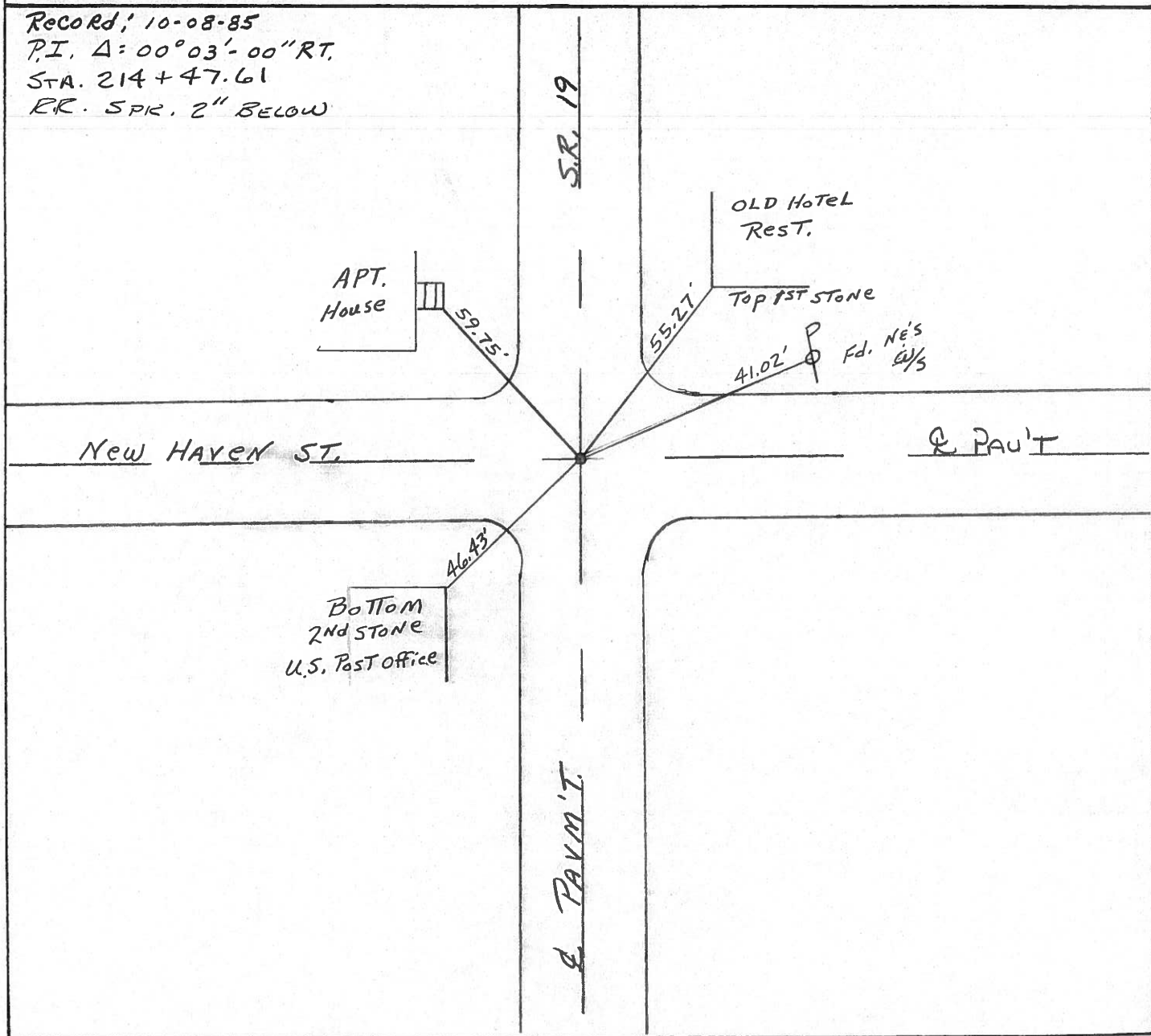
S.L.M. 214+35

SET PK/WASHER
9-28-1992
J.L.R.

9	10
16	15



Record; 10-08-85
P.I. Δ: 00°03'-00" RT.
STA. 214+47.61
PK. SPR. 2" BELOW



O.D.O.T. DISTRICT 2 SURVEY OFFICE

PERSONNEL

REFERENCE NO. 33

SHEET 39 OF

NOTES Cronin Vac.

DRAWN 10/22/85

H.C. RIPPLE

DATE 10/8/85

R.C. BARBOUR

WEATHER SUNNY

GEYMAN

TEMP.

ROUTE #19

COUNTY Seneca

TOWNSHIP Bloom

SECTION 9, 10, 15, 16

T. 1 N R 16 W

TYPE MONUMENT R.R. SPIKE

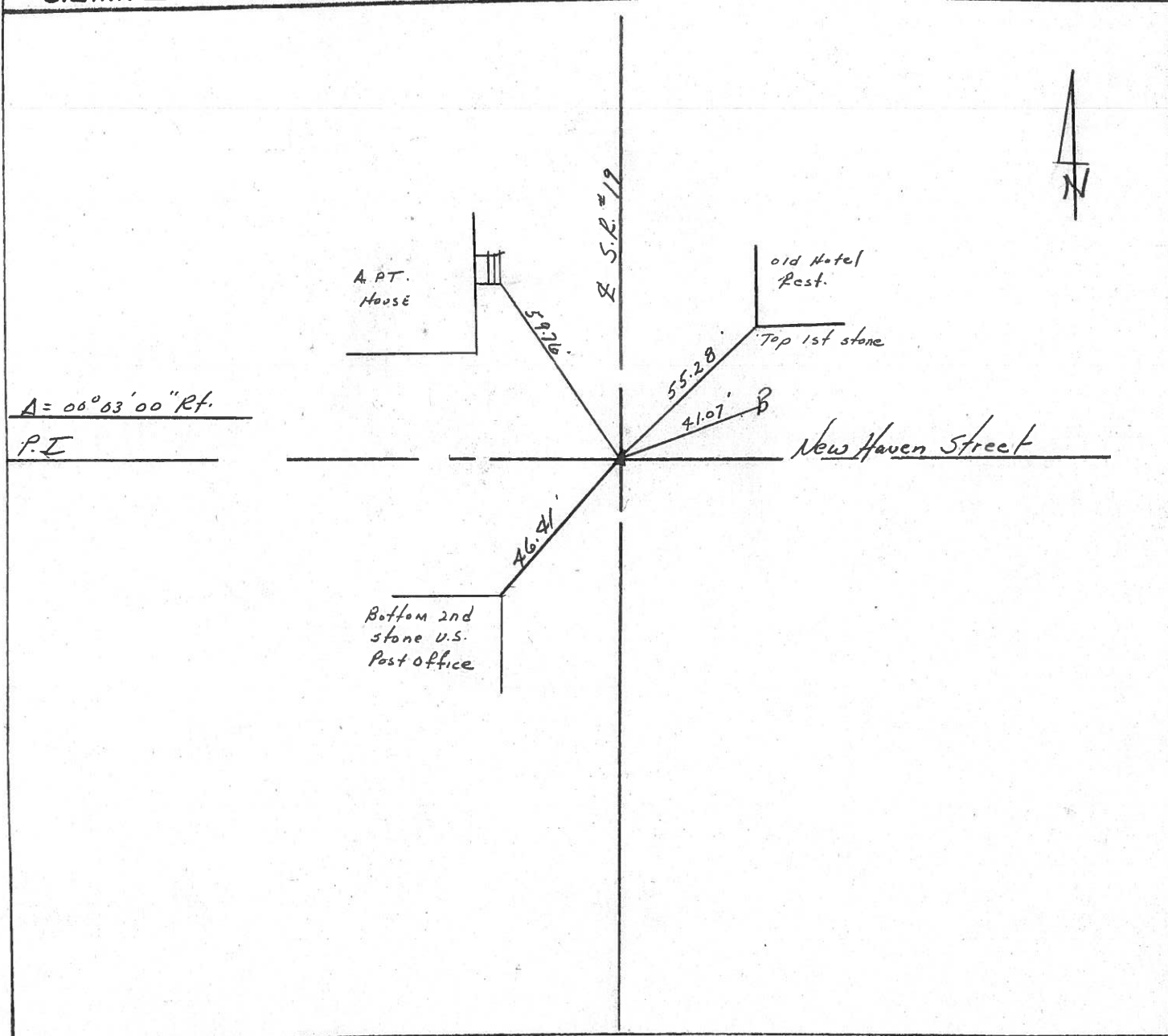
ON SURFACE - BELOW 2" BELOW

LEFT - ☉ PAV'T. - RIGHT ☉ PAV'T.

TO EDGE PAVEMENT

S.L.M. 214 + 47.61

9	10
16	15



County SENECA S.R. #19

Date 7/18/79

Township BLOOM

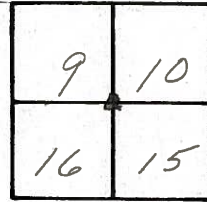
Weather cloudy

Section Corner 9, 10, 15 & 16

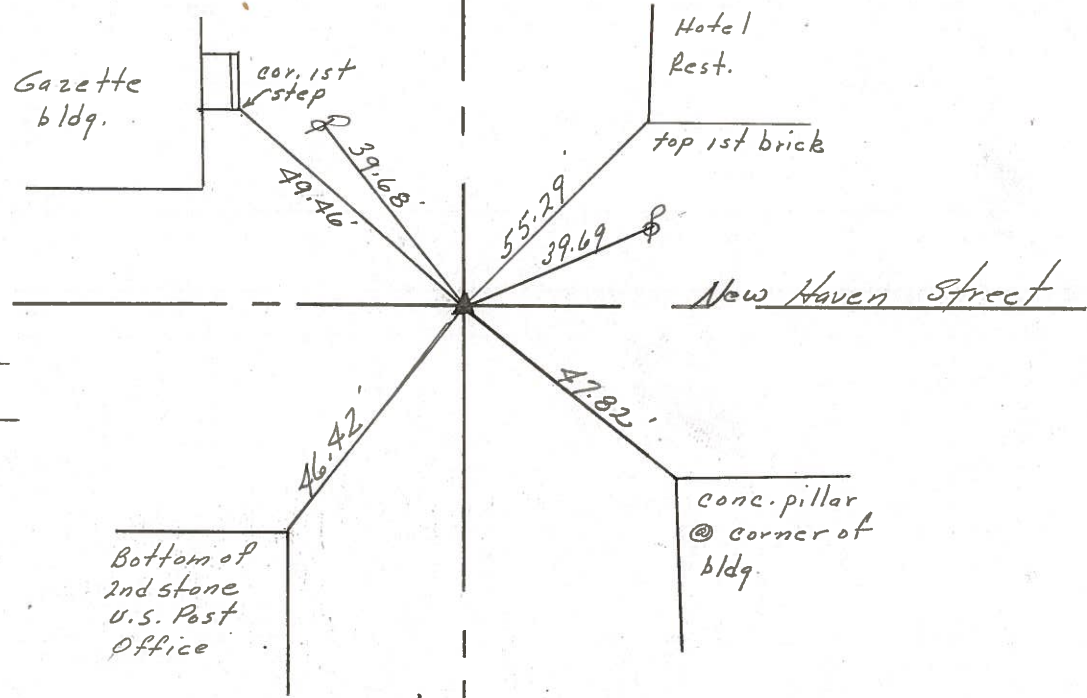
Temp. 69°

T1N, R16E

Personnel Cronin
Ripple
Geyman



33



? I - Δ = 00°03' Rt. Plan
14 + 47.61 S.L.M.
Ed. R.R. spike
on surface

6/25/79

PERSONNEL TITLE PERSONNEL TITLE

Ash
Cranin
Ripple
Anderson

COUNTY Seneca

S. R. #19

WEATHER cloudy

SEC.

TEMP. 45°

DESCRIPTION Ties for Control Points - Village of Bloomville

JOB NO.

LEFT

CENTER LINE

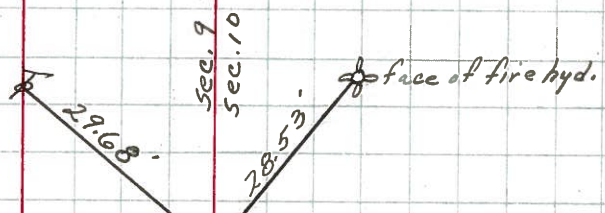
RIGHT

33-A

217+48.37 S.L.M.

Bloom Twp.

Did not make temp. corrections



top 1st block
Car. House #24

$\Delta = 0^{\circ} 03' \text{ Rt.}$

P.I.

214+47.61 S.L.M.

Fd. R.R. spike on

surface

#33

Bloom Twp.

bot Com 2nd stone
foundation - U.S.
Post Office

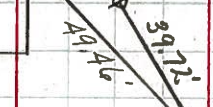
Gazette

cor. 1st step

Hotel
top 1st block

New Haven St.

drill hole in walk
@ cor. of bldg.

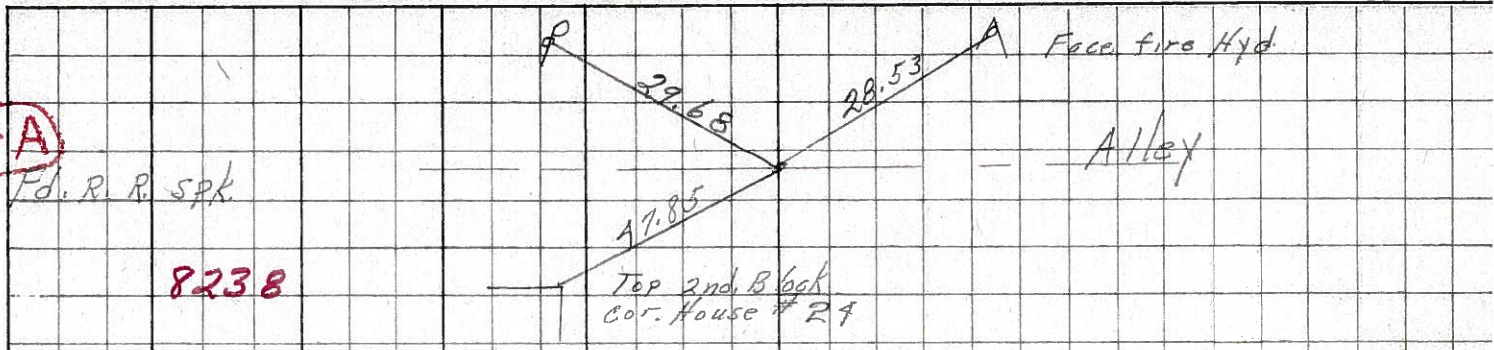


sec. 9
sec. 10

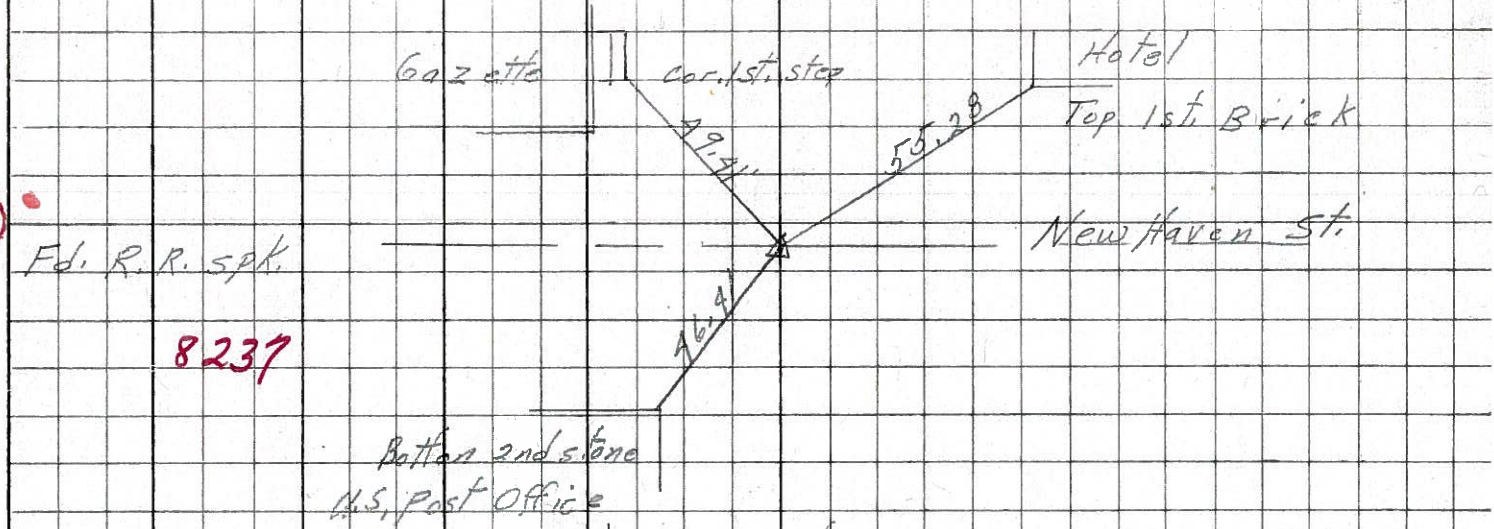
sec. 16
sec. 15

PERSONNEL	TITLE	PERSONNEL	TITLE	COUNTY	DATE	WEATHER	TEMP.
Schneider				Seneca	7-28-69	Fair	75°
Mosser				S. R. 19			
Barbour				SEC. Bloomville			
Potts							
DESCRIPTION				Ties for Control Points		JOB NO.	

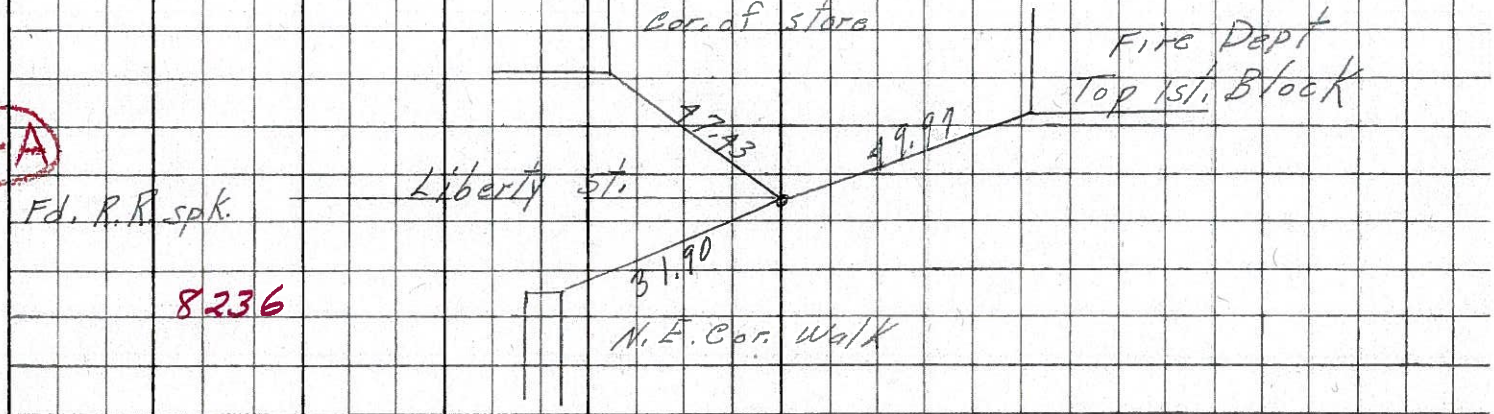
33-A



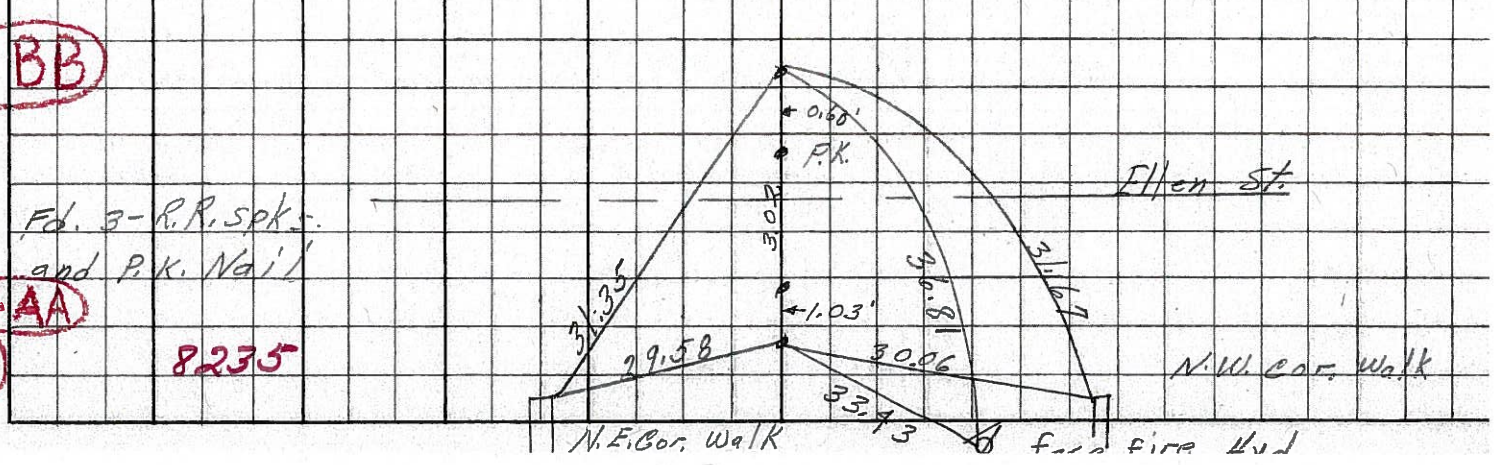
33



32-A



32-BB



32-AA

32

PERSONNEL TITLE PERSONNEL TITLE

Msh

COUNTY Seneca

DATE Apr. '62

& Crew

S. R. #19 Bloatville

WEATHER Clear

SEC. Sen.-19 (3.56-4.41)

TEMP 60°

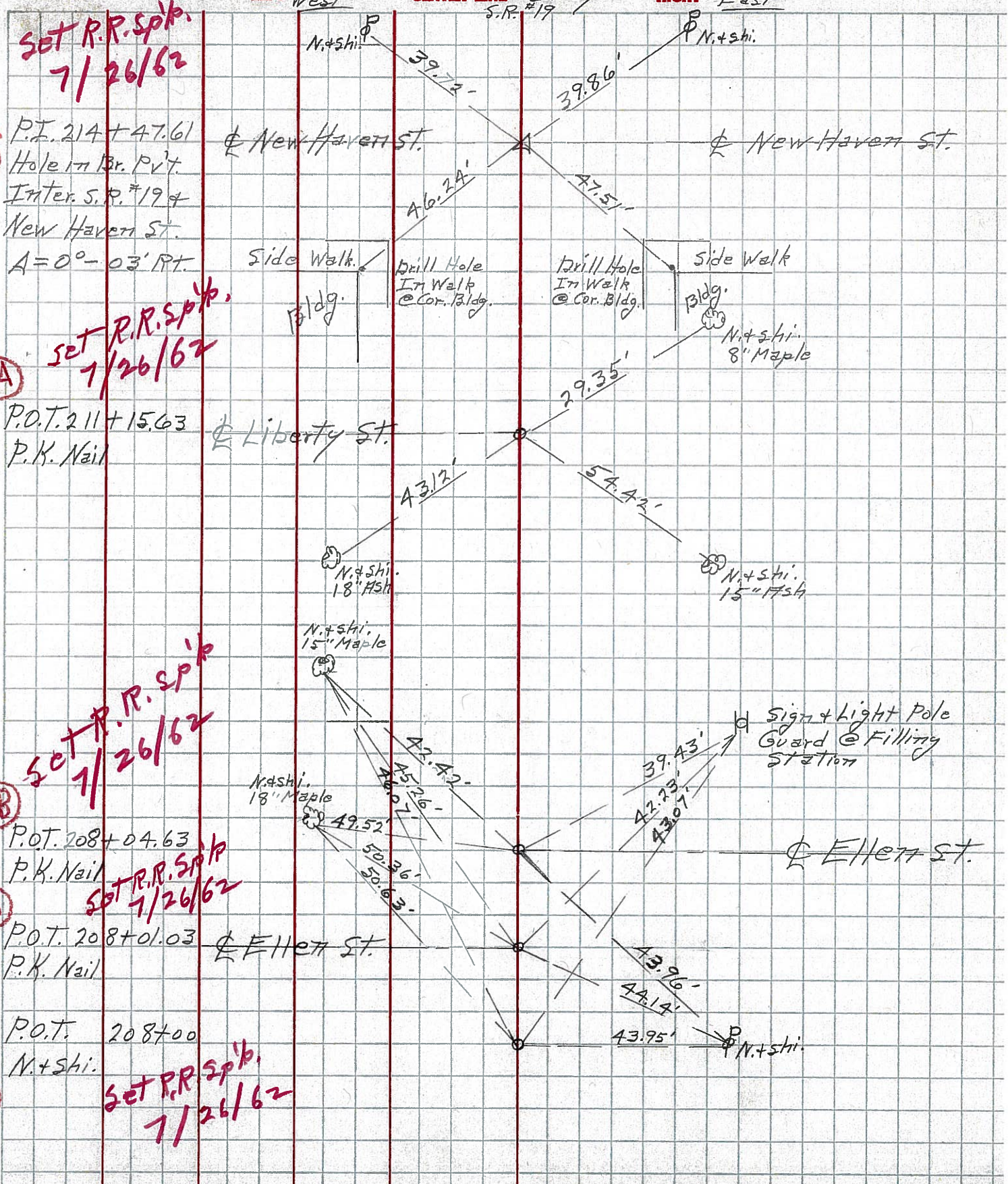
DESCRIPTION Control Point & Inter. Ties

JOB NO. Const.

LEFT West

CENTER LINE - Survey S.R. #19

RIGHT East



33

32-A

32-BB

32-AA

32

Set R.R. Spk. 7/26/62

Set R.R. Spk. 7/26/62

Set R.R. Spk. 7/26/62

Set R.R. Spk. 7/26/62

Set R.R. Spk. 7/26/62

P.I. 214 + 47.61
Hole in Br. P.V.T.
Inter. S.R. #19 &
New Haven St.

P.O.T. 211 + 15.63
P.K. Nail

P.O.T. 208 + 04.63
P.K. Nail

P.O.T. 208 + 01.03
P.K. Nail

P.O.T. 208 + 00
N.+shi.

New Haven St.

Liberty St.

New Haven St.

Ellen St.

Side Walk

Drill Hole
In Walk
@ Cor. Bldg.

Drill Hole
In Walk
@ Cor. Bldg.

Side Walk

N.+shi.
8" Maple

N.+shi.
18" Hsh

N.+shi.
15" Maple

N.+shi.
15" Hsh

N.+shi.
18" Maple

Sign & Light Pole
Guard @ Filling
Station

PERSONNEL TITLE PERSONNEL TITLE

COUNTY Seneca DATE Apr. '62

S. R. #19 Bloomville WEATHER Clear

SEC. Sen-19(356-441) TEMP 60°

DESCRIPTION Control Point + Inter. Ties JOB NO. Const.

LEFT West CENTER LINE - Survey S.R. #19 RIGHT East

33

P.I. 211 + 47.61
Hole in Br. Pavt
Inter. S.R. #19 +
New Haven St.
A = 0° - 03' RT

New Haven St.

New Haven St.

32-A

P.O.T. 211 + 15.63
P.K. Nail

Liberty St.

32-BB

P.O.T. 208 + 04.63
P.K. Nail

Ellen St.

32-AA

P.O.T. 208 + 01.03
P.K. Nail

Ellen St.

32

P.O.T. 208 + 00
N + Shi.

