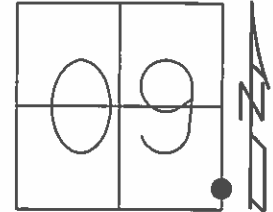


O.D.O.T. DISTRICT 2 SURVEY OFFICE (USE ONLY)

PERSONNEL _____ REFERENCE NO. 33 A SHEET 46 OF 64
 NOTES RHOADES DATE 8-20-2015 ROUTE SR 19
 H.C. O'DONNELL WEATHER FAIR COUNTY SENECA
 R.C. RHOADES TEMP. 64°F TOWNSHIP BLOOM
 _____ SECTION 9
 _____ T 1 N R 16 E

TYPE MONUMENT PK/WASHER
 ON SURFACE - ~~BELOW~~ ON
 LEFT - ☉ PAV'T - RIGHT ON
10' TO RT. EDGE PAVEMENT
 S.L.M. 217+66.30



Grid: Northing: 505470.5983 Easting: 1826374.0021

RECORD P.O.T.
 STA. 217+48.37
 PK/WASHER
 ATOP MINE SPK.
 10-08-85

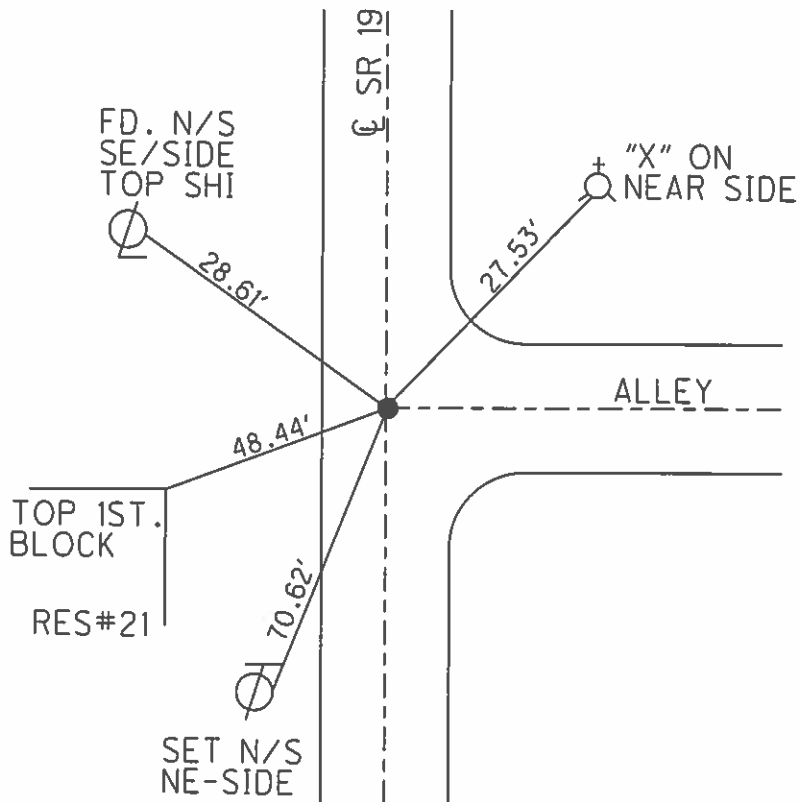
SET PK/WASHER
 09-28-92, JLR

FD. PK
 12-5-13, JMR

FD. PK
 GPS, REFA33
 01-14-13, EBW

FD POINT DESTROYED
 TIES CROSS
 SET AFTER PAVING
 8-20-15

SET MAG/WASHER
 GPS, NEWREFA33
 7-21-16, JFO



O.D.O.T. DISTRICT 2 SURVEY OFFICE (USE ONLY)

PERSONNEL _____

REFERENCE NO. 33A

SHEET 46 OF 62

NOTES CANTERBURY

DATE 04-20-06

ROUTE SR 19

H.C. MICKLOVICK

WEATHER FAIR

COUNTY SENECA

R.C. HANKE

TEMP. +70°

TOWNSHIP BLOOM

SECTION 16

T 1 N R 16 E

TYPE MONUMENT FD. PK/WASHER

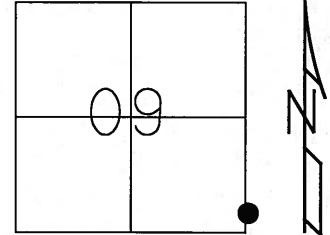
ON SURFACE - ~~BELOW~~ ON SURFACE

~~LEFT~~ - C PAV'T - ~~RIGHT~~ ON CL. SR.#19

10' TO RT. EDGE OF CURB

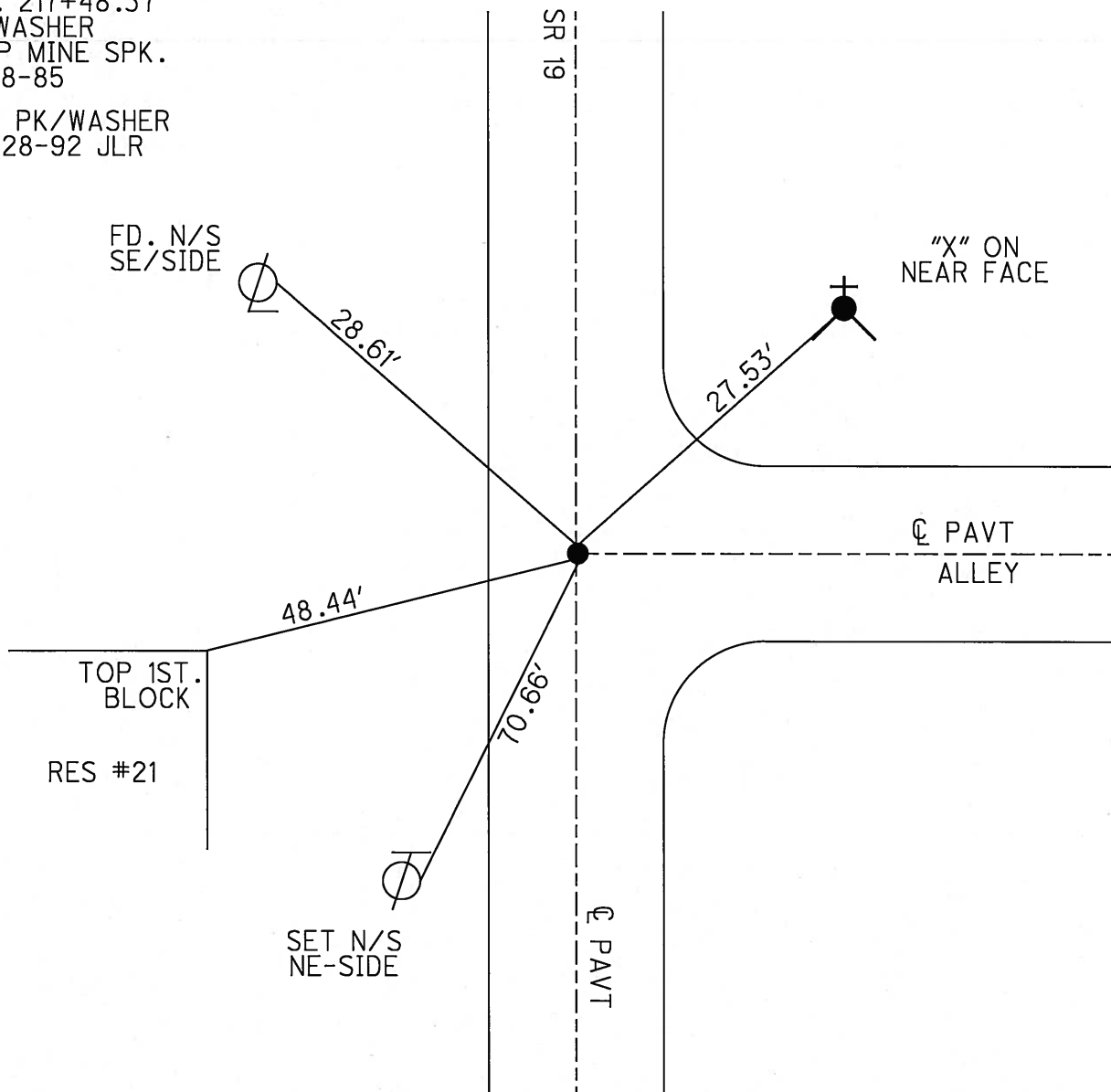
S.L.M. 217+42 (SV46)

Grid: Northing: _____ Easting: _____



RECORD P.O.T.
STA. 217+48.37
PK/WASHER
ATOP MINE SPK.
10-08-85

SET PK/WASHER
09-28-92 JLR



O.D.O.T. DISTRICT 2 SURVEY OFFICE

PERSONNEL

REFERENCE NO. 33-A

SHEET 40 OF 53

NOTES Cheney

H.C. RIPPLE

R.C. BARBOUR

Geyman

DATE 6-23-1992

WEATHER Cloudy

TEMP. 53°

ROUTE #19

COUNTY Seneca

TOWNSHIP Bloom

SECTION 9

T1 N R 16 E

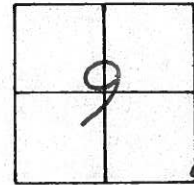
TYPE MONUMENT PK/WASHER

ON SURFACE - ~~BELOW~~ YES

~~LEFT - C~~ PAV'T. - RIGHT ON

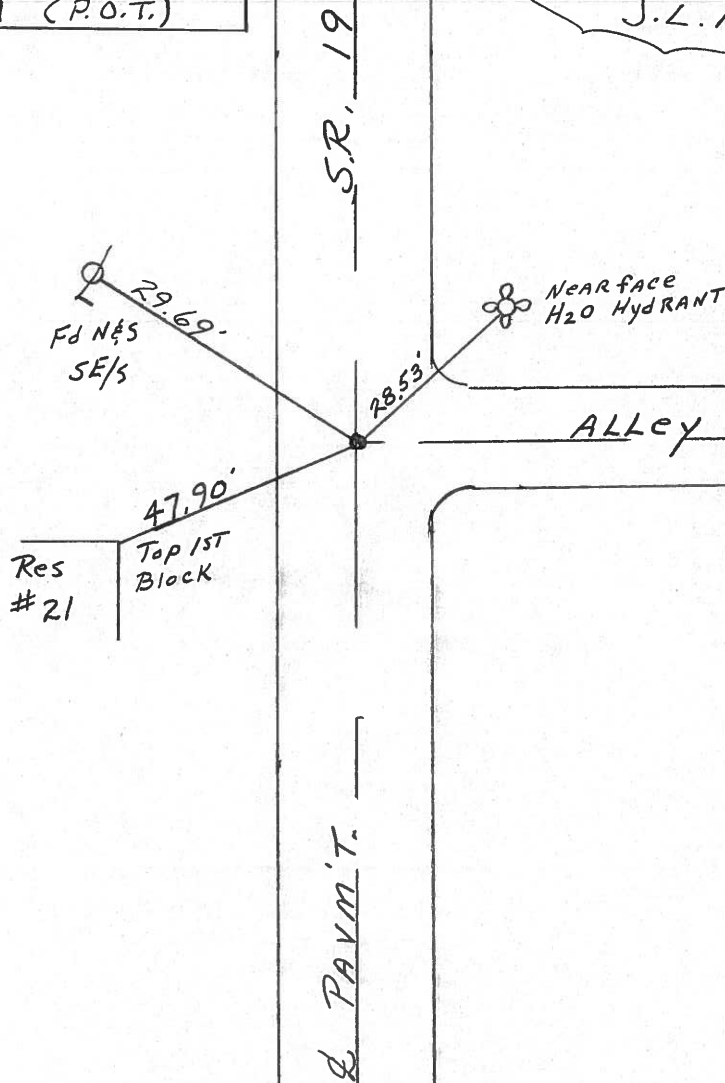
10' TO Rt. EDGE PAVEMENT

S.L.M. 217+34



RECORD: 10/8/1985
 PK/WASHER ATOP MINE SPK.
 STA. 217+48.37 (P.O.T.)

SET PK/WASHER
 9-28-1992
 J.L.R.



O.D.O.T. DISTRICT 2 SURVEY OFFICE

PERSONNEL

REFERENCE NO. _____

SHEET 40 OF _____

NOTES CROWN VAC

DRAWN 10/23/85

H.C. RIPPLE

DATE 10/8/85

ROUTE #19

R.C. BARBOUR

WEATHER SUNNY

COUNTY SENECA

GEYHAN

TEMP. 63°

TOWNSHIP Bloom

SECTION 9

T. 1 N R. 16 E

TYPE MONUMENT P.K. WASHER ATOP MINE SPIKE

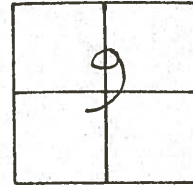
ON SURFACE - BELOW ON SURFACE

LEFT - & PAV'T. - RIGHT & PAV'T.

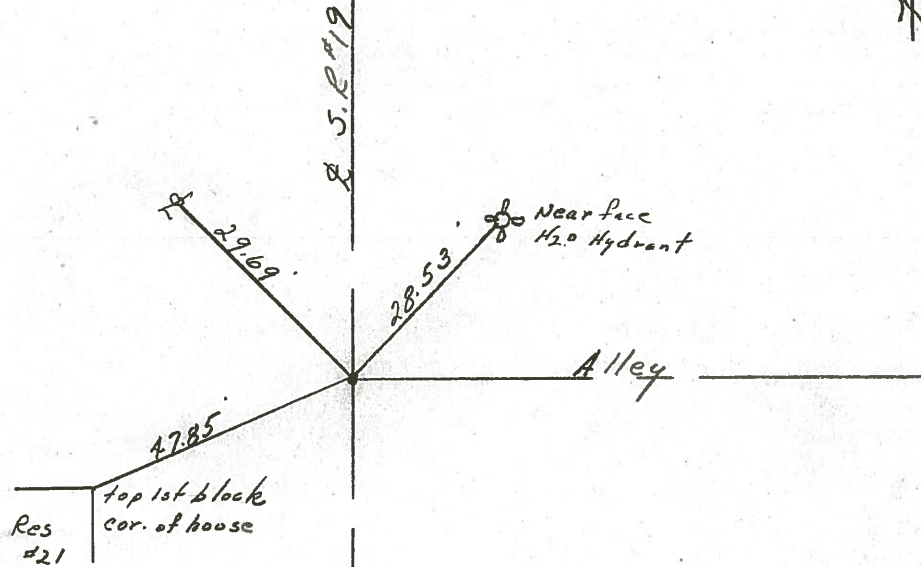
TO EDGE PAVEMENT

S.L.M. 217+48.37

33-A



P.O.T.



PERSONNEL TITLE PERSONNEL TITLE

Ash
Cronin
Ripple
Anderson

COUNTY Seneca

S. R. #19

WEATHER cloudy

SEC.

TEMP. 45°

DESCRIPTION Tics for Control Points - Village of Bloomville

JOB NO.

LEFT

CENTER LINE

RIGHT

33-A

217+48.37 S.L.M.

Did not make temp. corrections

Bloom Twp.

29.68'

sec. 9
sec. 10

face of fire hyd.

28.53'

Alley

47.85'

top 1st block
cor. House #24



Gazette

cor. 1st step

sec. 9
sec. 10

Hotel
top 1st block

$\Delta = 0^{\circ} 03' Rt.$

P.I.

214+47.61 S.L.M.

Fd. R.R. spike on
surface

#33

49.46'

39.72'

55.32'

39.76'

New Haven St.

Bloom Twp.

46.40'

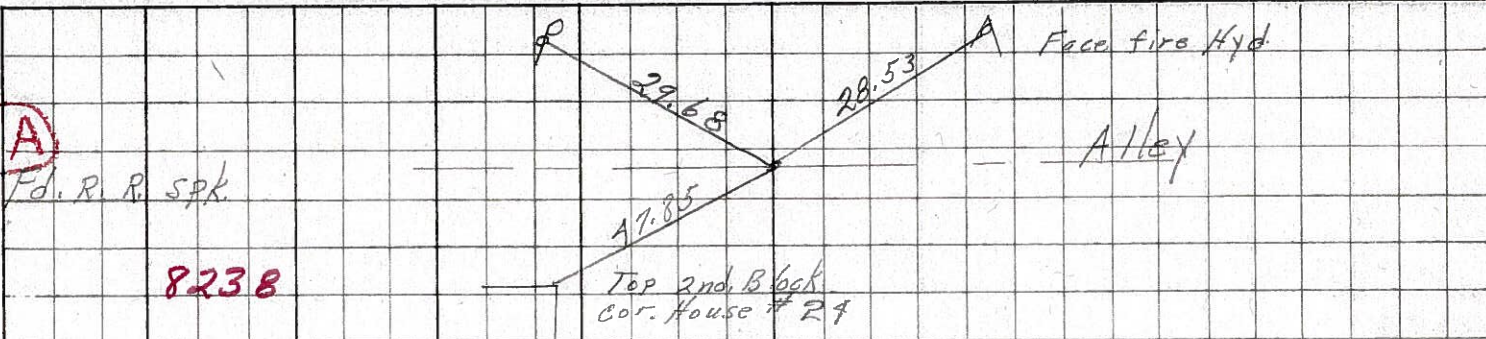
sec. 16
sec. 15

drill hole in walk
@ cor. of bldg.

bottom 2nd stone
foundation - U.S.
Post Office

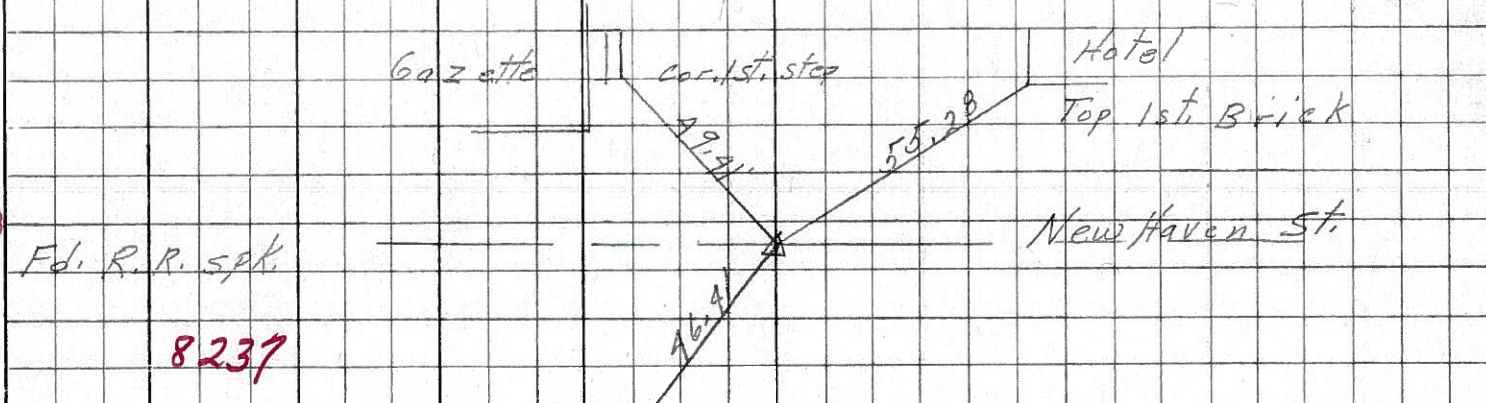
PERSONNEL	TITLE	PERSONNEL	TITLE	COUNTY	DATE
Schneider				Seneca	7-28-69
Mosser				S. R. 19	WEATHER Fair
Barbour				SEC. Bloomville	TEMP. 75°
Potts					
DESCRIPTION Ties for Control Points				JOB NO.	

33-A



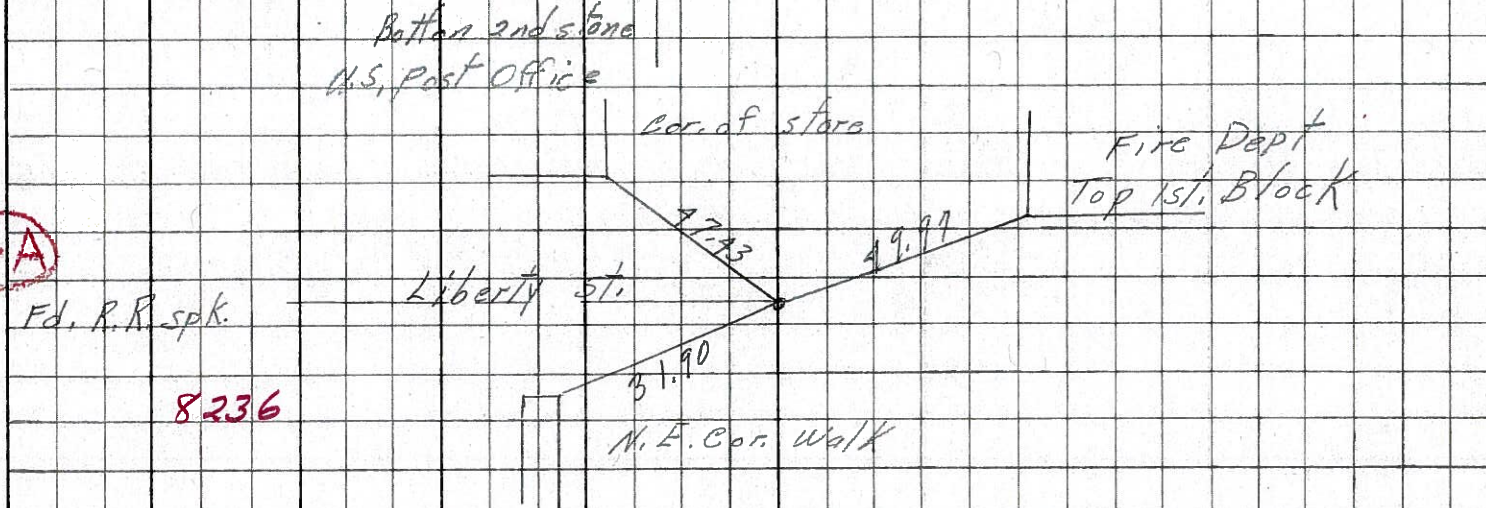
8238

33



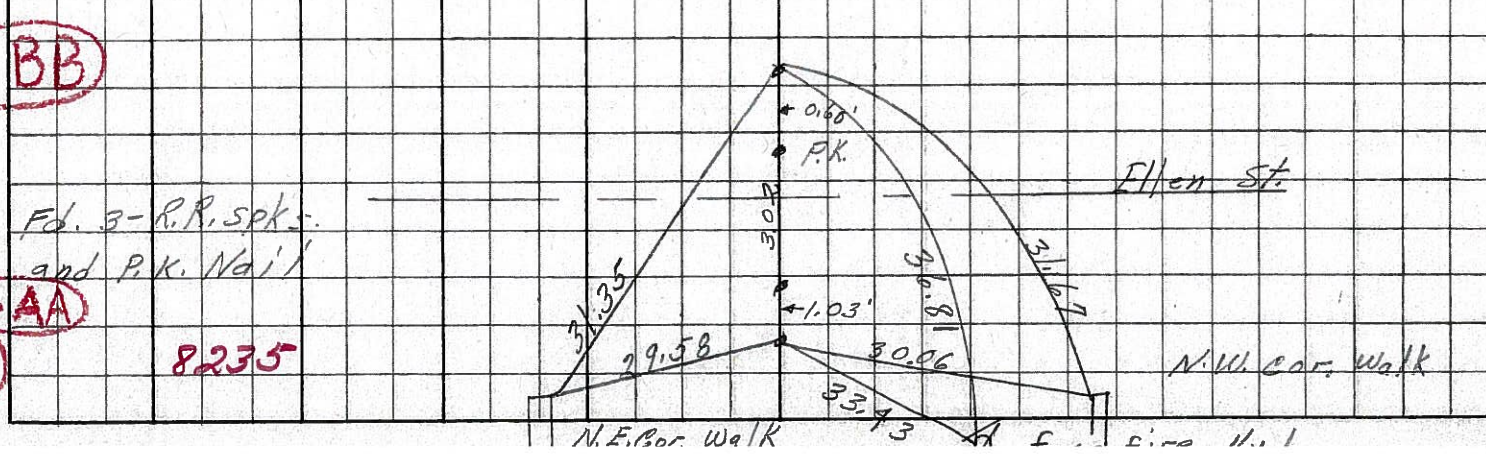
8237

32-A



8236

32-BB



8235

32-AA

32

PERSONNEL TITLE PERSONNEL TITLE

Hsh

COUNTY Seneca

DATE Apr. '62

&
Crew

S. R. #19 Bloomville

WEATHER Clear

SEC. Sen.-19(3.56-4.41)

TEMP. 60°

DESCRIPTION

Control Point & Inter. Ties

JOB NO. Const.

LEFT West

CENTER LINE - Survey

RIGHT East

S.R. #19

33-D

Set R.R. Spk
7/26/62

P.O.T. 224+43.85

P.K. Nail

Set R.R. Spk.
7/26/62

Steel Rail
Set In
Conc.

N. & Shi.
18" Maple

45.44'

38.92'

57.60'

42.89'

50.71'

North St.

N. & Shi.
12" Walnut

P.O.T. 223+73.19

P.K. Nail

East St.

N. & Shi.
18" Maple

32.99'

33-C

Set R.R. Spk.
7/26/62

P.O.T. 220+31.55

P.K. Nail

Kotler St.

N. & Shi.
15" Maple

28.80'

32.75'

47.60'

58.93'

N. & Shi.
24" Maple

Bot. Brick
Shrub Bed
Cor.

33-B

Set R.R. Spk.
7/26/62

P.O.T. 217+48.37

P.K. Nail

Filling station
& Recreation
Hall

N. & Shi.
20" Maple

49.34'

34.41'

27.23'

Alley

N. & Shi.
8" Ash

33-A

N. & Shi.
30" Maple

N. & Shi.
15" Maple

PERSONNEL TITLE PERSONNEL TITLE

COUNTY Semeca DATE Apr. '62

S. R. #19 Bloomville WEATHER Clear

SEC. Sen-19 (3.56-4.41) TEMP. 60°

DESCRIPTION Control Points & Inter. Ties JOB NO. Const.

LEFT West CENTER LINE Survey S.R. #19 RIGHT East

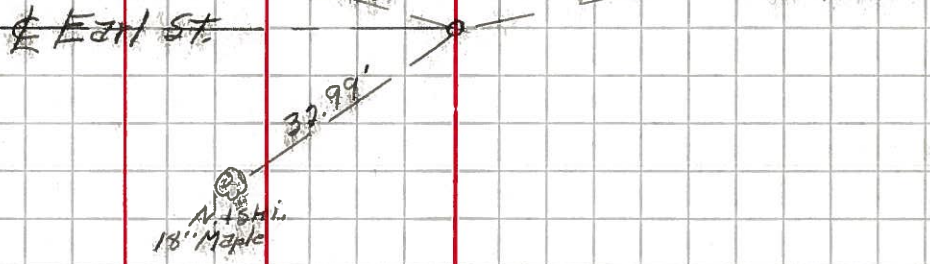
33-D

P.O.T. 224+43.85
P.K. Nail



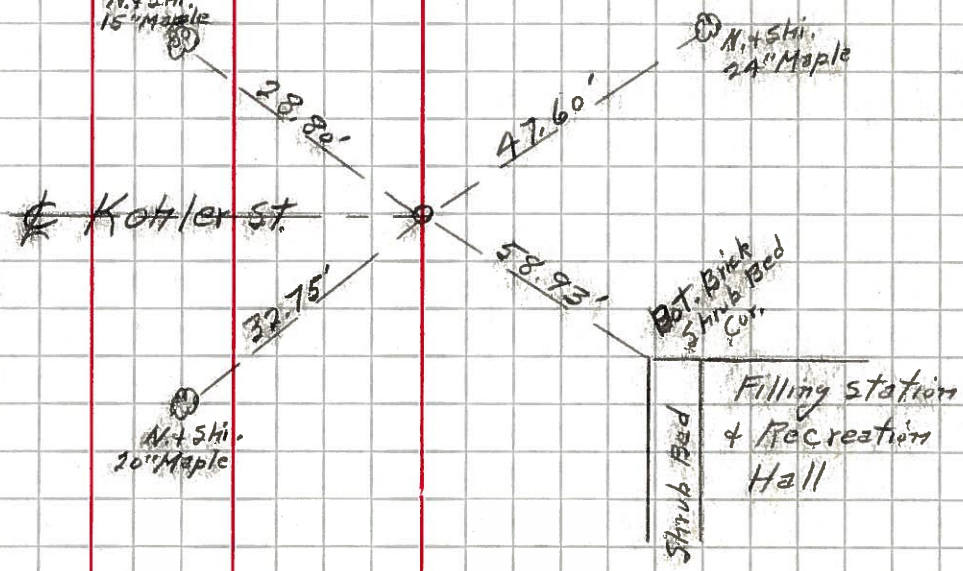
33-C

P.O.T. 223+73.19
P.K. Nail



33-B

P.O.T. 220+31.55
P.K. Nail



33-A

P.O.T. 217+48.37
P.K. Nail

