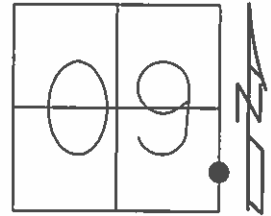


O.D.O.T. DISTRICT 2 SURVEY OFFICE (USE ONLY)

PERSONNEL _____ REFERENCE NO. 33 B SHEET 47 OF 64
 NOTES RHOADES DATE 8-20-15 ROUTE SR 19
 H.C. O'DONNELL WEATHER FAIR COUNTY SENECA
 R.C. RHOADES TEMP. 64°F TOWNSHIP BLOOM
 _____ SECTION 9
 _____ T 1 N R 16 E

TYPE MONUMENT MINE SPIKE
~~ON SURFACE~~ - BELOW 4"
 LEFT - ☉ PAV'T - ~~RIGHT~~ 0.5'
9.5' TO LT. EDGE PAVEMENT
 S.L.M. 220+47.70



Grid: Northing: 505751.873 Easting: 1826377.7595

RECORD STA. 220+31.55
 PK./WASHER
 ATOP RR.SP.K.
 10-08-85

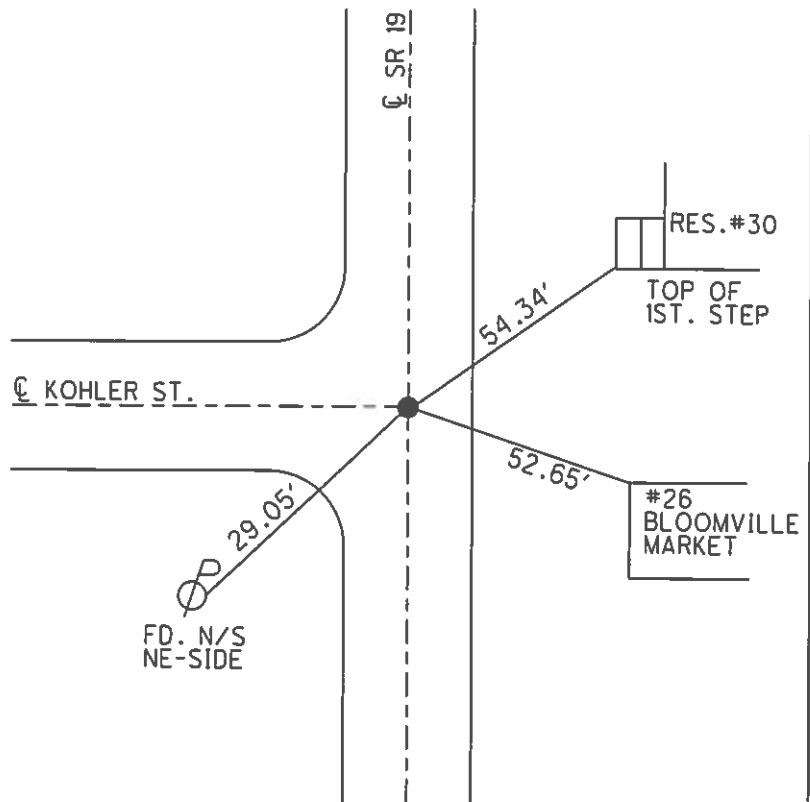
SET PK/WASHER
 09-28-92, JLR

FD. PK/SHANK
 12-5-13, JMR

FD. MINE SPK
 0.25' BELOW
 GPS, REFB33
 01-14-13, EBW

GPS, REFB33
 08-20-15

SET MAG/WASHER
 GPS, NEWREFB33
 7-21-16, JFO



O.D.O.T. DISTRICT 2 SURVEY OFFICE (USE ONLY)

PERSONNEL _____

REFERENCE NO. 33B

SHEET 47 OF 62

NOTES CANTERBURY

DATE 04-20-06

ROUTE SR 19

H.C. MICKLOVICK

WEATHER FAIR

COUNTY SENECA

R.C. HANKE

TEMP. +70°

TOWNSHIP BLOOM

SECTION 16

T 1 N R 16 E

TYPE MONUMENT FD. PK/WASHER

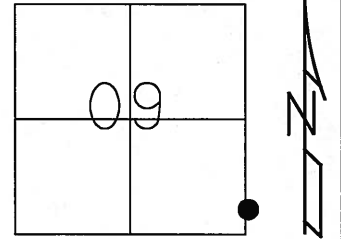
ON SURFACE - ~~BELOW~~ ON SURFACE

LEFT - ~~C PAV'T~~ - RIGHT 0.5' LT.

9.5' TO LT. EDGE OF CURB

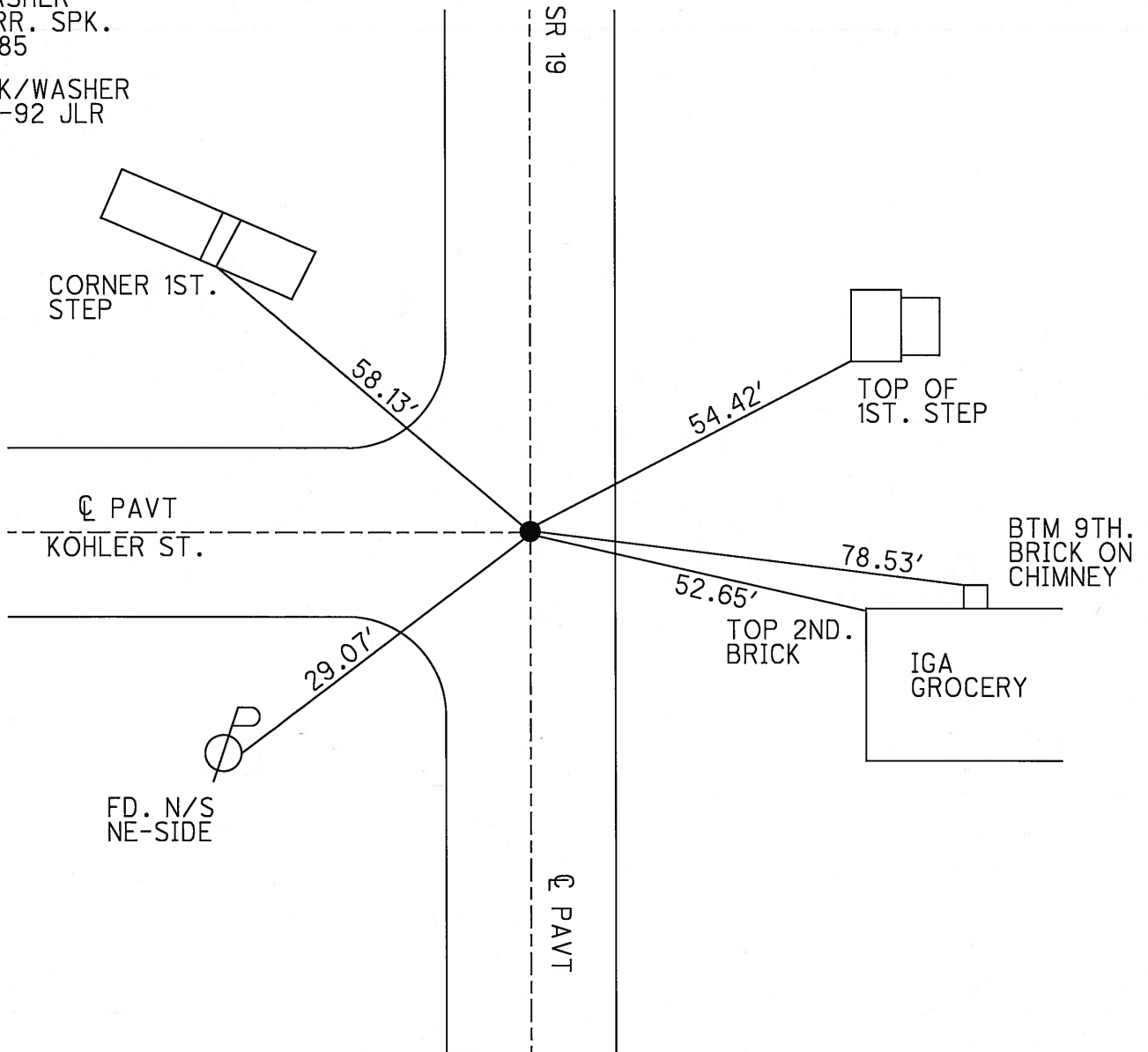
S.L.M. 220+17 (SV47)

Grid: Northing: _____ Easting: _____



RECORD STA. 220+31.55
PK./WASHER
ATOP RR. SPK.
10-08-85

SET PK./WASHER
09-28-92 JLR



O.D.O.T. DISTRICT 2 SURVEY OFFICE

PERSONNEL

REFERENCE NO. 33-B

SHEET 41 OF 53

NOTES Cheney

H.C. RIPPLE

R.C. BARBOUR

Geyman

DATE 6-23-1992

WEATHER CLOUDY

TEMP. 53°

ROUTE #19

COUNTY Seneca

TOWNSHIP Bloom

SECTION 9

T1 N R 16 E

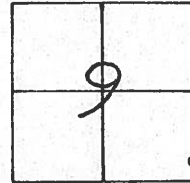
TYPE MONUMENT PK/WASHER

ON SURFACE - ~~BELOW~~ YES

LEFT-~~C~~ PAV'T. - ~~RIGHT~~ 0.5'

9.5' TO LT. EDGE PAVEMENT

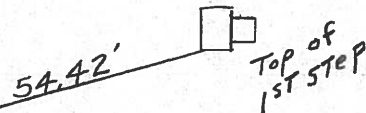
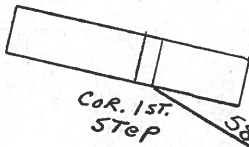
S.L.M. 220+17



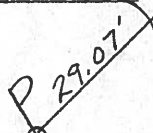
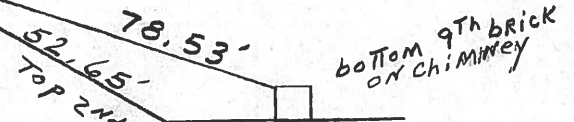
RECORD: 10/8/1985
PK/WASHER ATOP RR. SPK
STA. 220+31.55

SET PK/WASHER
9-28-1992
J.L.R.

SR 19



Kohler ST.



I.G.A.
GROCERY

Q PAVMT.

O.D.O.T. DISTRICT 2 SURVEY OFFICE

PERSONNEL _____

REFERENCE NO. _____

SHEET 21 OF _____

NOTES CRONIN Vac.

DRAWN 10/23/85

H.C. RIPPLE

DATE 10/8/85

ROUTE #19

R.C. BARBOUR

WEATHER SUNNY

COUNTY SENECA

GEYMAN

TEMP. 63°

TOWNSHIP Bloom

SECTION 9

T 1 N R 16 E

TYPE MONUMENT P.K. & WASHER ATOP R.R. SPIKE

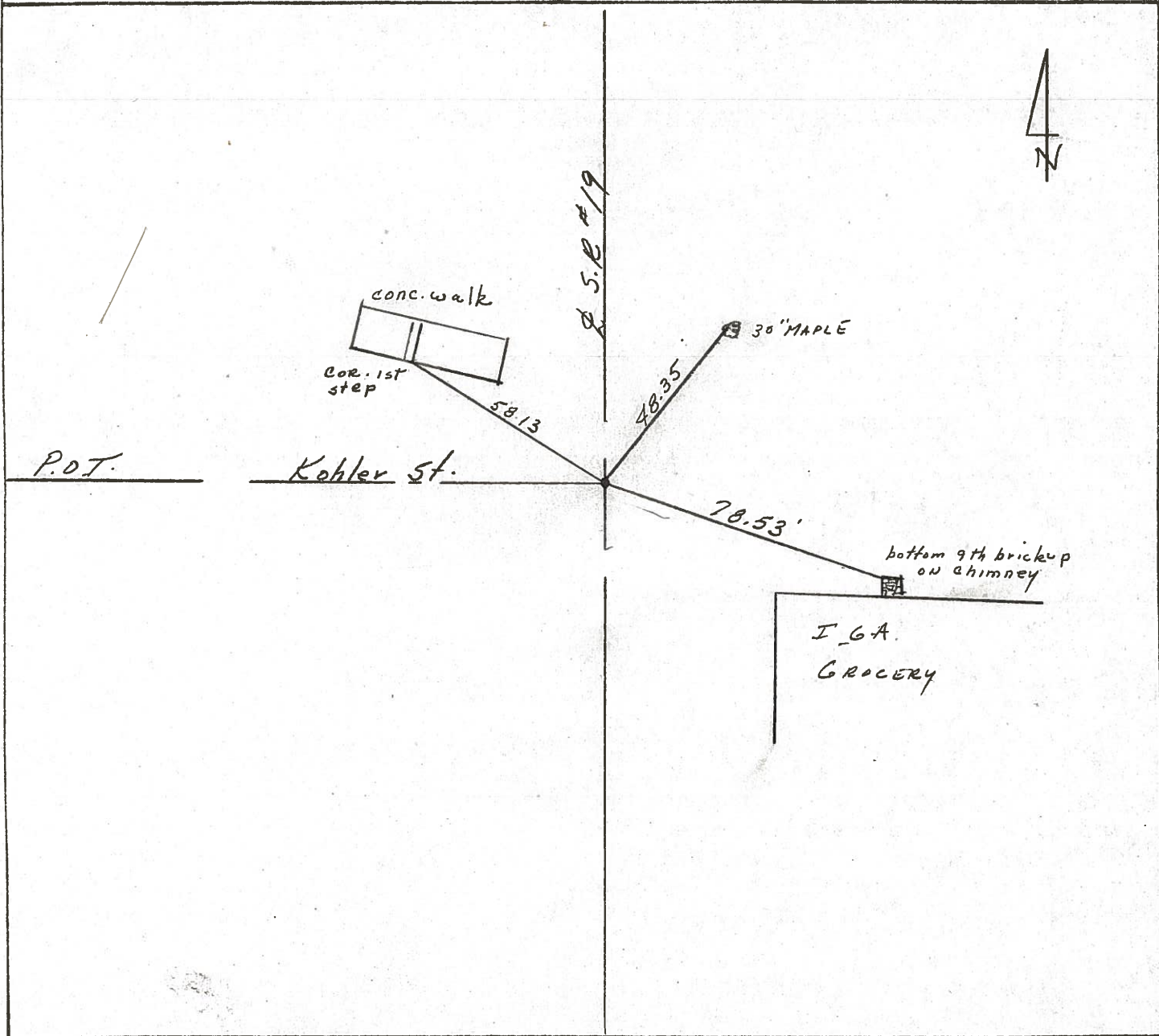
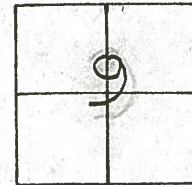
ON SURFACE - BELOW ON SURFACE

LEFT - PAV'T. - RIGHT PAV'T.

TO EDGE PAVEMENT

S.L.M. 220+31.55

33-B



PERSONNEL TITLE PERSONNEL TITLE

COUNTY Seneca

WEATHER cloudy

TEMP. 45°

Ash
Cronin
Ripple
Anderson

S. R. #19

SEC.

DESCRIPTION Ties for Control Points - Village of Bloomville

JOB NO.

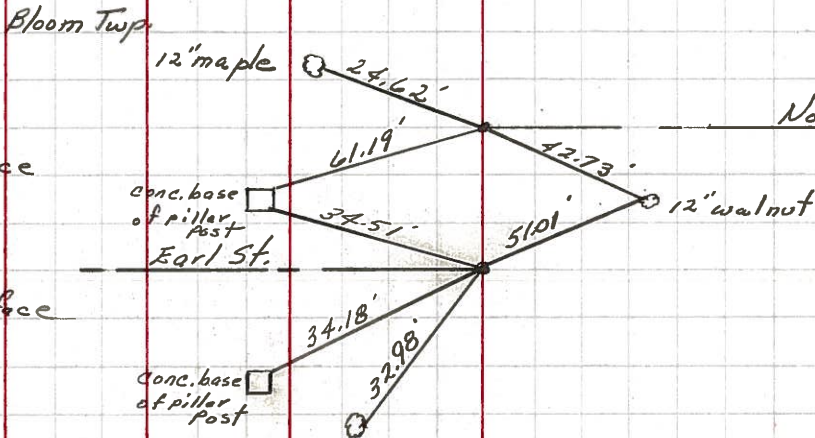
LEFT CENTER LINE RIGHT

Did not make temp corrections



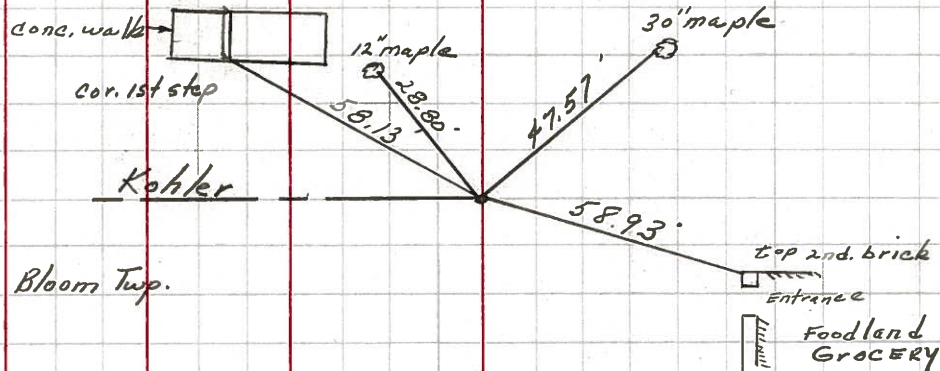
33-D

Bloom Twp
224+43.85 S.L.M.
Fd. R.R. spk. on surface
223+73.19 S.L.M.
Fd. R.R. spk. on surface



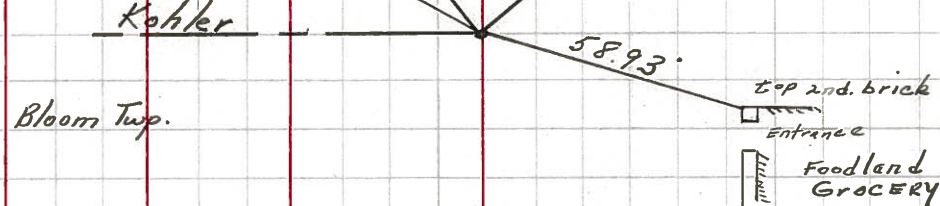
33-C

220+31.55 S.L.M.
Fd. R.R. spk. on surface



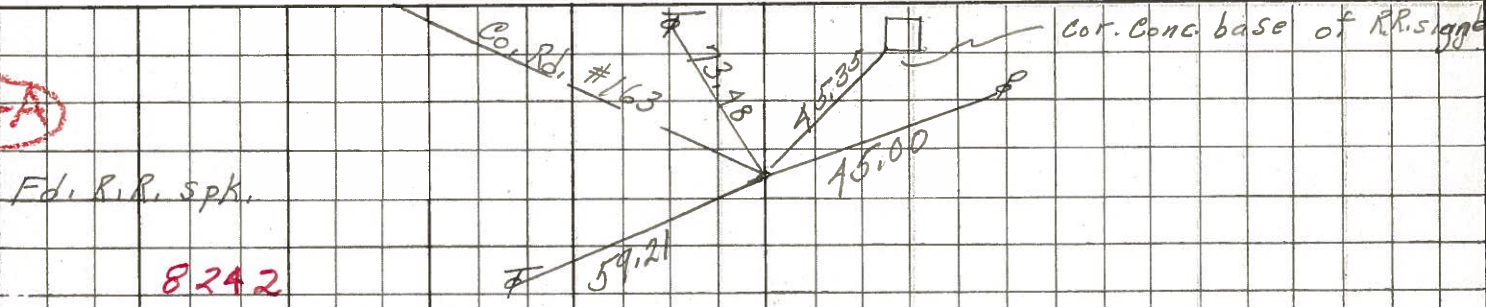
33-B

220+31.55 S.L.M.
Fd. R.R. spk. on surface

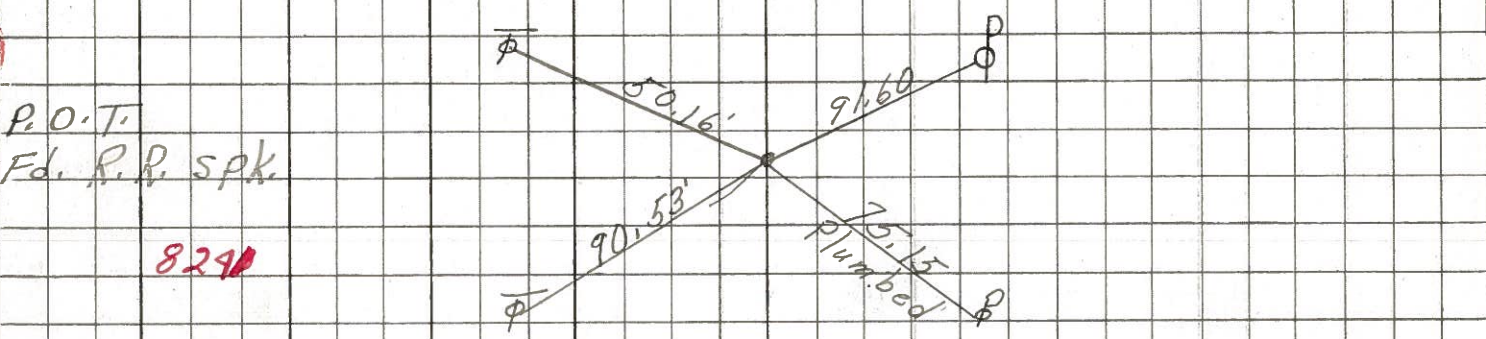


PERSONNEL TITLE PERSONNEL TITLE COUNTY Seneca DATE 7-28-69
Schneider Mosser Barbour Potts
 S. R. 19 WEATHER Fair
 SEC. Bloomville TEMP. 75°
 DESCRIPTION Ties for Control Points JOB NO.

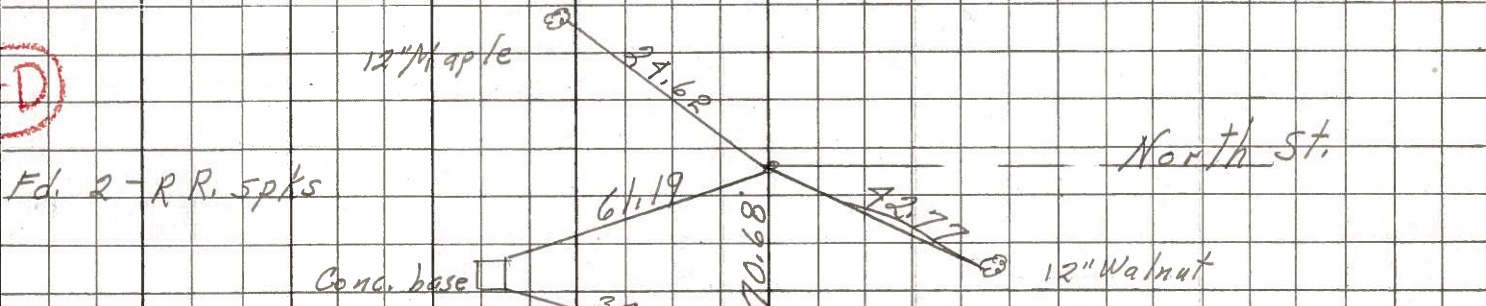
34-A



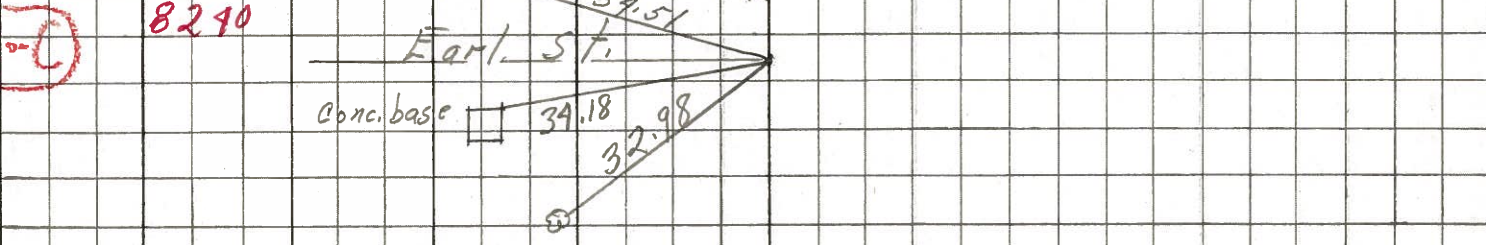
34



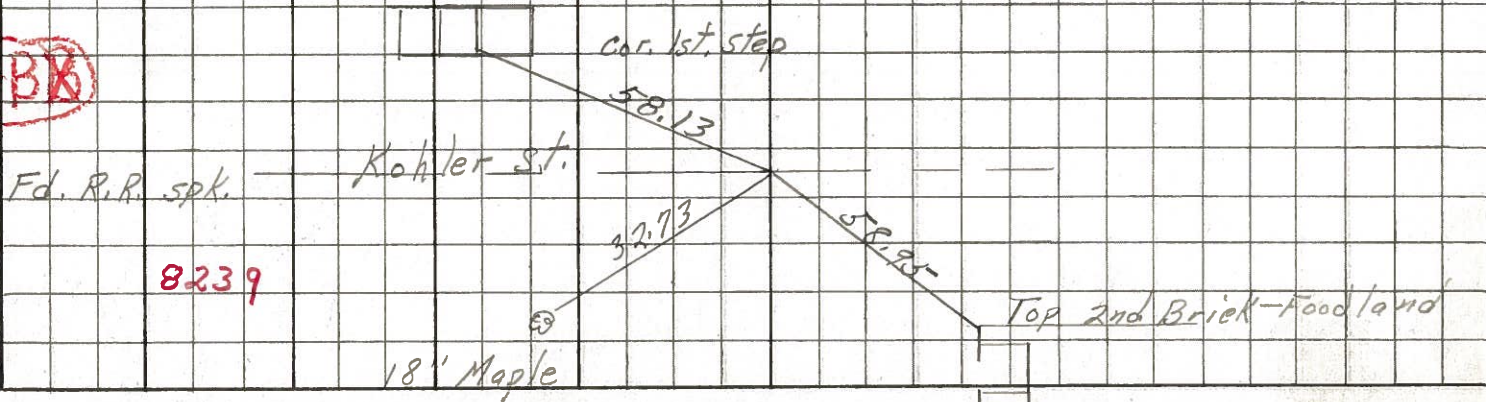
33-D



33-C



33-BK



PERSONNEL TITLE PERSONNEL TITLE

Hsh

COUNTY Seneca

DATE Apr. '62

q
Crew

S. R. #19 Bloomville

WEATHER Clear

SEC. Sen-19 (3.56-4.41)

TEMP. 60°

DESCRIPTION Control Point & Inter. Ties

JOB NO. Const.

LEFT West

CENTER LINE - Survey
S.R. #19

RIGHT East

33-D

Set R.R. Spk.
7/26/62

P.O.T. 224+43.85

P.K. Nail

Set R.R. Spk.
7/26/62

Steel Rail
Set In
Cone.

45.44'

38.92'

42.89'

North St.

P.O.T. 223+73.19

P.K. Nail

East St.

57.60'

50.71'

N. & Shi.
12" Walnut

33-C

32.99'

N. & Shi.
18" Maple

33-B

Set R.R. Spk.
7/26/62

P.O.T. 220+31.55

P.K. Nail

Kotler St.

28.80'

47.60'

N. & Shi.
24" Maple

P.O.T. 217+48.37

P.K. Nail

Set R.R. Spk.
7/26/62

32.75'

58.93'

Bot. Brick
Shrub Bed
Cor.

N. & Shi.
20" Maple

Filling station
& Recreation
Hall

33-A

49.34'

34.41'

N. & Shi.
8" Ash

P.O.T. 217+48.37

P.K. Nail

Alley

27.23'

N. & Shi.
30" Maple

N. & Shi.
15" Maple

PERSONNEL TITLE PERSONNEL TITLE

Hsh

COUNTY Seneca

DATE Apr. '62

& crew

S. R. #19 Bloomville

WEATHER Clear

SEC. Sen. 19 (3.576-4A1)

TEMP. 60°

DESCRIPTION Control Point & Inter. Ties

JOB NO. Const.

LEFT West

CENTER LINE Survey S.R. #19

RIGHT East

33-D

P.O.T. 224+43.85

P.K. Nail

Steel Rail set in Conc.

45.42'

38.97'

57.60'

42.88'

50.71'

North St.

N. Shi. 12" Walnut

33-C

P.O.T. 223+73.19

P.K. Nail

East St.

37.99'

N. Shi. 18" Maple

N. Shi. 15" Maple

28.80'

N. Shi. 24" Maple

33-B

P.O.T. 220+31.55

P.K. Nail

Kotler St.

32.75'

N. Shi. 20" Maple

47.60'

58.93'

Bot. Brick 5" Shrub Bed Cur.

Filling Station & Recreation Hall

Shrub Bed

33-A

P.O.T. 217+48.37

P.K. Nail

Alley

49.34'

N. Shi. 30" Maple

34.91'

27.73'

N. Shi. 8" Ash

N. Shi. 15" Maple