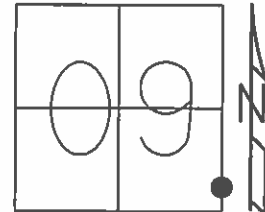


O.D.O.T. DISTRICT 2 SURVEY OFFICE (USE ONLY)

PERSONNEL _____ REFERENCE NO. 33 C SHEET 48 OF 64
 NOTES RHOADES DATE 8-20-15 ROUTE SR 19
 H.C. O'DONNELL WEATHER FAIR COUNTY SENECA
 R.C. RHOADES TEMP. 64°F TOWNSHIP BLOOM
 SECTION 9
 T 1 N R 16 E

TYPE MONUMENT PK/WASHER
 ON SURFACE - ~~BELOW~~ ON _____
 LEFT - ☉ PAV'T - RIGHT ON, ON CL. WEST
10' TO LT. EDGE PAVEMENT
 S.L.M. 223+89.39



Grid: Northing: 506093.4841 Easting: 1826382.3120

RECORD STA. 223+73.19
 PK/WASHER
 10-08-85

NOTE: 33C TO 33D = 70.70

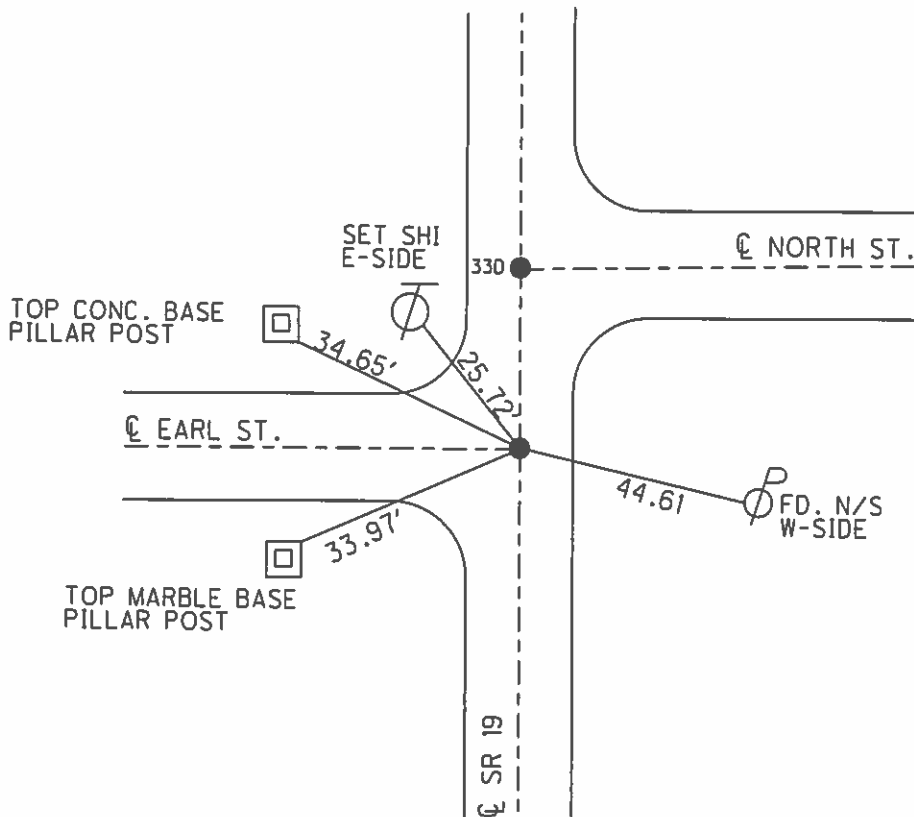
SET PK/WASHER
 09-28-92, JMR

FD. PK/WASHER
 12-5-13, JMR

GPS, REFC33
 1-10-14, EBW

GPS, REFC33
 8-20-15

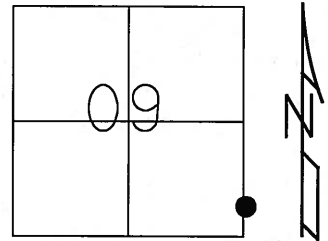
SET MAG/WASHER
 GPS, NEWREFC33
 7-21-16, JFO



O.D.O.T. DISTRICT 2 SURVEY OFFICE (USE ONLY)

PERSONNEL _____ REFERENCE NO. 33C SHEET 48 OF 62
 NOTES CANTERBURY DATE 04-20-06 ROUTE SR 19
 H.C. MICKLOVICK WEATHER FAIR COUNTY SENECA
 R.C. HANKE TEMP. +70° TOWNSHIP BLOOM
 _____ SECTION 16
 _____ T 1 N R 16 E

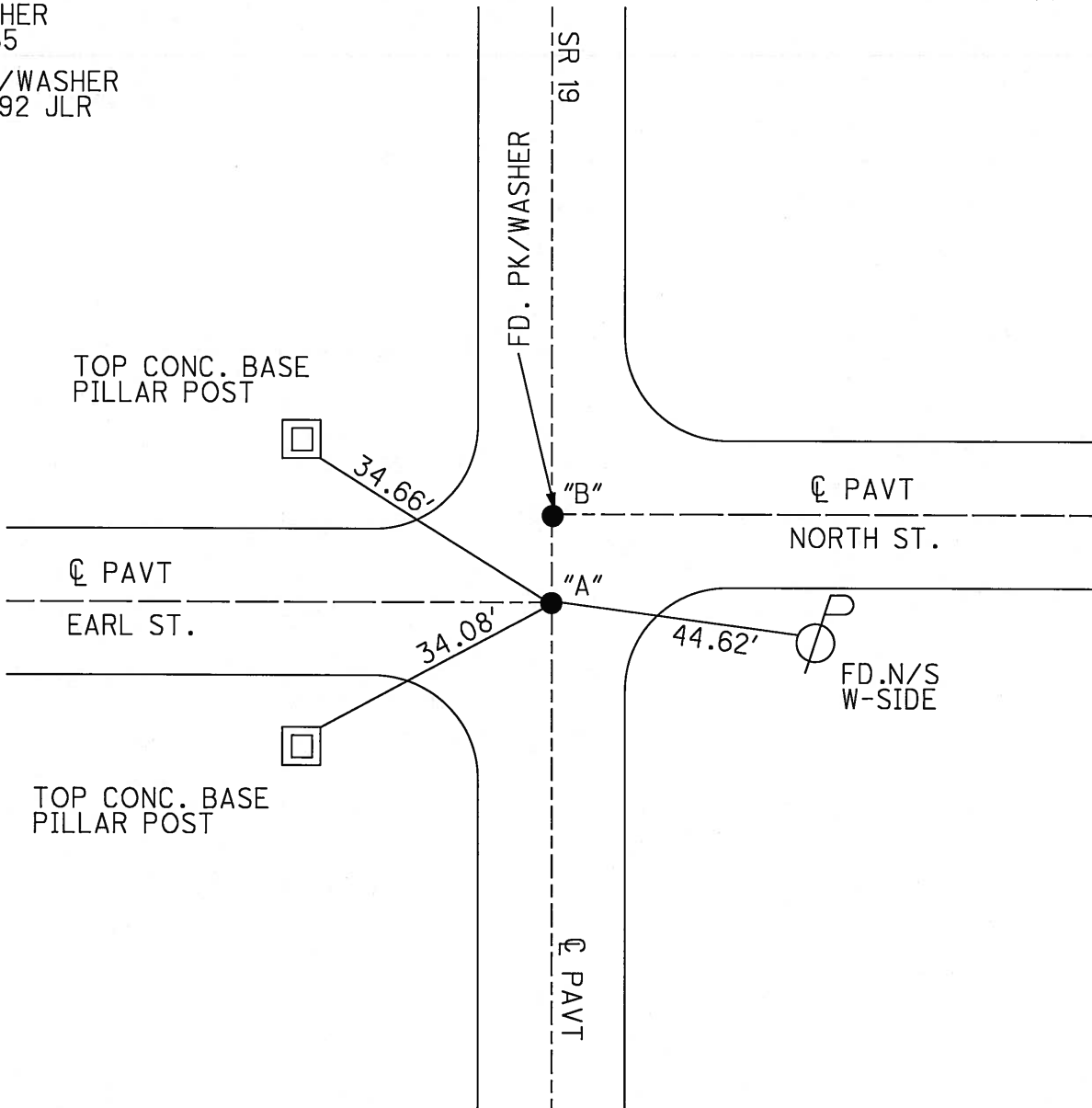
TYPE MONUMENT FD. PK/WASHER
 ON SURFACE = ~~BELOW~~ ON SURFACE
~~LEFT~~ - C PAV'T - ~~RIGHT~~ ON CL. SR.#19 / ON CL. WEST
10' TO LT. EDGE OF CURB
 S.L.M. 223+58 (SV48)



Grid: Northing: _____ Easting: _____

RECORD STA. 223+73.19
 PK/WASHER
 10-08-85
 SET PK/WASHER
 09-28-92 JLR

NOTE: "A" TO "B" = 70.70'



O.D.O.T. DISTRICT 2 SURVEY OFFICE

PERSONNEL

REFERENCE NO. 33-C

SHEET 42 OF 53

NOTES Cheney

H.C. RIPPLE

R.C. BARBOUR

Geyman

DATE 6-23-1992

WEATHER CLOUDY

TEMP. 53°

ROUTE #19

COUNTY Seneca

TOWNSHIP Bloom

SECTION 9

T/L N R 16 E

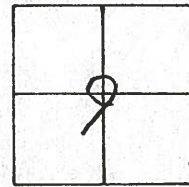
TYPE MONUMENT BOTH PK/WASHER

ON SURFACE - ~~BELOW~~ ON

~~LEFT - C PAV'T. - RIGHT~~ ON &

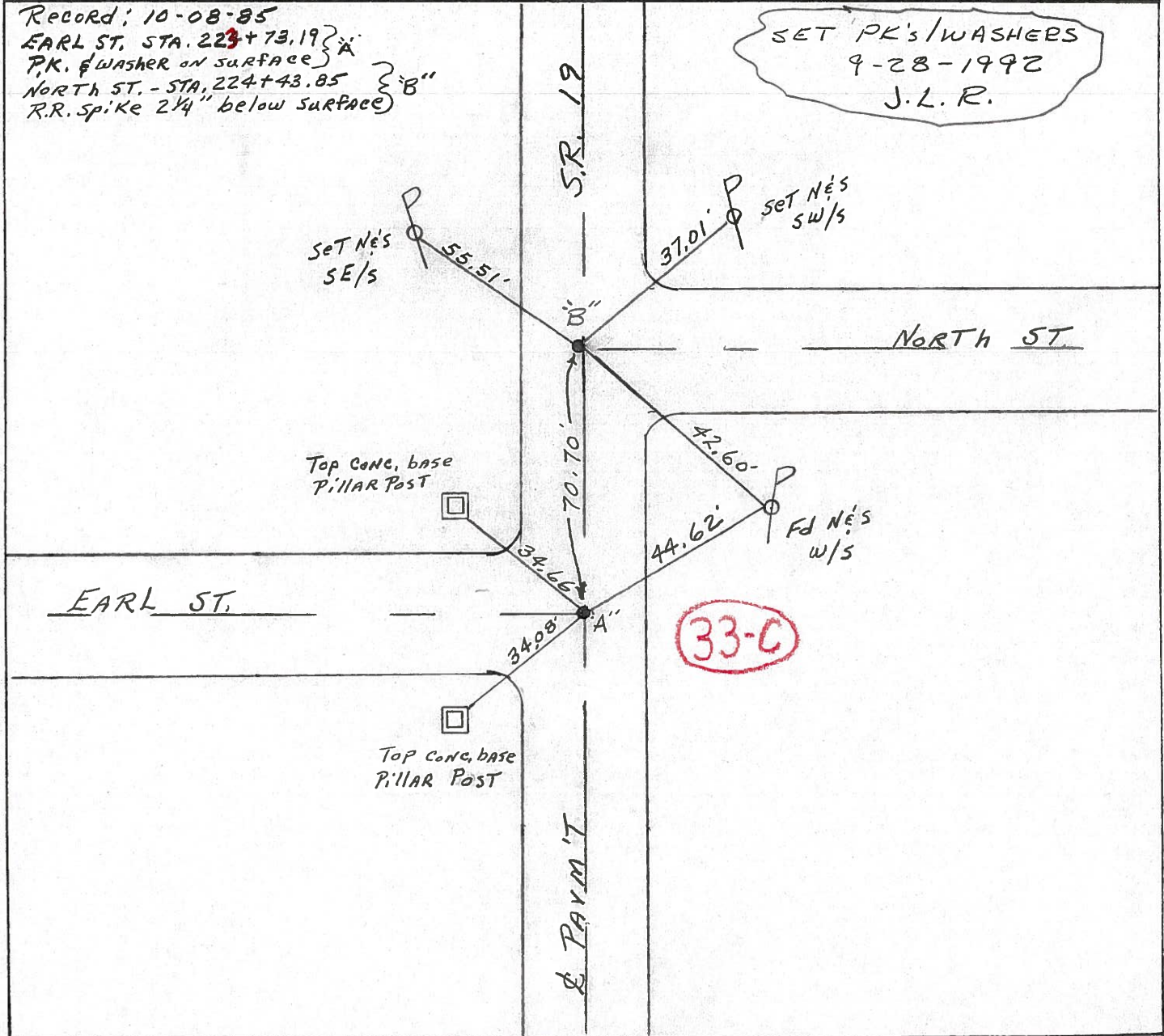
10' TO ET. EDGE PAVEMENT

S.L.M. Earl St. ON/ & North St. 0.5' LT. &



Record: 10-08-85
 EARL ST. STA. 223+73.19 } A"
 PK. & WASHER ON SURFACE }
 NORTH ST. - STA. 224+43.85 } B"
 R.R. SPIKE 2 1/4" below surface }

SET PK'S/WASHERS
 9-28-1992
 J.L.R.



O.D.O.T. DISTRICT 2 SURVEY OFFICE

PERSONNEL _____

REFERENCE NO. _____

SHEET 42 OF _____

NOTES CROWN VAC

DRAWN 10/23/85

H.C. RIPPLE

DATE 10/8/85

R.C. BARBOUR

WEATHER SUNNY

GEYMAN

TEMP. 63°

ROUTE #19

COUNTY SENECA

TOWNSHIP BLOOM

SECTION 9

T1 N R 16 E

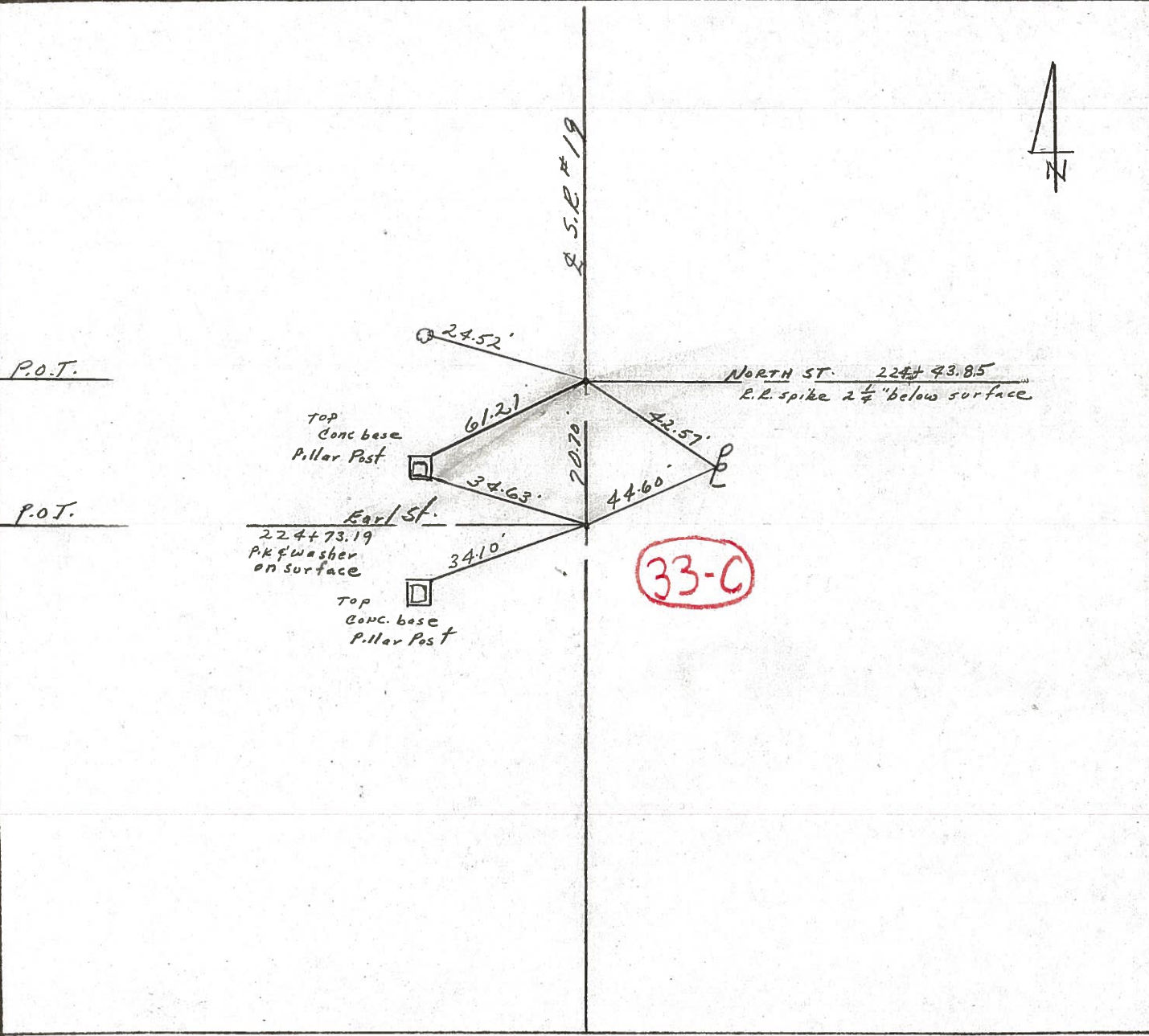
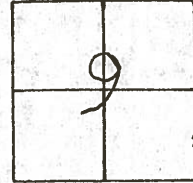
TYPE MONUMENT _____

ON SURFACE - BELOW _____

LEFT- & PAV'T. - RIGHT _____

TO _____ EDGE PAVEMENT

S.L.M. _____

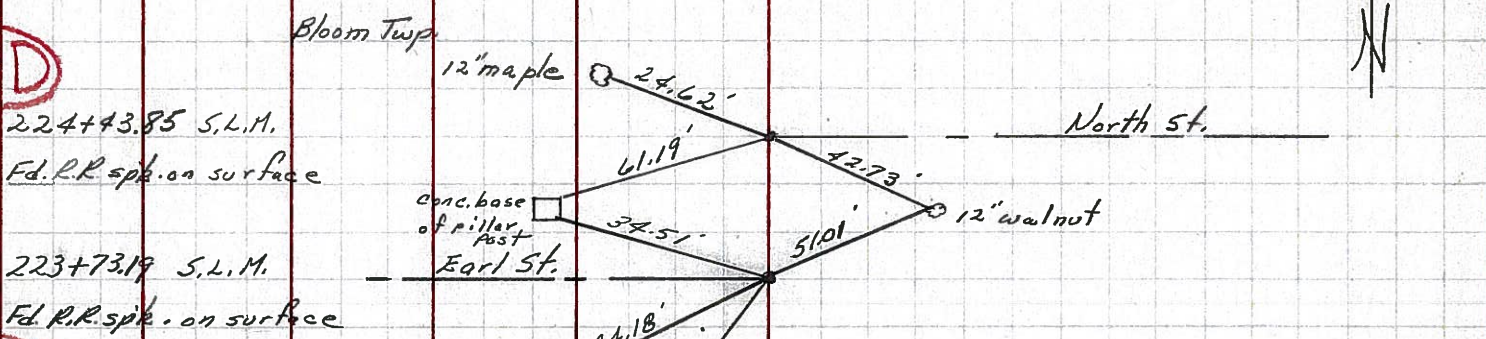


PERSONNEL	TITLE	PERSONNEL	TITLE
Ash			
Cronin			
Ripple			
Anderson			

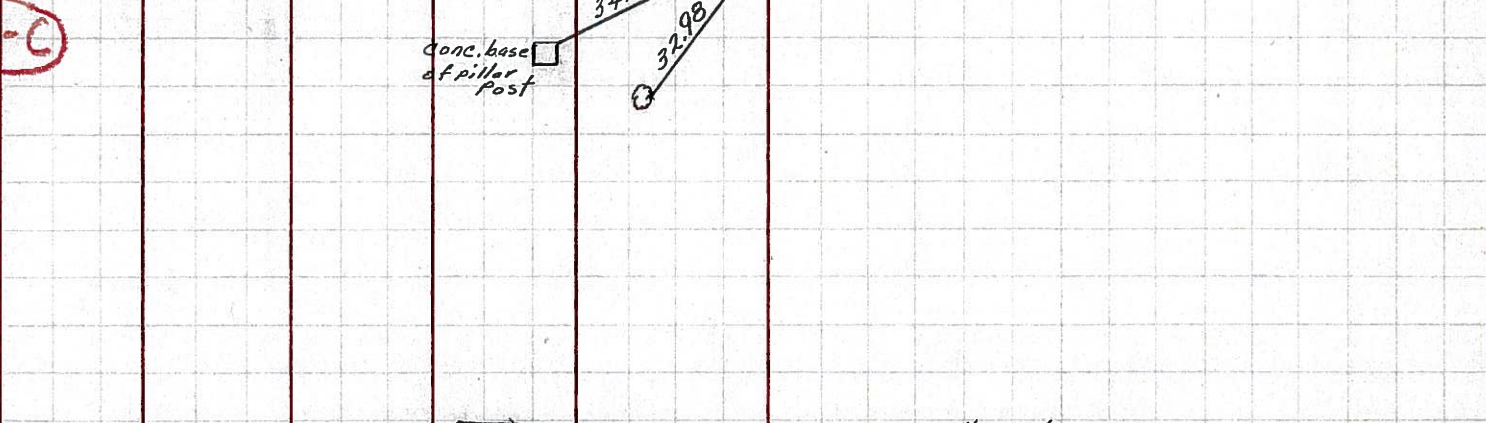
COUNTY Seneca
S. R. #19
WEATHER cloudy
TEMP. 45°

DESCRIPTION Ties for Control Points - Village of Bloomville JOB NO. _____

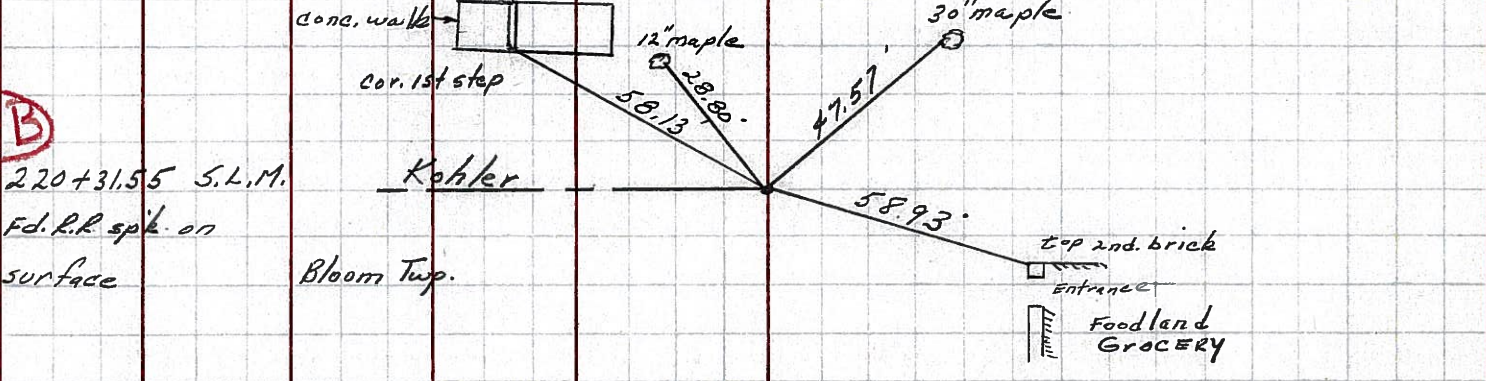
33-D



33-C



33-B



224+43.85 S.L.M.
Fd. R.R. spike on surface

223+73.19 S.L.M.
Fd. R.R. spike on surface

220+31.55 S.L.M.
Fd. R.R. spike on surface

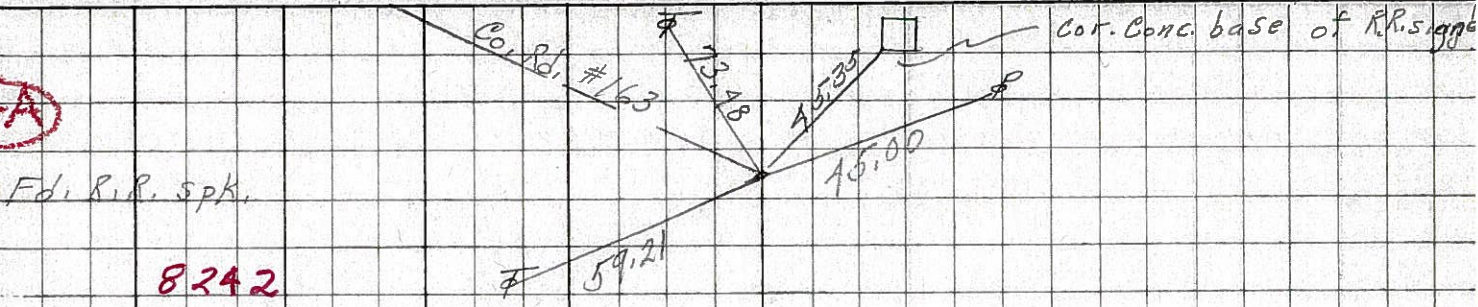
PERSONNEL TITLE PERSONNEL TITLE

Schneider _____ COUNTY Seneca DATE 7-28-69
Messer _____ S. R. 19 WEATHER Fair
Barbour _____ SEC. Bloomville TEMP. 75°
Potts _____

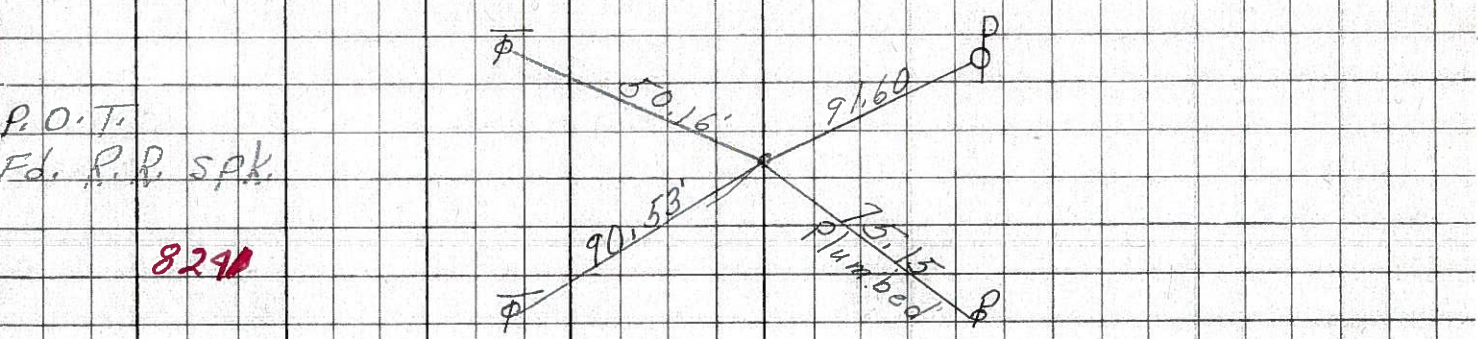
DESCRIPTION Ties for Control Points JOB NO. _____

LEFT CENTER LINE RIGHT

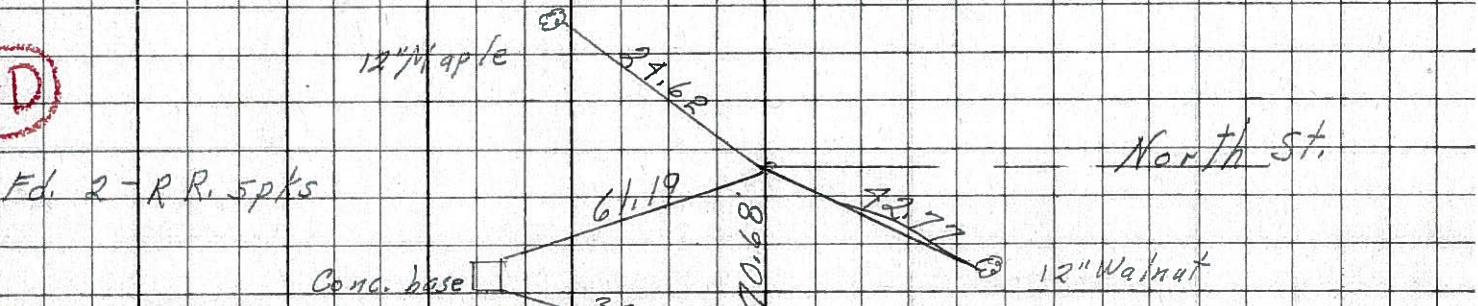
34-A



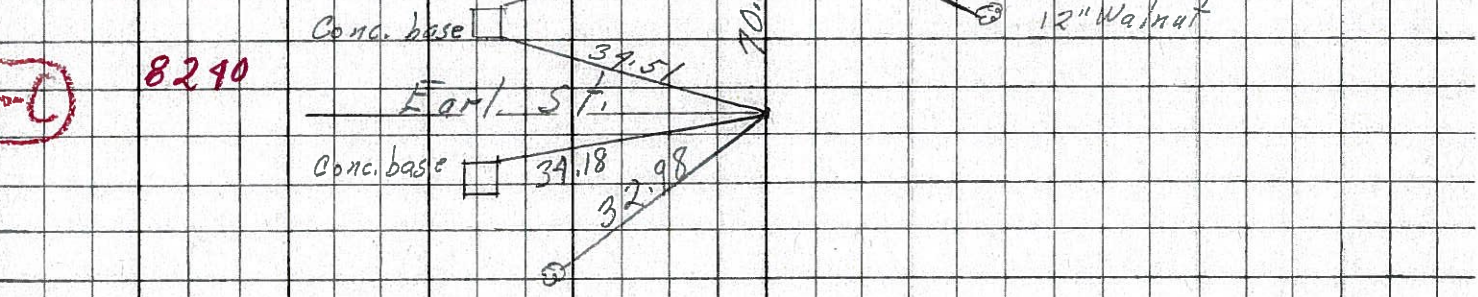
34



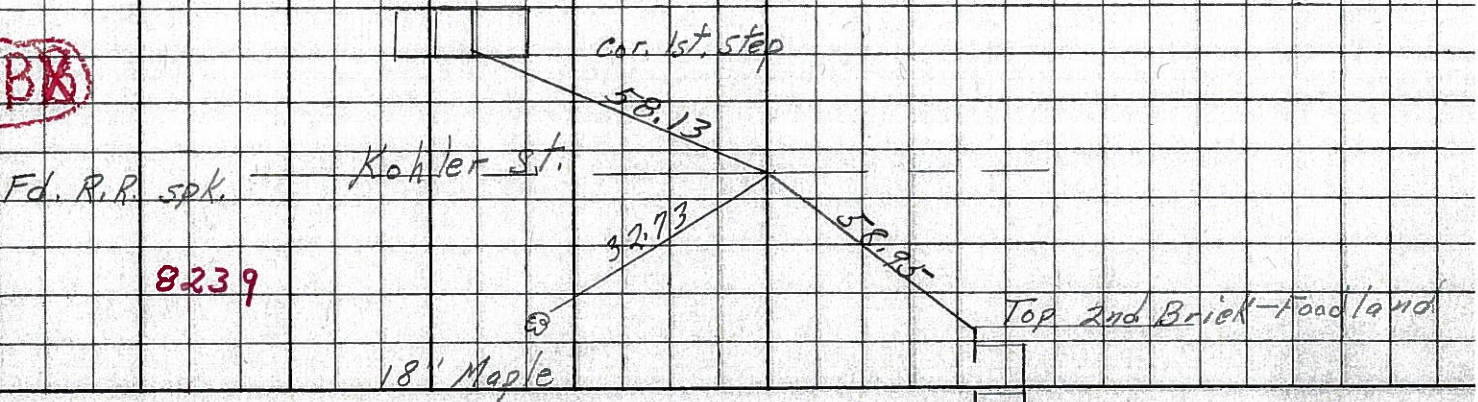
33-D



33-L



33-BK



PERSONNEL TITLE PERSONNEL TITLE

Hsh

COUNTY Seneca

DATE Apr. '62

& Crew

S. R. #19 Bloomville

WEATHER Clear

SEC. Sen.-19 (3.56-4.41)

TEMP. 60°

DESCRIPTION Control Point & Inter. Ties

JOB NO. Const.

LEFT West

CENTER LINE - Survey S.R. #19

RIGHT East

33-D

Set R.R. Spk. 7/26/62

P.O.T. 224+43.85

P.K. Nail

Set R.R. Spk. 7/26/62

Steel Rail Set In Conc.

N. & Shi. 18" Maple

45.44'

38.92'

57.60'

42.89'

50.71'

North St.

N. & Shi. 12" Walnut

P.O.T. 223+73.19

P.K. Nail

East St.

N. & Shi. 18" Maple

32.99'

33-C

Set R.R. Spk. 7/26/62

P.O.T. 220+31.55

P.K. Nail

Kotler St.

N. & Shi. 15" Maple

28.80'

32.75'

47.60'

58.93'

N. & Shi. 24" Maple

Bot. Brick Shrub Bed Cor.

33-B

Set R.R. Spk. 7/26/62

P.O.T. 217+48.37

P.K. Nail

Filling station & Recreation Hall

Shrub Bed

N. & Shi. 20" Maple

34.41'

N. & Shi. 8" Ash

33-A

49.34'

27.78'

Alley

N. & Shi. 30" Maple

N. & Shi. 15" Maple

PERSONNEL TITLE PERSONNEL TITLE

H&H
&
Crew

COUNTY Semeca

DATE Apr. '62

S. R. 19 Bloomville

WEATHER Clear

SEC. Sen. 19 (356-4A1)

TEMP. 60°

DESCRIPTION Control Point & Inter. Ties

JOB NO. Const.

LEFT West

CENTER LINE Survey

RIGHT East

33-D

P.O.T. 224+43.85

P.K. Nail

Steel Rail
Set in
Cemc.

45.72'

38.92'

57.60'

42.82'

50.71'

North St.

N.H. Shi.
12" Walnut

33-C

P.O.T. 223+73.19

P.K. Nail

East St.

32.99'

N.H. Shi.
18" Maple

N.H. Shi.
15" Maple

28.80'

47.60'

N.H. Shi.
24" Maple

33-B

P.O.T. 220+31.55

P.K. Nail

Kotler St.

32.75'

N.H. Shi.
10" Maple

58.93'

Bot. Brick
5' x 8' x 13'
Cur.

Filling station
& Recreation
Hall

Red
grub
5'

33-A

P.O.T. 217+48.37

P.K. Nail

Alley

49.34'

N.H. Shi.
30" Maple

34.41'

N.H. Shi.
8" Ash

27.73'

N.H. Shi.
15" Maple