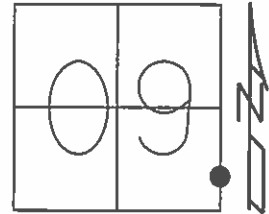


O.D.O.T. DISTRICT 2 SURVEY OFFICE (USE ONLY)

PERSONNEL _____ REFERENCE NO. 33D SHEET 49 OF 64
 NOTES RHOADES DATE 8-20-15 ROUTE SR 19
 H.C. O'DONNELL WEATHER FAIR COUNTY SENECA
 R.C. RHOADES TEMP. 64°F TOWNSHIP BLOOM
 SECTION 9
 T 1 N R 16 E

TYPE MONUMENT FD. PK/WASHER
 ON SURFACE - ~~BELOW~~ ON SURFACE
 LEFT - ☉ PAV'T - ~~RIGHT~~ 0.5' LT. /ON CL. EAST
9.5' TO LT EDGE PAVEMENT
 S.L.M. 224+60.05
 Grid: Northing: 506164.1704 Easting: 1826383.2422



RECORD STA. 224+43.85
 PK/WASHER
 10-08-85

NOTE: 33C TO 33D = 70.70

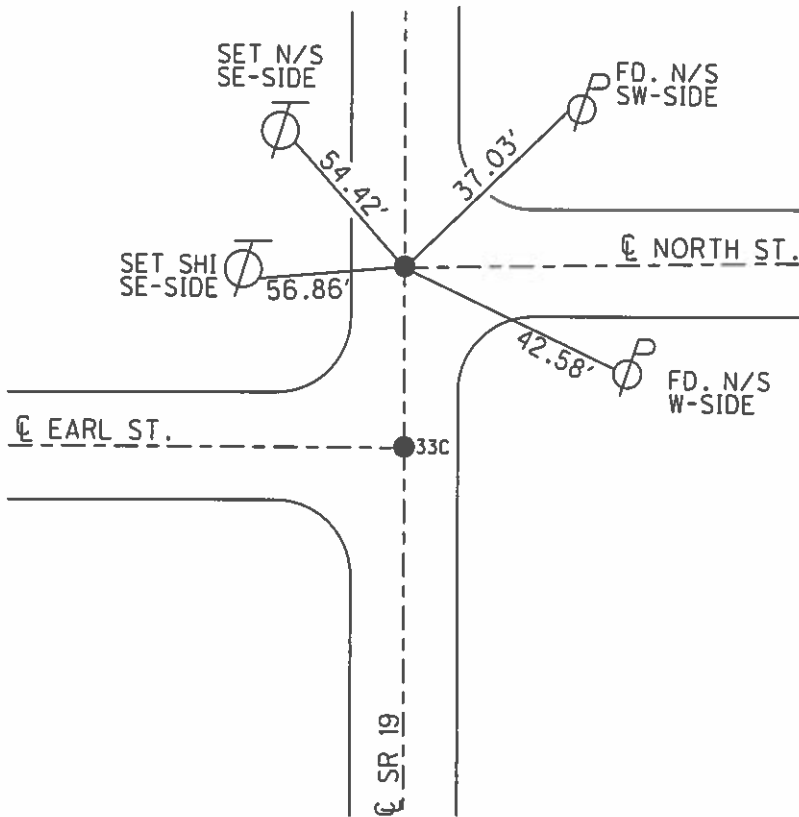
SET PK/WASHER
 09-28-92, JMR

FD. PK/WASHER
 12-5-13, JMR

GPS, REFD33
 1-10-14, EBW

GPS, REFD33
 8-20-15

SET MAG/WASHER
 GPS, NEWREFD33
 7-21-16, JFO



O.D.O.T. DISTRICT 2 SURVEY OFFICE (USE ONLY)

PERSONNEL _____

REFERENCE NO. 33D

SHEET 49 OF 62

NOTES CANTERBURY

DATE 04-20-06

ROUTE SR 19

H.C. MICKLOVICK

WEATHER FAIR

COUNTY SENECA

R.C. HANKE

TEMP. +70°

TOWNSHIP BLOOM

SECTION 16

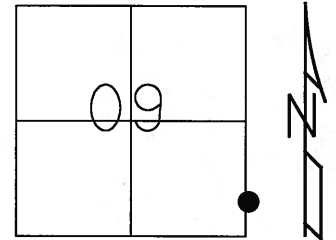
T 1 N R 16 E

TYPE MONUMENT FD. PK/WASHER

ON SURFACE BELOW ON SURFACE

LEFT - ~~C PAVT~~ - RIGHT 0.5' LT. / ON CL. EAST
9.5' TO LT. EDGE OF CURB

S.L.M. 224+30 (SV49)

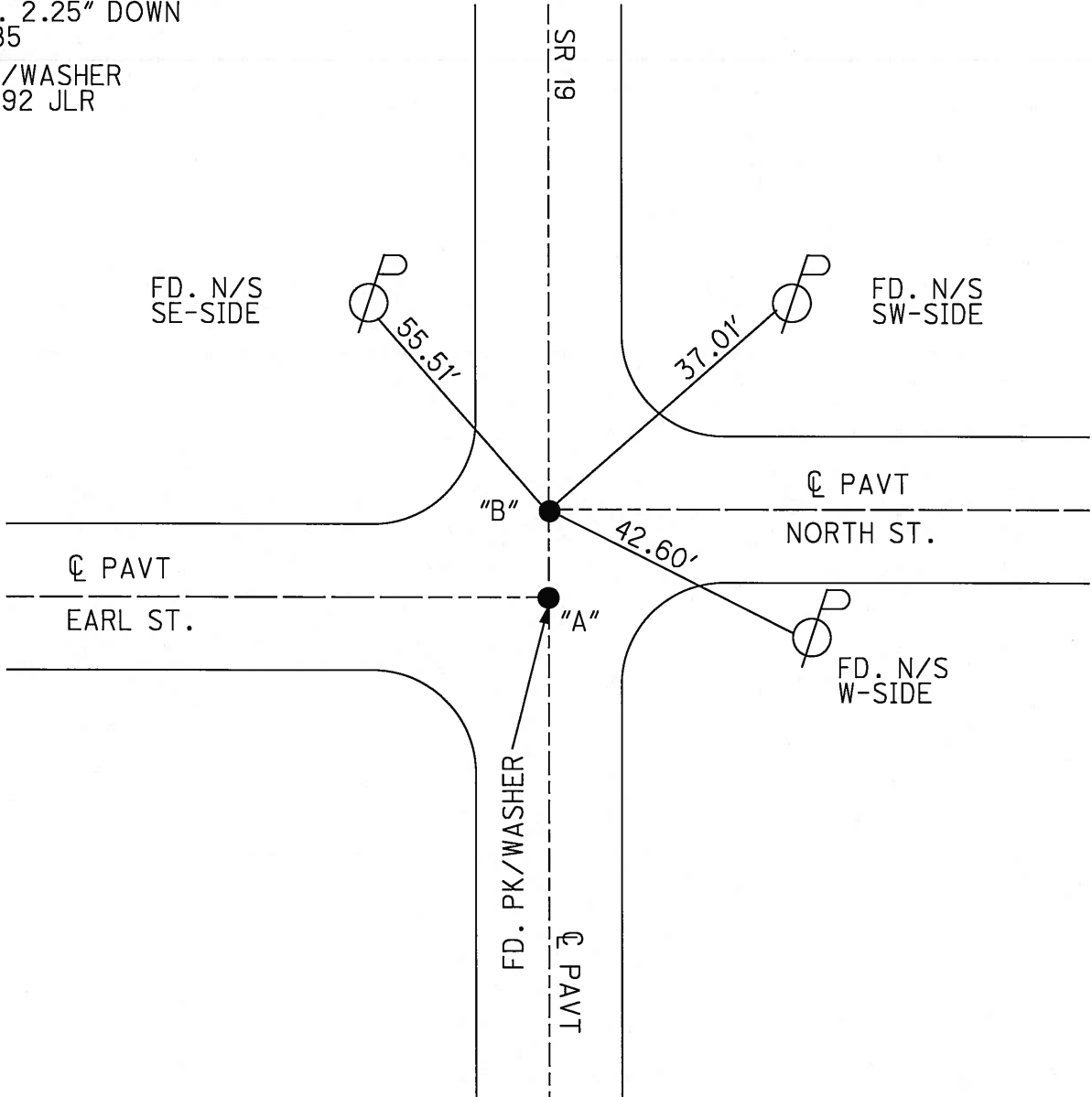


Grid: Northing: _____ Easting: _____

RECORD STA. 224+43.85
 RR.SPK. 2.25" DOWN
10-08-85

SET PK/WASHER
09-28-92 JLR

NOTE: "A" TO "B" = 70.70'



O.D.O.T. DISTRICT 2 SURVEY OFFICE

PERSONNEL

REFERENCE NO. 33-C

SHEET 42 OF 53

NOTES Cheney

H.C. RIPPLE

R.C. BARBOUR

Geyman

DATE 6-23-1992

WEATHER CLOUDY

TEMP. 53°

ROUTE #19

COUNTY Seneca

TOWNSHIP Bloom

SECTION 9

T.1 N. R.16 E

TYPE MONUMENT BOTH PK/WASHER

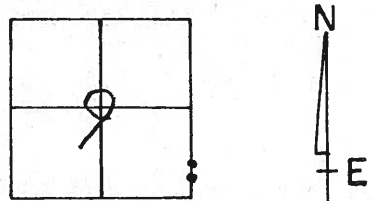
ON SURFACE - ~~BELOW~~ ON

~~LEFT - & PAV'T. - RIGHT~~ 1" ON E

3" TO LT. EDGE PAVEMENT

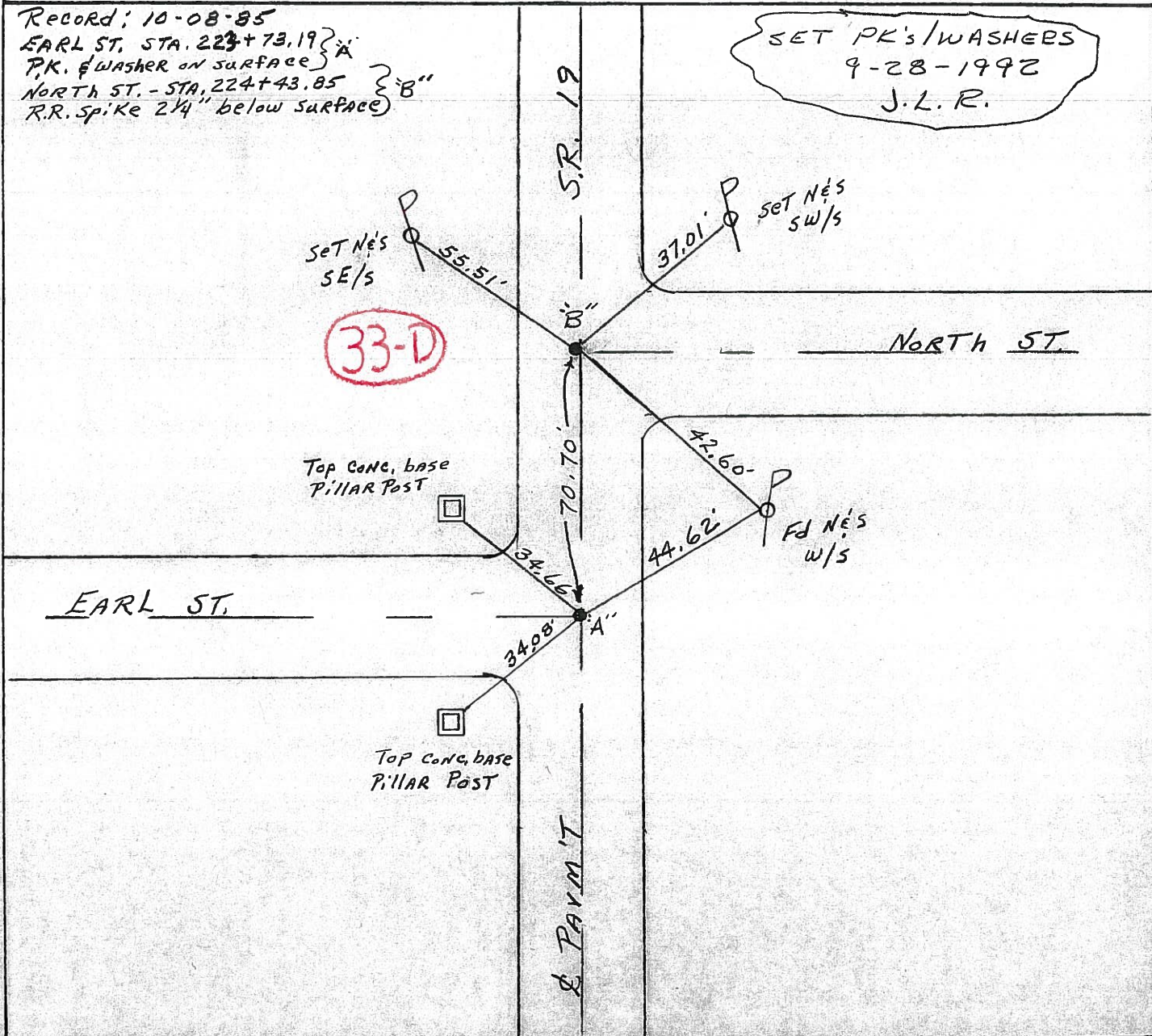
S.L.M. Earl St. ON/ North St.

70.70' & 70.70' 0.5' LT. &



Record; 10-08-85
 EARL ST. STA. 223+73.19 } A'
 PK. & WASHER ON SURFACE }
 NORTH ST. - STA. 224+43.85 } B''
 R.R. Spike 2 1/4" below surface }

SET PK'S/WASHERS
 9-28-1992
 J.L.R.



O.D.O.T. DISTRICT 2 SURVEY OFFICE

PERSONNEL _____

REFERENCE NO. _____

SHEET 42 OF _____

NOTES CROWN Vac

DRAWN 10/23/85

H.C. RIPPLE

DATE 10/8/85

R.C. BARBOUR

WEATHER SUNNY

GEYMAN

TEMP. 63°

ROUTE #19

COUNTY SENECA

TOWNSHIP BLOOM

SECTION 9

T. 1 N. R 16 E

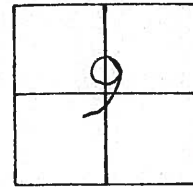
TYPE MONUMENT _____

ON SURFACE - BELOW _____

LEFT- & PAV'T. - RIGHT _____

TO _____ EDGE PAVEMENT

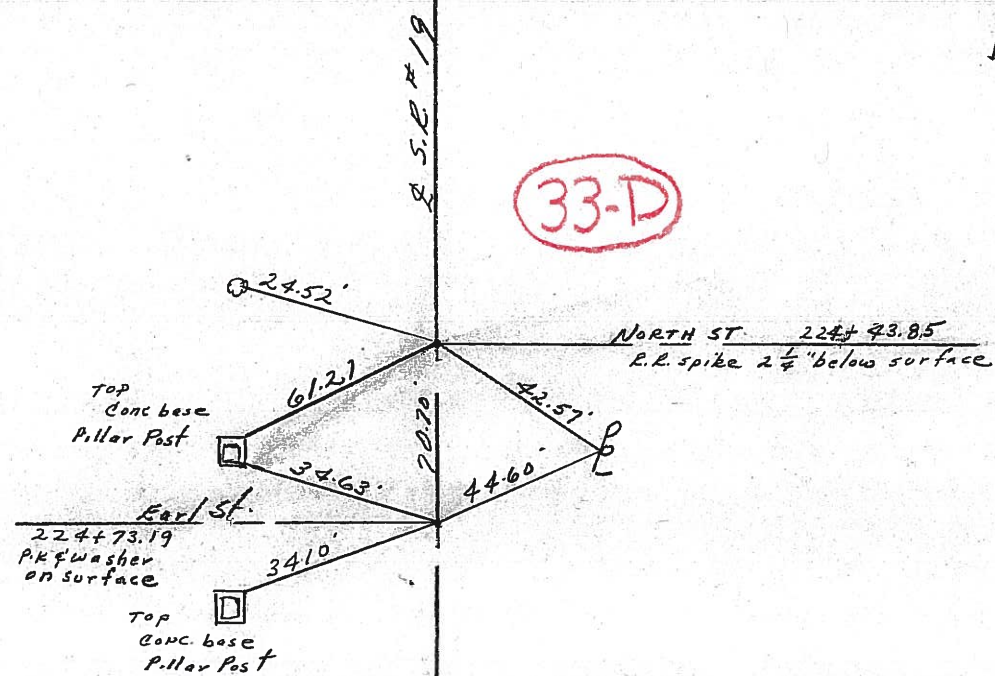
S.L.M. _____



33-D

P.O.T.

P.O.T.



PERSONNEL TITLE PERSONNEL TITLE

Ash
Cranin
Ripple
Anderson

COUNTY Seneca

S. R. #19

WEATHER cloudy

SEC.

TEMP. 45°

DESCRIPTION Ties for Control Points - Village of Bloomville

JOB NO.

LEFT

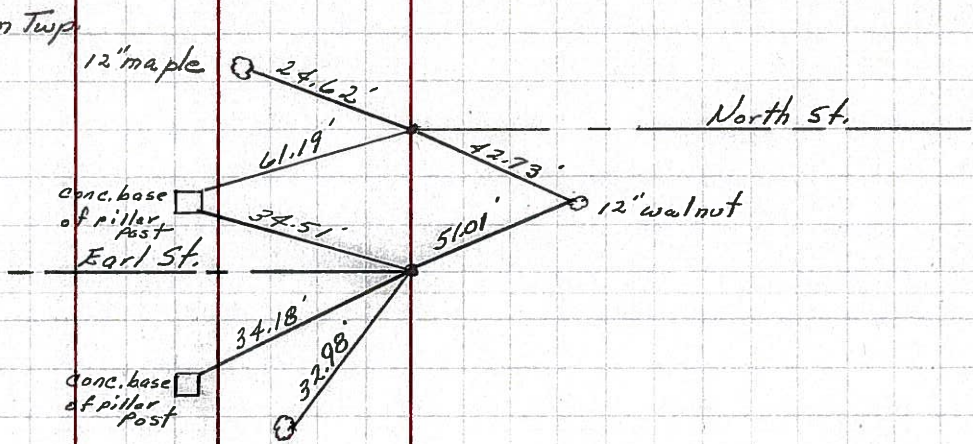
CENTER LINE

RIGHT

Did not make temp corrections

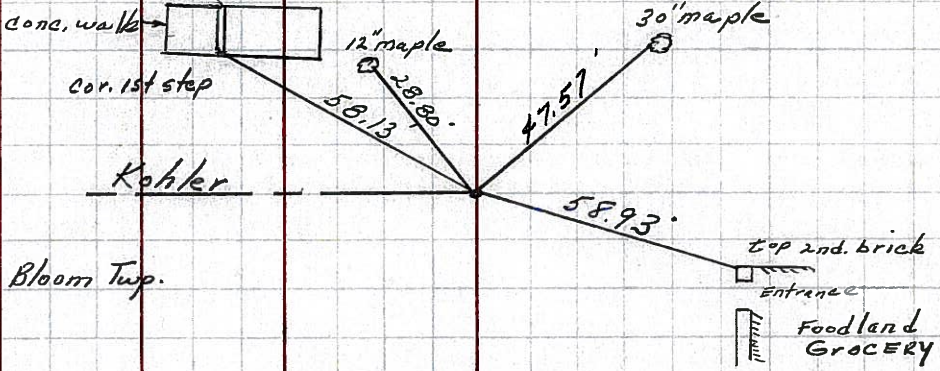
33-D

Bloom Twp
224+43.85 S.L.M.
Fd. R.R. spike on surface
223+73.19 S.L.M.
Fd. R.R. spike on surface



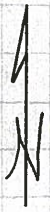
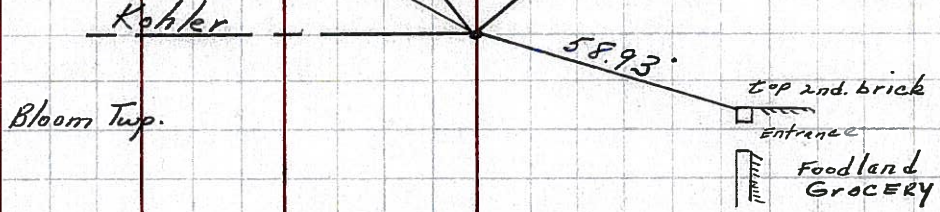
33-C

220+31.55 S.L.M.
Fd. R.R. spike on surface



33-B

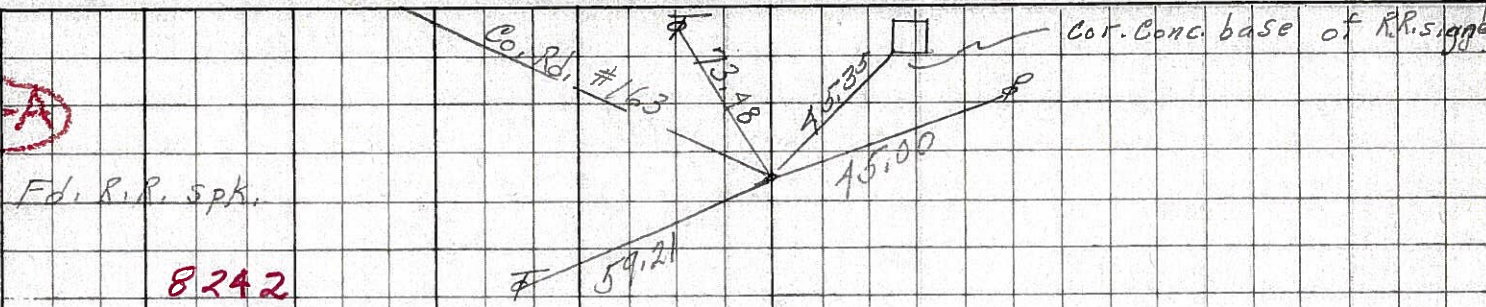
220+31.55 S.L.M.
Fd. R.R. spike on surface



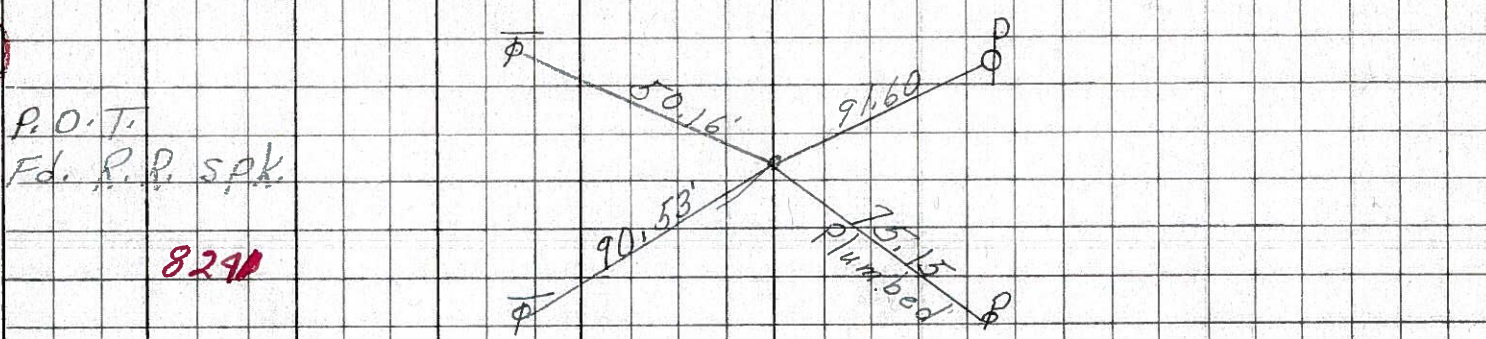
PERSONNEL	TITLE	PERSONNEL	TITLE	COUNTY	DATE	WEATHER	TEMP.
Schneider				Seneca	7-28-69	Fair	75°
Mosser				S. R. 19			
Barbour				SEC. Bloomville			
Potts							

DESCRIPTION Ties for Control Points JOB NO. _____

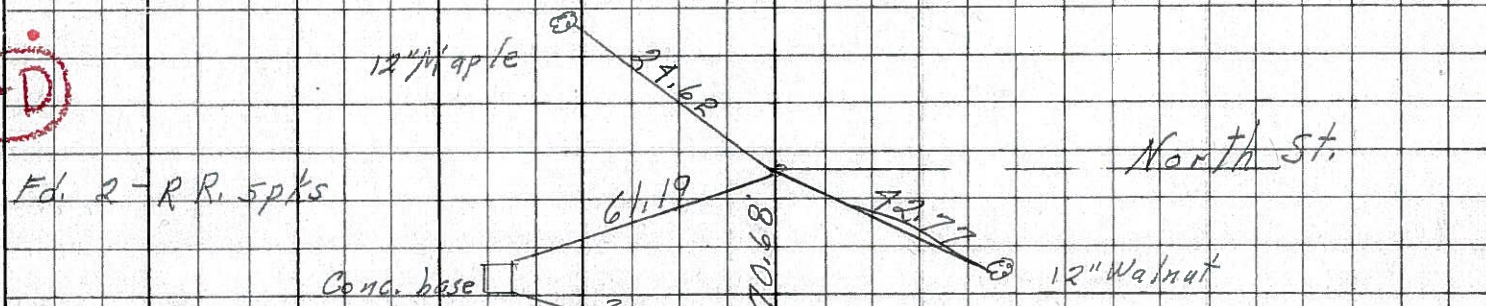
34-A



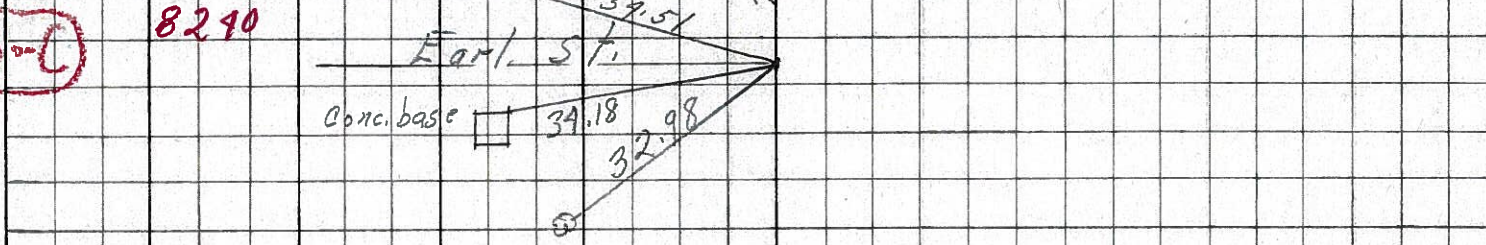
34



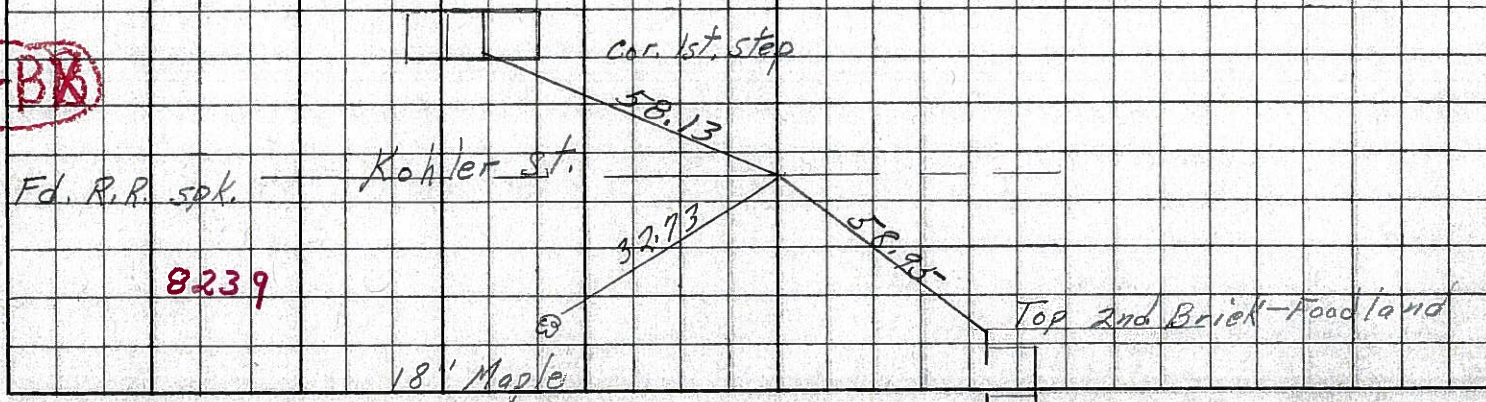
33-D



33-C



33-BK



PERSONNEL TITLE PERSONNEL TITLE

Hsh

COUNTY Seneca

DATE Apr. '62

& crew

S. R. #19 Bloomville

WEATHER Clear

SEC. Sen.-19 (3.56-4.41) TEMP. 60°

DESCRIPTION Control Point & Inter. Ties

JOB NO. Const.

LEFT West

CENTER LINE - Survey S.R. #19

RIGHT East

33-D

Set R.R. Spk. 7/26/62

P.O.T. 224+43.85

P.K. Nail

Set R.R. Spk. 7/26/62

Steel Rail Set In Conc.

P.O.T. 223+73.19

P.K. Nail

East St.

33-C

Set R.R. Spk. 7/26/62

P.O.T. 220+31.55

P.K. Nail

Kotler St.

33-B

Set R.R. Spk. 7/26/62

P.O.T. 217+48.37

P.K. Nail

Filling Station & Recreation Hall

Shrub Bed

33-A

Alley



PERSONNEL TITLE PERSONNEL TITLE

HSA
+
Crew

COUNTY Seneca DATE Apr '62

S. R. #19 Bloomville WEATHER Clear

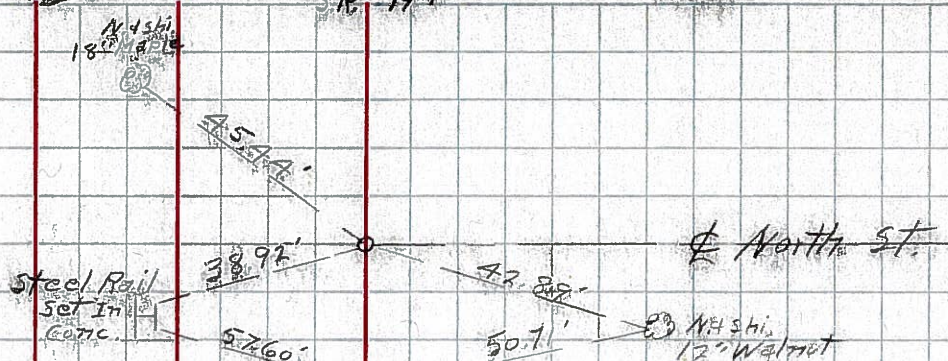
SEC. Sen-19 (5.56-4A1) TEMP 60°

DESCRIPTION Control Point & Inter. Ties JOB NO. Const.

LEFT West CENTER LINE - Survey S.R. #19 RIGHT East

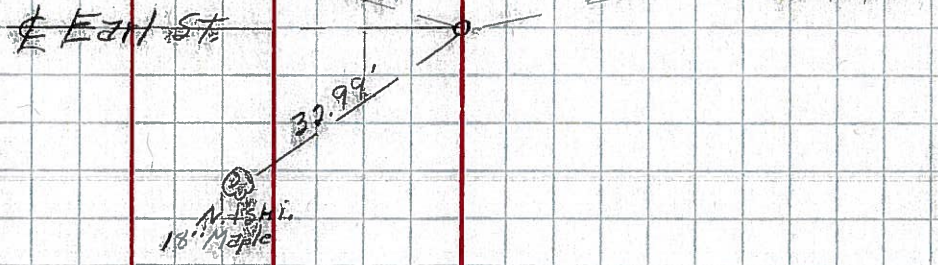
33-D

P.O.T. 224+43.85
P.K. Nail



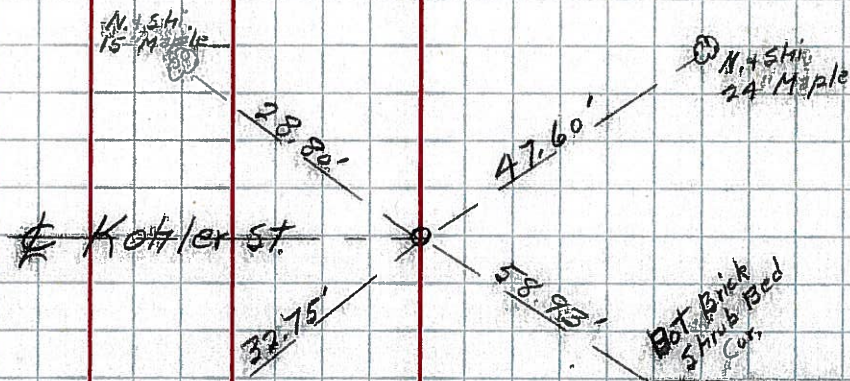
33-C

P.O.T. 223+73.19
P.K. Nail



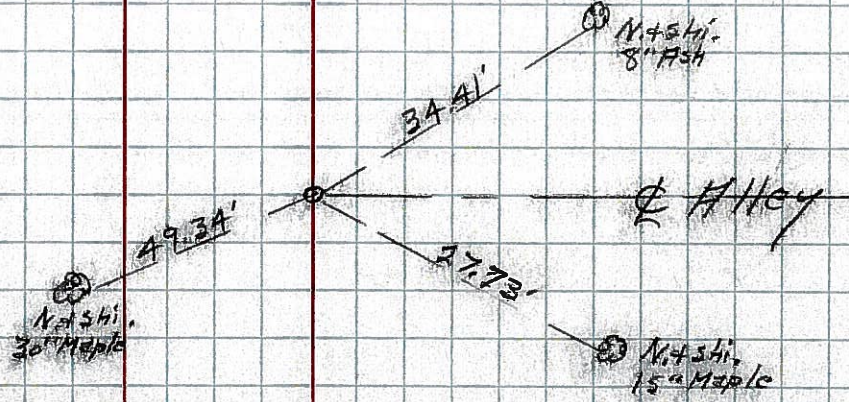
33-B

P.O.T. 220+31.55
P.K. Nail



33-A

P.O.T. 217+48.37
P.K. Nail



Bot. Brick
5 Shrub Bed
Cur.
Filling station
& Recreation
Hall
Shrub Bed