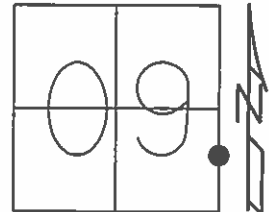


O.D.O.T. DISTRICT 2 SURVEY OFFICE (USE ONLY)

PERSONNEL _____ REFERENCE NO. 34 SHEET 50 OF 64
 NOTES RHOADES DATE 08-20-2015 ROUTE SR 19
 H.C. O'DONNELL WEATHER FAIR COUNTY SENECA
 R.C. RHOADES TEMP. 69°F TOWNSHIP BLOOM
 SECTION 9
 T 1 N R 16 E

TYPE MONUMENT PK/WASHER
 ON SURFACE - ~~BELOW~~ ON
 LEFT - ☉ PAV'T - RIGHT ON
10' TO RT. EDGE PAVEMENT
 S.L.M. 228+16.07



Grid: Northing: 506520.2256 Easting: 1826387.8061

RECORD POT
 STA. 228+00
 FD. PK/WASHER
 ATOP RR.SP.K.
 10-08-85

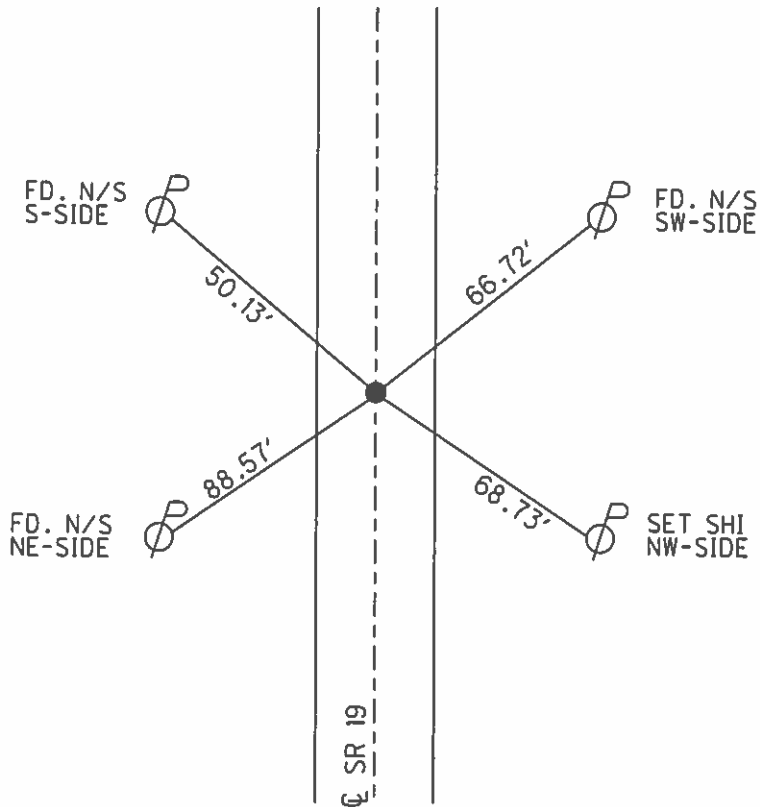
SET PK/WASHER
 09-28-92, JLR

FD. PK/WASHER
 12-5-13, JMR

GPS, REF34
 1-10-14, EBW

GPS, REF34
 8-20-15

SET MAG/WASHER
 GPS, NEWREF34
 7-22-16, JFO



O.D.O.T. DISTRICT 2 SURVEY OFFICE (USE ONLY)

PERSONNEL _____

REFERENCE NO. 34

SHEET 50 OF 62

NOTES CANTERBURY

DATE 04-20-06

ROUTE SR 19

H.C. MICKLOVICK

WEATHER FAIR

COUNTY SENECA

R.C. HANKE

TEMP. +70°

TOWNSHIP BLOOM

SECTION 16

T 1 N R 16 E

TYPE MONUMENT FD. PK/WASHER

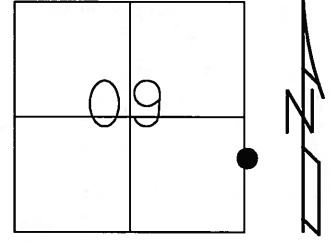
ON SURFACE = ~~BELOW~~ ON SURFACE

~~LEFT~~ - C PAV'T - ~~RIGHT~~ ON CL. SR.#19

10' TO RT. EDGE OF CURB

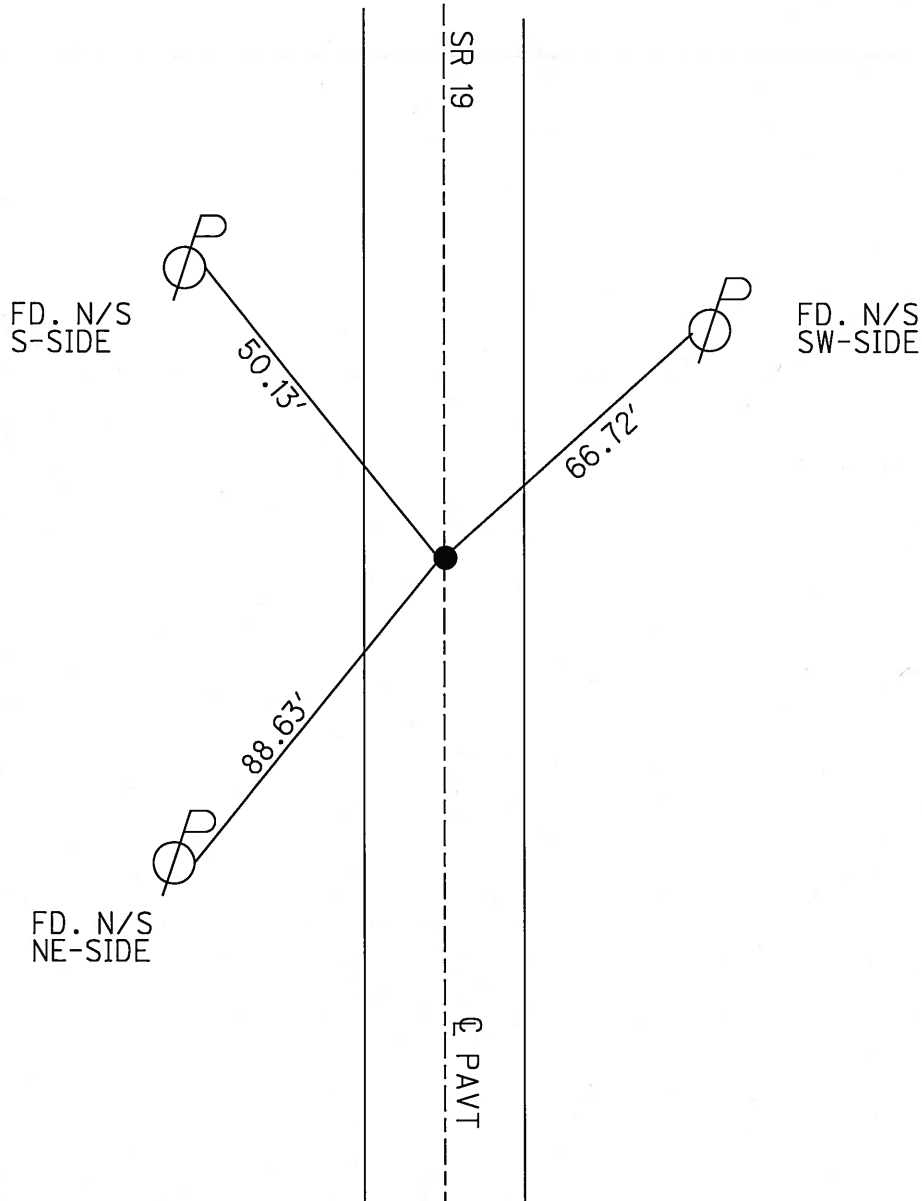
S.L.M. 227+86 (SV50)

Grid: Northing: _____ Easting: _____



RECORD POT
STA. 228+00
FD. PK/WASHER
ATOP RR.SPK.
10-08-85

SET PK/WASHER
09-28-92 JLR



O.D.O.T. DISTRICT 2 SURVEY OFFICE

PERSONNEL

REFERENCE NO. 34

SHEET 43 OF 53

NOTES Cheney

H.C. RIPPLE

R.C. BARBOUR

Geyman

DATE 6-23-1992

WEATHER CLOUDY

TEMP. 53°

ROUTE #19

COUNTY Seneca

TOWNSHIP Bloom

SECTION 9

T 1 N R 16 E

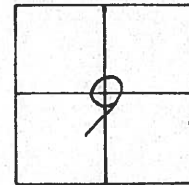
TYPE MONUMENT PK/WASHER

ON SURFACE - ~~BELOW~~ ON

~~LEFT - C. PAV'T. - RIGHT~~ yes

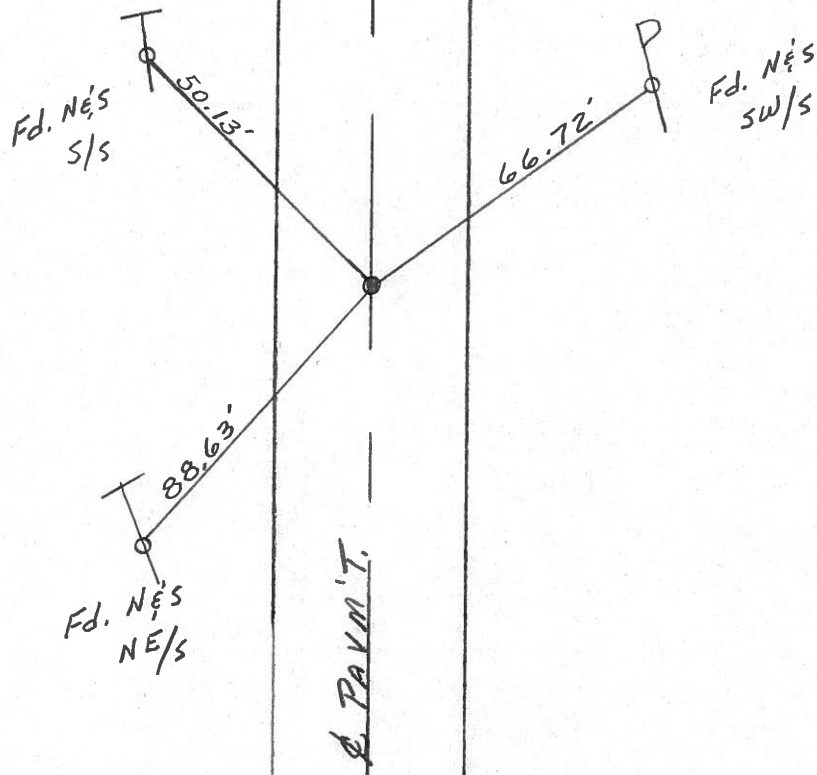
10' TO RT. EDGE PAVEMENT

S.L.M. 227+86



RECORD: 10/8/1985
 PK/WASHER ATOP R.R. SPK.
 STA. 228+00 (P.O.T.)

SET PK/WASHER
 9-28-1992
 J.L.R.



O.D.O.T. DISTRICT 2 SURVEY OFFICE

PERSONNEL

REFERENCE NO. 34

SHEET 43 OF

NOTES C. RONIN Vac.

DRAWN 10/23/85

H.C. RIPPLE

DATE 10/8/85

R.C. BARBOUR

WEATHER SUNNY

GEYMAN

TEMP. 63°

ROUTE # 19

COUNTY SENECA

TOWNSHIP BLOOM

SECTION 9

T. 1 N. R 16 E

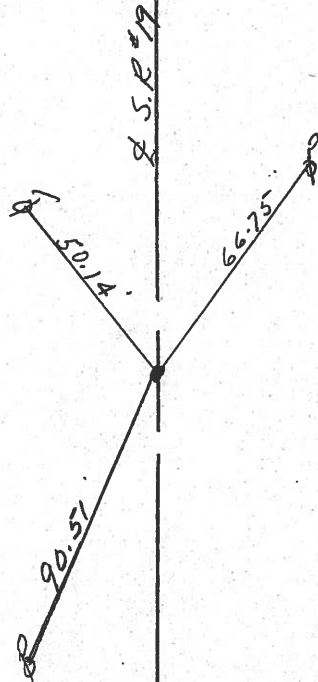
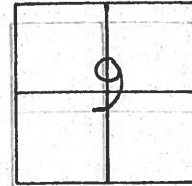
TYPE MONUMENT P.K. WASHER TOP RR SPIKE

ON SURFACE - BELOW ON SURFACE

LEFT - ☉ PAV'T. - RIGHT E PAV'T.

TO EDGE PAVEMENT

S.L.M. 228+00

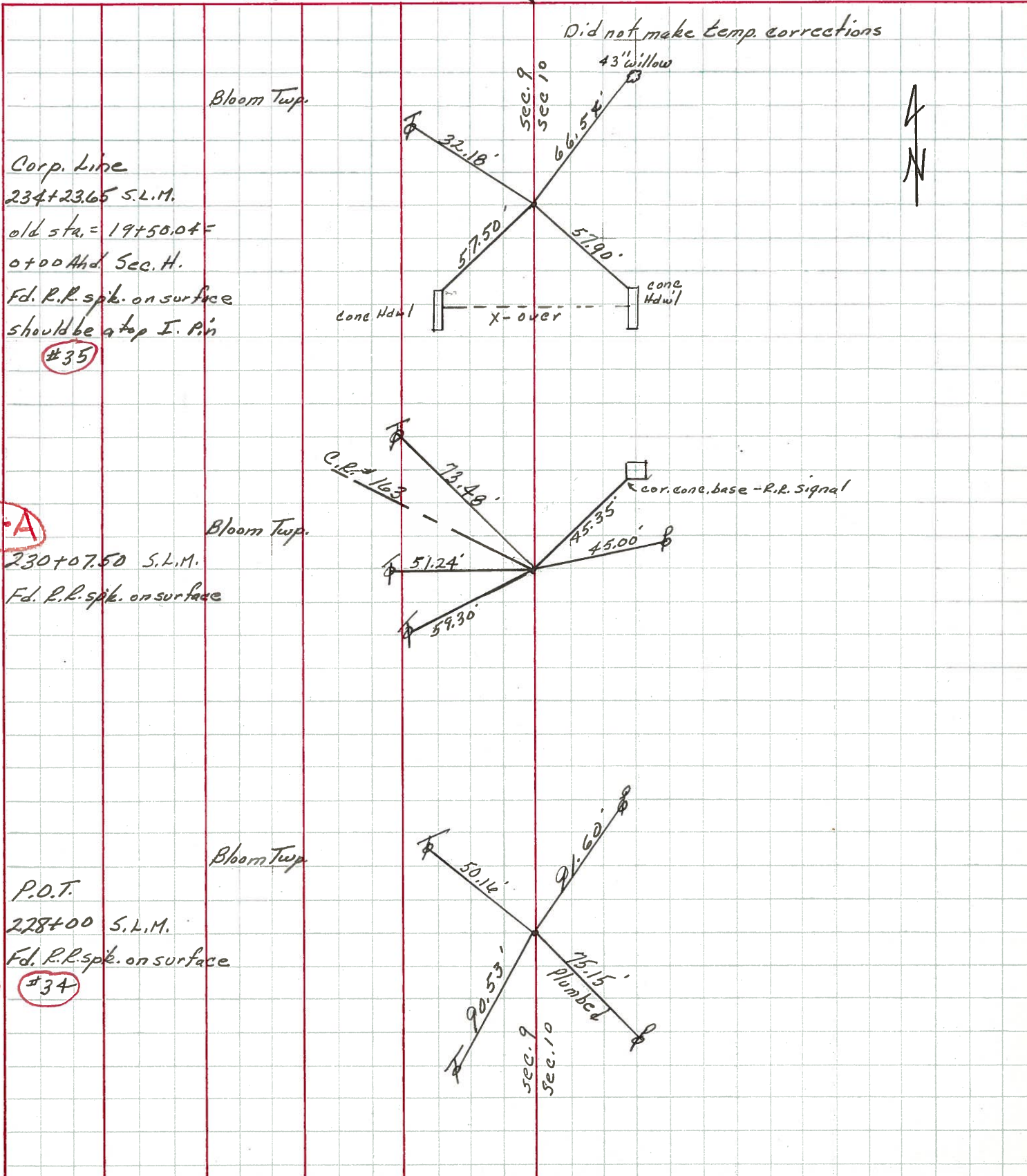


P.O.T.

PERSONNEL	TITLE	PERSONNEL	TITLE
Ash			
Cronin			
Lippie			
Anderson			

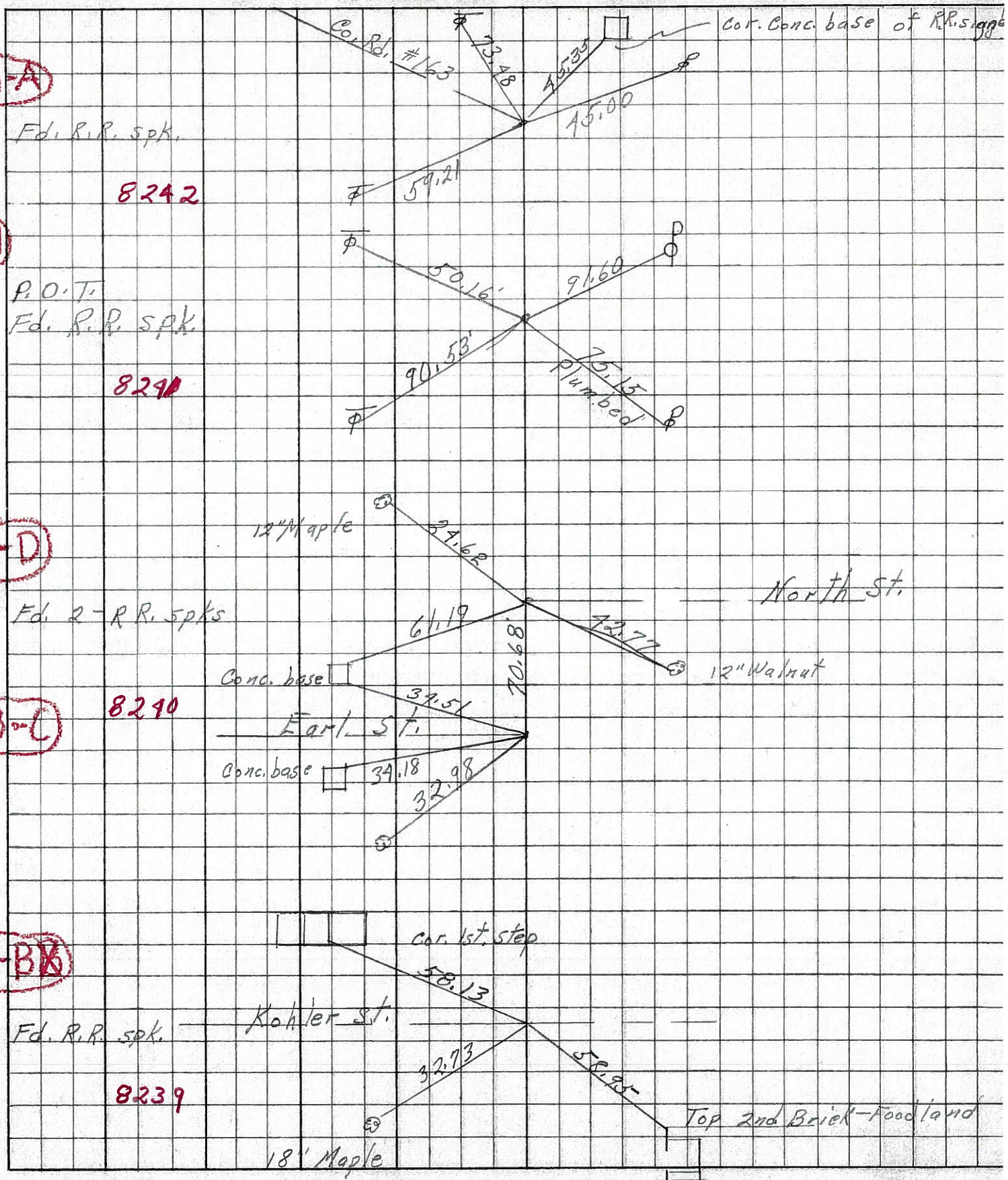
COUNTY Seneca DATE 2-15-72
 S. R. #19 WEATHER cloudy
 SEC. _____ TEMP. 45°

DESCRIPTION Ties for Control Points - Village of Bloomville JOB NO. _____



PERSONNEL	TITLE	PERSONNEL	TITLE	COUNTY	DATE
Schneider				Seneca	7-28-69
Mosser				S. R. 19	WEATHER Fair
Barbour				SEC. Bloomville	TEMP. 75°
Potts					

DESCRIPTION Ties for Control Points JOB NO. _____



34-A

F.d. R.R. spk.

8242

34

P.O.T.
F.d. R.R. spk.

8290

33-D

F.d. 2 - R.R. spks

8290

33-C

Earl St.

33-BK

F.d. R.R. spk.

8239

Kohler St.

Top 2nd Brick-Foodland

PERSONNEL TITLE PERSONNEL TITLE

Msh

& Crow

COUNTY Seneca

DATE Apr. '62

S. R. #19 Bloomville

WEATHER Clear

SEC. Sen-19 (3.56-4.41)

TEMP. 60°

DESCRIPTION

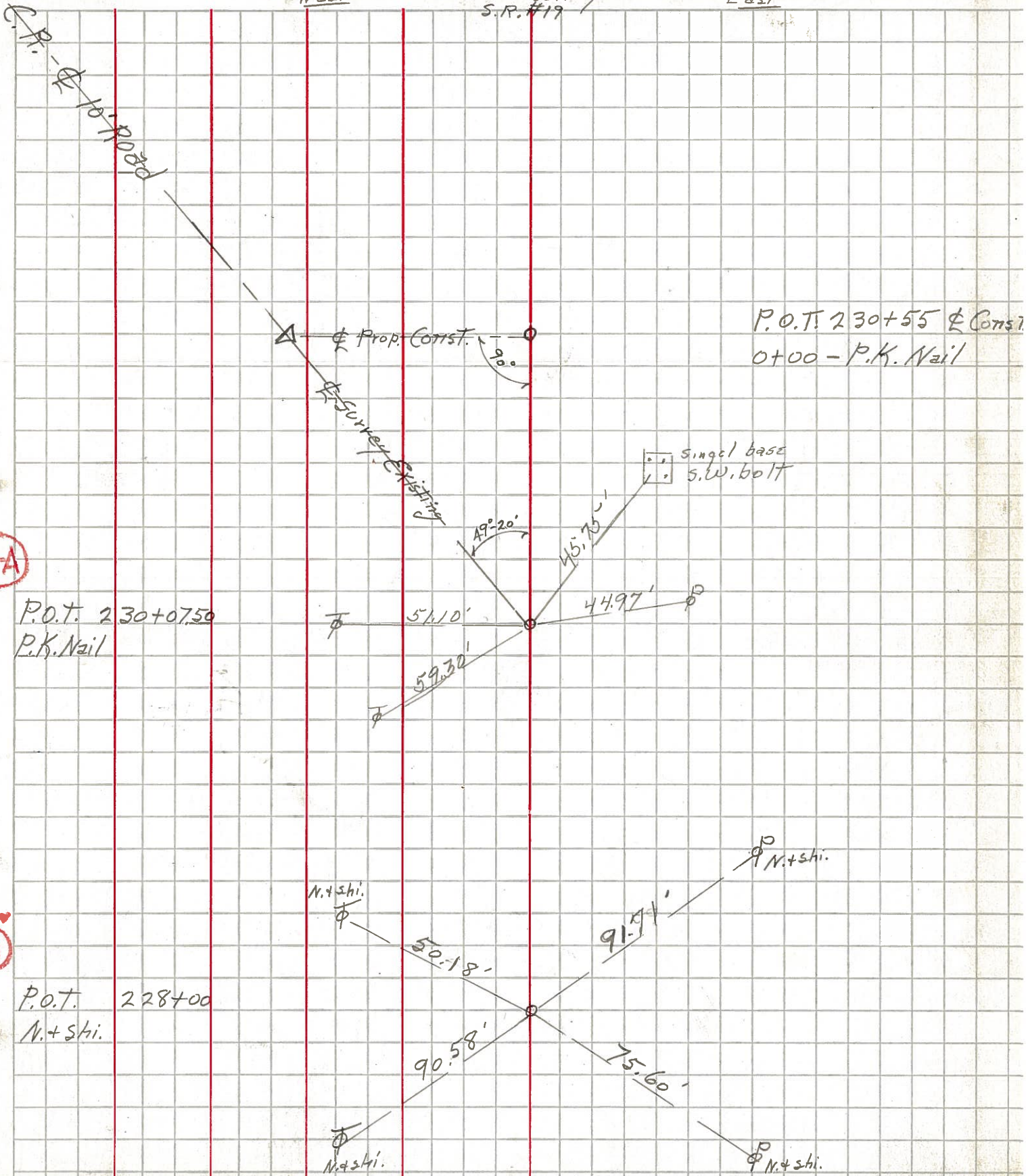
Control Point & Inter. Ties

JOB NO. Const.

LEFT West

CENTER LINE - Survey S.R. #19

RIGHT East



34-A

34

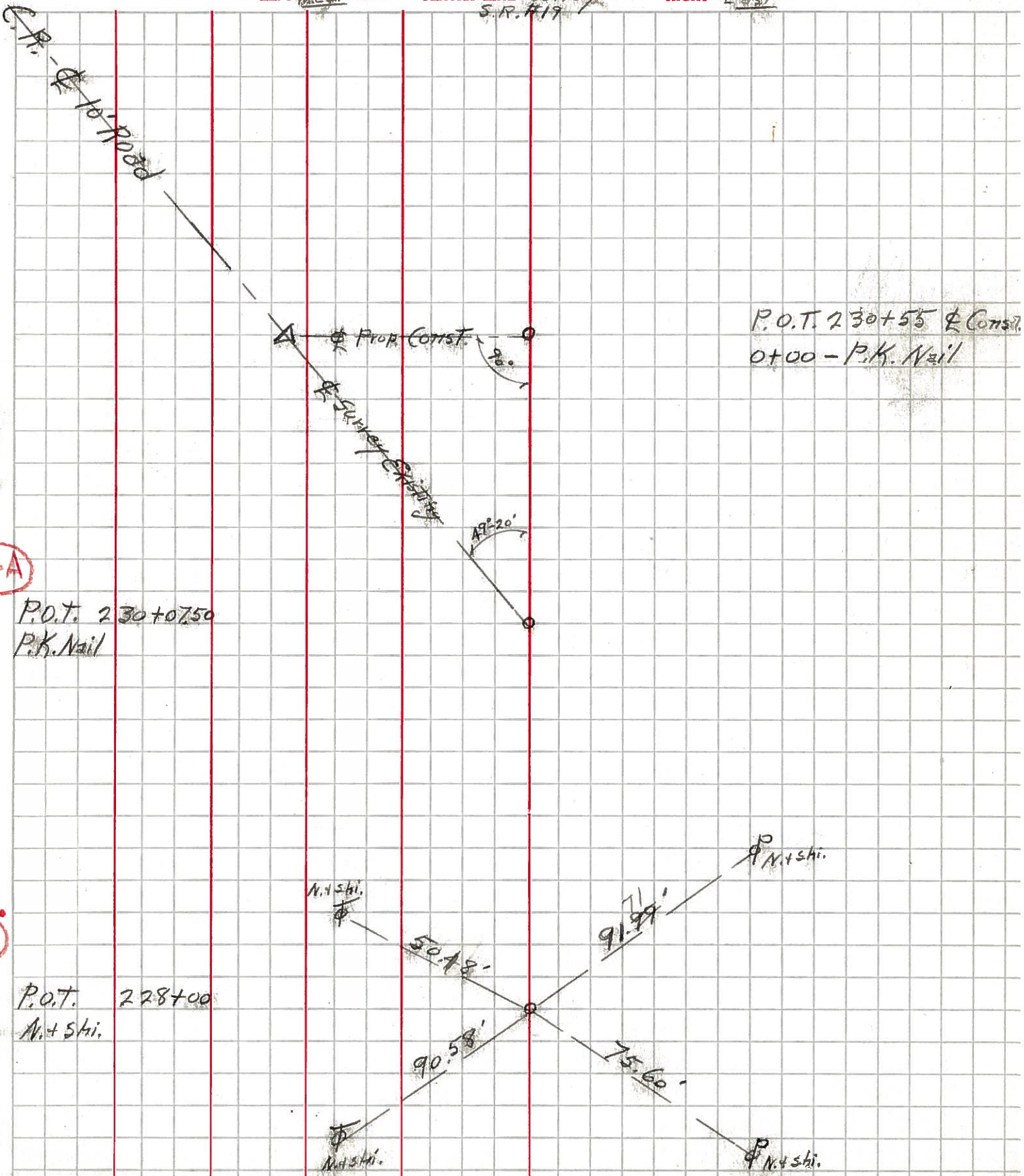
PERSONNEL TITLE PERSONNEL TITLE

COUNTY Seneca DATE Apr. '62

S. R. #19 13/Portaville WEATHER Clear

SEC Sen-19 (3.56-4.41) TEMP 60°

DESCRIPTION Control Point & Inter. Ties LEFT West CENTER LINE - Survey S.R. #19 RIGHT East JOB NO. Const.



34-A

34