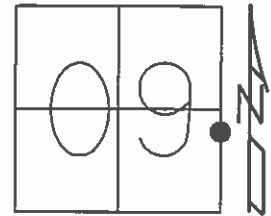


O.D.O.T. DISTRICT 2 SURVEY OFFICE (USE ONLY)

PERSONNEL _____ REFERENCE NO. 35 SHEET 52 OF 64
 NOTES RHOADES DATE 8-20-15 ROUTE SR 19
 H.C. O'DONNELL WEATHER FAIR COUNTY SENECA
 R.C. RHOADES TEMP. 69°F TOWNSHIP BLOOM
 _____ SECTION 9
 _____ T 1 N R 16 E

TYPE MONUMENT PK/WASHER
 ON SURFACE - ~~BELOW~~ ON
~~LEFT~~ - Q PAV'T - RIGHT 2'
8' TO RT. EDGE PAVEMENT
 S.L.M. 230+44.54
 Grid: Northing: 506748.6186 Easting: 1826391.0485



RECORD POT
 STA. 234+23.65 =OLD STA.
 19+50.04BK=0+00AHD
 SO. SPK.
 ATOP RR. SPK
 ATOP IRON PIN
 10-09-85

NOTE: 34A TO 35 =20.78'

SET PK/WASHER
 9-28-92, JLR

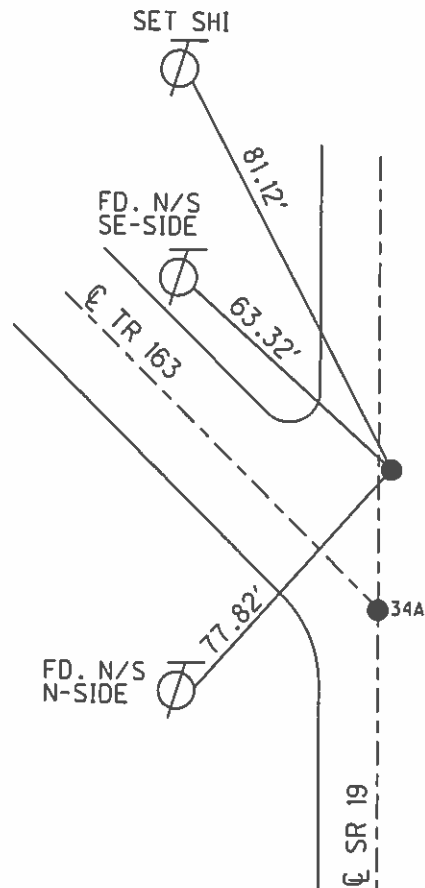
MB-NOTES
 MC-R.C.
 CB-H.C.
 FOR PIPE REMOVAL
 6-18-03

SET PK/WASHER
 FROM TIES
 1-16-14

GPS
 1-22-14

GPS, REF35
 8-20-15

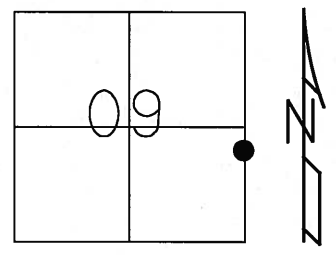
SET MAG/WASHER
 GPS, NEWREF35
 7-22-16, JFO



O.D.O.T. DISTRICT 2 SURVEY OFFICE (USE ONLY)

PERSONNEL	REFERENCE NO. <u>35</u>	SHEET <u>52</u> OF <u>62</u>
NOTES <u>CANTERBURY</u>	DATE <u>04-20-06</u>	ROUTE <u>SR 19</u>
H.C. <u>MICKLOVICK</u>	WEATHER <u>FAIR</u>	COUNTY <u>SENECA</u>
R.C. <u>HANKE</u>	TEMP. <u>+70°</u>	TOWNSHIP <u>BLOOM</u>
		SECTION <u>16</u>
		T <u>1</u> N R <u>16</u> E

TYPE MONUMENT FD. PK/WASHER
 ON SURFACE - ~~BELOW~~ ON SURFACE
~~LEFT - C PAV'T~~ - RIGHT 2.0' RT.
8' TO RT. EDGE OF CURB
 S.L.M. 234+09 (SV52)
 Grid: Northing: _____ Easting: _____

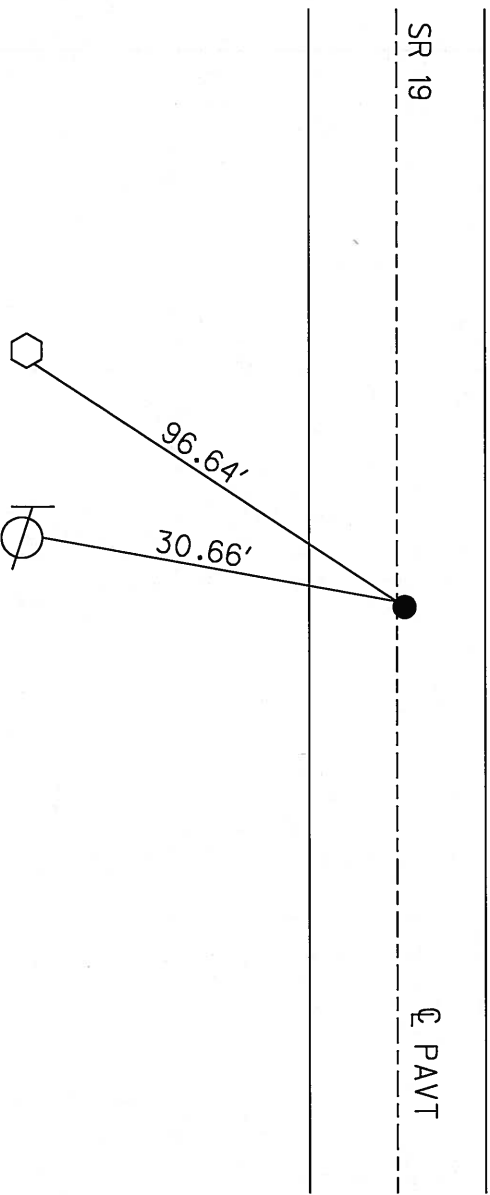


RECORD POT
 STA. 234+23.65
 SQ. SPK. ATOP
 RR. SPK. ATOP I.P.
 10-08-85

SET PK/WASHER
 09-28-92 JLR

N/S S-SIDE
 WOOD POST

SET N/S
 E-SIDE



NOTE: OLD STA.19+50.04BK=0+00AH

O.D.O.T. DISTRICT 2 SURVEY OFFICE

PERSONNEL

REFERENCE NO. 35

SHEET 45 OF 53

NOTES Cheney

H.C. RIPPLE

R.C. BARBOUR

Geyman

DATE 6-23-1992

WEATHER CLOUDY

TEMP. 53°

ROUTE #19

COUNTY Seneca

TOWNSHIP Bloom

SECTION 9

T 1 N R 16 E

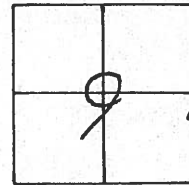
TYPE MONUMENT PK/WASHER

ON SURFACE - ~~BELOW~~ ON

~~LEFT~~ - C PAV'T. - RIGHT 2'

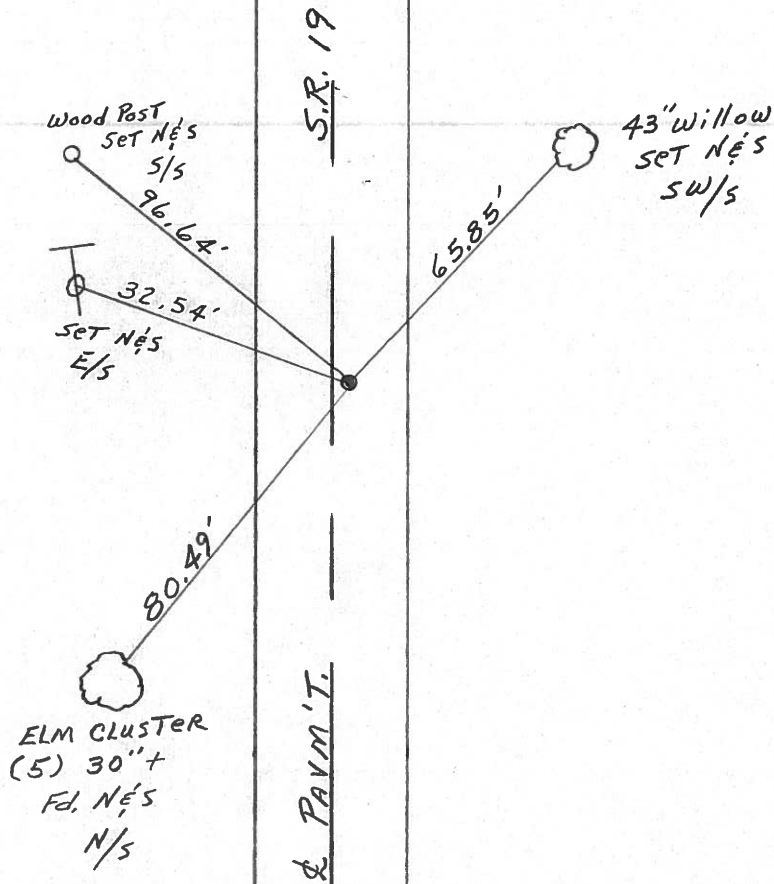
8' TO RT. EDGE PAVEMENT

S.L.M. 234+09



Record; 10-09-85
 P.O.T. ? STA. 234+23.65 = OLD STA.
 19+50.04 BK = 0+00 Ahd.
 Sq. SPK. ATOP RR. SPK. ATOP
 IRON PIN

SET PK/WASHER
 9-28-1992
 J.L.R.



O.D.O.T. DISTRICT 2 SURVEY OFFICE

PERSONNEL

REFERENCE NO. 35

SHEET 44 OF _____

NOTES CROWN VAC.

H.C. RIPPLE

R.C. BARBOUR

GEYMAN

DATE 10/9/85

WEATHER SUNNY

TEMP. 66°

ROUTE #19

COUNTY SENECA

TOWNSHIP BLOOM

SECTION 9

T 1 N 16 E

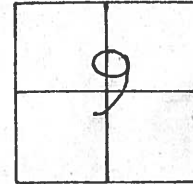
TYPE MONUMENT Sg. SPK. ATOP P.R. SPK. ATOP

ON SURFACE - BELOW I.P.M. 1 1/2" below

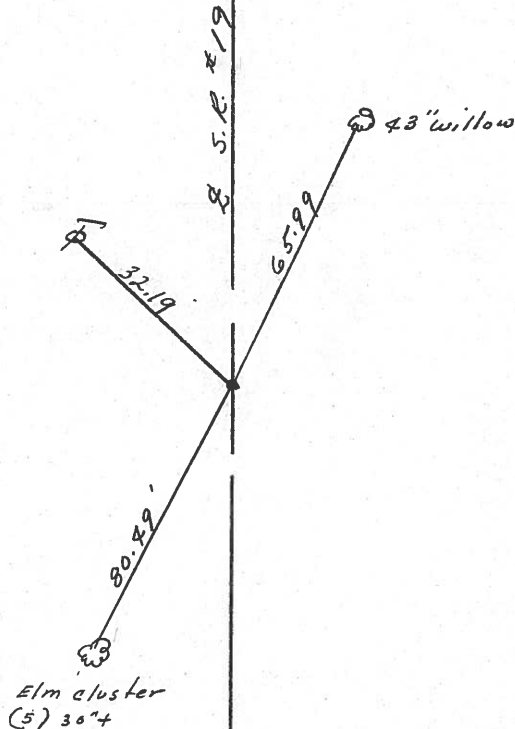
LEFT - & PAV'T. - RIGHT 1 1/2 RT. & PAV'T.

TO EDGE PAVEMENT

S.L.M. 234 + 23.65 = old Sta. 19 + 50.04 Blk = 0 + 00 thd.

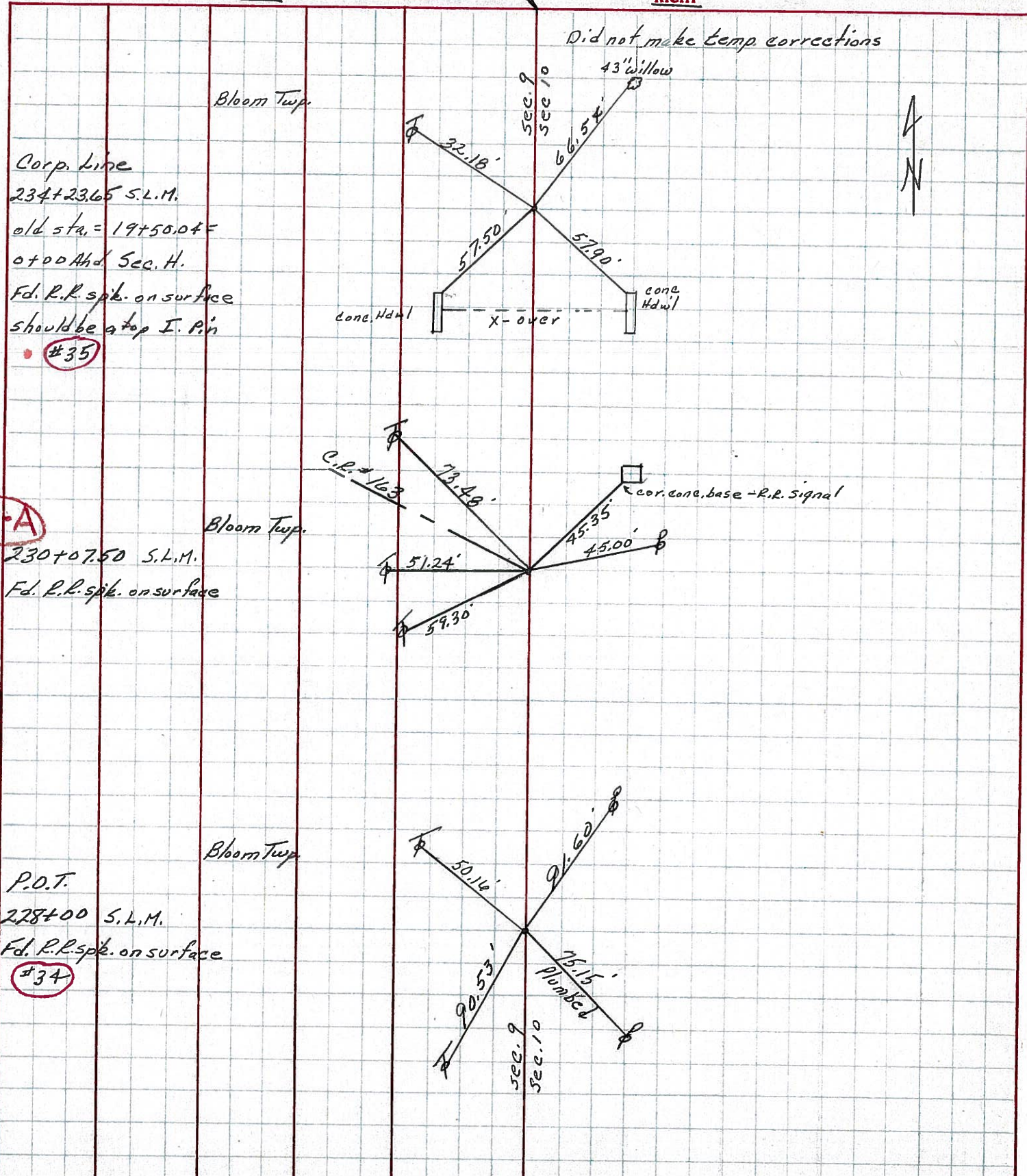


P.O.T. ?



PERSONNEL	TITLE	PERSONNEL	TITLE	COUNTY	DATE
Ash				Seneca	2-15-72
Cronin				S. R. #19	WEATHER cloudy
Ripke				SEC.	TEMP. 45°
Anderson					

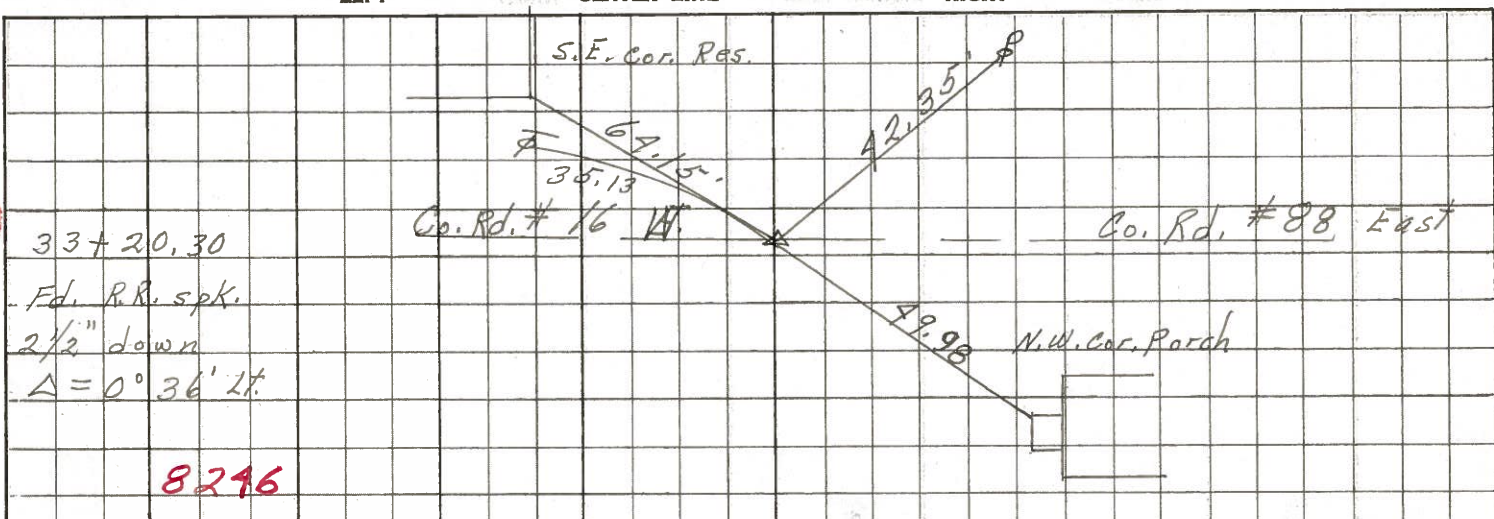
DESCRIPTION *Ties for Control Points - Village of Bloomville* JOB NO.



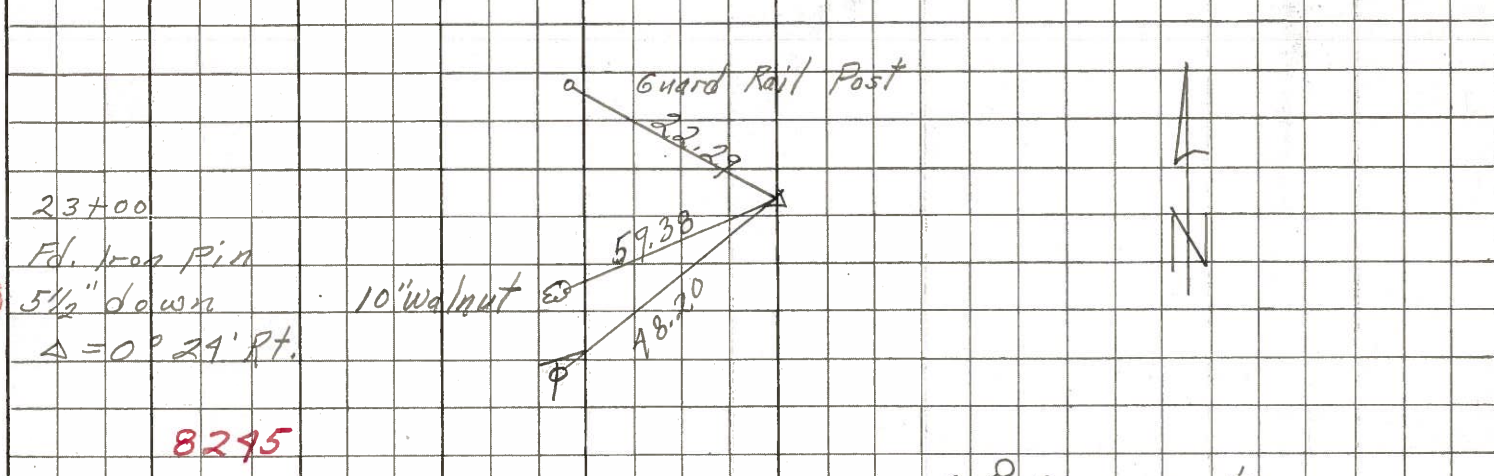
PERSONNEL	TITLE	PERSONNEL	TITLE	COUNTY	DATE
Schneider				Seneca	7-28-69
Mosser				S. R. 19	WEATHER Fair
Barbour				SEC. Bloomville North	TEMP. 75°
Potts					

DESCRIPTION Ties for Control Points JOB NO. _____

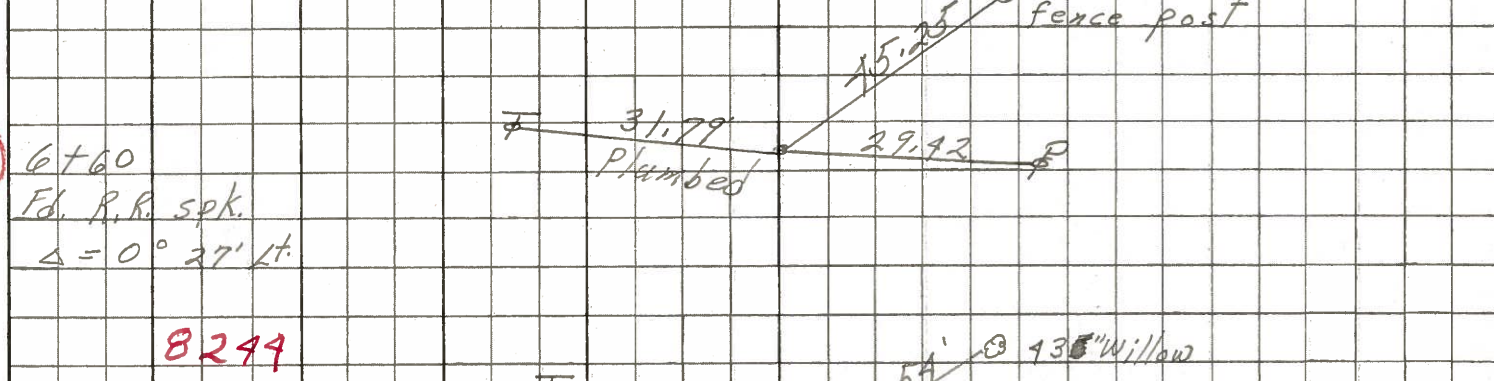
38



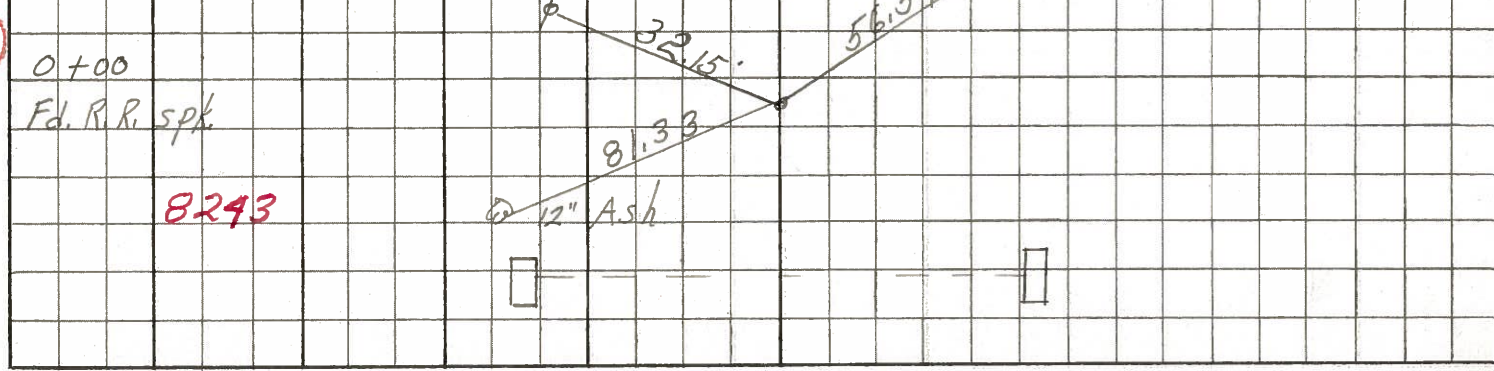
37



36



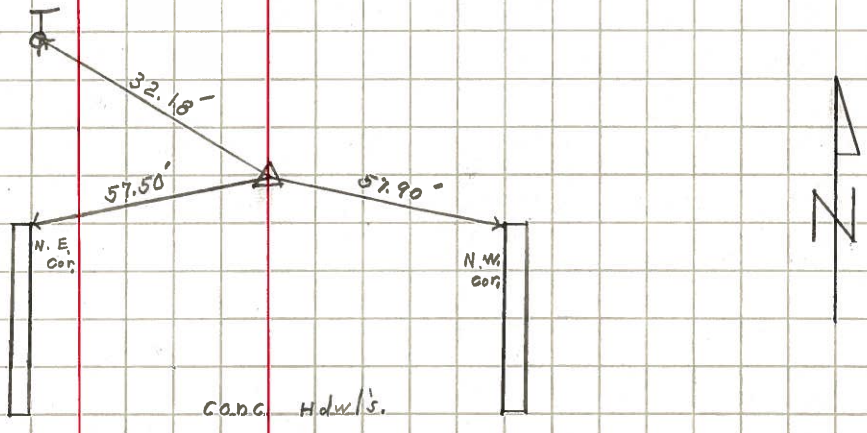
35



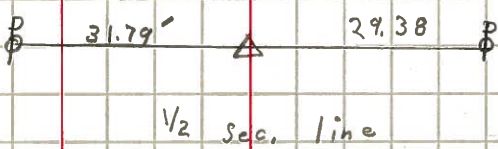
PERSONNEL	TITLE	PERSONNEL	TITLE	COUNTY <u>Seneca</u>	DATE <u>3/13/64</u>
<u>Krabill</u>				S. R. # <u>19</u>	<u>Bloomville</u> WEATHER
<u>Kowalski</u>				SEC. <u>N. of Bloomville</u>	TEMP.
<u>Bruggeman</u>					

DESCRIPTION Control points LEFT CENTER LINE RIGHT JOB NO.

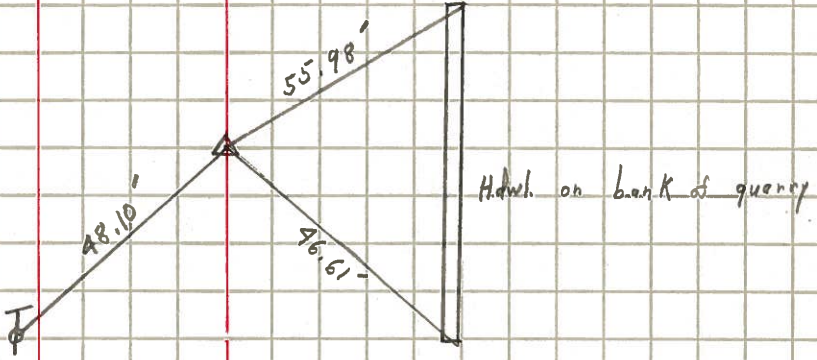
35
 STA. 234 + 23.69
 R.R. Spike
 $\Delta = 0^\circ - 0''$
 N. Corp. line
 # 1



36
 STA. 240 + 85.54
 R.R. Spike
 Sec. H # 156
 $\Delta = 0^\circ 28' Lt.$
 # 2



37
 STA. 257 + 23.90
 R.R. Spike
 $\Delta = 0^\circ 29' Rt.$
 (P.K.) # 3



38
 STA. 267 + 41.80
 R.R. Spike
 $\Delta = 0^\circ 36' Lt.$
 (P.K.) # 4

