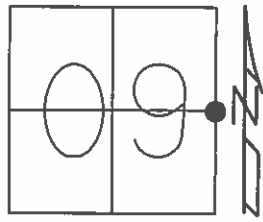


O.D.O.T. DISTRICT 2 SURVEY OFFICE (USE ONLY)

PERSONNEL \_\_\_\_\_ REFERENCE NO. 36 SHEET 53 OF 64

NOTES RHOADES DATE 8-24-15 ROUTE SR 19  
 H.C. O'DONNELL WEATHER SUNNY COUNTY SENECA  
 R.C. RHOADES TEMP. 60° TOWNSHIP BLOOM  
 \_\_\_\_\_ SECTION 09  
 \_\_\_\_\_ T 1 N R 16 E

TYPE MONUMENT PK /WASHER  
 ON SURFACE - ~~BELOW~~ ON \_\_\_\_\_  
~~LEFT~~ - Q PAV'T - RIGHT 1.0'  
9.4' TO RT. EDGE PAVEMENT  
 S.L.M. 241+01.79



Grid: Northing: 507805.8343 Easting: 1826405.0197

RECORD  
 PI 00°27'00"  
 OLD STA. 6+60  
 10-09-85

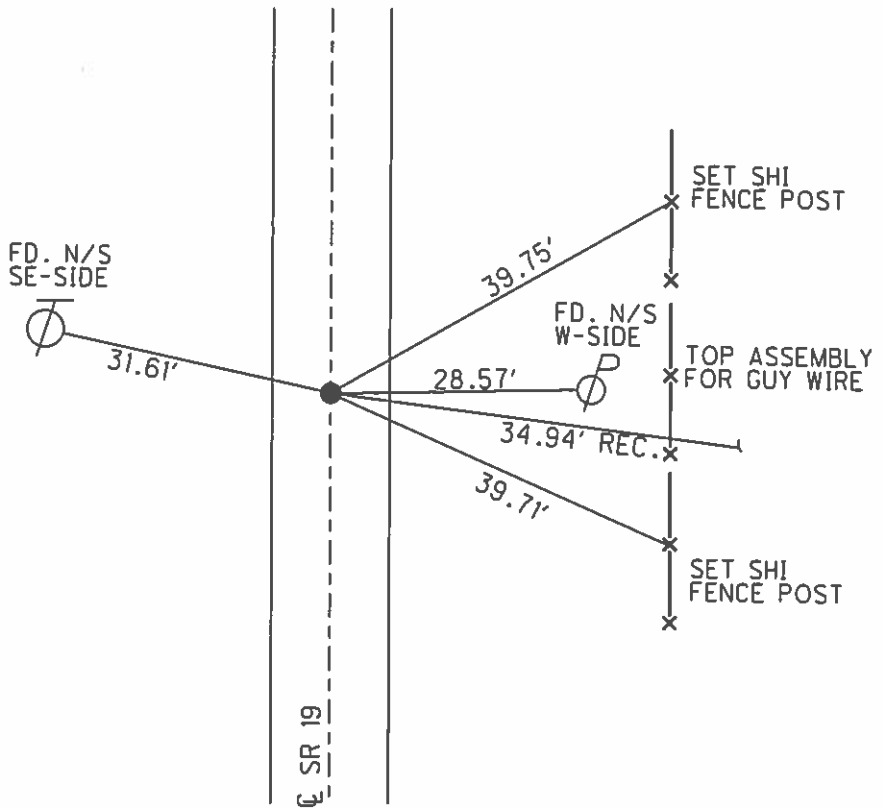
SET PK/WASHER  
 09-28-92, JLR

FD PK/WASHER  
 12-23-14, TMR

GPS, REF36  
 1-10-14, EBW

GPS, REF36  
 8-24-15

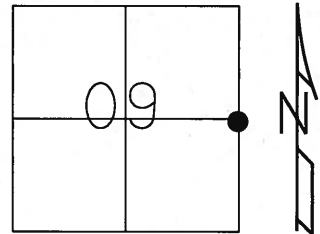
HOLE FD  
 FD RR SPIKE  
 3.5" DOWN  
 GPS, NEWREF36  
 7-22-16



O.D.O.T. DISTRICT 2 SURVEY OFFICE (USE ONLY)

PERSONNEL	REFERENCE NO. <u>36</u>	SHEET <u>53</u> OF <u>    </u>
NOTES <u>CANTERBURY</u>	DATE <u>04-29-06</u>	ROUTE <u>SR 19</u>
H.C. <u>ROUSOS</u>	WEATHER <u>FAIR</u>	COUNTY <u>SENECA</u>
R.C. <u>MOSER</u>	TEMP. <u>+80°</u>	TOWNSHIP <u>BLOOM</u>
		SECTION <u>16</u>
		T <u>1</u> N R <u>16</u> E

TYPE MONUMENT FD. PK/WASHER  
 ON SURFACE - ~~BELOW~~ ON SURFACE  
~~LEFT - C PAVT~~ - RIGHT 1.0' RT.  
9.4' TO RT. EDGE OF CURB  
 S.L.M. 240+79 (SV53)

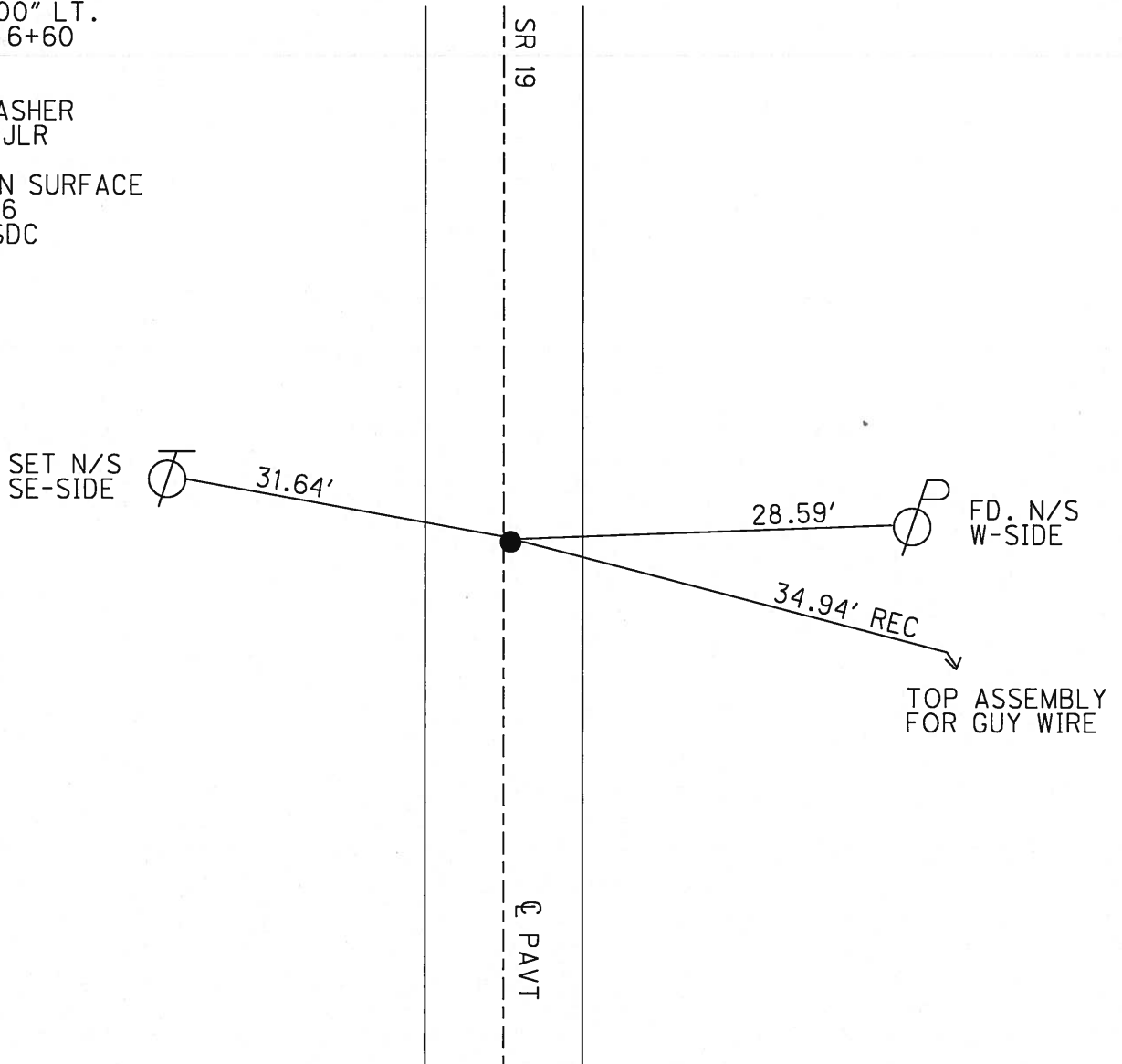


Grid: Northing: 507805.834 Easting: 1826405.110

RECORD  
 PI 00°27'00" LT.  
 OLD STA. 6+60  
 10-09-85

SET PK/WASHER  
 09-28-92 JLR

FD P.K. ON SURFACE  
 GPS, REF36  
 8/10/12, SDC



O.D.O.T. DISTRICT 2 SURVEY OFFICE

PERSONNEL

REFERENCE NO. 36

SHEET 46 OF 53

NOTES Cheney

H.C. RIPPLE

R.C. BARBOUR

Geyman

DATE 6-23-1992

WEATHER CLOUDY

TEMP. 53°

ROUTE #19

COUNTY Seneca

TOWNSHIP Bloom

SECTION 9

T1 N R 16 E

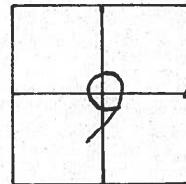
TYPE MONUMENT PK/WASHER

ON SURFACE - ~~BELOW~~ ON

~~LEFT~~ - C PAV'T. - RIGHT 1'

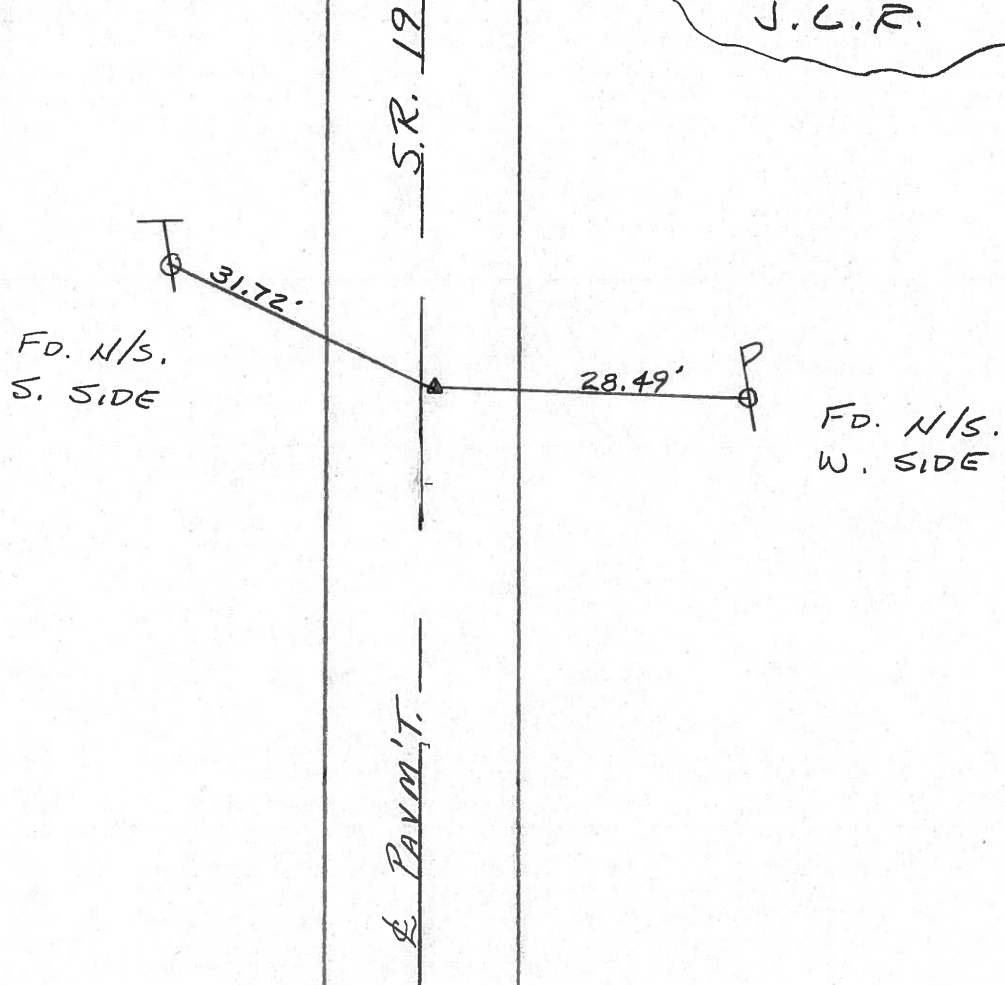
9' TO RT. EDGE PAVEMENT

S.L.M. 240+71



Record: 10-09-85  
 P.I.  $\Delta = 00^{\circ} 27' 00''$  LT.  
 STA. 6+60

SET PK/WASHER  
 9-28-1992  
 J.L.R.



# O.D.O.T. DISTRICT 2 SURVEY OFFICE

PERSONNEL \_\_\_\_\_

REFERENCE NO. 36 SHEET 45 OF \_\_\_\_\_

NOTES CROWN VAC.

DRAWN \_\_\_\_\_

H.C. RIPPLE

DATE 10/9/85

ROUTE #19

R.C. BARBOUR

WEATHER SUNNY

COUNTY SENECA

GEYMAN

TEMP. 66°

TOWNSHIP BLOOM

SECTION 9

T. 1 N. R. 16 E.

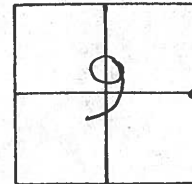
TYPE MONUMENT R.R. SPIKE

ON SURFACE - BELOW 1" BELOW

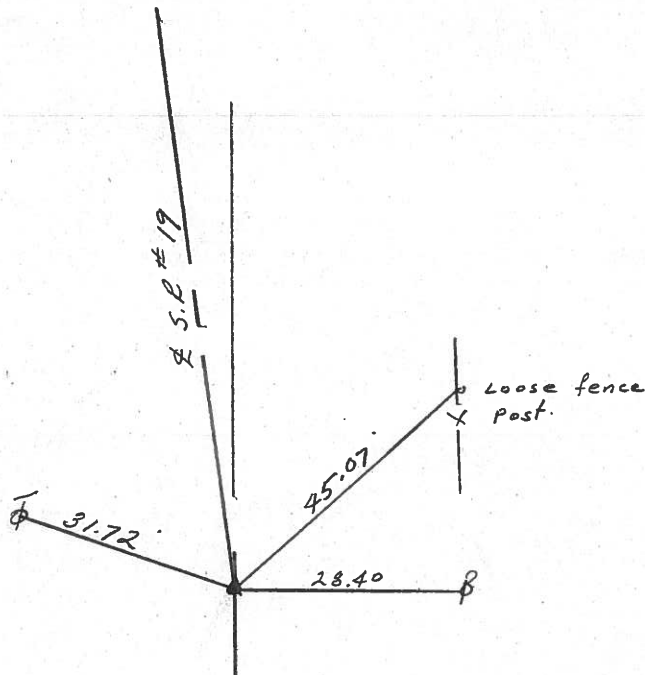
LEFT - ☉ PAV'T. - RIGHT ☉ PAVT.

TO EDGE PAVEMENT

S.L.M. 6+60

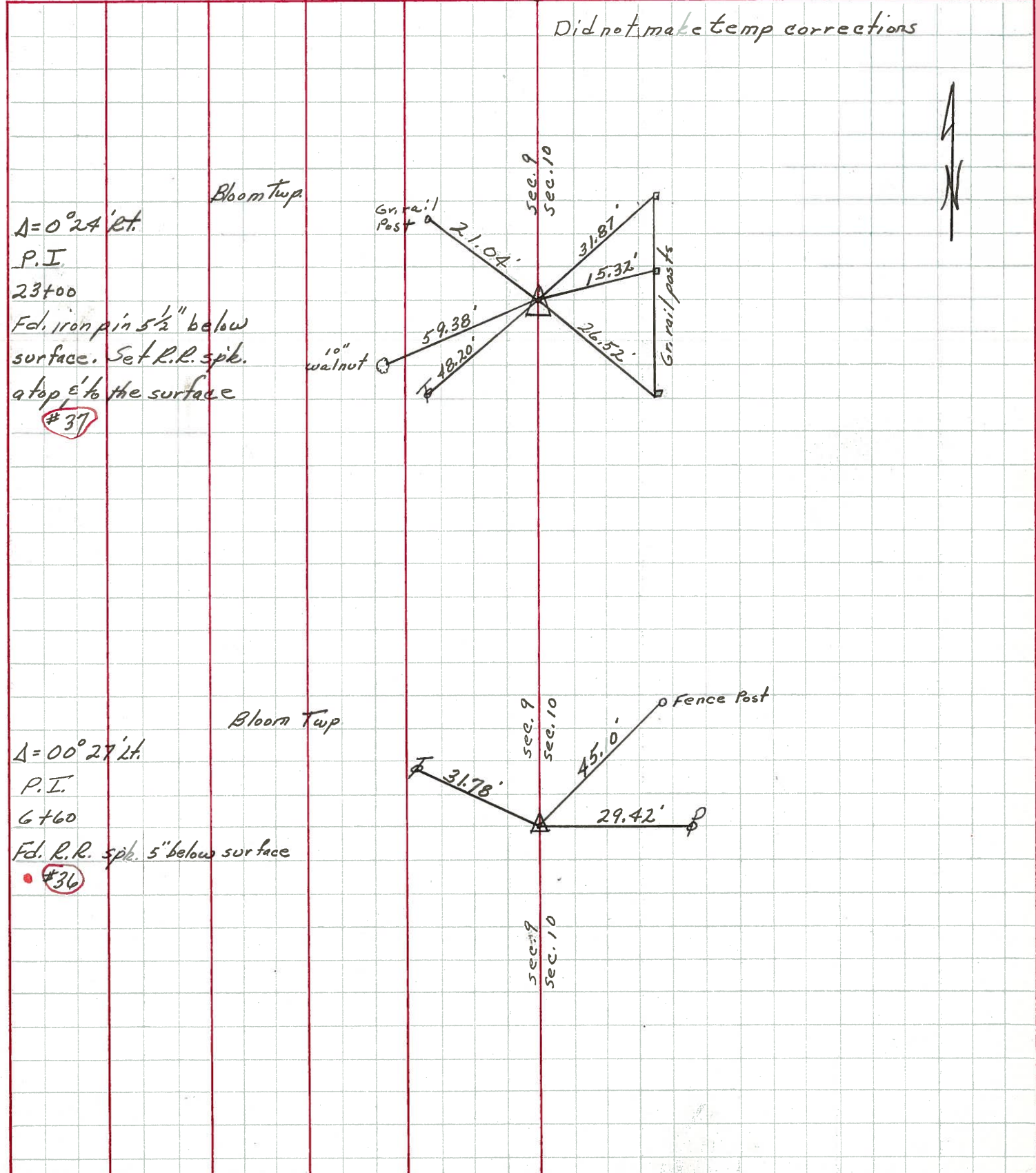


P.I.  
Δ = 00°27'00" Lt.  
6+60



PERSONNEL	TITLE	PERSONNEL	TITLE	COUNTY	DATE
Ash	- Sick leave			Seneca	3/15/72
Cronin				S. R. #19	WEATHER cloudy
Ripple				SEC. H	TEMP. 35°
Anderson					

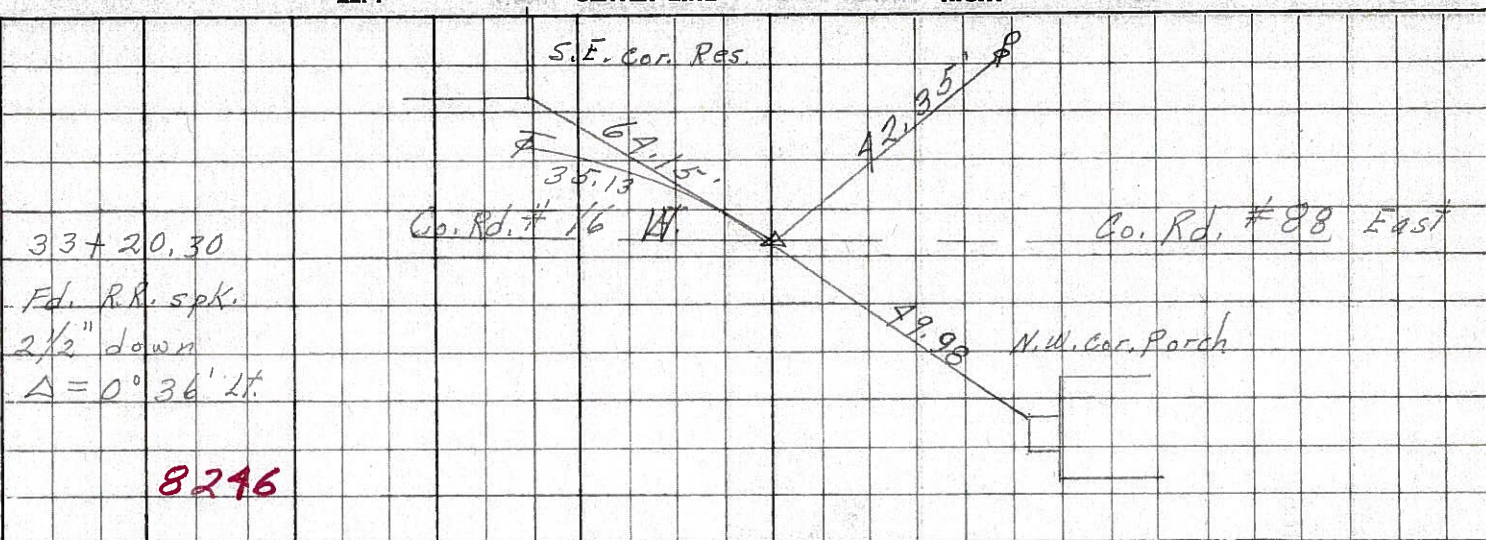
DESCRIPTION Control Point Ties - Bloomville Corp. North JOB NO. \_\_\_\_\_



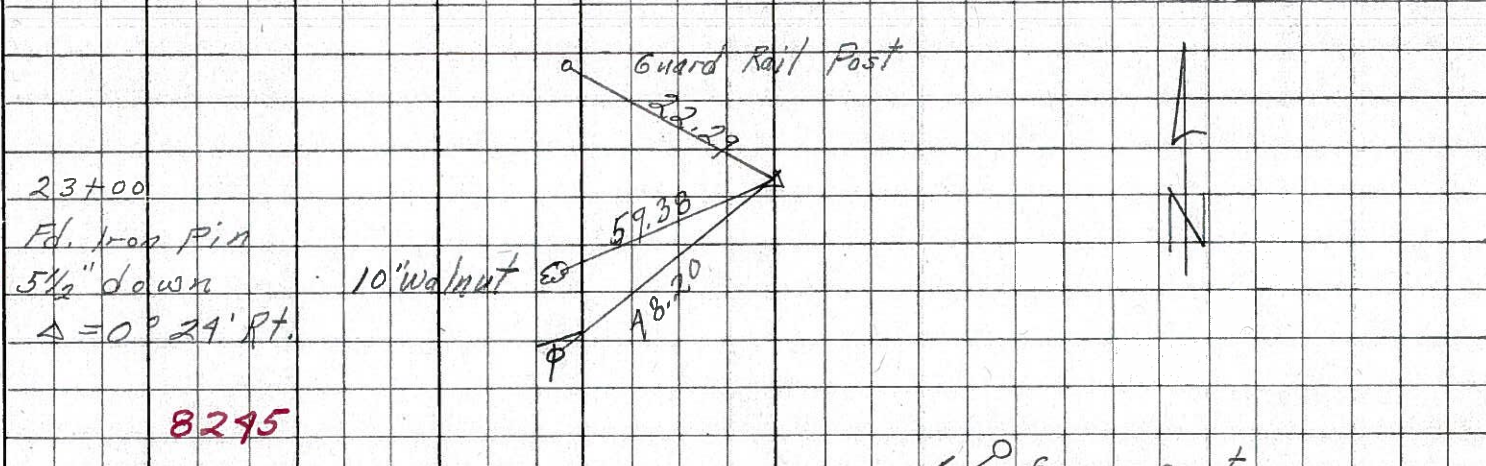
PERSONNEL	TITLE	PERSONNEL	TITLE	COUNTY	<u>Seneca</u>	DATE	<u>7-28-69</u>
<u>Schneider</u>				S. R.	<u>19</u>	WEATHER	<u>Fair</u>
<u>Mosser</u>				SEC.	<u>Bloomville North</u>	TEMP.	<u>75°</u>
<u>Barbour</u>							
<u>Potts</u>							

DESCRIPTION Ties for Control Points JOB NO. \_\_\_\_\_

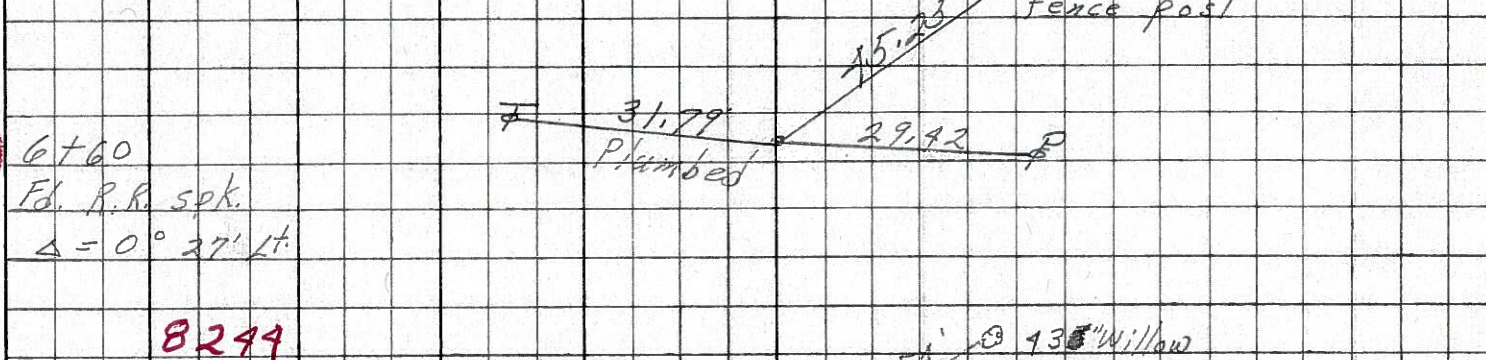
(38)



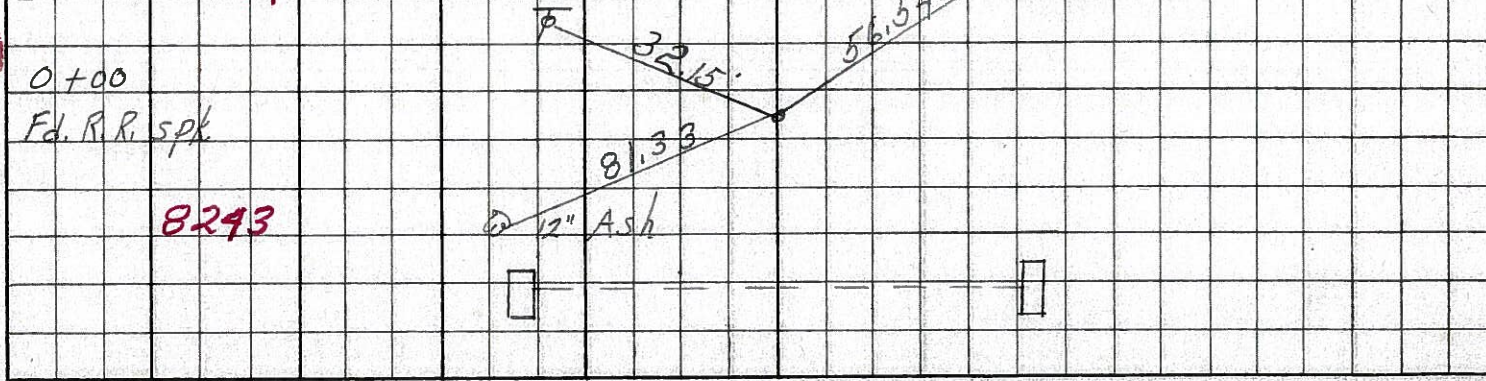
(37)



(36)



(35)



PERSONNEL TITLE PERSONNEL TITLE

COUNTY Seneca DATE 3/13/64

Krabill  
Kowalski  
Bruggeman

S. R. # 19 Bloomville WEATHER

SEC. N. of Bloomville TEMP.

DESCRIPTION Control Points

LEFT

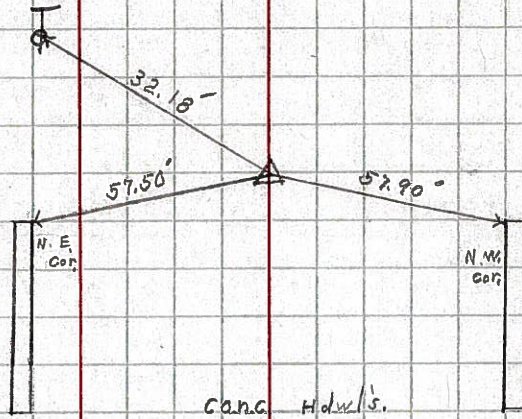
CENTER LINE

RIGHT

JOB NO.

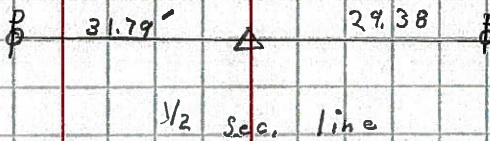
35

STA. 234 + 23.69  
R.R. Spike  
 $\Delta = 0^\circ - 8''$   
N. Corp. line  
# 1



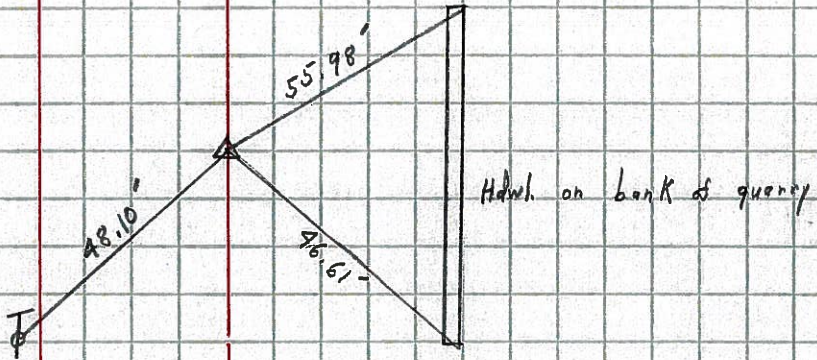
36

STA. 240 + 85.54  
R.R. Spike  
Sec. H # 156  
 $\Delta = 0^\circ 28' Lt.$   
# 2



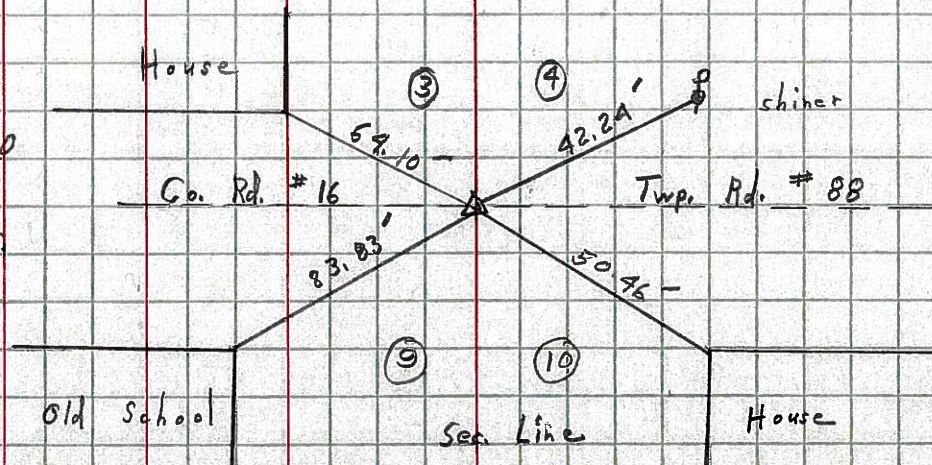
37

STA. 257 + 23.90  
R.R. Spike  
 $\Delta = 0^\circ 29' Rt.$   
(P.K.) # 3



38

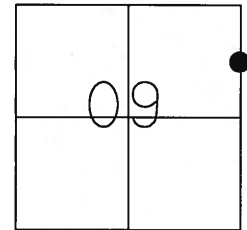
STA. 267 + 41.80  
R.R. Spike  
 $\Delta = 0^\circ 36' Lt.$   
(P.K.) # 4



O.D.O.T. DISTRICT 2 SURVEY OFFICE (USE ONLY)

PERSONNEL	REFERENCE NO. <u>37</u>	SHEET <u>54</u> OF <u>    </u>
NOTES <u>CANTERBURY</u>	DATE <u>05-29-07</u>	ROUTE <u>SR 19</u>
H.C. <u>ROUSOS</u>	WEATHER <u>FAIR</u>	COUNTY <u>SENECA</u>
R.C. <u>MOSE</u>	TEMP. <u>+80°</u>	TOWNSHIP <u>BLOOM</u>
		SECTION <u>16</u>
		T <u>1</u> N R <u>16</u> E

TYPE MONUMENT FD. PK/WASHER  
 ON SURFACE - ~~BELOW~~ ON SURFACE  
 LEFT - ~~C PAVT~~ - RIGHT 1.0' LT.  
9.0' TO LT. EDGE OF CURB  
 S.L.M. 257+17 (SV54)



Grid: Northing: 509444.259 Easting: 1826416.184

RECORD PI 00°24'00" RT.  
 OLD STA. 23+00  
 PK/WASHER ATOP  
 RR.SPK. ATOP IRON ROD  
 10-09-85

SET PK/WASHER  
 09-28-92 JLR

FD P.K. ON SURFACE  
 GPS, REF37  
 8/10/12, SDC

