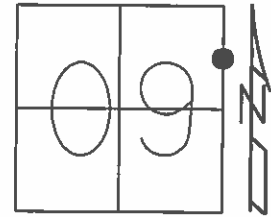


O.D.O.T. DISTRICT 2 SURVEY OFFICE (USE ONLY)

PERSONNEL _____ REFERENCE NO. 37 SHEET 55 OF 64
 NOTES RHOADES DATE 8-24-15 ROUTE SR 19
 H.C. O'DONNELL WEATHER SUNNY COUNTY SENECA
 R.C. RHOADES TEMP. 60°F TOWNSHIP BLOOM
 _____ SECTION 9
 _____ T 1 N R 16 E

TYPE MONUMENT PK/WASHER
 ON SURFACE - ~~BELOW~~ ON
 LEFT - ℄ PAV'T - ~~RIGHT~~ 1.0'
9.0' TO LT. EDGE PAVEMENT
 S.L.M. 257+40.31



Grid: Northing: 509444.3058 Easting: 1826416.3108

RECORD PI 00°24'00" RT.
 OLD STA. 23+00
 PK/WASHER
 ATOP RR.SPK.
 ATOP IRON ROD
 10-09-85

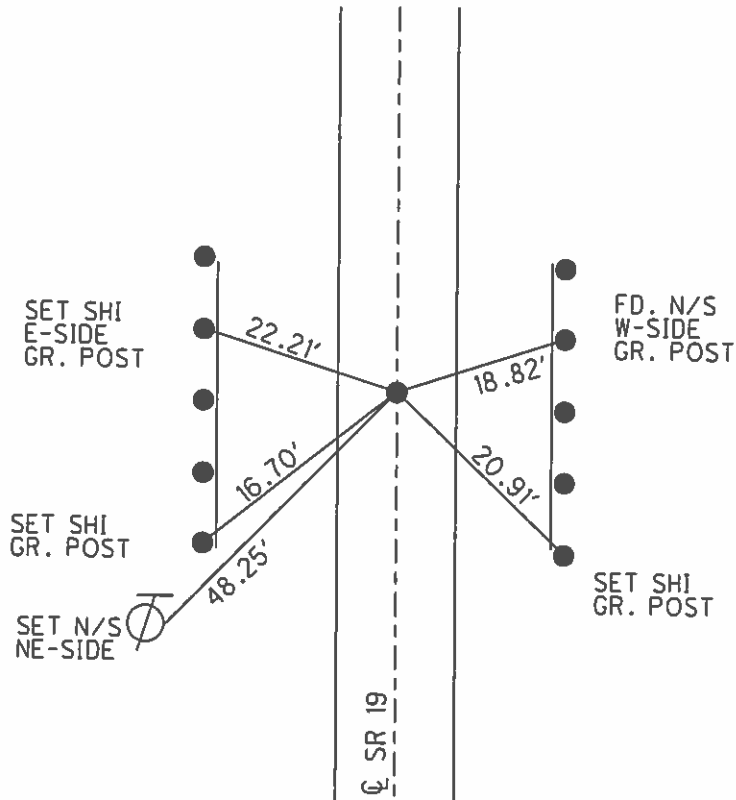
SET PK/WASHER
 09-28-92, JLR

FD. PK/WASHER
 12-23-13, TMR

GPS, REF37
 1-10-14, EBW

GPS, REF37
 8-24-15

SET MAG/WASHER
 GPS, NEWREF37
 7-22-16, JFO

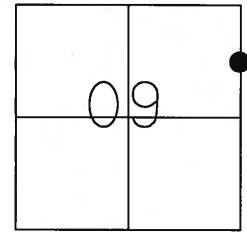


DRIVEWAY #4291

O.D.O.T. DISTRICT 2 SURVEY OFFICE (USE ONLY)

PERSONNEL	REFERENCE NO. <u>37</u>	SHEET <u>54</u> OF <u> </u>
NOTES <u>CANTERBURY</u>	DATE <u>05-29-07</u>	ROUTE <u>SR 19</u>
H.C. <u>ROUSOS</u>	WEATHER <u>FAIR</u>	COUNTY <u>SENECA</u>
R.C. <u>MOSE</u>	TEMP. <u>+80°</u>	TOWNSHIP <u>BLOOM</u>
		SECTION <u>16</u>
		T <u>1</u> N R <u>16</u> E

TYPE MONUMENT FD. PK/WASHER
 ON SURFACE - ~~BELOW~~ ON SURFACE
 LEFT - ~~C PAVT~~ - RIGHT 1.0' LT.
9.0' TO LT. EDGE OF CURB
 S.L.M. 257+17 (SV54)

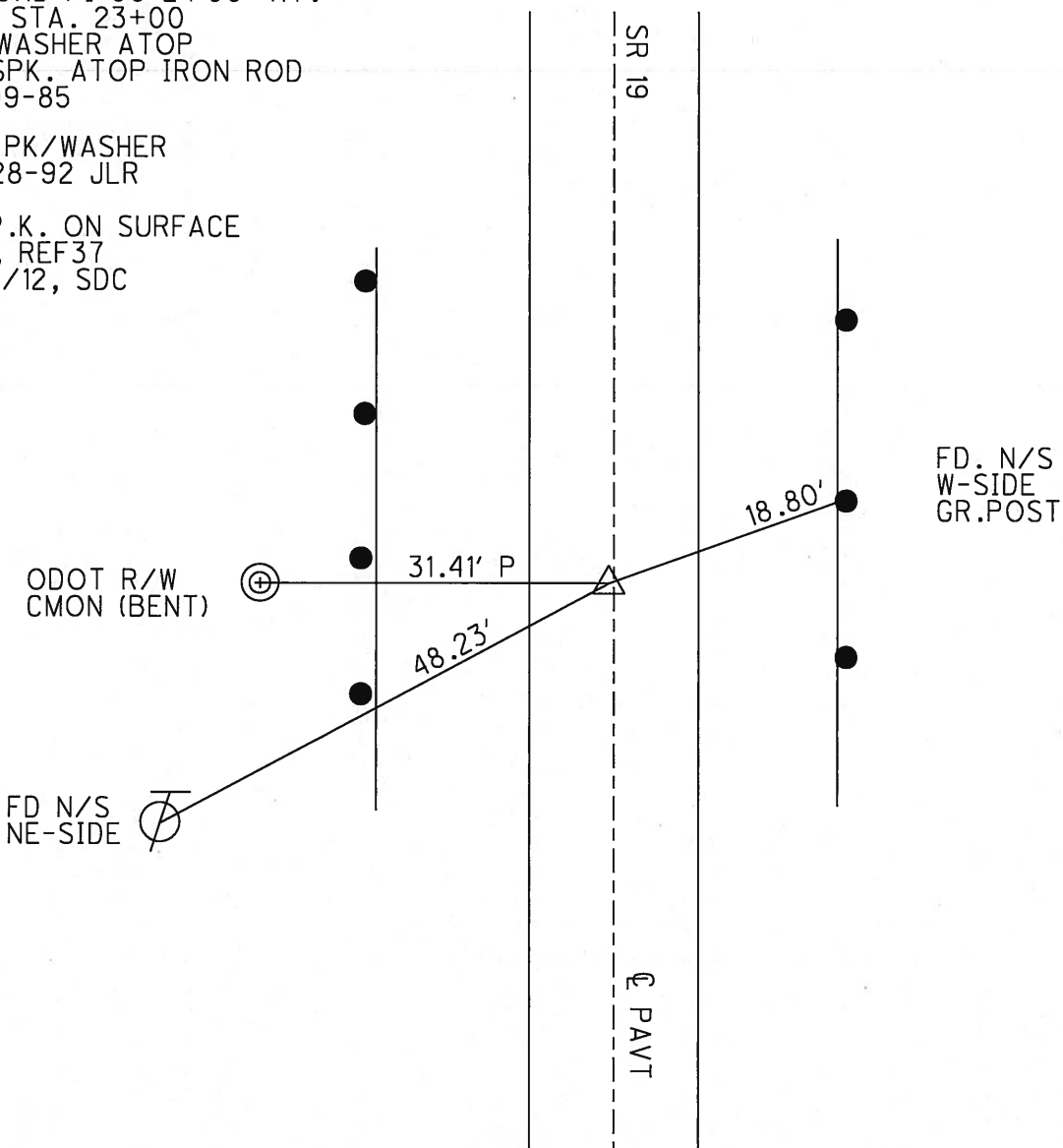


Grid: Northing: 509444.259 Easting: 1826416.184

RECORD PI 00°24'00" RT.
 OLD STA. 23+00
 PK/WASHER ATOP
 RR.SPK. ATOP IRON ROD
 10-09-85

SET PK/WASHER
 09-28-92 JLR

FD P.K. ON SURFACE
 GPS, REF37
 8/10/12, SDC



O.D.O.T. DISTRICT 2 SURVEY OFFICE

PERSONNEL

REFERENCE NO. 37

SHEET 47 OF 53

NOTES Cheney

H.C. RIPPLE

R.C. BARBOUR

Geyman

DATE 6-23-1992

WEATHER CLOUDY

TEMP. 53°

ROUTE #19

COUNTY SENECA

TOWNSHIP BLOOM

SECTION 9

T. 1 N. R. 16 E

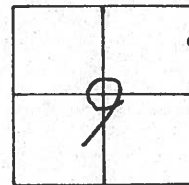
TYPE MONUMENT PK/WASHER

ON SURFACE - ~~BELOW~~ ON

LEFT - 0 PAV'T. - RIGHT 1'

9' TO LT. EDGE PAVEMENT

S.L.M. 257+10



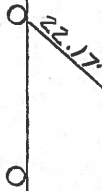
RECORD: 10-9-1985
 P.I. Δ = 00° 24' 00" RT.
 STA. 23+00
 PK/WASHER ATOP
 RR. SPK. ATOP
 IRON ROD

SET PK/WASHER
 9-28-1992
 J.L.R.

GUARD RAIL
 POST
 Fd. N₂S
 E/S

GUARD RAIL POST
 SET N₂S
 W/S

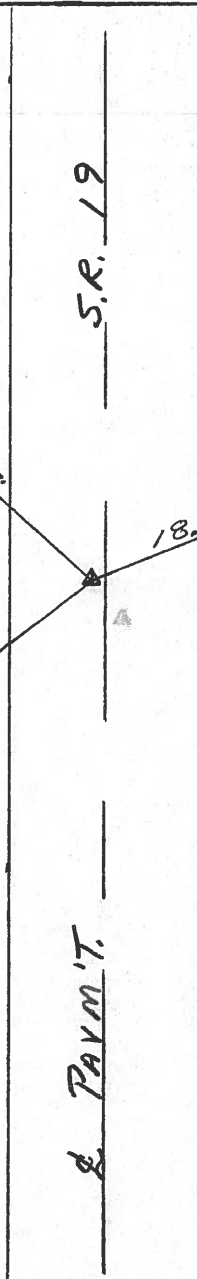
48.24'
 Fd. N₂S
 NE/S



18.609'

S.R. 19

PAV'T.



O.D.O.T. DISTRICT 2 SURVEY OFFICE

PERSONNEL

REFERENCE NO. 37

SHEET 46 OF

NOTES CROWN VAC.

DRAWN 10/23/85

H.C. RIPPLE

DATE 10/9/85

R.C. BARBOUR

WEATHER SUNNY

GEYMAN

TEMP. 66°

ROUTE #19

COUNTY SENECA

TOWNSHIP BLOOM

SECTION 9

T. 1 N R. 16 E

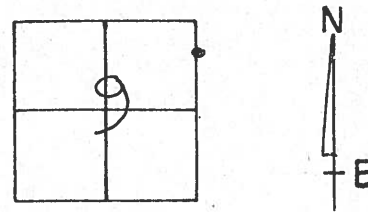
TYPE MONUMENT P.K. WASHER ATOP R.R. SPIKE

ON SURFACE - BELOW ATOP I.P.M. ON SURFACE

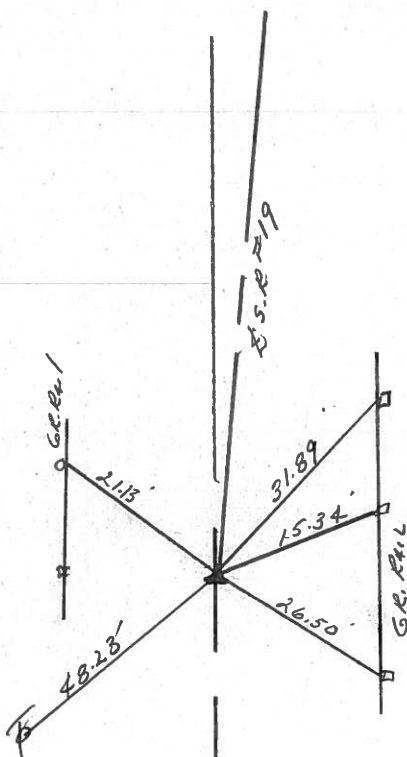
LEFT - ℄ PAV'T. - RIGHT 1' Lt. & PAVT.

TO EDGE PAVEMENT

S.L.M.

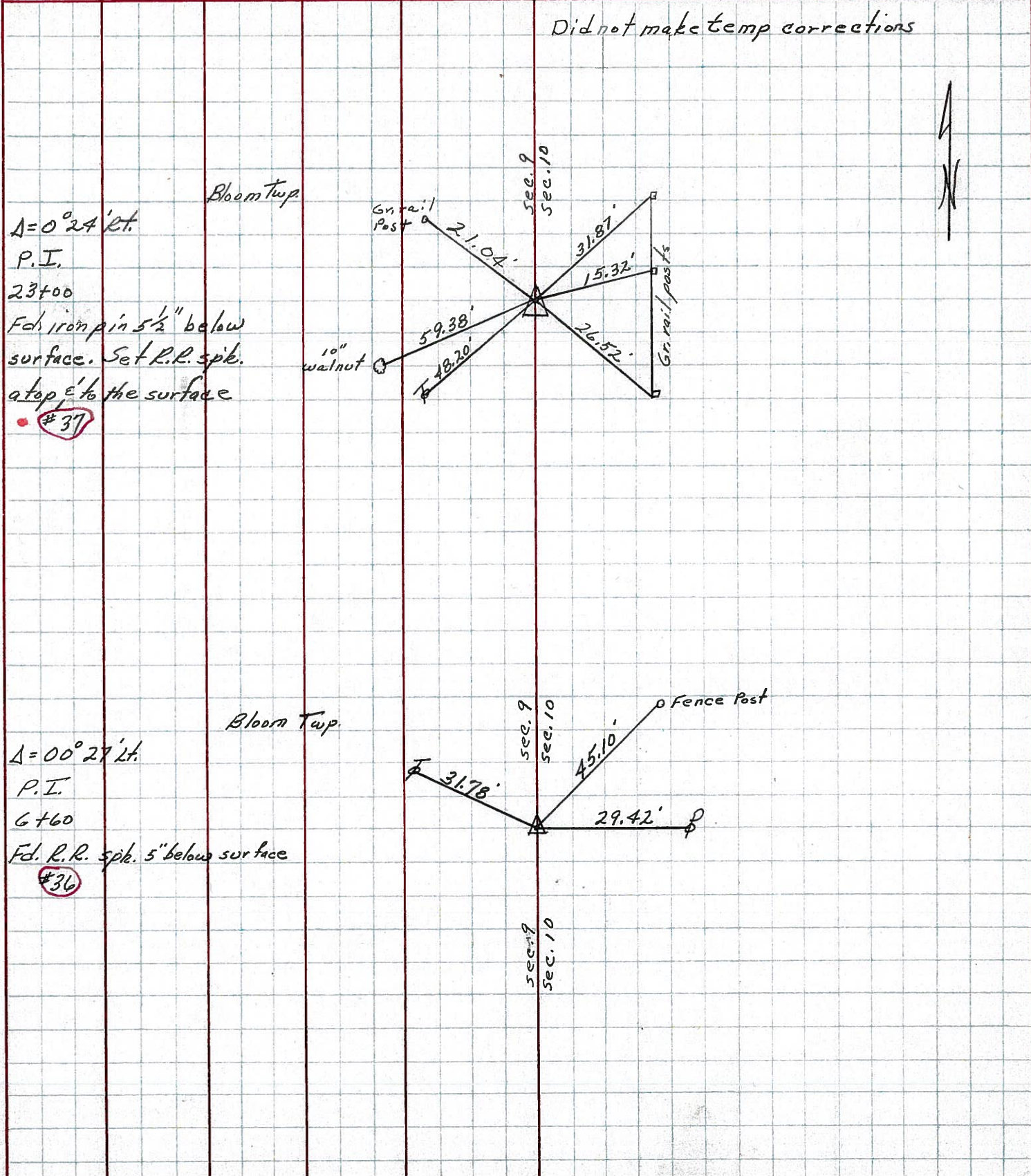


P.I.
∠ = 00° 24' 00" Rt.
23+00



PERSONNEL	TITLE	PERSONNEL	TITLE	COUNTY	DATE
Ash	-Sick leave			Seneca	3/15/72
Crenin				S. R. #19	WEATHER cloudy
Ripple				SEC. H	TEMP. 35°
Anderson					

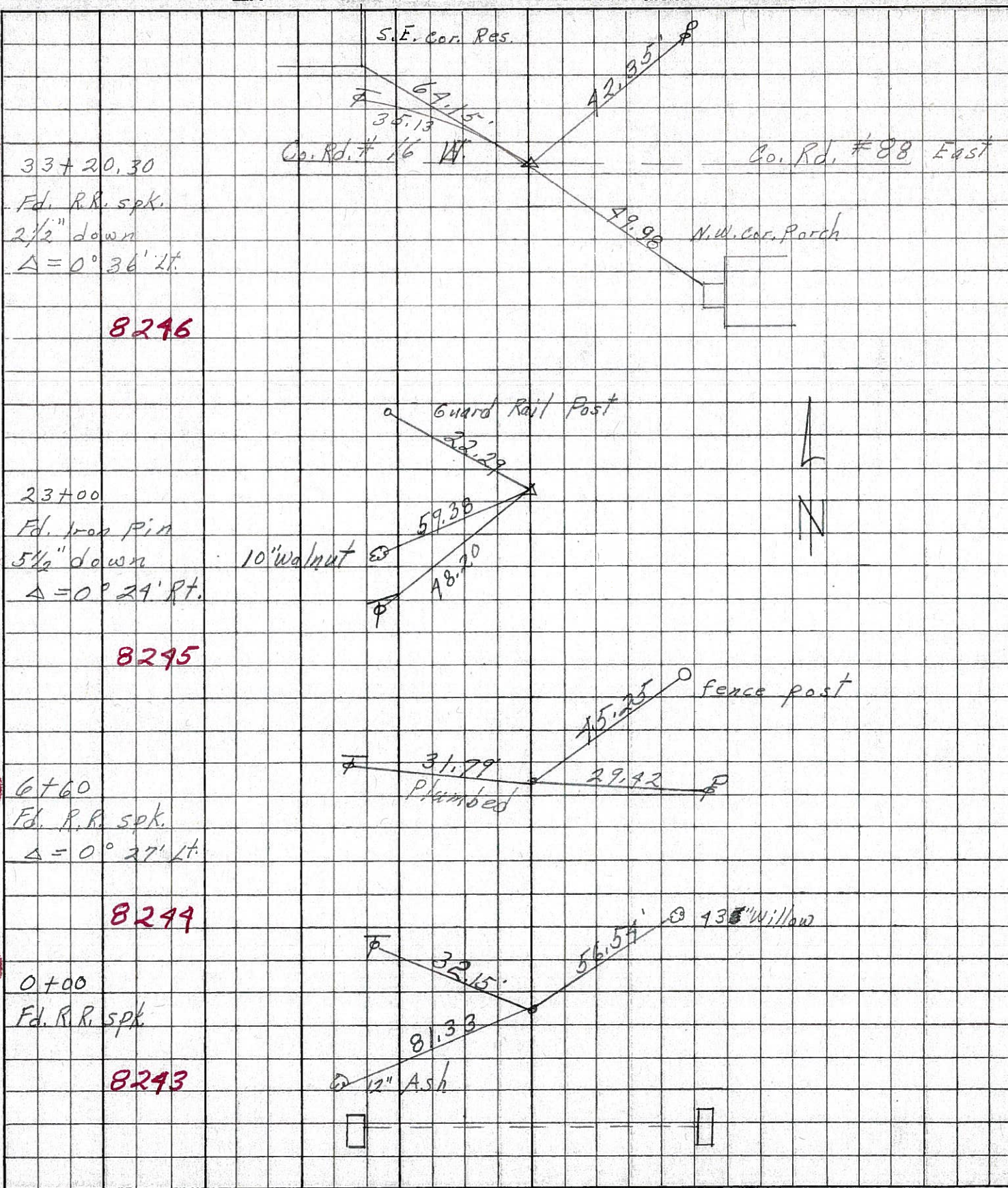
DESCRIPTION Control Point Ties - Bloomville Corp. North JOB NO. _____



PERSONNEL	TITLE	PERSONNEL	TITLE
Schneider			
Mosser			
Barbour			
Potts			

COUNTY Seneca DATE 7-28-69
 S. R. 19 WEATHER Fair
 SEC. Bloomville North TEMP. 75°

DESCRIPTION Ties for Control Points JOB NO. _____



38

33+20.30
 Fd. R.R. spk.
 2 1/2" down
 $\Delta = 0^\circ 36' Lt.$

8246

37

23+00
 Fd. Iron Pin
 5 1/2" down
 $\Delta = 0^\circ 29' Rt.$

8295

36

6+60
 Fd. R.R. spk.
 $\Delta = 0^\circ 27' Lt.$

8244

35

0+00
 Fd. R.R. spk.

8243

PERSONNEL TITLE PERSONNEL TITLE

COUNTY Seneca DATE 3/13/64

Krabill
Kowalski
Bruggeman

S. R. # 19 Bloomville WEATHER

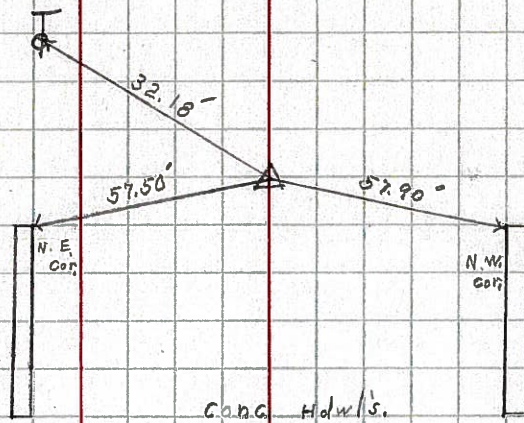
SEC. N. of Bloomville TEMP.

DESCRIPTION Control Points JOB NO.

LEFT CENTER LINE RIGHT

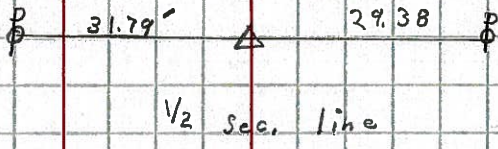
35

STA. 234 + 23.69
R.R. Spike
 $\Delta = 0^\circ - 0''$
N. Corp. line
1



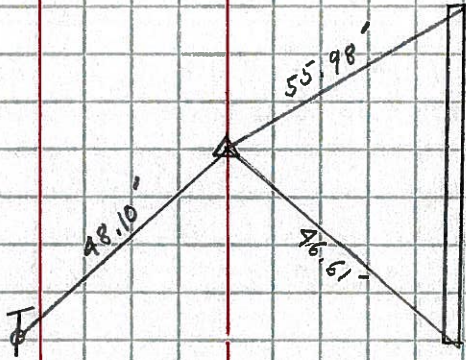
36

STA. 240 + 85.54
R.R. Spike
Sec. H # 156
 $\Delta = 0^\circ 28' Lt.$
2



37

STA. 257 + 23.90
R.R. Spike
 $\Delta = 0^\circ 29' Rt.$
(P.K.) # 3



38

STA. 267 + 41.80
R.R. Spike
 $\Delta = 0^\circ 36' Lt.$
(P.K.) # 4

