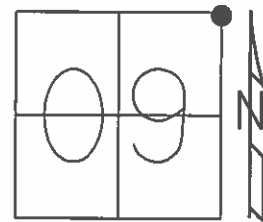


O.D.O.T. DISTRICT 2 SURVEY OFFICE (USE ONLY)

PERSONNEL _____ REFERENCE NO. 38 SHEET 56 OF 64
 NOTES RHOADES DATE 8-24-15 ROUTE SR 19
 H.C. O'DONNELL WEATHER SUNNY COUNTY SENECA
 R.C. RHOADES TEMP. 60°F TOWNSHIP BLOOM
 SECTION 9
 T 1 N R 16 E

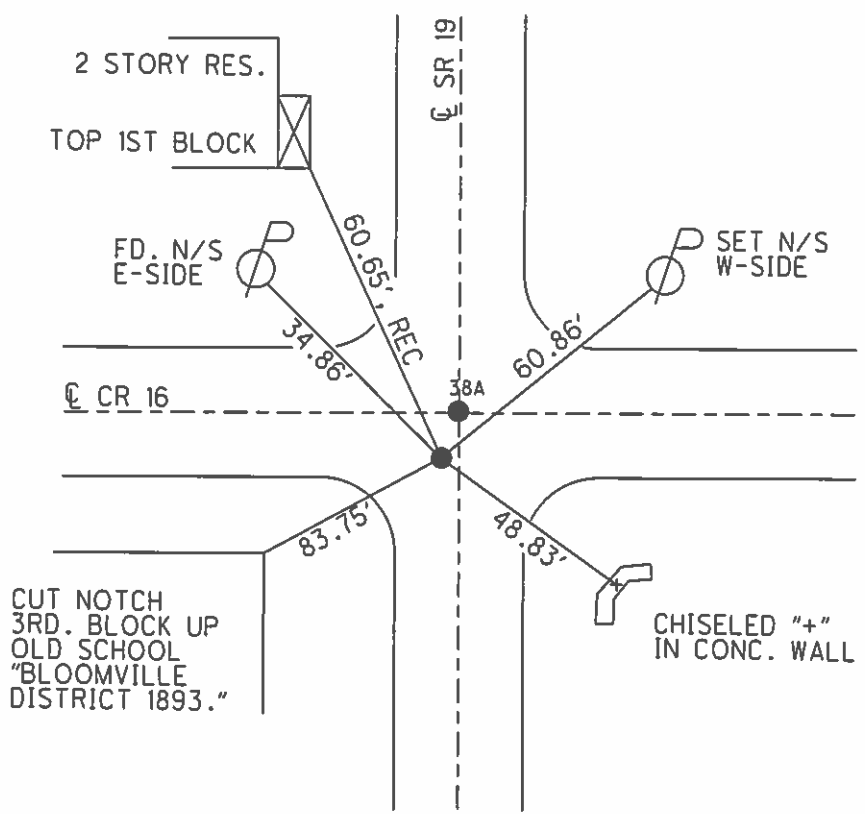
TYPE MONUMENT PK/WASHER
 ON SURFACE - BELOW ON
 LEFT - ☉ PAV'T - ~~RIGHT~~ 2.0'
8.0' TO LT. EDGE PAVEMENT
 S.L.M. 267+56.54
 Grid: Northing: 510462.5008 Easting: 1826427.1214



RECORD PI 00°36'00" LT.
 OLD STA. 33+20.30
 PK/WASHER
 ATOP RR. SPK.
 ATOP HUB
 10-09-85

NOTE: 38 TO 38A = 2.95'

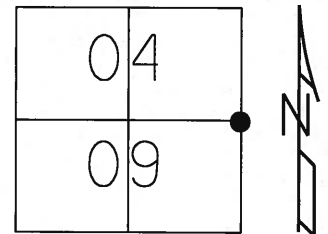
SET PK/WASHER
 09-28-92, JLR
 FD. PK/WASHER
 12-23-13, TMR
 GPS, REF38
 1-10-14, EBW
 GPS, REF38
 8-24-15
 SET MAG/WASHER
 GPS, NEWREF38
 7-22-16, JFO



O.D.O.T. DISTRICT 2 SURVEY OFFICE (USE ONLY)

PERSONNEL	REFERENCE NO. <u>38</u>	SHEET <u>55</u> OF <u> </u>
NOTES <u>CANTERBURY</u>	DATE <u>05-29-07</u>	ROUTE <u>SR 19</u>
H.C. <u>ROUSOS</u>	WEATHER <u>FAIR</u>	COUNTY <u>SENECA</u>
R.C. <u>MOSE</u>	TEMP. <u>+80°</u>	TOWNSHIP <u>BLOOM</u>
		SECTION <u>16</u>
		T <u>1</u> N R <u>16</u> E

TYPE MONUMENT FD. PK/WASHER
 ON SURFACE - ~~BELOW~~ ON SURFACE
 LEFT - ~~PAV'T~~ - RIGHT 2.0' LT.
8.0' TOLT. EDGE OF CURB
 S.L.M. 267+35

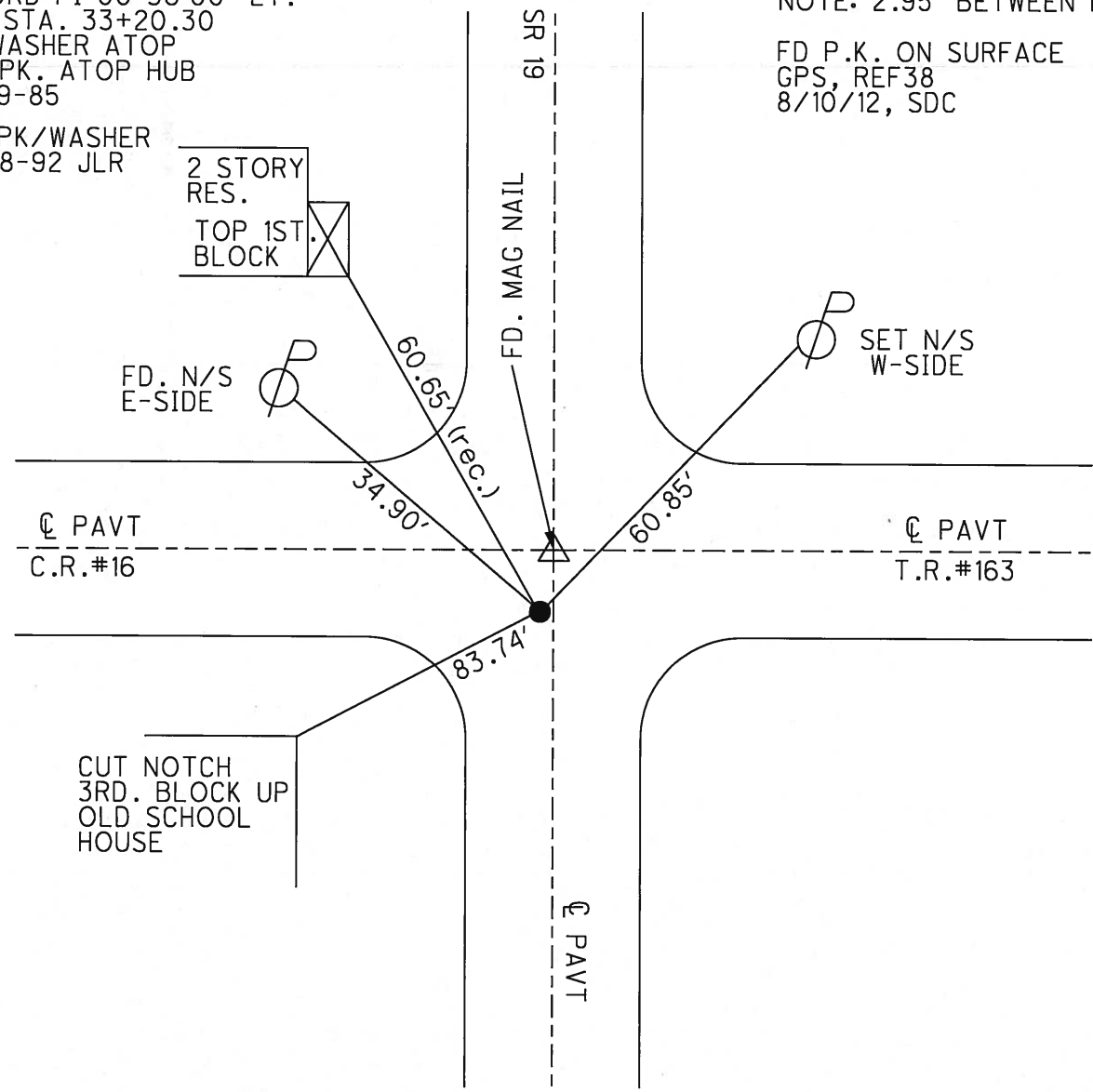


Grid: Northing: 510462.527 Easting: 1826426.940

RECORD PI 00°36'00" LT.
 OLD STA. 33+20.30
 PK/WASHER ATOP
 RR.SP.K. ATOP HUB
 10-09-85

NOTE: 2.95' BETWEEN POINTS
 FD P.K. ON SURFACE
 GPS, REF38
 8/10/12, SDC

SET PK/WASHER
 09-28-92 JLR



☉ PAVT
 C.R.#16

☉ PAVT
 T.R.#163

☉ PAVT

O.D.O.T. DISTRICT 2 SURVEY OFFICE

PERSONNEL

REFERENCE NO. 38

SHEET 48 OF 53

NOTES Cheney

H.C. Ripple

R.C. BARBOUR

Geyman

DATE 6-23-1992

WEATHER cloudy

TEMP. 62°

ROUTE #19

COUNTY SENECA

TOWNSHIP Bloom

SECTION 3, 4, 9, 10

T/L N R 16 E

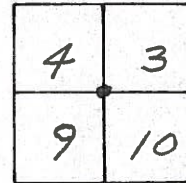
TYPE MONUMENT PK/WASHER

ON SURFACE - ~~BELOW~~ ON

LEFT- & PAVM'T. - RIGHT A'' = 2' CT.

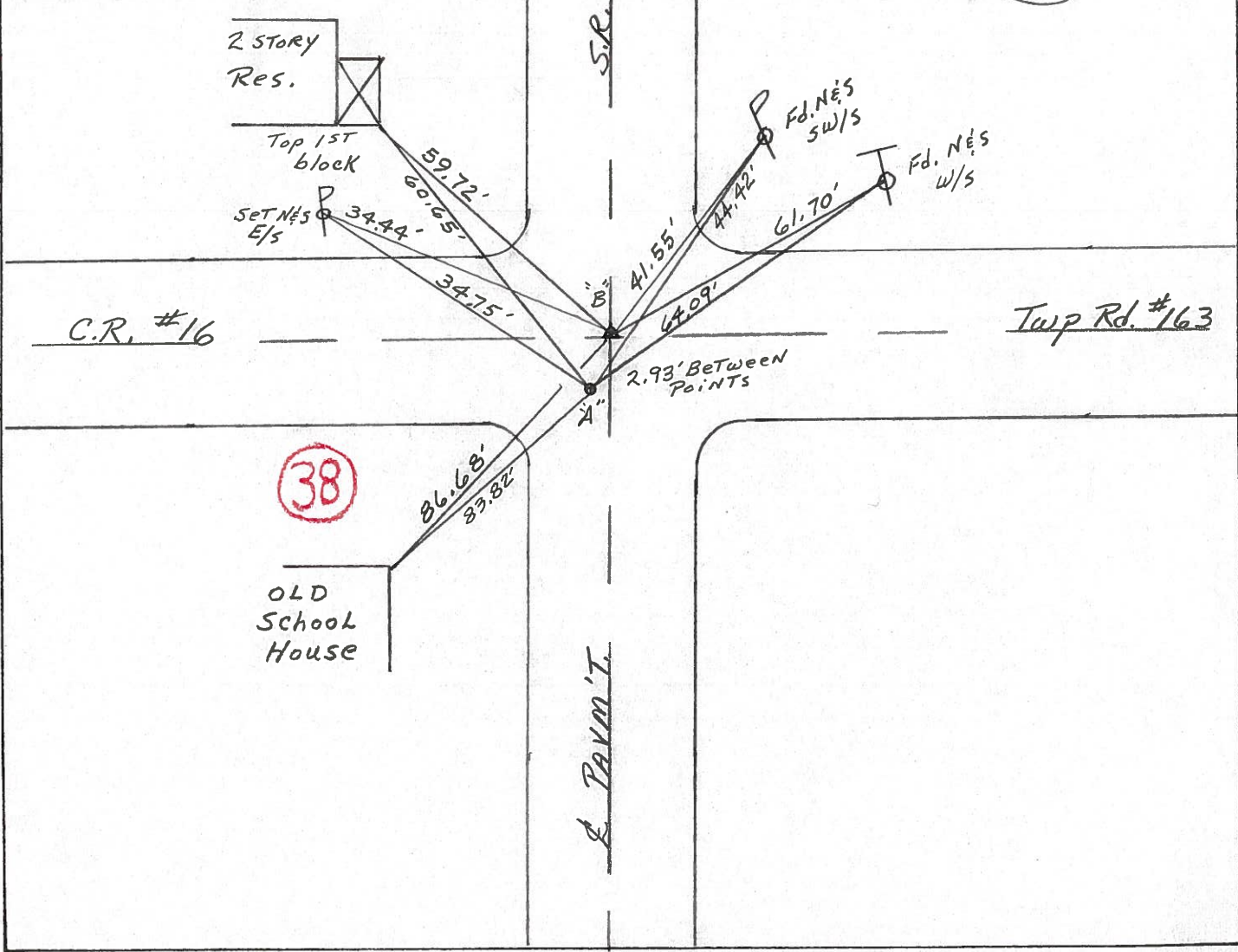
B'' = 8' LT.
B'' = 10' LT. TO SET. EDGE PAVEMENT

S.L.M. A = 267 + 29
B = 267 + 31



Record: 10-09-85
P.I. STA. 33+20.30
A = 00° 36' LT.
PK/WASHER ATOP R.R. SPK.
ATOP HUB

SET PK/WASHER
9-28-1992
J.L.R.



O.D.O.T. DISTRICT 2 SURVEY OFFICE

PERSONNEL

REFERENCE NO. 38

SHEET 47 OF

NOTES Cronin Vac.

DRAWN 10/23/85

H.C. RIPPLE

DATE 10/9/85

R.C. BARBOUR

WEATHER SUNNY

GEYMAN

TEMP. 67°

ROUTE #19

COUNTY SENECA

TOWNSHIP BLOOM

SECTION 3, 4, 9, 10

T. 1 N. R. 16 E

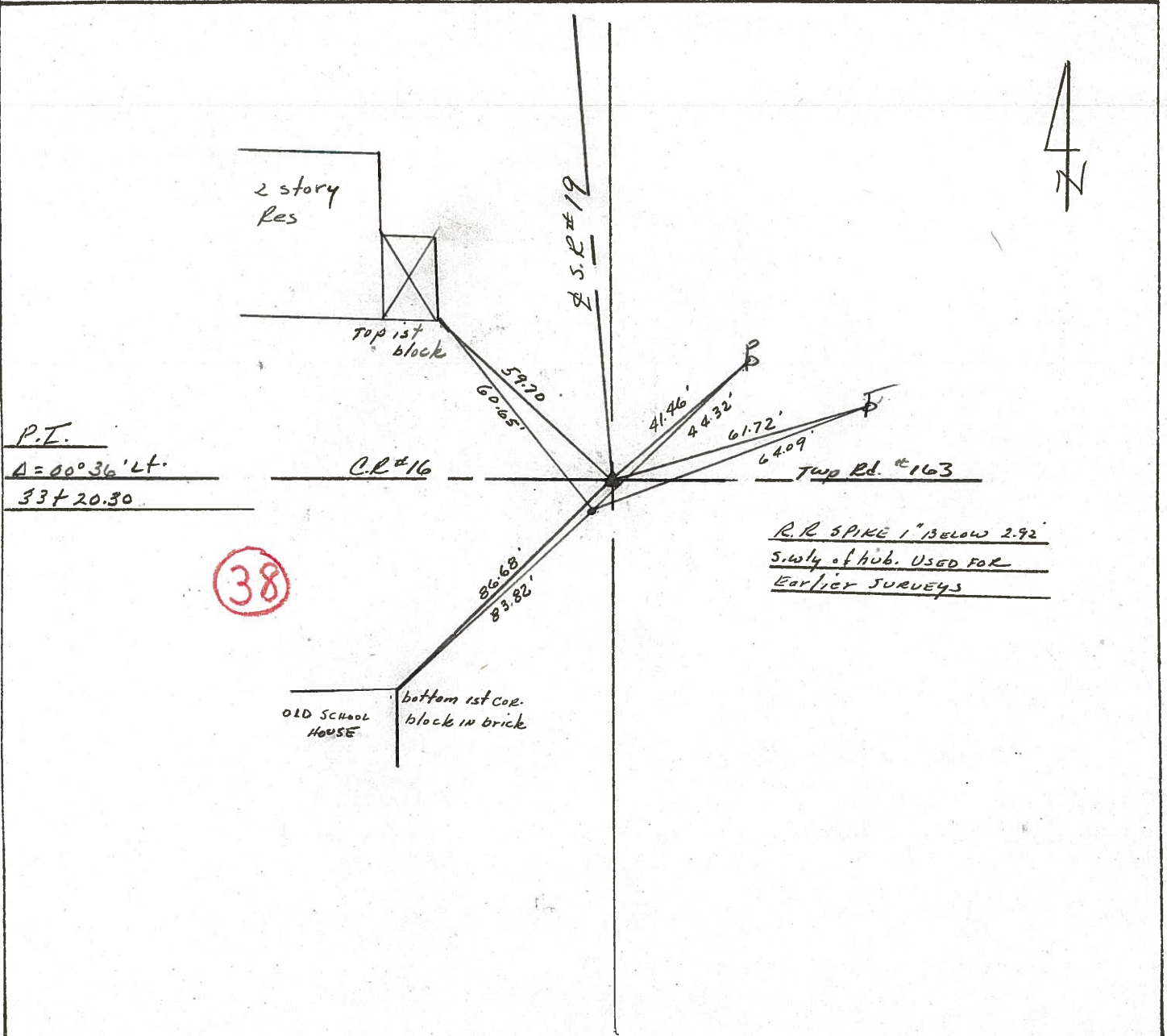
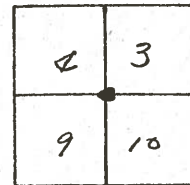
TYPE MONUMENT R.R. SPIKE ATOP HUB

ON SURFACE - BELOW 1" BELOW

LEFT - Q PAV'T. - RIGHT Q PAUT.

 TO EDGE PAVEMENT

S.L.M.



PERSONNEL TITLE PERSONNEL TITLE
 Schneider _____
 Mosser _____
 Barbour _____
 Potts _____

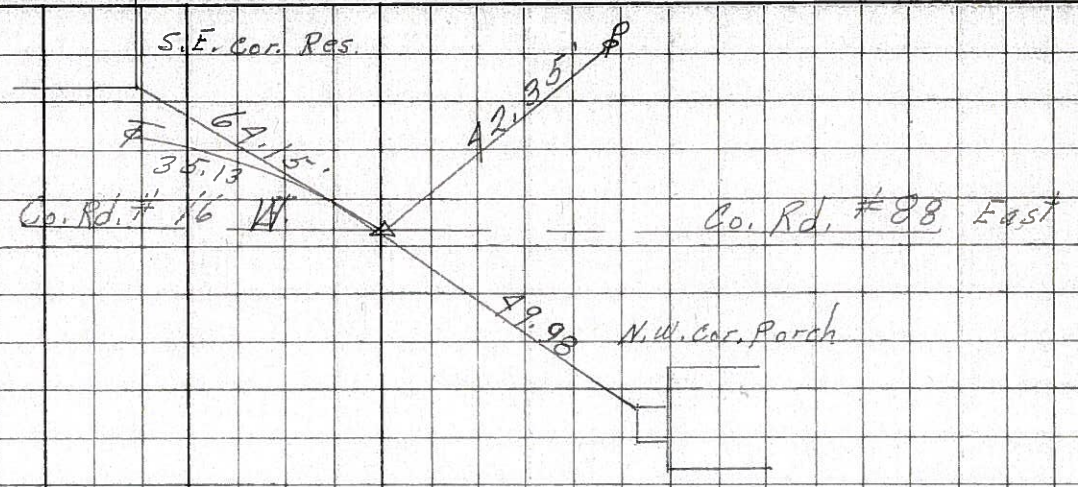
COUNTY Seneca DATE 7-28-69
 S. R. 19 WEATHER Fair
 SEC. Bloomville North TEMP. 75°

DESCRIPTION Ties for control points JOB NO. _____

38

33+20.30
 Fd. R.R. spk.
 2 1/2" down
 $\Delta = 0^\circ 36' Lt.$

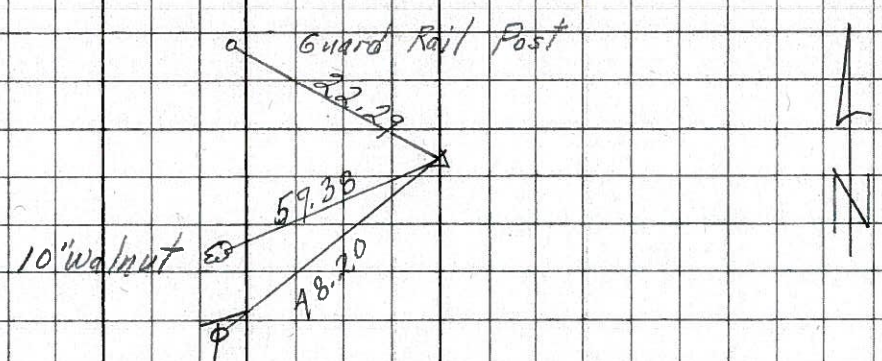
8246



37

23+00
 Fd. Iron Pin
 5 1/2" down
 $\Delta = 0^\circ 24' Rt.$

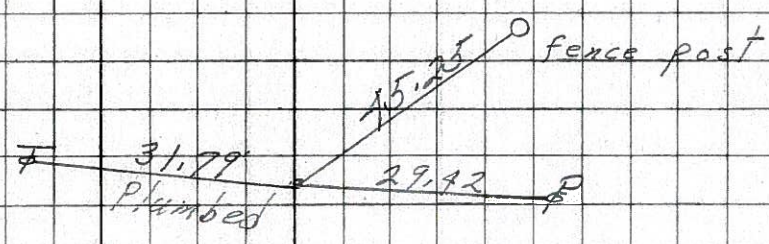
8245



36

6+60
 Fd. R.R. spk.
 $\Delta = 0^\circ 27' Lt.$

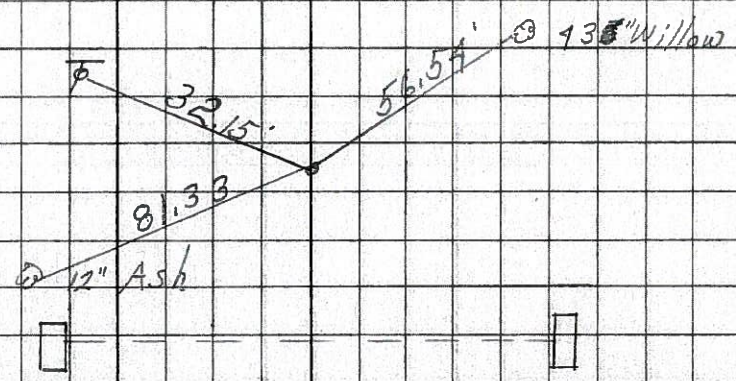
8244



35

0+00
 Fd. R.R. spk.

8243



PERSONNEL TITLE PERSONNEL TITLE

COUNTY Seneca DATE 3/13/64

Krabill
Kowalski
Bruggeman

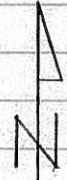
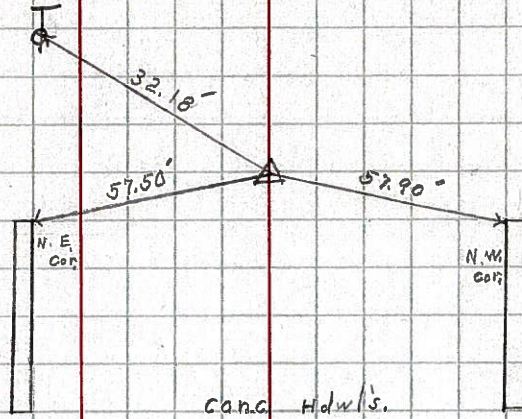
S. R. # 19 Bloomville WEATHER

SEC. N. of Bloomville TEMP.

DESCRIPTION Control Points LEFT CENTER LINE RIGHT JOB NO.

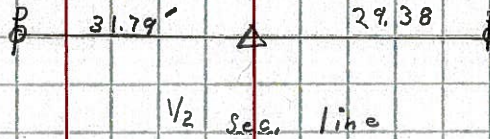
35

STA. 234 + 23.69
R.R. Spike
 $\Delta = 0^\circ - 0''$
N. Corp. line
1



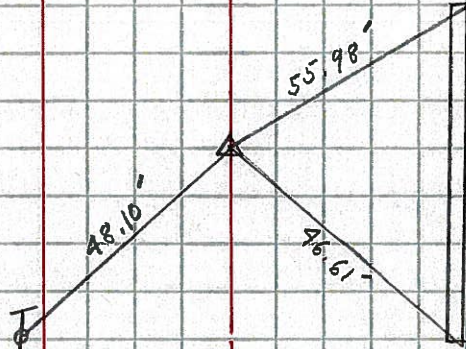
36

STA. 240 + 85.54
R.R. Spike
Sea. H = 156
 $\Delta = 0^\circ 28' Lt.$
2



37

STA. 257 + 23.90
R.R. Spike
 $\Delta = 0^\circ 29' Rt.$
(P.K.) # 3



38

STA. 267 + 41.80
R.R. Spike
 $\Delta = 0^\circ 36' Lt.$
(P.K.) # 4

