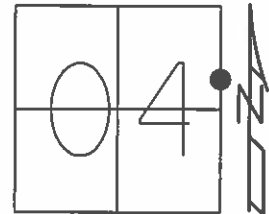


O.D.O.T. DISTRICT 2 SURVEY OFFICE (USE ONLY)

PERSONNEL _____ REFERENCE NO. 40 SHEET 59 OF 64
 NOTES RHOADES DATE 8-24-15 ROUTE SR 19
 H.C. O'DONNELL WEATHER SUNNY COUNTY SENECA
 R.C. RHOADES TEMP. 60°F TOWNSHIP BLOOM
 _____ SECTION 4
 _____ T 1 N R 16 E

TYPE MONUMENT PK/WASHER
 ON SURFACE - ~~BELOW~~ ON _____
 LEFT - ☉ PAV'T - ~~RIGHT~~ 1.5'
8.5' TO LT. EDGE PAVEMENT
 S.L.M. 295+40.62



Grid: Northing: 513243.8956 Easting: 1826434.5588

RECORD PI 00°38'00" RT.
 OLD STA. 61+00
 US #224 RELOC. POINT
 PK/WASHER
 ATOP RR. SPK.
 10-09-85

NOTE: 40 TO 40A= 10.34'

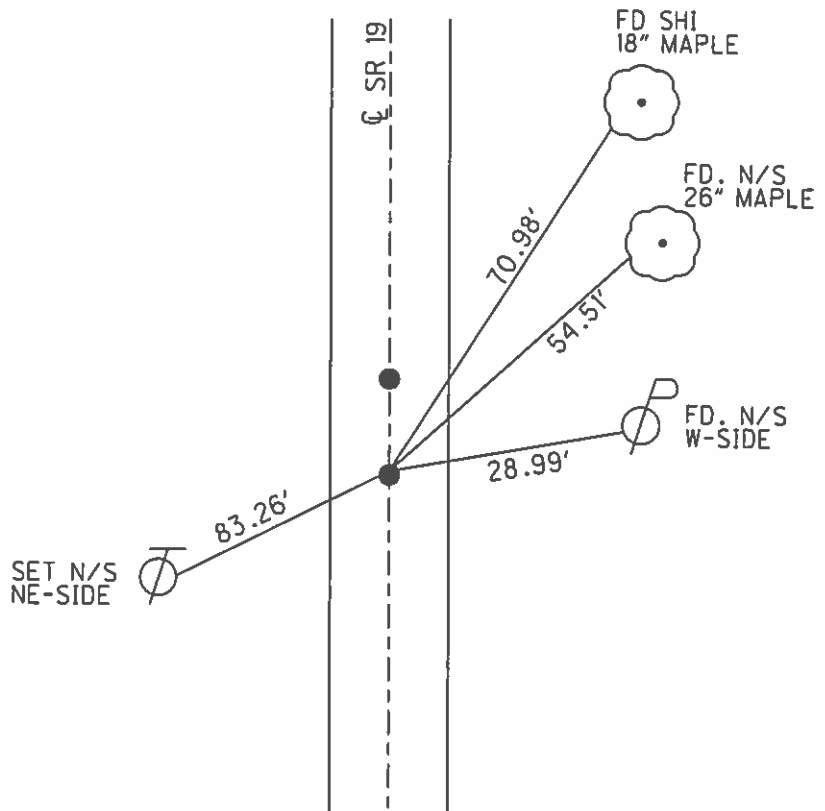
SET PK/WASHER
 09-28-92, JLR

FD. PK/WASHER
 12-23-13, TMR

GPS, REF40
 1-22-14

GPS, REF40
 8-24-15

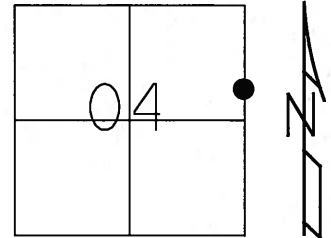
SET MAG/WASHER
 GPS, NEWREF40
 7-25-16



O.D.O.T. DISTRICT 2 SURVEY OFFICE (USE ONLY)

PERSONNEL _____ REFERENCE NO. 40 SHEET 58 OF 62
 NOTES CANTERBURY DATE 05-29-07 ROUTE SR 19
 H.C. ROUSOS WEATHER FAIR COUNTY SENECA
 R.C. MOSER TEMP. +80° TOWNSHIP BLOOM
 _____ SECTION 16
 _____ T 1 N R 16 E

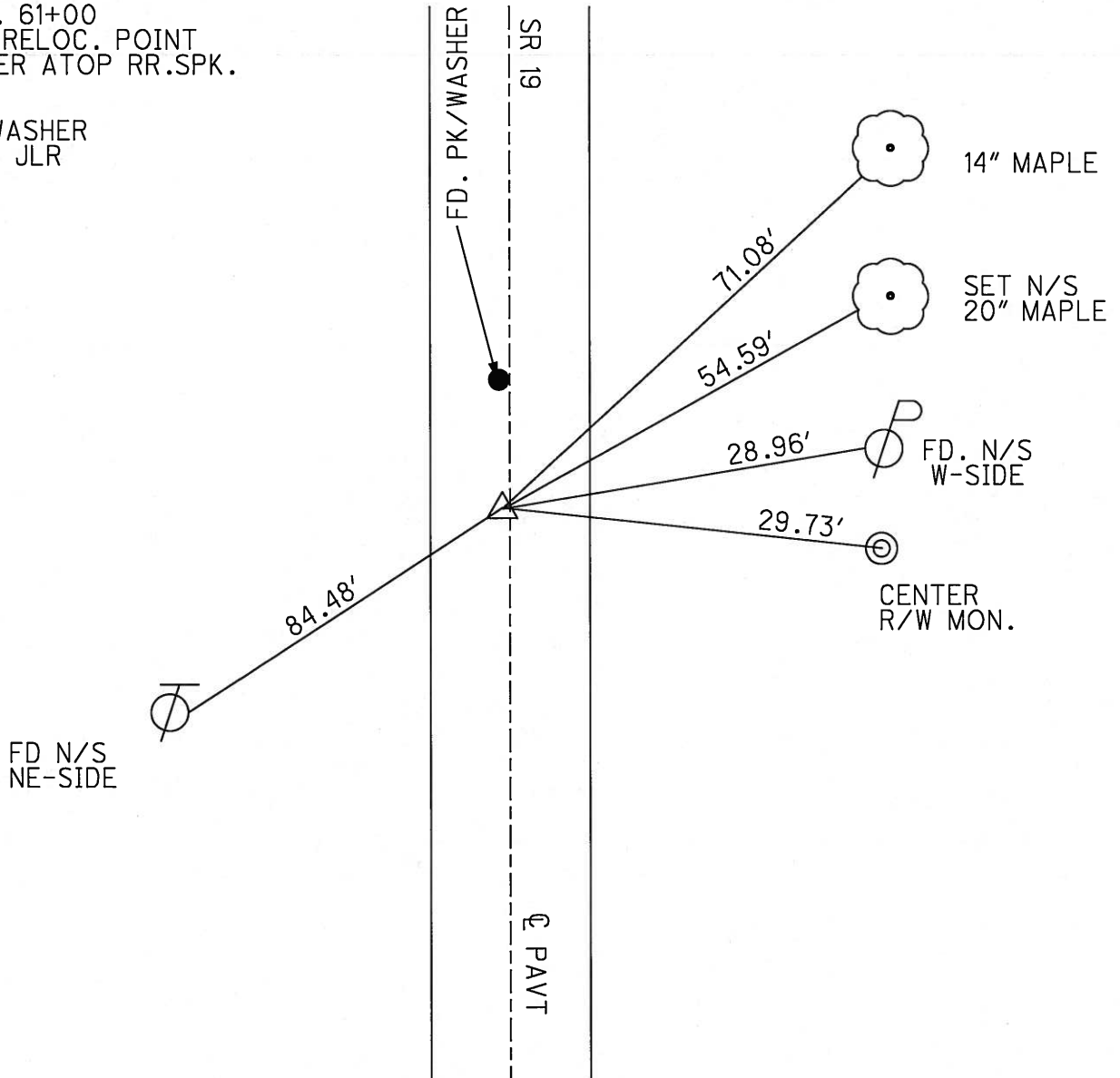
TYPE MONUMENT FD. PK/WASHER
 ON SURFACE - ~~BELOW~~ ON SURFACE
 LEFT - ~~C PAV'T~~ = ~~RIGHT~~ 1.5' LT.
8.5' TO LT. EDGE OF CURB
 S.L.M. 295+17
 Grid: Northing: _____ Easting: _____



RECORD PI 00°38'00" RT.
 OLD STA. 61+00
 US #224 RELOC. POINT
 PK/WASHER ATOP RR.SPK.
 10-09-85

NOTE: 10.33' BETWEEN POINTS

SET PK/WASHER
 09-28-92 JLR



FD N/S
 NE-SIDE

14" MAPLE

SET N/S
 20" MAPLE

FD. N/S
 W-SIDE

CENTER
 R/W MON.

O.D.O.T. DISTRICT 2 SURVEY OFFICE

PERSONNEL

REFERENCE NO. 40

SHEET 50 OF 53

NOTES Cheney

H.C. RIPPLE

R.C. BARBOUR

Geyman

DATE 6-23-1992

WEATHER CLOUDY

TEMP. 62°

ROUTE #19

COUNTY SENECA

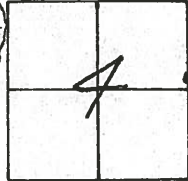
TOWNSHIP Bloom

SECTION 4

T. 1 N. R 16 E

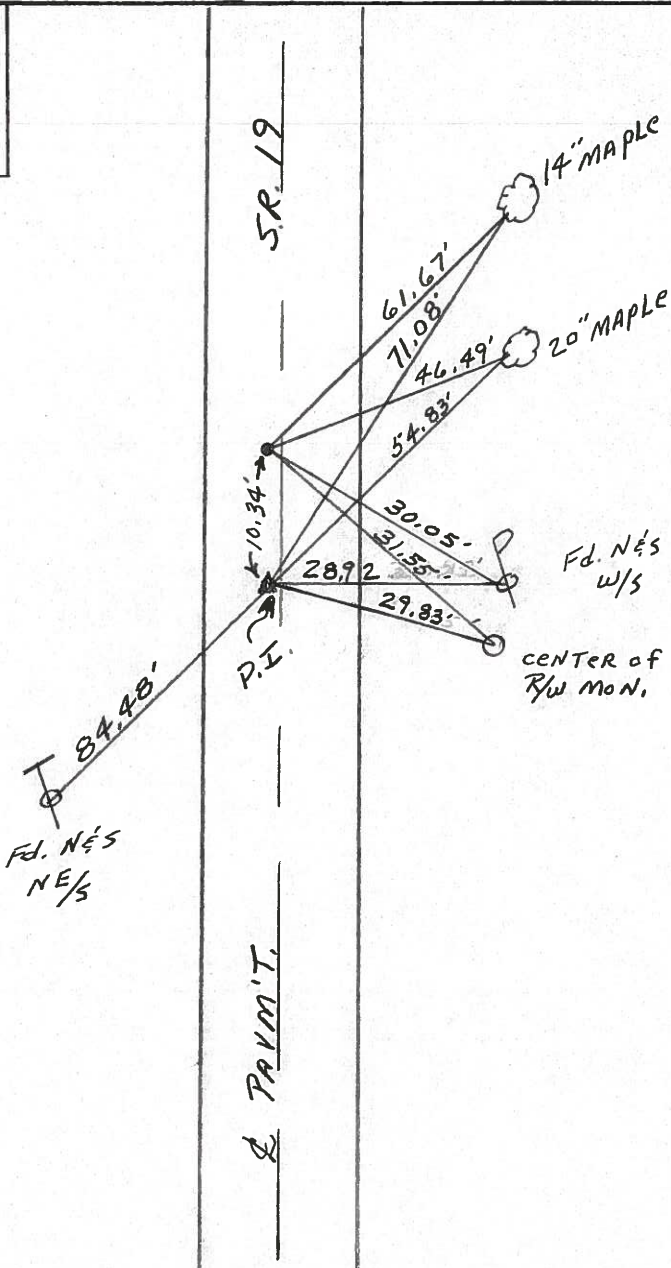
TYPE MONUMENT PK / WASHER
 ON SURFACE - BELOW ON
 LEFT - LT. PAV'T. - RIGHT 1.5'
8.5 TO LT. EDGE PAVEMENT
 S.L.M. ^{PI.} 295+10

SET PK/WASHER
 9-28-1992
 J.L.R.



Record: 10-09-85
 P.I. Δ = 00° 38' 00" RT.
 STA. 61+00
 US #224 Reloc. Point
 PK. & washer ATOP R.R. SPK.

40



O.D.O.T. DISTRICT 2 SURVEY OFFICE

PERSONNEL

REFERENCE NO. 40

SHEET 49 OF _____

NOTES CROWN Vac.

DRAWN 10/23/85

H.C. RIPPLE

DATE 10/9/85

R.C. BARBOUR

WEATHER SUNNY

GEYMAN

TEMP. 70°

ROUTE #19

COUNTY SENECA

TOWNSHIP BLOOM

SECTION 4

T. 1 N. R. 16 E.

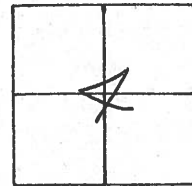
TYPE MONUMENT P.K. WASHER AT DP 2 R.R.

ON SURFACE - BELOW SPIKES ON SURFACE

LEFT - PAV'T. - RIGHT PAV'T.

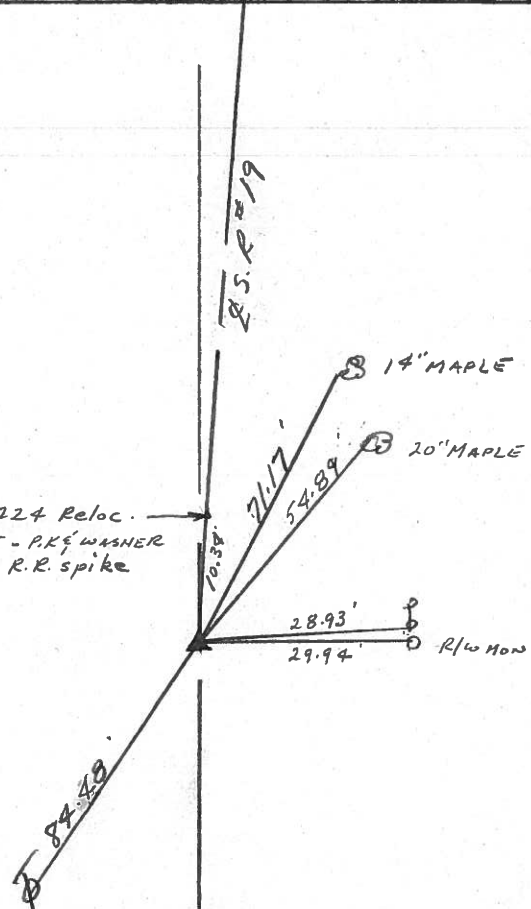
TO EDGE PAVEMENT

S.L.M. _____



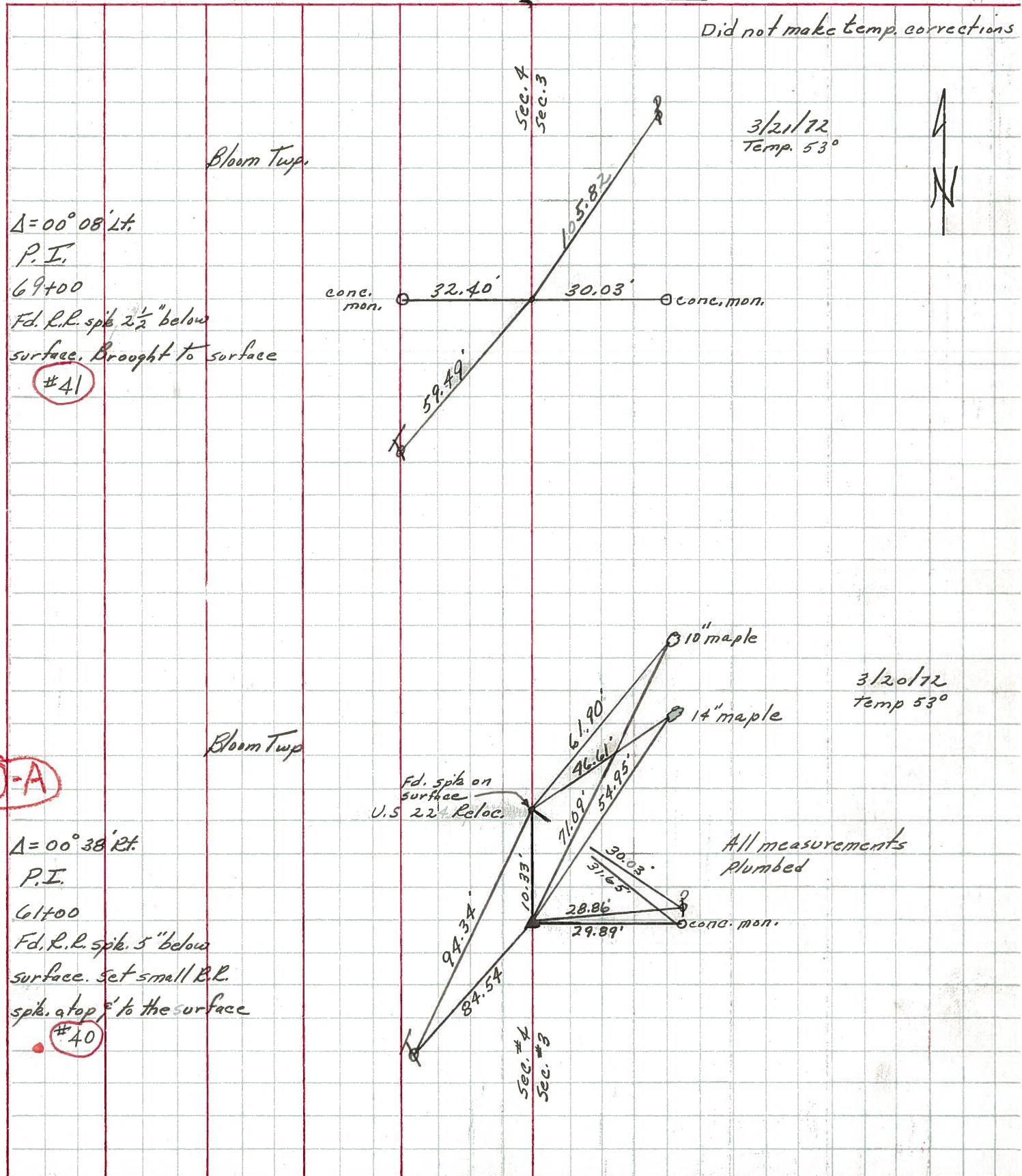
P.I.
A = 00°38'00" Rt.
61+00

U.S. #224 Reloc.
POINT - P.K. WASHER
AT DP R.R. SPIKE



PERSONNEL TITLE PERSONNEL TITLE COUNTY Seneca DATE 4/7/72 (drawn)
Ash _____
Cronin _____ S. R. #19 WEATHER SUNNY
Ripple _____ SEC. H TEMP. 53°
Anderson _____

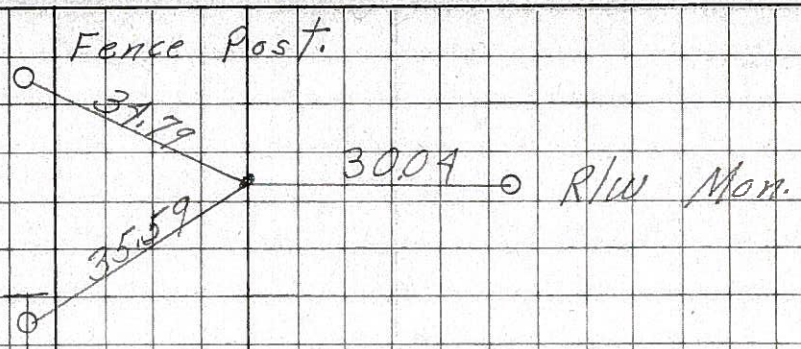
DESCRIPTION Ties for Control Points - Bloomville North JOB NO. _____



PERSONNEL TITLE PERSONNEL TITLE COUNTY Seneca DATE 7-28-69
Schneider _____ Mosser _____ S. R. 19 WEATHER Fair
Barbour _____ Potts _____ SEC. Bloomville North TEMP. 75°
 DESCRIPTION Ties for Control Points JOB NO. _____

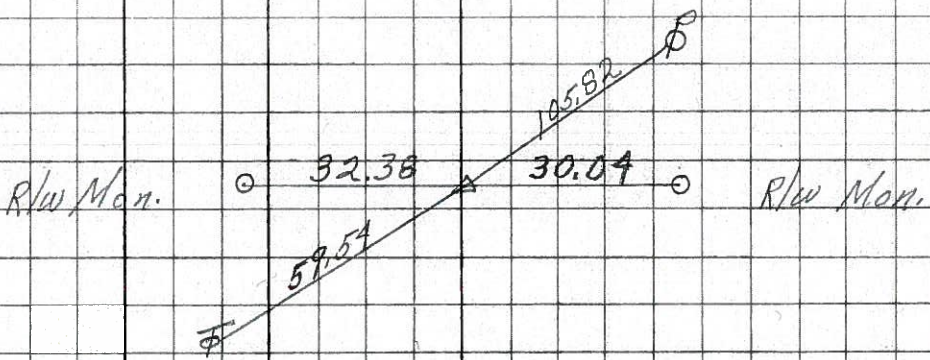
42

P.O.T.
80+00
Fd. R.R. spk.
2 1/2" down
8250



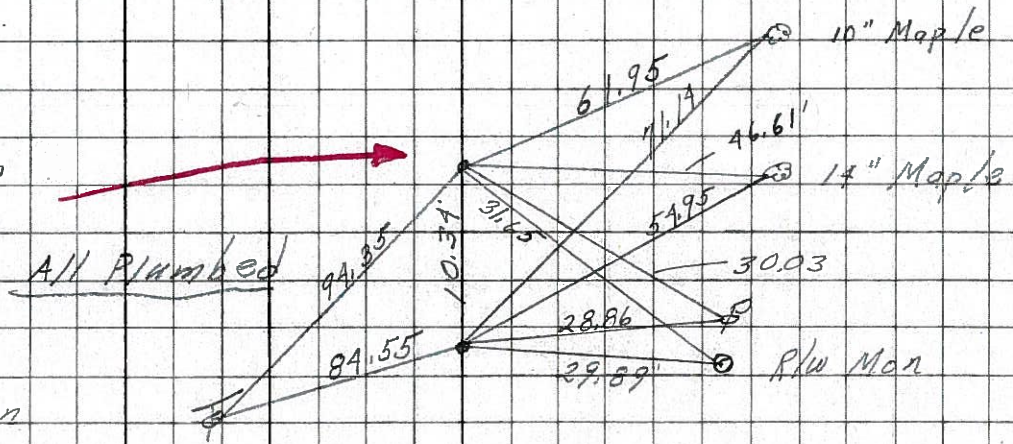
41

69+00
R.R. spk.
2 1/2" down
 $\Delta = 0^\circ 08' 17''$
8249



40-A

1163+83 = 49+00
US. 224 Reloc
8248

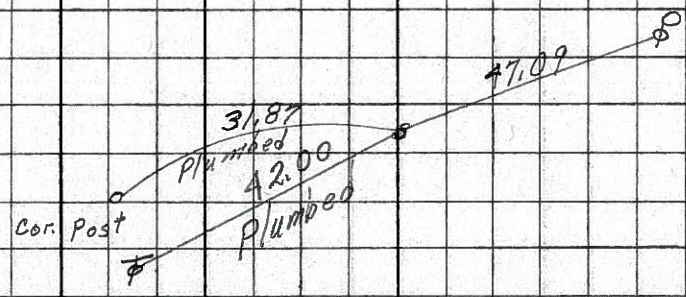


40

61+00
Fd. R.R. spk. 5" down
 $\Delta = 0^\circ 38' 17''$
8248

39

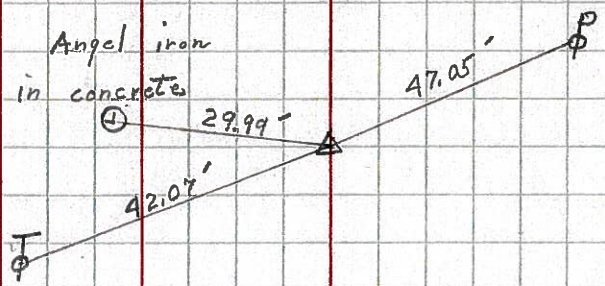
48+00
Fd. R.R. spk.
2 1/2" down
 $\Delta = 0^\circ 0'$
8247



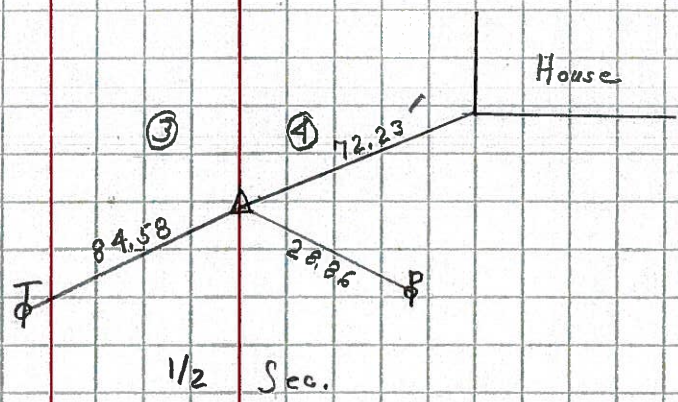
PERSONNEL	TITLE	PERSONNEL	TITLE	COUNTY	DATE
Krabill				Seneca	3/13/64
Kowaleski				S. R. # 19 N. of Bloomville	WEATHER
Bruggeman				SEC.	TEMP.

DESCRIPTION	Control	PTS.	LEFT	CENTER LINE	RIGHT	JOB NO.
-------------	---------	------	------	-------------	-------	---------

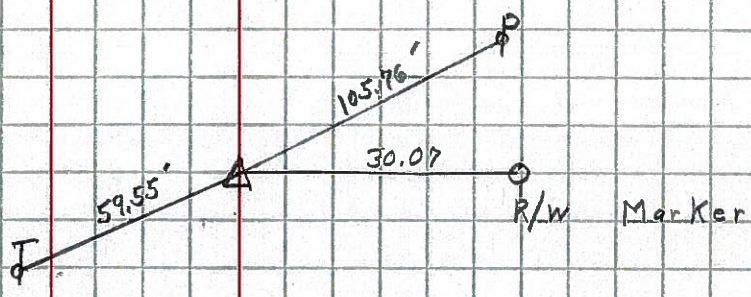
39 STA. 282 + 26.10
 R.R. Spike
 $\Delta = 0^{\circ} 0'$
 (P.K.) # 5



40 STA. 295 + 24.10
 R.R. Spike
 $\Delta = 0^{\circ} 38'$ RT.
 (P.K.) # 6



41 STA. 303 + 23.20
 R.R. Spike
 $\Delta = 0^{\circ} 08'$ Lt.
 (P.K.) # 7



42 STA. 314 + 24.86
 R.R. Spike
 $\Delta = 0^{\circ} 0'$
 P.K. # 8

