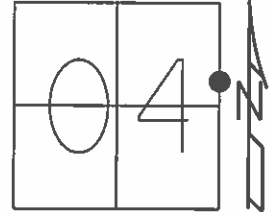


O.D.O.T. DISTRICT 2 SURVEY OFFICE (USE ONLY)

PERSONNEL _____ REFERENCE NO. 40A SHEET 60 OF 64
 NOTES RHOADES DATE 8-24-15 ROUTE SR 19
 H.C. O'DONNELL WEATHER SUNNY COUNTY SENECA
 R.C. RHOADES TEMP. 60°F TOWNSHIP BLOOM
 _____ SECTION 04
 _____ T 1 N R 16 E

TYPE MONUMENT PK/WASHER
 ON SURFACE - BELOW ON
 LEFT - ☉ PAV'T - RIGHT 1.5'
8.5' TO LT. EDGE PAVEMENT
 S.L.M. 295+50.94
 Grid: Northing: 513254.2216 Easting: 1826434.7867



SET PK/WASHER
09-28-92, JLR

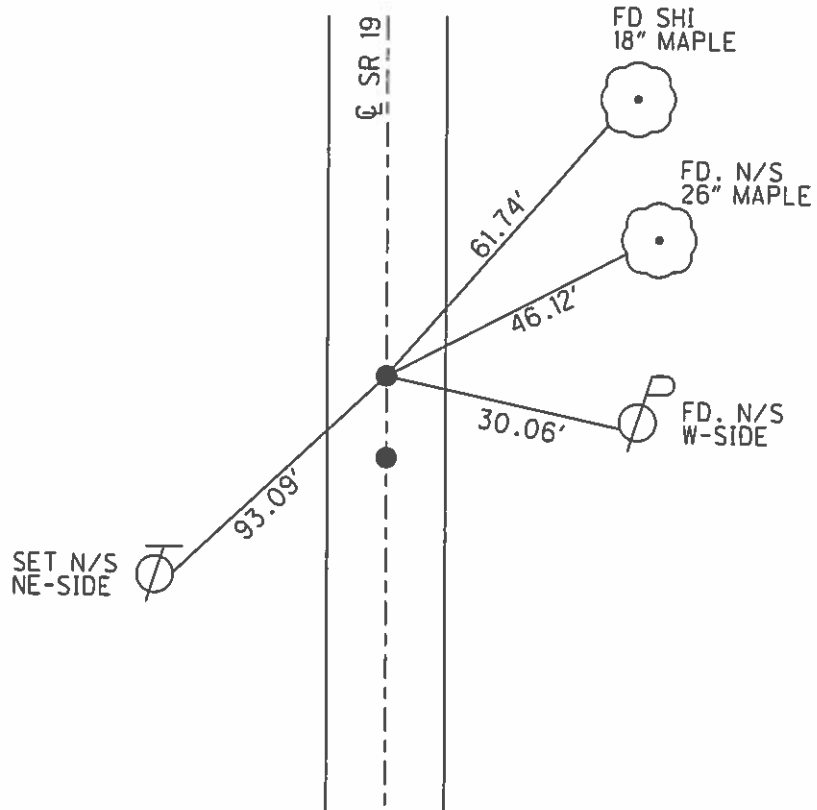
FD. PK/WASHER
12-23-13, TMR

GPS, REFA40
1-22-14

GPS, REFA40
8-24-15

SET MAG/WASHER
GPS, NEWREFA40
7-25-16, JFO

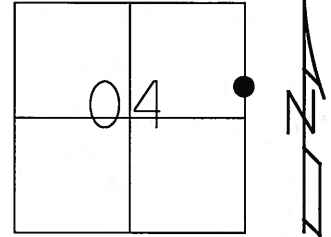
NOTE: 40 TO 40A= 10.34'



O.D.O.T. DISTRICT 2 SURVEY OFFICE (USE ONLY)

PERSONNEL _____ REFERENCE NO. 40A SHEET 59 OF 62
 NOTES CANTERBURY DATE 05-29-07 ROUTE SR 19
 H.C. ROUSOS WEATHER FAIR COUNTY SENECA
 R.C. MOSE TEMP. +80° TOWNSHIP BLOOM
 _____ SECTION 16
 _____ T 1 N R 16 E

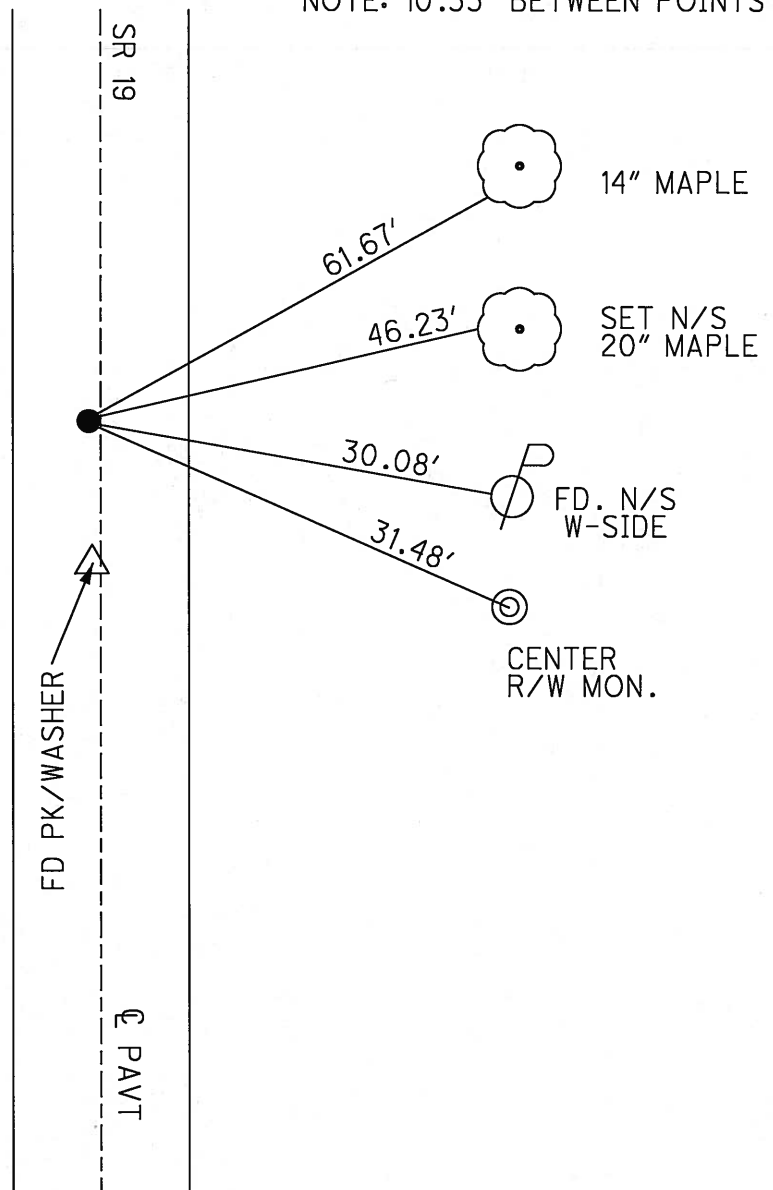
TYPE MONUMENT FD. PK/WASHER
 ON SURFACE - ~~BELOW~~ ON SURFACE
 LEFT - ~~C PAV'T~~ - RIGHT 1.5' LT.
8.5' TO LT. EDGE OF CURB
 S.L.M. 295+27



Grid: Northing: _____ Easting: _____

SET PK/WASHER
09-28-92 JLR

NOTE: 10.33' BETWEEN POINTS



O.D.O.T. DISTRICT 2 SURVEY OFFICE

PERSONNEL

REFERENCE NO. 40

SHEET 50 OF 53

NOTES Cheney

H.C. RIPPLE

DATE 6-23-1992

ROUTE #19

R.C. BARBOUR

WEATHER CLOUDY

COUNTY SENECA

Geyman

TEMP. 62°

TOWNSHIP Bloom

SECTION 4

T.L.N.R. 16 E

TYPE MONUMENT PK/WASHER

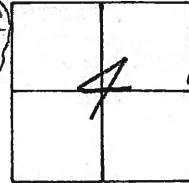
ON SURFACE - BELOW ON

LEFT- & PAV'T. - RIGHT 1.5'

8.5 TO LT. EDGE PAVEMENT

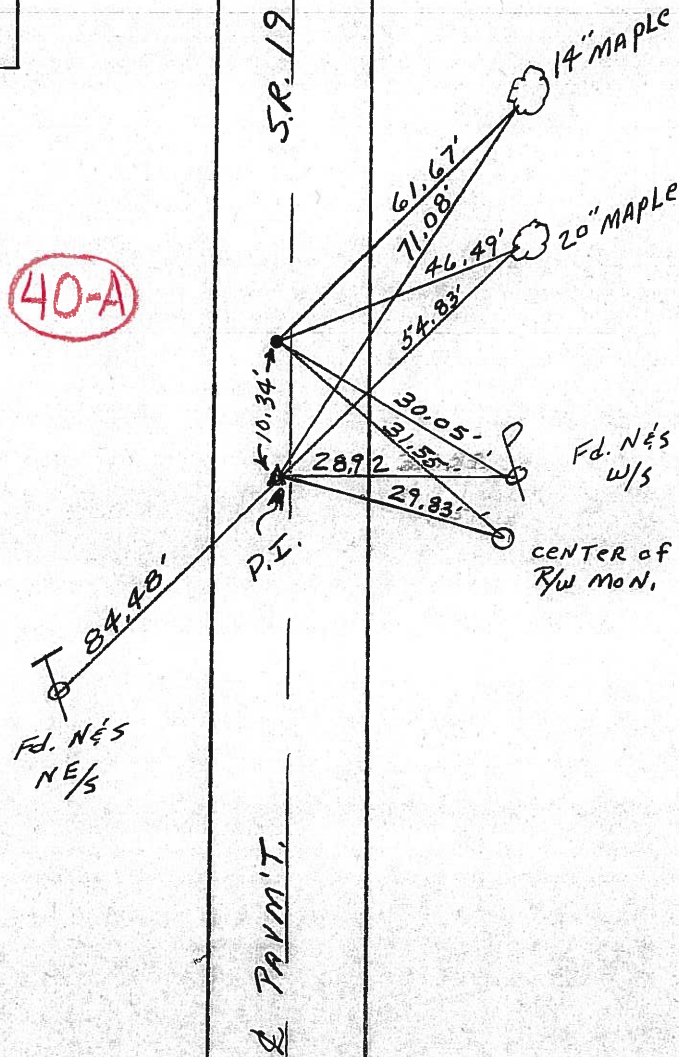
S.L.M. PI. 295+10

SET PK/WASHER
 9-28-1992
 J.L.R.



Record: 10-09-85
 P.I. Δ = 00° 38' 00" RT.
 STA. 61+00
 U.S. #224 Reloc. Point
 PK. & washer at top RR. Spk.

40-A



PERSONNEL TITLE PERSONNEL TITLE

COUNTY Seneca

DATE 4/7/72 (drawn)

Ash
Cronin
Ripple
Anderson

S. R. #19

WEATHER SUNNY

SEC. H

TEMP. 53°

DESCRIPTION Ties for Control Points - Bloomville North

JOB NO.

LEFT CENTER LINE RIGHT

Did not make temp. corrections

$\Delta = 00^\circ 08' Lt.$

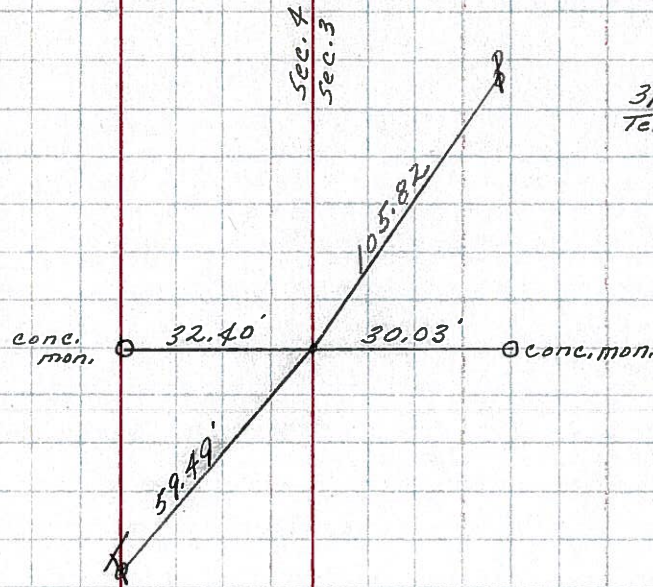
P.I.

69+00

Fd. R.L. spk. $2\frac{1}{2}$ " below surface. Brought to surface

#41

Bloom Twp.



3/21/72
Temp. 53°

40-A

$\Delta = 00^\circ 38' Rt.$

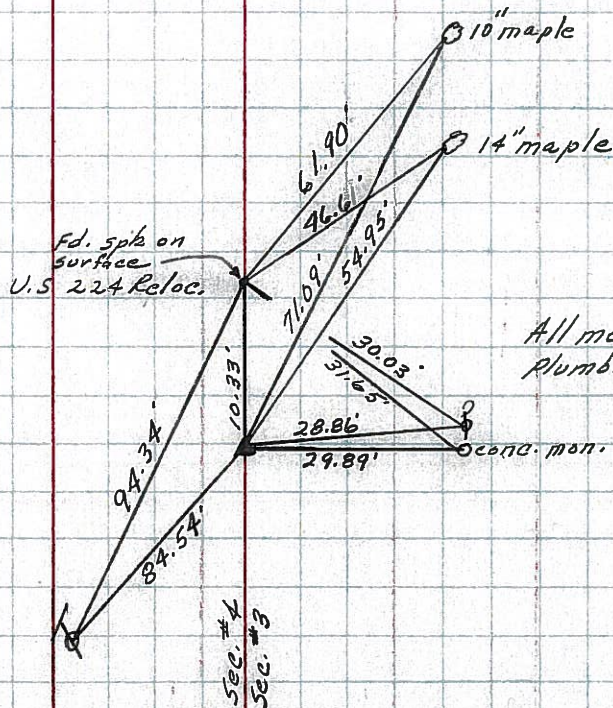
P.I.

61+00

Fd. R.L. spk. 5" below surface. Set small R.L. spk. atop 8' to the surface

#40

Bloom Twp.



3/20/72
Temp 53°

All measurements plumbed

