

O.D.O.T. DISTRICT 2 SURVEY OFFICE (USE ONLY)

PERSONNEL \_\_\_\_\_ REFERENCE NO. 41 SHEET 61 OF 64

NOTES RHOADES DATE 8-24-15 ROUTE SR 19

H.C. O'DONNELL WEATHER SUNNY COUNTY SENECA

R.C. RHOADES TEMP. 60°F TOWNSHIP BLOOM

SECTION 04

T 1 N R 16 E

TYPE MONUMENT PK/WASHER

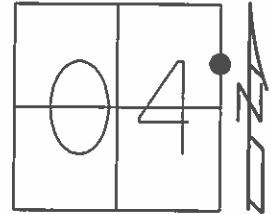
ON SURFACE - ~~BELOW~~ ON \_\_\_\_\_

~~LEFT~~ - CL PAV'T - RIGHT 0.5'

10' TO RT. EDGE PAVEMENT

S.L.M. 303+39.41

Grid: Northing: 514042.7274 Easting: 1826444.6428



RECORD PI 00°08'00" LT.  
 OLD STA. 69+00  
 RR SPK 3" DOWN  
 10-09-85

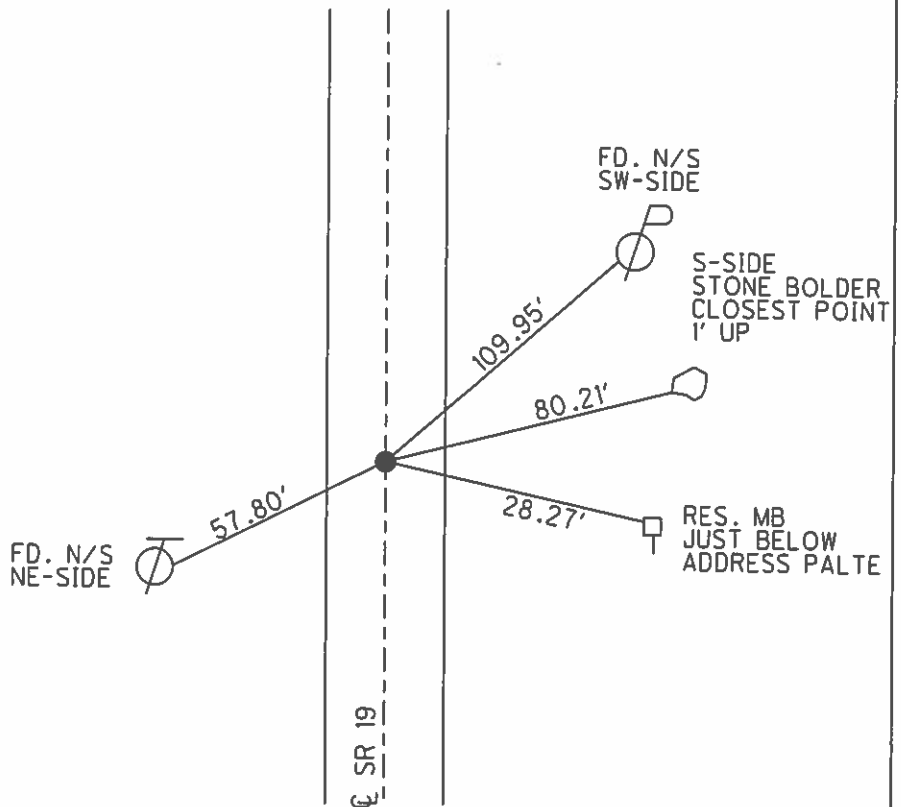
SET PK/WASHER  
 09-28-92, JLR

FD PK/WASHER  
 12-23-13, TMR

GPS, REF41  
 1-13-14, EBW

GPS, REF41  
 8-24-15

SET MAG/W  
 GPS, NEWREF41  
 7-25-16, JFO



O.D.O.T. DISTRICT 2 SURVEY OFFICE (USE ONLY)

PERSONNEL \_\_\_\_\_

REFERENCE NO. 41

SHEET 60 OF 62

NOTES CANTERBURY

DATE 05-29-07

ROUTE SR 19

H.C. ROUSOS

WEATHER FAIR

COUNTY SENECA

R.C. MOSER

TEMP. +80°

TOWNSHIP BLOOM

SECTION 16

T. 1 N R. 16 E

TYPE MONUMENT FD. PK/WASHER

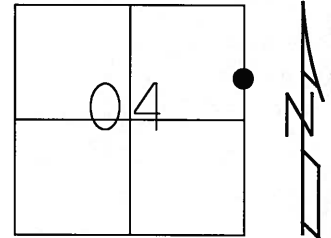
ON SURFACE - ~~BELOW~~ ON SURFACE

~~LEFT~~ - C PAV'T - ~~RIGHT~~ ON CL.

10' TO RT. EDGE OF CURB

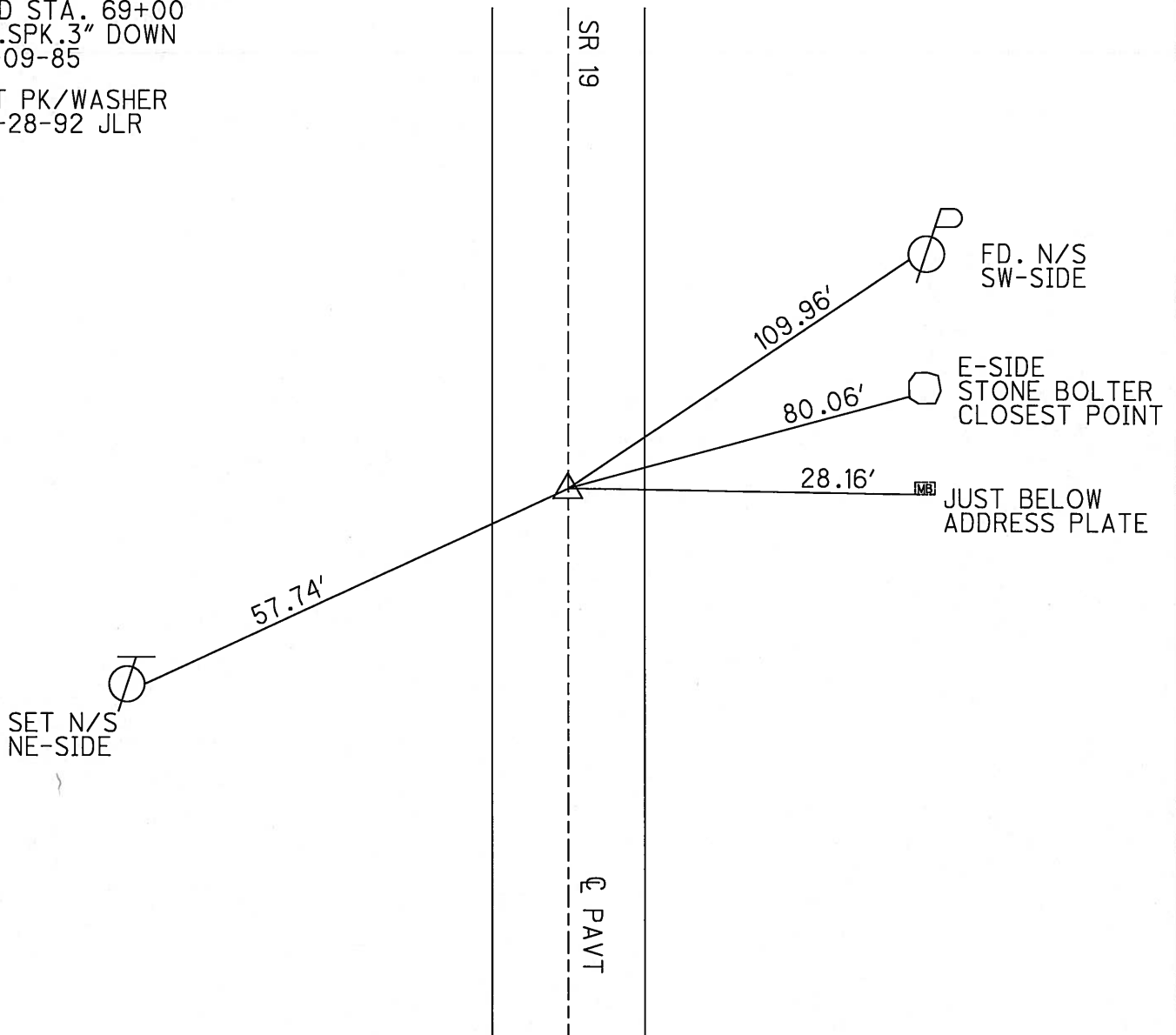
S.L.M. 303+15

Grid: Northing: \_\_\_\_\_ Easting: \_\_\_\_\_



RECORD PI 00°08'00" LT.  
 OLD STA. 69+00  
 RR.SPK.3" DOWN  
 10-09-85

SET PK/WASHER  
 09-28-92 JLR



O.D.O.T. DISTRICT 2 SURVEY OFFICE

PERSONNEL

REFERENCE NO. 41

SHEET 51 OF 53

NOTES RIPPLE

H.C. SARBOUR

DATE 6-23-1992

ROUTE #19

R.C. CHENEY

WEATHER CLOUDY

COUNTY SENCCA

GREYMAN

TEMP. 62°

TOWNSHIP Bloom

SECTION 4

T1 N R 16 E

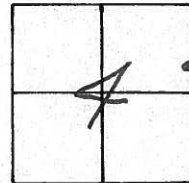
TYPE MONUMENT PK/WASHER

ON SURFACE - BELOW ON

LEFT - & PAV'T. - RIGHT YES

10' TO RT. EDGE PAVEMENT

S.L.M. 303+10

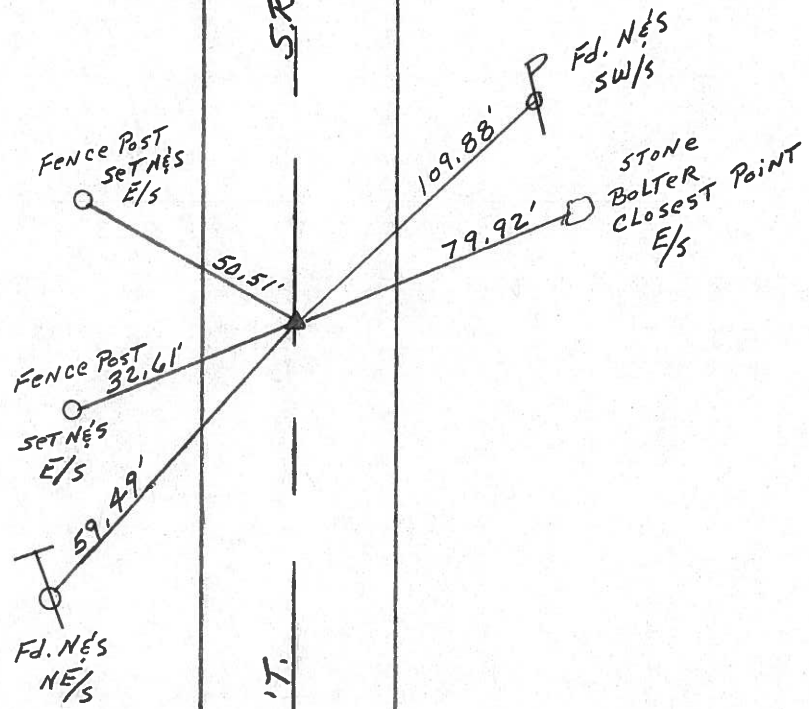


Record: 10-09-85  
 P.I. Δ = 00° 08' 00" LT.  
 STA. 69+00  
 RR. SPK. 3" Down

SET PK/WASHER  
 9-28-1992  
 J.L.R.

S.R. 19

& PAVM'T.



O.D.O.T. DISTRICT 2 SURVEY OFFICE

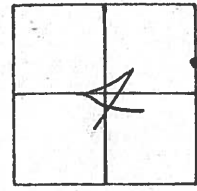
PERSONNEL

NOTES CEONIN Vac.  
H.C. RIPPLE  
R.C. BARBOUR  
GEYMAN

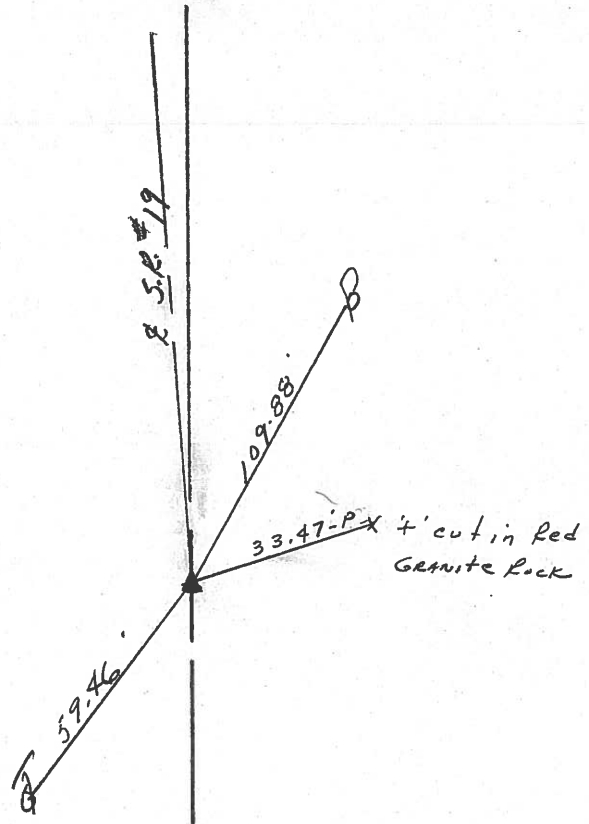
REFERENCE NO. 41  
DRAWN 10/23/85  
DATE 10/9/85  
WEATHER SUNNY  
TEMP. 70°

SHEET 50 OF \_\_\_\_\_  
ROUTE #19  
COUNTY SENECA  
TOWNSHIP BLOOM  
SECTION 7  
T 1 N R 16 E

TYPE MONUMENT P.R. spike  
ON SURFACE - BELOW 3" BELOW  
LEFT- & PAV'T. - RIGHT 1' RT. & PAVT.  
\_\_\_\_ TO \_\_\_\_ EDGE PAVEMENT  
S.L.M. \_\_\_\_\_



P.I.  
Δ = 00° 08' 00" - Lt.  
69+00



PERSONNEL TITLE PERSONNEL TITLE

COUNTY Seneca

DATE 4/7/72 (drawn)

Ash

Cronin

Ripple

Anderson

S. R. #19

WEATHER sunny

SEC. H

TEMP. 53°

DESCRIPTION Ties for Control Points - Bloomville North

JOB NO.

LEFT CENTER LINE RIGHT

Did not make temp. corrections

$\Delta = 00^\circ 08' Lt.$

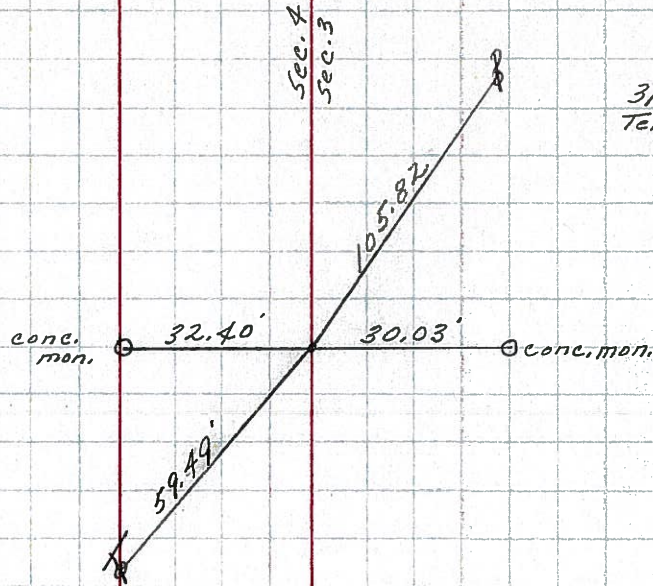
P.I.

69+00

Fd. R.R. spike  $2\frac{1}{2}$ " below surface. Brought to surface

#41

Bloom Twp.



3/21/72  
Temp. 53°

40-A

$\Delta = 00^\circ 38' Rt.$

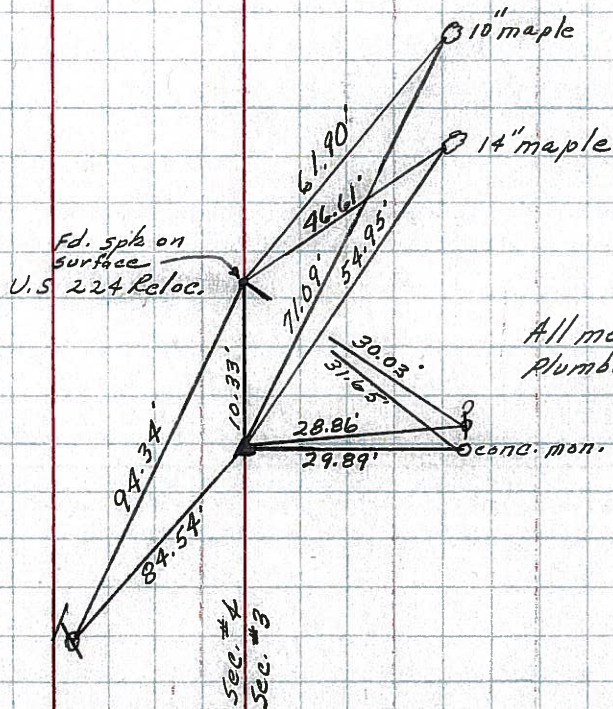
P.I.

61+00

Fd. R.R. spike 5" below surface. Set small B.L. spike at top 5' to the surface

#40

Bloom Twp.



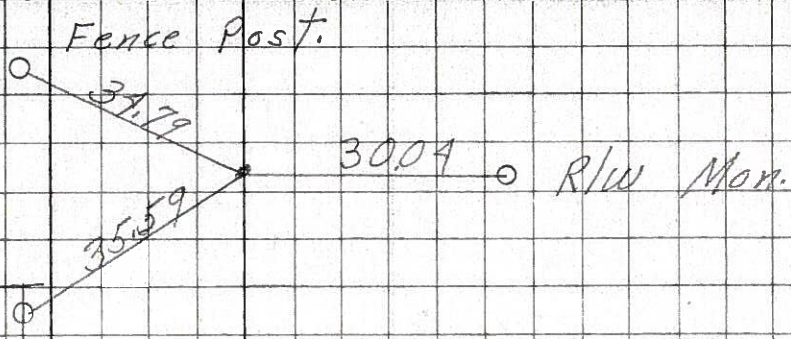
3/20/72  
Temp 53°

All measurements plumbed

PERSONNEL	TITLE	PERSONNEL	TITLE	COUNTY	DATE	WEATHER	TEMP.
Schneider				Seneca	7-28-69	Fair	75°
Mosser				S. R. 19			
Barbour				SEC. Bloomville North			
Potts							
DESCRIPTION	Ties for Control Points			LEFT	CENTER LINE	RIGHT	JOB NO.

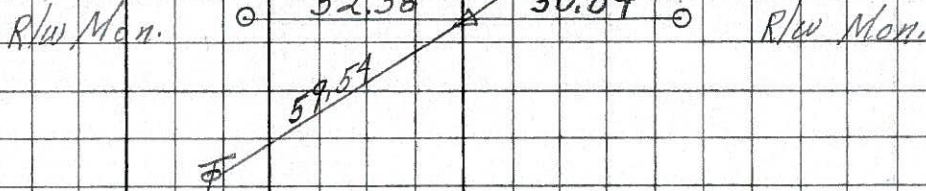
42

P.O.T.  
80+00  
Fd. R.R. spk.  
2 1/2" down  
**8250**



41

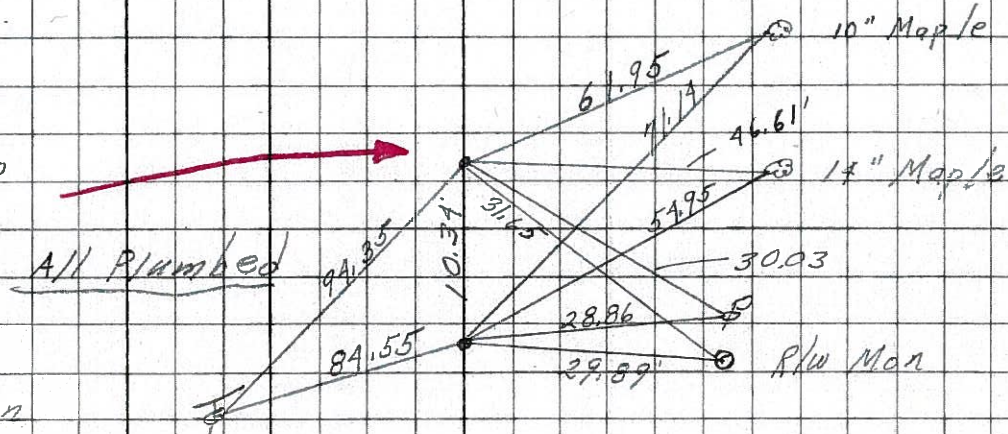
69+00  
R.R. spk.  
2 1/2" down  
 $\Delta = 0^\circ 08' LT$



**8249**

40-A

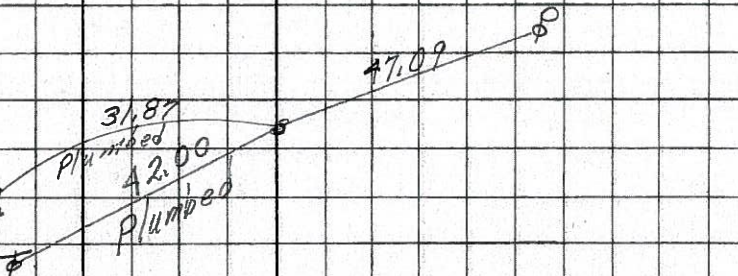
1163+83 = 99+00  
U.S. 224 Reloc



**8248**

40

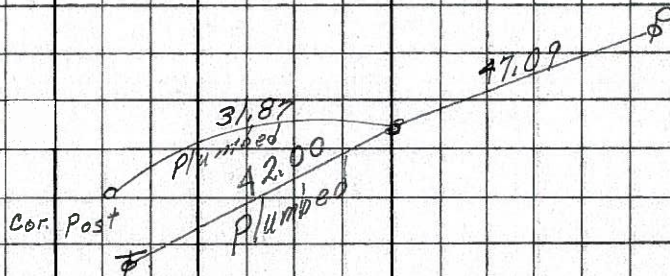
61+00  
Fd. R.R. spk. 5" down  
 $\Delta = 0^\circ 38' RT$



**8247**

39

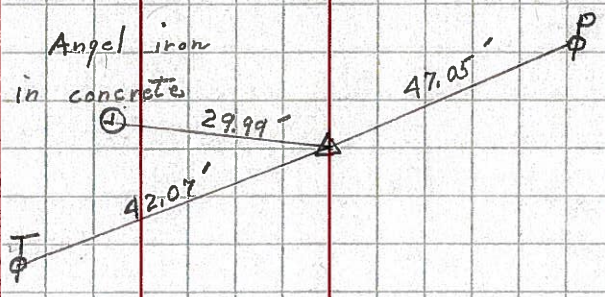
48+00  
Fd. R.R. spk.  
2 1/2" down  
 $\Delta = 0^\circ 0'$



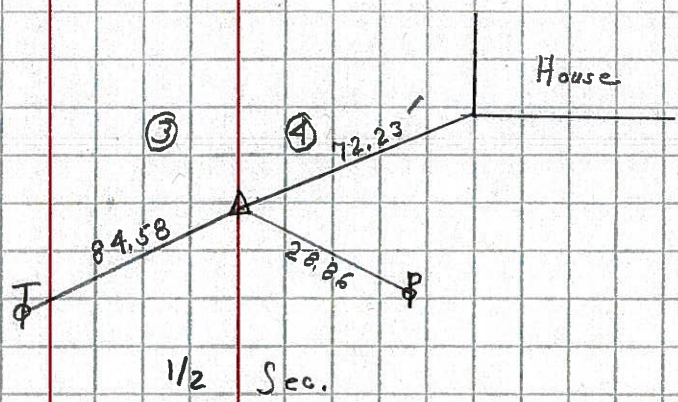
PERSONNEL TITLE PERSONNEL TITLE COUNTY Seneca DATE 8/13/64  
Krabill \_\_\_\_\_ R. R. # 19 N. of Bloomville WEATHER \_\_\_\_\_  
Kowalewski \_\_\_\_\_  
Bruggeman \_\_\_\_\_  
 \_\_\_\_\_ SEC. \_\_\_\_\_ TEMP. \_\_\_\_\_

DESCRIPTION Control Pts. \_\_\_\_\_ JOB NO. \_\_\_\_\_  
 LEFT CENTER LINE RIGHT

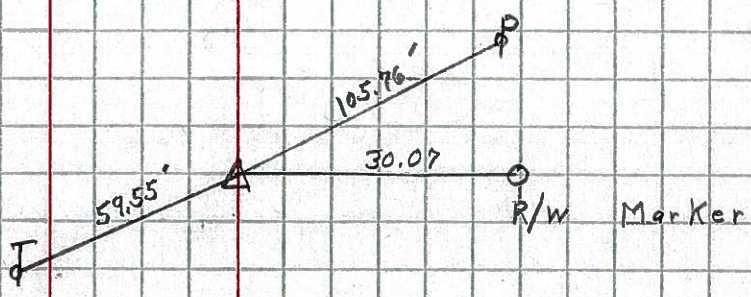
**39** STA. 282 + 26.10  
 R. R. Spike  
 $\Delta = 0^\circ 0'$   
 (P.K.) # 5



**40** STA. 295 + 24.10  
 R. R. Spike  
 $\Delta = 0^\circ 38'$  RT.  
 (P.K.) # 6



**41** STA. 303 + 23.20  
 R. R. Spike  
 $\Delta = 0^\circ 08'$  Lt.  
 (P.K.) # 7



**42** STA. 314 + 24.86  
 R. R. Spike  
 $\Delta = 0^\circ 0'$   
 P.K. # 8

