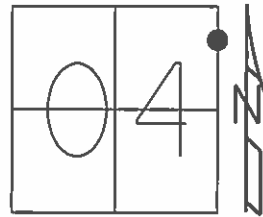


O.D.O.T. DISTRICT 2 SURVEY OFFICE (USE ONLY)

PERSONNEL _____ REFERENCE NO. 41 A SHEET 62 OF 64
 NOTES RHOADES DATE 8-24-15 ROUTE SR 19
 H.C. O'DONNELL WEATHER SUNNY COUNTY SENECA
 R.C. RHOADES TEMP. 60°F TOWNSHIP BLOOM
 _____ SECTION 4
 _____ T 1 N R 16 E

TYPE MONUMENT PK/WASHER
 ON SURFACE - ~~BELOW~~ ON _____
 LEFT - ☉ PAV'T - RIGHT ON
10' TO RT. EDGE PAVEMENT
 S.L.M. 306+80.41
 Grid: Northing: 514383.7214 Easting: 1826448.0222



RECORD
 US 224 RELOC.
 PK. NAIL 2" DOWN
 10-09-85

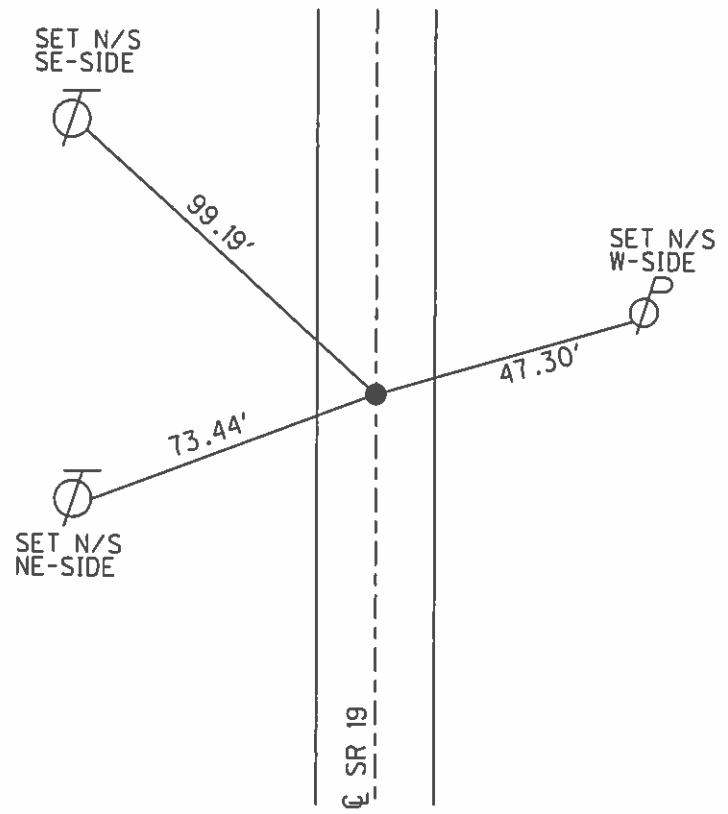
SET PK/WASHER
 09-28-92, JLR

FD. PK/WASHER
 12-23-13, TMR

GPS, REFA41
 1-13-14, EBW

GPS, REFA41
 8-24-15

SET MAG/WASHER
 GPS, NEWREFA41
 7-25-16, JFO



O.D.O.T. DISTRICT 2 SURVEY OFFICE (USE ONLY)

PERSONNEL _____

REFERENCE NO. 41A

SHEET 61 OF 62

NOTES CANTERBURY

DATE 05-29-07

ROUTE SR 19

H.C. ROUSOS

WEATHER FAIR

COUNTY SENECA

R.C. MOSER

TEMP. +80°

TOWNSHIP BLOOM

SECTION 16

T 1 N R 16 E

TYPE MONUMENT FD. PK/WASHER

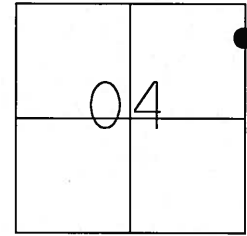
ON SURFACE - ~~BELOW~~ ON SURFACE

~~LEFT~~ - CL PAV'T - ~~RIGHT~~ ON CL.

10' TO RT. EDGE OF CURB

S.L.M. 306+57

Grid: Northing: _____ Easting: _____



RECORD
US 224 RELOC,
PK. NAIL 2" DOWN
10-09-85

SET PK/WASHER
09-28-92 JLR

SET N/S
SE-SIDE



99.27'

SR 19

44.79'

FD. N/S
W-SIDE



73.38'

SET N/S
NE-SIDE



341.20' (REC)
CL PAVT

REF 41
FD. PK/
WASHER



O.D.O.T. DISTRICT 2 SURVEY OFFICE

PERSONNEL

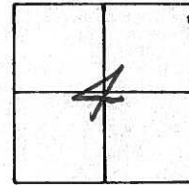
REFERENCE NO. 41-A SHEET 52 OF 53

NOTES Cheney
 H.C. RIPPLE
 R.C. BARBOUR
Geyman

DATE 6-24-1992
 WEATHER SUNNY
 TEMP. 70°

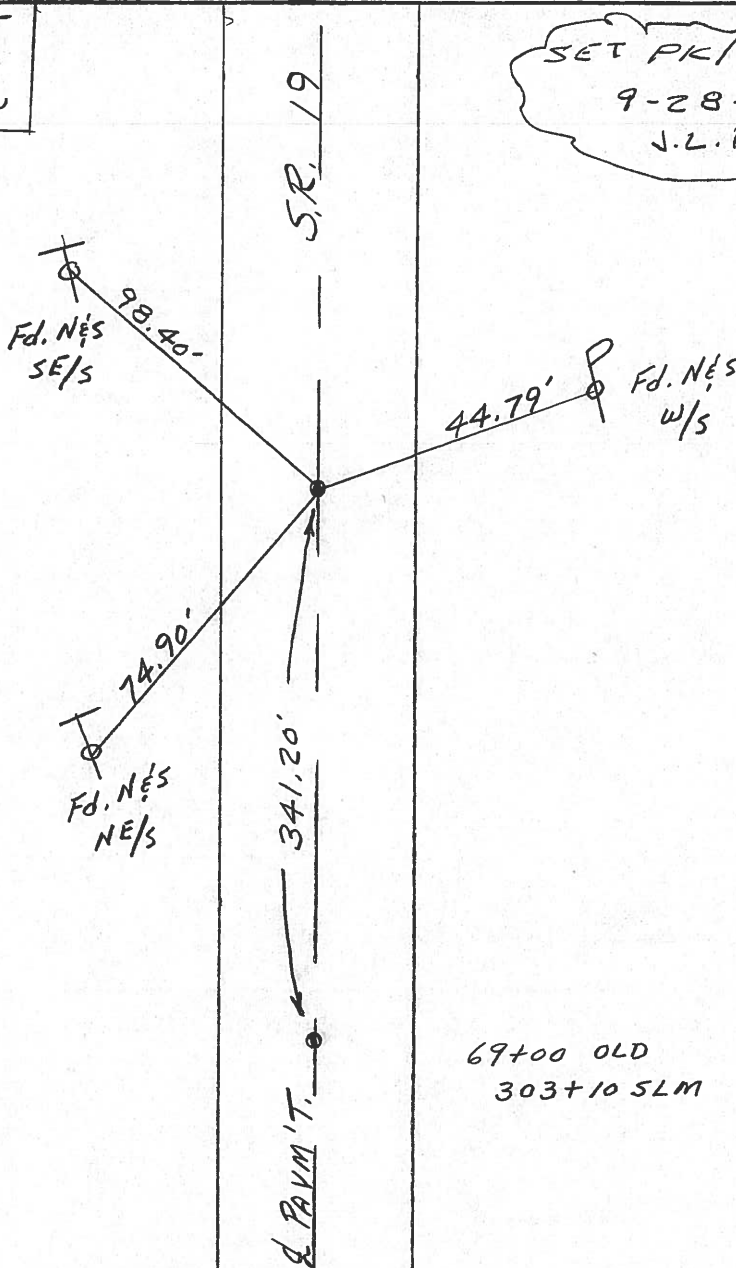
ROUTE #19
 COUNTY Seneca
 TOWNSHIP Bloom
 SECTION 4
T1 N R 16 E

TYPE MONUMENT P.K./WASHER
 ON SURFACE - ~~BELOW~~ ON
~~LEFT - & PAV'T. - RIGHT~~ yes
10" TO RT. EDGE PAVEMENT
 S.L.M. 306+51



RECORDED: 10-9-1985
 U.S. 224 RELOC.
 P.K. NAIL 2" BELOW

SET P.K./WASHER
 9-28-1992
 J.L.R.



69+00 OLD
 303+10 SLM

O.D.O.T. DISTRICT 2 SURVEY OFFICE

PERSONNEL

REFERENCE NO. _____

SHEET 51 OF _____

NOTES CROWN VAC.

DRAWN 10/23/85

H.C. RIPPLE

DATE 10/9/85

ROUTE #19

R.C. BARBOUR

WEATHER SUNNY

COUNTY SENECA

GEYMAN

TEMP. 75°

TOWNSHIP BLOOM

SECTION 4

T. N R. 16 E

TYPE MONUMENT P.K.

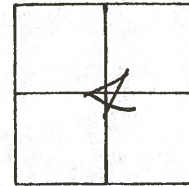
ON SURFACE - BELOW 2" BELOW

LEFT - ☉ PAV'T. - RIGHT ☉ PAVT

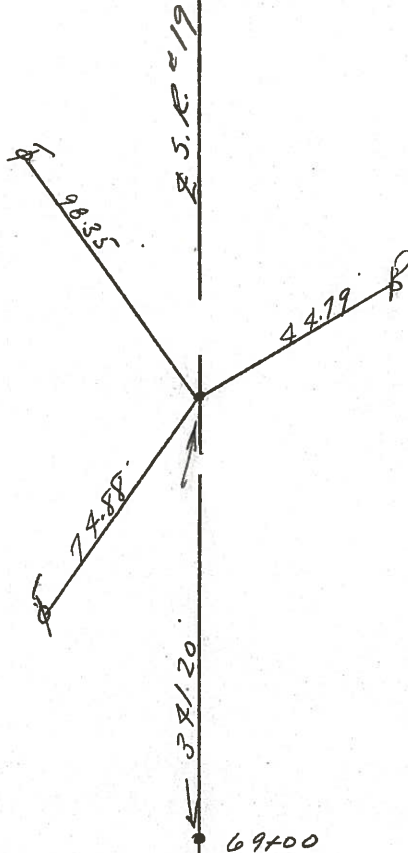
TO EDGE PAVEMENT

S.L.M. _____

41-A



U.S. #224 RELOC.



PERSONNEL TITLE PERSONNEL TITLE

Ash
Cromin
Ripple
Anderson

COUNTY Seneca

S. R. #19

WEATHER sunny

SEC. H.

TEMP. 53°

DESCRIPTION Ties for Control Points - Bloomville North

JOB NO.

