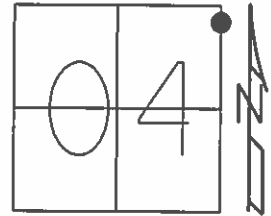


O.D.O.T. DISTRICT 2 SURVEY OFFICE (USE ONLY)

PERSONNEL \_\_\_\_\_ REFERENCE NO. 42 SHEET 63 OF 64  
 NOTES RHOADES DATE 08-24-15 ROUTE SR 19  
 H.C. O'DONNELL WEATHER SUNNY COUNTY SENECA  
 R.C. RHOADES TEMP. 60°F TOWNSHIP BLOOM  
 \_\_\_\_\_ SECTION 4  
 \_\_\_\_\_ T 1 N R 16 E

TYPE MONUMENT PK/WASHER  
 ON SURFACE ~~BELOW~~ ON \_\_\_\_\_  
~~LEFT~~ - ℄ PAV'T - RIGHT 0.8'  
9.2' TO RT. EDGE PAVEMENT  
 S.L.M. 314+40.69  
 Grid: Northing: 515143.886 Easting: 1826455.9089



RECORD POT  
 OLD STA. 80+00  
 PK/WASHER  
 ATOP PK/SHINER  
 ATOP RR. SPK.  
 10-09-85

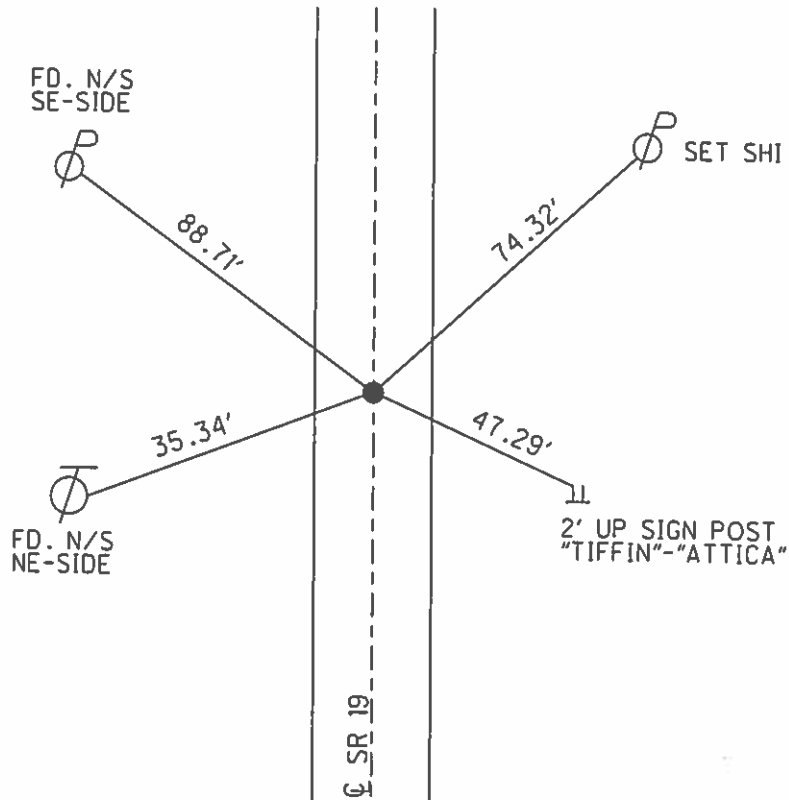
SET PK/WASHER  
 09-28-92, JLR

FD. PK/WASHER  
 12-23-13, TMR

GPS, REF42  
 1-13-14, EBW

GPS REF42  
 8-24-15

SET MAG/WASHER  
 GPS, NEWREF42  
 7-25-16, JFO



O.D.O.T. DISTRICT 2 SURVEY OFFICE (USE ONLY)

PERSONNEL \_\_\_\_\_

REFERENCE NO. 42

SHEET 62 OF 62

NOTES CANTERBURY

DATE 05-29-07

ROUTE SR 19

H.C. ROUSOS

WEATHER FAIR

COUNTY SENECA

R.C. MOSE

TEMP. +80°

TOWNSHIP BLOOM

SECTION 16

T 1 N R 16 E

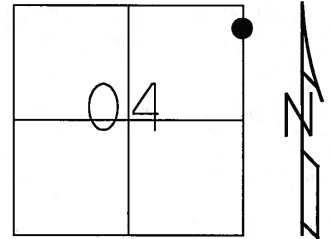
TYPE MONUMENT FD. PK/WASHER

ON SURFACE - ~~BELOW~~ ON SURFACE

~~LEFT - C PAV'T~~ - RIGHT 0.8' RT.

9.2' TO RT. EDGE OF CURB

S.L.M. 314+17



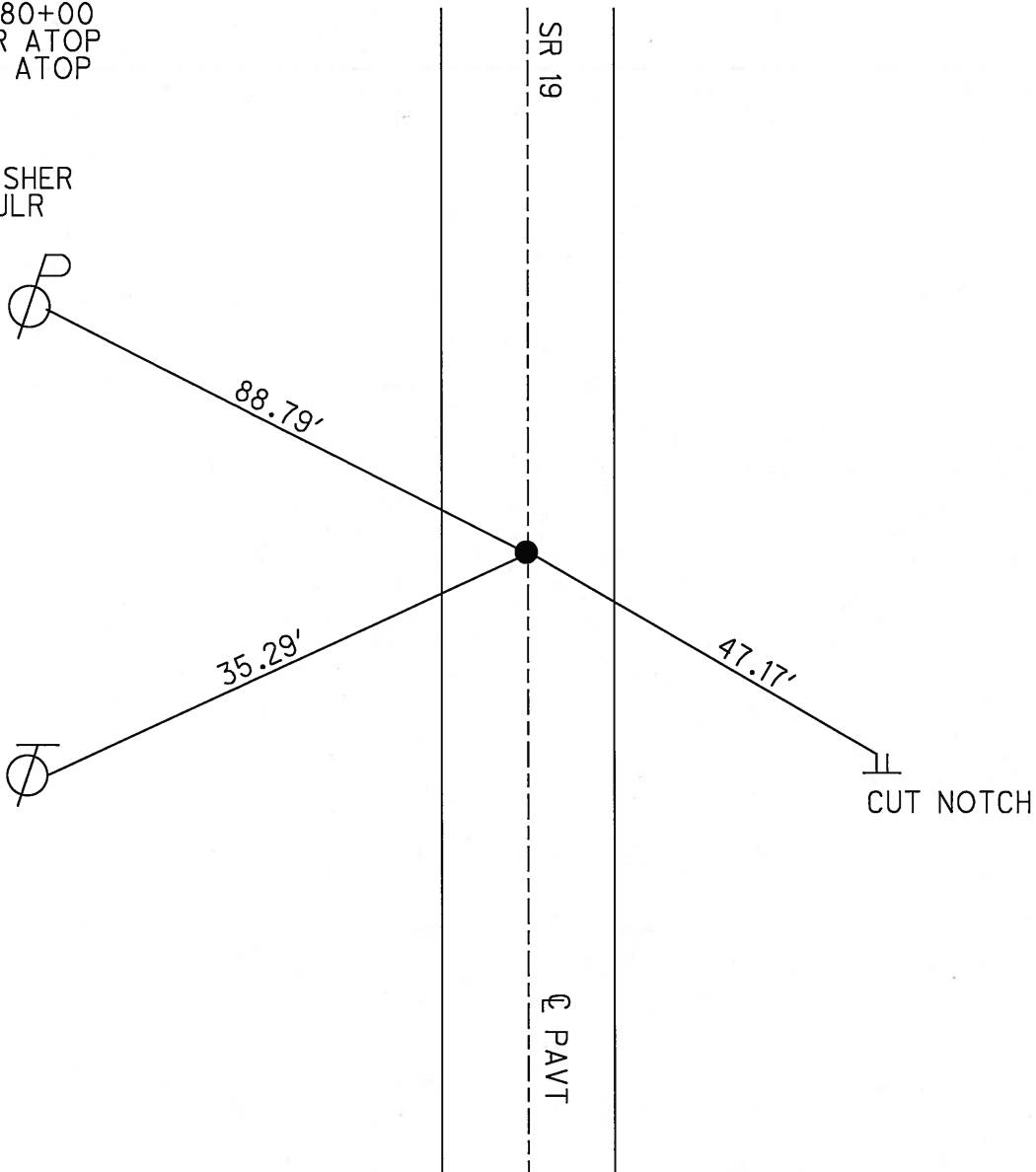
Grid: Northing: \_\_\_\_\_ Easting: \_\_\_\_\_

RECORD POT  
 OLD STA. 80+00  
 PK/WASHER ATOP  
 PK/SHINER ATOP  
 RR.SPK.  
 10-09-85

SET PK/WASHER  
 09-28-92 JLR

FD. N/S  
 SE-SIDE

FD. N/S  
 NE-SIDE



O.D.O.T. DISTRICT 2 SURVEY OFFICE

PERSONNEL

REFERENCE NO. 42

SHEET 53 OF 53

NOTES Cheney

H.C. RIPPLE

R.C. BARBOUR

Geyman

DATE 6-24-1992

WEATHER SUNNY

TEMP. 70°

ROUTE #19

COUNTY SENECA

TOWNSHIP Bloom

SECTION 4

T1 N R 16 E

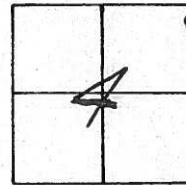
TYPE MONUMENT PK/WASHER

ON SURFACE - ~~BELOW~~ ON

LEFT - & PAV'T. - RIGHT 0.8'

9.2' TO RT. EDGE PAVEMENT

S.L.M. 314+12



RECORD: 10-9-1985

P.O.T. STA. 80+00

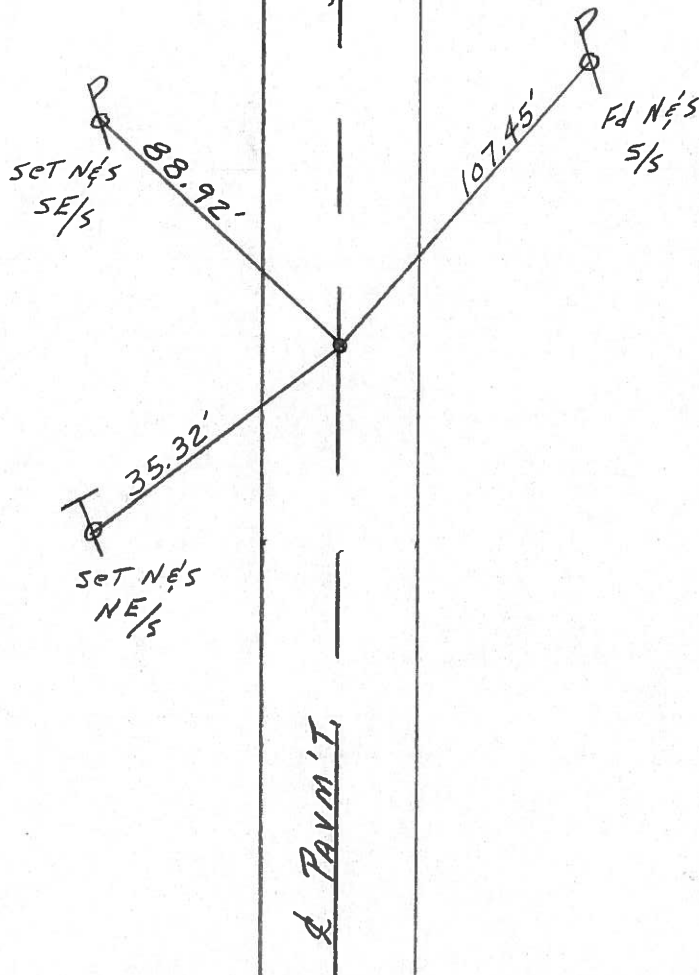
PK/WASHER ATOP

PK/SHINER ATOP

R.R. SPK.

1' RT. & PAV'T.

SET PK/WASHER  
9-28-1992  
J.L.R.



O.D.O.T. DISTRICT 2 SURVEY OFFICE

PERSONNEL

REFERENCE NO. 42 SHEET 52 OF     

NOTES CRONIN VAC.

H.C. RIPPLE

R.C. BARBOUR

GEYMAN

DATE 10/9/85

WEATHER SUNNY

TEMP. 75°

ROUTE #19

COUNTY SENECA

TOWNSHIP BLOOM

SECTION 4

T. 1 N. R. 16 E.

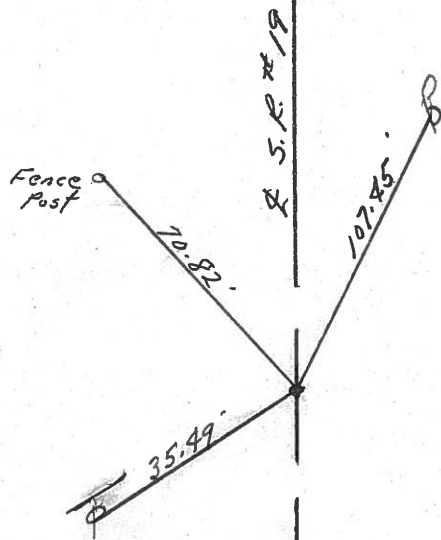
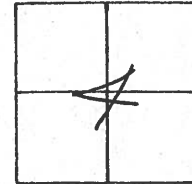
TYPE MONUMENT P.K. WASHER atop P.K. SHINER

ON SURFACE - BELOW ATOP R.R. SPK.  
ON SURFACE

LEFT - 0 PAV'T. - RIGHT 1' Rt. & Pavt.

TO      EDGE PAVEMENT

S.L.M.     



P.O.T.  
80+00



PERSONNEL TITLE PERSONNEL TITLE

Ash \_\_\_\_\_

Cronin \_\_\_\_\_

Ripple \_\_\_\_\_

Anderson \_\_\_\_\_

COUNTY Seneca

S. R. #19

SEC. H.

WEATHER Sunny

TEMP. 53°

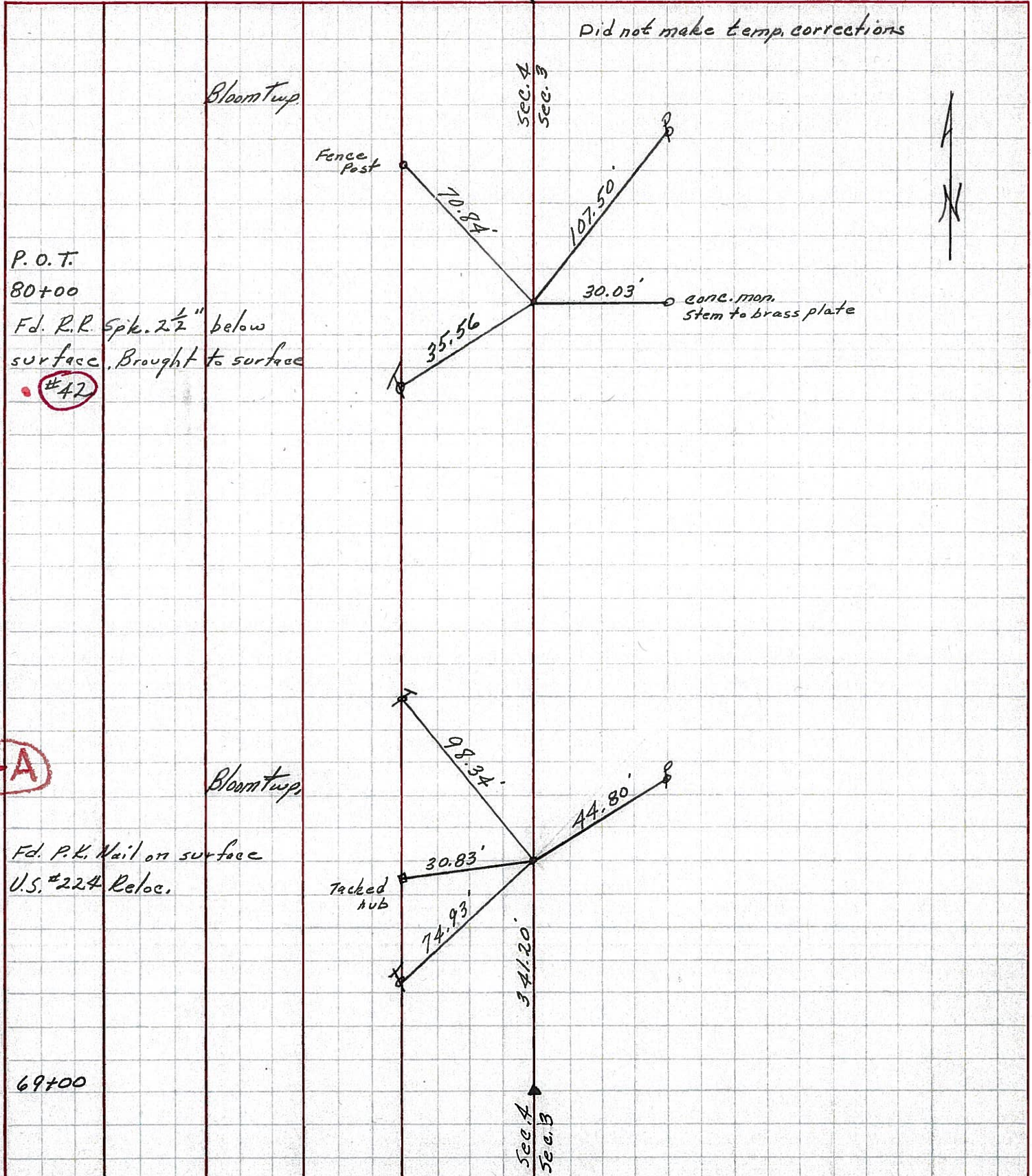
DESCRIPTION Ties for Control Points - Bloomville North

JOB NO.

LEFT

CENTER LINE

RIGHT





PERSONNEL TITLE PERSONNEL TITLE

Schneider  
Mosser  
Barbour  
Potts

COUNTY Seneca DATE 7-28-69

S. R. 19 WEATHER Fair

SEC. Bloomville North TEMP. 75°

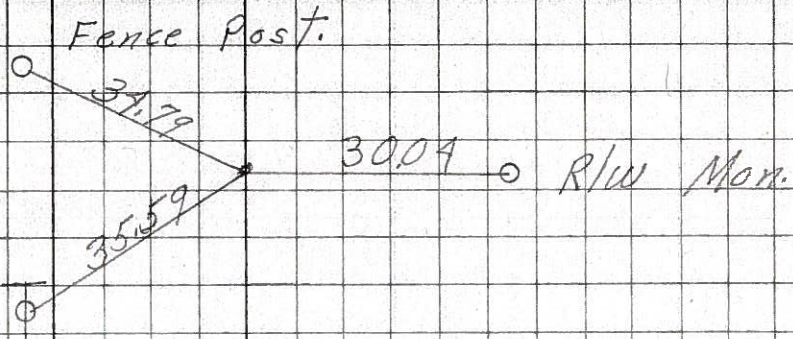
DESCRIPTION Ties for Control Points

JOB NO.

LEFT CENTER LINE RIGHT

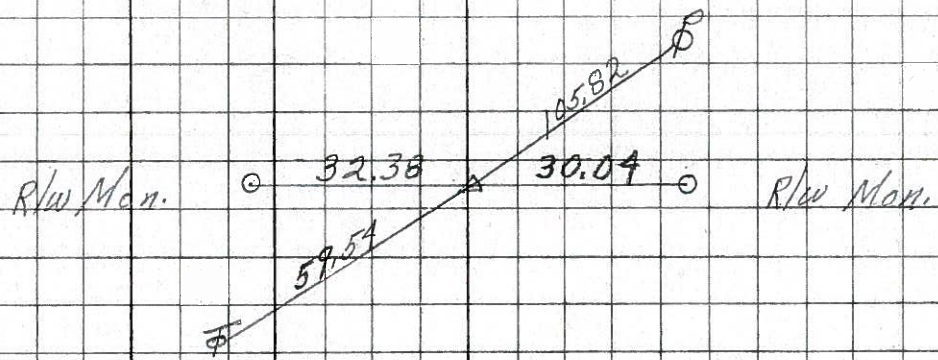
42

P.O.T.  
80+00  
Fd. R.R. spk.  
2 1/2" down  
8250



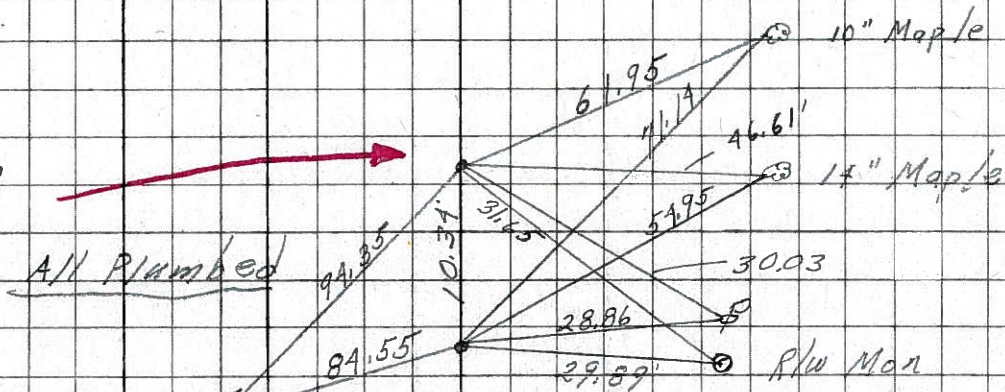
41

69+00  
R.R. spk.  
2 1/2" down  
Δ = 0° 08' Lt  
8249



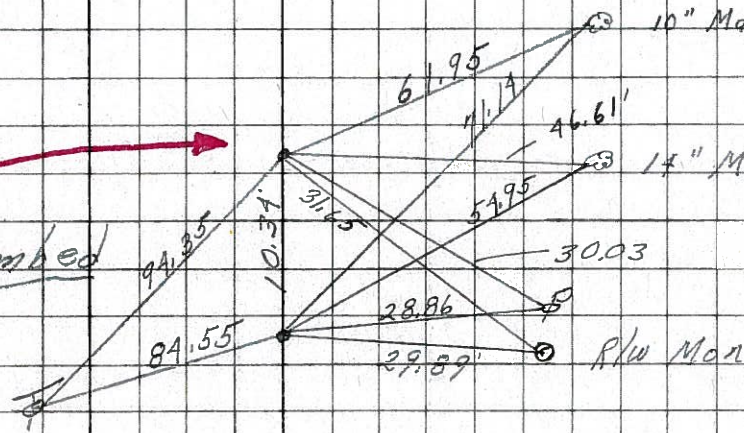
40-A

1163+83 = 49+00  
US. 224 Reloc



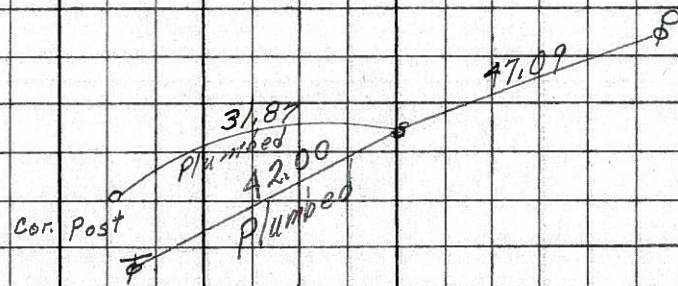
40

61+00  
Fd. R.R. spk. 5" down  
Δ = 0° 38' Rt  
8248



39

48+00  
Fd. R.R. spk.  
2 1/2" down  
Δ = 0° 0'



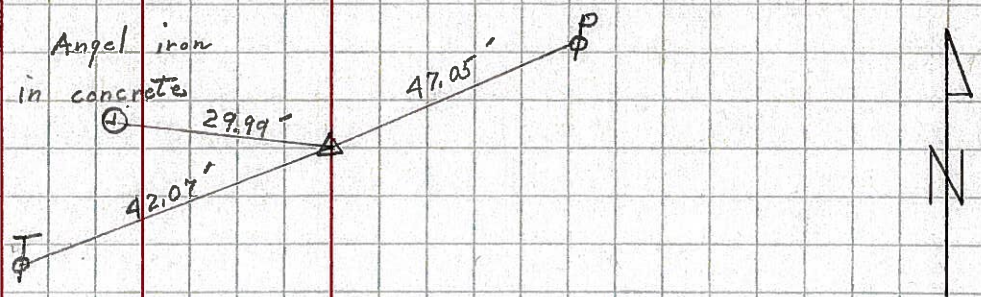
8247



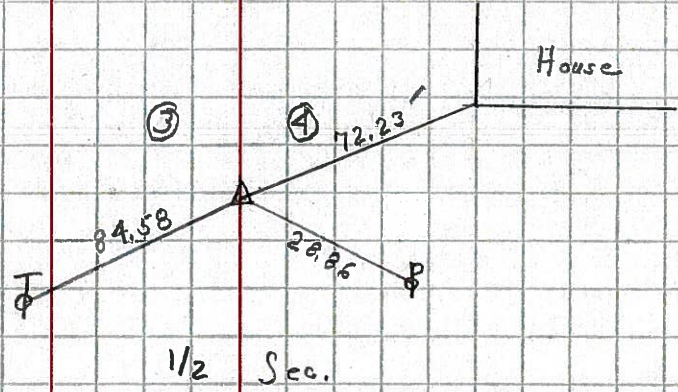
PERSONNEL	TITLE	PERSONNEL	TITLE	COUNTY	DATE
Krabi //				Seneca	3/13/64
Kowaleski				S. R. # 19 N. of Bloomville	WEATHER
Bruggeman				SEC.	TEMP.

DESCRIPTION Control PTS. LEFT CENTER LINE RIGHT JOB NO.

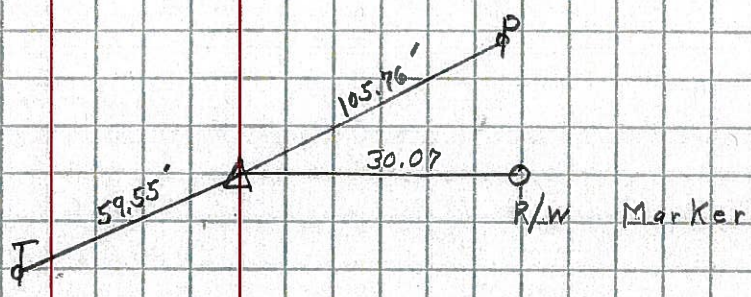
39 STA. 282 + 26.10  
 R.R. Spike  
 $\Delta = 0^\circ 0'$   
 (P.K.) # 5



40 STA. 295 + 24.10  
 R.R. Spike  
 $\Delta = 0^\circ 38'$  RT.  
 (P.K.) # 6



41 STA. 303 + 23.20  
 R.R. Spike  
 $\Delta = 0^\circ 08'$  Lt.  
 (P.K.) # 7



42 STA. 314 + 24.86  
 R.R. Spike  
 $\Delta = 0^\circ 0'$   
 P.K. # 8

