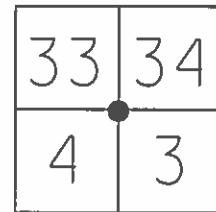


O.D.O.T. DISTRICT 2 SURVEY OFFICE (USE ONLY)

PERSONNEL \_\_\_\_\_ REFERENCE NO. 43 SHEET 64 OF 64

NOTES CHENEY DATE 11-30-92 ROUTE SR 19  
 H.C. RIPPLE WEATHER CLOUDY COUNTY SENECA  
 R.C. BARBOUR TEMP. 35°F TOWNSHIP BLOOM  
GEYMAN SECTION 4  
 T 1 N R 16 E

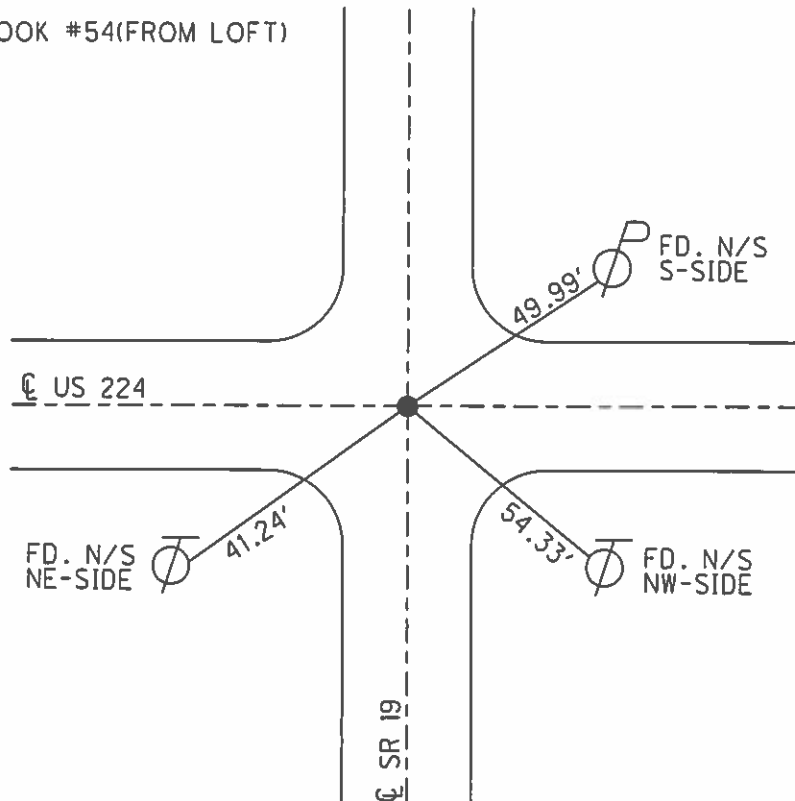
TYPE MONUMENT BOAT SPIKE  
 ON SURFACE - ~~BELOW~~ ON \_\_\_\_\_  
 LEFT - ☉ PAV'T - ~~RIGHT~~ 2'  
8' TO LT. EDGE PAVEMENT  
 S.L.M. 320+55.86



Grid: Northing: 515759.1048 Easting: 1826461.3348

RECORD:  
 P.I. STA. 1208+89.68  
 SET PK/WASHER  
 ATOP BOAT SPK./WASHER  
 ATOP RR. SPK.  
 R.R. SPK. FIELD BOOK #54(FROM LOFT)  
 10-28-82  
  
 SET P.K./WASHER  
 11/30/92, JLR  
  
 FD PK/WASHER  
 12-23-13, TMR  
  
 GPS, REF43  
 1-13-14, EBW

NOTE: REF 68, (SR#224)



O.D.O.T. DISTRICT 2 SURVEY OFFICE

PERSONNEL

REFERENCE NO. 68 <sup>SR 224</sup>  
#43 <sup>SR 19</sup>

SHEET 7 OF 32

NOTES Cheney

H.C. RIPPLE

R.C. BARBOUR

Geyman

DATE 11-30-92

WEATHER Cloudy

TEMP. 35°

ROUTE U.S. 224

COUNTY Seneca

TOWNSHIP Scipio & Bloom

SECTION 33 & 34 - 3 & 4

T. 7 N R. 16 E

TYPE MONUMENT <sup>6-30-92</sup> Fd. BOAT Spk. 6-30-92 <sup>Reset P.K. & washer 11-30-92</sup>

ON SURFACE - ~~BELOW~~ yes

LEFT - Q PAV'T. - ~~RIGHT~~ 2'

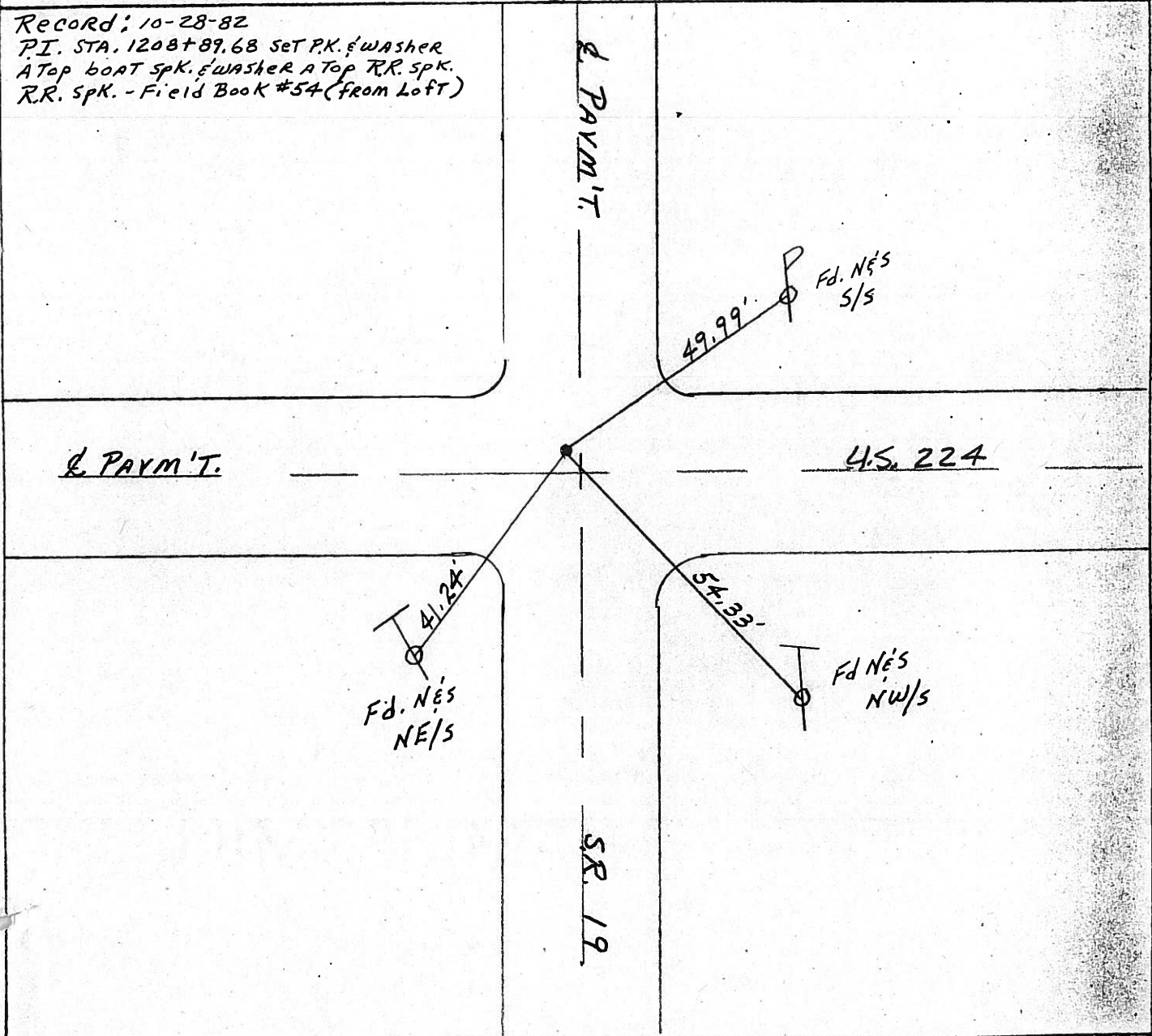
8' TO LT. EDGE PAVEMENT

S.L.M. 1158+06

33	34
4	3



Record: 10-28-82  
P.I. STA. 1208+89.68 Set P.K. & washer  
A Top boat Spk. & washer A Top RR. Spk.  
RR. Spk. - Field Book #54 (from Loft)



# Resurfaced 1994

LD-5-(25M-2-59)

SHEET NO. 27

PERSONNEL TITLE PERSONNEL TITLE

COUNTY Seneca

drawn 1/24/72

Ash

S. R. #19

DATE 3/21/72

Cronin

WEATHER sunny

Ripple

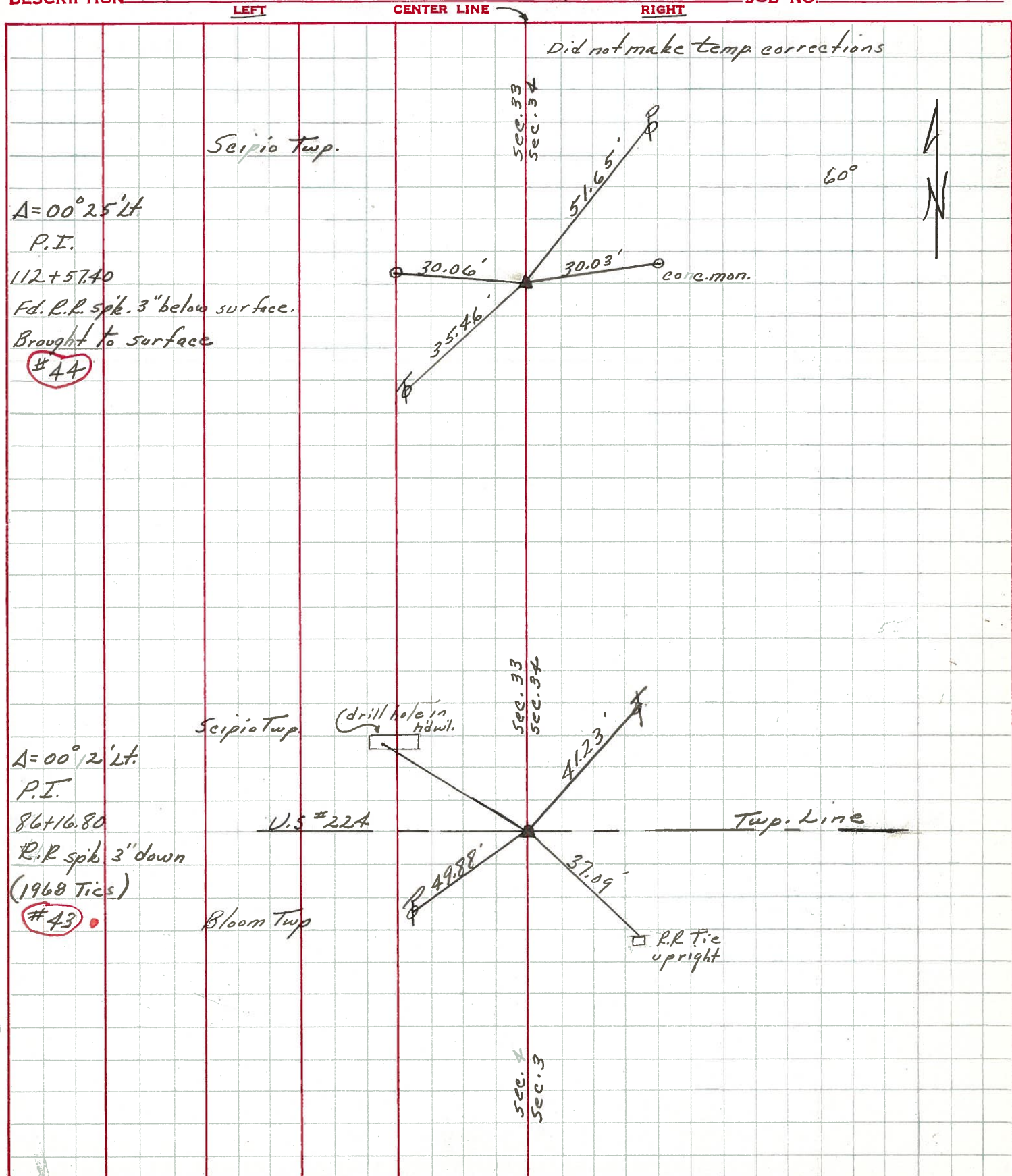
SEC. H

TEMP. 53°

Anderson

DESCRIPTION Ties for Control Points - Bloomville North

JOB NO. \_\_\_\_\_



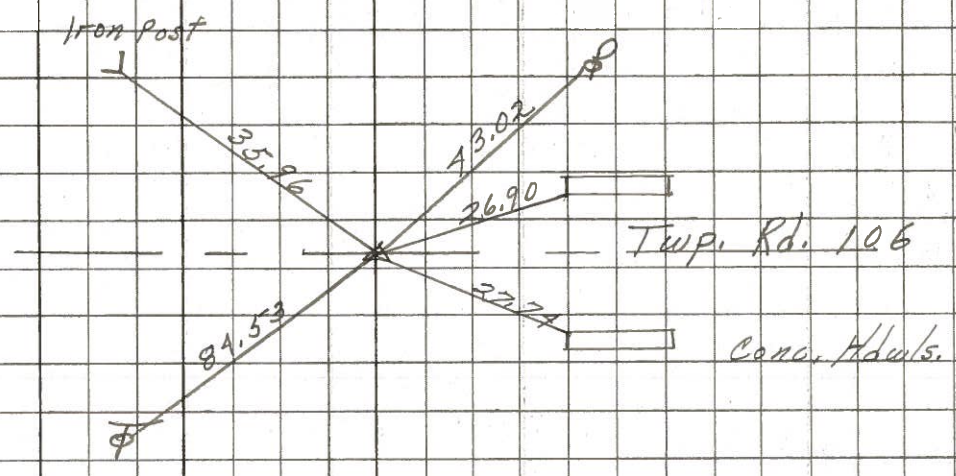
PERSONNEL	TITLE	PERSONNEL	TITLE	COUNTY	DATE	WEATHER	TEMP.
Schneider				Seneca	8-1-69	Cloudy	80°
Mosser				S. R. 19			
Barbour				SEC. U.S. 224-North			
Potts							

DESCRIPTION Ties for Control Points JOB NO. \_\_\_\_\_

46

138+97.3  
 $\Delta = 0^\circ 04' \text{ Rt.}$   
 R.R. spk. 1/2" down  
 set small on top

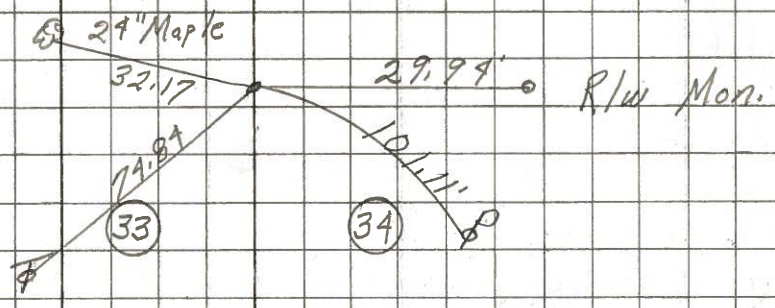
8254



45

127+00  
 $\Delta = 0^\circ 00'$   
 Ed. R.R. spk. 3" down

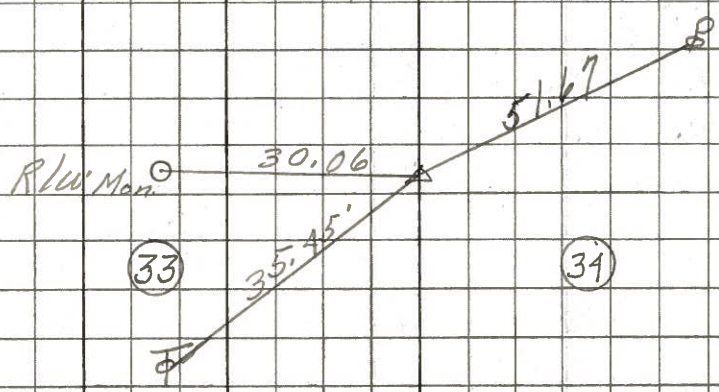
8253



44

112+57.4  
 $\Delta = 0^\circ 25' \text{ Lt.}$   
 Ed. R.R. spk. 3" down

8252



43

$\Delta = 0^\circ 12' \text{ Lt.}$   
 86+16.80  
 Inter section  
 S.R. 19 & U.S. 224  
 Tied in on U.S. 224 Notes

8251

U.S. #224

