

O.D.O.T. DISTRICT 2 SURVEY OFFICE (USE ONLY)

PERSONNEL

REFERENCE NO. 44

SHEET 1 OF 10

NOTES LOEHRKE

DATE 6-17-94

ROUTE SR 19

H.C. CANTERBURY

WEATHER HOT

COUNTY SENECA

R.C. HERMILLER

TEMP. +95

TOWNSHIP SCIPIO

VOGEL, PRUNTY

SECTION 33

DWG BY NIESE PID 107060

T 2 N R 16 E

TYPE MONUMENT P.K./WASHER

ON SURFACE - ~~BELOW~~ ON

OFFSET \odot PAVEMENT ON LT : RT

12.0 TO LT EDGE PAVEMENT

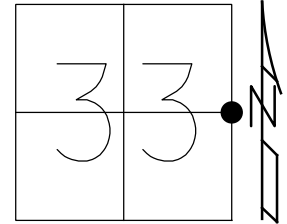
STATION: 346+71

HORIZ.DATUM: NAD83(2011)

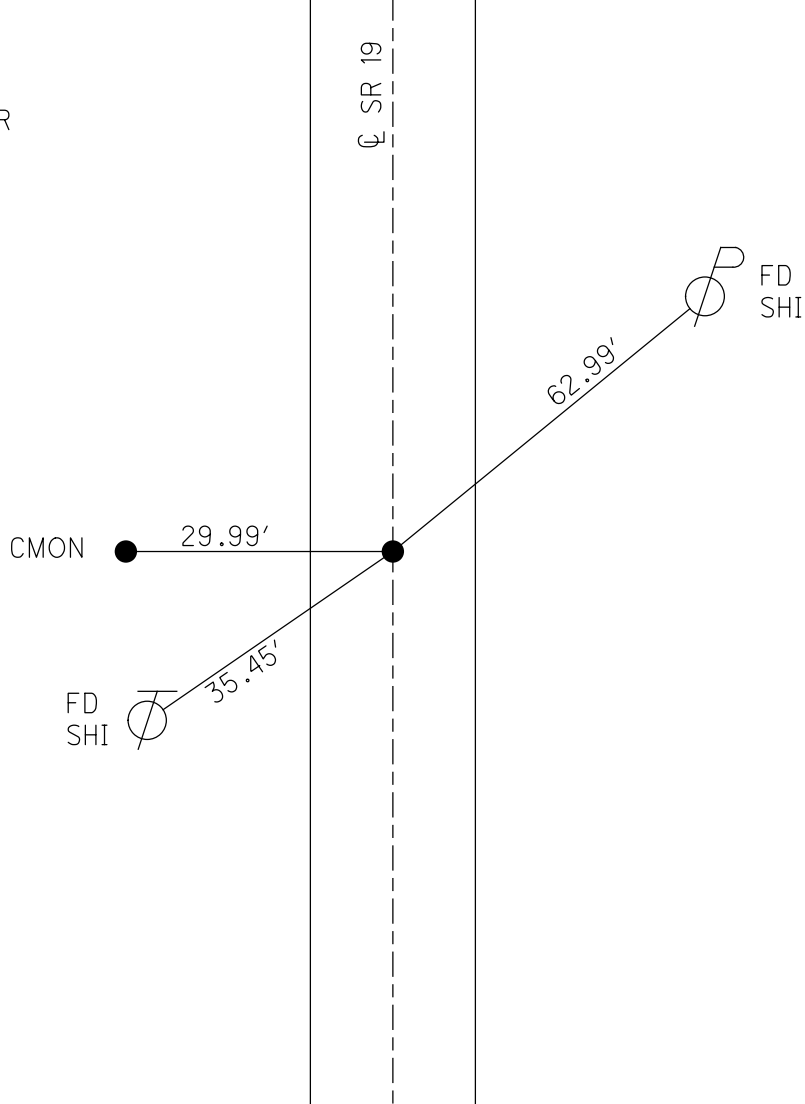
GEOID: 2012A

GRID: NORTHING: 518398.662

EASTING: 1826479.441



RECORD: P.I.
 STA 112+57.40
 $\Delta = 0^{\circ}25' \text{ LT}$
 SET P.K./WASHER
 8-9-1994, CAL
 FD P.K. NAIL
 REF44
 3-5-2019, JFO
 FD P.K. NAIL
 8-22-2019, JMR



O.D.O.T. DISTRICT 2 SURVEY OFFICE

PERSONNEL _____

REFERENCE NO. 44

SHEET 1 OF 26

NOTES Loehrer

H.C. CANTONBURY

R.C. Hermiller

Vogel

Prunty

DATE 6-17-94

WEATHER Hot

TEMP. +95

ROUTE S.R. 19

COUNTY Seneca

TOWNSHIP Scipio

SECTION 33

T. 2 N. R. 16 E.

TYPE MONUMENT P.K./WASHER

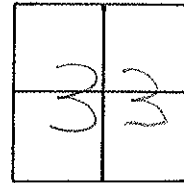
ON SURFACE - BELOW Yes

LEFT - & PAV'T. - RIGHT Yes

12.0 TO Lt. EDGE PAVEMENT

S.L.M. 346 + 71

Set P.K./washer
8-9-94 C.A.L.



REC: P.I. Sta 112+57.40
 $\Delta = 0^{\circ}-25'$ Lt.

CONC. MON.
Re-Rod. 29.99

35.45

Fd Shi
NE/S

62.99

Fd Shi
SW/S

S.R. 19

Q. PAVT.

QD.O.T. DISTRICT 2 SURVEY OFFICE

Sht. ___ of ___

County Seneca S.R. # 19

Date Drawn - 1/11/84 8/19/85

Township Scipio

Weather SUNNY

Section 33 & 34

Temp. 71°

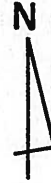
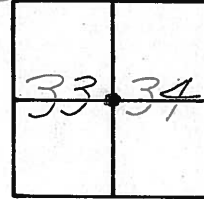
T2N, R16E

Personnel CEONIN

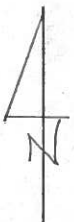
RIPPLE

BARBOUR

GEYMAN



44

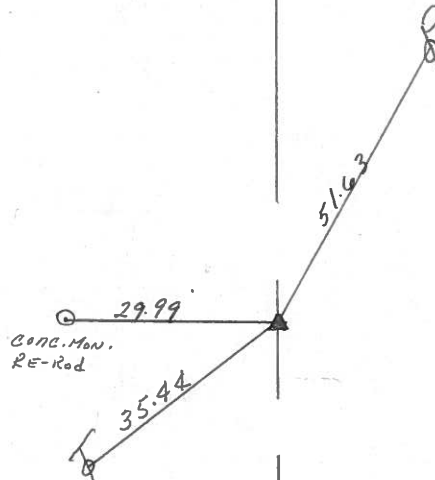


P.I. A = 00° 25' Lt. REC

112 + 57.40

SET P.K. & WASHER AT OP P.K. & WASHER

AT OP P.R. SPIKE



852 #19

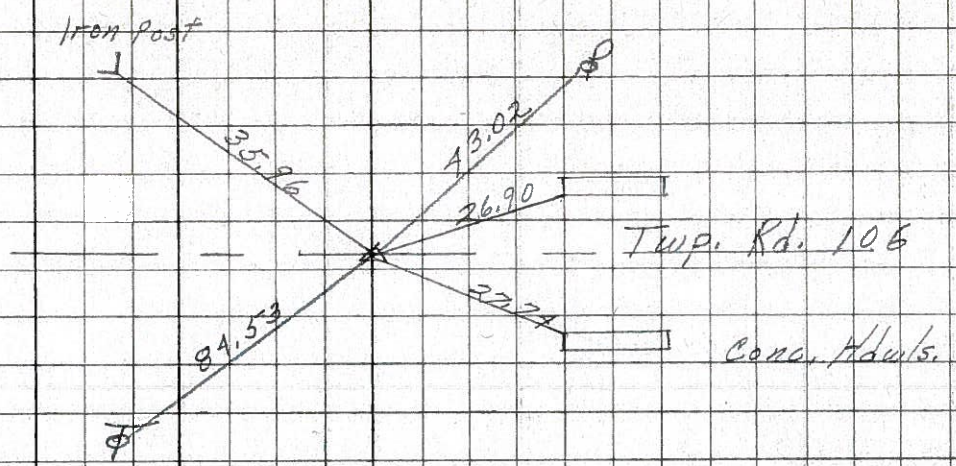
PERSONNEL	TITLE	PERSONNEL	TITLE	COUNTY	DATE	WEATHER	TEMP.
Schneider				Seneca	8-1-69	Cloudy	80°
Mosser				S. R. 19			
Barbour				SEC. U.S. 224-North			
Potts							

DESCRIPTION: Ties for Control Points JOB NO. _____

46

138+97.3
 $\Delta = 0^\circ 04' Pt.$
 R.R. spk. 1/2" down
 set small on top

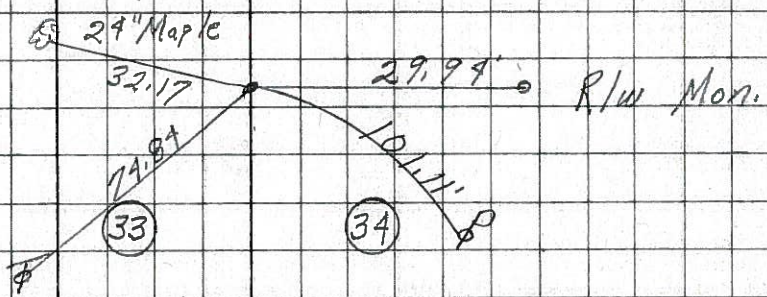
8254



45

127+00
 $\Delta = 0^\circ 00'$
 Fd. R.R. spk 3" down

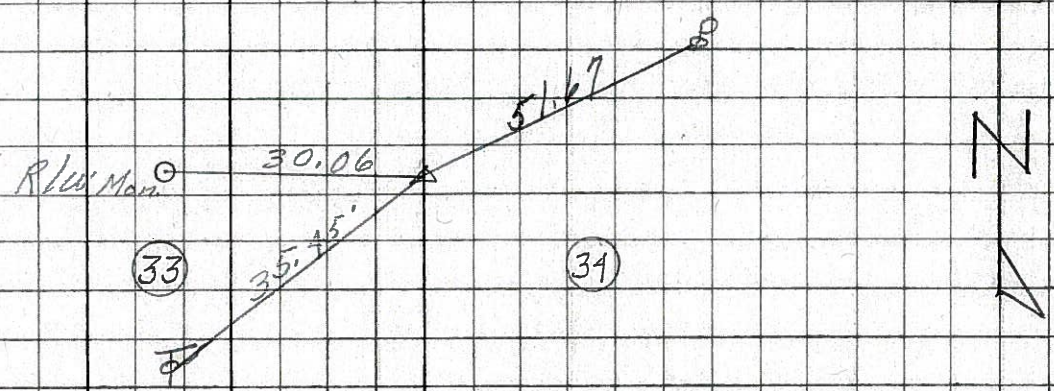
8253



44

112+57.4
 $\Delta = 0^\circ 25' Lt.$
 Fd. R.R. spk.
 3" down

8252



43

$\Delta = 0^\circ 12' Lt.$
 86+16.80
 Inter section
 S.R. 19 & U.S. 224
 Tied in on U.S. 224 Notes

8251

U.S. # 224