

O.D.O.T. DISTRICT 2 SURVEY OFFICE (USE ONLY)

PERSONNEL

REFERENCE NO. 45

SHEET 2 OF 10

NOTES LOEHRKE

DATE 6-17-94

ROUTE SR 19

H.C. CANTERBURY

WEATHER HOT

COUNTY SENECA

R.C. HERMILLER

TEMP. +96

TOWNSHIP SCIPIO

VOGEL, PRUNTY

SECTION 33

DWG BY NIESE PID 107060

T 2 N R 16 E

TYPE MONUMENT P.K./WASHER

ON SURFACE - ~~BELOW~~ ON

OFFSET 0 PAVEMENT ON LT : RT

11.5 TO LT EDGE PAVEMENT

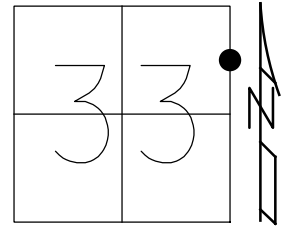
STATION: 361+17

HORIZ.DATUM: NAD83(2011)

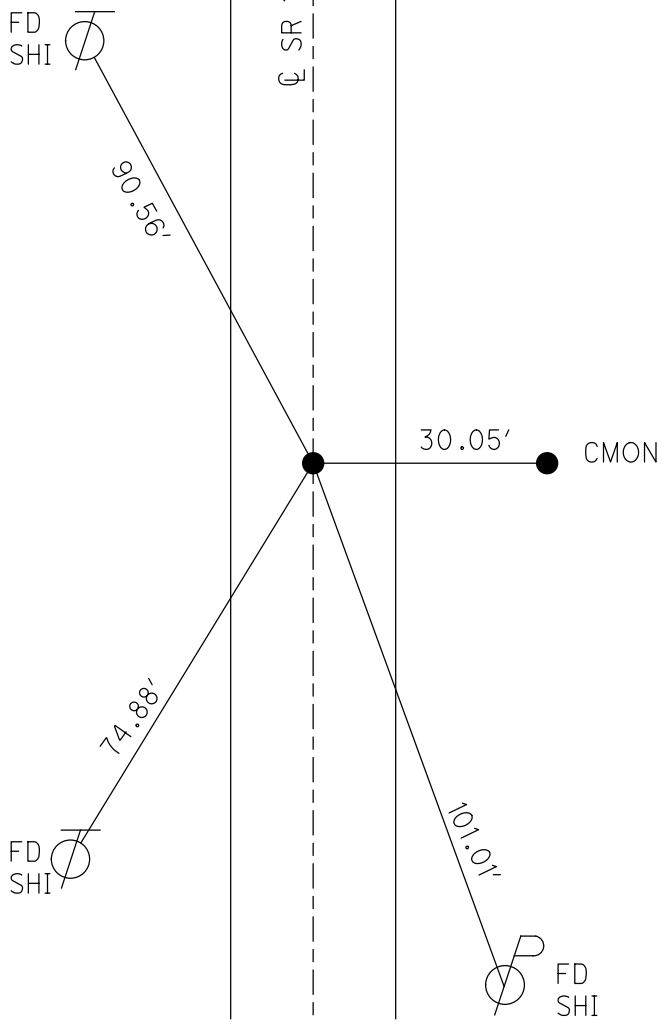
GEOID: 2012A

GRID: NORTHING: 519843.311

EASTING: 1826478.472



RECORD: P.O.T.
 STA 127+00
 SET P.K./WASHER
 8-9-1994, CAL
 FD P.K. NAIL
 REF45
 3-5-2019, JFO
 FD P.K. NAIL
 8-22-2019, JMR



O.D.O.T. DISTRICT 2 SURVEY OFFICE

PERSONNEL _____

REFERENCE NO. 45

SHEET 2 OF 260

NOTES LOEHAKE

H.C. CANTERBURY

R.C. HERMILLER

VOGEL

PRUNTY

DATE 6-17-94

WEATHER HOT

TEMP. +96

ROUTE S.R. 19

COUNTY Seneca

TOWNSHIP Scipio

SECTION 33

T 2 N R 16 E

TYPE MONUMENT P.K. / WASHER

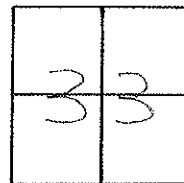
*Set P.K. / washer
8-9-94 C.A.C.*

ON SURFACE - BELOW Yes

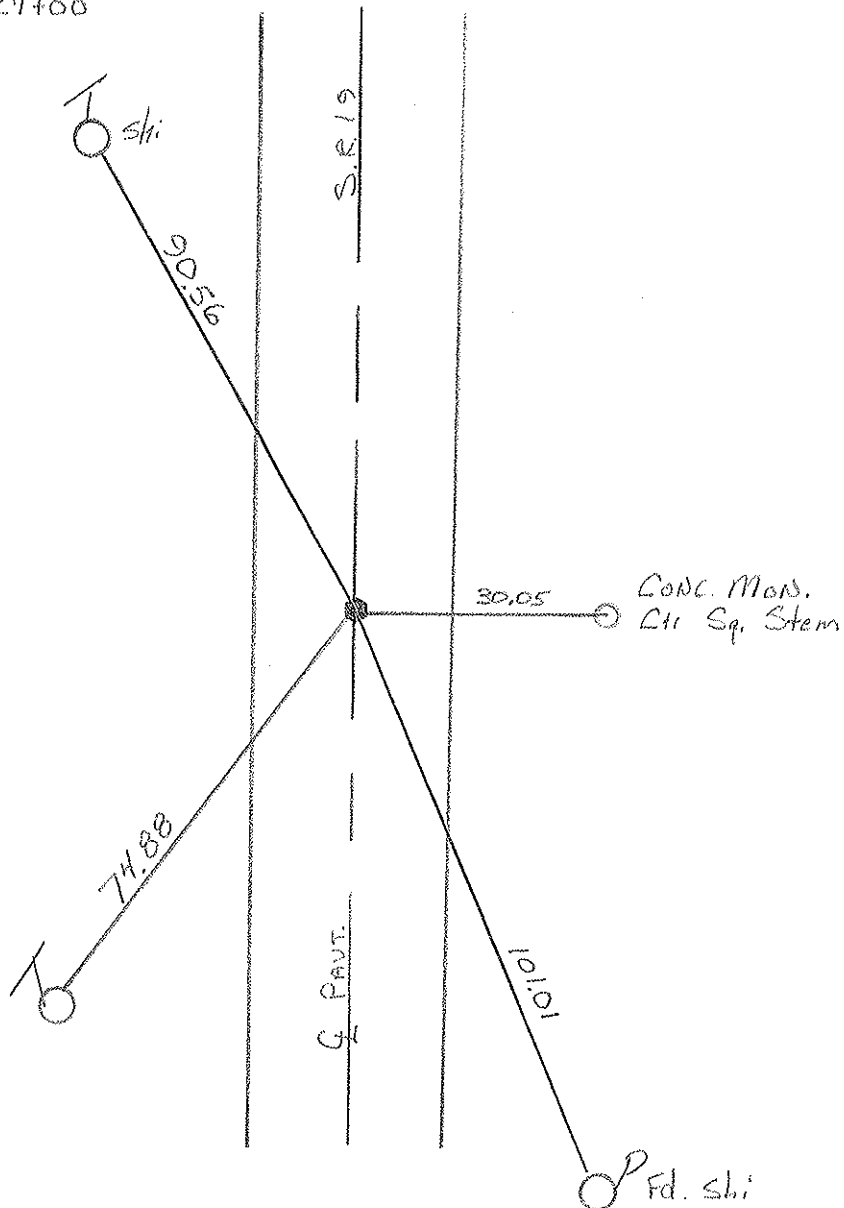
LEFT - & PAV'T. - RIGHT _____

14.5 TO L EDGE PAVEMENT

S.L.M. 361+17



REC. - POT Sta 127+00



Q.D.O.T. DISTRICT 2 SURVEY OFFICE

Sht. ___ of ___

County Seneca S.R. # 19

Date Drawn 11/1/84 8/19/85

Township Scipio

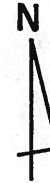
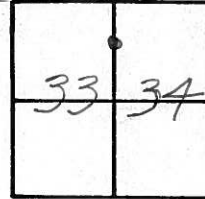
Weather SUNNY

Section 33, 34

Temp. 71°

T2N, R16E

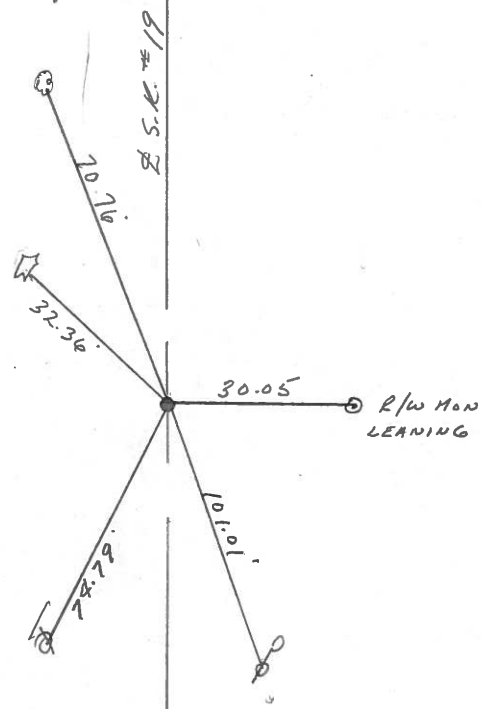
Personnel CROWIN
RIPPLE
GEYMAN
BARBOUR



45



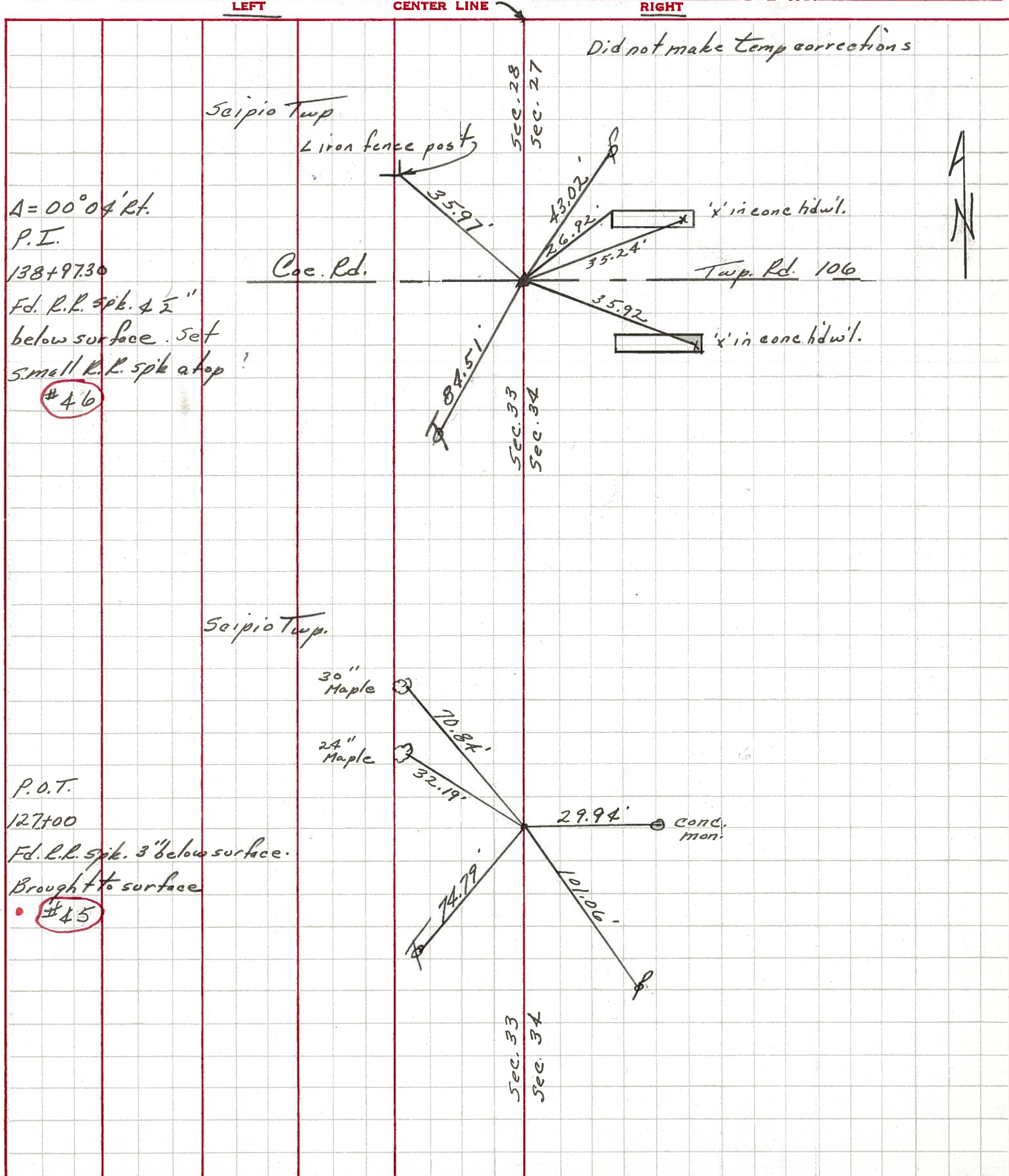
P.O.T.
127+00
SET P.K. & WASHER ATOP P.K. &
WASHER ATOP R.R. SPIKE



PERSONNEL	TITLE	PERSONNEL	TITLE
Ash			
Cronin			
Ripple			
Anderson			

COUNTY Seneca
 S. R. #19
 SEC. H
 WEATHER sunny
 TEMP. 60°

DESCRIPTION Ties for Control Points - Bloomville North
 JOB NO. _____



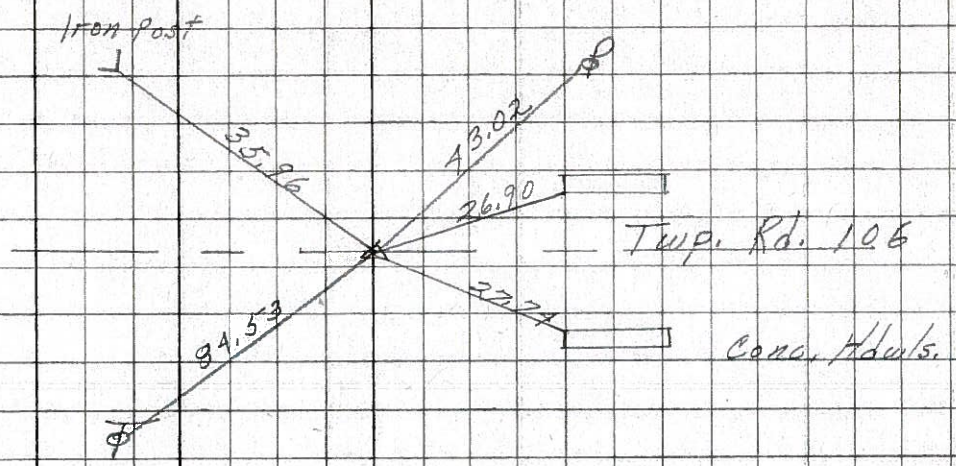
PERSONNEL	TITLE	PERSONNEL	TITLE	COUNTY	DATE	WEATHER	TEMP.
Schneider				Seneca	8-1-69	Cloudy	80°
Mosser				S. R. 19			
Barbour				SEC. U.S. 224-North			
Potts							

DESCRIPTION: Ties for Control Points
 LEFT CENTER LINE RIGHT JOB NO.

46

138+97.3
 $\Delta = 0^\circ 04' \text{ Pt.}$
 R.R. spk. 1/2" down
 set small on top

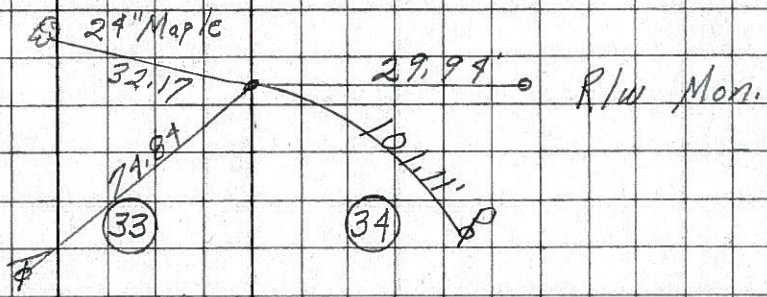
8254



45

127+00
 $\Delta = 0^\circ 00'$
 Fd. R. R. spk 3" down

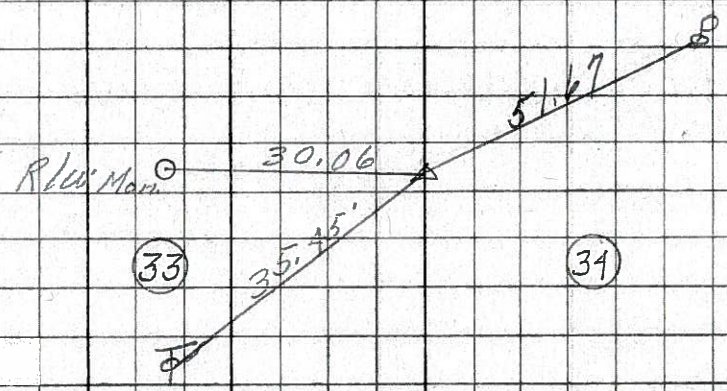
8253



44

112+57.4
 $\Delta = 0^\circ 25' \text{ Lt.}$
 Fd. R. R. spk
 3" down

8252



43

$\Delta = 0^\circ 12' \text{ Lt.}$
 86+16.80
 Inter section
 S.R. 19 & U.S. 224
 Tied in on U.S. 224 Notes

8251

U.S. # 224

