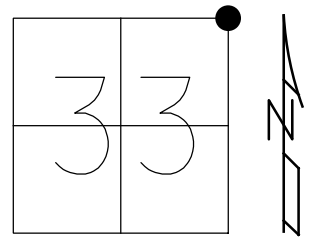


O.D.O.T. DISTRICT 2 SURVEY OFFICE (USE ONLY)

PERSONNEL _____ REFERENCE NO. 46 SHEET 3 OF 10

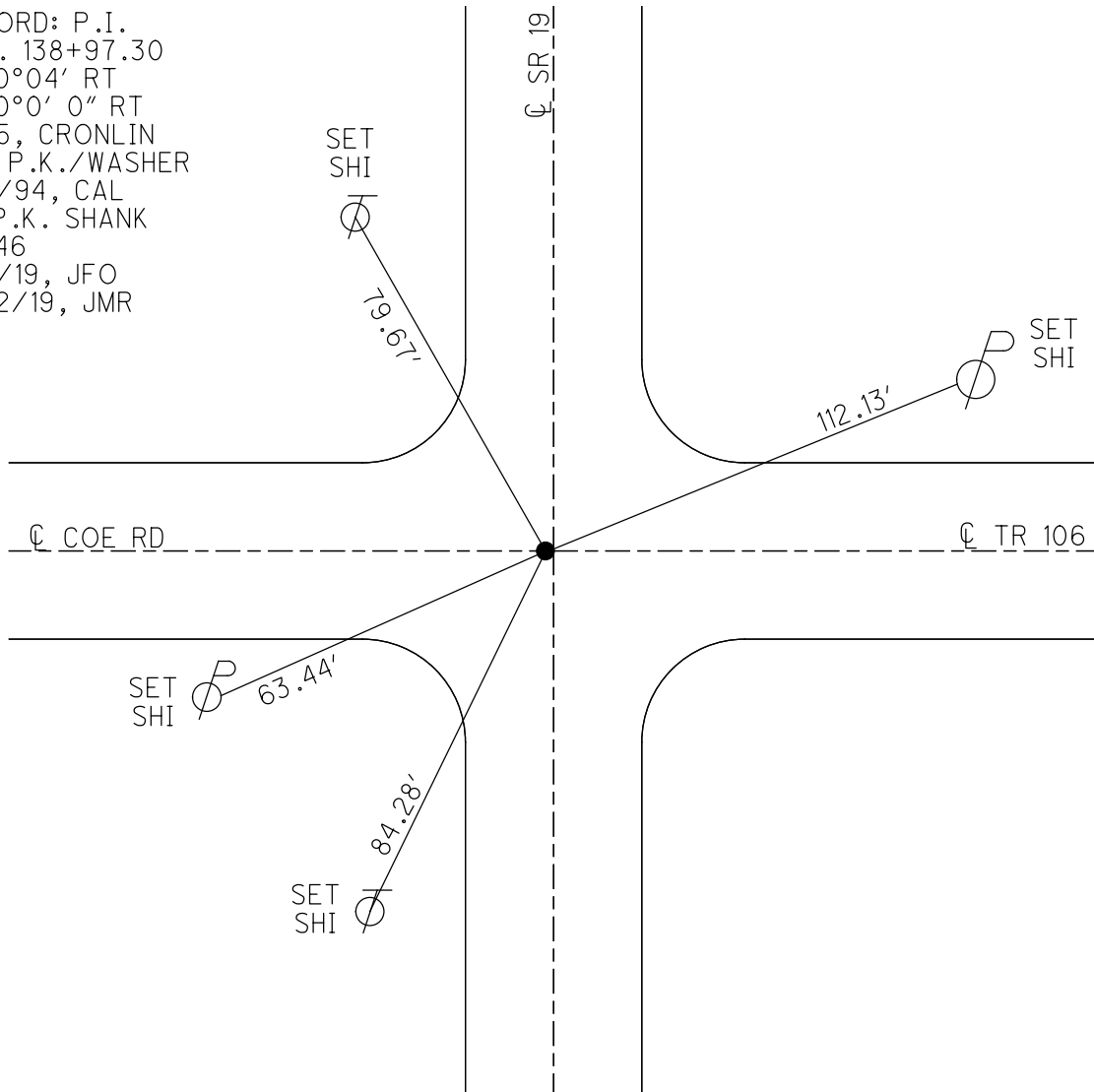
NOTES	<u>ROUSOS</u>	DATE	<u>8/9/2011</u>	ROUTE	<u>SR 19</u>
H.C.	<u>ROUSOS</u>	WEATHER	<u>SUNNY</u>	COUNTY	<u>SENECA</u>
R.C.	<u>HOMAN</u>	TEMP.	<u>75°</u>	TOWNSHIP	<u>SCIPIO</u>
				SECTION	<u>33</u>
				T <u>2</u> N	R <u>16</u> E

TYPE MONUMENT P.K./WASHER
 ON SURFACE - ~~BELOW~~ ON
 LEFT - ☉ PAV'T - ~~RIGHT~~ 0.6'
- TO - EDGE PAVEMENT
 S.L.M. 373+13



GRID: NORTHING: 521040.415 EASTING: 1826478.150

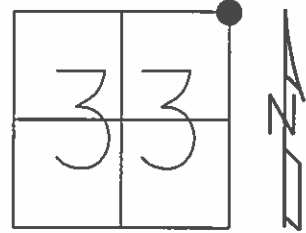
RECORD: P.I.
 STA. 138+97.30
 $\Delta = 0^\circ 04' \text{ RT}$
 $\Delta = 0^\circ 0' 0'' \text{ RT}$
 9/85, CRONLIN
 SET P.K./WASHER
 8/9/94, CAL
 FD P.K. SHANK
 REF46
 3/5/19, JFO
 8/22/19, JMR



O.D.O.T. DISTRICT 2 SURVEY OFFICE (USE ONLY)

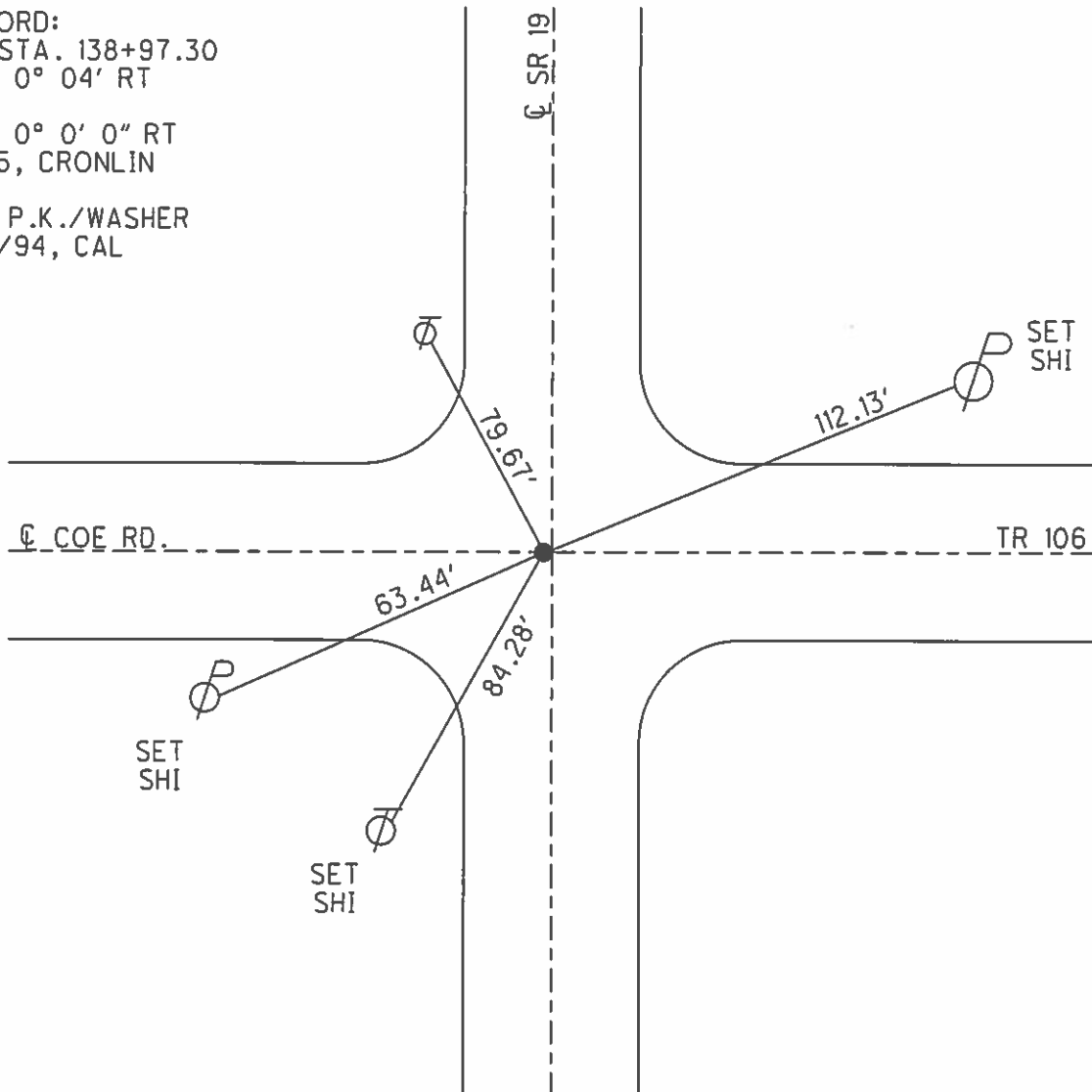
PERSONNEL _____ REFERENCE NO. 46 SHEET 3 OF 26
 NOTES ROUSOS DATE 8/9/2011 ROUTE SR 19
 H.C. ROUSOS WEATHER SUNNY COUNTY SENECA
 R.C. HOMAN TEMP. 75° TOWNSHIP SCIPIO
 _____ SECTION 33
 _____ T 2 N R 16 E

TYPE MONUMENT PK/WASHER
 ON SURFACE - ~~BELOW~~ _____ ON _____
 LEFT - ☉ PAV'T - ~~RIGHT~~ 0.6'
 _____ TO _____ EDGE PAVEMENT
 S.L.M. 373+13



GRID: NORTHING: 521040.507 EASTING: 1826478.103

RECORD:
 P.I. STA. 138+97.30
 $\Delta = 0^\circ 04' RT$
 $\Delta = 0^\circ 0' 0'' RT$
9/85, CRONLIN
 SET P.K./WASHER
8/9/94, CAL



O.D.O.T. DISTRICT 2 SURVEY OFFICE

PERSONNEL

REFERENCE NO. 46

SHEET 3 OF 26

NOTES LOHRKE

H.C. CANTERBURY

R.C. HERMILLER

VOGEL

PRUNTY

DATE 6-17-94

WEATHER Humid

TEMP. +96

ROUTE S.R. 19

COUNTY SENECA

TOWNSHIP Scipio

SECTION 33

T 2 N R 16 E

TYPE MONUMENT P.K. / WASHER

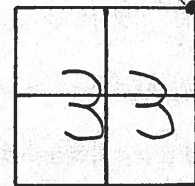
ON SURFACE - BELOW Yes

LEFT- & PAW'T. - RIGHT 0.6'

TO EDGE PAVEMENT

S.L.M. 373+13

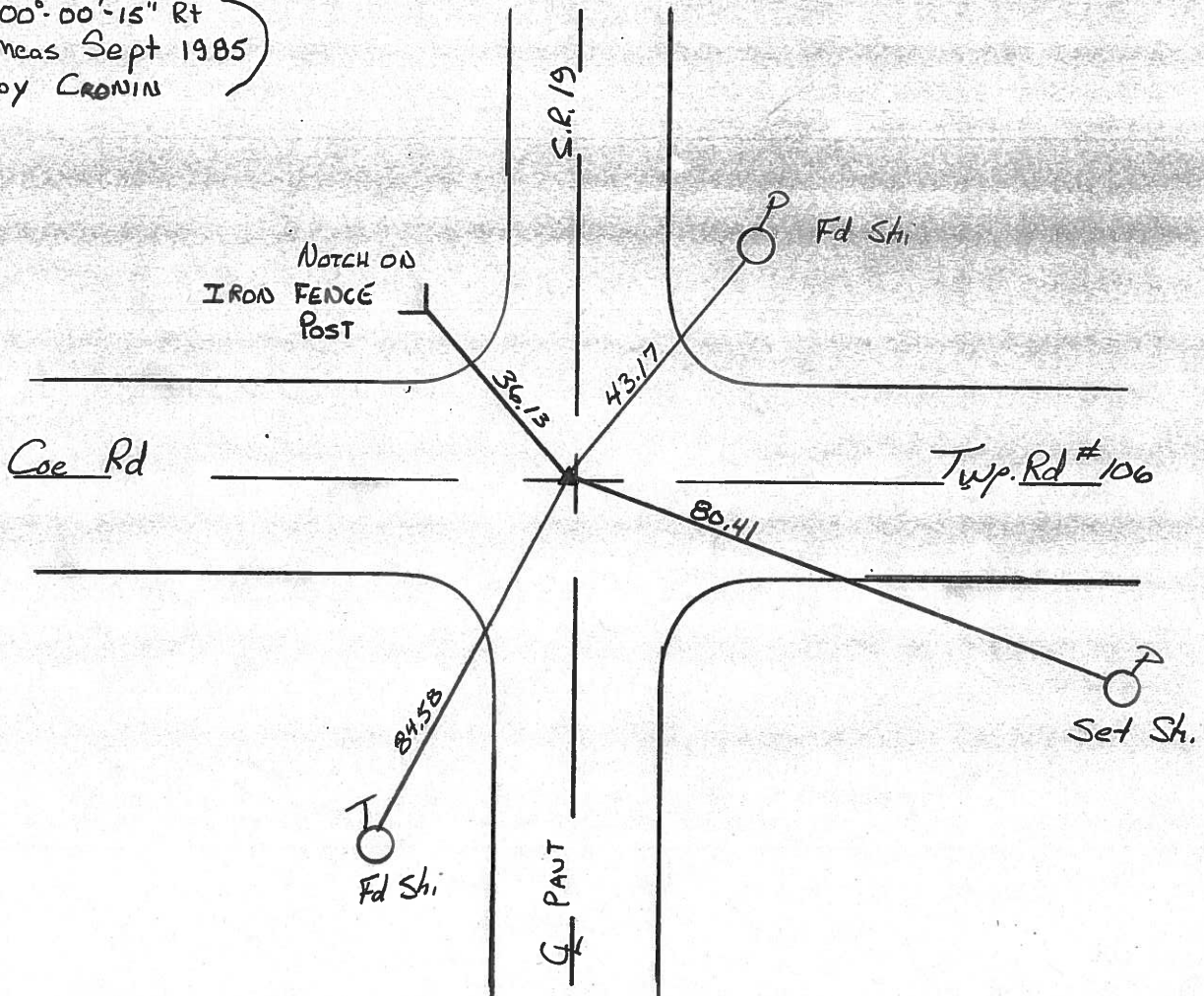
Set P.K. / Washer
8-9-94 C.A.L.



Rec. P.I. Sta 138+97.30

$\Delta = 00^{\circ} - 04' \text{ Rt}$

$\Delta = 00^{\circ} - 00' - 15'' \text{ Rt}$
meas Sept 1985
by CROWIN



County Seneca S.R. #19

Date Drawn 1/11/84 8/19/85

Township Scipio

Weather SUNNY

Section 27, 28, 33, 34

Temp. 71°

T2N, R16E

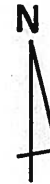
Personnel CRONIN

RIPPLE

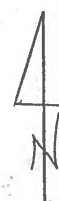
BEEBOUR

GEYMAN

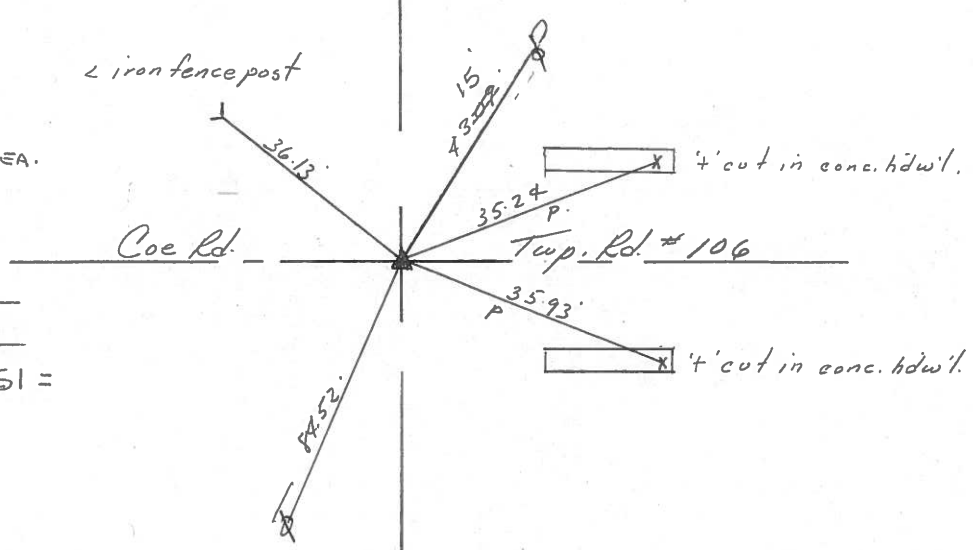
28	27
33	34



46



$\Delta = 00^{\circ}00'15''$ Rt. MEA.
 P.I. $\Delta = 00^{\circ}04'$ Lt. Rec.
138+97.30
 P.K. WASHER ATOP R.R. SPIKE
ATOP R.R. SPIKE
 S.L.M. STA. 373+89.51 =
 (138+97.30 OLD STA.)



E.S.R. 4/197

PERSONNEL TITLE PERSONNEL TITLE

Ash
Cronin
Ripple
Anderson

COUNTY Seneca

S. R. #19

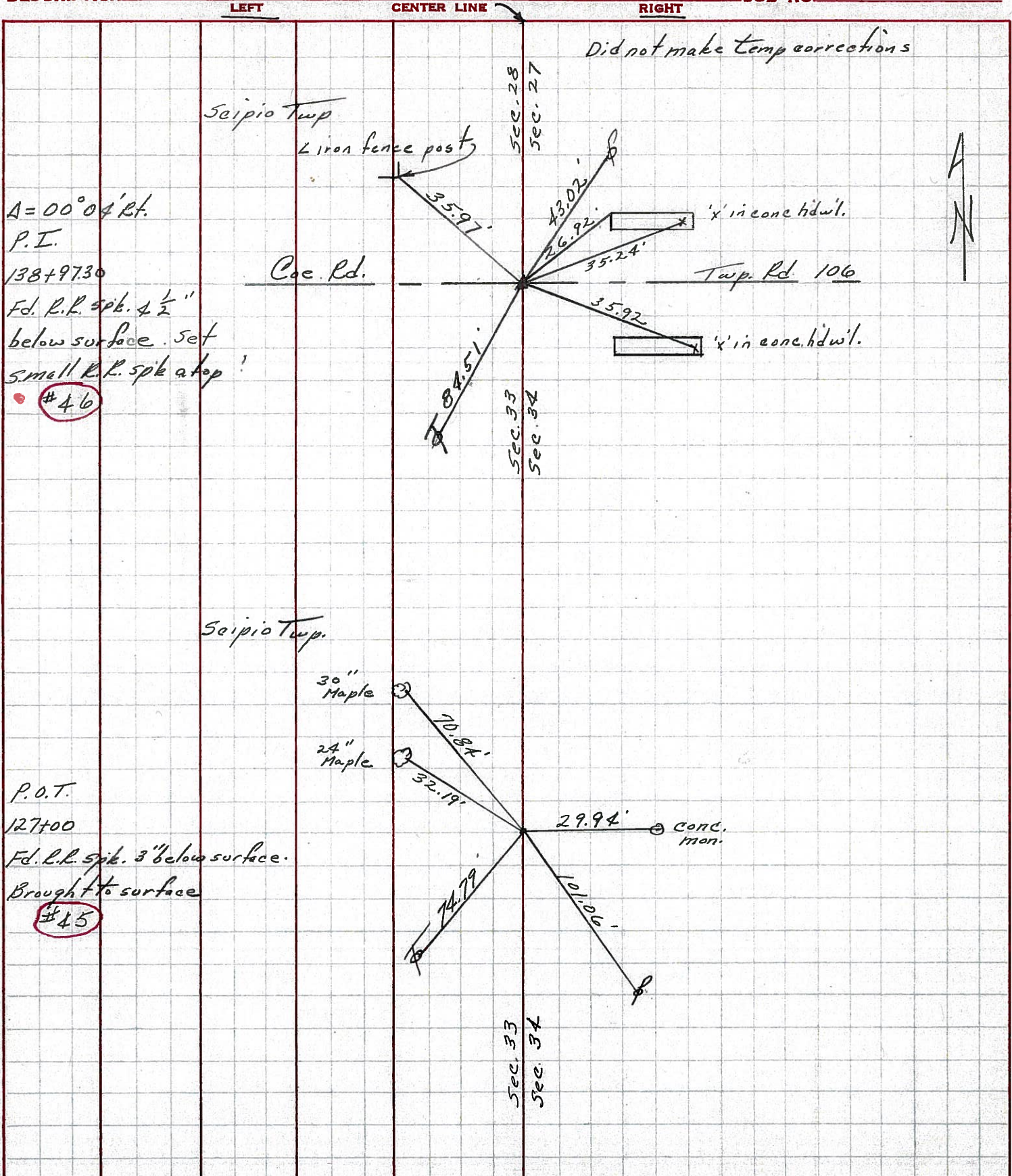
WEATHER sunny

SEC. H

TEMP. 60°

DESCRIPTION Ties for Control Points - Bloomville North

JOB NO.



PERSONNEL TITLE PERSONNEL TITLE

COUNTY Seneca DATE 8-1-69

Schneider

S. R. 19 WEATHER Cloudy

Mosser

SEC. U.S. 224-North TEMP. 80°

Barbour

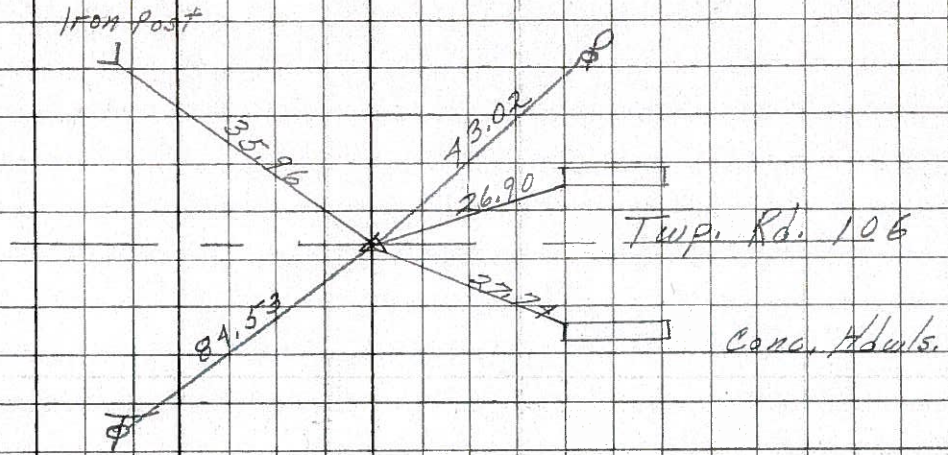
Potts

DESCRIPTION Ties for Control Points LEFT CENTER LINE RIGHT JOB NO.

46

138+97.3
 $\Delta = 0^\circ 04' \text{ Pt.}$
 R.R. spk. 7 1/2" down
 set small on top

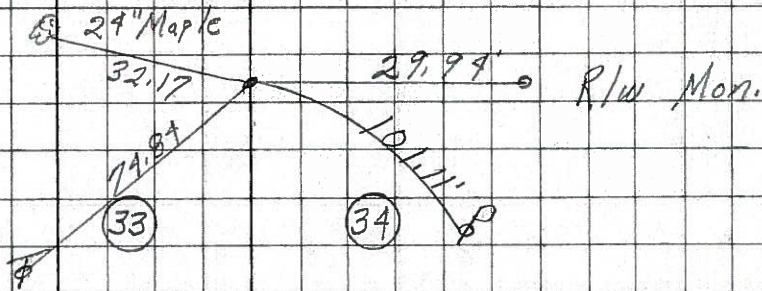
8254



45

127+00
 $\Delta = 0^\circ 00'$
 Fd. R.R. spk 3" down

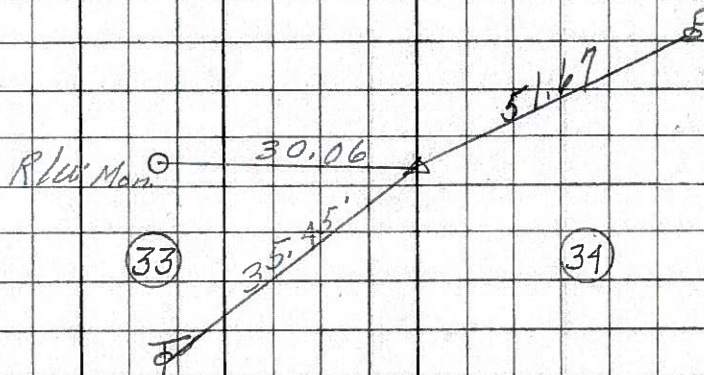
8253



44

112+57.4
 $\Delta = 0^\circ 25' \text{ Lt.}$
 Fd. R.R. spk 3" down

8252



43

$\Delta = 0^\circ 12' \text{ Lt.}$
 86+16.80
 Inter section
 S.R. 19 & U.S. 224
 Tied in on U.S. 224 Notes

8251

U.S. #224

