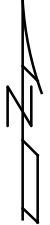
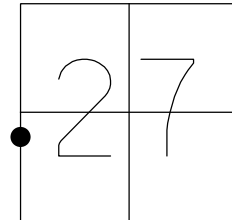


O.D.O.T. DISTRICT 2 SURVEY OFFICE (USE ONLY)

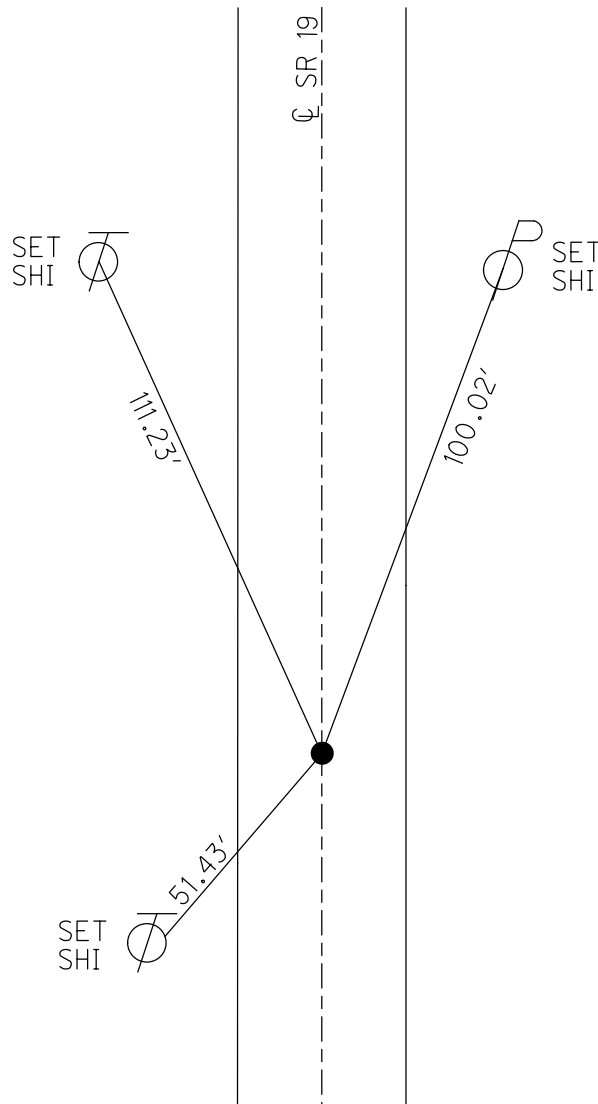
PERSONNEL \_\_\_\_\_ REFERENCE NO. 47 SHEET 4 OF 10  
 NOTES ROUSOS DATE 8/9/2011 ROUTE SR 19  
 H.C. ROUSOS WEATHER SUNNY COUNTY SENECA  
 R.C. HOMAN TEMP. 72° TOWNSHIP SENECA  
 \_\_\_\_\_ SECTION 27  
 \_\_\_\_\_ T 2 N R 16 E

TYPE MONUMENT P.K./WASHER  
 ON SURFACE - ~~BELOW~~ ON  
 LEFT - ☉ PAV'T - RIGHT ON  
11.5 TO RT EDGE PAVEMENT  
 S.L.M. 395+20



GRID: NORTHING: 523241.551 EASTING: 1826477.707

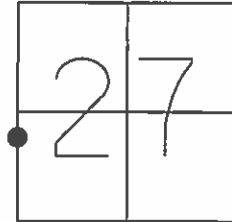
RECORD: P.O.T.  
 STA. 161+00  
 FD P.K./WASHER  
 6/17/94  
 SET P.K./WASHER  
 8/9/94, CAL  
 FD P.K. SHANK  
 REF47  
 3/5/19, JFO  
 FD P.K. NAIL  
 8/22/19, JMR



O.D.O.T. DISTRICT 2 SURVEY OFFICE (USE ONLY)

PERSONNEL \_\_\_\_\_ REFERENCE NO. 47 SHEET 4 OF 26  
 NOTES ROUSOS DATE 8/9/2011 ROUTE SR 19  
 H.C. ROUSOS WEATHER SUNNY COUNTY SENECA  
 R.C. HOMAN TEMP. 72° TOWNSHIP SENECA  
 \_\_\_\_\_ SECTION 27  
 \_\_\_\_\_ T 2 N R 16 E

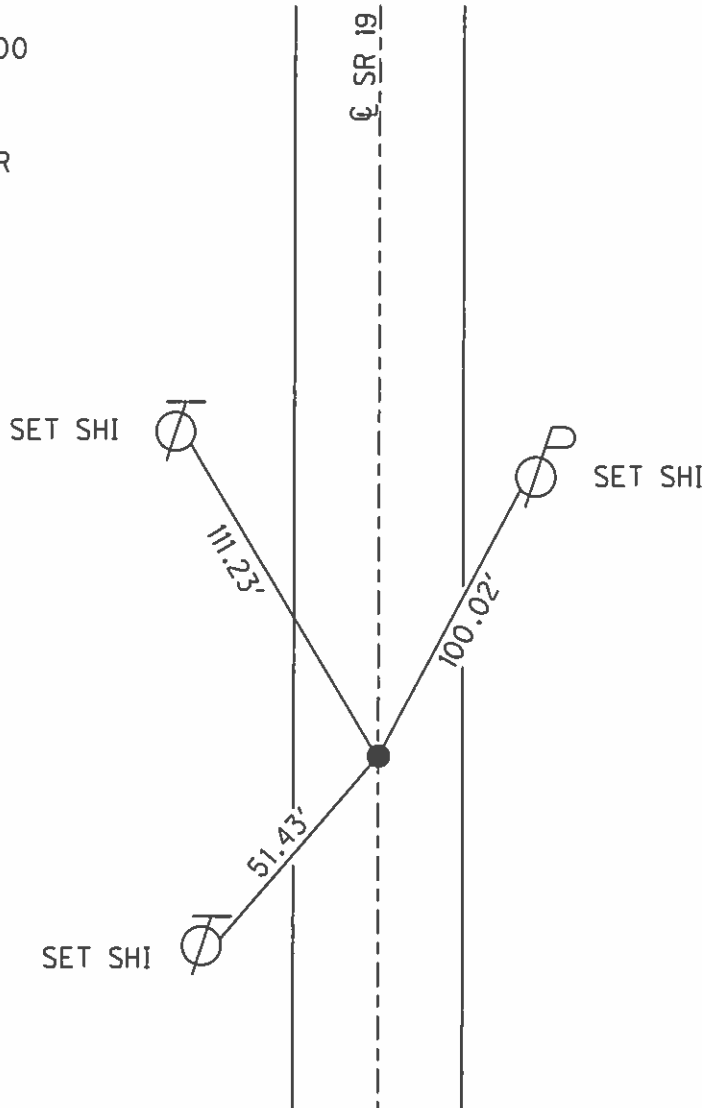
TYPE MONUMENT P.K./WASHER  
 ON SURFACE - ~~BELOW~~ ON  
 LEFT - ☉ PAV'T - RIGHT ON  
11.5 TO RT. EDGE PAVEMENT  
 S.L.M. 395+20



GRID: NORTHING: 523241.499 EASTING: 1826477.661

RECORD:  
 P.O.T. STA. 161+00

FD P.K./WASHER  
 6/17/94  
 SET P.K./WASHER  
 8/9/94, CAL



# O.D.O.T. DISTRICT 2 SURVEY OFFICE

PERSONNEL

REFERENCE NO. 47

SHEET 4 OF 26

NOTES Loehrke

H.C. CANTERBURY

DATE 6-17-94

ROUTE S.R. 19

R.C. HERMILLER

WEATHER Humid

COUNTY SENECA

VOGEL

TEMP. +95

TOWNSHIP Scipio

SECTION 27

T2 NR 16 E

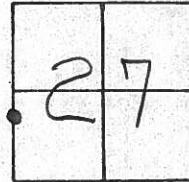
TYPE MONUMENT P.K. / WASHER Set P.K./washer

ON SURFACE - BELOW Yes 8-9-94 C.A.C.

LEFT - C PAV'T. - RIGHT Yes

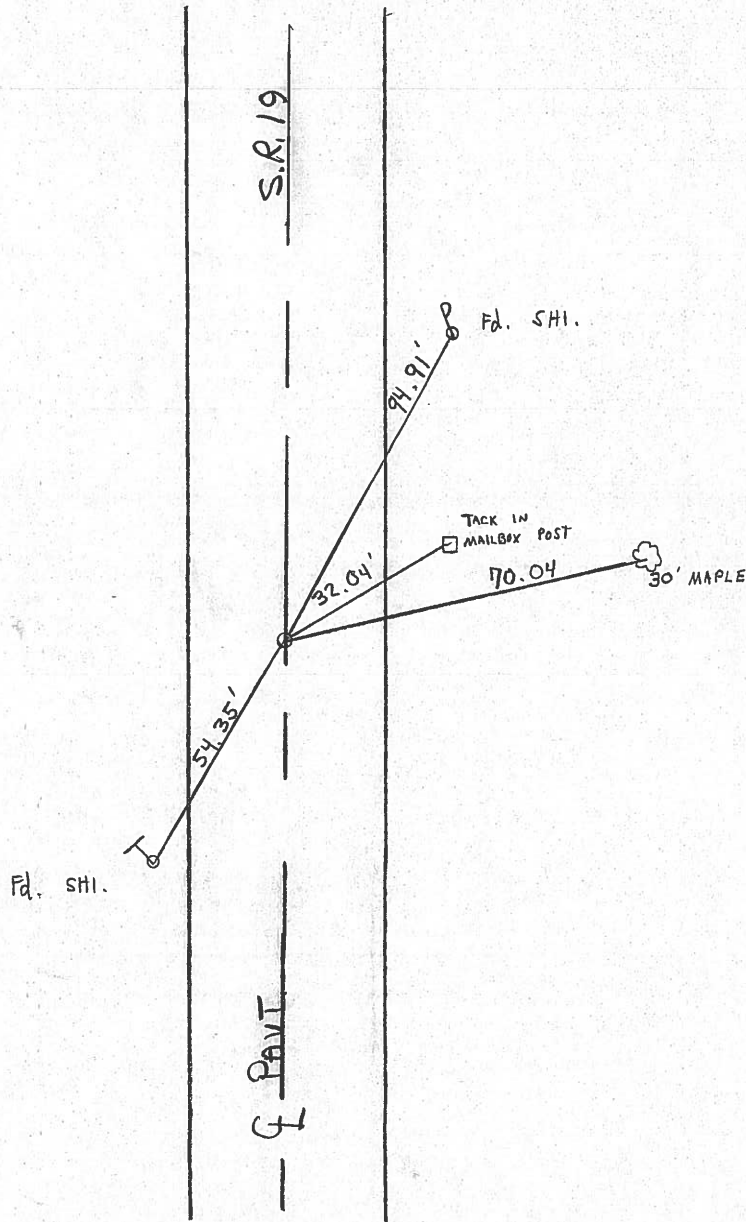
11.5 TO RT EDGE PAVEMENT

S.L.M. 395+20



RECORD P.O.T.

Sta 161+00



Q.D.O.T. DISTRICT 2 SURVEY OFFICE

Sht.      of     

County Seneca S.R. 19

Date Drawn 11/1/84 8/19/85

Township Scipio

Weather SUNNY

Section 27 E 28

Temp. 73°

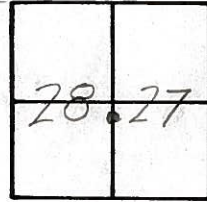
T2N, R16E

Personnel CROWIN

RIPPLE

BARBOR

GEYMAN



47

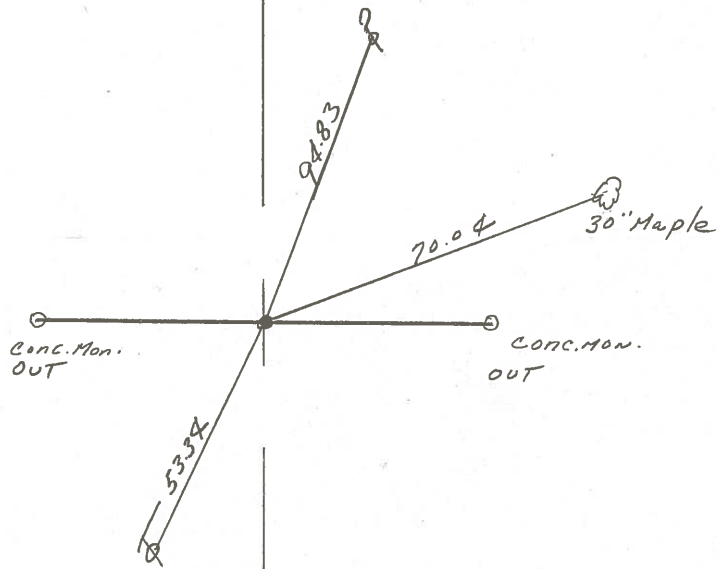


P.O.T

161+00

SET P.K. & WASHER ATOP P.K.

WASHER ATOP SPIKE ATOP P.K., S.P.K.



S.R. # 19

PERSONNEL TITLE PERSONNEL TITLE

COUNTY Seneca

Ash

Cranin

Ripple

Anderson

Vinson

S. R. #19

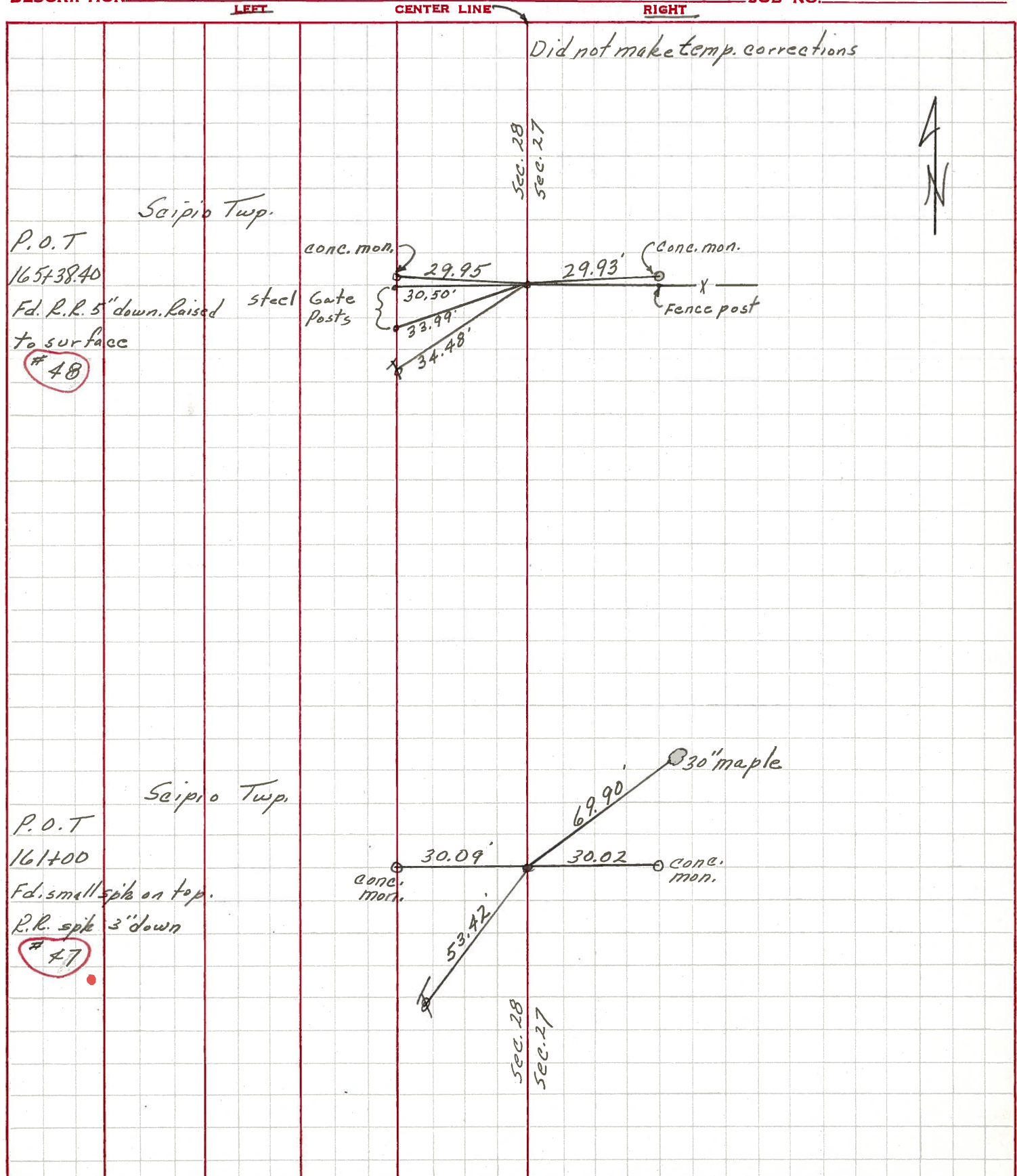
SEC. H

WEATHER sunny

TEMP. 60°

DESCRIPTION Ties for Control Points - Bloomville North

JOB NO.



PERSONNEL TITLE PERSONNEL TITLE

Schneider \_\_\_\_\_ COUNTY Seneca DATE 8-1-69  
 Mosser \_\_\_\_\_ S. R. 19 WEATHER Cloudy  
 Barbour \_\_\_\_\_ SEC. US224 - North TEMP. 80°  
 Potts \_\_\_\_\_

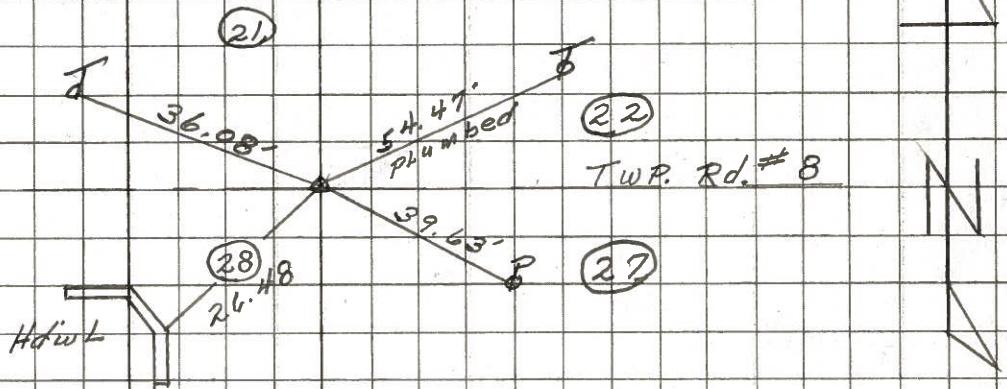
DESCRIPTION Ties for Control Points JOB NO.

LEFT CENTER LINE RIGHT

50

STA. 191+80.50  
 $\Delta = 0^{\circ}05' \text{ LT}$   
 SET MINE SPK  
 ON SURFACE

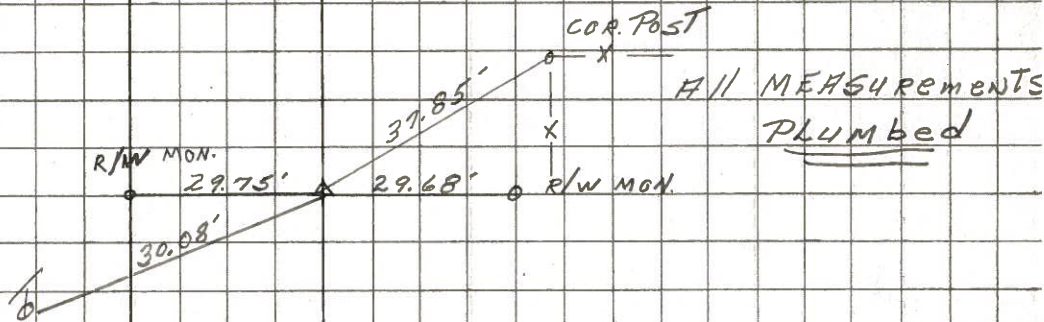
8258



49

STA. 173+00  
 $\Delta = 0^{\circ}00'$   
 R.R. SPK.  
 3" DOWN

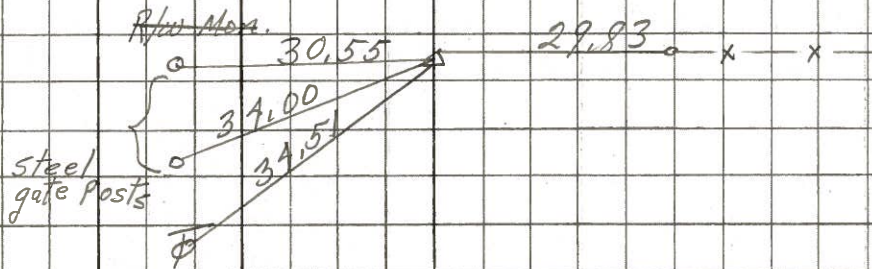
8257



48

165+38.40  
 $\Delta = 0^{\circ}0'$   
 R.R. spk.  
 4' DOWN

8256



47

161+00  
 $\Delta = 0^{\circ}00'$   
 set small spk.  
 on top

8255

