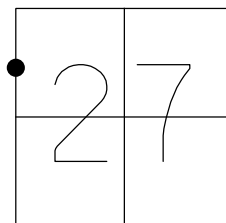


O.D.O.T. DISTRICT 2 SURVEY OFFICE (USE ONLY)

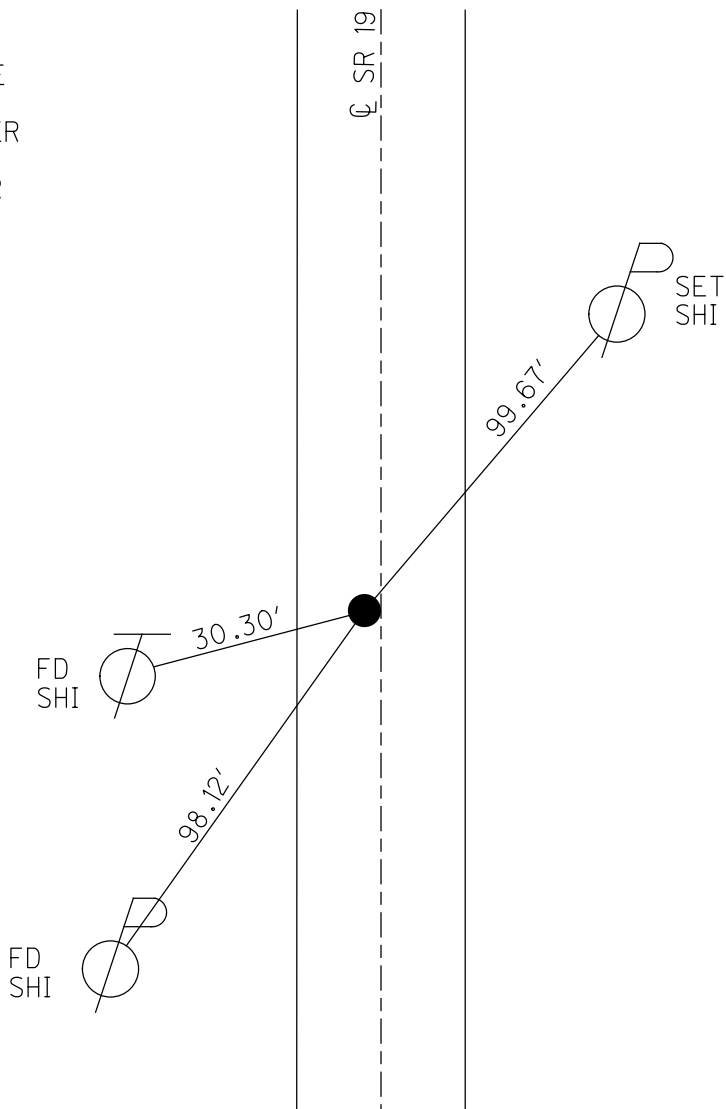
PERSONNEL _____ REFERENCE NO. 49 SHEET 6 OF 10
 NOTES ROUSOS DATE 8/9/2011 ROUTE SR 19
 H.C. ROUSOS WEATHER SUNNY COUNTY SENECA
 R.C. HOMAN TEMP. 72° TOWNSHIP SCIPIO
 _____ SECTION 27
 _____ T 2 N R 16 E

TYPE MONUMENT LG. R.R.SPIKE
~~ON SURFACE~~ - BELOW 4"
 LEFT - CL PAV'T - ~~RIGHT~~ 1.4'
10.3' TO LT EDGE PAVEMENT
 S.L.M. 407+20



GRID: NORTHING: 524441.732 EASTING: 1826476.687

RECORD: P.O.T.
 STA. 173+00
 FD LG.R.R.SPIKE
 6/17/94
 SET P.K./WASHER
 8/9/94, CAL
 FD P.K./WASHER
 REF49
 3/5/19, JFO
 FD P.K. NAIL
 8/22/19, JMR



O.D.O.T. DISTRICT 2 SURVEY OFFICE (USE ONLY)

PERSONNEL _____ REFERENCE NO. 49 SHEET 6 OF 26
 NOTES ROUSOS DATE 8/9/2011 ROUTE SR 19
 H.C. ROUSOS WEATHER SUNNY COUNTY SENECA
 R.C. HOMAN TEMP. 72° TOWNSHIP SCIPIO
 _____ SECTION 27
 _____ T 2 N R 16 E

TYPE MONUMENT LG. R.R.SPIKE

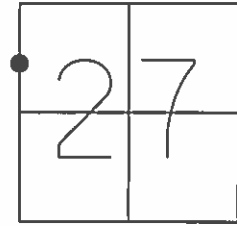
~~ON SURFACE~~ - BELOW 4"

LEFT - ☉ PAV'T - ~~RIGHT~~ 1.4'

10.3' TO LT. EDGE PAVEMENT

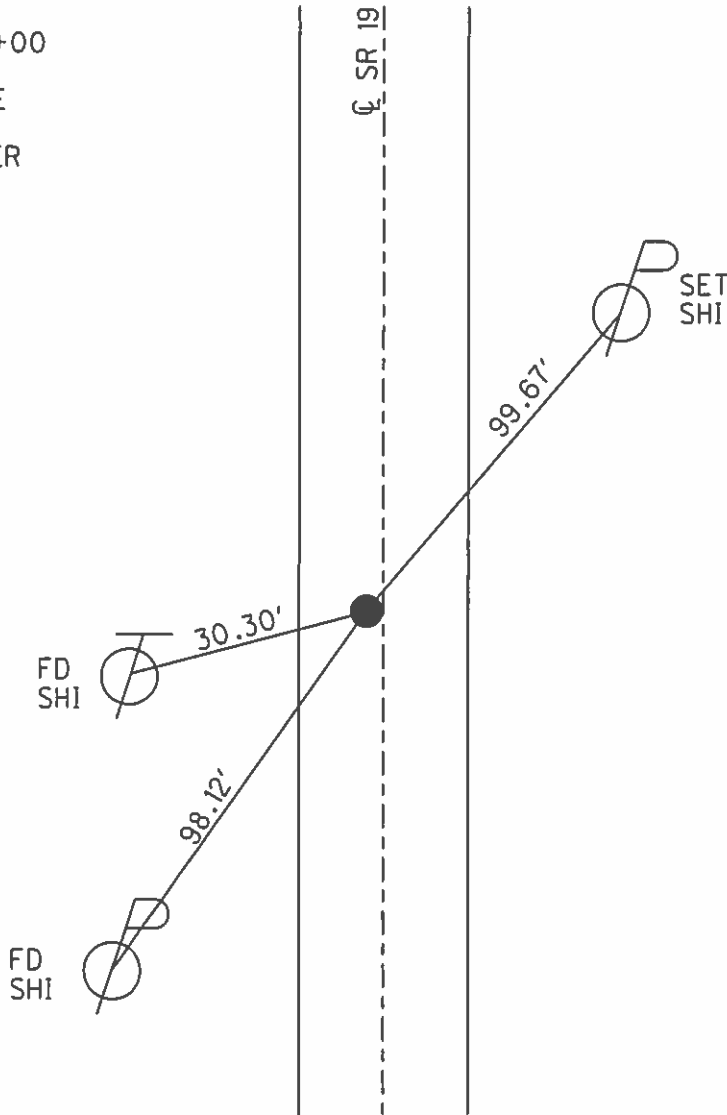
S.L.M. 407+20

GRID: NORTHING: 524441.732 EASTING: 1826476.687



RECORD:
P.O.T.STA. 173+00

FD LG.R.R.SPIKE
6/17/94
SET P.K./WASHER
8/9/94, CAL



O.D.O.T. DISTRICT 2 SURVEY OFFICE

PERSONNEL

REFERENCE NO. 49

SHEET 6 OF 26

NOTES Loehrke

H.C. Canterbury

DATE 6-17-94

ROUTE S.R. 19

R.C. Hermiller

WEATHER Humid

COUNTY SENECA

Vogel

TEMP. +95°

TOWNSHIP Scipio

SECTION 27

T 2 N R 16 E

TYPE MONUMENT Lg RR Spike

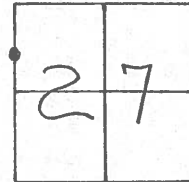
*Set P.K. / washer
8-9-94 C.A.L.*

ON SURFACE - BELOW 4" Deep

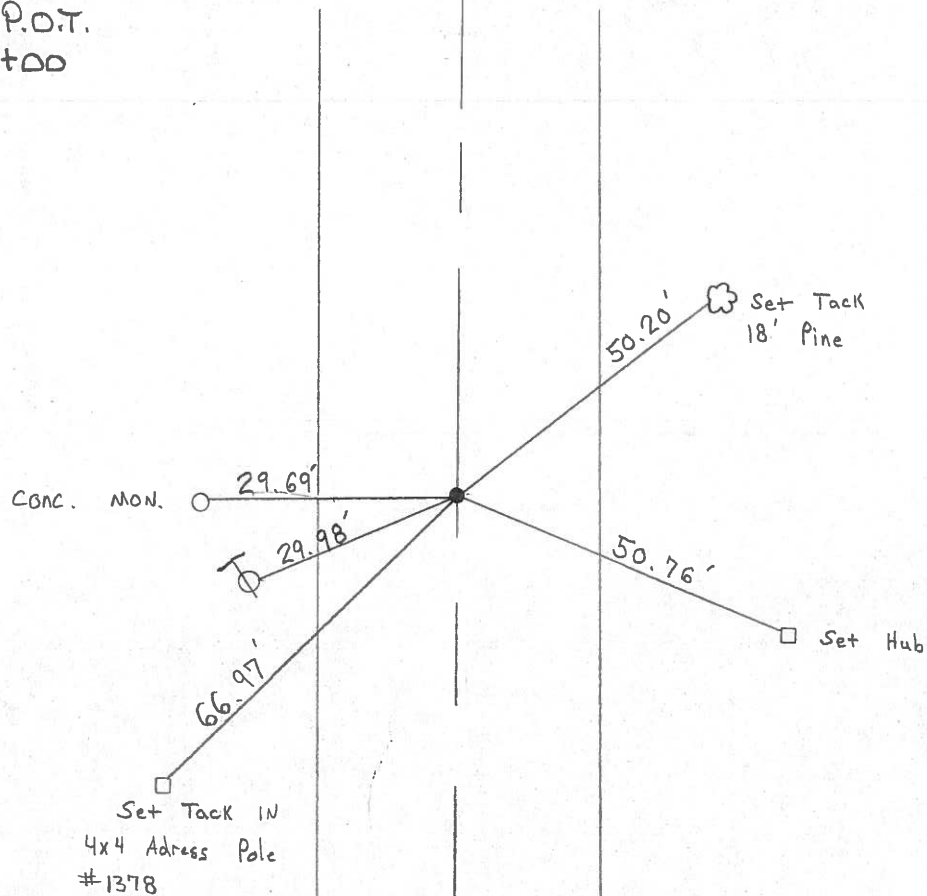
LEFT - ¢ PAV'T. - RIGHT 1.4" Lt &

10.3 TO Lt. EDGE PAVEMENT

S.L.M. 407 + 20



RECORD P.O.T.
Sta 173+00



19
S.R.

Q.D.O.T. DISTRICT 2 SURVEY OFFICE

SHEET _____ OF _____

County Seneca S.R. # 19

Date Drawn 1/1/84 9/3/85

Township Scipio

Weather SUNNY

Section 27 E 28

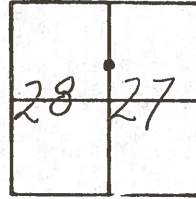
Temp. 85°

T2N, R16E

Personnel CROWIN

RIPPLE

GEYMAN



49



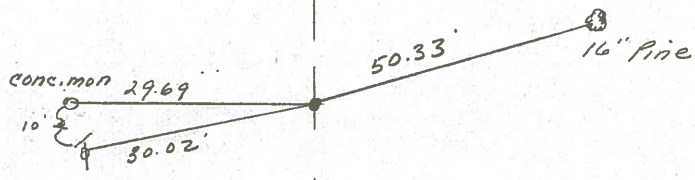
P.O.T.

173+00

SET P.K. & WASHER ATOP P.K. &

WASHER ATOP R.R. SPIKE

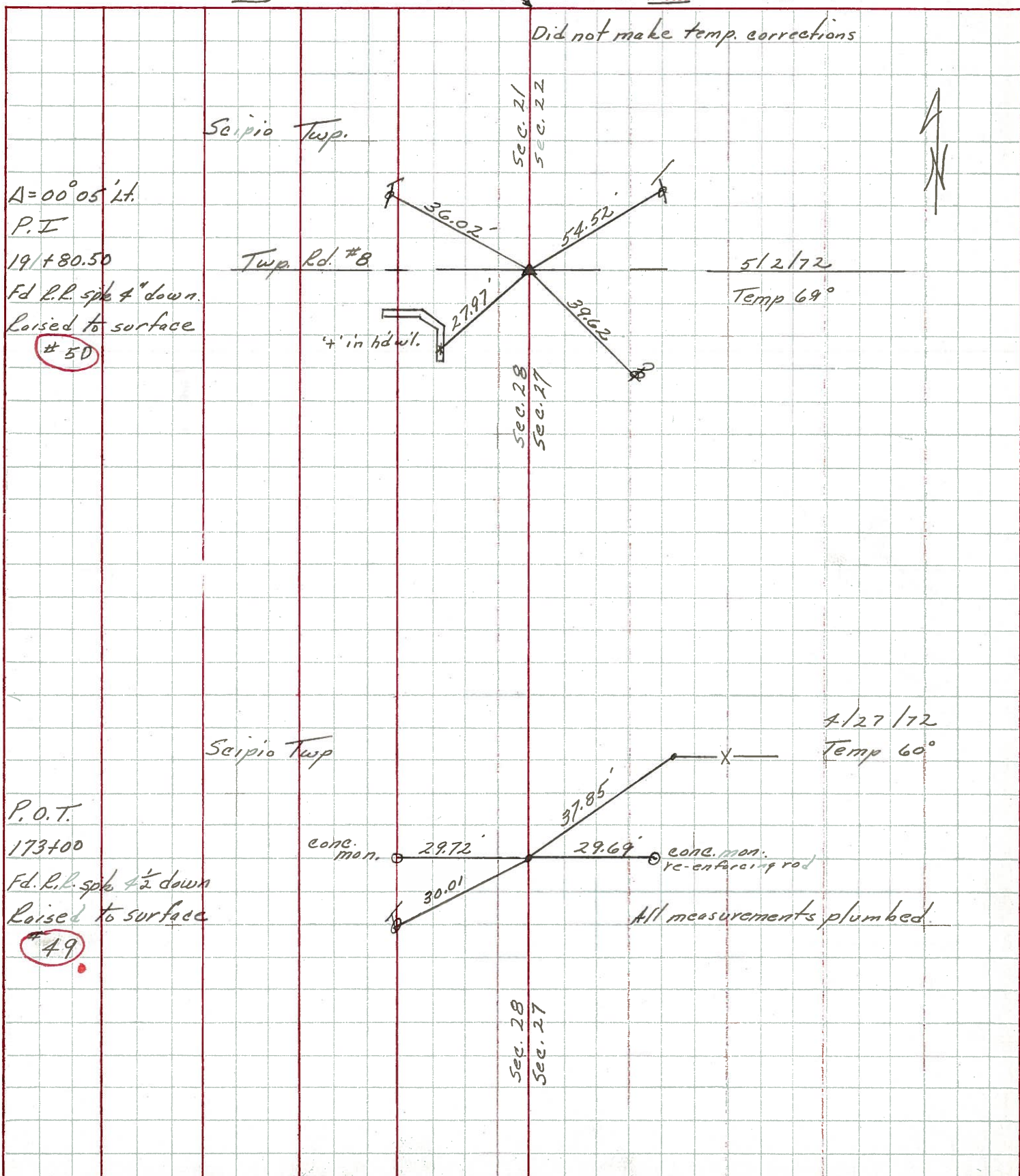
1' LT. & PAUT.



S.R. #19

PERSONNEL	TITLE	PERSONNEL	TITLE	COUNTY	DATE	WEATHER	TEMP.
Ash				Seneca	5/30/72		
Cranin				S. R. #19			
Ripple				SEC. H			
Anderson		Vinson					

DESCRIPTION Ties for Control Points Bloomville North JOB NO. _____



$\Delta = 00^{\circ}05' Lt.$
 P.I
 19/ + 80.50
 Fd. R.L. spike 4" down.
 Raised to surface
 #50

P.O.T.
 173+00
 Fd. R.L. spike 4 1/2" down
 Raised to surface
 #49

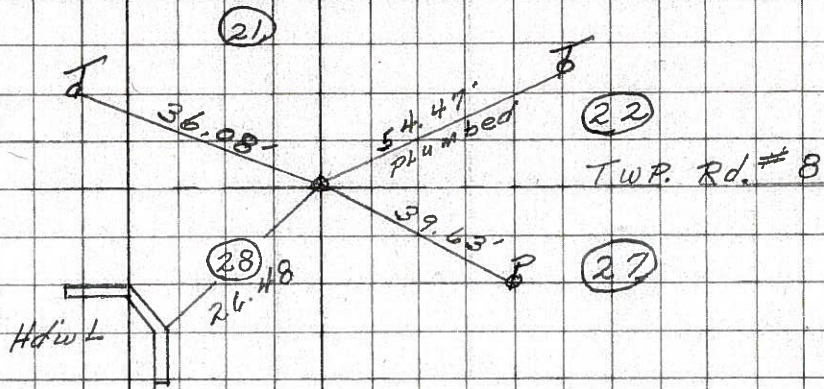
PERSONNEL	TITLE	PERSONNEL	TITLE	COUNTY	DATE
Schneider				Seneca	8-1-69
Mosser				S. R. 19	WEATHER Cloudy
Barbour				SEC. 4.5224 - North	TEMP. 80°
Potts					

DESCRIPTION Ties for Control Points JOB NO. _____

50

STA. 191+80.50
 $\Delta = 0^{\circ}05' \text{ LT}$
 SET MINE SPK
 ON SURFACE

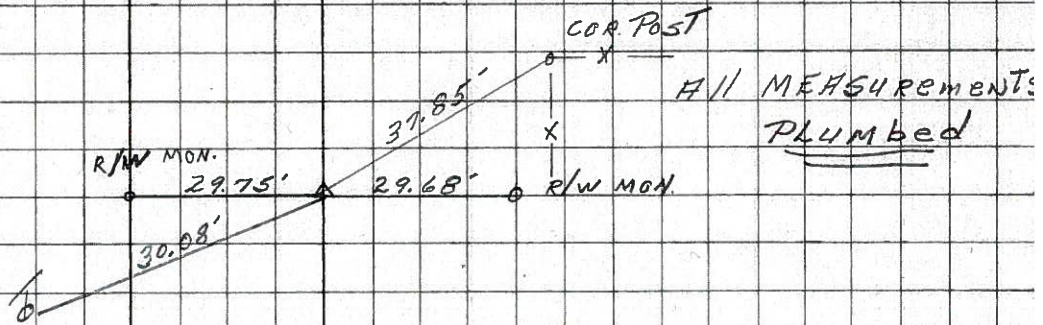
8258



49

STA. 173+00
 $\Delta = 0^{\circ}00'$
 R.R. SPK.
 3' DOWN

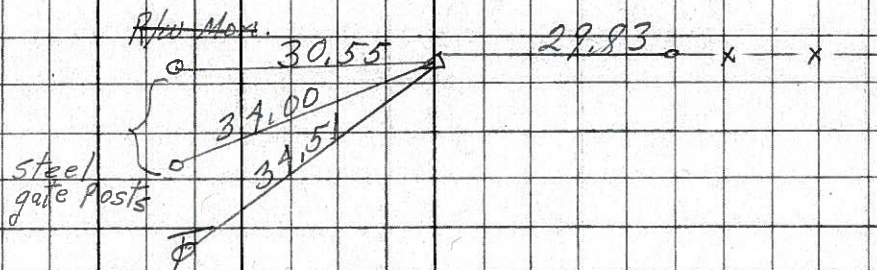
8257



48

165+38.90
 $\Delta = 0^{\circ}0'$
 R.R. SPK.
 4' DOWN

8256



47

161+00
 $\Delta = 0^{\circ}00'$
 set small spk.
 on top

8255

