

O.D.O.T. DISTRICT 2 SURVEY OFFICE (USE ONLY)

PERSONNEL

REFERENCE NO. 52

SHEET 9 OF 10

NOTES LOEHRKE

DATE 6-17-94

ROUTE SR 19

H.C. CANTERBURY

WEATHER PT CLOUDY

COUNTY SENECA

R.C. VOGEL

TEMP. +95

TOWNSHIP SCIPIO

SECTION 22

DWG BY NIESE PID 107060

T 2 N R 16 E

TYPE MONUMENT R.R. SPIKE

~~ON SURFACE~~ - BELOW 1"

OFFSET Q PAVEMENT ON LT : RT

11.4 TO LT EDGE PAVEMENT

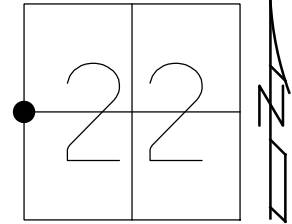
STATION: 452+42

HORZ. DATUM: NAD83(2011)

GEOID: 2012A

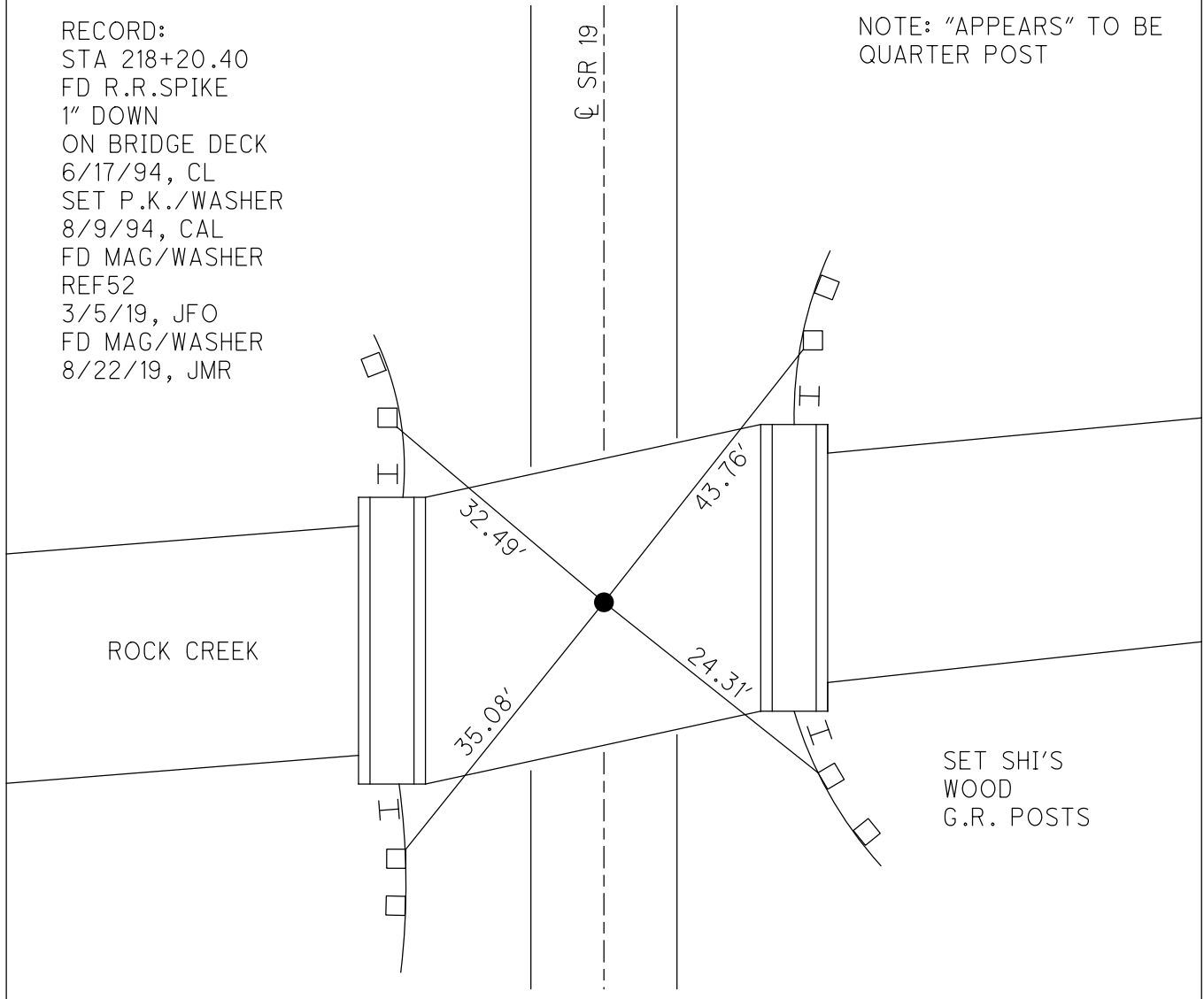
GRID: NORTHING: 528961.448

EASTING: 1826477.146



RECORD:
 STA 218+20.40
 FD R.R. SPIKE
 1" DOWN
 ON BRIDGE DECK
 6/17/94, CL
 SET P.K./WASHER
 8/9/94, CAL
 FD MAG/WASHER
 REF52
 3/5/19, JFO
 FD MAG/WASHER
 8/22/19, JMR

NOTE: "APPEARS" TO BE
 QUARTER POST



O.D.O.T. DISTRICT 2 SURVEY OFFICE

PERSONNEL _____

REFERENCE NO. 52

SHEET 9 OF 26

NOTES LOC HERE

H.C. CANTERBURY

R.C. WOOD

DATE 6-17-94

WEATHER Pt Cloudy

TEMP. +95

ROUTE S.R. 19

COUNTY SENECA

TOWNSHIP Scipio

SECTION 22

T2 N R 16 E

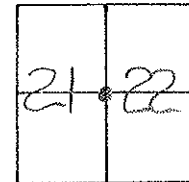
TYPE MONUMENT R.R. SPIKE - ON BRIDGE

ON SURFACE - BELOW 1" Below

LEFT - C PAV'T. - RIGHT Vec

11.4 TO LT EDGE PAVEMENT

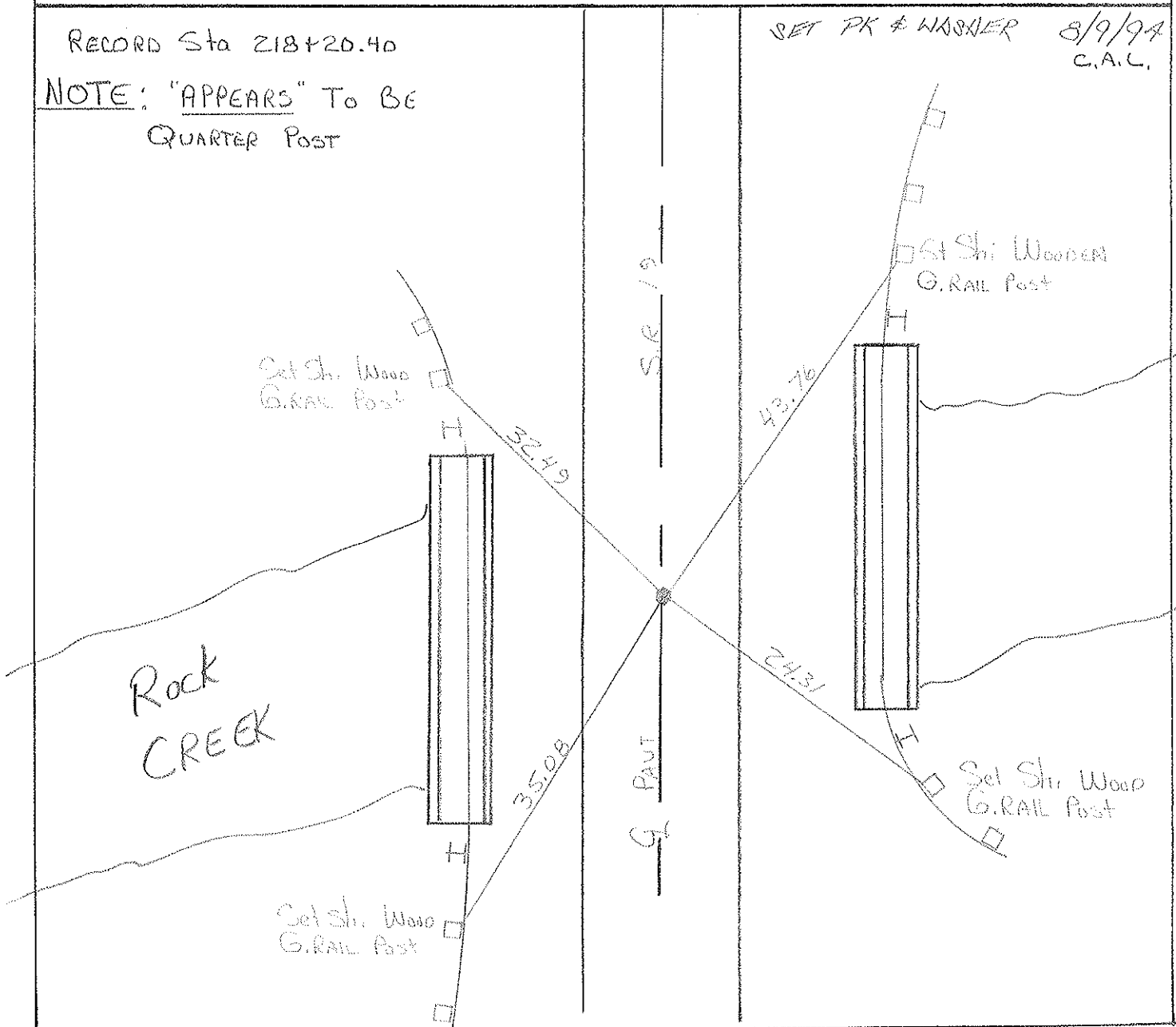
S.L.M. 4103442



RECORD Sta 218+20.40

NOTE: "APPEARS" TO BE
QUARTER POST

SET PK & WASHER 8/9/94
C.A.L.



Q.D.O.T. DISTRICT 2 SURVEY OFFICE

SHEET _____ OF _____

County Seneca S.R. # 19

Date Drawn 11/14/84 9/3/85

Township Scipio

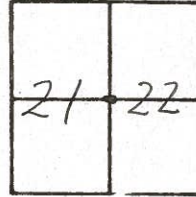
Weather SUNNY

Section 21 & 22

Temp. 88°

T 2 N, R 16 E

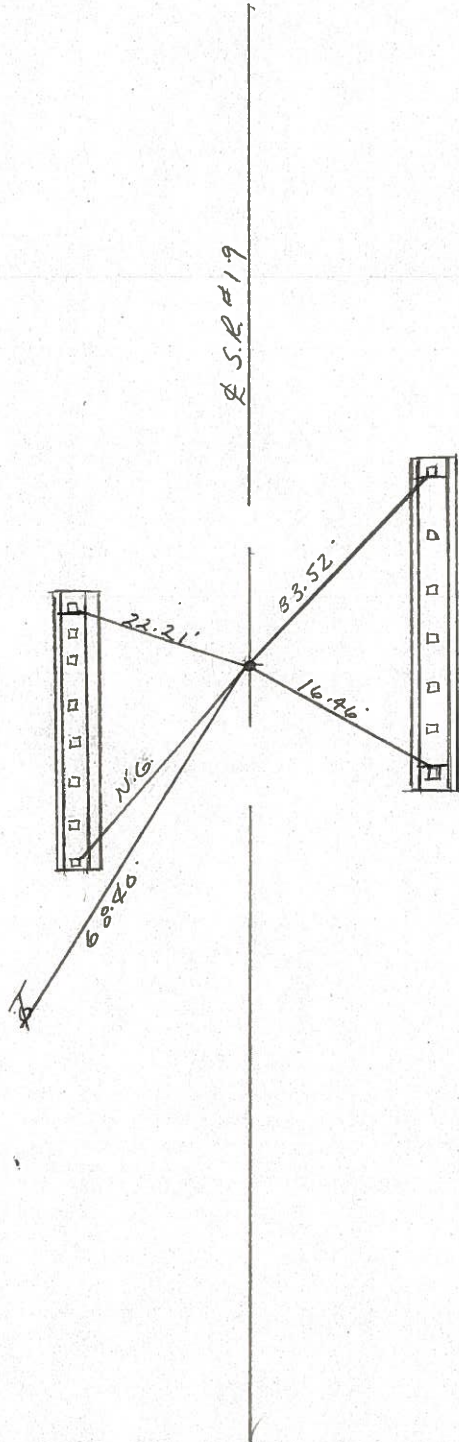
Personnel CRONIN
RIPPLE
GEYMAN



52



218+20.70
FOUND ORIGINAL R.R SPIKE
1 3/4" below SURFACE
Appears to be a 1/4 Post



PERSONNEL TITLE PERSONNEL TITLE

COUNTY Seneca

WEATHER sunny

Ash

Cronin

Ripple

Anderson

Kinson

S. R. # 19

SEC. H

TEMP. 70°

DESCRIPTION Ties for Control Points - Bloomville North

JOB NO.

LEFT CENTER LINE RIGHT

No corrections necessary

Scipio Twp.

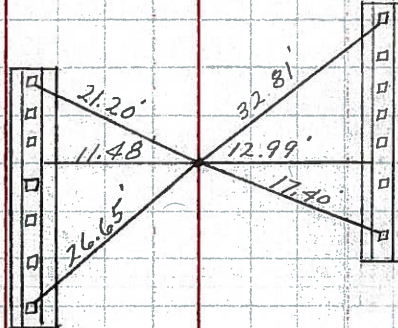
218+20.40

Set small R.R. spk.

Used S.H. (I.C.H.) #485

1929 Plans to reset point. Original tie points in bad shape - retired to different points

#52



Scipio Twp.

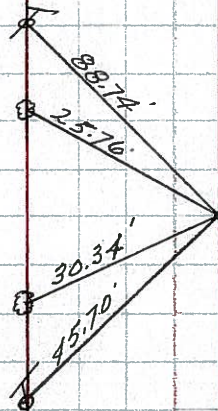
P.O.T.

199+00

Ed. R.R. 2" down.

Raised to Surface

#57



SEC. 21
SEC. 22

PERSONNEL	TITLE	PERSONNEL	TITLE
MOSSER			
BARBOUR			
POTTS			

COUNTY SENECA DATE 8-4-69

S. R. # 19 WEATHER HOT

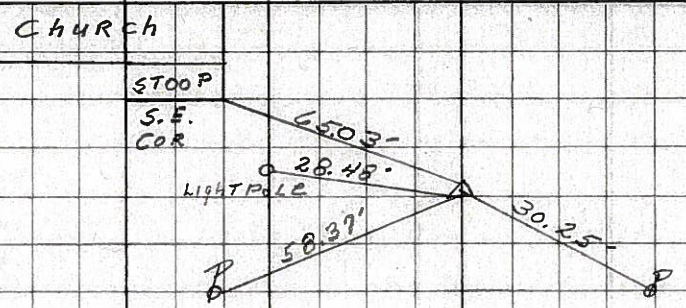
SEC US 224 - NORTH TEMP. 75°

DESCRIPTION TIES FOR CONTROL POINTS JOB NO.

54

$\Delta = 0^{\circ} - 27'$ RT.
AT center ST.
SET P.K. NAIL

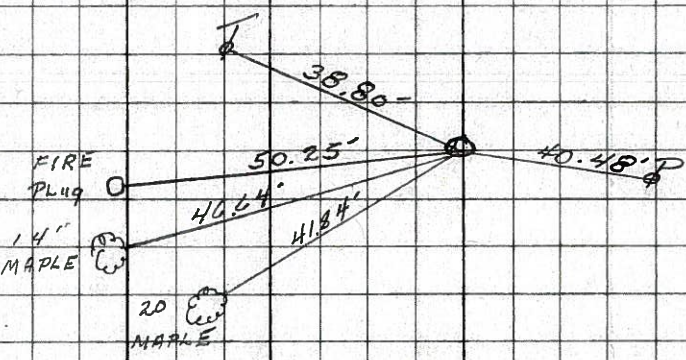
8262



53

$\Delta = 0^{\circ} - 0'$
AT PARK ST.
R.R. SPK. 3" below

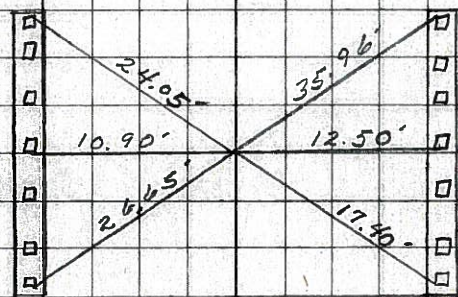
8261



52

STA. 218 + 20.40
 $\Delta = 0^{\circ} - 0'$
TIES DON'T CHECK
P.K. NAIL GONE

8260



51

STA. 199 + 00
 $\Delta = 0^{\circ} - 0'$
R.R. SPK 2" below
SURFACE

8259

