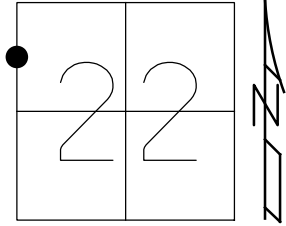


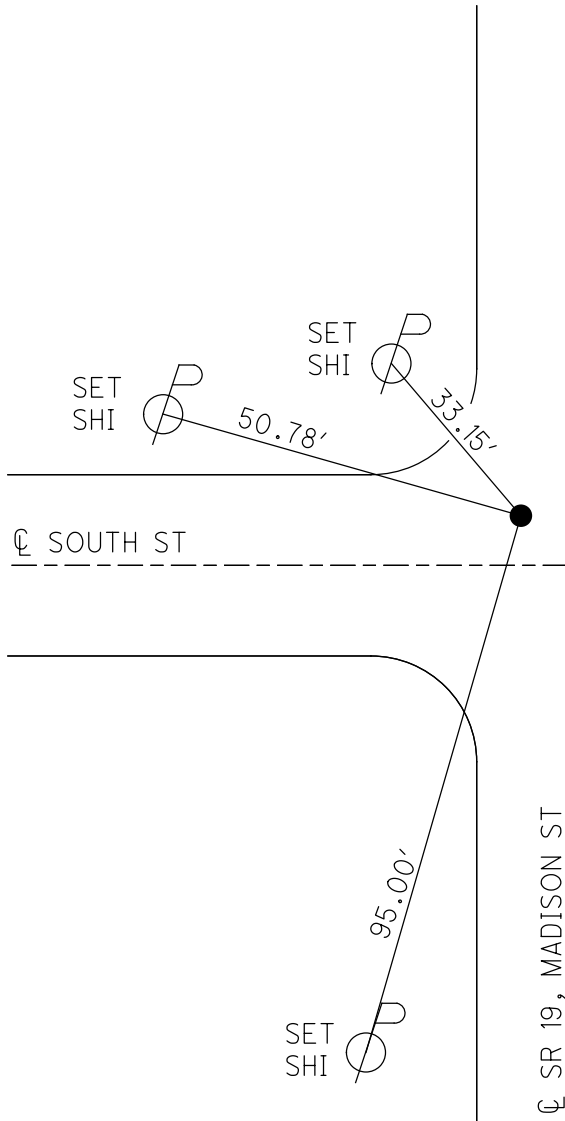
O.D.O.T. DISTRICT 2 SURVEY OFFICE (USE ONLY)

PERSONNEL \_\_\_\_\_ REFERENCE NO. 52A SHEET 10 OF 10  
 NOTES HANK & ASSOC. DATE 6-19-97 ROUTE SR 19  
 H.C. MSW WEATHER - COUNTY SENECA  
 R.C. -- TEMP. - TOWNSHIP SCIPIO  
 DWG BY NIESE PID 107060 SECTION 22  
 T 2 N R 16 E

TYPE MONUMENT 5/8" IRON PIN  
 ON SURFACE - ~~BELOW~~ ON  
 OFFSET  $\odot$  PAVEMENT 4' LT : RT  
- TO - EDGE PAVEMENT  
 STATION: 461+17



HORIZ.DATUM: NAD83(2011) GEOID: 2012A  
 GRID: NORTHING: 529837.223 EASTING: 1826468.064



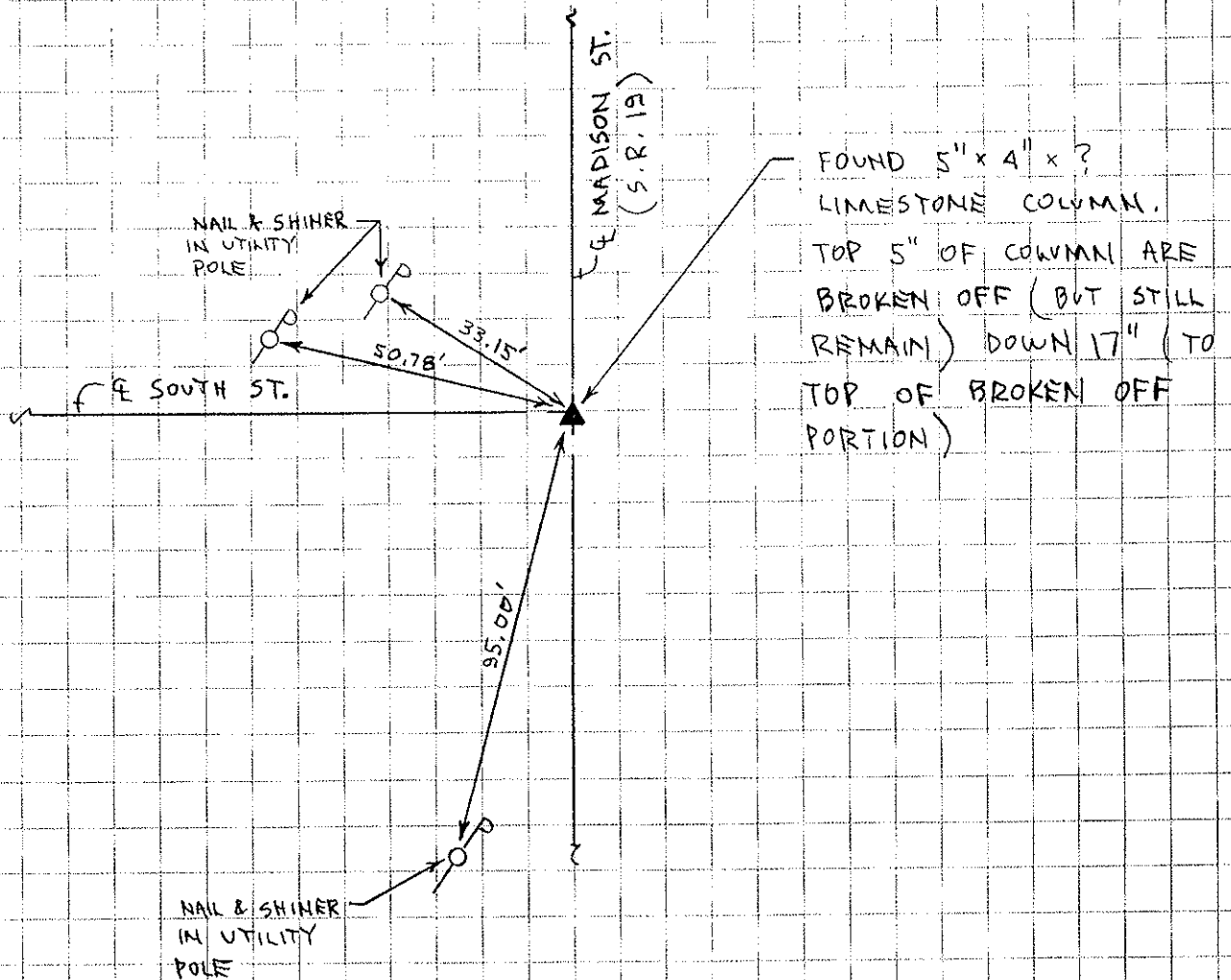
RECORD:  
 FOUND 5"x4"x?  
 LIMESTONE COLUMN.  
 TOP 5" OF COLUMN ARE  
 BROKEN OFF (BUT STILL  
 REMAIN) DOWN 17" (TO  
 TOP OF BROKEN OFF  
 PORTION)  
 SET "MAG" CROSS-TIES FOR STONE  
 SET 5/8" IRON ROD OVER STONE  
 ALL REFERENCE MEASUREMENTS  
 ARE DIRECT  
 6/19/97, HANK & ASSOC., INC.  
 FD 5/8" IPIN  
 REFA52  
 3/5/19, JFO  
 FD 5/8" IPIN  
 8/22/19, JMR

**HANK AND ASSOCIATES, INC.**  
**ENGINEERING • SURVEYING**  
 137 South Washington St.  
 Tiffin, Ohio 44883  
 (419) 447 - 4300

JOB \_\_\_\_\_  
 SHEET NO. \_\_\_\_\_ OF \_\_\_\_\_  
 CALCULATED BY MSW DATE 6-19-97  
 CHECKED BY \_\_\_\_\_ DATE \_\_\_\_\_  
 SCALE \_\_\_\_\_

REFERENCE MONUMENT:

CENTERLINE INTERSECTION OF MADISON STREET (S.R. 19) AND SOUTH STREET IN THE VILLAGE OF REPUBLIC



- SET "MAG" CROSS-TIES FOR STONE
- SET 5/8" IRON ROD OVER STONE
- ALL REFERENCE MEASUREMENTS ARE DIRECT