

O.D.O.T. DISTRICT 2 SURVEY OFFICE (USE ONLY)

PERSONNEL

REFERENCE NO. 53

SHEET 11 OF 14

NOTES LOEHRKE

DATE 6/17/94

ROUTE SR 19

H.C. CANTERBURY

WEATHER HOT

COUNTY SENECA

R.C. HERMILLER

TEMP. 92°

TOWNSHIP SCIPIO

SECTION 22

DWG BY NIESE PID _____

T 2 N R 16 E

TYPE MONUMENT P.K./WASHER

ON SURFACE - ~~BELOW~~ ON

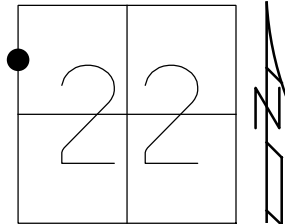
OFFSET ☉ PAVEMENT ON LT : RT

12.0' TO RT EDGE PAVEMENT

STATION: 465+56

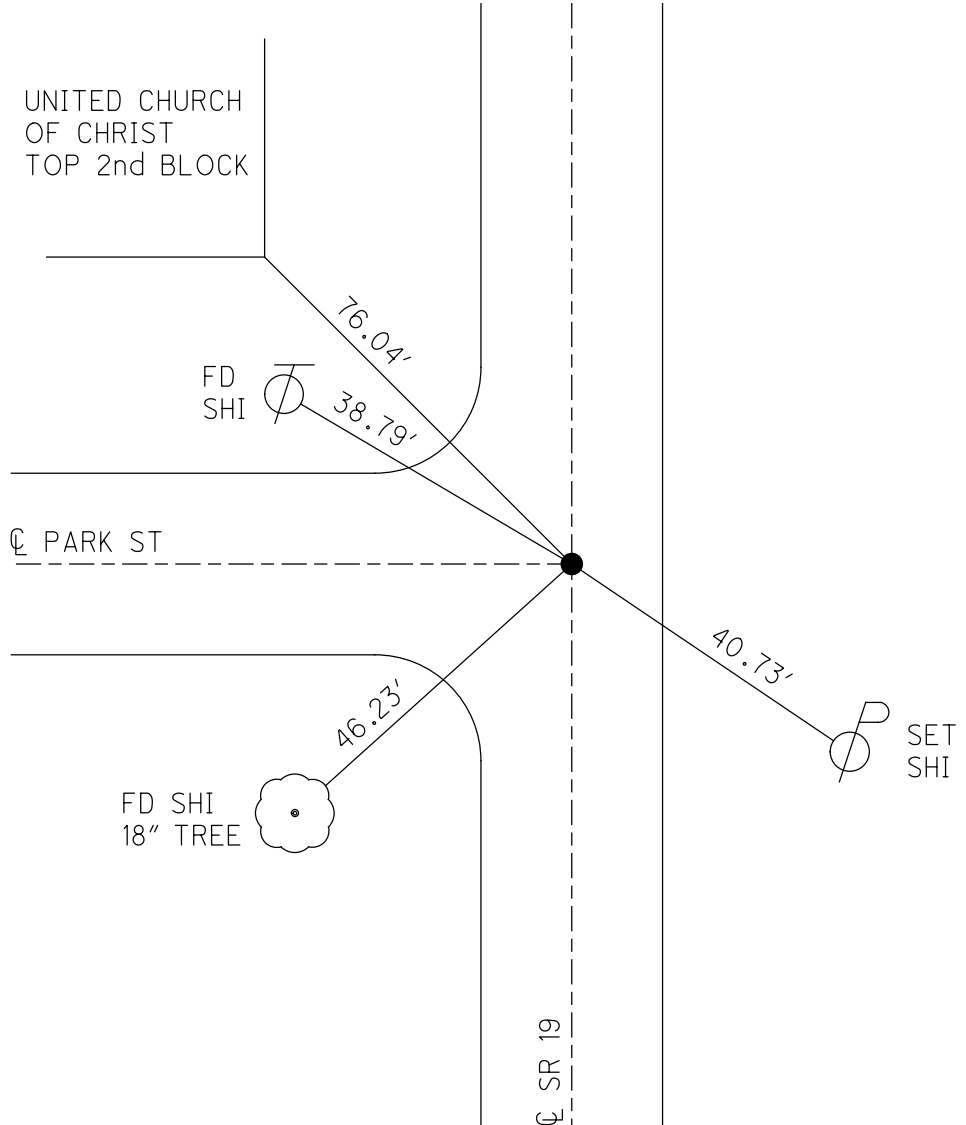
HORZ.DATUM: _____ GEOID: _____

GRID: NORTHING: _____ EASTING: _____



RECORD:
 STA 13+13.30
 FD P.K./WASHER
 6/17/94, CAL
 SET P.K./WASHER
 8/9/94, CAL
 FROM CRONIN NOTES
 STA 218+20.40
 0+00 AHD
 9/3/85

UNITED CHURCH
 OF CHRIST
 TOP 2nd BLOCK



☉ SR 19

O.D.O.T. DISTRICT 2 SURVEY OFFICE

PERSONNEL _____

REFERENCE NO. 53

SHEET 10 OF 26

NOTES LOEHRKE

H.C. CANTERBURY

R.C. Hemiller

DATE 6-17-94

WEATHER Hot

TEMP. +92

ROUTE S.R. 19

COUNTY SENECA

TOWNSHIP Scipio

SECTION 22

T. 2 N. R. 16 E.

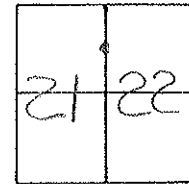
TYPE MONUMENT PK/WASHER

ON SURFACE - BELOW Yes

LEFT - Q PAV'T. - RIGHT BOTH

12.0 TO Rt EDGE PAVEMENT

S.L.M. 405 + 56



RECORD Sta 13+13.30

218+20.40 = 0+00 AHEAD

UNITED CHURCH
of CHRIST

TOP 2nd BRICK

7d SWI.

Q PARK St.

H₂O NYD.

16.25'

18" 7d SWI.

2 STORY
RFB.

Q S.R. 19

SET PK WASHER

8/9/94
C.A.L.

40.75'

SET SWI.

NOTE: FROM CRONIN NOTES
Dated 9-3-85
Sta 218+20.40 = 0+00 Ahead

HANK AND ASSOCIATES, INC.

ENGINEERING • SURVEYING

137 South Washington St.

Tiffin, Ohio 44883

(419) 447-4300

JOB _____

SHEET NO. _____ OF _____

CALCULATED BY MSW DATE 6-18-97

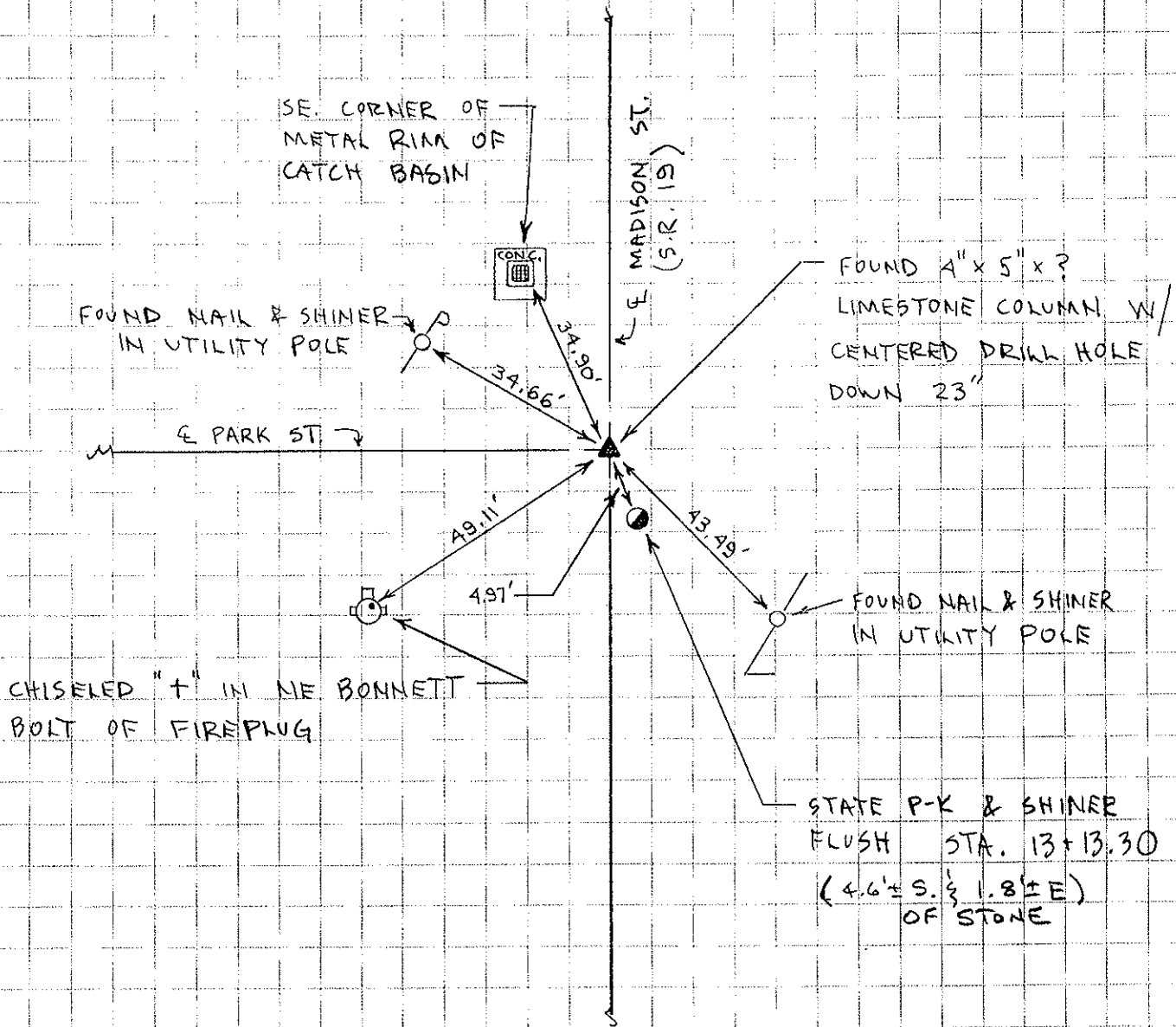
CHECKED BY _____ DATE _____

SCALE _____

From Jim Hohman July 1997

REFERENCE MONUMENT

CENTERLINE INTERSECTION OF
MADISON STREET (S.R. 19) WITH
PARK STREET IN THE VILLAGE
OF REPUBLIC.



- SET "MAG" THROWOVERS FOR STONE
- SET 5/8" Ø IRON ROD OVER STONE
- ALL REFERENCE MEASUREMENTS ARE DIRECT

County SENECA S. R. #19

Date Drawn 11/14/84 9/3/85

Township SCIPIO

Weather SUNNY

Section 21 & 22

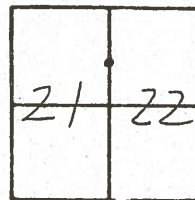
Temp. 89°

T2N, R16E

Personnel CROWIN

RIPPLE

GEYMAN

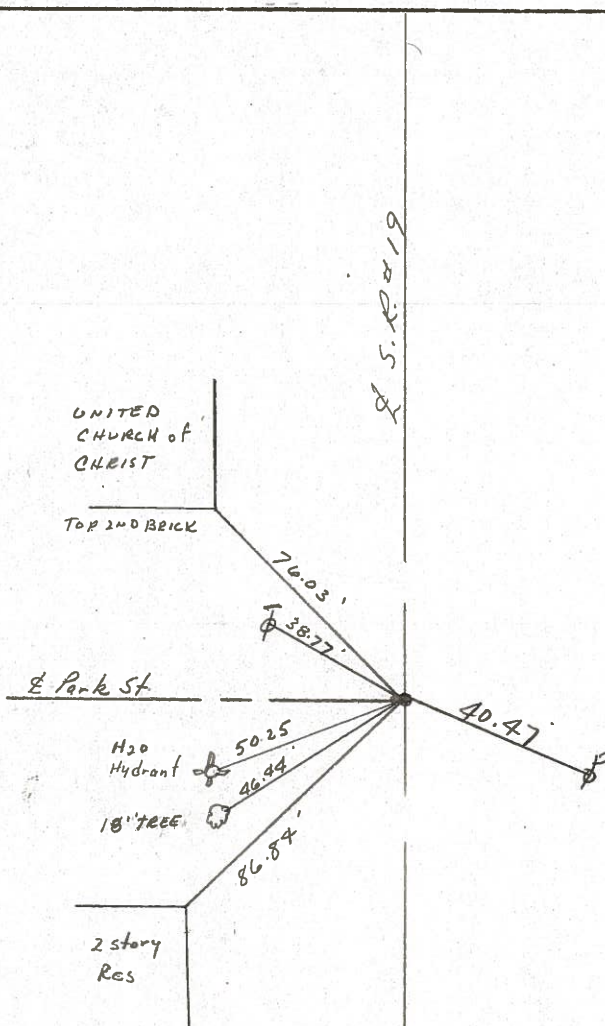


53

218 + 20.40 = 0 + 00 Ahd

13 + 13.30

P.K. WASHNER ATOP P.K. WASHNER
ATOP 2 R.R. SPIKES



PERSONNEL TITLE PERSONNEL TITLE

Ash _____ COUNTY Seneca

Cronin _____ S. R. #19

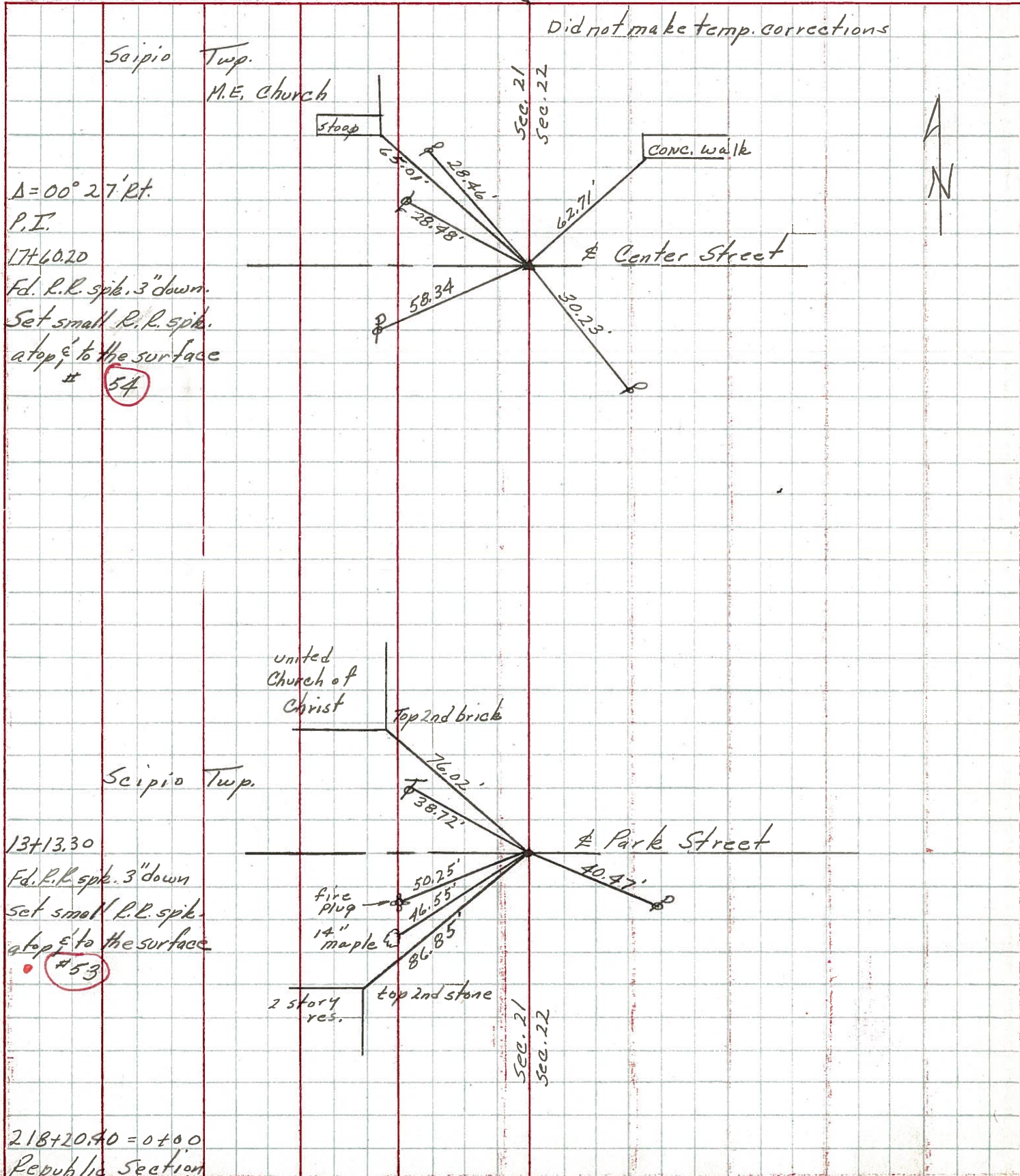
Ripple _____ WEATHER sunny

Anderson _____ Vinson _____ SEC. Sheet #11 Sec. H.

TEMP. 74°

DESCRIPTION Ties for Control Points - Republic 1929 Plans

LEFT CENTER LINE RIGHT JOB NO.



PERSONNEL TITLE PERSONNEL TITLE

COUNTY SENeca

DATE 8-4-69

MOSSER

BARBOUR

POTTS

S. R. # 19

WEATHER HOT

SEC US 224 - NORTH

TEMP. 75°

DESCRIPTION

TIES FOR CONTROL POINTS

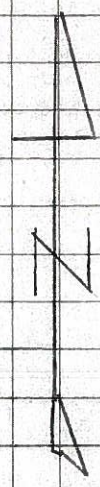
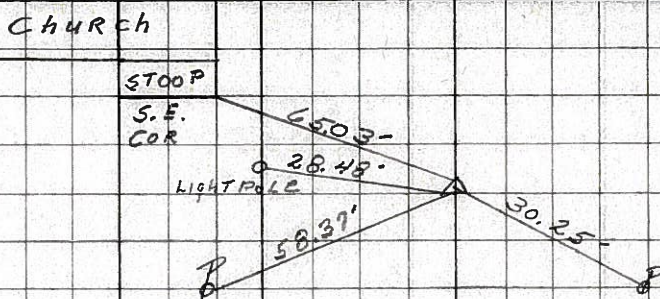
JOB NO.

LEFT CENTER LINE RIGHT

54

$\Delta = 0^{\circ} 27'$ RT.
AT CENTER ST.
SET P.K. NAIL

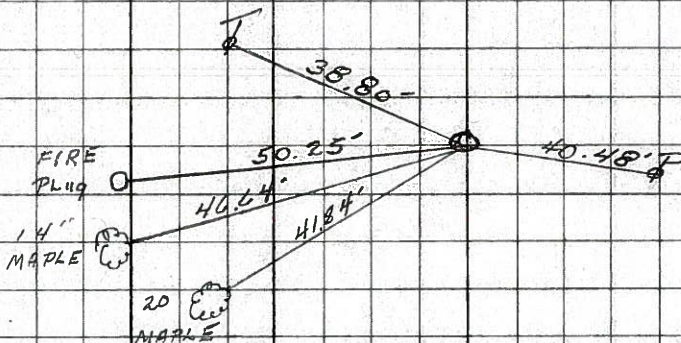
8262



53

$\Delta = 0^{\circ} 0'$
AT PARK ST.
R.R. SPK. 3" below

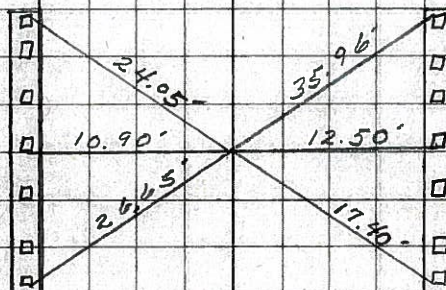
8261



52

STA. 218+20.40
 $\Delta = 0^{\circ} 0'$
TIES DON'T CHECK
P.K. NAIL GONE

8260



51

STA. 199+00
 $\Delta = 0^{\circ} 0'$
R.R. SPK 2" below
SURFACE

8259

