

O.D.O.T. DISTRICT 2 SURVEY OFFICE (USE ONLY)

PERSONNEL

REFERENCE NO. 54

SHEET 12 OF 14

NOTES LOEHRKE DATE 6/17/94

H.C. CANTERBURY WEATHER HOT

R.C. HERMILLER TEMP. 95°

ROUTE SR 19

COUNTY SENECA

TOWNSHIP SCIPIO

SECTION 22

DWG BY NIESE PID _____

T 2 N R 16 E

TYPE MONUMENT P.K./WASHER

ON SURFACE - ~~BELOW~~ ON

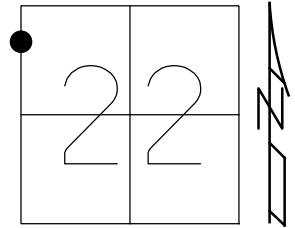
OFFSET ☉ PAVEMENT ON LT : RT

- TO - EDGE PAVEMENT

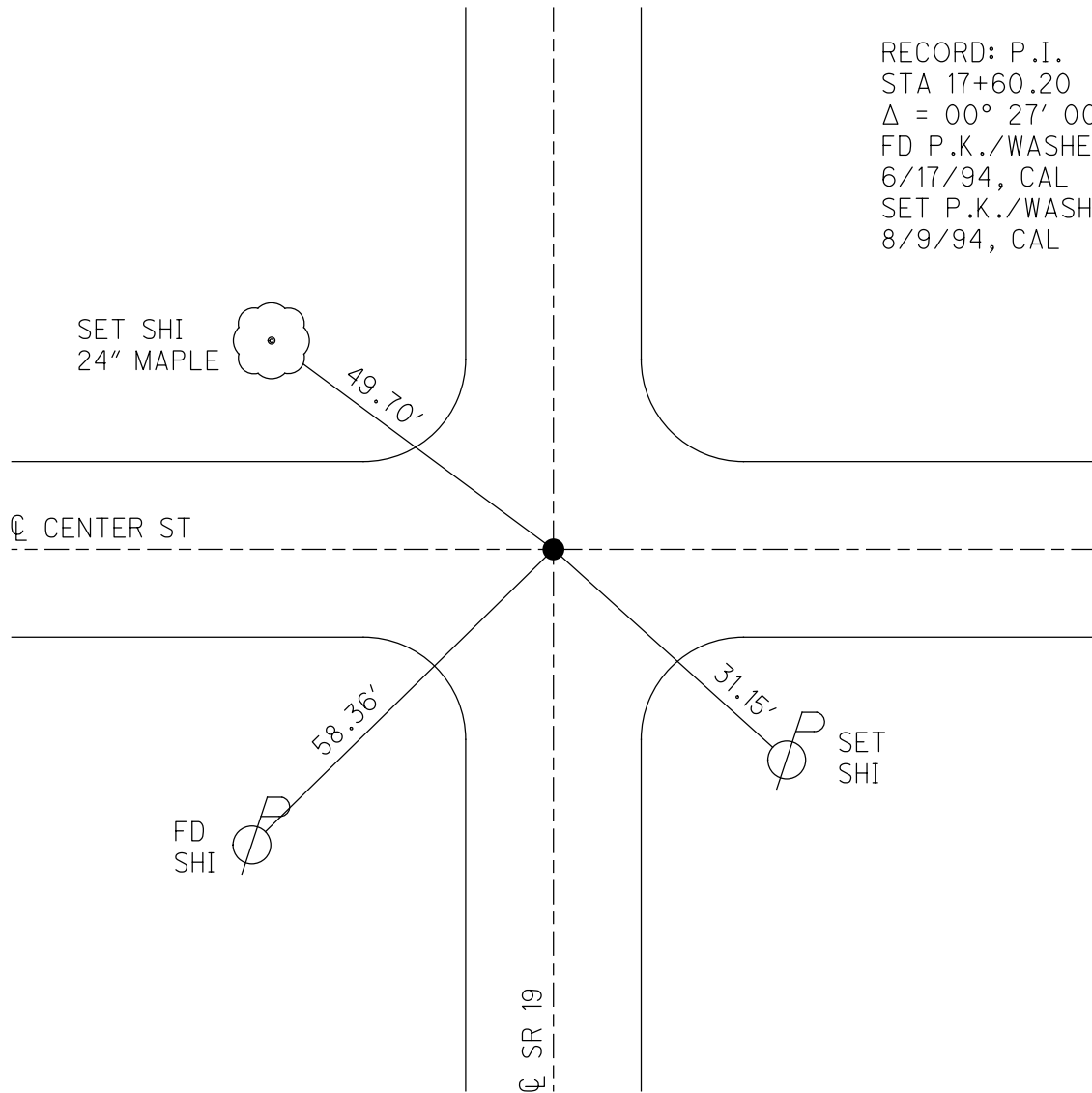
STATION: 470+05

HORZ.DATUM: _____ GEOID: _____

GRID: NORTHING: _____ EASTING: _____



RECORD: P.I.
 STA 17+60.20
 $\Delta = 00^\circ 27' 00''$ RT
 FD P.K./WASHER
 6/17/94, CAL
 SET P.K./WASHER
 8/9/94, CAL



O.D.O.T. DISTRICT 2 SURVEY OFFICE

PERSONNEL _____

REFERENCE NO. 54

SHEET 11 OF 26

NOTES LOHRKE

H.C. CANTERBURY

R.C. HERMILLER

DATE 6-17-94

WEATHER HOT

TEMP. 95

ROUTE SR 19

COUNTY SENECA

TOWNSHIP Scipio

SECTION 22

T. 2 N. R. 16 E.

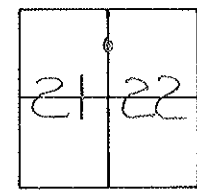
TYPE MONUMENT PK/WASHER

ON SURFACE - BELOW Yes

~~LEFT~~ - C PAV'T. - RIGHT BOTH

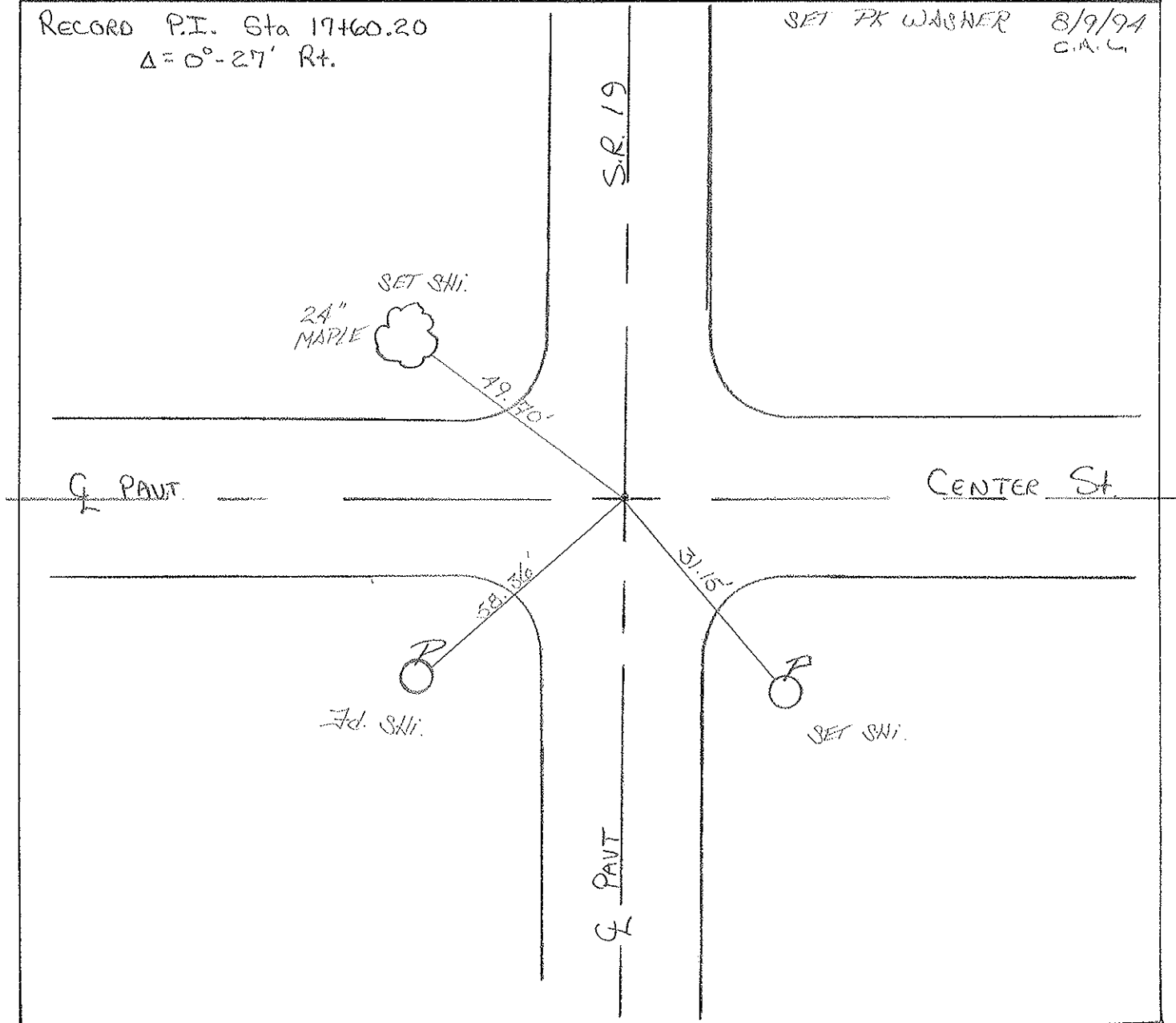
TO EDGE PAVEMENT

S.L.M. 470+05



RECORD P.I. Sta 17+60.20
 $\Delta = 0^\circ - 27' \text{ Rt.}$

SET PK WASHER 8/9/94
 C.M.L.



Q.D.O.T. DISTRICT 2 SURVEY OFFICE

SHEET _____ OF _____

County Seneca S.R. #19

Date Drawn 11/14/84 9/3/85

Township Scipio

Weather SUNNY

Section 21 & 22

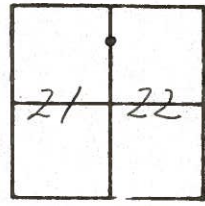
Temp. 89°

T2N, R16E

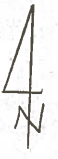
Personnel CRONIN

RIPPLE

GEYMAN



54

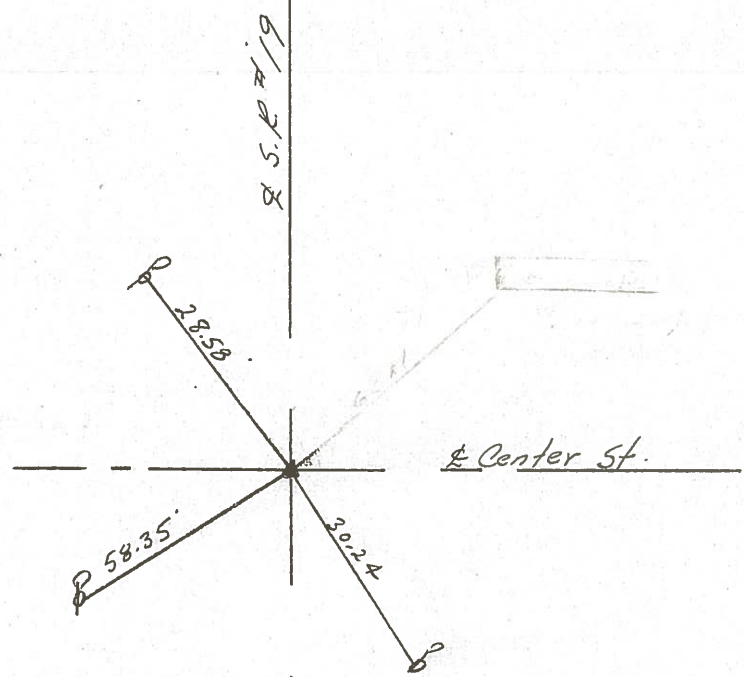


P.T. A = 00° 27' Pt. Rec.

17+60.20

SET. P.V. & WASHER AT OP P.V. &

WASHER AT OP 2 R.R. SPINES



PERSONNEL TITLE PERSONNEL TITLE

Ash

COUNTY Seneca

Cronin

S. R. #19

WEATHER sunny

Ripple

SEC. Sheet #11 Sec. H.

TEMP. 74°

Anderson

Vinson

1929 Plans

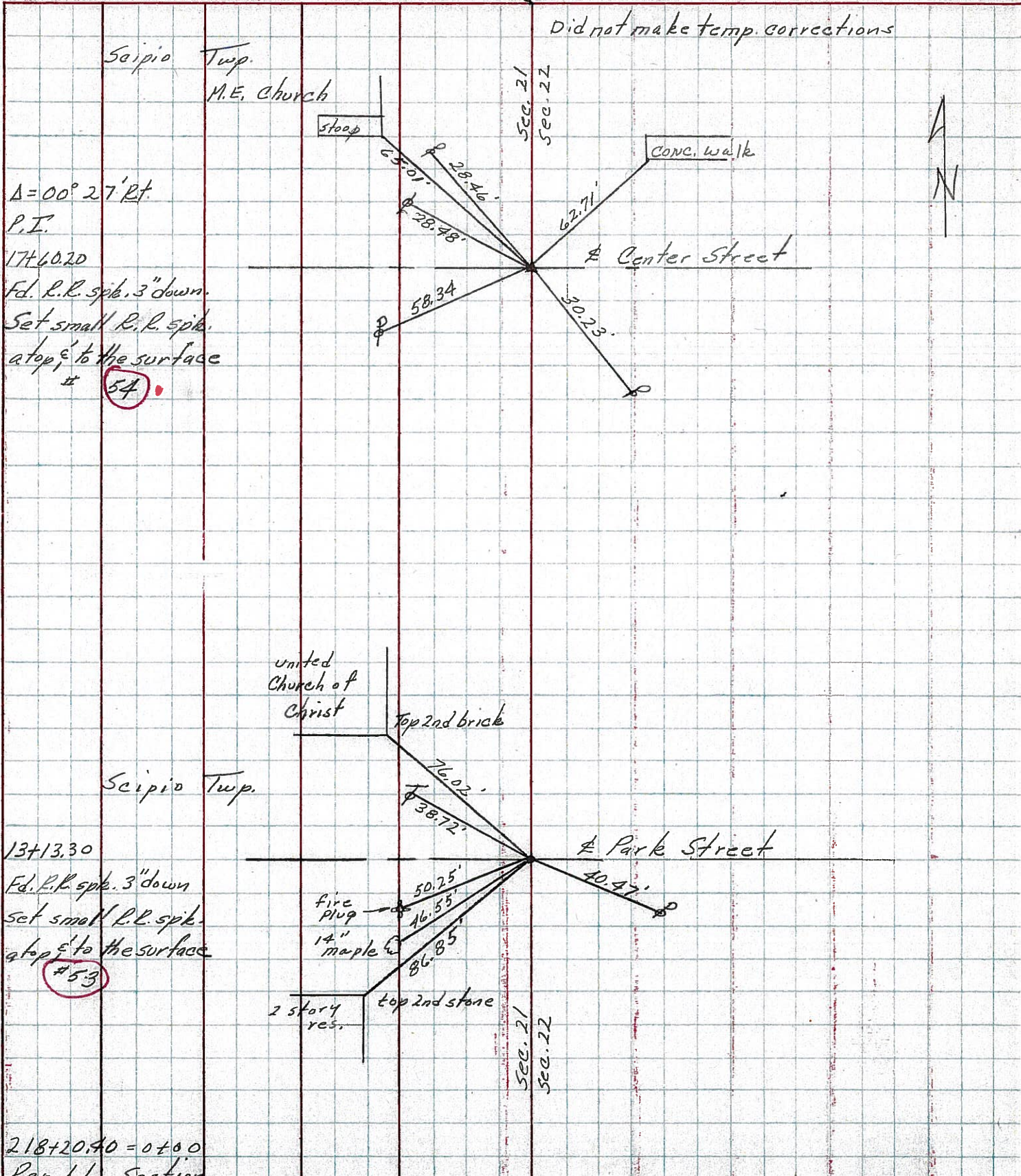
DESCRIPTION Ties for Control Points - Republic

JOB NO.

LEFT

CENTER LINE

RIGHT



PERSONNEL TITLE PERSONNEL TITLE

MOSSER

COUNTY SENECA

DATE 8-4-69

BARBOUR

S. R. # 19

WEATHER HOT

POTTS

SEC 15 224 - NORTH

TEMP. 75°

DESCRIPTION

TIES FOR CONTROL POINTS

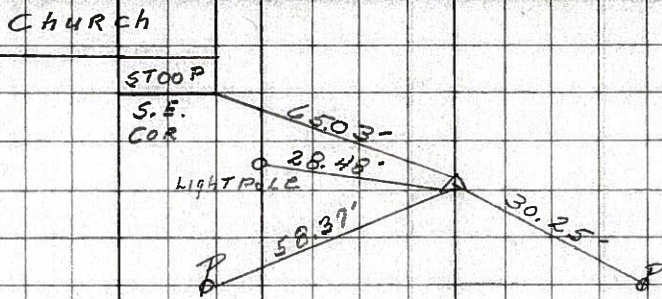
JOB NO.

LEFT CENTER LINE RIGHT

54

$\Delta = 0^{\circ} 27'$ RT.
AT CENTER ST.
SET P.K. NAIL

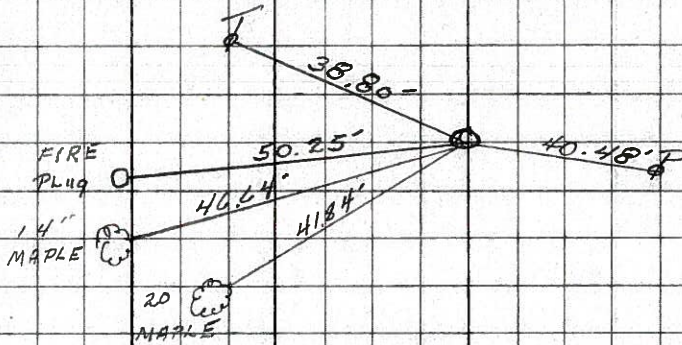
8262



53

$\Delta = 0^{\circ} 0'$
AT PARK ST.
RR. SPK. 3" below

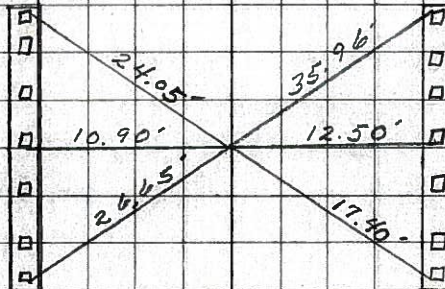
8261



52

STA. 218+20.40
 $\Delta = 0^{\circ} 0'$
TIES DON'T CHECK
P.K. NAIL GONE

8260



51

STA. 199+00
 $\Delta = 0^{\circ} 00'$
RR. SPK 2" below
SURFACE

8259

