

O.D.O.T. DISTRICT 2 SURVEY OFFICE (USE ONLY)

PERSONNEL

REFERENCE NO. 55

SHEET 13 OF 14

NOTES LOEHRKE

DATE 6/17/94

ROUTE SR 19

H.C. CANTERBURY

WEATHER HOT

COUNTY SENECA

R.C. HERMILLER

TEMP. 94°

TOWNSHIP SCIPIO

SECTION 22

DWG BY NIESE PID _____

T 2 N R 16 E

TYPE MONUMENT R.R. SPIKE

ON SURFACE - ~~BELOW~~ ON

OFFSET \odot PAVEMENT ON LT : RT

- TO - EDGE PAVEMENT

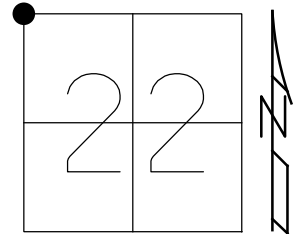
STATION: 478+88

HORZ.DATUM: _____

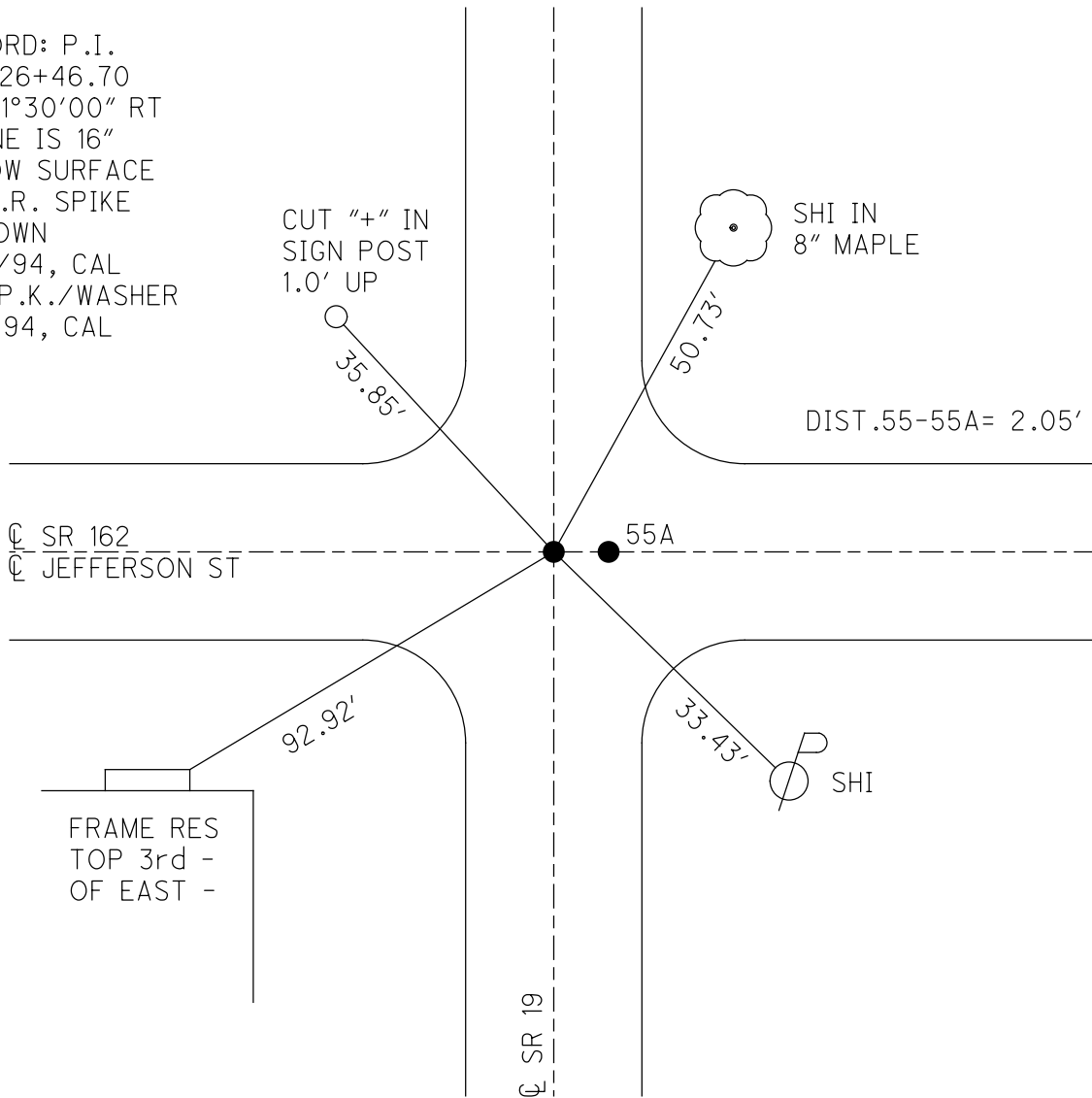
GEOID: _____

GRID: NORTHING: _____

EASTING: _____



RECORD: P.I.
 STA 26+46.70
 $\Delta = 01^{\circ}30'00''$ RT
 STONE IS 16"
 BELOW SURFACE
 FD R.R. SPIKE
 2" DOWN
 6/17/94, CAL
 SET P.K./WASHER
 8/9/94, CAL



CUT "+" IN
 SIGN POST
 1.0' UP

SHI IN
 8" MAPLE

DIST. 55-55A = 2.05'

\odot SR 162
 \odot JEFFERSON ST

55A

FRAME RES
 TOP 3rd -
 OF EAST -

SHI

\odot SR 19

O.D.O.T. DISTRICT 2 SURVEY OFFICE

PERSONNEL

REFERENCE NO. 55

SHEET 12 OF 26

NOTES LOEHRKE

H.C. CANTERBURY

DATE 6-17-94

ROUTE S.R. 19

R.C. HEMILLER

WEATHER Hot

COUNTY SENECA

TEMP. +94

TOWNSHIP Scipio

SECTION 15

T. 2 N. R. 16 E.

TYPE MONUMENT R.R. Spike

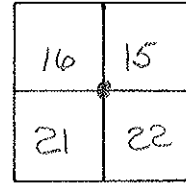
Set P.K. / weather @ both points 8-9-94 C.A.M.

~~ON SURFACE~~ - BELOW 2" Below

~~LEFT - & PAV'T. - RIGHT~~ "A"

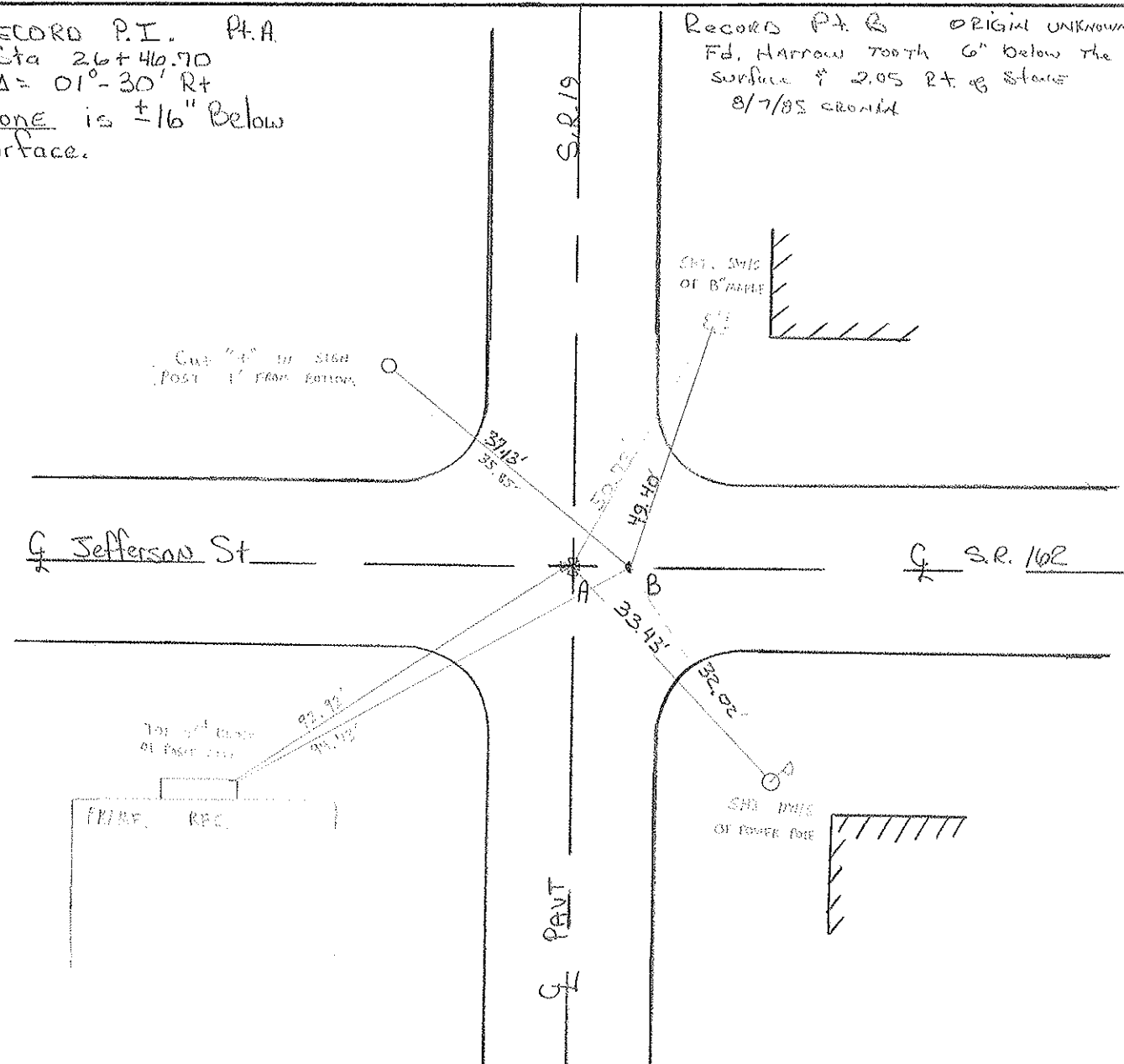
~~TO~~ EDGE PAVEMENT

S.L.M. 478+88



RECORD P.I. Pt. A
Sta 26+46.70
 $\Delta = 01^{\circ} - 30' \text{ Rt}$
Stone is $\pm 16''$ Below Surface.

RECORD Pt. B ORIGINAL UNKNOWN
Fd. Harrow tooth 6" below the surface & 2.05 ft. of stone 8/7/85 ground



County Seneca S.R. #19

Date 8/17/85
Drawn 11/14/84

Township Scipio

Weather cloudy

Section 15, 16, 21, 22

Temp. 74°

T2N, R16E

Personnel CRONIN
RIPPLE
GEYMAN
BARBOUR

16	15
21	22



#55

(55)

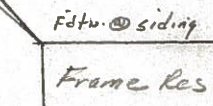
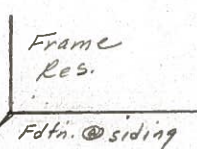
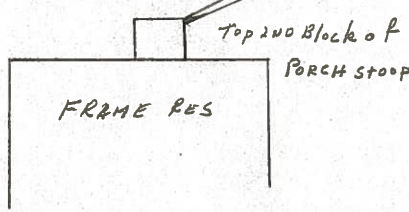
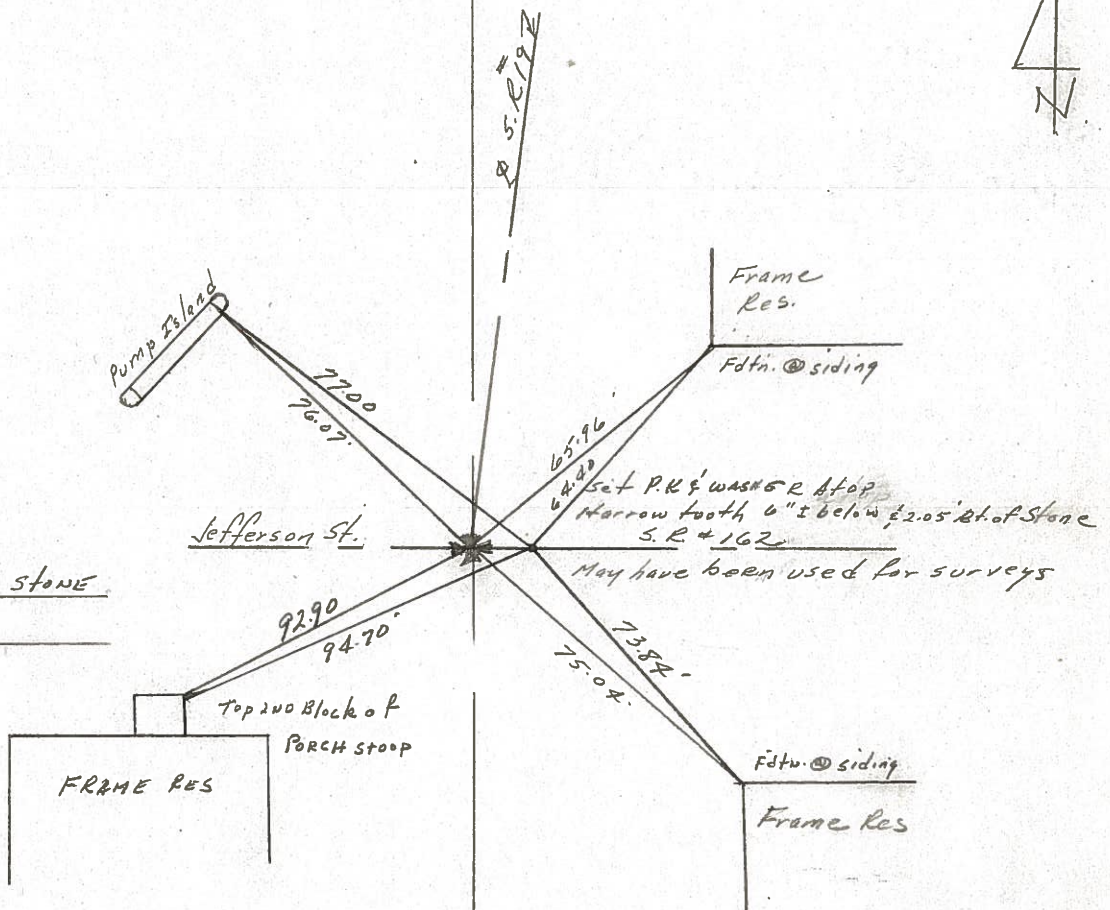


P.I. $\Delta = 01^{\circ}30' R$

20 + 46.70

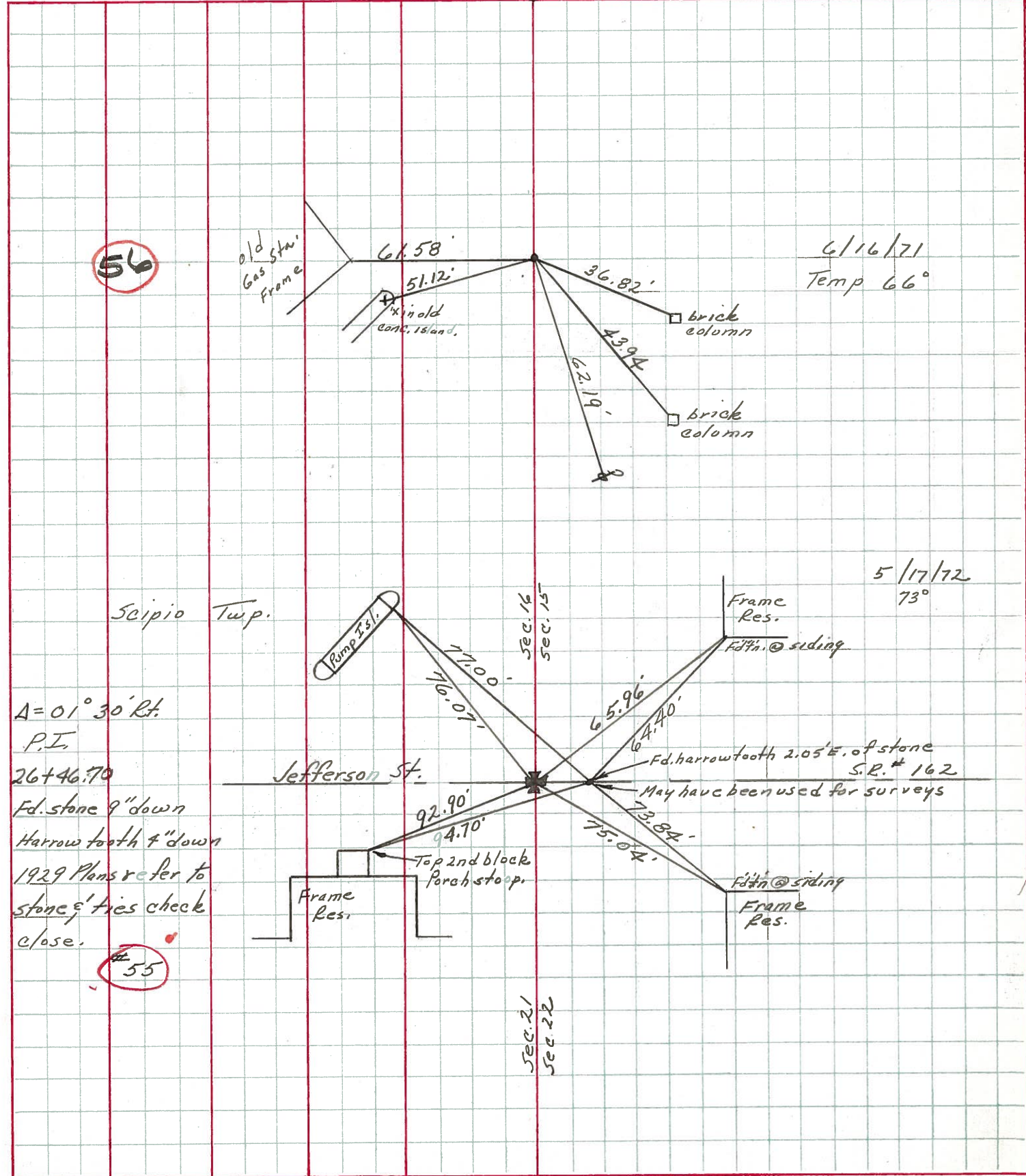
Set P.K. & WASHER ATOP STONE

14" \pm Below surface



PERSONNEL	TITLE	PERSONNEL	TITLE	COUNTY	DATE	WEATHER	TEMP.
Ash				Seneca	drawn 10/13/72		
Cronin				#19			
Ripple							
Anderson		Vinson		SEC. F			

DESCRIPTION Ties for Control Points - Republic JOB NO. _____



56

6/16/71
Temp 66°

5/17/72
73°

Scipio Twp.
 $A = 01^{\circ} 30' \text{ Rt.}$
 P.I.
 $26 + 46.70$
 Fd. stone 9" down
 Harrowtooth 4" down
 1929 Plans refer to
 stone & ties check
 close.

55

sec. 21
sec. 22

PERSONNEL TITLE PERSONNEL TITLE

MOSSEK

COUNTY Seneca

DATE

8-4-69

BARBOUR

S. R. 19

WEATHER

HOT

POTTS

SEC. US 224-NORTH

TEMP.

80°

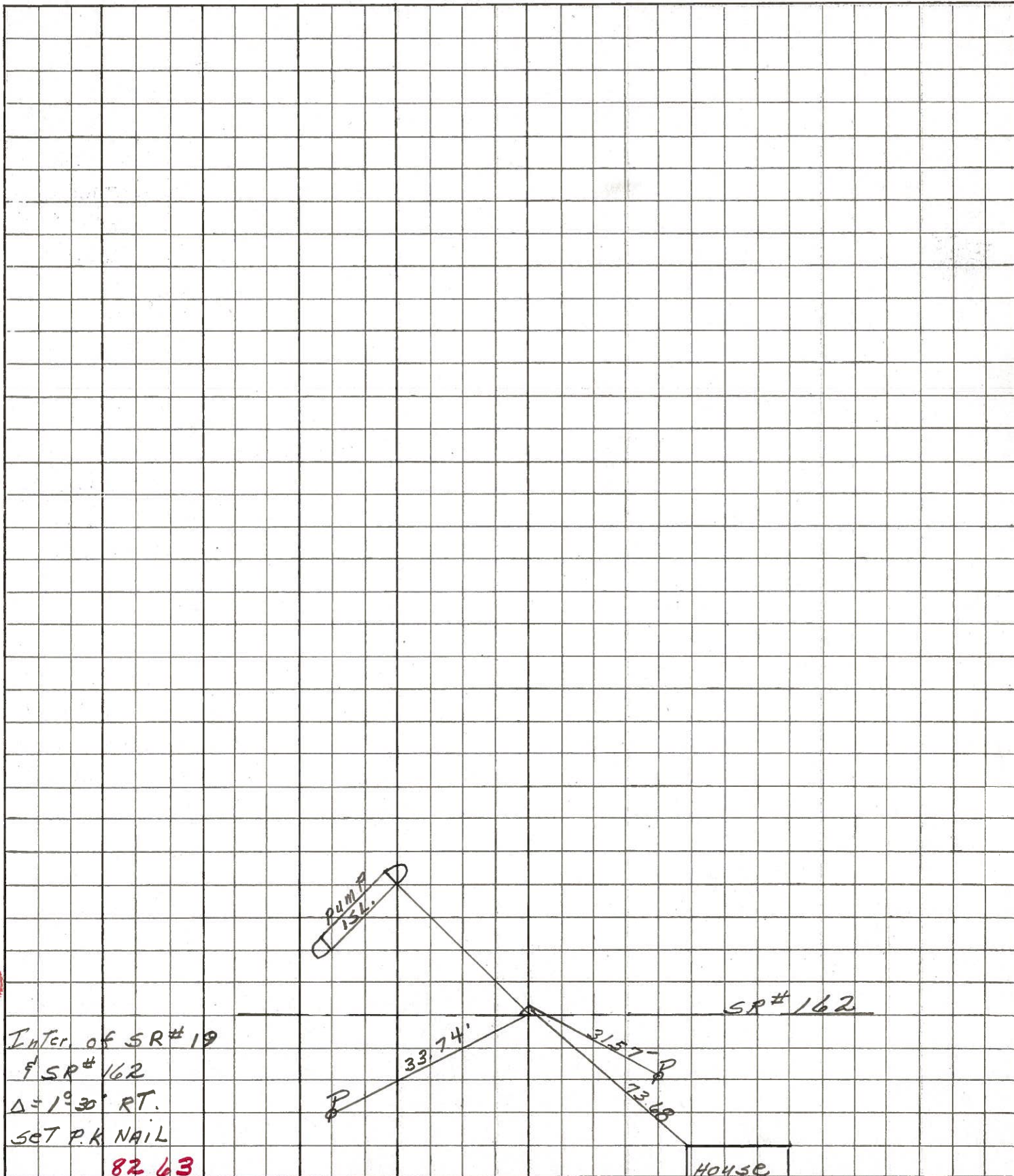
DESCRIPTION

LEFT

CENTER LINE

RIGHT

JOB NO.



8263