

O.D.O.T. DISTRICT 2 SURVEY OFFICE (USE ONLY)

PERSONNEL _____ REFERENCE NO. 56 SHEET 3 OF 32
 NOTES LEU DATE 3/12/18 ROUTE SR 19
 H.C. O'DONNELL WEATHER CLOUDY COUNTY SENECA
 R.C. AUBLE TEMP. 31° TOWNSHIP SCIPIO
 DWG BY MILLER PID 102817 SECTION 16
 T 2 N R 16 E

TYPE MONUMENT _____ P.K.NAIL _____

~~ON SURFACE~~ - BELOW 1 1/2"

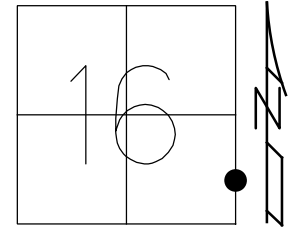
OFFSET \odot PAVEMENT _____ ON ~~LT~~ : ~~RT~~

10.8' TO LT EDGE PAVEMENT

STATION: 484+70.40

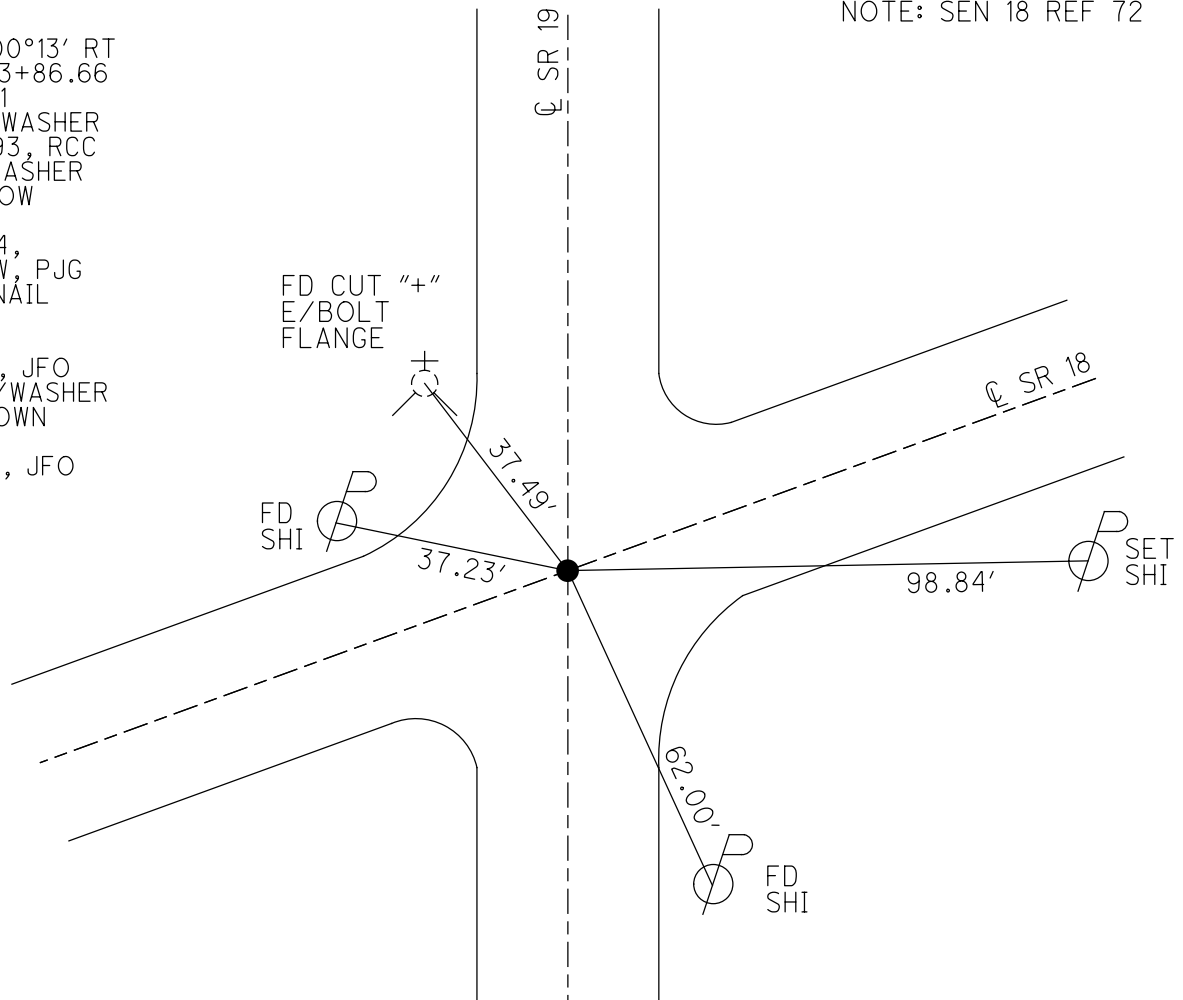
HORIZ.DATUM: NAD83(2011) GEOID: NAVD88 2012A

GRID: NORTHING: 532175.183 EASTING: 1826480.862



RECORD:
 P.I. $\Delta=00^{\circ}13'$ RT
 STA. 403+86.66
 6-16-1971
 SET PK/WASHER
 8-27-1993, RCC
 FD PK/WASHER
 1.5" BELOW
 REF72
 05-08-14,
 JLL, EBW, PJG
 FD P.K.NAIL
 1" DOWN
 REF30
 2/29/16, JFO
 FD P.K./WASHER
 1 1/2" DOWN
 REF56
 10-25-16, JFO

NOTE: SEN 18 REF 72



O.D.O.T. DISTRICT 2 SURVEY OFFICE (USE ONLY)

PERSONNEL	REFERENCE NO.	<u>56</u>	SHEET	<u>13</u>	OF	<u>26</u>
NOTES	CHENEY	DATE	<u>7-2-93</u>	ROUTE	<u>SR 19</u>	
H.C.	<u>RIPPLE</u>	WEATHER	<u>CLOUDY</u>	COUNTY	<u>SENECA</u>	
R.C.	<u>BARBOUR</u>	TEMP.	<u>85°F</u>	TOWNSHIP	<u>SCIPIO</u>	
	<u>GEYMAN</u>			SECTION	<u>16</u>	
				T	<u>2</u>	R
					<u>16</u>	<u>E</u>

TYPE MONUMENT PK/WASHER

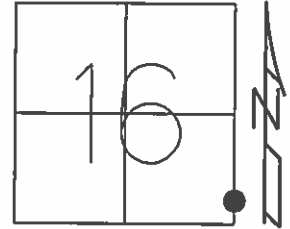
~~ON SURFACE~~ - BELOW 1"

~~LEFT~~ - Q PAV'T - RIGHT 0.5'

10.5' TO RT EDGE PAVEMENT

S.L.M. 484+51

Grid: Northing: 532175.1305 Easting: 1826480.8463



RECORD:
P.I. $\Delta=00^{\circ}13'$ RT
STA. 403+86.66
6-16-1971

NOTE:
SR 18=REF 72

SET PK/WASHER
8-27-1993, RCC

FD PK/WASHER
1.5" BELOW
GPS, REF72
05-08-14,
JLL, EBW, PJG

1.6' UP
NE/S
OLD GAS
STATION
FRAME BLDG.

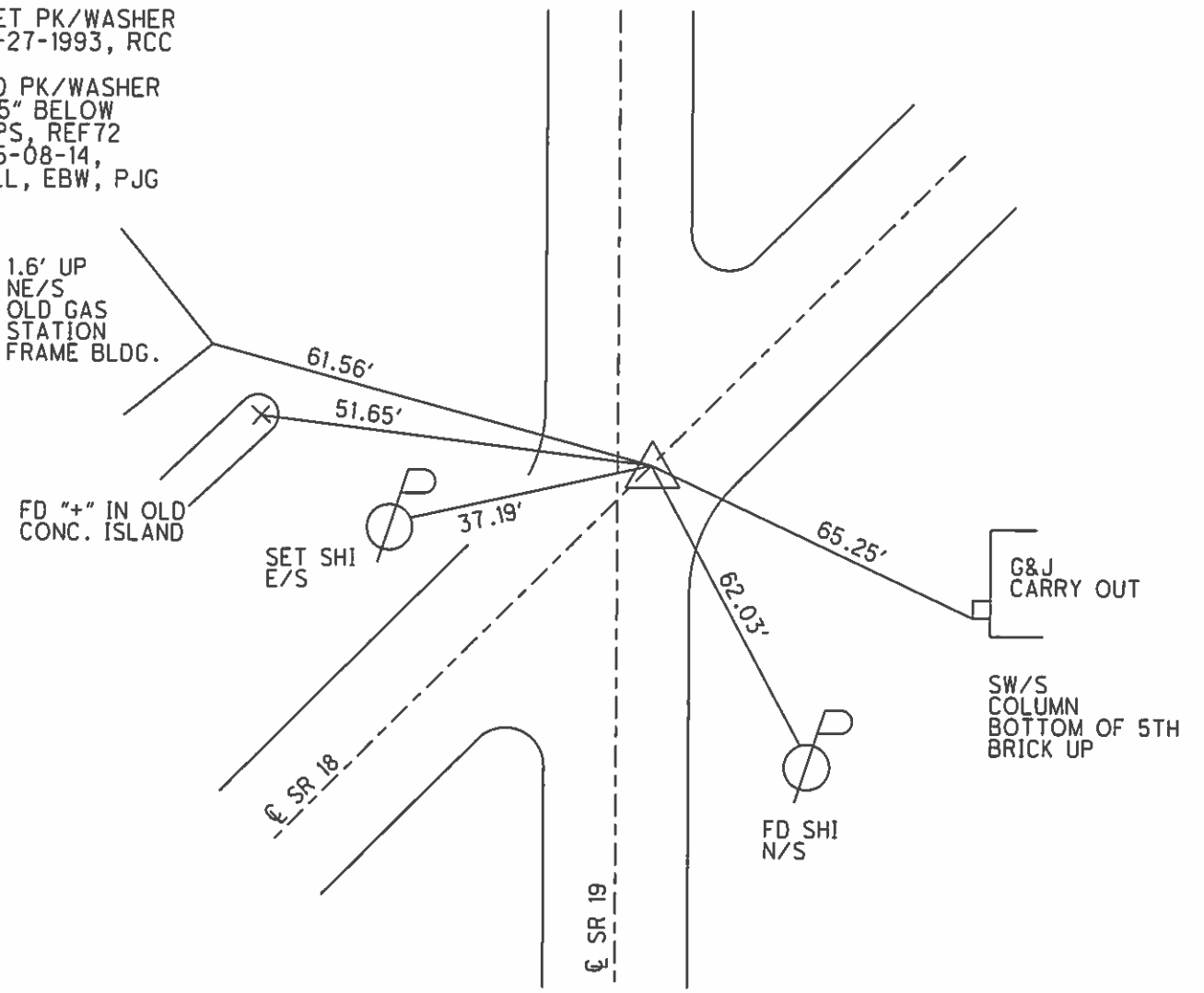
FD "+" IN OLD
CONC. ISLAND

SET SHI
E/S

G&J
CARRY OUT

SW/S
COLUMN
BOTTOM OF 5TH
BRICK UP

FD SHI
N/S



O.D.O.T. DISTRICT 2 SURVEY OFFICE

PERSONNEL

REFERENCE NO. 56

SHEET 13 OF 26

NOTES LOEHRKE

H.C. CANTERBURY

R.C. HERMILLER

DATE 6-17-94

WEATHER Hot

TEMP. +94

ROUTE S.R. 19

COUNTY SENECA

TOWNSHIP Scipio

SECTION 16

T2 N R 16 E

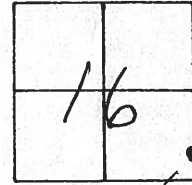
TYPE MONUMENT P.K. / WASHER

ON SURFACE - ~~BELOW~~ Yes

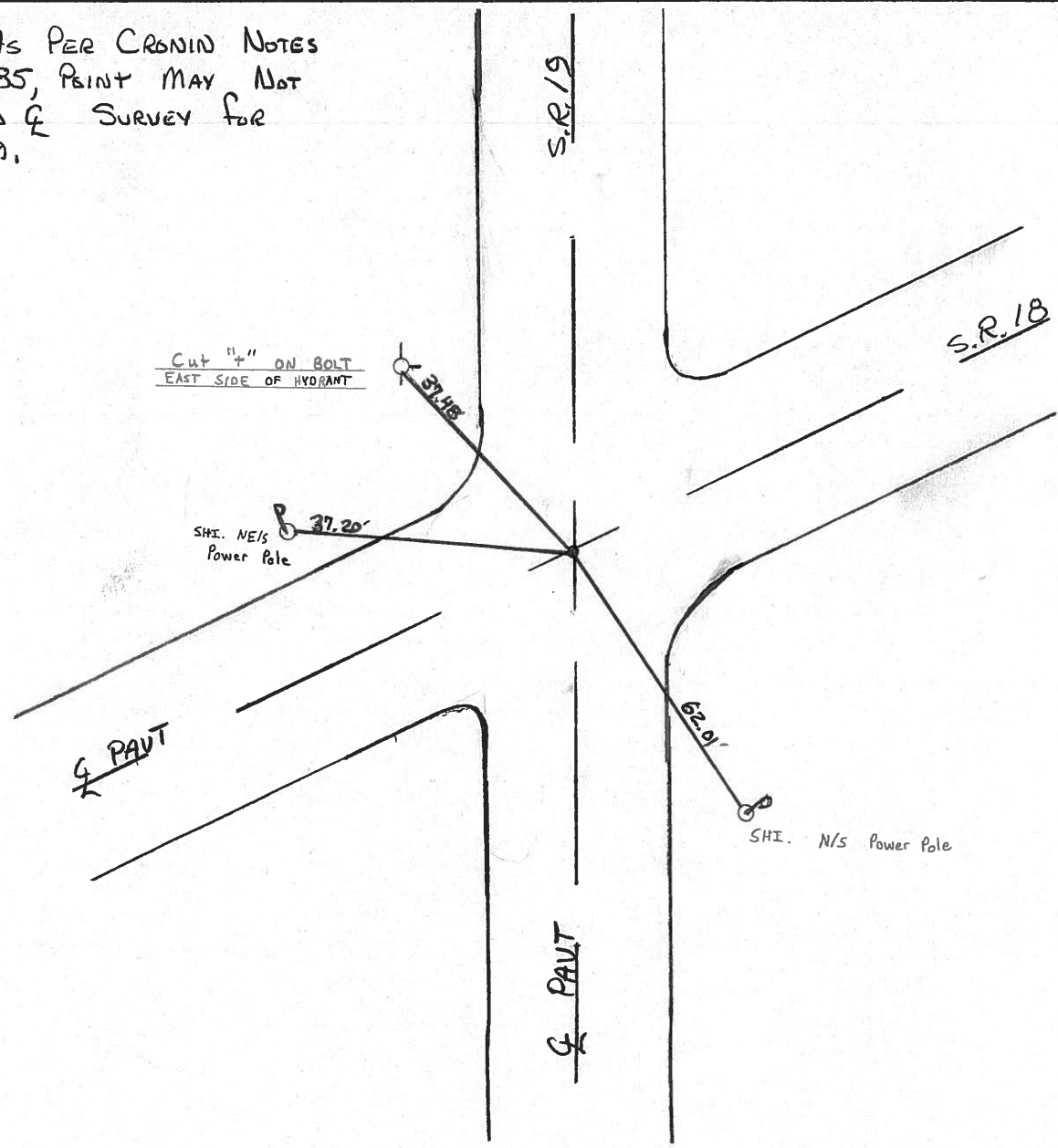
LEFT - Q PAV'T. - RIGHT ON Q PAV'T. S.R. 18
3 RT Q PAV'T. S.R. 19

TO EDGE PAVEMENT

S.L.M. 484+51



NOTE: AS PER CRONIN NOTES
8/7/85, POINT MAY NOT
BE ON Q SURVEY FOR
S.R. 19.



O.D.O.T. DISTRICT 2 SURVEY OFFICE (USE ONLY)

PERSONNEL	REFERENCE NO.	<u>56</u>	SHEET	<u>13</u>	OF	<u>26</u>
NOTES	CHENEY	DATE	<u>7-2-93</u>	ROUTE	<u>SR 19</u>	
H.C.	<u>RIPPLE</u>	WEATHER	<u>CLOUDY</u>	COUNTY	<u>SENECA</u>	
R.C.	<u>BARBOUR</u>	TEMP.	<u>85°F</u>	TOWNSHIP	<u>SCIPIO</u>	
	<u>GEYMAN</u>			SECTION	<u>16</u>	
				T	<u>2</u>	R
					<u>16</u>	E

TYPE MONUMENT PK/WASHER

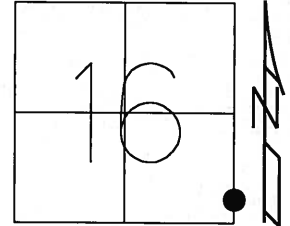
~~ON SURFACE~~ - BELOW 1"

~~LEFT~~ - Q PAV'T - RIGHT 0.5'

10.5' TO RT EDGE PAVEMENT

S.L.M. 484+51

Grid: Northing: 532175.1305 Easting: 1826480.8463



RECORD:
P.I. Δ=00°13' RT
STA. 403+86.66
6-16-1971

NOTE:
SR 18=REF 72

SET PK/WASHER
8-27-1993, RCC

FD PK/WASHER
1.5" BELOW
GPS, REF 72
05-08-14,
JLL, EBW, PJG

1.6' UP
NE/S
OLD GAS
STATION
FRAME BLDG.

FD "+" IN OLD
CONC. ISLAND

SET SHI
E/S

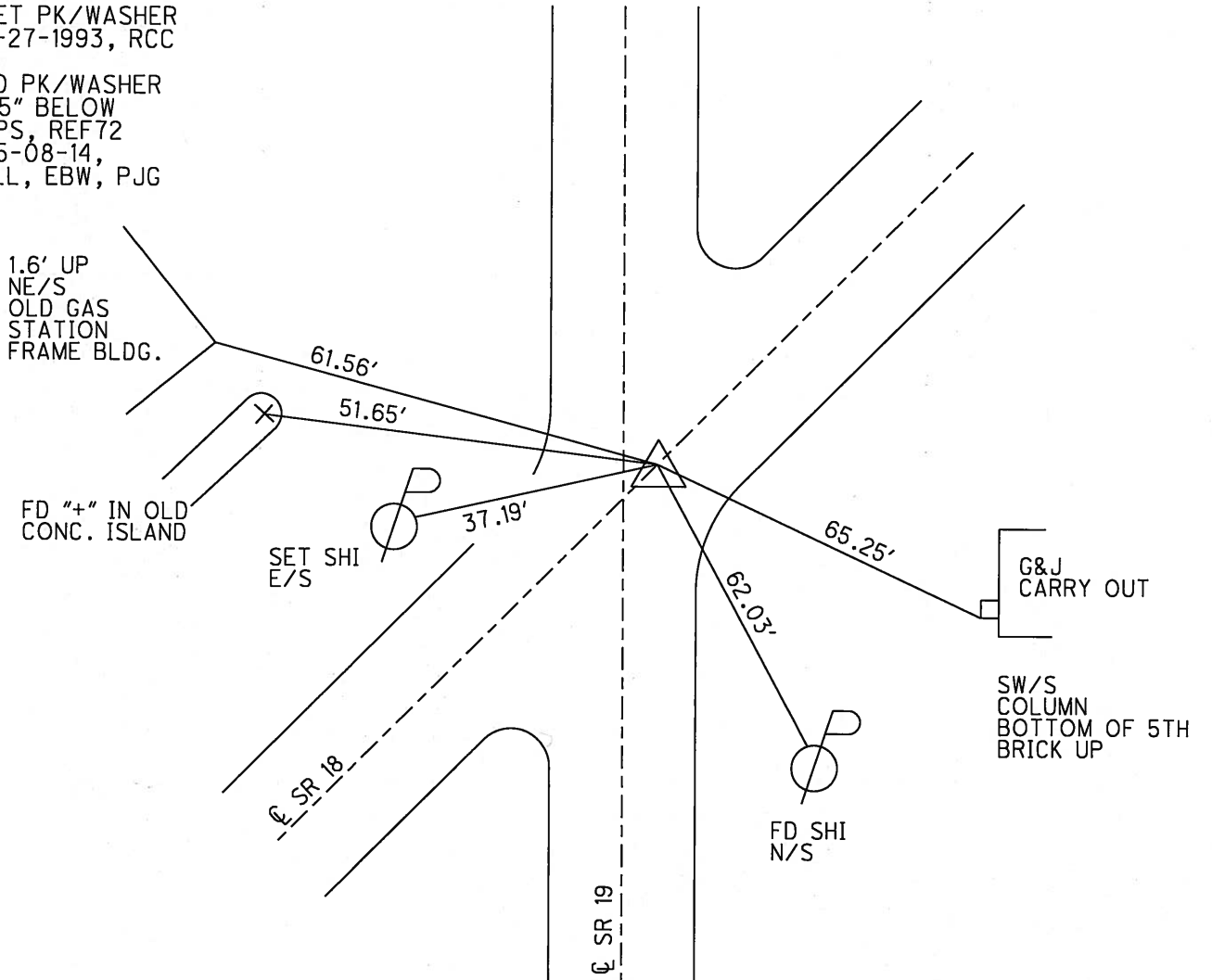
G&J
CARRY OUT

SW/S
COLUMN
BOTTOM OF 5TH
BRICK UP

FD SHI
N/S

SR 18

SR 19



O.D.O.T. DISTRICT 2 SURVEY OFFICE (13)

PERSONNEL

REFERENCE NO. 56

SHEET _____ OF _____

NOTES Cronin

8/7/85

H.C. Ripple

DATE Drawn 11/29/84

ROUTE 19

R.C. Barbour

WEATHER cloudy

COUNTY Seneca

Geyman

TEMP. 74°

TOWNSHIP Scipio

SECTION 16

T 2 N R 16 E

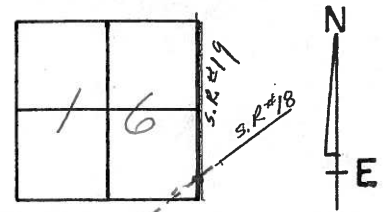
TYPE MONUMENT P.K.

ON SURFACE - BELOW ON SURFACE

LEFT - ☉ PAV'T. - RIGHT ☉ ON S.R.#18 - 3' Rt. E Pavmt.

TO EDGE PAVEMENT S.R.#19

S.L.M. _____



POINT MAY NOT BE ON
LINE ON S.R.#19

cut in conc.
PUMP ISLAND

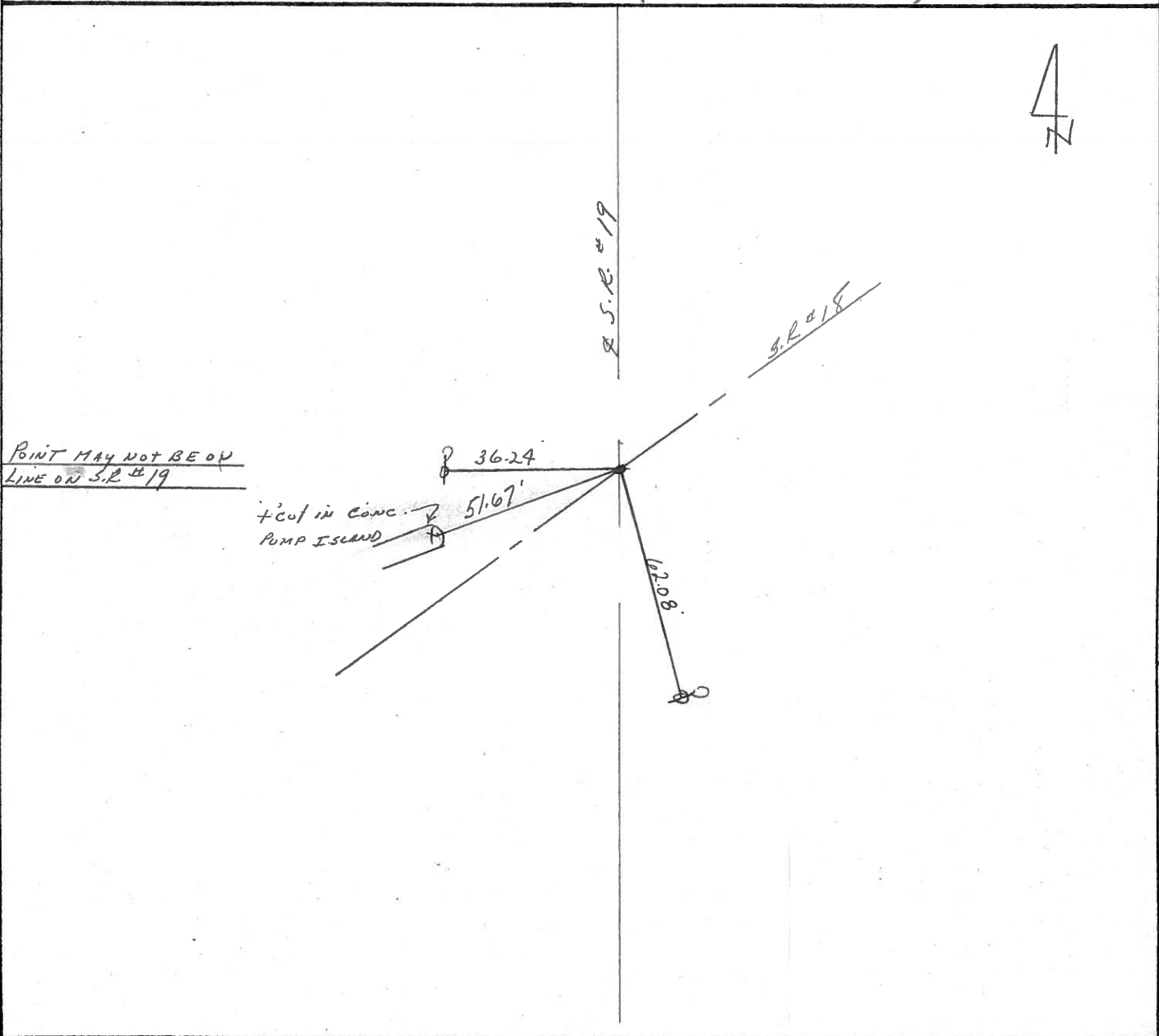
36.24

51.67'

10.08

S.R.#19

S.R.#18



PERSONNEL	TITLE	PERSONNEL	TITLE	COUNTY	DATE	WEATHER	TEMP	JOB NO.
Ash				Seneca	drawn 10/13/72			
Cronin				S. R. #19				
Ripple				SEC. F				
Anderson		Vinson						

DESCRIPTION Ties for Control Points - Republic

