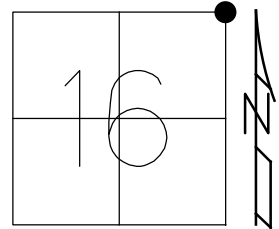


O.D.O.T. DISTRICT 2 SURVEY OFFICE (USE ONLY)

PERSONNEL _____ REFERENCE NO. 58 SHEET 6 OF 32
 NOTES LEU DATE 3/12/18 ROUTE SR 19
 H.C. O'DONNELL WEATHER CLOUDY COUNTY SENECA
 R.C. AUBLE TEMP. 31° TOWNSHIP SCIPIO
 DWG BY MILLER PID 102817 SECTION 16
 T 2 N R 16 E

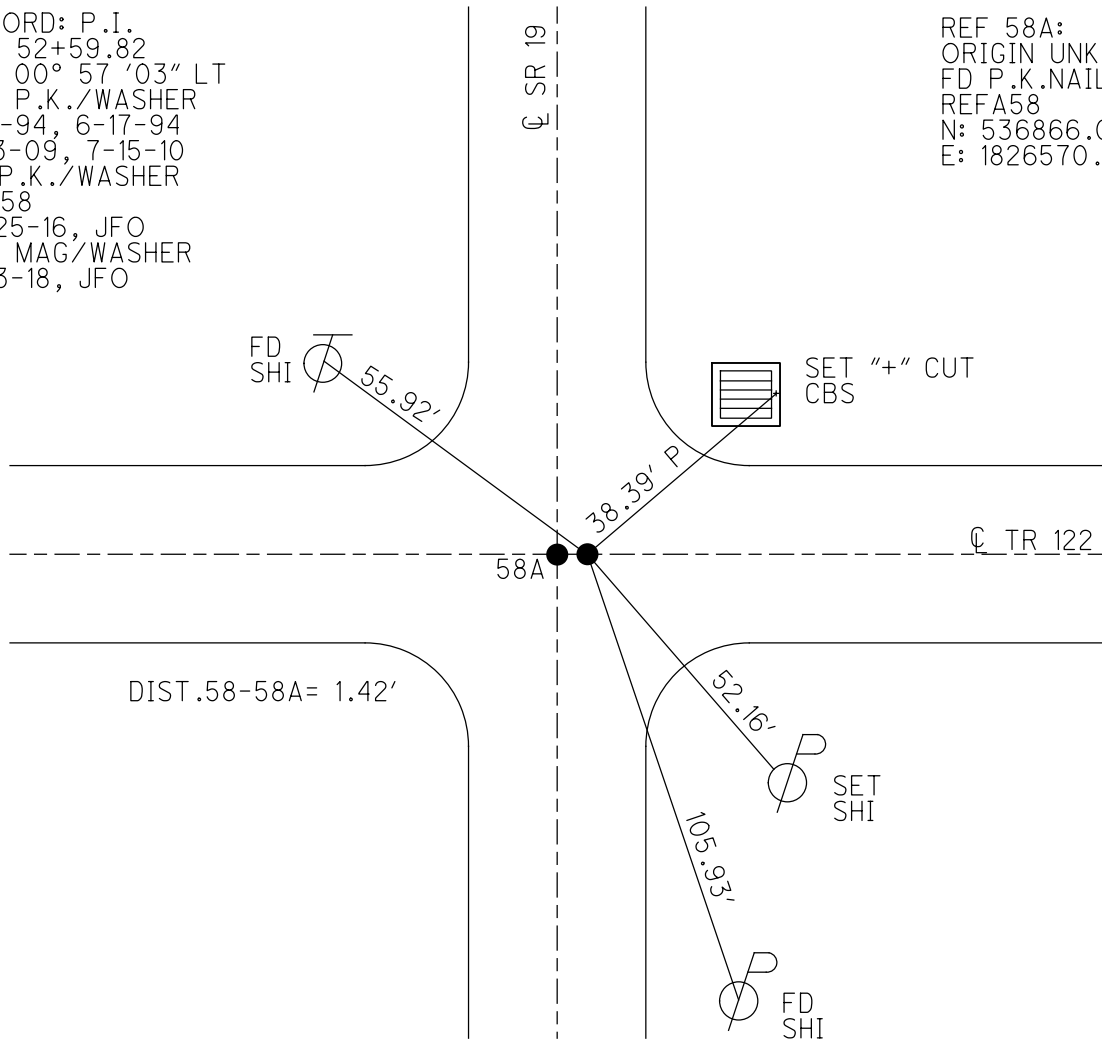
TYPE MONUMENT P.K./WASHER
 ON SURFACE - ~~BELOW~~ ON
 OFFSET CL PAVEMENT 2.8' LT : RT
- TO - EDGE PAVEMENT
 STATION: 531+62.23



HORIZ.DATUM: NAD83(2011) GEOID: NAVD88 2012A
 GRID: NORTHING: 536866.104 EASTING: 1826572.328

RECORD: P.I.
 STA 52+59.82
 $\Delta = 00^\circ 57' 03''$ LT
 SET P.K./WASHER
 8-9-94, 6-17-94
 7-13-09, 7-15-10
 FD P.K./WASHER
 REF58
 10-25-16, JFO
 SET MAG/WASHER
 10-3-18, JFO

REF 58A:
 ORIGIN UNKNOWN
 FD P.K.NAIL
 REFA58
 N: 536866.027
 E: 1826570.908



O.D.O.T. DISTRICT 2 SURVEY OFFICE (USE ONLY)

PERSONNEL

REFERENCE NO. 58

SHEET 3 OF 24

NOTES MOSER

DATE 07-13-09

ROUTE SR 19

H.C. BARNHISEL

WEATHER HOT

COUNTY SENECA

R.C. MOSER

TEMP. 75°

TOWNSHIP SCIPIO

SECTION 16

T 2 N R 16 E

TYPE MONUMENT PK/WASHER

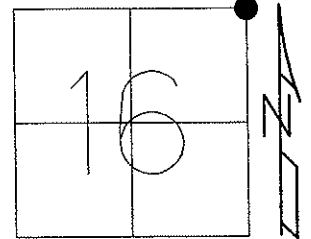
ON SURFACE - BELOW ON

LEFT - ϕ PAV'T - RIGHT 1.5'

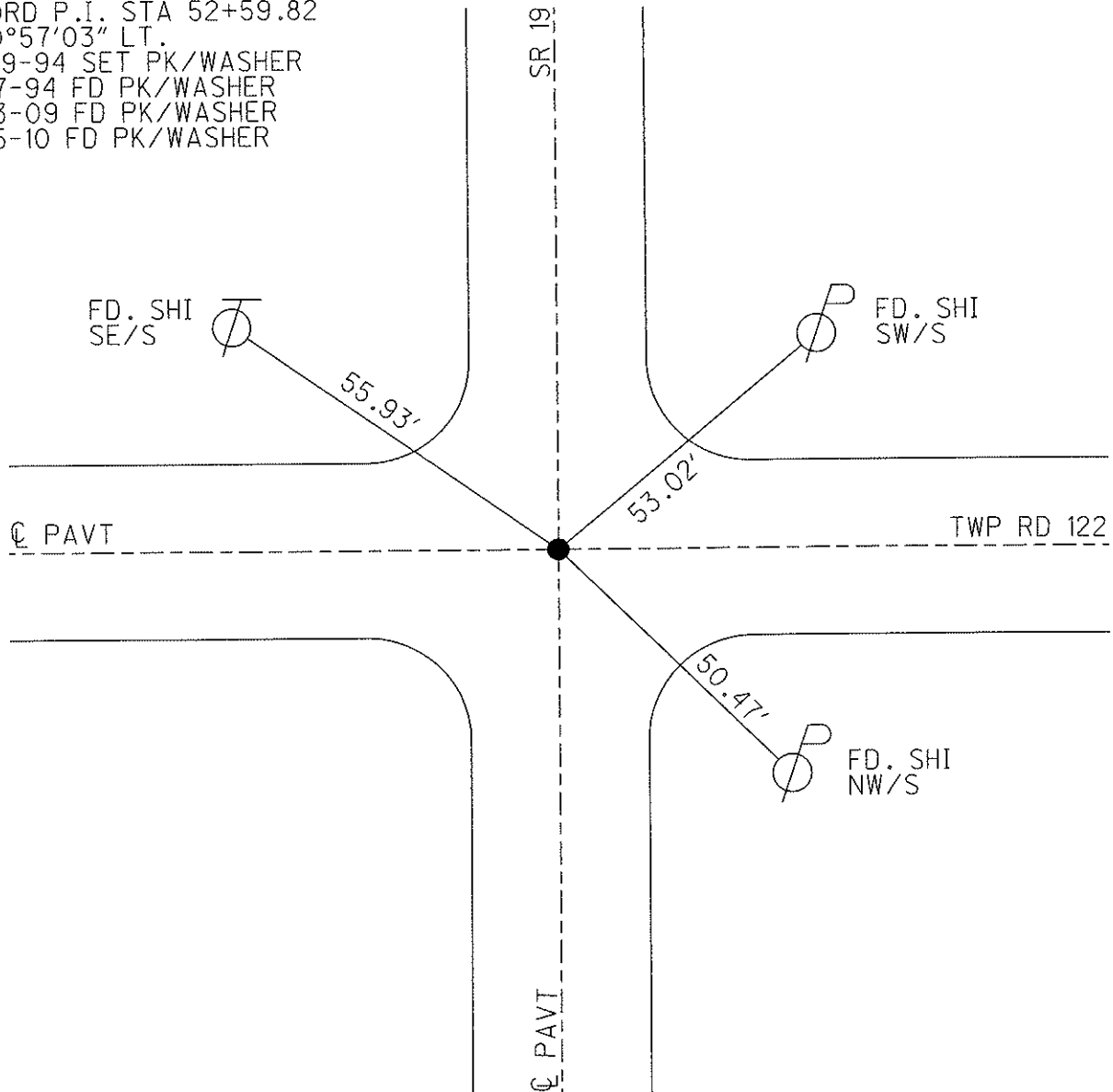
TO EDGE PAVEMENT

S.L.M. 531+49

Grid: Northing: _____ Easting: _____



RECORD P.I. STA 52+59.82
 $\Delta=00^{\circ}57'03''$ LT.
 08-09-94 SET PK/WASHER
 06-17-94 FD PK/WASHER
 07-13-09 FD PK/WASHER
 07-15-10 FD PK/WASHER



O.D.O.T. DISTRICT 2 SURVEY OFFICE

PERSONNEL _____

REFERENCE NO. 58

SHEET 15 OF 26

NOTES LOEHRKE

H.C. CANTERBURY

R.C. HERMILLER

DATE 6-17-94

WEATHER HOT

TEMP. +95

ROUTE S.R. 19

COUNTY SENECA

TOWNSHIP Scipio

SECTION 16

T2 N R 16 E

TYPE MONUMENT Fd. P.K./WASHER

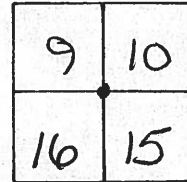
Set P.K./washer
8-9-94 C.A.C.

ON SURFACE - ~~BELOW~~ Yes

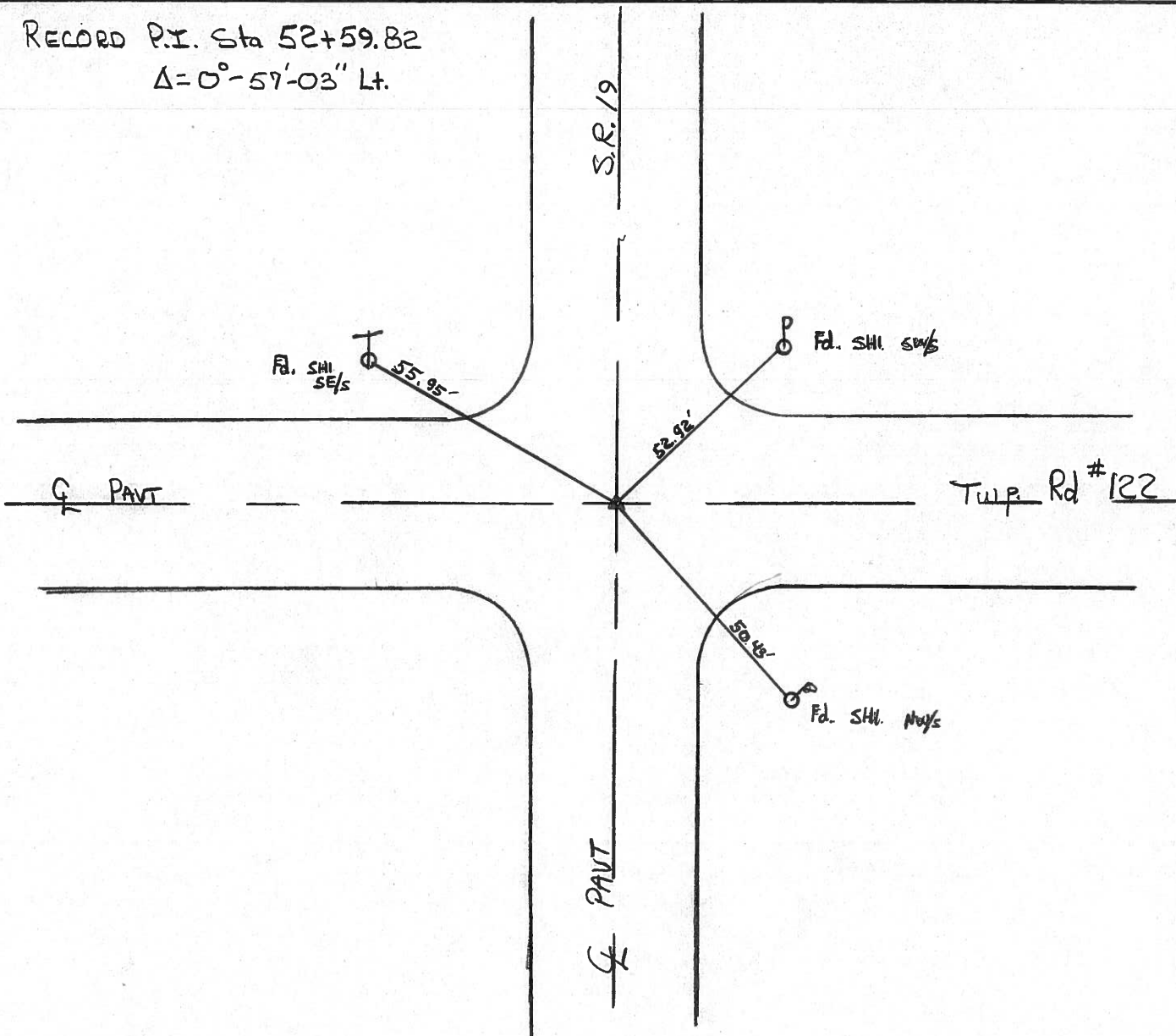
~~LEFT - & PAV'T. - RIGHT~~ Yes

TO EDGE PAVEMENT

S.L.M. 531+49



RECORD P.I. Sta 52+59.82
 $\Delta = 0^\circ - 57' - 03''$ Lt.



O.D.O.T. DISTRICT 2 SURVEY OFFICE

(15)

PERSONNEL

REFERENCE NO. 58

SHEET _____ OF _____

NOTES Cronin

H.C. Ripple

R.C. BARBOUR

GEYMAN

DATE 8/7/85

DATE Drown 11/29/84

WEATHER Cloudy

TEMP. 74°

ROUTE #19

COUNTY Seneca

TOWNSHIP Scipio

SECTION 9, 10, 15, 16

T 2 N R 16 E

TYPE MONUMENT Set P.K. WASHER AND P.K. WASHER

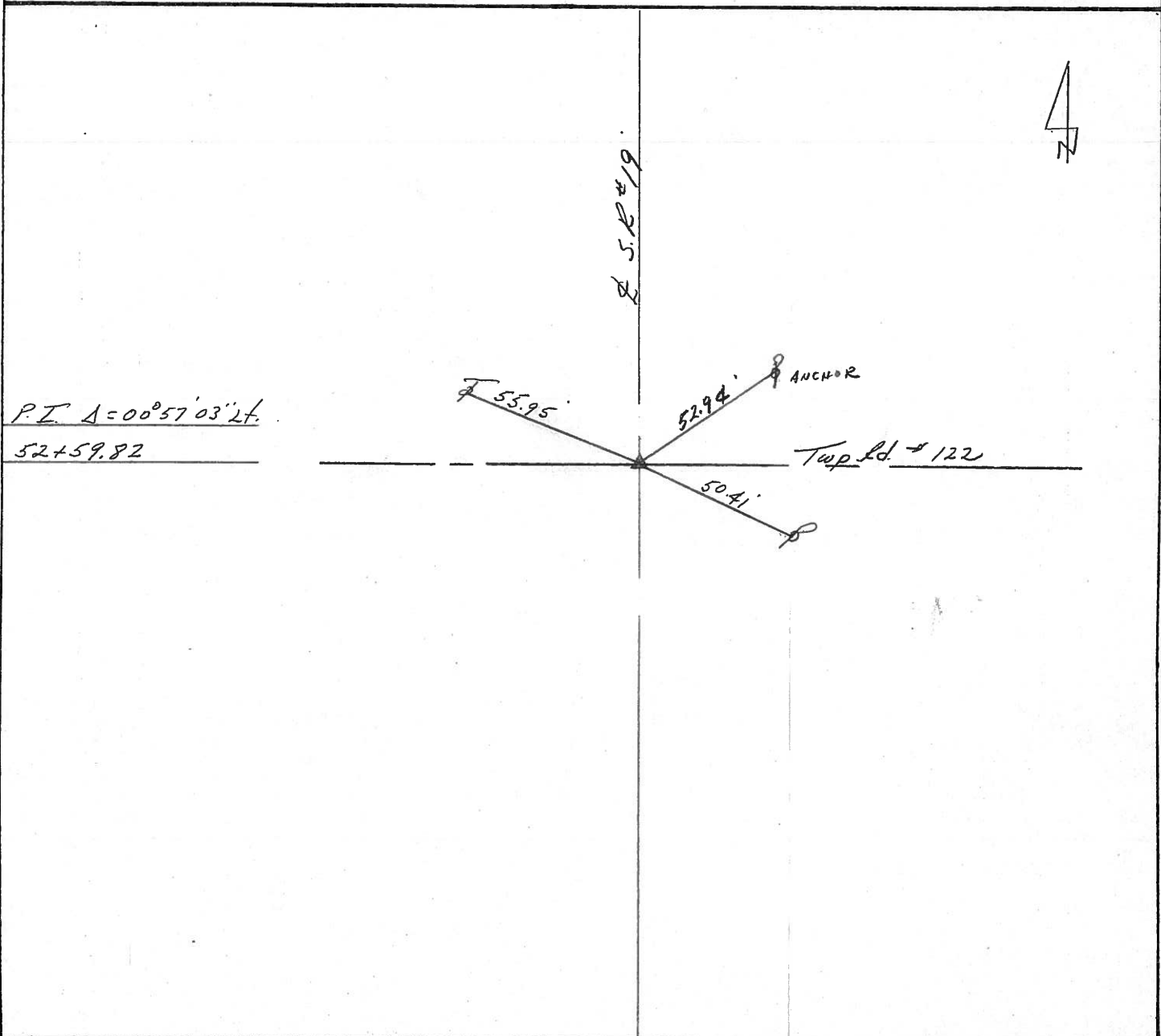
ON SURFACE - BELOW Atop 2 R.R. spikes

LEFT - ☉ PAV'T. - RIGHT ☉ PAV'T.

TO _____ EDGE PAVEMENT

S.L.M. _____

9	10
16	15



PERSONNEL TITLE PERSONNEL TITLE

Ash _____ COUNTY Seneca

Cranin _____ S. R. #19

Ripple _____ WEATHER

Anderson _____ Vinson SEC. I

DESCRIPTION Ties for Control Points - Republic North

LEFT CENTER LINE RIGHT

JOB NO.

Did not make temp. corrections

Scipio Twp Tied in 5/18/72 Temp 78°

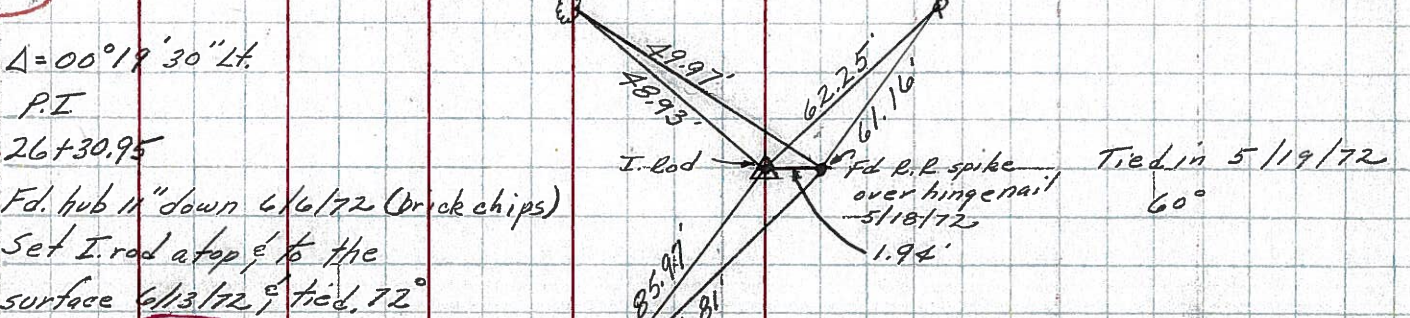


$\Delta = 00^\circ 57' 03''$ Lt. P.I. 52+59.82

Fd. R.R. spike 4" down Set small R.R. spike atop, & to the surface #58

57-A

Scipio Twp Tied in 5/19/72 60°



$\Delta = 00^\circ 19' 30''$ Lt. P.I. 26+30.95

Fd. hub 11" down 6/6/72 (brick chips) Set I. rod atop, & to the surface 6/13/72, tied, 72° #57

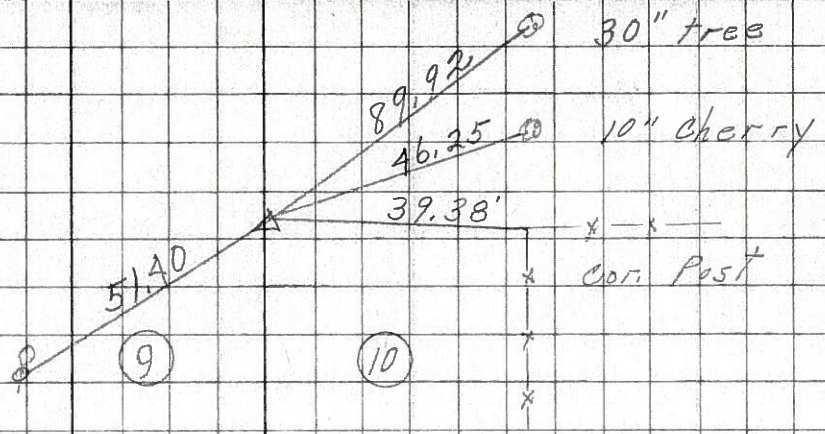
PERSONNEL	TITLE	PERSONNEL	TITLE	COUNTY	DATE	WEATHER	TEMP.
Schneider				Seneca	7-30-69	Fair	70
Mosser				S. R. 19			
Barbour				SEC. Republic North			
Potts							

DESCRIPTION: Ties for Control Points

59

78+17.65
 $\Delta = 0^\circ 27' RT$
 R.R. spk. 4" down

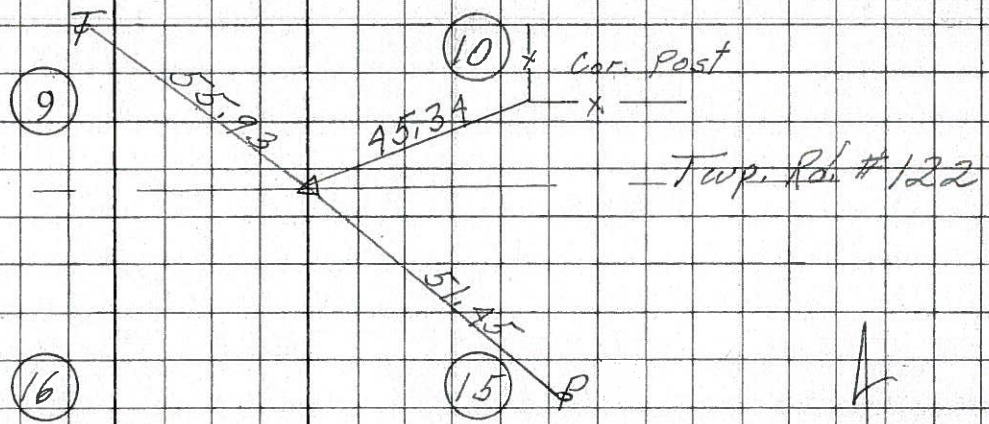
8266



58

52+59.82
 $\Delta = 0^\circ 57' 03" LT$
 R.R. spk. 4 1/2" down
 set small spk. on top

8265



57-A

30" Oak
 Fd. Hinge Nail on surface
 2 - small spks.
 26+30.95
 $\Delta = 0^\circ 19' 38" LT$

8264

