

O.D.O.T. DISTRICT 2 SURVEY OFFICE (USE ONLY)

PERSONNEL

REFERENCE NO. 59

SHEET 7 OF 32

NOTES LEU

DATE 3/12/18

ROUTE SR 19

H.C. O'DONNELL

WEATHER PARTLY CLOUDY

COUNTY SENECA

R.C. AUBLE

TEMP. 33°

TOWNSHIP SCIPIO

SECTION 9

DWG BY MILLER PID 102817

T 2 N R 16 E

TYPE MONUMENT MAG/WASHER

ON SURFACE - ~~BELOW~~ ON

OFFSET \varnothing PAVEMENT ON ~~LT:RT~~

10.2' TO RT EDGE PAVEMENT

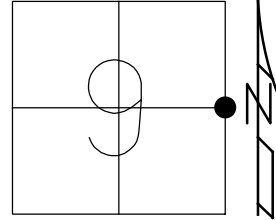
STATION: 557+54.58

HORZ.DATUM: NAD83(2011)

GEOID: NAVD88 2012A

GRID: NORTHING: 539458.466

EASTING: 1826575.127



SET TACK
1.5' UP COR
4x4" WOOD
POST #1529

MB

112.16'

FD SHI
16" PINE

59.23'

SET
SHI

55.25'

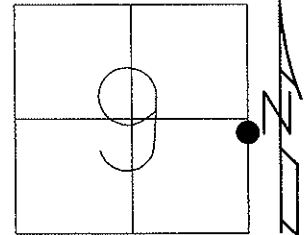
\varnothing SR 19

RECORD: P.I.
STA 78+47.65
 $\Delta = 00^\circ 27' RT$
REF. FB #58, PG 3
POINT IS 5'± SOUTH
OF E-W SEC. LINE
FD LG R.R. SPIKE
7-13-09, MB
FD LG R.R. SPIKE
7-15-10
FD MAG/WASHER
REF59
10-25-16, JFO
SET MAG/WASHER
10-3-18, JFO

O.D.O.T. DISTRICT 2 SURVEY OFFICE (USE ONLY)

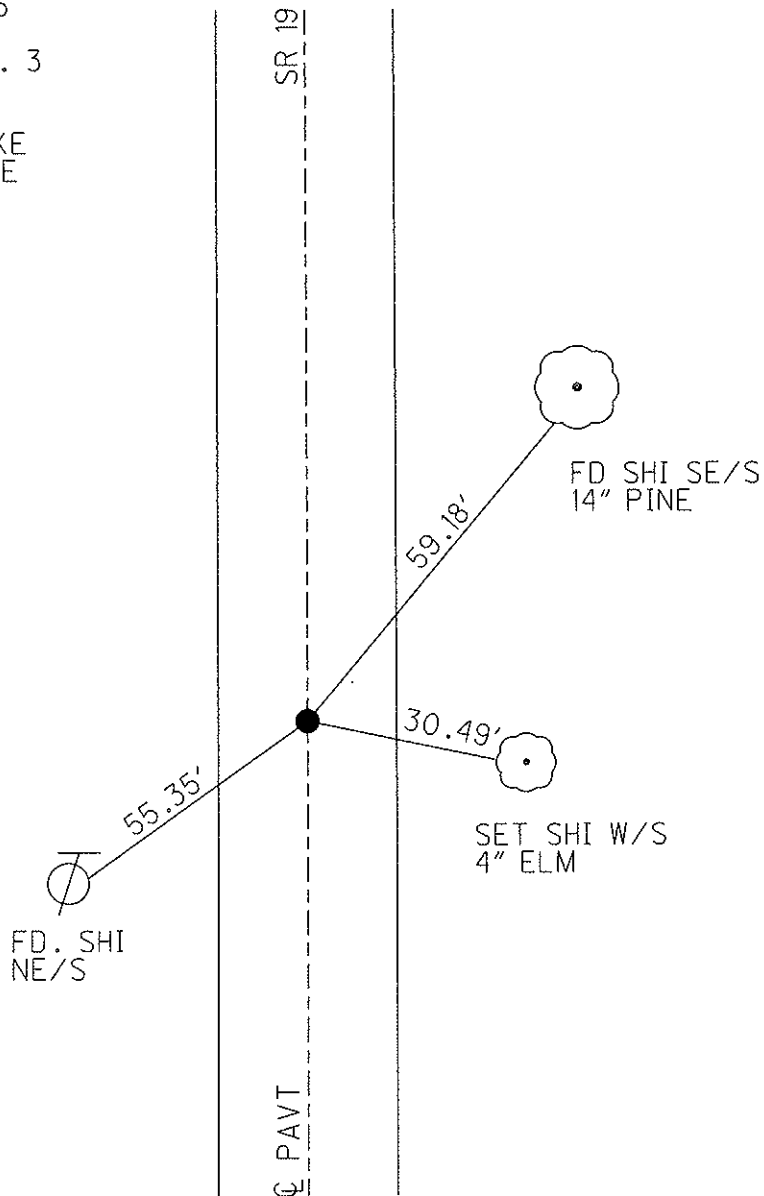
PERSONNEL	REFERENCE NO. <u>59</u>	SHEET <u>4</u> OF <u>24</u>
NOTES <u>MOSER</u>	DATE <u>07-13-09</u>	ROUTE <u>SR 19</u>
H.C. <u>BARNHISEL</u>	WEATHER <u>HOT</u>	COUNTY <u>SENECA</u>
R.C. <u>MOSER</u>	TEMP. <u>75°</u>	TOWNSHIP <u>SCIPIO</u>
		SECTION <u>9</u>
		T <u>2</u> N R <u>16</u> E

TYPE MONUMENT LG R.R. SPIKE
 ON SURFACE - BELOW 2"
 LEFT - CL PAV'T - RIGHT ON
10.2' TO RT EDGE PAVEMENT
 S.L.M. 557+39



Grid: Northing: _____ Easting: _____

RECORD P.I. STA 78+47.65
 $\Delta=00^{\circ}27'$ RT.
 REF. FIELD BOOK #58, PG. 3
 POINT IS 5'± SOUTH
 OF E-W 1/2 SEC. LINE
 07-13-09 FD. LG R.R. SPIKE
 07-15-10 FD. LG R.R. SPIKE



O.D.O.T. DISTRICT 2 SURVEY OFFICE

PERSONNEL

REFERENCE NO. 59

SHEET 16 OF 26

NOTES LOEHRKE

H.C. CANTERBURY

R.C. HERMILLER

DATE 6-17-94

WEATHER HOT

TEMP. +95

ROUTE S.R. 19

COUNTY SENECA

TOWNSHIP Scipio

SECTION 9

T.C. N.R. 16 E

TYPE MONUMENT Lg R.R. Spike

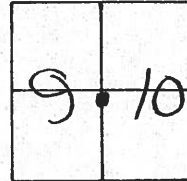
ON SURFACE - ~~BELOW~~ Yes

~~LEFT - & PAV'T. - RIGHT~~ Yes

10.2 TO RT EDGE PAVEMENT

S.L.M. 557+39

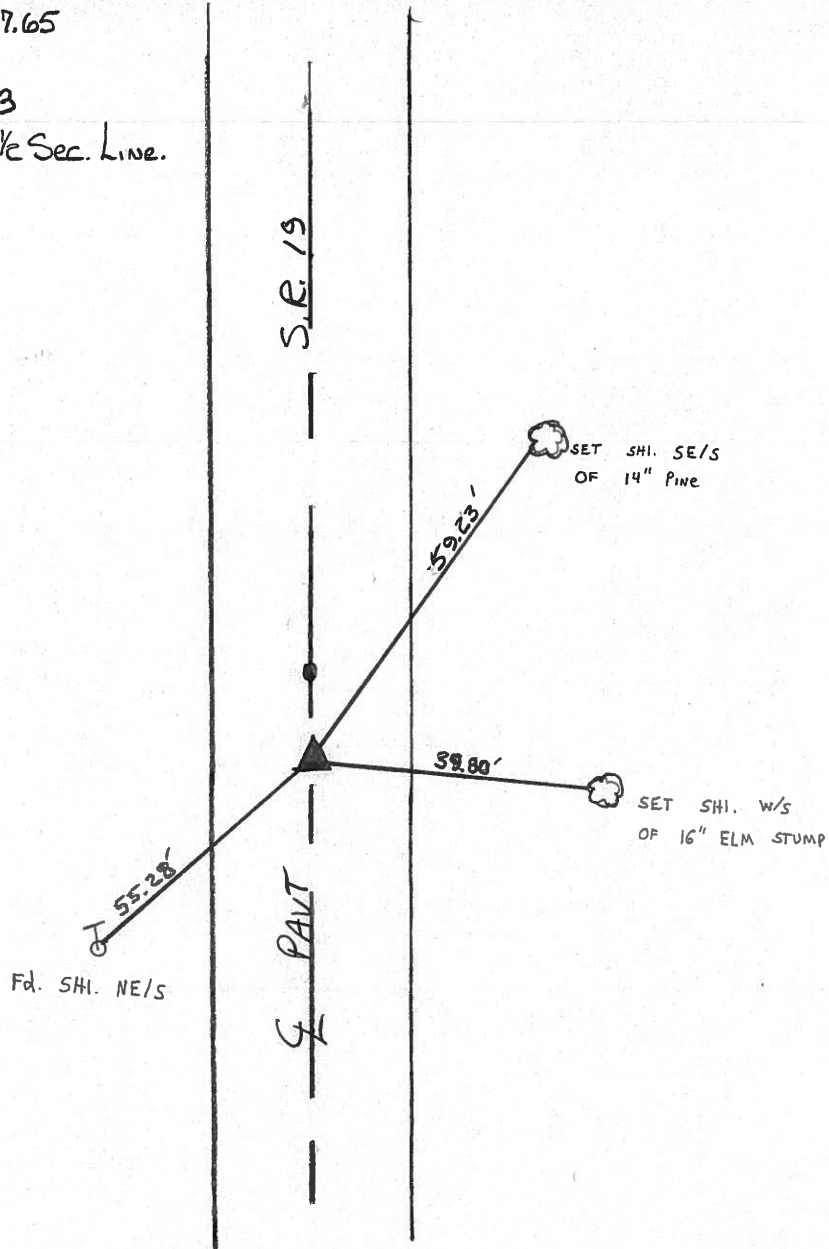
Set P.K. / washer
8-9-94 C.A.C.



RECORD P.I. Sta 78+47.65
 $\Delta = 0^\circ - 27' \text{ Rt.}$

REF. FIELD Book # 5B, Pg. 3

POINT is 5'± South of E-W 1/2 Sec. Line.



O.D.O.T. DISTRICT 2 SURVEY OFFICE

16

PERSONNEL

REFERENCE NO. 59

SHEET _____ OF _____

NOTES CRONIN

H.C. RIPPLE

R.C. BARBOUR

GEYMAN

DATE 8/7/85

WEATHER cloudy

TEMP. 78°

ROUTE 19

COUNTY SENECA

TOWNSHIP SCIPIO

SECTION 9

T 2 N R 16 E

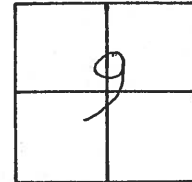
TYPE MONUMENT P.R. WASHER AT OP 2 R.R.

ON SURFACE - BELOW spikes - ON SURFACE

LEFT - ☉ PAINT - RIGHT ☉ PAINT

TO _____ EDGE PAVEMENT

S.L.M. _____

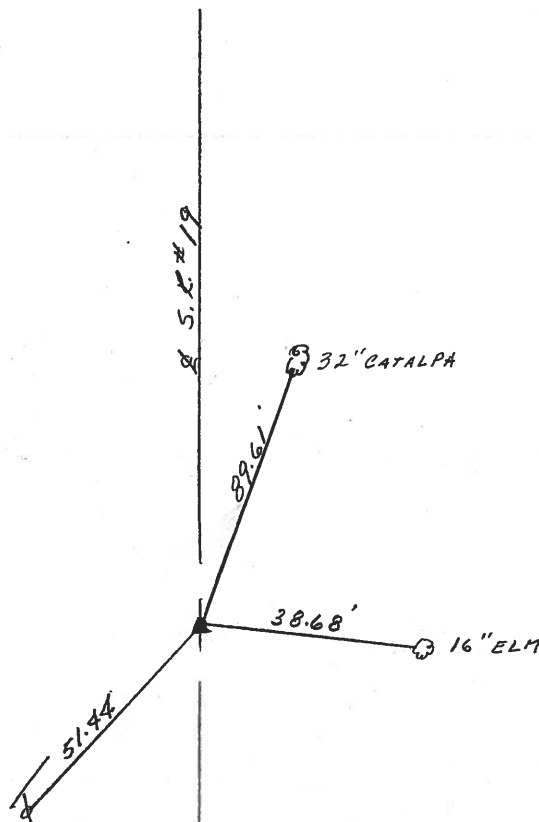


P.T. A = 00°27' Rt.

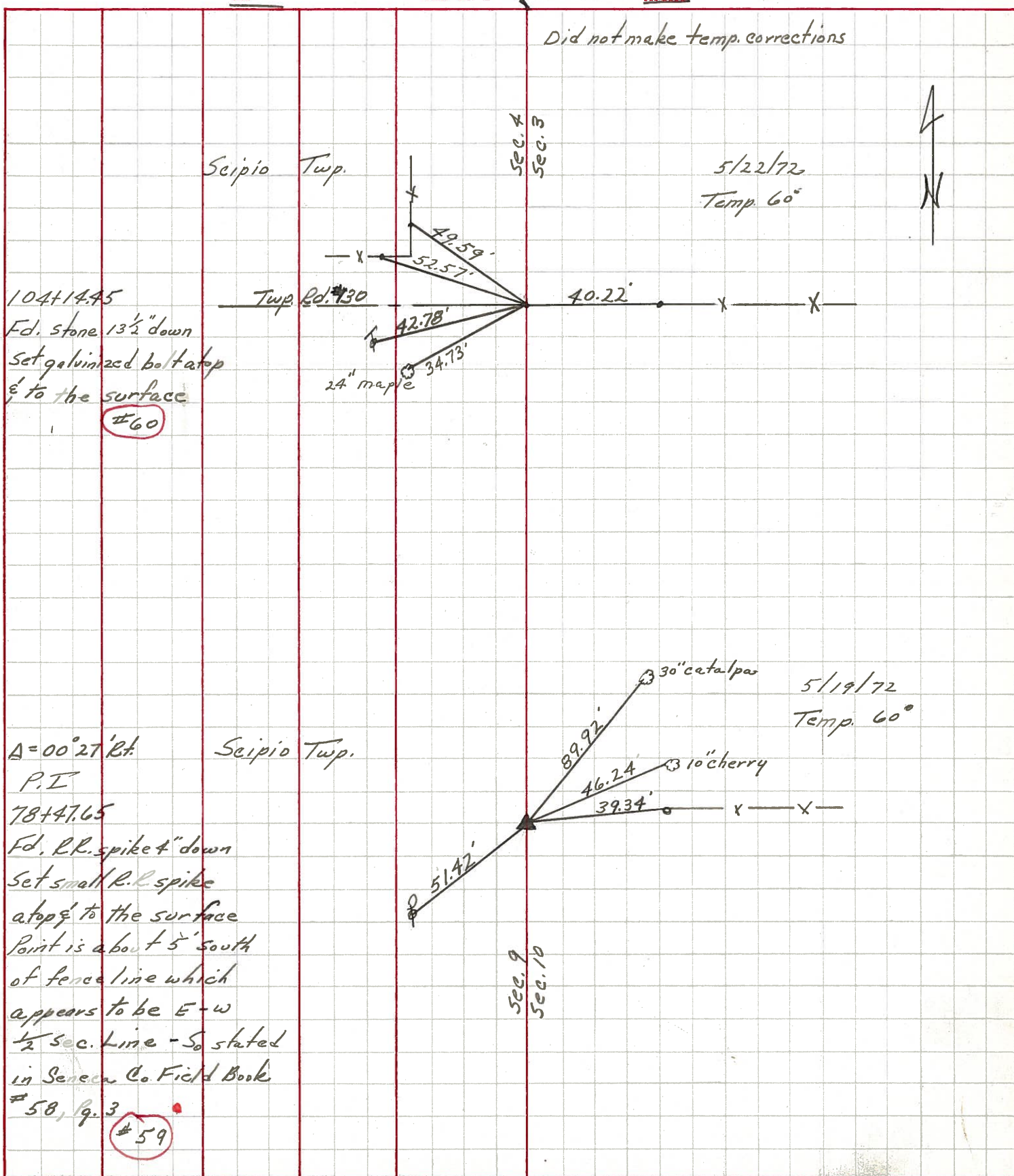
78+47.65

Ref. FIELD Bk. 58, Pg. 3

Point is 5'± S of E-W 1/2 Sec. Line



PERSONNEL	TITLE	PERSONNEL	TITLE	COUNTY	Seneca	Drawn	6/20/72
Ash				S. R.	#19	DATE	5/19 & 22/72
Cronin				WEATHER			
Ripple				TEMP.			
Anderson		Vinson		SEC.	I		
DESCRIPTION	Ties for Control Points - Republic North				JOB NO.		



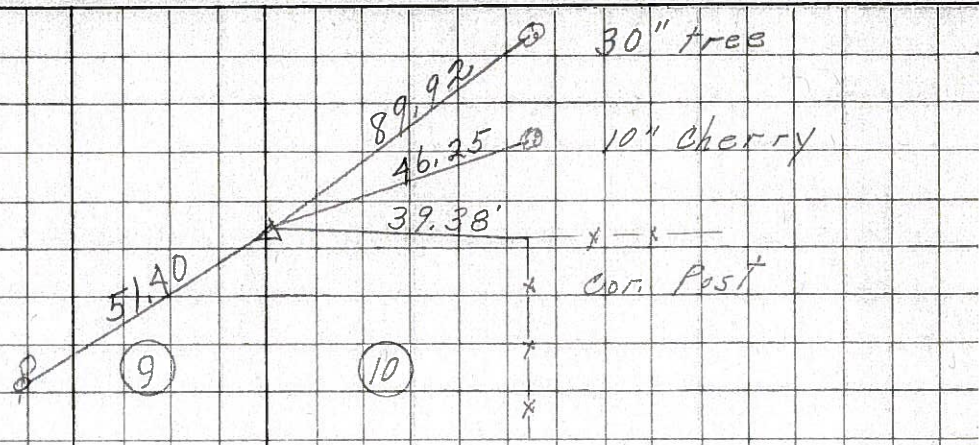
PERSONNEL	TITLE	PERSONNEL	TITLE	COUNTY	DATE	S. R.	WEATHER	TEMP.
Schneider				Seneca	7-30-69	19	Fair	70
Mosser								
Barbour								
Potts								

DESCRIPTION: Ties for Control Points JOB NO. _____

59

78+17.65
 $\Delta = 0^\circ 27' RT$
 R.R. spk. 4" down

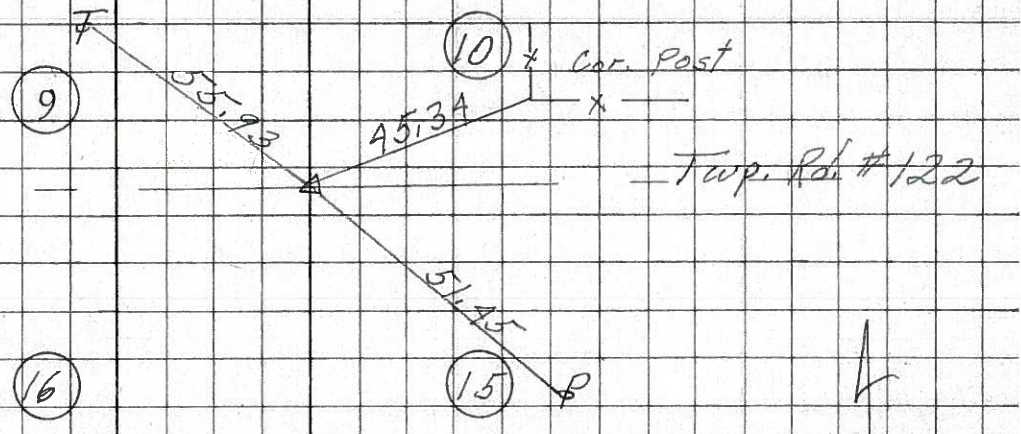
8266



58

52+59.82
 $\Delta = 0^\circ 57' 03" LT$
 R.R. spk. 4 1/2" down
 set small spk. on top

8265



57-A

Fd. Hinge Nail on surface
 2 - small spks.
 26+30.95
 $\Delta = 0^\circ 19' 30" LT$

8264

