

O.D.O.T. DISTRICT 2 SURVEY OFFICE (USE ONLY)

PERSONNEL

REFERENCE NO. 61 A

SHEET 10 OF 32

NOTES LOEHRKE
 H.C. CANTERBURY
 R.C. HERMILLER

DATE 7/21/94
 WEATHER CLOUDY
 TEMP. 85°

ROUTE SR 19
 COUNTY SENECA
 TOWNSHIP SCIPIO
 SECTION 3
 T 3 N R 16 E

DWG BY MILLER PID 102817

TYPE MONUMENT MAG NAIL

~~ON SURFACE~~ - BELOW ON

OFFSET \varnothing PAVEMENT ON LT : ~~RT~~

- TO - EDGE PAVEMENT

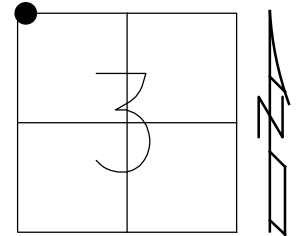
STATION: 641+51.79

HORZ.DATUM: NAD83(2011)

GEOID: NAVD88 2012A

GRID: NORTHING: 547854.610

EASTING: 1826656.264



RECORD:
 FD MAG NAIL
 REFB61
 10-3-18, JFO

DIST.
 61A-62= 16.32'
 61A-62A= 211.42'
 RECORD= 227.75'

