

O.D.O.T. DISTRICT 2 SURVEY OFFICE (USE ONLY)

PERSONNEL _____ REFERENCE NO. 65 SHEET 15 OF 32
 NOTES RHOADES DATE 3/14/18 ROUTE SR 19
 H.C. O'DONNELL WEATHER CLOUDY COUNTY SENECA
 R.C. RHOADES TEMP. 26° TOWNSHIP ADAMS
 DWG BY MILLER PID 102817 SECTION 28
 T 3 N R 16 E

TYPE MONUMENT P.K./WASHER

~~ON SURFACE~~ - BELOW 1"

OFFSET \varnothing PAVEMENT 1.2' \pm : RT

- TO - EDGE PAVEMENT

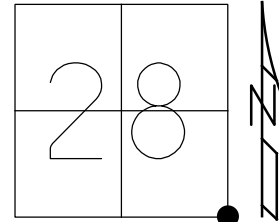
STATION: 694+86.88

HORZ. DATUM: NAD83(2011)

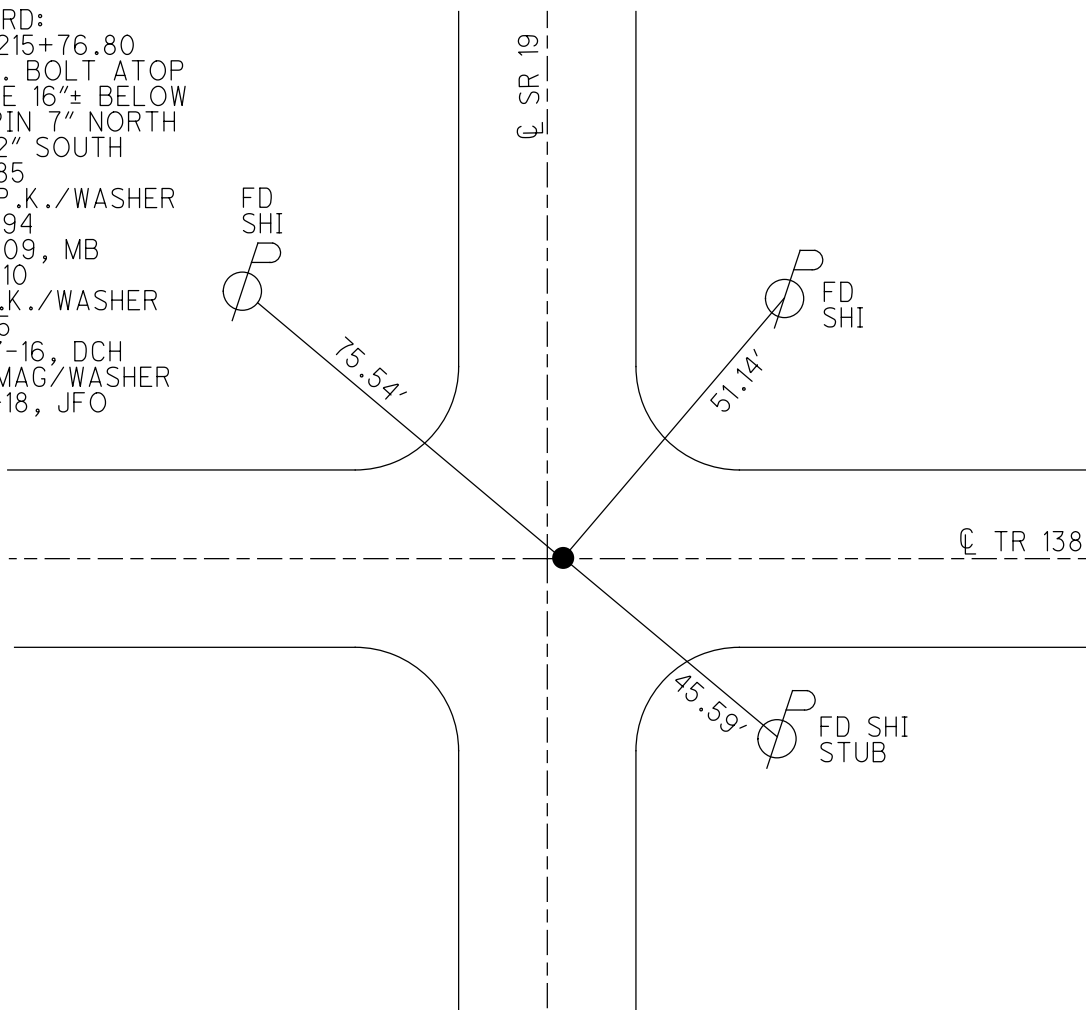
GEOID: NAVD88 2012A

GRID: NORTHING: 553168.642

EASTING: 1826846.690



RECORD:
 STA 215+76.80
 GALV. BOLT ATOP
 STONE 16"± BELOW
 FD IPIN 7" NORTH
 HUB 2" SOUTH
 8-8-85
 SET P.K./WASHER
 7-21-94
 7-14-09, MB
 7-15-10
 FD P.K./WASHER
 REF65
 10-27-16, DCH
 SET MAG/WASHER
 10-3-18, JFO



O.D.O.T. DISTRICT 2 SURVEY OFFICE (USE ONLY)

PERSONNEL

REFERENCE NO. 65

SHEET 11 OF 24

NOTES MOSER

DATE 07-14-09

ROUTE SR 19

H.C. BARNHISEL

WEATHER HOT

COUNTY SENECA

R.C. MOSER

TEMP. 80°

TOWNSHIP ADAMS

SECTION 28

T 3 N R 16 E

TYPE MONUMENT _____ PK/WASHER _____

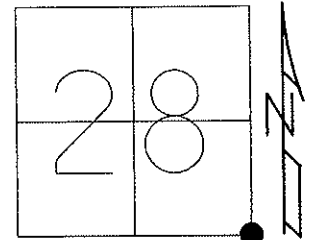
ON SURFACE - BELOW _____ ON _____

LEFT - C PAV'T - RIGHT _____ 1.2' _____

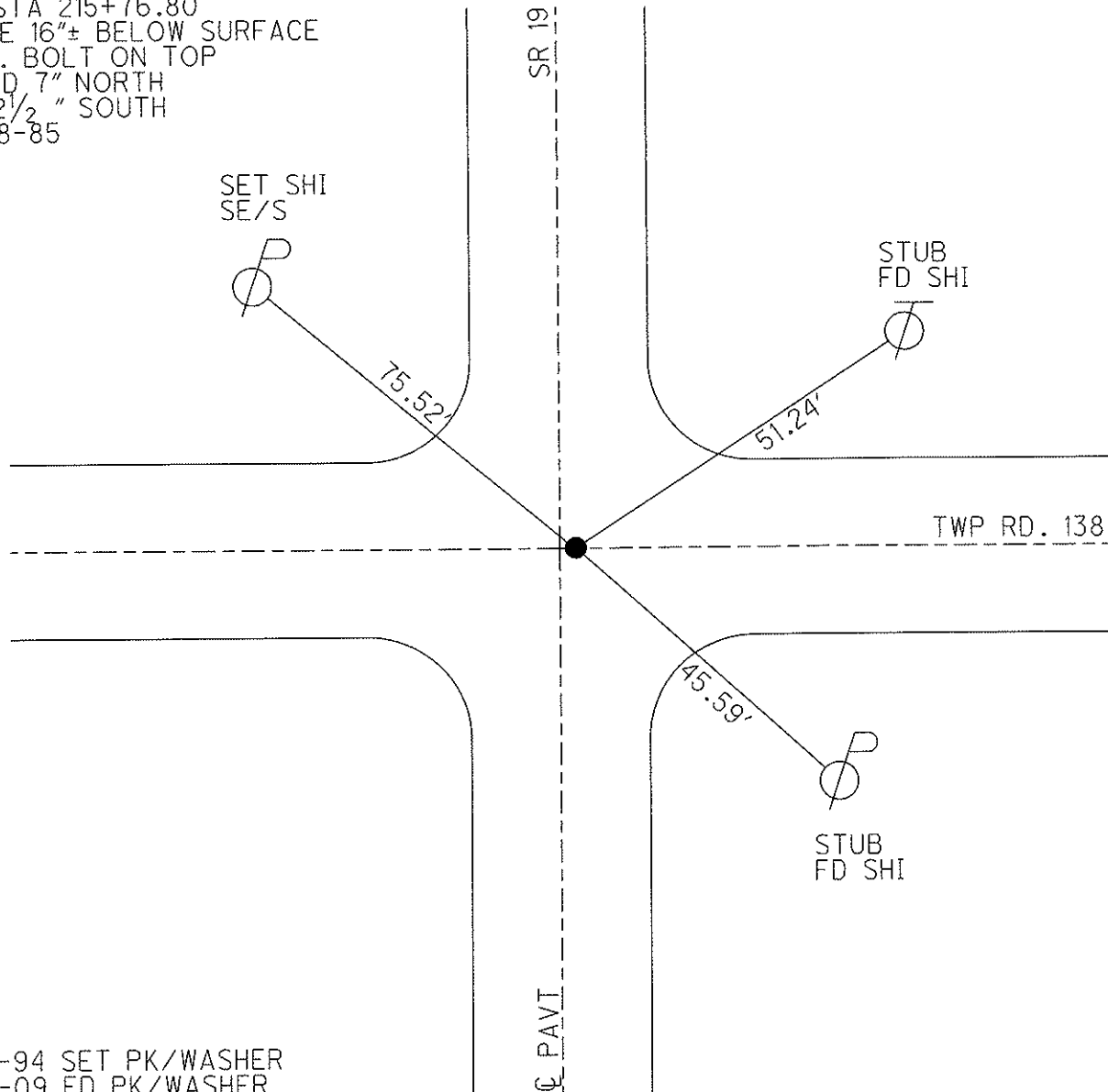
_____ TO _____ EDGE PAVEMENT

S.L.M. _____ 694+73 _____

Grid: Northing: _____ Easting: _____



REC STA 215+76.80
 STONE 16"± BELOW SURFACE
 GALV. BOLT ON TOP
 I. ROD 7" NORTH
 HUB 2 1/2" SOUTH
 08-08-85



07-21-94 SET PK/WASHER
 07-14-09 FD PK/WASHER
 07-15-10 FD PK/WASHER

O.D.O.T. DISTRICT 2 SURVEY OFFICE

PERSONNEL _____

REFERENCE NO. 65

SHEET 23 OF 24

NOTES LOEHRKE

H.C. CANTERBURY

R.C. HERMILLER

DATE 6-18-94

WEATHER Hot

TEMP. +90

ROUTE S.R. 19

COUNTY Seneca

TOWNSHIP ADAMS

SECTION 28

T.3 N R.16 E

TYPE MONUMENT Pk./WASHER

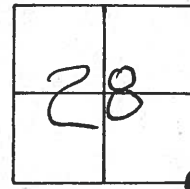
Set P.K./washer
7-21-94 m.e.

ON SURFACE - BELOW Yes

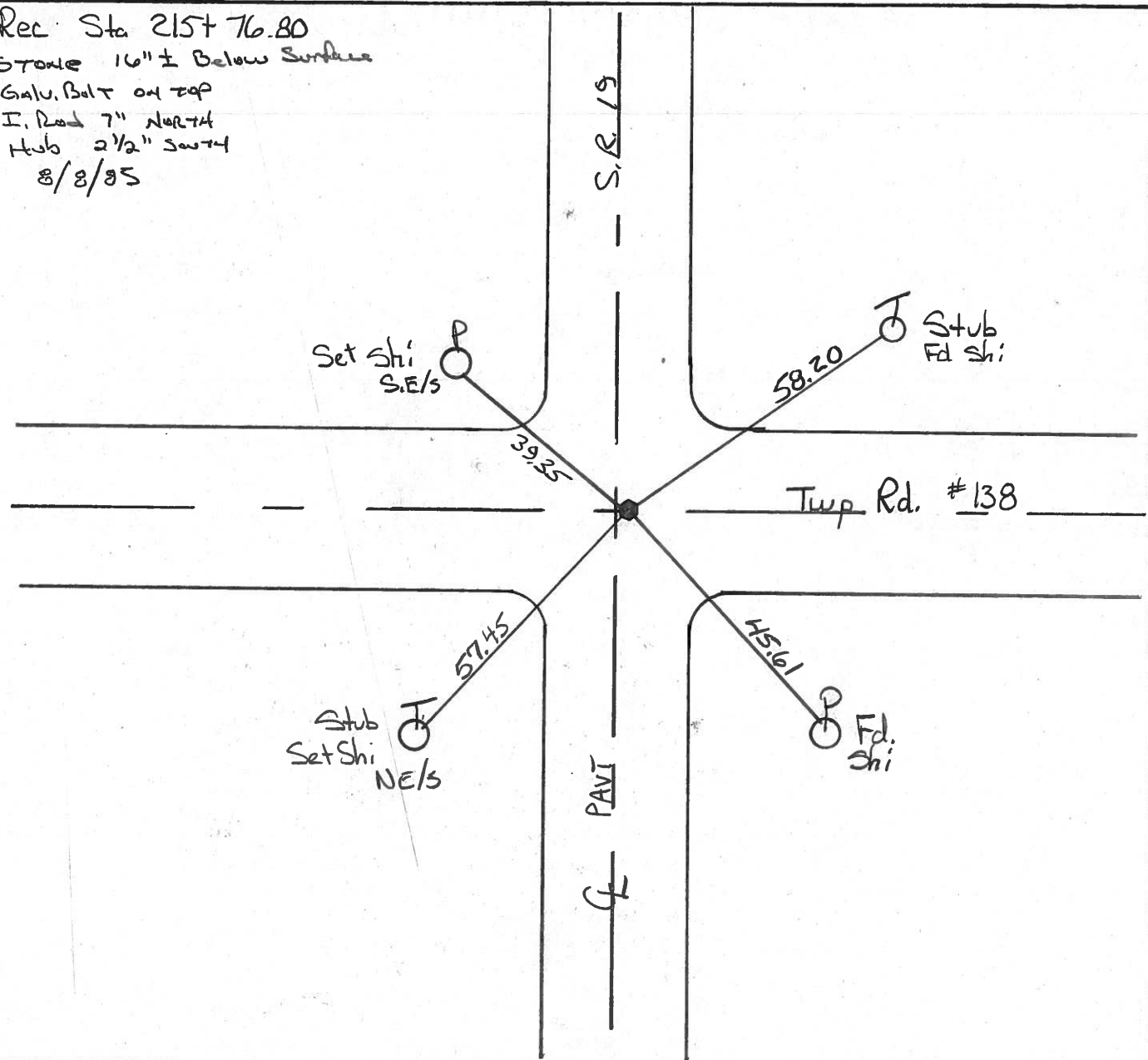
LEFT - & PAV'T. - RIGHT 1.2'

TO _____ EDGE PAVEMENT

S.L.M. 694 + 73



Rec. Sta 215+76.80
Stone 16" ± Below Surface
Galv. Bolt on top
I. Rod 7" North
Hub 2 1/2" South
8/8/95



O.D.O.T. DISTRICT 2 SURVEY OFFICE

(23)

PERSONNEL

REFERENCE NO. 65

SHEET OF

NOTES CRONIN

H.C. RIPPLE

R.C. BARBOUR

GEYMAN

DATE 8/8/85

WEATHER SUNNY

TEMP. 80°

ROUTE 19

COUNTY SENECA

TOWNSHIP ADAMS

SECTION 27, 28, 33, 34

T 3 N R 16 E

TYPE MONUMENT P.K. & WASHER

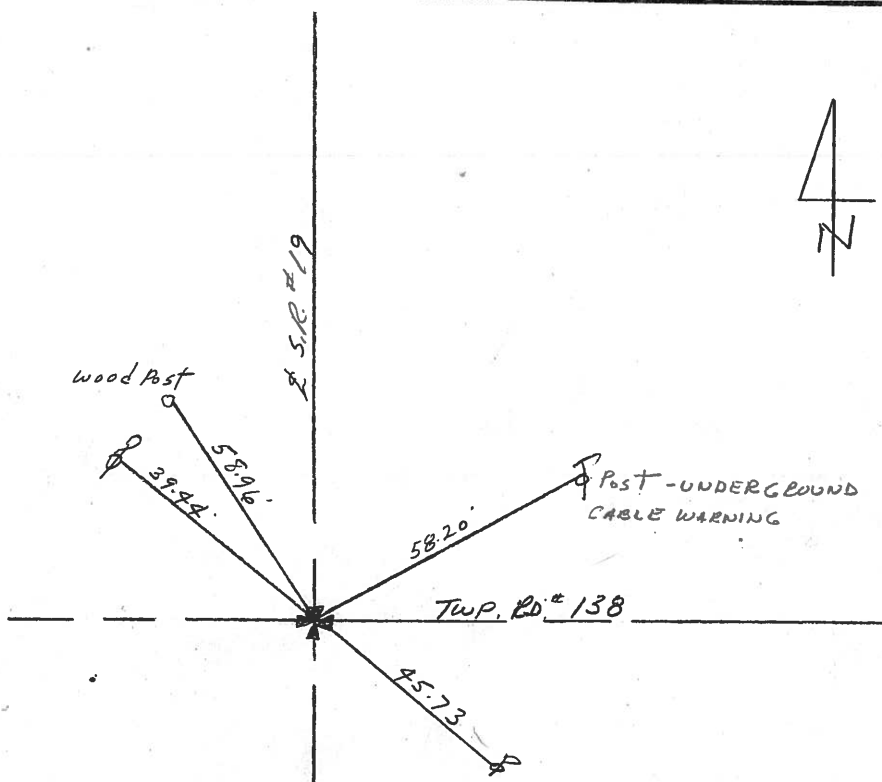
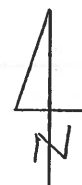
ON SURFACE - BELOW ON SURFACE

LEFT- & PAV'T. - RIGHT 1.5' RT. & PAVMT

TO EDGE PAVEMENT

S.L.M.

| | |
|----|----|
| 28 | 27 |
| 33 | 34 |



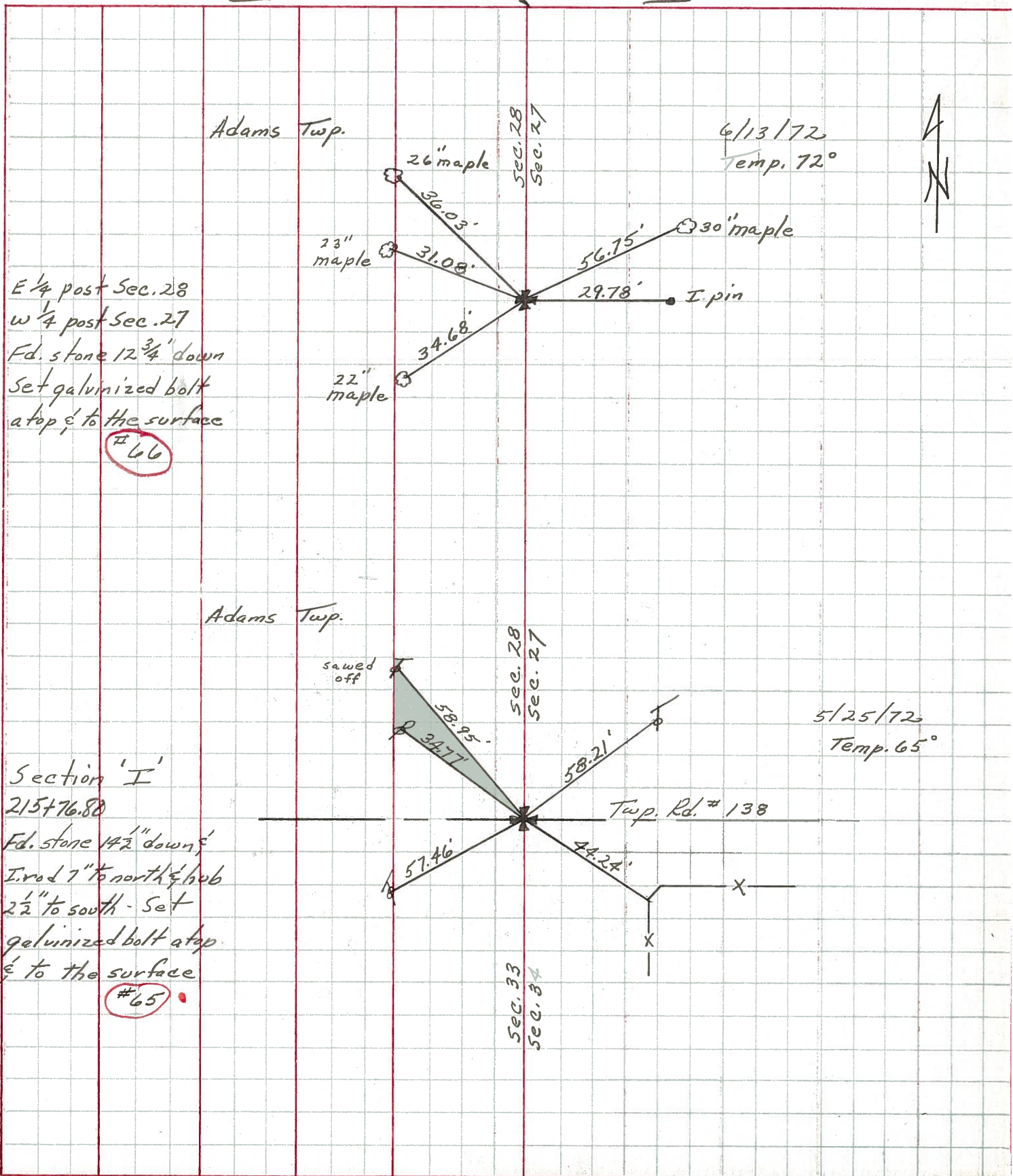
215+76.80
STONE 16" x 16" BELOW SURFACE
GALVINIZED BOLT ATOP
I Rod 7" to NORTH - 1/2" B 2 1/2" South

| PERSONNEL | TITLE | PERSONNEL | TITLE |
|-----------|-------|-----------|-------|
| Ash | | | |
| Cronin | | | |
| Ripple | | | |
| Anderson | | Vinson | |

COUNTY Seneca DATE Drawn 6/21/72
 S. R. # 19 WEATHER _____
 SEC. _____ TEMP. _____

DESCRIPTION Ties for Control Points - Republic North

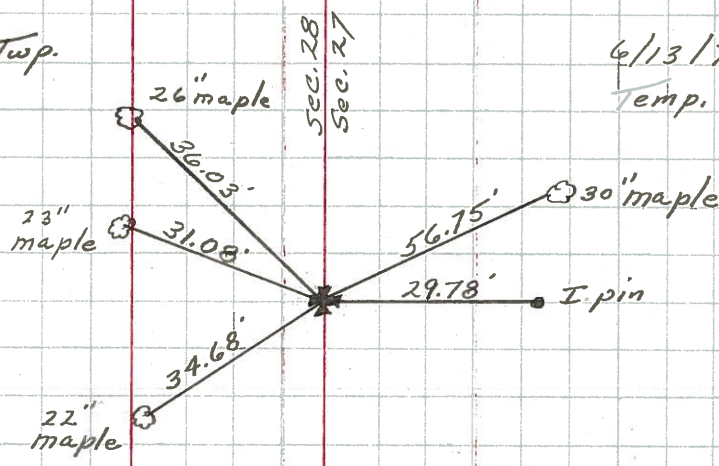
JOB NO. _____



Adams Twp.

6/13/72
Temp. 72°

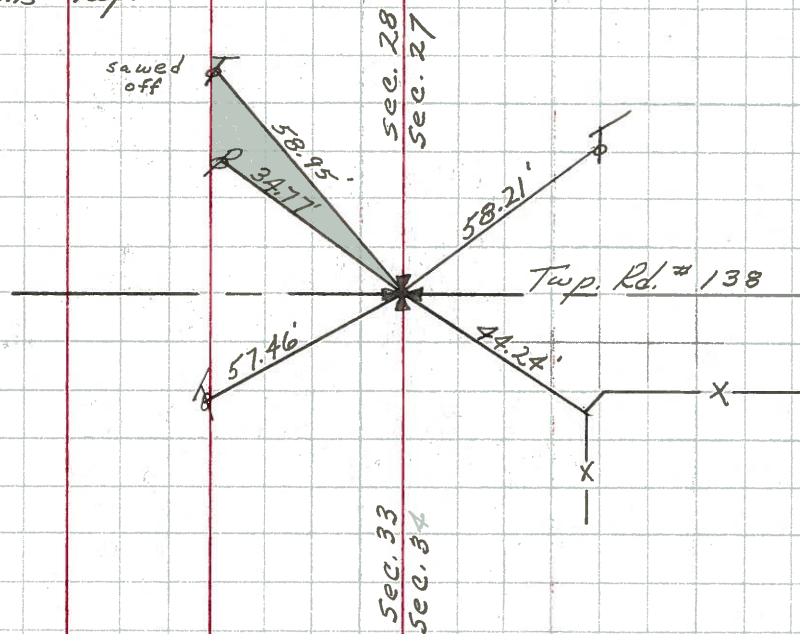
E 1/4 post Sec. 28
 w 1/4 post Sec. 27
 Fd. stone 12 3/4" down
 Set galvanized bolt
 at top & to the surface
 #66



Adams Twp.

5/25/72
Temp. 65°

Section 'I'
 215+76.80
 Fd. stone 14 1/2" down
 I. rod 7" to north & hub
 2 1/2" to south. Set
 galvanized bolt at top
 & to the surface
 #65



| PERSONNEL | TITLE | PERSONNEL | TITLE | COUNTY | DATE | WEATHER | TEMP. |
|-----------|-------|-----------|-------|---------------------|---------|---------|-------|
| Schneider | | | | Seneca | 7-30-69 | Hot | 85° |
| Mosser | | | | S. R. 19 | | | |
| Barbour | | | | Sec. Republic-North | | | |
| Potts | | | | | | | |

DESCRIPTION: Ties for Control Points

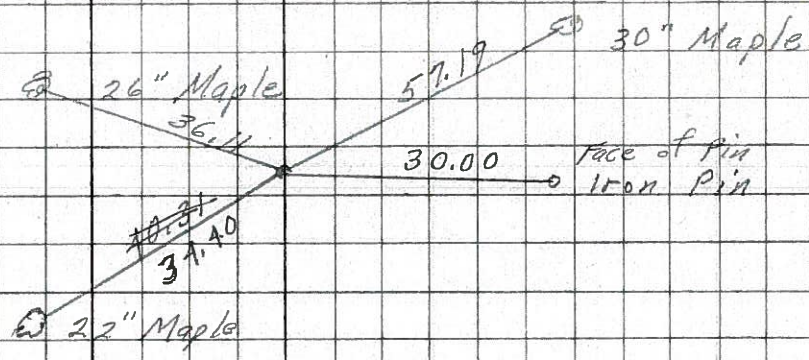
LEFT CENTER LINE RIGHT

8274

did not find

(66)

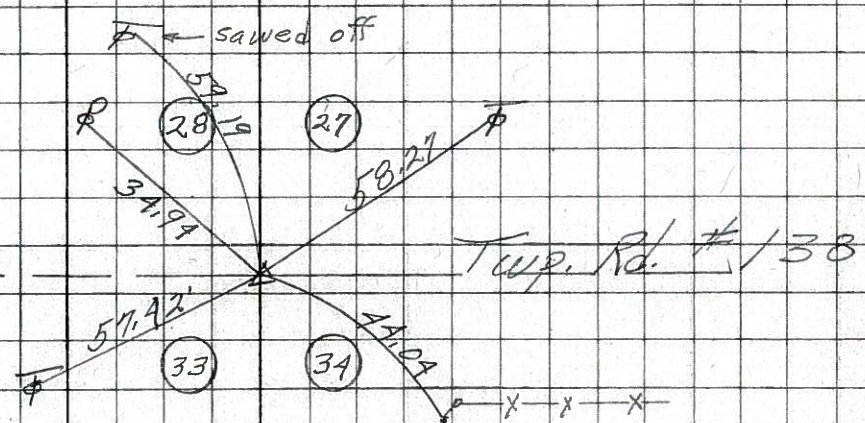
1/2 sec. Line
Fd. R.R. spk.
2 1/2" down
set P.K. on top



8273

(65)

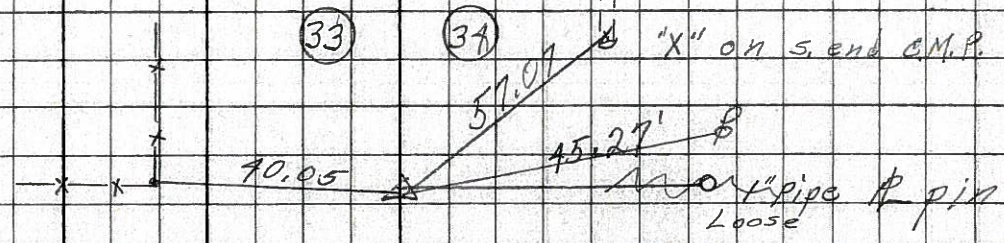
215+76.80
R.R. spk.
2" down



8272

(64)

189+14.66
 $\Delta = 0^\circ 04' 11''$
R.R. spk. 3" down



8271