

O.D.O.T. DISTRICT 2 SURVEY OFFICE (USE ONLY)

PERSONNEL

REFERENCE NO. 66

SHEET 16 OF 32

NOTES RHOADES

DATE 3/14/18

ROUTE SR 19

H.C. O'DONNELL

WEATHER CLOUDY

COUNTY SENECA

R.C. RHOADES

TEMP. 26°

TOWNSHIP ADAMS

SECTION 28

DWG BY MILLER

PID 102817

T 3 N R 16 E

TYPE MONUMENT P.K./WASHER

ON SURFACE - ~~BELOW~~ ON

OFFSET  $\varnothing$  PAVEMENT 0.5' LT : ~~RT~~

9.5' TO LT EDGE PAVEMENT

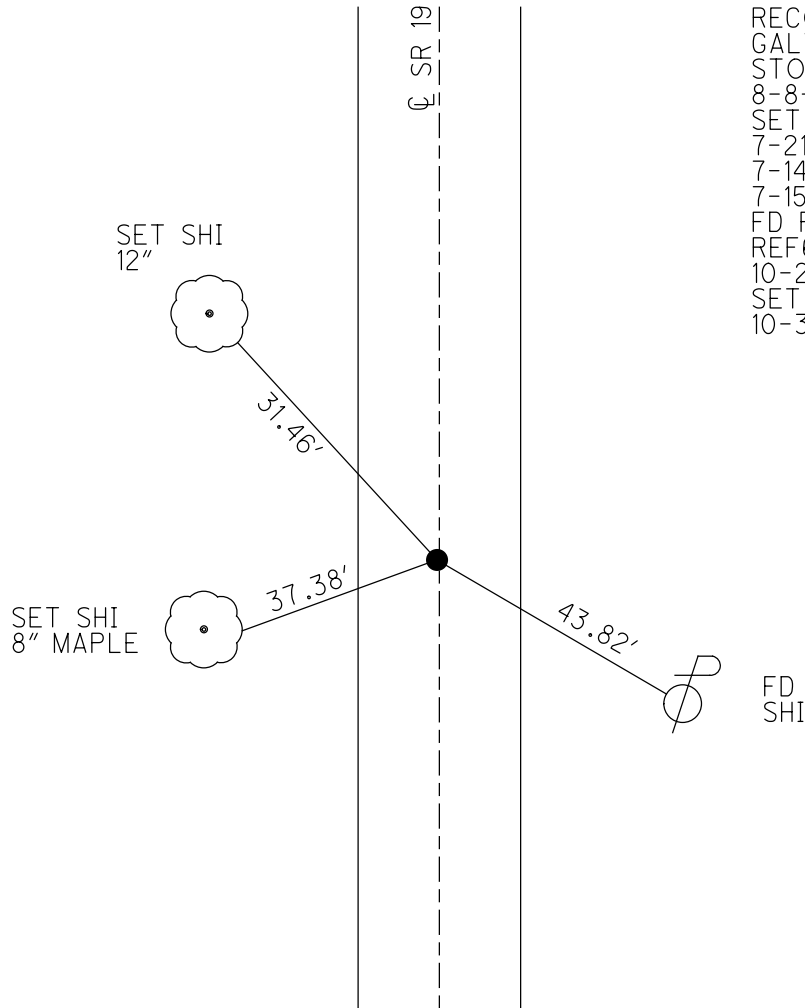
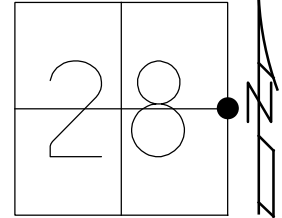
STATION: 721+48.61

HORZ.DATUM: NAD83(2011)

GEOID: NAVD88 2012A

GRID: NORTHING: 555830.293

EASTING: 1826826.480



RECORD:  
 GALV. BOLT ATOP  
 STONE 15"± BELOW  
 8-8-85  
 SET P.K./WASHER  
 7-21-94  
 7-14-09, MB  
 7-15-10  
 FD P.K./WASHER  
 REF66  
 10-27-16, DCH  
 SET MAG/WASHER  
 10-3-18, JFO

O.D.O.T. DISTRICT 2 SURVEY OFFICE (USE ONLY)

PERSONNEL \_\_\_\_\_

REFERENCE NO. 66

SHEET 12 OF 24

NOTES MOSER

DATE 07-14-09

ROUTE SR 19

H.C. BARNHISEL

WEATHER HOT

COUNTY SENECA

R.C. MOSER

TEMP. 80°

TOWNSHIP ADAMS

SECTION 28

T 3 N R 16 E

TYPE MONUMENT \_\_\_\_\_ BOLT \_\_\_\_\_

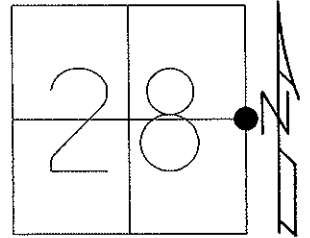
ON SURFACE - BELOW \_\_\_\_\_ ON \_\_\_\_\_

LEFT -  $\odot$  PAV'T - RIGHT \_\_\_\_\_ 0.5' \_\_\_\_\_

9.5' TO LT EDGE PAVEMENT

S.L.M. \_\_\_\_\_ 721+38 \_\_\_\_\_

Grid: Northing: \_\_\_\_\_ Easting: \_\_\_\_\_



RECORD  
 STONE 15"± BELOW SURFACE  
 GALV. BOLT ON TOP  
 08-08-85  
 07-21-94 SET PK/WASHER  
 07-14-09 FD PK/WASHER  
 07-15-10 FD PK/WASHER

SET SHI  
 12" MAPLE



59.08'

SET SHI  
 8" ASH



25.41'

SR 19

$\odot$  PAVT

43.82'



SET SHI

O.D.O.T. DISTRICT 2 SURVEY OFFICE

PERSONNEL \_\_\_\_\_

REFERENCE NO. 66

SHEET 24 OF 26

NOTES LOHRKE

H.C. CANTERBURY

R.C. HERMILLER

DATE 6-18-94

WEATHER HOT

TEMP. +90

ROUTE SR. 19

COUNTY Seneca

TOWNSHIP ADAMS

SECTION 28

T.3 N R.16 E

TYPE MONUMENT Bolt

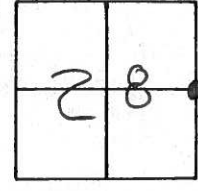
ON SURFACE - BELOW 3 1/2"

LEFT - & PAV'T. - RIGHT Yes

9.5 TO Lt EDGE PAVEMENT

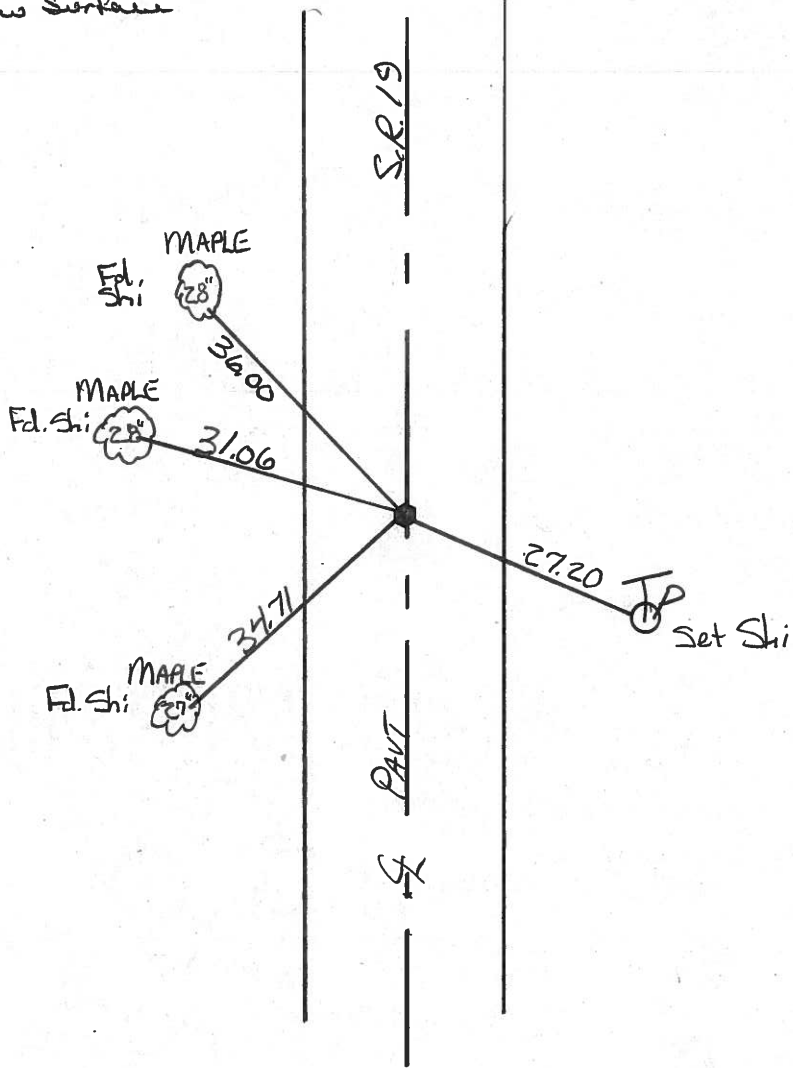
S.L.M. 721 + 38

Set P.K./WASHER  
7-21-94 M.C.



Record

Stone 15" ± below surface  
Galv. Bolt on top  
8/8/85



O.D.O.T. DISTRICT 2 SURVEY OFFICE

27

PERSONNEL

REFERENCE NO. 66

SHEET      OF     

NOTES CRONIN

H.C. RIPPLE

R.C. BARBOUR

GEYMAN

DATE 8/8/85

WEATHER SUNNY

TEMP. 80°

ROUTE 19

COUNTY SENECA

TOWNSHIP ADAMS

SECTION 28

T 3 N R 16 E

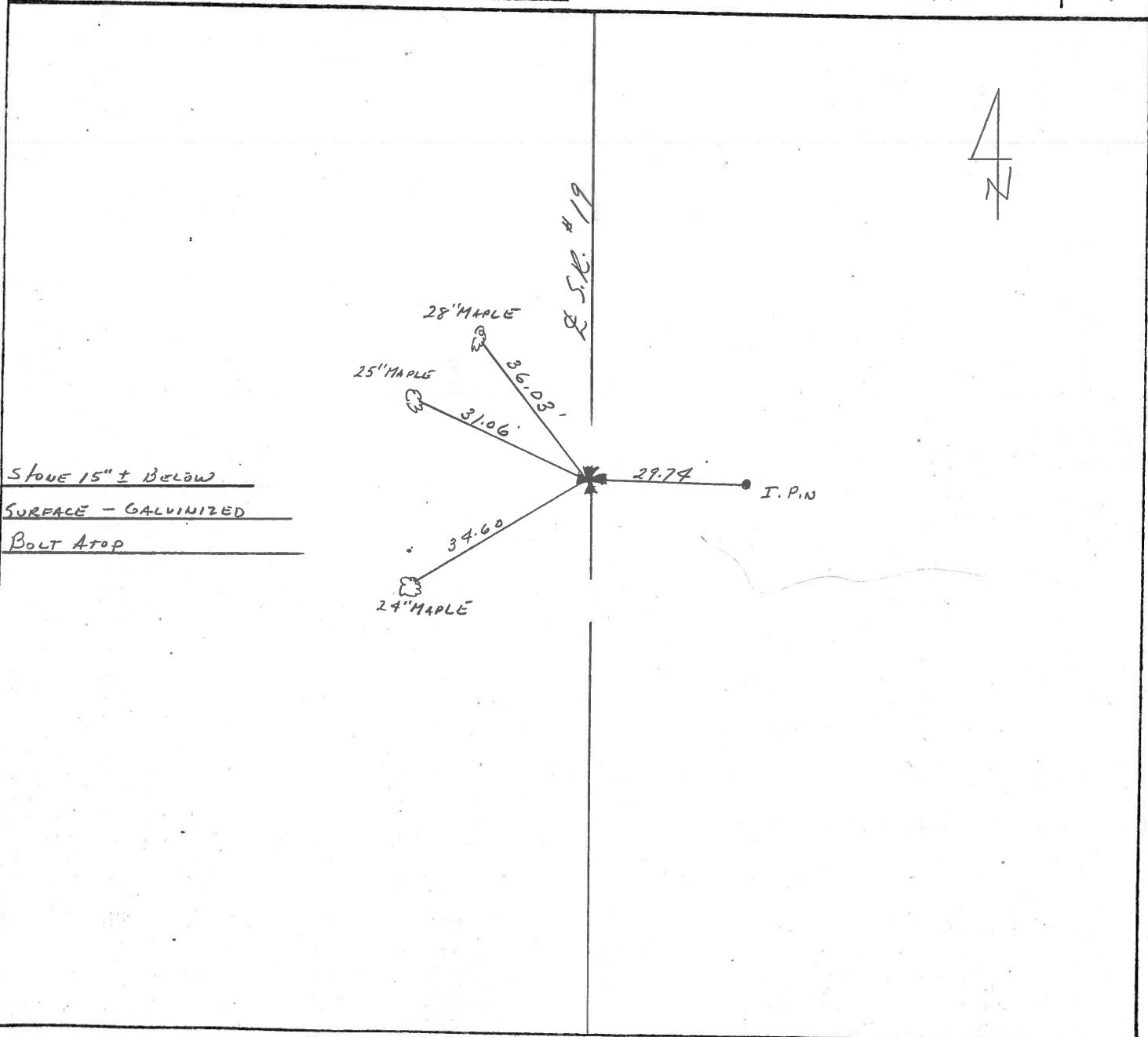
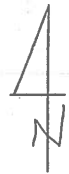
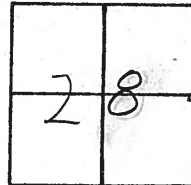
TYPE MONUMENT P.K. & WASHER

ON SURFACE - BELOW ON SURFACE

LEFT - & PAV'T. - RIGHT & PAV'T.

TO      EDGE PAVEMENT

S.L.M.     





PERSONNEL TITLE PERSONNEL TITLE

Ash  
Cronin  
Ripple  
Anderson

COUNTY Seneca

DATE Drawn 6/29/72

S. R. # 19

WEATHER

Vinson

SEC.

TEMP.

DESCRIPTION

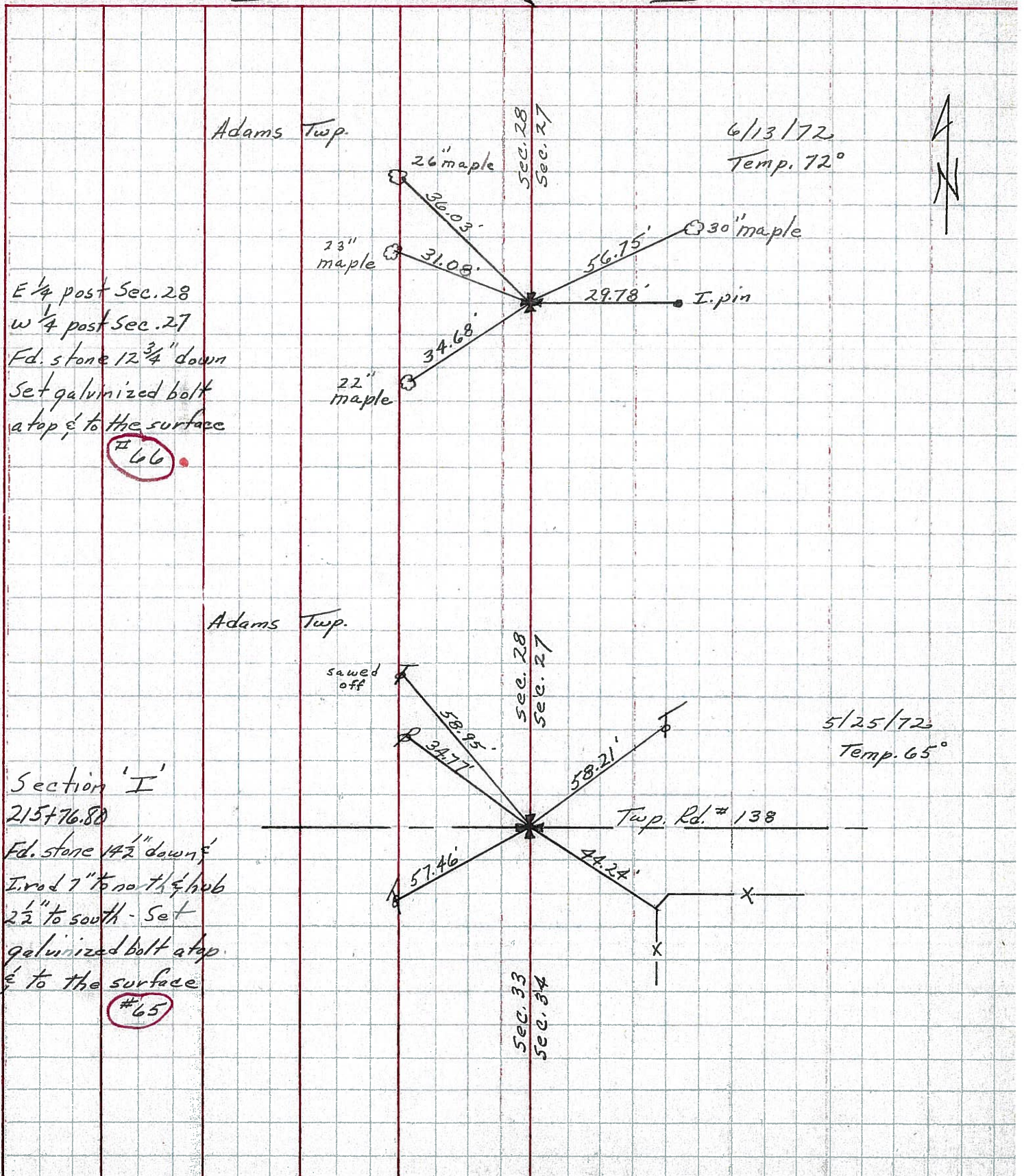
Ties for Control Points - Republic North

JOB NO.

LEFT

CENTER LINE

RIGHT



E 1/4 post Sec. 28  
 W 1/4 post Sec. 27  
 Fd. stone 12 3/4" down  
 Set galvanized bolt  
 at top & to the surface  
 #66

Section 'I'  
 215+76.80  
 Fd. stone 14 1/2" down  
 I. rod 7" to north & hub  
 2 1/2" to south - Set  
 galvanized bolt at top  
 & to the surface  
 #65



PERSONNEL	TITLE	PERSONNEL	TITLE	COUNTY	DATE	WEATHER	TEMP.
Schneider				Seneca	7-30-69	Hot	85°
Mosser				S. R. 19			
Barbour				Sec. Republic-North			
Potts							

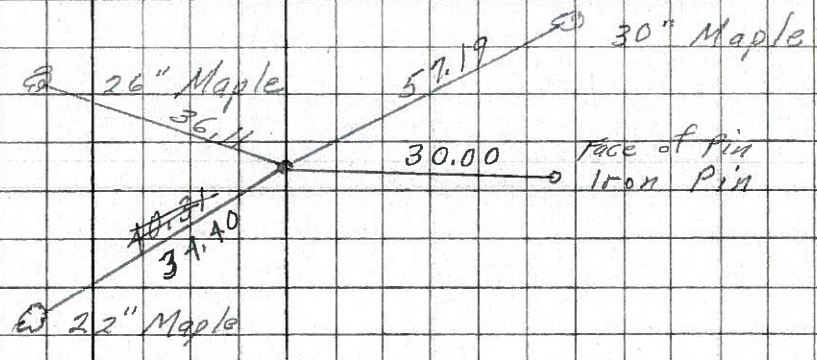
DESCRIPTION: Ties for Control Points

(66)

1/2 sec. Line  
Ed. R.R. spk.  
2 1/2" down  
set P.K. on top

8274

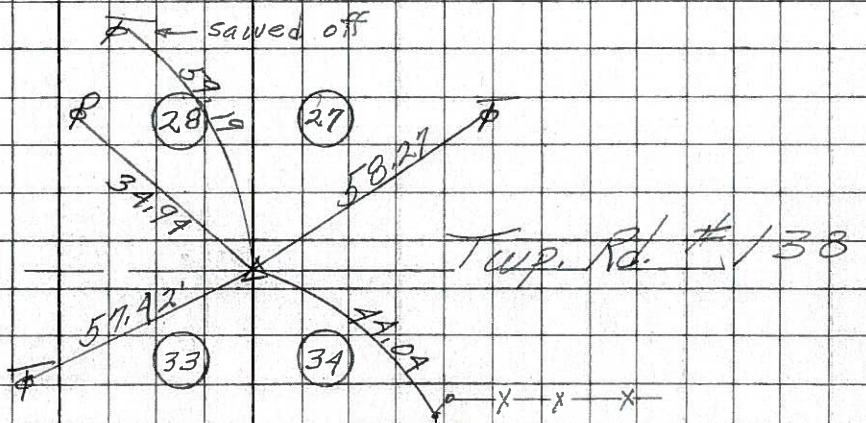
did not find



(65)

215+76.80  
R.R. spk.  
2" down

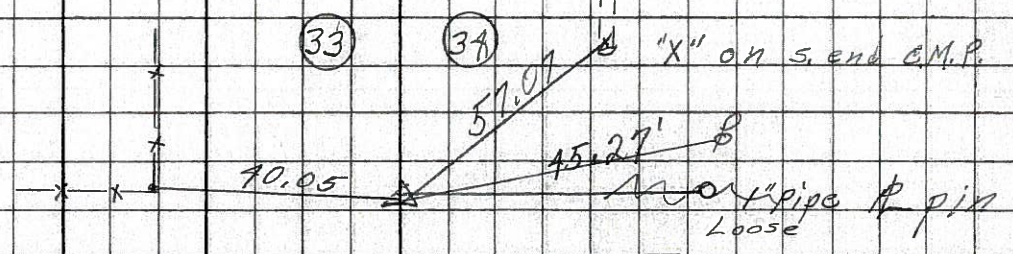
8273



(64)

189+14.66  
 $\Delta = 0^\circ 04' 11''$   
R.R. spk. 3" down

8272



8271