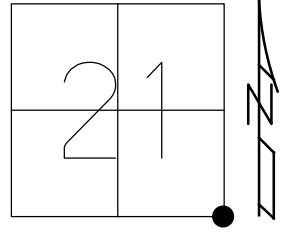


O.D.O.T. DISTRICT 2 SURVEY OFFICE (USE ONLY)

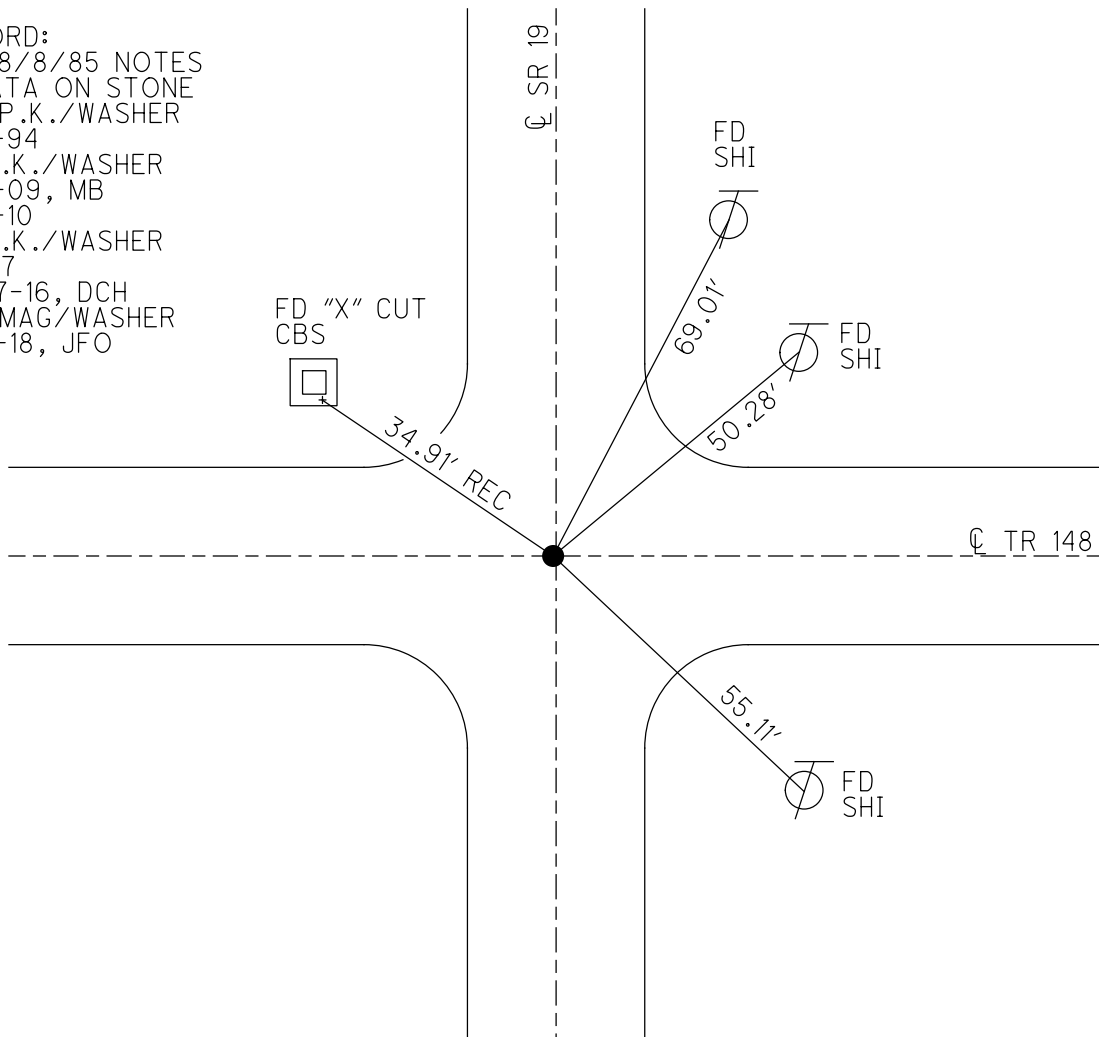
PERSONNEL _____ REFERENCE NO. 67 SHEET 17 OF 32
 NOTES RHOADES DATE 3/14/18 ROUTE SR 19
 H.C. O'DONNELL WEATHER CLOUDY COUNTY SENECA
 R.C. RHOADES TEMP. 26° TOWNSHIP ADAMS
 DWG BY MILLER PID 102817 SECTION 21
 T 3 N R 16 E

TYPE MONUMENT P.K./WASHER
 ON SURFACE - ~~BELOW~~ ON _____
 OFFSET \odot PAVEMENT 0.5' LT : ~~RT~~
 _____ TO _____ EDGE PAVEMENT
 STATION: 748+16.75



HORZ.DATUM: NAD83(2011) GEOID: NAVD88 2012A
 GRID: NORTHING: 558498.343 EASTING: 1826805.140

RECORD:
 SEE 8/8/85 NOTES
 F/DATE ON STONE
 SET P.K./WASHER
 7-21-94
 FD P.K./WASHER
 7-14-09, MB
 7-15-10
 FD P.K./WASHER
 REF67
 10-27-16, DCH
 SET MAG/WASHER
 10-3-18, JFO



O.D.O.T. DISTRICT 2 SURVEY OFFICE (USE ONLY)

PERSONNEL _____

REFERENCE NO. 67

SHEET 13 OF 24

NOTES MOSER

DATE 07-14-09

ROUTE SR 19

H.C. BARNHISEL

WEATHER CLOUDY

COUNTY SENECA

R.C. MOSER

TEMP. 80°

TOWNSHIP ADAMS

SECTION 21

T 3 N R 16 E

TYPE MONUMENT PK/WASHER ATOP RE-ROD

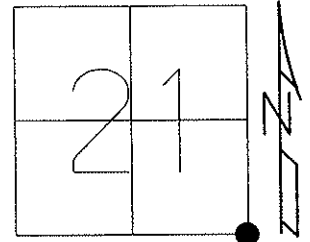
ON SURFACE - BELOW ON

LEFT - ϕ PAV'T - RIGHT 0.5'

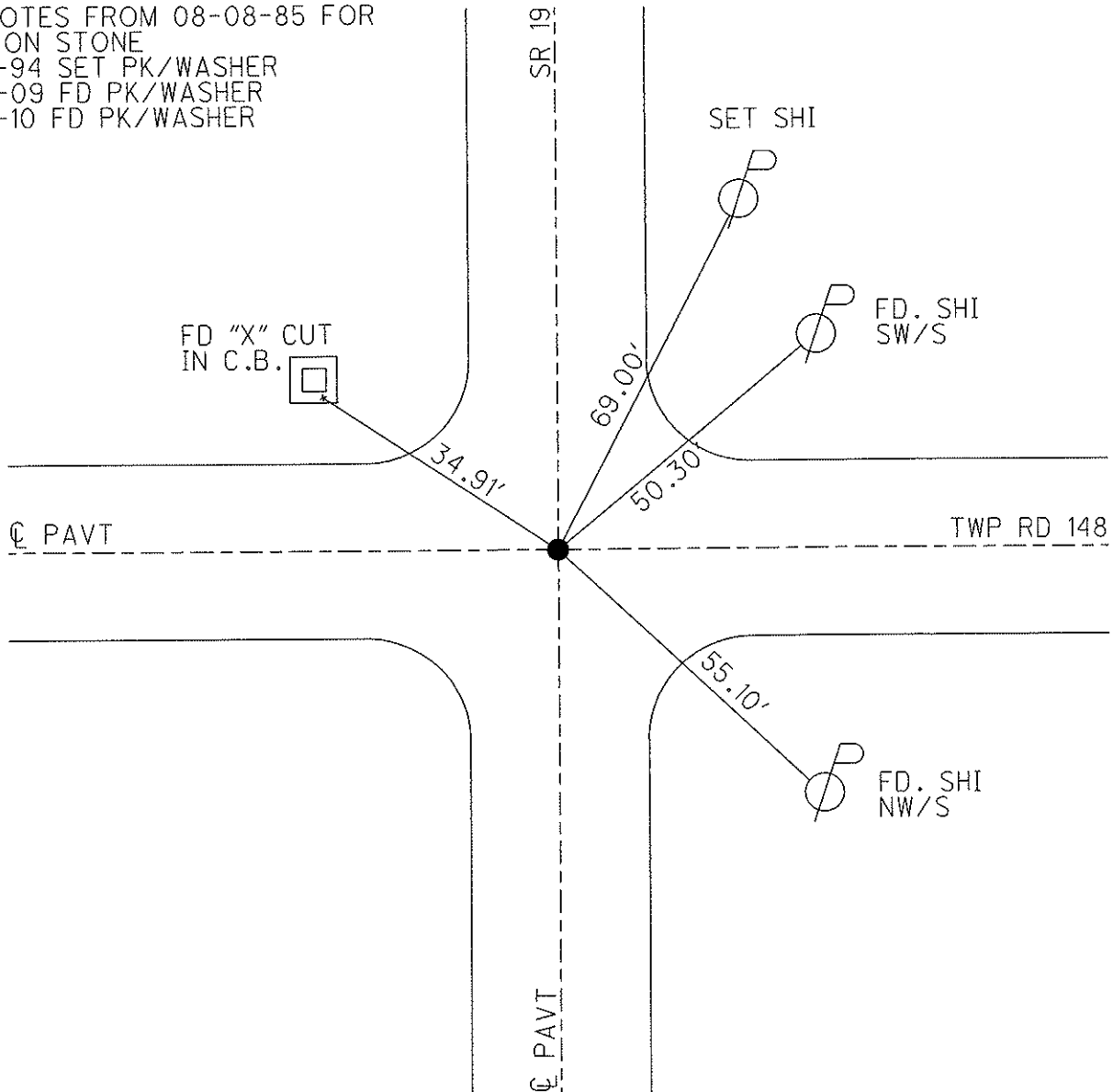
TO EDGE PAVEMENT

S.L.M. 759+06

Grid: Northing: _____ Easting: _____



SEE NOTES FROM 08-08-85 FOR
DATA ON STONE
07-21-94 SET PK/WASHER
07-14-09 FD PK/WASHER
07-15-10 FD PK/WASHER



O.D.O.T. DISTRICT 2 SURVEY OFFICE

PERSONNEL _____

REFERENCE NO. 67

SHEET 25 OF 26

NOTES CANTERBURY

H.C. HERMILLER

R.C. PRUNTY

DATE 7/21/94

WEATHER CLOUDY

TEMP. +85°

ROUTE 19

COUNTY SENECA

TOWNSHIP ADAMS

SECTION 21, 22, 27, 28

T 3 N R 16 E

TYPE MONUMENT P.K./WASHER Atop RE-ROD

ON SURFACE -BELOW yes

~~LEFT~~ ☉ PAV'T. ~~RIGHT~~ ☉ PAV'T

TO EDGE PAVEMENT

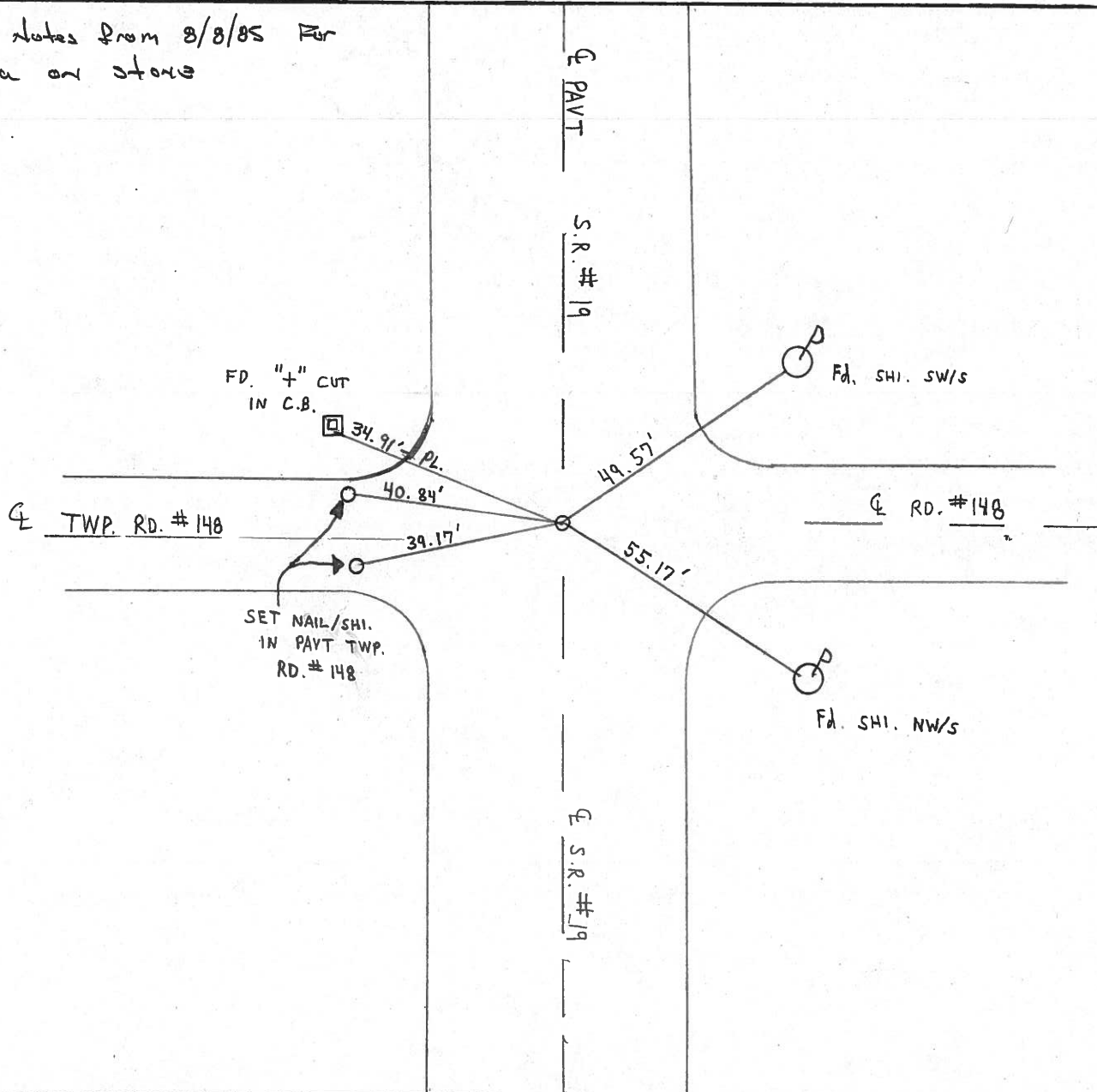
S.L.M. 759+06

Set P.K./washer
7-21-94 M.E.

21	22
28	27



See notes from 8/8/85 for
data on stone



O.D.O.T. DISTRICT 2 SURVEY OFFICE

PERSONNEL

REFERENCE NO. 67

SHEET 25 OF

NOTES CROWN

H.C. RIPPLE

R.C. GEYMAN

BARBOUR

DATE 8/8/85

WEATHER SUNNY

TEMP. 80°

ROUTE 19

COUNTY SENECA

TOWNSHIP ADAMS

SECTION 21, 22, 27 & 28

T. 3 N R. 16 E

TYPE MONUMENT P.K. & WASHER ATOP RE-ROD

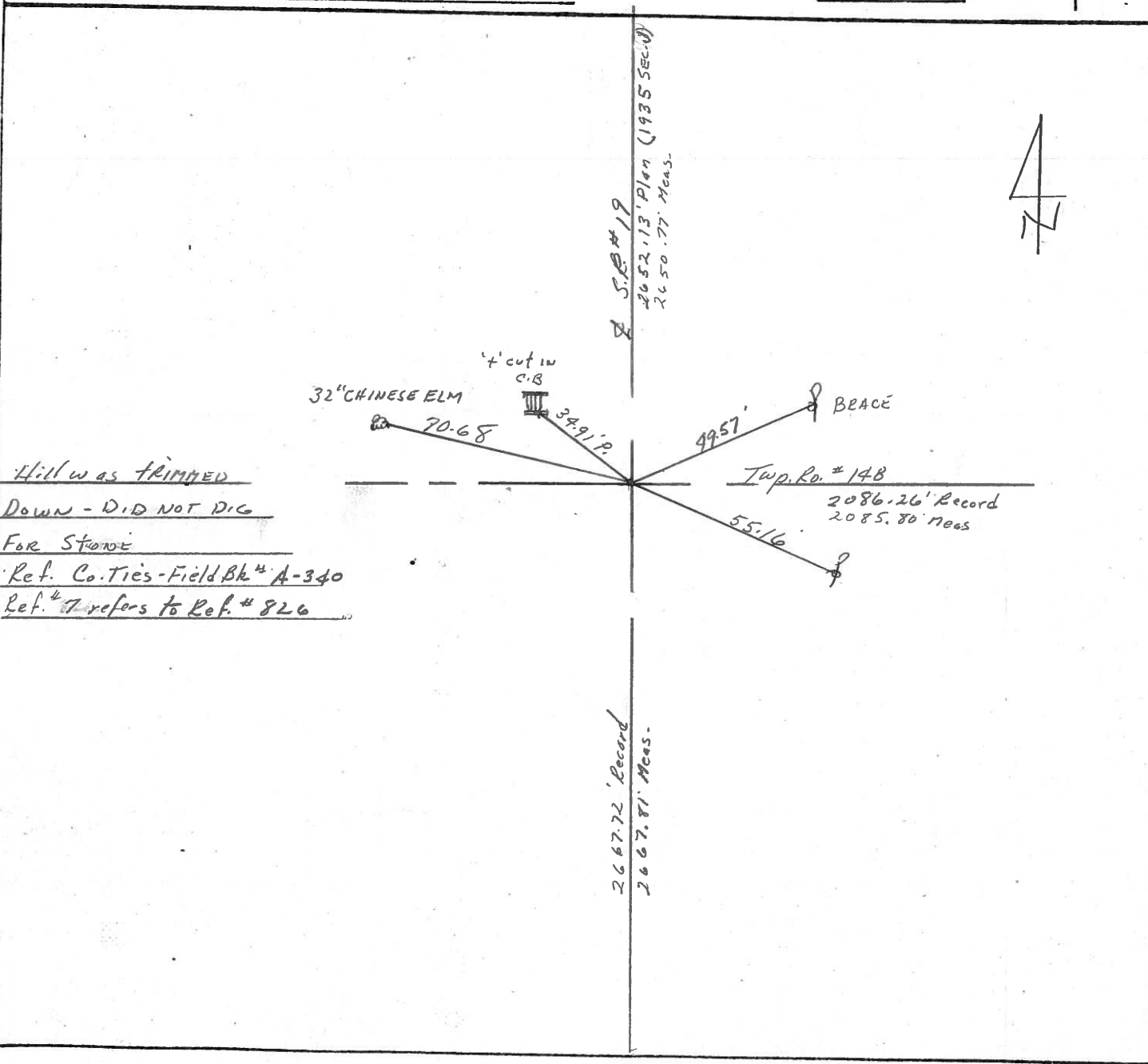
ON SURFACE - BELOW ON SURFACE

LEFT- & PAV'T. - RIGHT & PAVMT.

TO EDGE PAVEMENT

S.L.M.

21	22
28	27



Hill was TRIMMED
DOWN - DID NOT DIG
FOR STONE
Ref. Co. Ties - Field Bk # A-340
Ref. # 7 refers to Ref. # 826

PERSONNEL TITLE PERSONNEL TITLE

Ash
Cronin
Ripple
Anderson

COUNTY Seneca

DATE Drawn 6/22/72

S. R. #19

WEATHER

SEC.

TEMP.

DESCRIPTION Ties Per Control Points - Republic North

JOB NO.

LEFT CENTER LINE RIGHT

Did not make temp. corrections

Adams Twp.

24" maple

35.89'

12" Hickory

40.25'

34.53'

6/19/72
Temp 80°

* Stone was found south of R.R. spike between 1' & 2'

E 1/4 post Sec. 21
W 1/4 post Sec. 22
Fd. stone 18" down with galvanized bolt at top. Removed bolt & set I. pipe at top 2' to the surface

#68

Adams Twp.

30" chinese elm

70.72'

1935 State Highway Plan Sec. J.

2652.13' Plan
2650.77 Meas.

49.56'

Brace

7/28/72
68°

Sec. Cor. of 21, 22, 27 & 28
Set re-entrancing rod
Hill was cut down, so did not dig for stone.

#67

Twp. Rd. #148

2086.26 Record
2085.80 Meas.

52.87'

* Ties to the east check out with county ties.
Ref #826 from Field Book A-340
Ref. #7

Sec. #28

40.42'

2667.72 Record
2667.81 Meas.

Sec. #27

