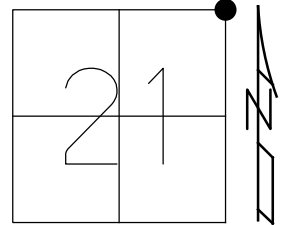


O.D.O.T. DISTRICT 2 SURVEY OFFICE (USE ONLY)

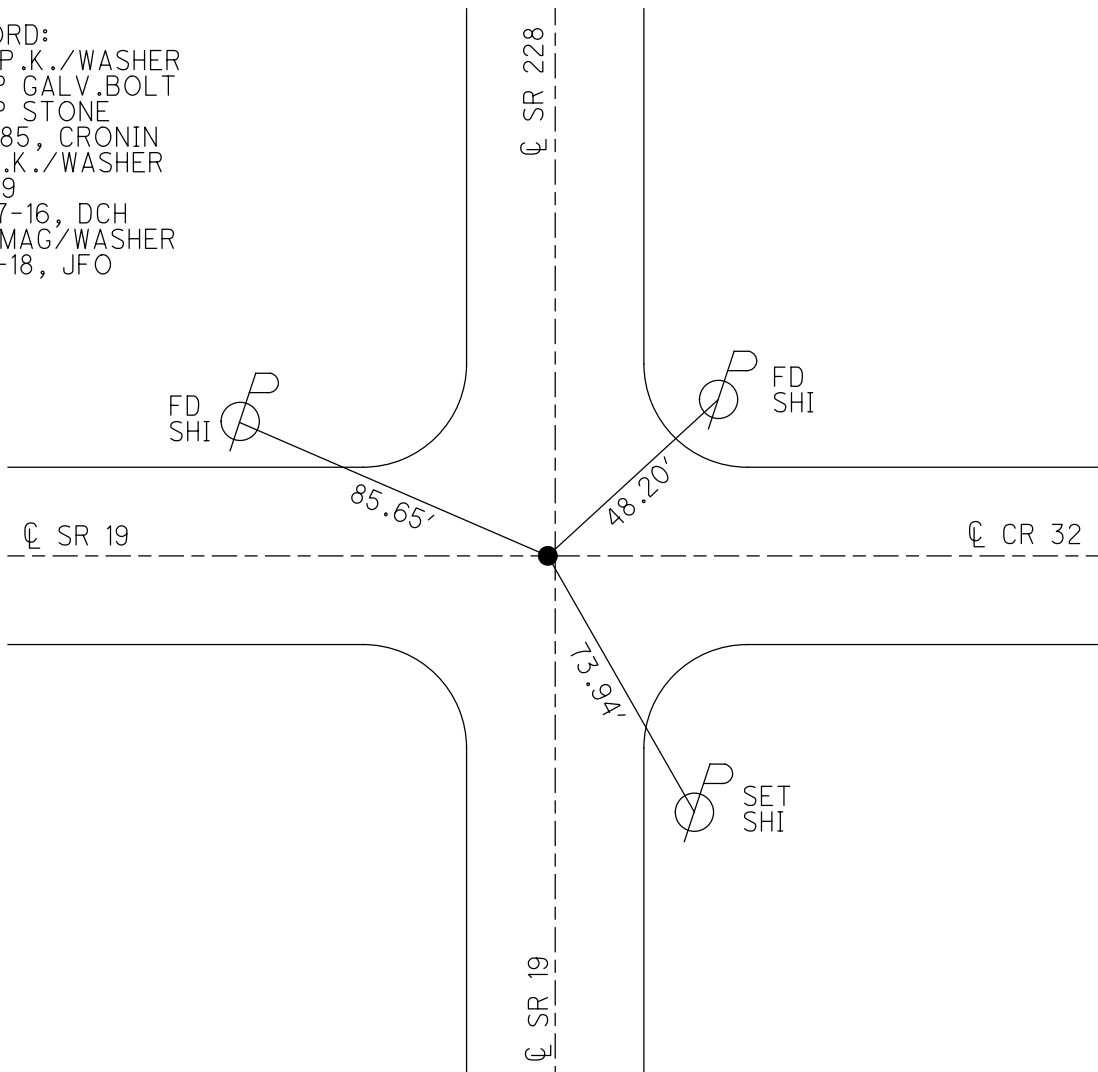
PERSONNEL _____ REFERENCE NO. 69 SHEET 19 OF 32
 NOTES RHOADES DATE 3/14/18 ROUTE SR 19
 H.C. O'DONNELL WEATHER CLOUDY COUNTY SENECA
 R.C. RHOADES TEMP. 26° TOWNSHIP ADAMS
 SECTION 21
 DWG BY MILLER PID 102817 T 3 N R 16 E

TYPE MONUMENT P.K./WASHER
 ON SURFACE - ~~BELOW~~ ON
 OFFSET ϕ PAVEMENT 1' LT : ~~RT~~
- TO - EDGE PAVEMENT
 STATION: 801+58.19



HORZ.DATUM: NAD83(2011) GEOID: NAVD88 2012A
 GRID: NORTHING: 563839.456 EASTING: 1826745.385

RECORD:
 SET P.K./WASHER
 ATOP GALV.BOLT
 ATOP STONE
 9-4-85, CRONIN
 FD P.K./WASHER
 REF69
 10-27-16, DCH
 SET MAG/WASHER
 10-3-18, JFO



Chip Seal 2003

O.D.O.T. DISTRICT 2 SURVEY OFFICE

PERSONNEL

REFERENCE NO. 1

SR 19 #69

SHEET 1 OF 9

NOTES BARNHISEL RC Cuff

H.C. CORDES JON DATE 9-3-96

R.C. GLEN WEATHER Sunny

MIKE MTEMP. +85° 50

ROUTE 228

COUNTY Seneca

TOWNSHIP ADAMS

SECTION 16

T3 N R 16 E

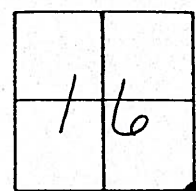
TYPE MONUMENT PK & WASHER ✓

ON SURFACE - ~~SET~~ yes ✓

LEFT- & PAV'T. - ~~SET~~ 1.5 ✓

TO EDGE PAVEMENT

S.L.M. 0+00 801+36 SR 19

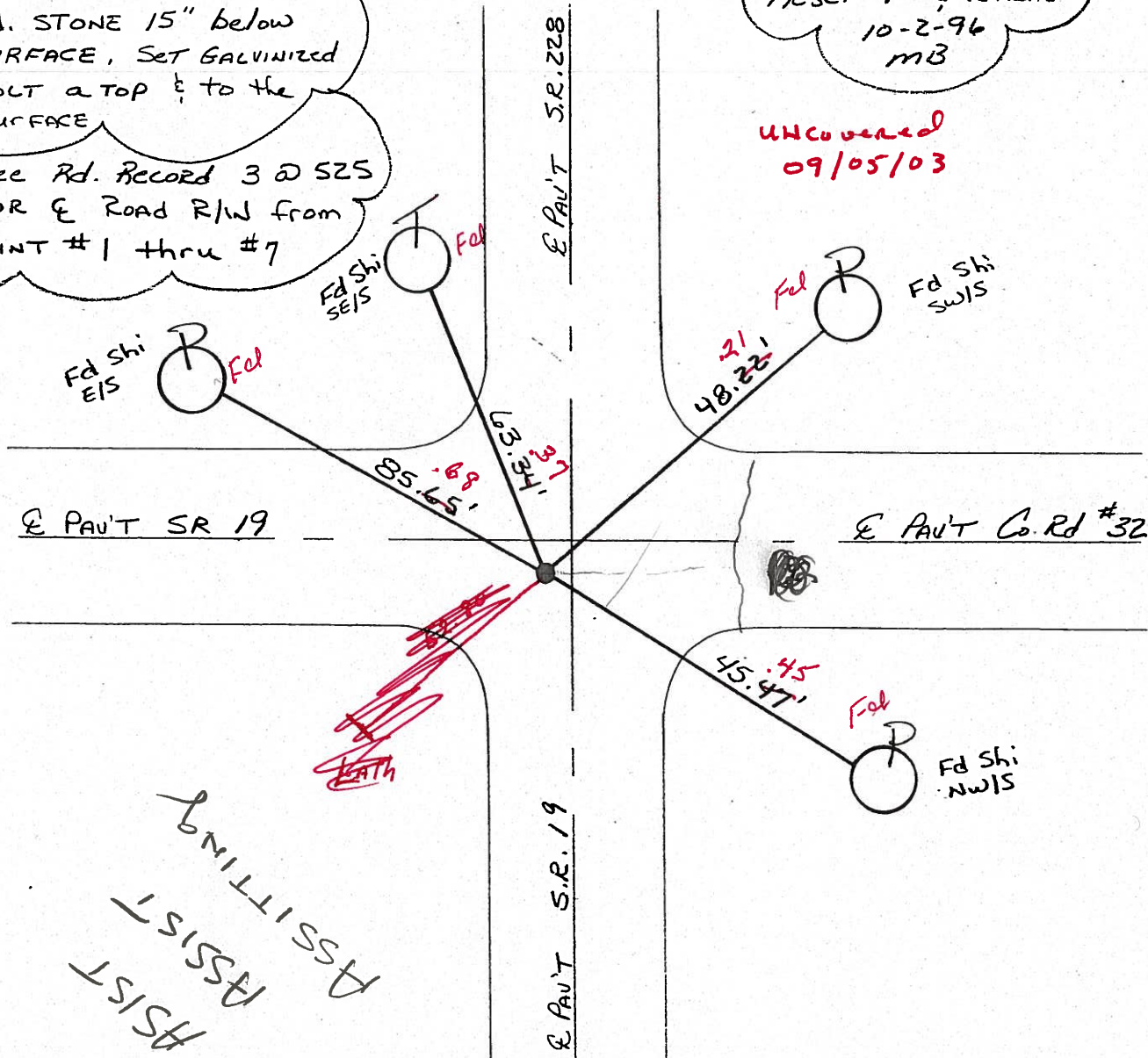


RECORD: 0+00
Fd. STONE 15" below
SURFACE, SET GALVANIZED
BOLT a TOP & to the
SURFACE

See Rd. Record 3 @ 525
FOR & ROAD R/W FROM
POINT #1 thru #7

RESET PK & WASHER
10-2-96
MB

UNCOVERED
09/05/03



ASSIST
ASSIST
ASSISTING

O.D.O.T. DISTRICT 2 SURVEY OFFICE

PERSONNEL _____

REFERENCE NO. 1

SR 19
#69

SHEET _____ OF _____

NOTES BARNHISEL RC

H.C. CORDES

R.C. _____

DATE 9-3-96

WEATHER SUNNY

TEMP. +85°

ROUTE 228

COUNTY Seneca

TOWNSHIP ADAMS

SECTION 16

T3 N R 16 E

TYPE MONUMENT PK & WASHER

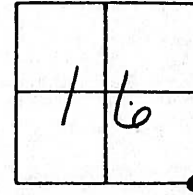
ON SURFACE - ~~NO~~ yes

LEFT- & PAV'T. - ~~NO~~ 1.5

TO EDGE PAVEMENT

S.L.M. 0+00

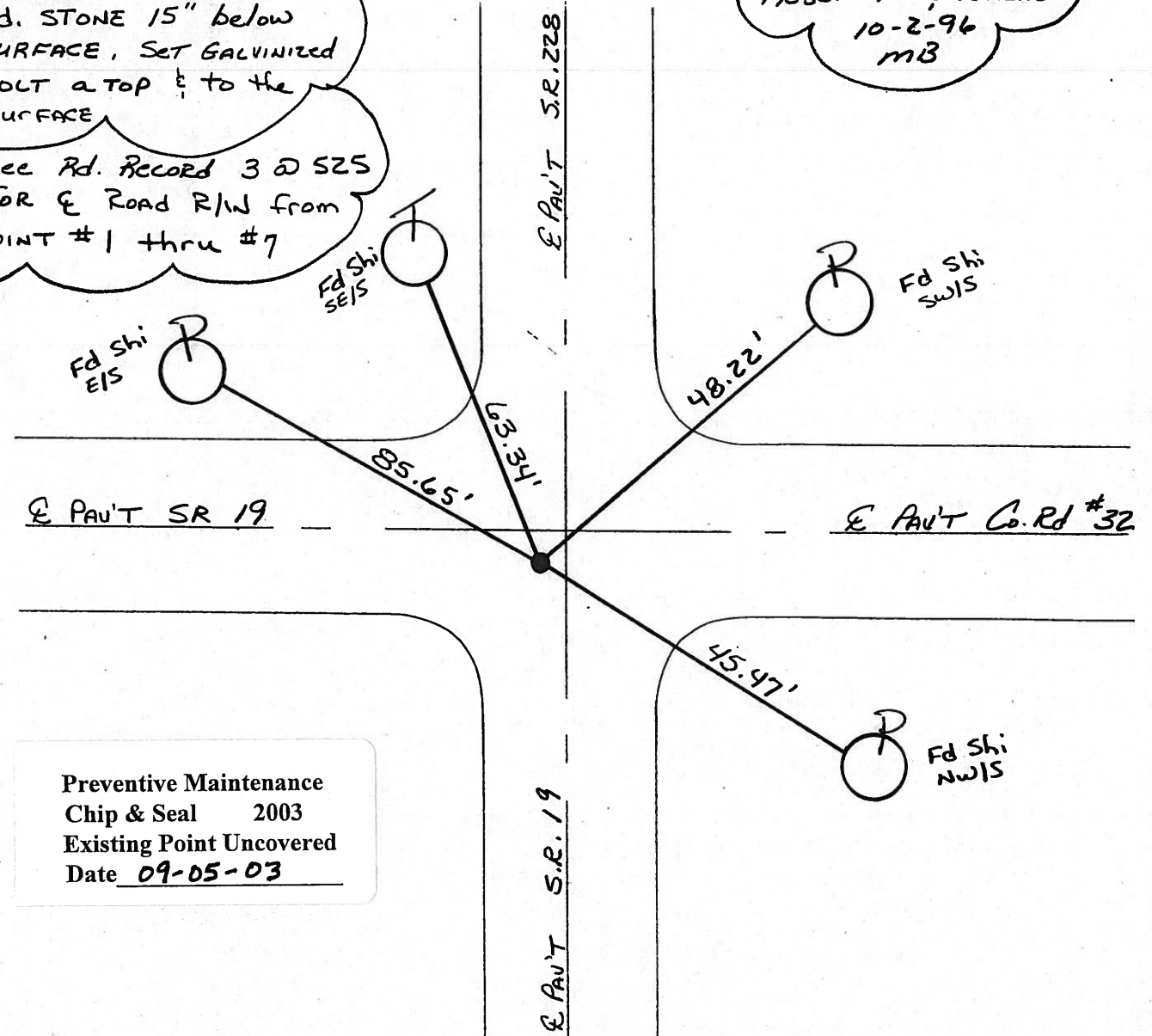
801+36 SR 19



RECORD: 0+00
Fd. STONE 15" below
SURFACE, SET GALVANIZED
BOLT a TOP & to the
SURFACE

See Rd. RECORD 3 @ 525
FOR & ROAD R/W FROM
POINT #1 thru #7

RESET PK & WASHER
10-2-96
MB



Preventive Maintenance
Chip & Seal 2003
Existing Point Uncovered
Date 09-05-03

O.D.O.T. DISTRICT 2 SURVEY OFFICE

(27)

PERSONNEL _____

REFERENCE NO. 69

SHEET _____ OF _____

NOTES CRONIN

H.C. RIPPLE

R.C. GEYMAN

DATE 9/4/85

WEATHER SUNNY

TEMP. 77°

ROUTE #19

COUNTY SENECA

TOWNSHIP ADAMS

SECTION _____

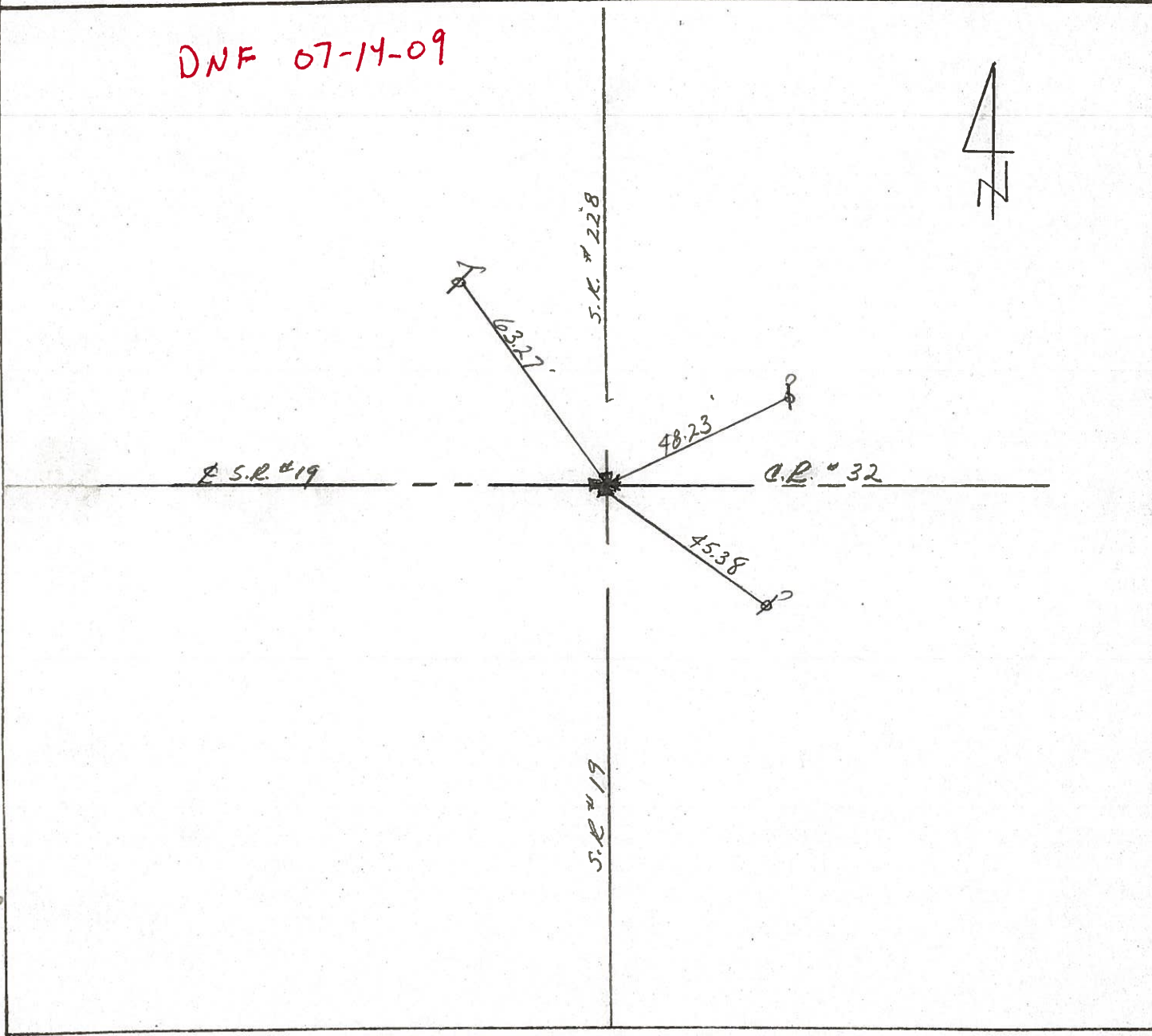
T3 N R 16 E

TYPE MONUMENT SET P.R. WASHER ATOP GALV.
 ON SURFACE - BELOW BOLT ATOP STONE - ON SURFACE
 LEFT - Q PAV'T. - RIGHT 1' LT & PAVT
 _____ TO _____ EDGE PAVEMENT
 S.L.M. 15.2 ±

14	15
21	22



DNF 07-14-09



PERSONNEL TITLE PERSONNEL TITLE

COUNTY Seneca

DATE Drawn 6/22/72

Ash
Cronin
Ripple
Anderson

S. R. #19

WEATHER

Vinson

SEC.

TEMP.

DESCRIPTION Ties for Control Points - Republic North

JOB NO.

LEFT

CENTER LINE

RIGHT

Did not make temp corrections

Adams Twp.

14" elm

38.57'

2662.98'

6/19/72

Temp. 88°

I.C.H 515

S.E. post Sec. 16

N.E. post Sec. 21

Straight line shot

from N.W. Cor. & N.E.

Cor. of Sec. 21 &

split of mile - Looks good

Set I. pipe

#70

2617'

8" elm

72.05'

8" ash

* Dug 5'x5' hole with no results

2662.98'

95.83'

6" locust

SEC. 21

SEC. 16



Adams Twp.

conc. mon.

64.10'

44.50'

SEC. 14

SEC. 15

6/19/72

Temp. 88°

I.C.H 485

Section Corner

Fd. stone 15" down

Set galvanized bolt

a top & to the surface

#69

S.R. #19

SEC. 21

SEC. 22

49.88'

C.R. #32

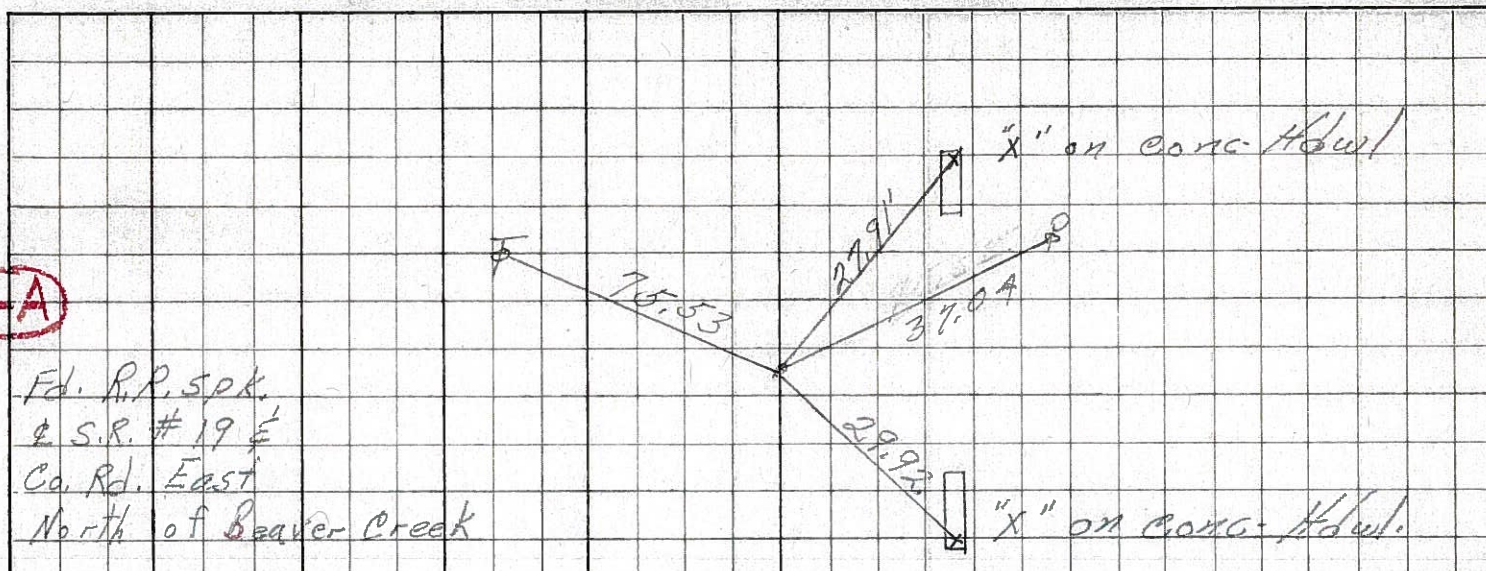
36.77'



PERSONNEL	TITLE	PERSONNEL	TITLE	COUNTY	DATE	WEATHER	TEMP.
Schneider				Seneca	8-7-69	Fair	75°
Mosser				S. R. 19			
Barbour				SEC. Republic - North			
Potts							

DESCRIPTION Ties for Control Points JOB NO. _____

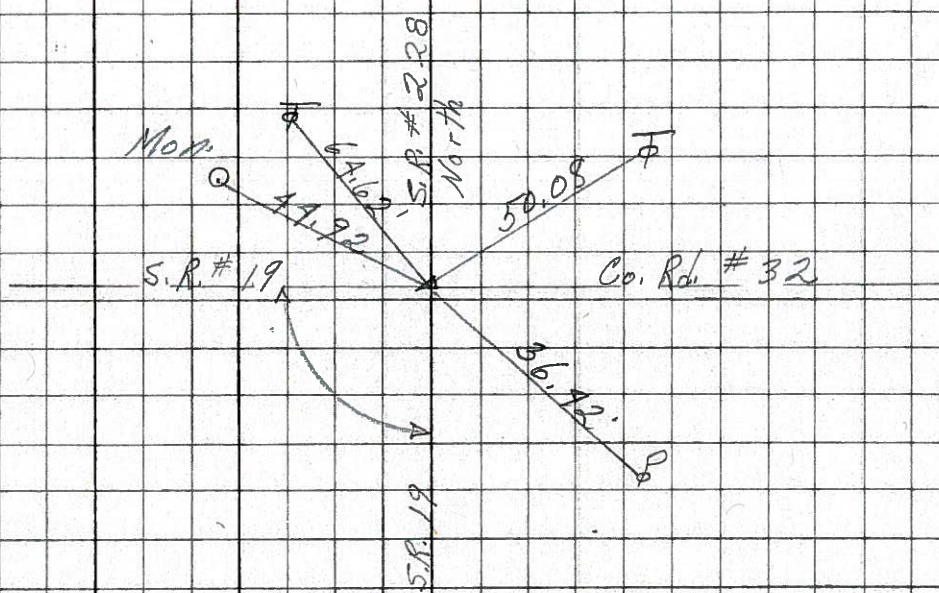
(76-A)



Fd. R.R. Spk.
 & S.R. # 19 E
 Co. Rd. East
 North of Beaver Creek

8277

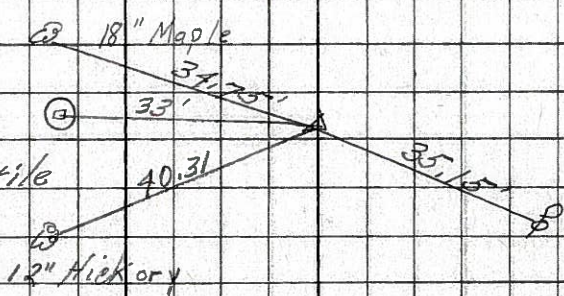
(69)



Cor. S.R. 19
 & S.R. 228
 Fd. Iron pin
 1" down

8276

(68)



1/2 sec. Line
 Fd. R.R. Spk. 3 1/2" down
 1" x 1 1/2" iron pin in 8" Field file

8275