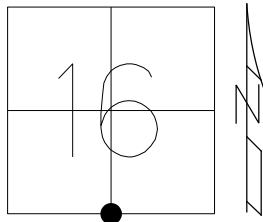


O.D.O.T. DISTRICT 2 SURVEY OFFICE (USE ONLY)

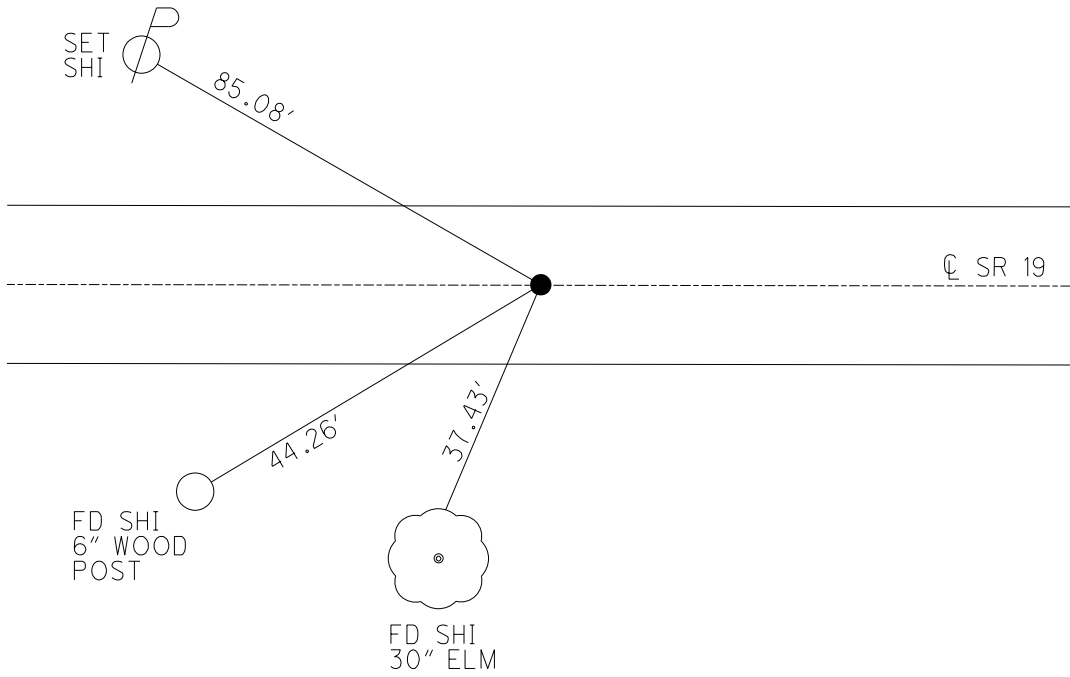
PERSONNEL _____ REFERENCE NO. 70 SHEET 18 OF 30
 NOTES RHOADES DATE 4/26/16 ROUTE SR 19
 H.C. O'DONNELL WEATHER SUNNY COUNTY SENECA
 R.C. RHOADES TEMP. 70° TOWNSHIP ADAMS
 DWG BY MILLER PID 102817 SECTION 16
 T 3 N R 16 E

TYPE MONUMENT _____ P.K./WASHER _____
 ON SURFACE - ~~BELOW~~ _____ ON _____
 OFFSET \odot PAVEMENT _____ ON _____ ~~LT~~ : ~~RT~~ _____
9.4' TO LT EDGE PAVEMENT
 STATION: _____ 828+21.34 _____



HORZ. DATUM: NAD83(2011) GEOID: NAVD88 2012A
 GRID: NORTHING: 563831.222 EASTING: 1824082.250

RECORD:
 SET P.K./WASHER
 10-02-96
 FD P.K./WASHER
 12-15-03, 7-15-09
 7-15-10
 FD P.K./WASHER
 REF 70
 4-26-16
 8-23-16, JFO



O.D.O.T. DISTRICT 2 SURVEY OFFICE (USE ONLY)

PERSONNEL _____ REFERENCE NO. 70 SHEET 15 OF 24

NOTES RHOADES DATE 4-26-16 ROUTE SR 19

H.C. O'DONNELL WEATHER SUNNY COUNTY SENECA

R.C. RHOADES TEMP. 70° TOWNSHIP ADAMS

SECTION 16

T 3 N R 16 E

TYPE MONUMENT _____ PK/WASHER _____

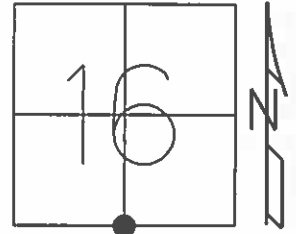
ON SURFACE - ~~BELOW~~ ON _____

LEFT - ℄ PAV'T - RIGHT _____ ON _____

9.4' TO LT EDGE PAVEMENT

S.L.M. _____ 829+02 _____

GRID: NORTHING: 563831.2224 EASTING: 1824082.2495

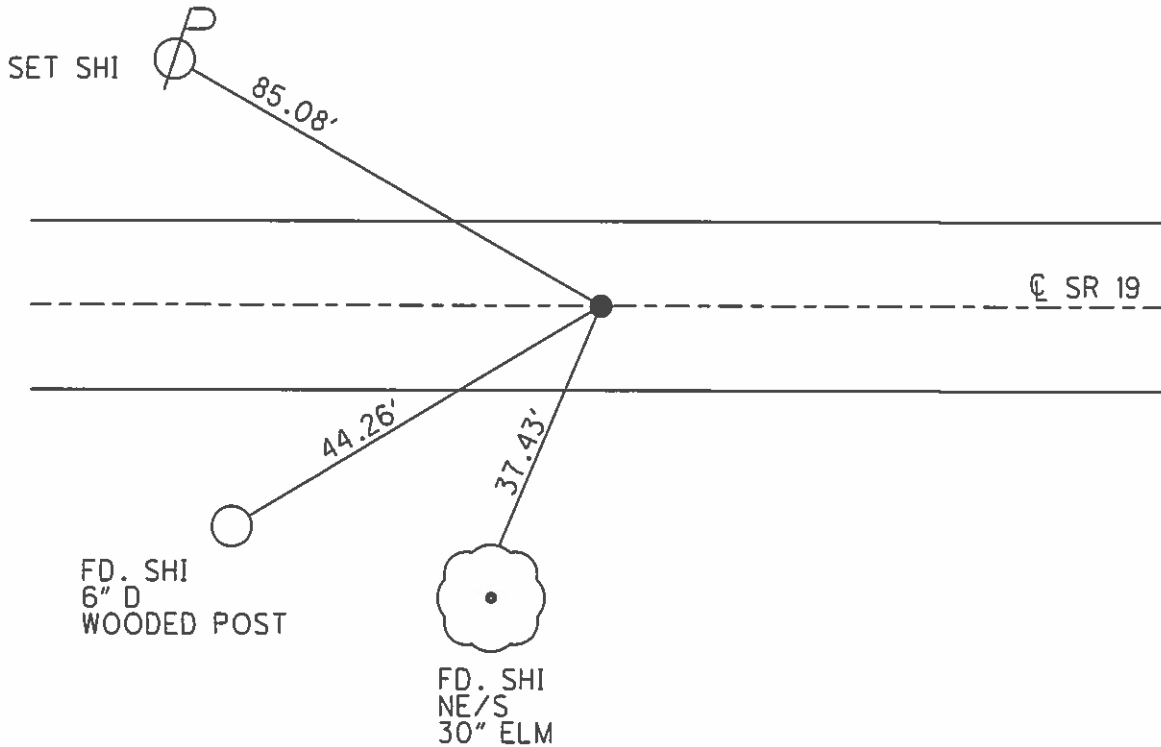


10-02-96 RESET PK/WASHER
07-15-09 FD PK/WASHER
07-15-10 FD PK/WASHER

FD PK/WASHER
GPS, REF70
4-26-16

UNCOVERED
8-23-16, JFO

PREVENTATIVE MAINTENANCE
CHIP & SEAL 2003
EXISTING POINT UNCOVERED
DATE 12-15-03



O.D.O.T. DISTRICT 2 SURVEY OFFICE

PERSONNEL

REFERENCE NO. 70

SHEET 1 OF 10

NOTES BARNHISEL Cuff

5/21/03

H.C. " " Jon

DATE 9-4-96

ROUTE 19

R.C. CORDES Glen

WEATHER SUN

COUNTY SENECA

mm

TEMP. +80° 50°

TOWNSHIP ADAMS

SECTION 16

T 3 N R 16 E

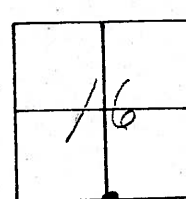
TYPE MONUMENT IRON PIPE

ON SURFACE - BELOW 2" Down

LEFT - & PAV'T. - RIGHT 0.3' LT

9.4 TO LT EDGE PAVEMENT

S.L.M. 829 + 02

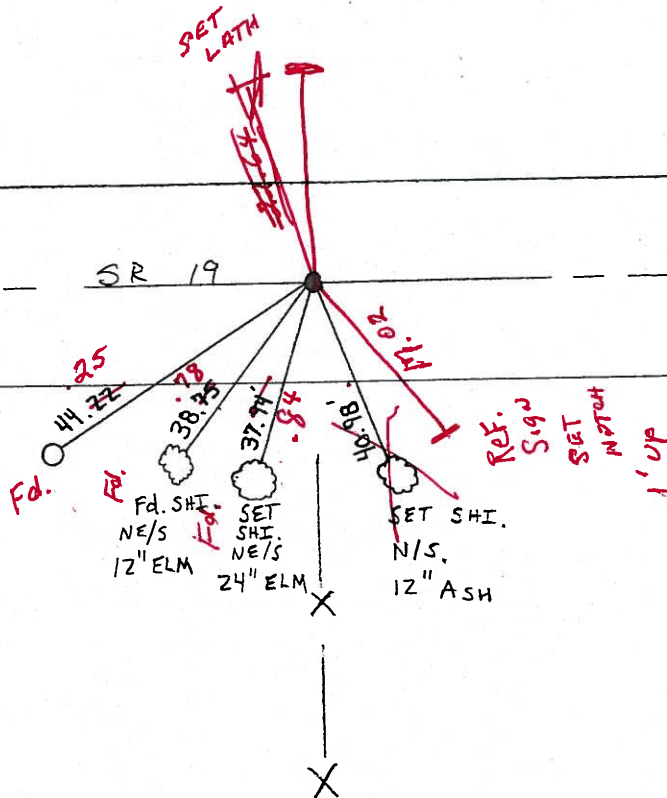


RESET P.K. + WASHER
 10-2-96 M.D.B. ✓

UNLOCKED
12/15/03

(REC)
2662.98

& PAV'T ——— SR 19 ——— 2662.98 (REC)



O.D.O.T. DISTRICT 2 SURVEY OFFICE

PERSONNEL _____

REFERENCE NO. 70

SHEET 1 OF 10

NOTES BARNHISEL

H.C. " "

R.C. CORDES

DATE 9-4-96

WEATHER SUN

TEMP. +80°

ROUTE 19

COUNTY SENECA

TOWNSHIP ADAMS

SECTION 16

T 3 N R 16 E

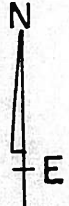
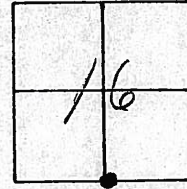
TYPE MONUMENT IRON PIPE

ON ~~SURFACE~~ - BELOW 2" DOWN

LEFT- & PAV'T. - ~~RIGHT~~ 0.3' LT

9.4 TO LT EDGE PAVEMENT

S.L.M. 829 + 02



RESET P.K. + WASHER
10-2-96 M.D.B

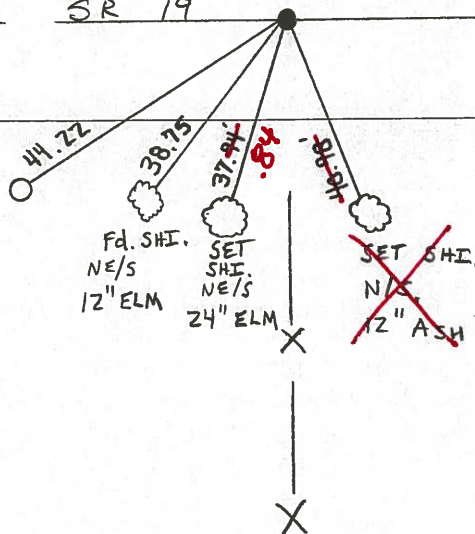
Preventive Maintenance
Chip & Seal 2003
Existing Point Uncovered
Date 12/15/03

(REC)
2662.98

Q PAVT

SR 19

2662.98 (REC)



O.D.O.T. DISTRICT 2 SURVEY OFFICE

28

PERSONNEL

REFERENCE NO. 70

SHEET OF

NOTES CRONIN

H.C. RIPPLE

R.C. GEYMAN

DATE 9/4/85

WEATHER SUNNY

TEMP. 80°

ROUTE #19

COUNTY SENECA

TOWNSHIP ADAMS

SECTION

T 3 N R 16 E

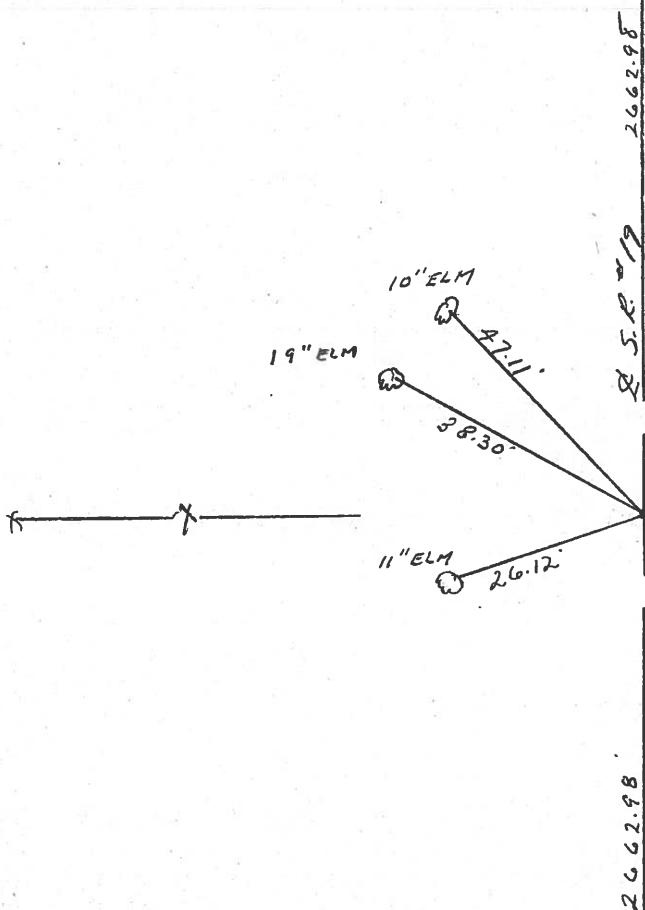
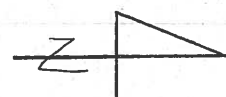
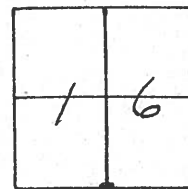
TYPE MONUMENT P.K. & WASHER AT OP I. PIPE

ON SURFACE - BELOW ON SURFACE

LEFT - Q PAV'T. - RIGHT R PAVT.

TO EDGE PAVEMENT

S.L.M. 157 ±



PERSONNEL TITLE PERSONNEL TITLE

COUNTY Seneca

DATE Drawn 6/22/72

Ash
Cronin
Ripple
Anderson

S. R. #19

WEATHER

Vinson

SEC.

TEMP.

DESCRIPTION Ties for Control Points - Republic North

JOB NO.

LEFT

CENTER LINE

RIGHT

Did not make temp corrections

Adams Twp.

I.C.H 515
5/4 post Sec. 16
N 7/4 post Sec. 21
Straight line shot
from N.W. Cor. & N.E.
Cor. of Sec. 21 &
split of mile - looks good
Set I. pipe

#70

14" elm

38.57'

2662.98'

72.05'

8" ash

6/19/72
Temp. 88°

8" elm

26.17'

2662.98'

95.83'

6" locust

* Dug 5'x5' hole
with no results

Sec. 21
Sec. 16



Adams Twp.

I.C.H 485
Section Corner
Fd. stone 15" down
Set galvanized bolt
at top & to the surface

#69

cone. mon.

64.10'

44.50'

Sec. 16
Sec. 15

S.R. #228

49.88'

C.R. #32

6/19/72
Temp. 88°

S.R. #19

Sec. 21
Sec. 22

S.R. #19

36.77'

