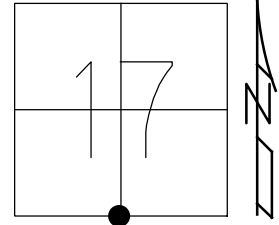


O.D.O.T. DISTRICT 2 SURVEY OFFICE (USE ONLY)

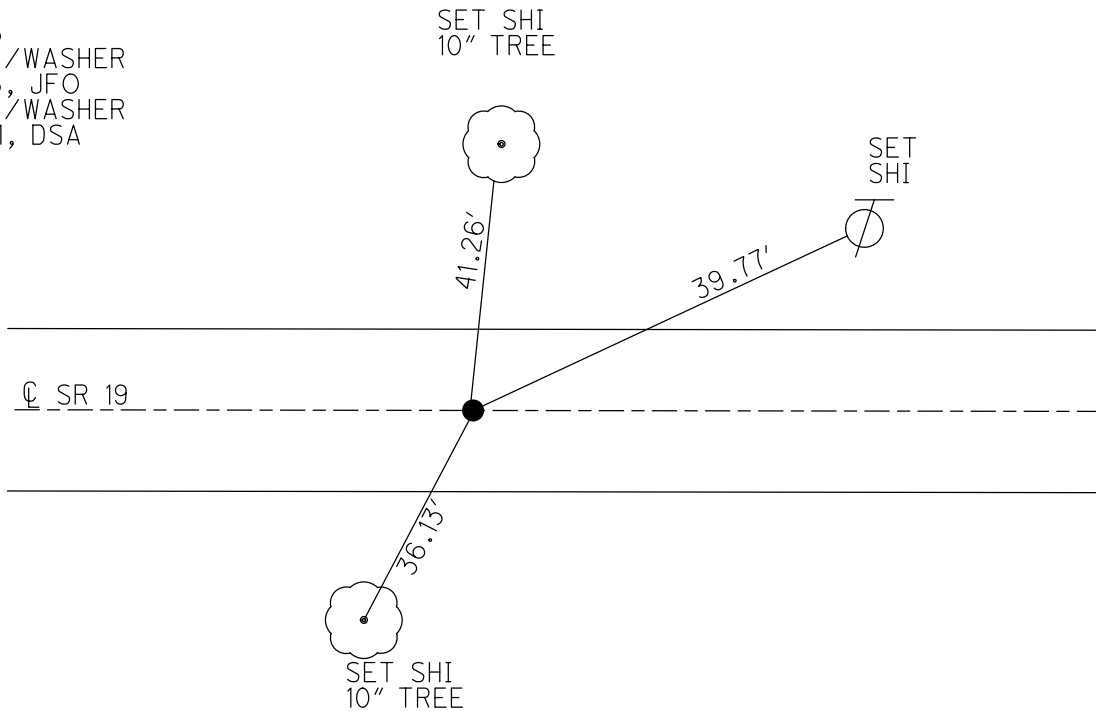
PERSONNEL \_\_\_\_\_ REFERENCE NO. 73 SHEET 23 OF 32  
 NOTES NIESE DATE 7/30/21 ROUTE SR 19  
 H.C. AUBLE WEATHER CLOUDY COUNTY SENECA  
 R.C. NIESE TEMP. 75° TOWNSHIP ADAMS  
 DWG BY WHITAKER PID 97424 SECTION 17  
 T 3 N R 16 E

TYPE MONUMENT P.K./WASHER  
 ON SURFACE - BELOW ON  
 OFFSET  $\odot$  PAVEMENT ON LT : RT  
8.5' TO LT EDGE PAVEMENT  
 STATION: 882+41

HORZ. DATUM: NAD83 (2011) GEOID: 2012A  
 GRID: NORTHING: 563856.248 EASTING: 1818750.097



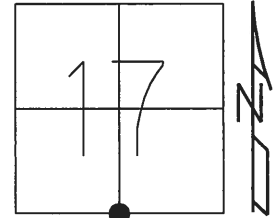
RECORD:  
 FD P.K./WASHER  
 ATOP GALV. BOLT  
 9/4/96, KPM  
 SET P.K./WASHER  
 10-02-96  
 FD P.K./WASHER  
 12-15-03, 7-15-09  
 7-15-10  
 FD P.K./WASHER  
 REF 73  
 4-26-16  
 FD P.K./WASHER  
 8-23-16, JFO  
 FD P.K./WASHER  
 7-30-21, DSA



O.D.O.T. DISTRICT 2 SURVEY OFFICE (USE ONLY)

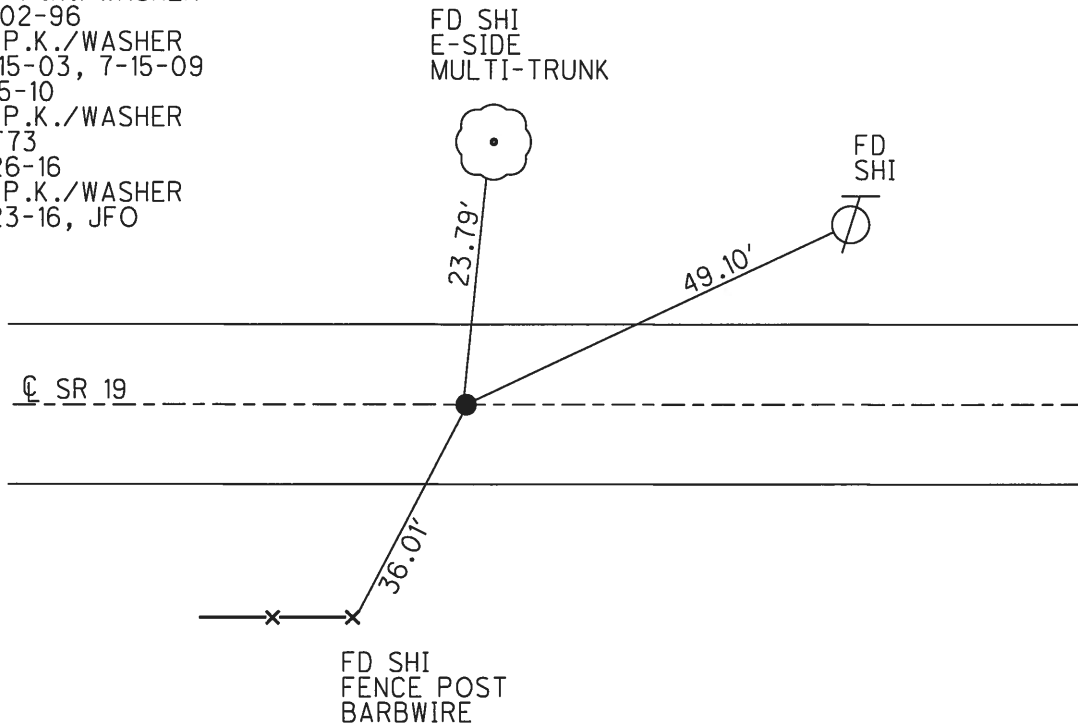
PERSONNEL \_\_\_\_\_ REFERENCE NO. 73 SHEET 18 OF 27  
 NOTES RHOADES DATE 4-26-16 ROUTE SR 19  
 H.C. O'DONNELL WEATHER SUNNY COUNTY SENECA  
 R.C. RHOADES TEMP. 70° TOWNSHIP ADAMS  
 \_\_\_\_\_ SECTION 17  
 \_\_\_\_\_ T 3 N R 16 E

TYPE MONUMENT P.K./WASHER  
 ON SURFACE - ~~BELOW~~ ON  
 LEFT - Q PAV'T - ~~RIGHT~~ 0.8'  
8.5' TO LT EDGE PAVEMENT  
 S.L.M. 882+41



GRID: NORTHING: 563856.248 EASTING: 1818750.097

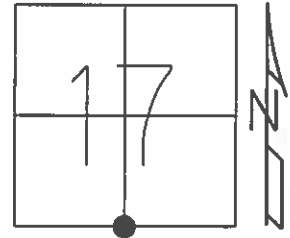
RECORD:  
 FD P.K./WASHER  
 ATOP GALV.BOLT  
 9/4/96, KPM  
 SET P.K./WASHER  
 10-02-96  
 FD P.K./WASHER  
 12-15-03, 7-15-09  
 7-15-10  
 FD P.K./WASHER  
 REF 73  
 4-26-16  
 FD P.K./WASHER  
 8-23-16, JFO



O.D.O.T. DISTRICT 2 SURVEY OFFICE (USE ONLY)

PERSONNEL	REFERENCE NO.	<u>73</u>	SHEET	<u>18</u>	OF	<u>24</u>
NOTES	<u>RHOADES</u>	DATE	<u>4-26-16</u>	ROUTE	<u>SR 19</u>	
H.C.	<u>O'DONNELL</u>	WEATHER	<u>SUNNY</u>	COUNTY	<u>SENECA</u>	
R.C.	<u>RHOADES</u>	TEMP.	<u>70°</u>	TOWNSHIP	<u>ADAMS</u>	
				SECTION	<u>17</u>	
				T	<u>3</u>	R
					<u>N</u>	<u>16</u>
					<u>E</u>	

TYPE MONUMENT PK/WASHER  
 ON SURFACE - ~~BELOW~~ ON  
 LEFT - Q PAV'T - ~~RIGHT~~ 0.8'  
8.5' TO LT EDGE PAVEMENT  
 S.L.M. 882+41



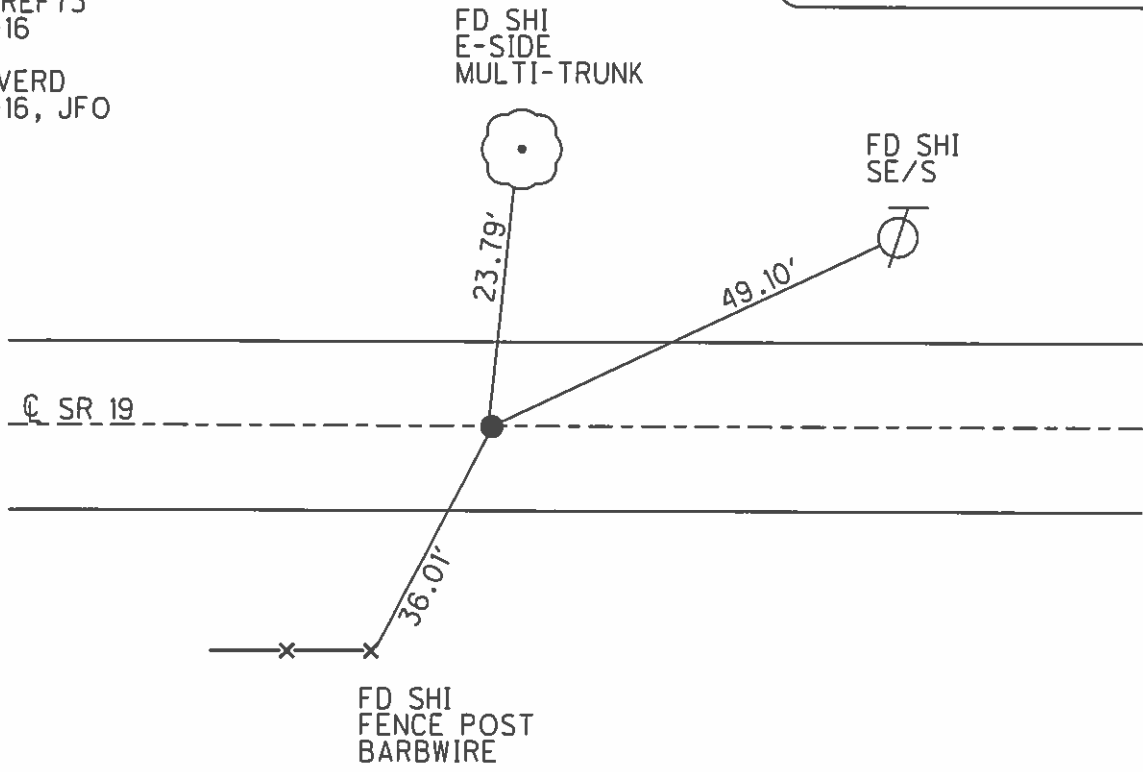
GRID: NORTHING: 563856.2476 EASTING: 1818750.0967

10-02-96 RESET PK/WASHER  
 07-15-09 FD PK/WASHER  
 07-15-10 FD PK/WASHER

FD. PK/WASHER  
 GPS, REF73  
 4-26-16

UNCOVERED  
 8-23-16, JFO

PREVENTATIVE MAINTENANCE  
 CHIP & SEAL 2003  
 EXISTING POINT UNCOVERED  
 DATE 12-15-03



# O.D.O.T. DISTRICT 2 SURVEY OFFICE

PERSONNEL

REFERENCE NO. 73

SHEET 4 OF 10

NOTES BARNHISEL *Ruff*

H.C. CORDES *Jon*

R.C. BARNHISEL *Glen*  
*m.m.*

DATE 5-21-03  
~~9-4-96~~

WEATHER SUN

TEMP. + 80° 50°

ROUTE 19

COUNTY SENECA

TOWNSHIP ADAMS

SECTION 17

T 3 N R 16 E

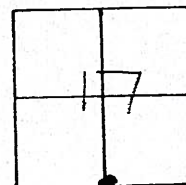
TYPE MONUMENT P.K./WASHER ATOP GALV. BOLT

ON SURFACE - ~~BELOW~~ SURFACE

LEFT- ☉ PAVT. - ~~RIGHT~~ 0.8' LT ☉

8.5' TO LT EDGE PAVEMENT

S.L.M. 882 + 41



RECORD: THERE IS SOME TYPE  
OF POINT 2' S & 1' W OF THIS  
POINT. MAY BE ACTUAL CORNER.  
WILL USE JACK HAMMER & COMPRESSOR  
WHEN TIME PERMITS.

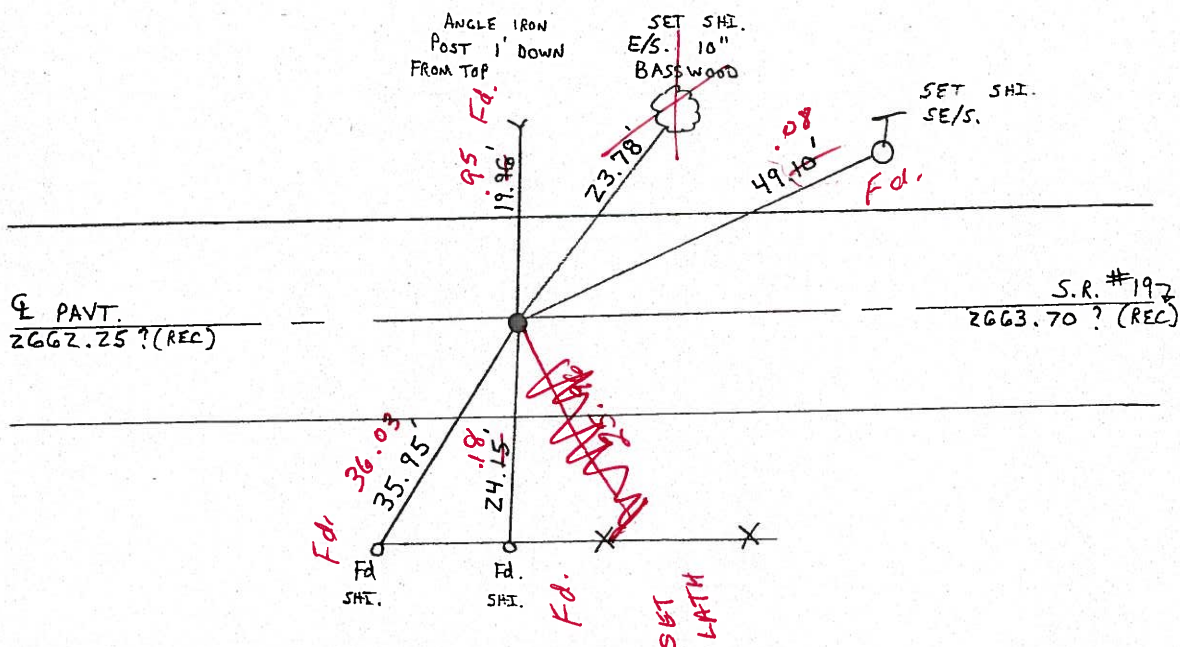
ALSO - POINT REFERENCED WAS  
SPLIT OF PAVEMENT

DISTANCES MAY HAVE BEEN REVERSED

RESET PK/WASHER

10-2-96 M.D.B.

UNCOVERED  
12/15/03



# O.D.O.T. DISTRICT 2 SURVEY OFFICE

PERSONNEL

REFERENCE NO. 73

SHEET 4 OF 10

NOTES BARNHISEL

H.C. CORDES

R.C. BARNHISEL

DATE 9-4-96

WEATHER SUN

TEMP. + 80°

ROUTE 19

COUNTY SENECA

TOWNSHIP ADAMS

SECTION 17

T 3 N R 16 E

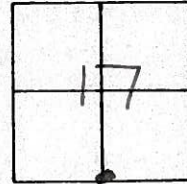
TYPE MONUMENT P.K./WASHER ATOP GALV. BOLT

ON SURFACE - BELOW SURFACE

LEFT-~~Q~~ PAV'T. - RIGHT 0.8' LT Q

8.5' TO LT EDGE PAVEMENT

S.L.M. 882 + 41

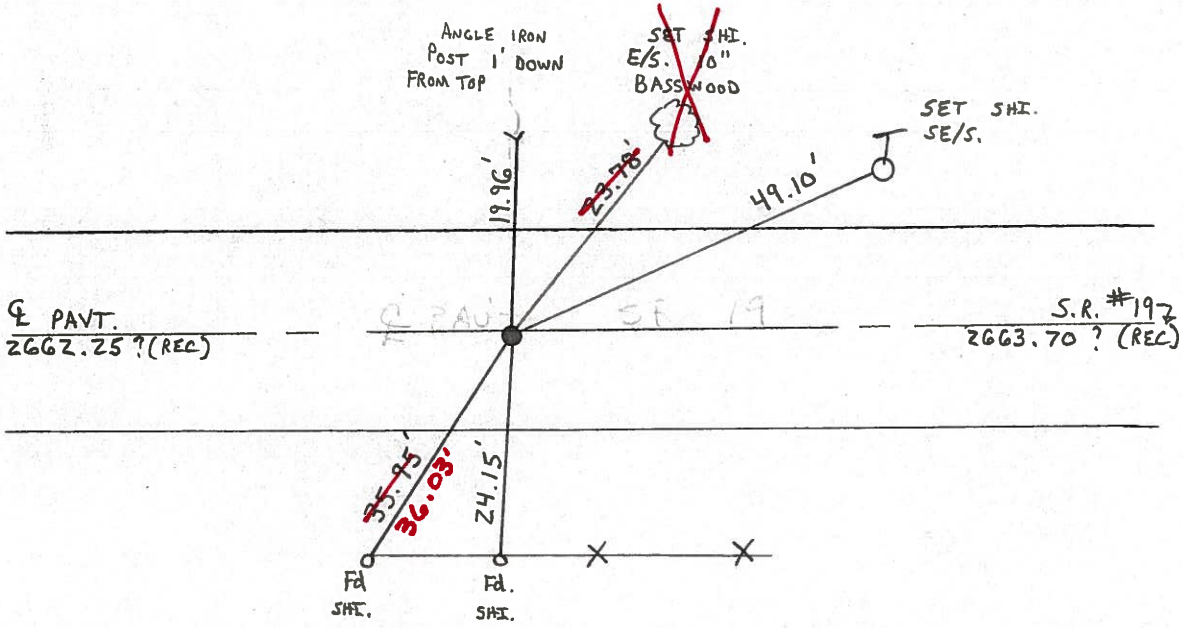


RECORD: THERE IS SOME TYPE OF POINT 2' S & 1' W OF THIS POINT. MAY BE ACTUAL CORNER. WILL USE JACK HAMMER & COMPRESSOR WHEN TIME PERMITS.

ALSO - POINT REFERENCED WAS SPLIT OF PAVEMENT DISTANCES MAY HAVE BEEN REVERSED

RESET PK/WASHER  
10-2-96 M.D.B.

Preventive Maintenance  
Chip & Seal 2003  
Existing Point Uncovered  
Date 12/15/03





O.D.O.T. DISTRICT 2 SURVEY OFFICE (31)

PERSONNEL

REFERENCE NO. 73

SHEET \_\_\_\_\_ OF \_\_\_\_\_

NOTES CROWIN

DRAWN 9/9/85

H.C. RIPPLE

DATE 9/4/85

R.C. GEYMAN

WEATHER SUNNY

TEMP. 80°

ROUTE #19

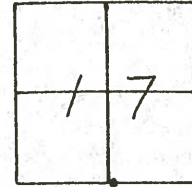
COUNTY SENECA

TOWNSHIP ADAMS

SECTION 17

T 3 N R 16 E

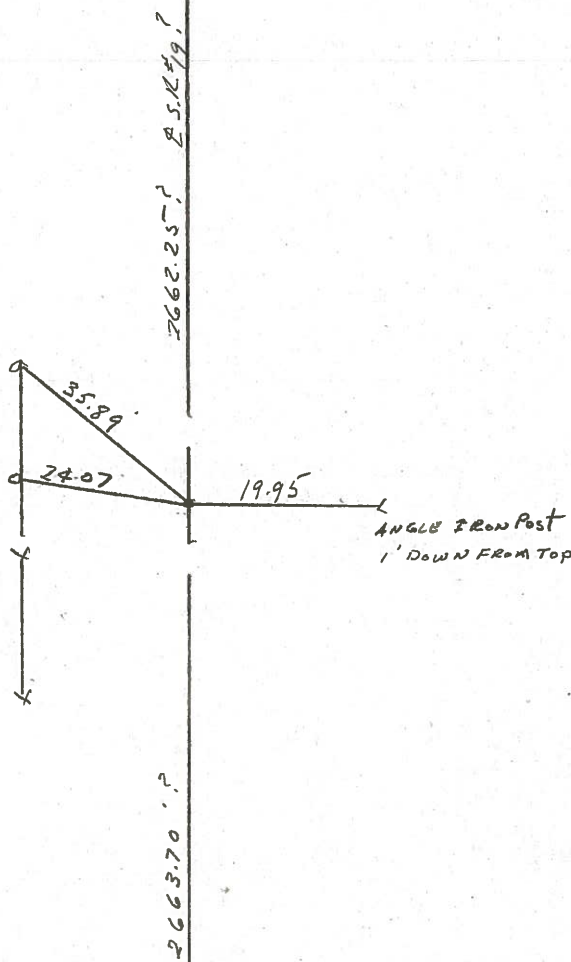
TYPE MONUMENT P.K. WASHER AT OP GALV. BOLT  
 ON SURFACE - BELOW ON SURFACE  
 LEFT - ☉ PAV'T. - RIGHT ☉ PAV'T.  
 TO EDGE PAVEMENT  
 S.L.M. 16.7 ±



THERE IS SOME TYPE OF  
POINT 2' S & 1' W OF POINT  
TIED IN. MAY BE ACTUAL COR-  
NER. WILL USE JACK HAMMER &  
COMPRESSOR WHEN TIME PERMITS

POINT REFERENCED WAS SPLIT  
OF PAVEMENT

DISTANCES MAY HAVE BEEN  
REVERSED



PERSONNEL TITLE PERSONNEL TITLE COUNTY Seneca DATE drawn 10/11/72  
Ash \_\_\_\_\_ \_\_\_\_\_ \_\_\_\_\_  
Cronin \_\_\_\_\_ \_\_\_\_\_ \_\_\_\_\_  
Ripple \_\_\_\_\_ \_\_\_\_\_ \_\_\_\_\_  
Anderson \_\_\_\_\_ \_\_\_\_\_ \_\_\_\_\_  
 S. R. #19 (I.C.H 515) WEATHER overcast  
 SEC. \_\_\_\_\_ TEMP. 54°  
 DESCRIPTION Ties for Control Points - Republic - North JOB NO. \_\_\_\_\_

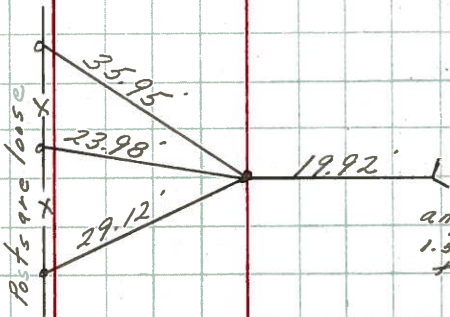
LEFT CENTER LINE RIGHT



Adams Twp.

Tied 6/20/72  
Temp 75°

Set galvanized bolt  
Used proration of  
mile which fits fence  
line & split pavement.  
Point set mainly to  
hold distance and is  
not necessary for post



angle iron post  
1.5' down from  
top

Sec 20  
Sec. 17

\* Dug 2 1/2' x 2' hole with  
no results.  
Also by jacking in between  
mile, we came to conclusion  
that there has to be an angle  
at the N 1/4 post of Sec. 21 E,  
S 1/4 Post of Sec. 17

#73