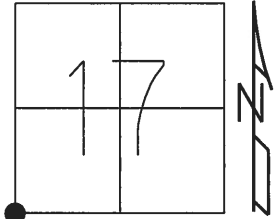


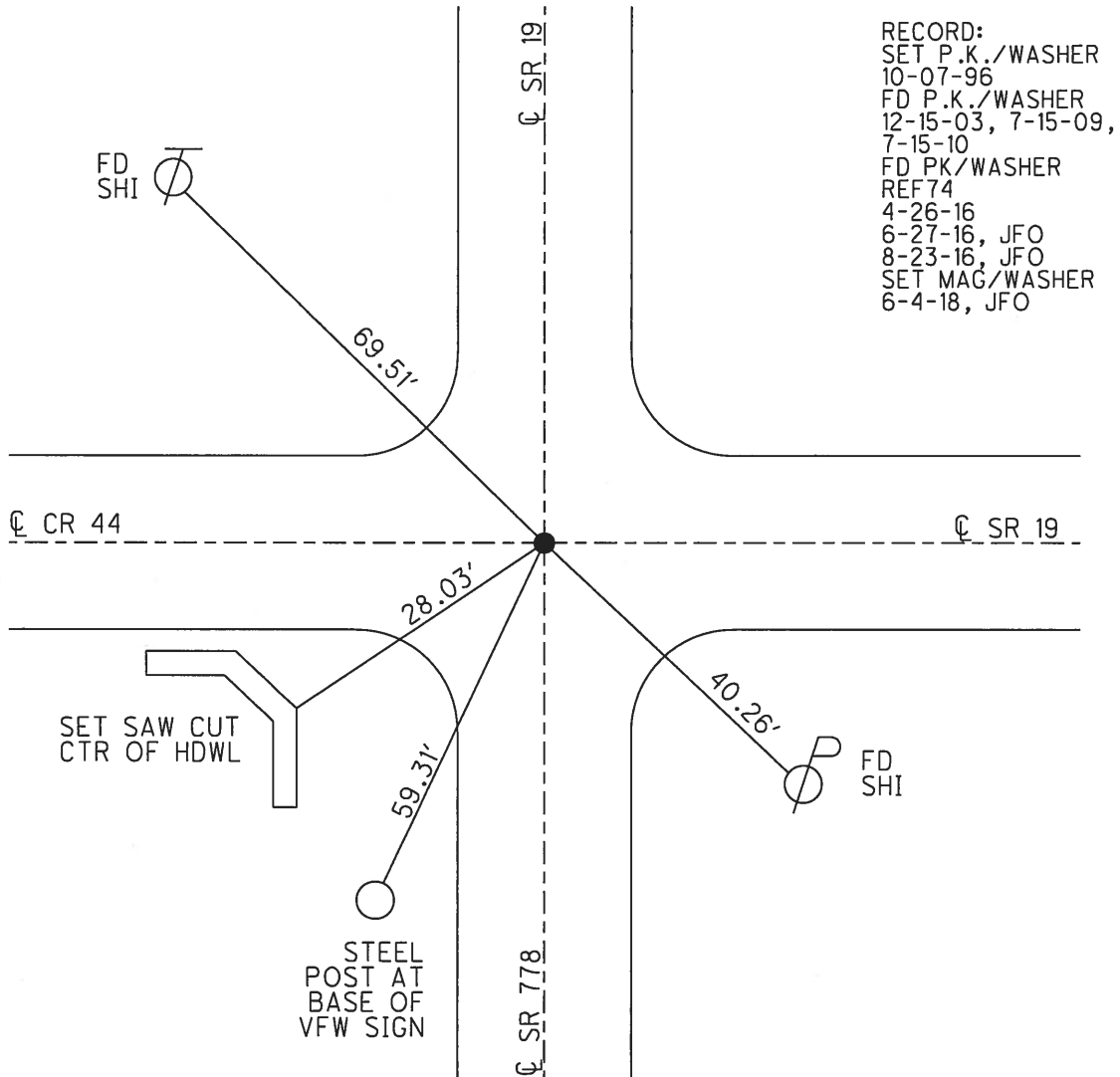
O.D.O.T. DISTRICT 2 SURVEY OFFICE (USE ONLY)

PERSONNEL _____ REFERENCE NO. 74 SHEET 19 OF 27
 NOTES RHOADES DATE 6-4-18 ROUTE SR 19
 H.C. O'DONNELL WEATHER CLOUDY COUNTY SENECA
 R.C. TRENKA TEMP. 62° TOWNSHIP ADAMS
 _____ SECTION 17
 _____ T 3 N R 16 E

TYPE MONUMENT MAG/WASHER
 ON SURFACE - ~~BELOW~~ ON
 LEFT - ☉ PAV'T - RIGHT ON
9.0' TO LT EDGE PAVEMENT
 S.L.M. 908+68.80



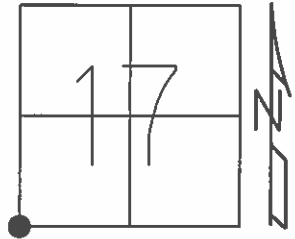
GRID: NORTHING: 563918.290 EASTING: 1816026.018



O.D.O.T. DISTRICT 2 SURVEY OFFICE (USE ONLY)

PERSONNEL _____ REFERENCE NO. 74 SHEET 19 OF 24
 NOTES RHOADES DATE 4-26-16 ROUTE SR 19
 H.C. O'DONNELL WEATHER SUNNY COUNTY SENECA
 R.C. RHOADES TEMP. 70° TOWNSHIP ADAMS
 _____ SECTION 17
 _____ T 3 N R 16 E

TYPE MONUMENT _____ PK/WASHER _____
~~ON SURFACE~~ - BELOW ON
 LEFT - Q PAV'T - RIGHT ON
9.0' TO LT EDGE PAVEMENT
 S.L.M. _____ 909+70
 GRID: NORTHING: 563918.291 EASTING: 1816026.0682

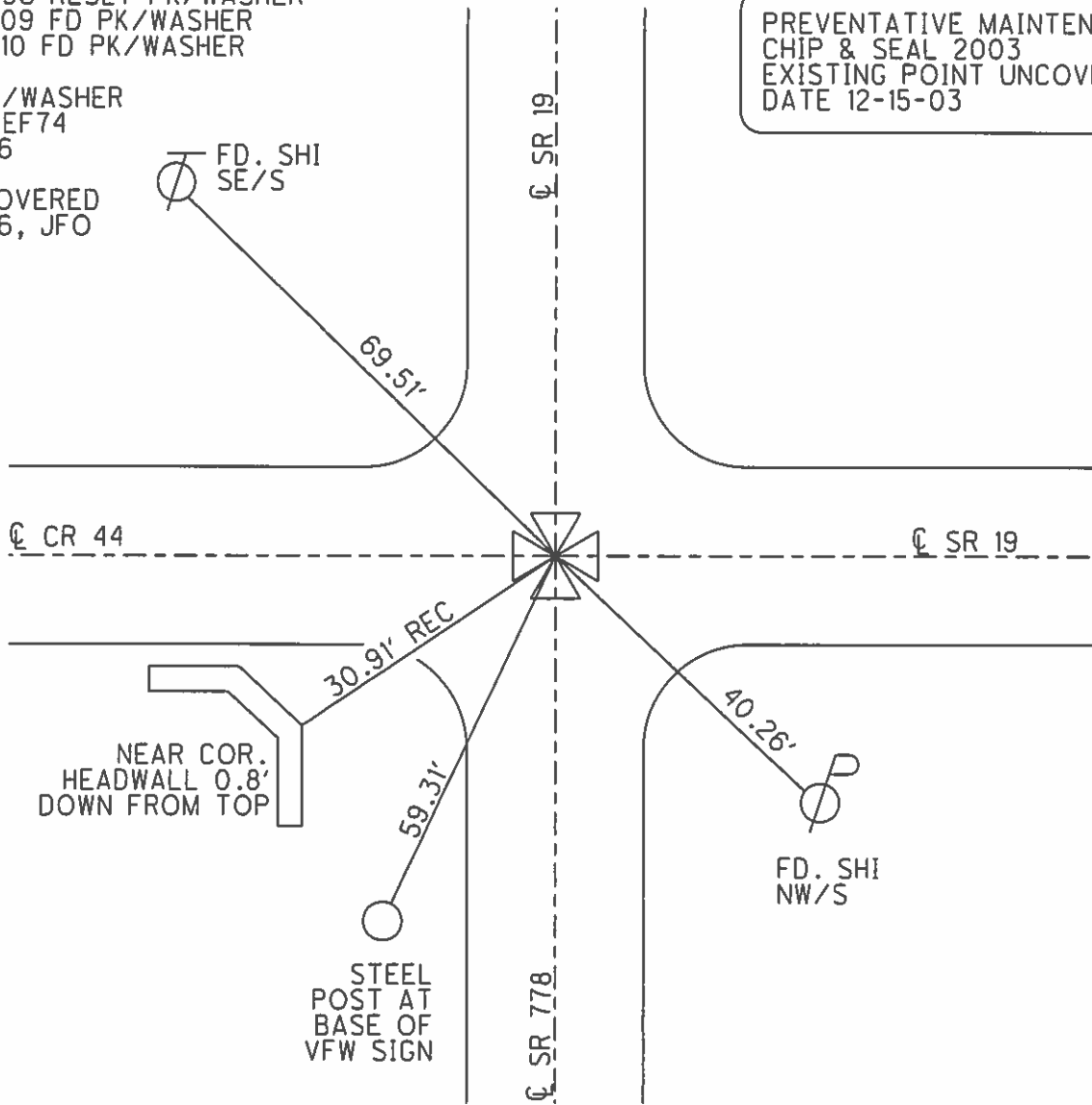


10-07-96 RESET PK/WASHER
 07-15-09 FD PK/WASHER
 07-15-10 FD PK/WASHER

FD. PK/WASHER
 GPS, REF74
 4-26-16

NOT COVERED
 8-23-16, JFO

PREVENTATIVE MAINTENANCE
 CHIP & SEAL 2003
 EXISTING POINT UNCOVERED
 DATE 12-15-03



O.D.O.T. DISTRICT 2 SURVEY OFFICE

PERSONNEL

REFERENCE NO. 74

SHEET 5 OF 10

NOTES BARNHISEL Cuff

H.C. CORDES JON

R.C. BARNHISEL GLEN

MM

DATE 5/21/03
~~9-4-96~~

WEATHER SUN

TEMP. +75° 50°

ROUTE 19

COUNTY SENECA

TOWNSHIP ADAMS

SECTION 17, 18, 19, 20

T 3 N R 16 E

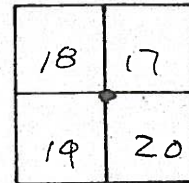
TYPE MONUMENT GALV. BOLT

ON SURFACE - BELOW 1.5" BELOW

LEFT - & PAVT. - RIGHT ON & PAVT. N.

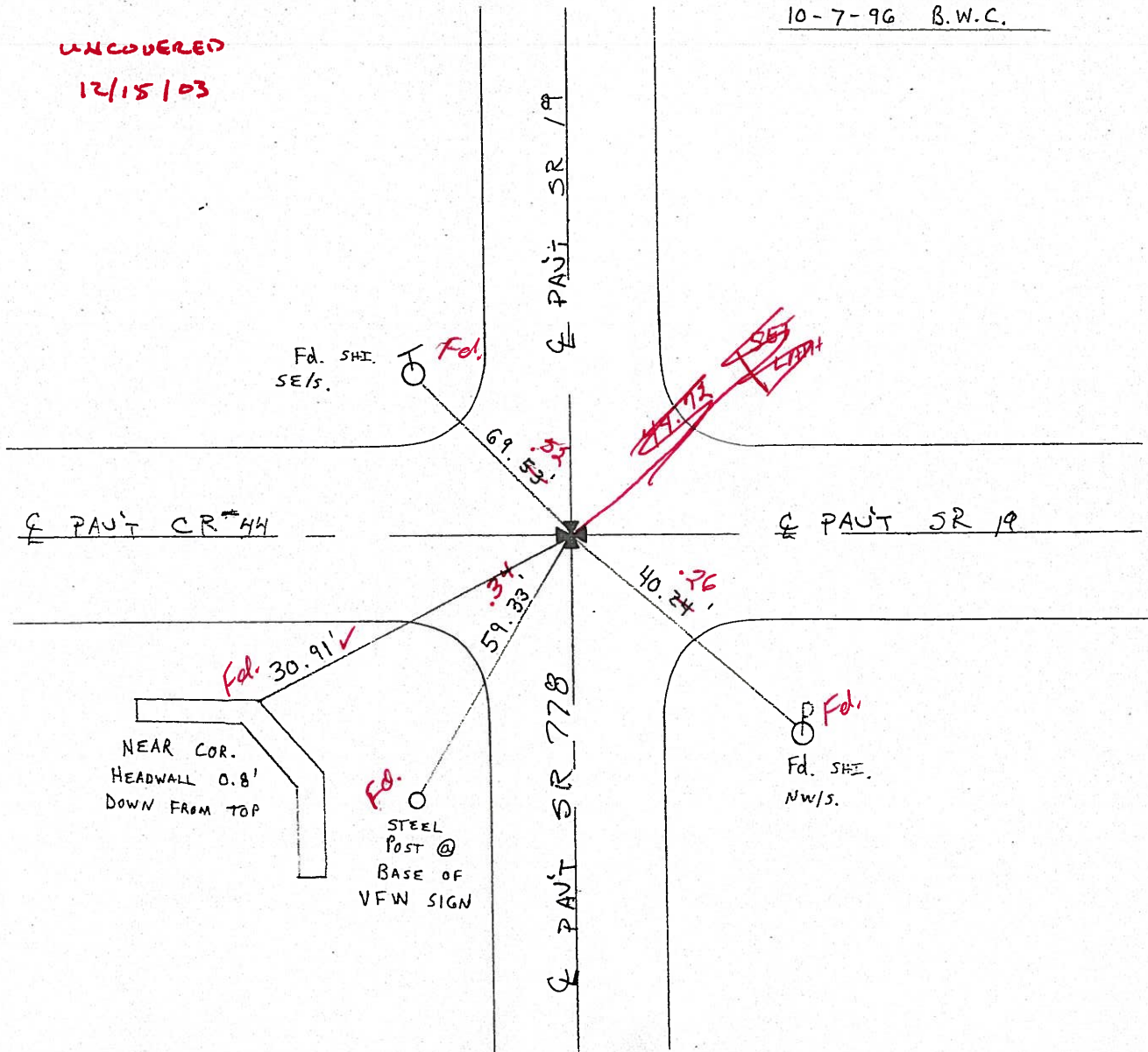
9.0 TO LT EDGE PAVEMENT

S.L.M. 909 + 70



RESET P.K. + WASHER
10-7-96 B.W.C.

UNCOVERED
12/15/03



O.D.O.T. DISTRICT 2 SURVEY OFFICE

PERSONNEL

REFERENCE NO. 74

SHEET 5 OF 10

NOTES BARNHISEL

H.C. CORDES

R.C. BARNHISEL

DATE 9-4-96

WEATHER SUN

TEMP. +75°

ROUTE 19

COUNTY SENECA

TOWNSHIP ADAMS

SECTION 17, 18, 19, 20

T 3 N R 16 E

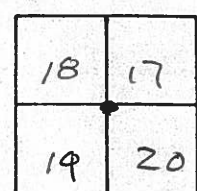
TYPE MONUMENT GALV. BOLT

~~ON SURFACE~~ - BELOW 1.5" BELOW

~~LEFT - & PAV'T. - RIGHT~~ ON & PAV'T. N.

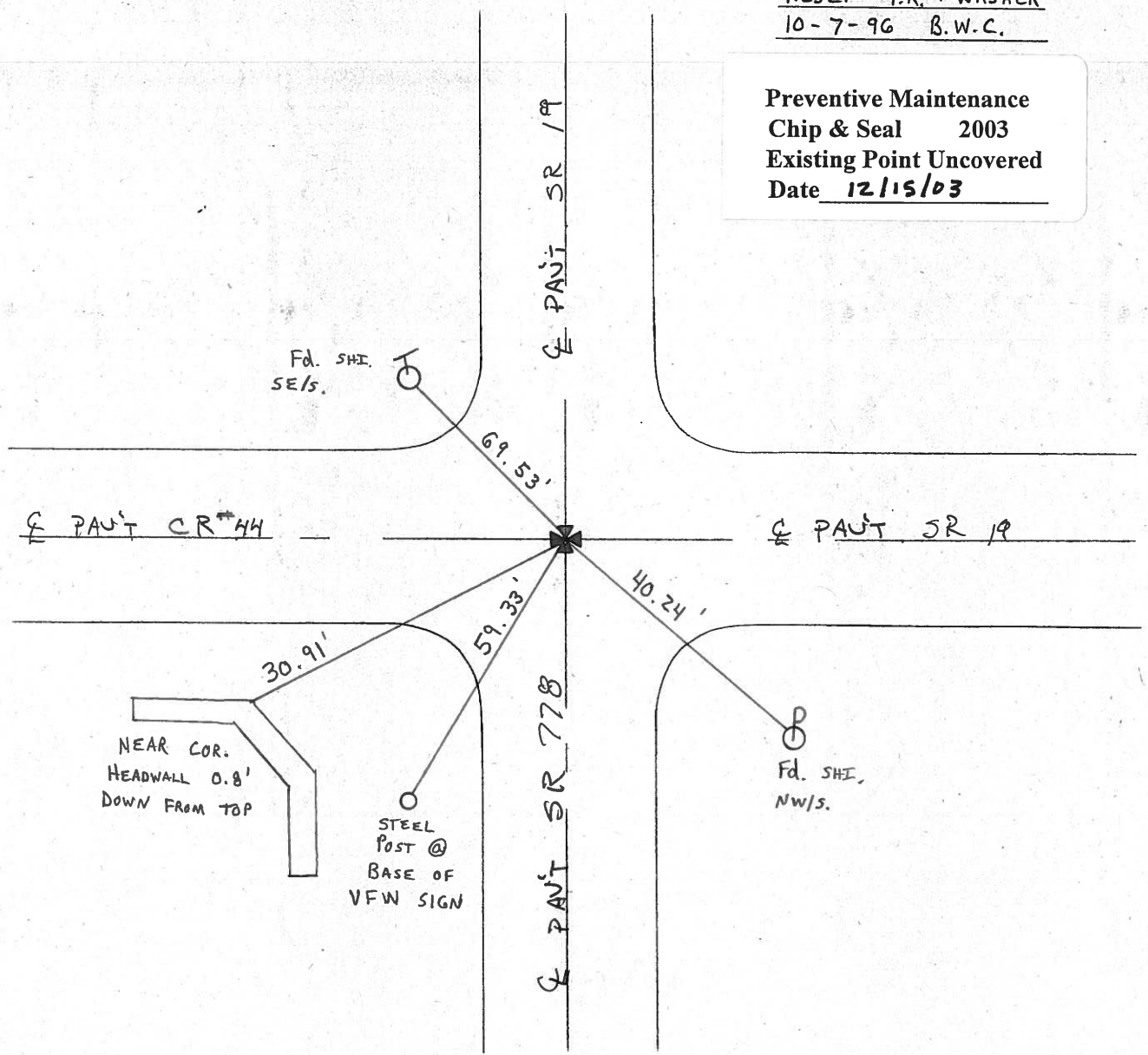
9.0 TO LT EDGE PAVEMENT

S.L.M. 909 + 70



RESET P.K. + WASHER
10-7-96 B.W.C.

Preventive Maintenance
Chip & Seal 2003
Existing Point Uncovered
Date 12/15/03



O.D.O.T. DISTRICT 2 SURVEY OFFICE (32)

PERSONNEL

REFERENCE NO. 74 SHEET _____ OF _____

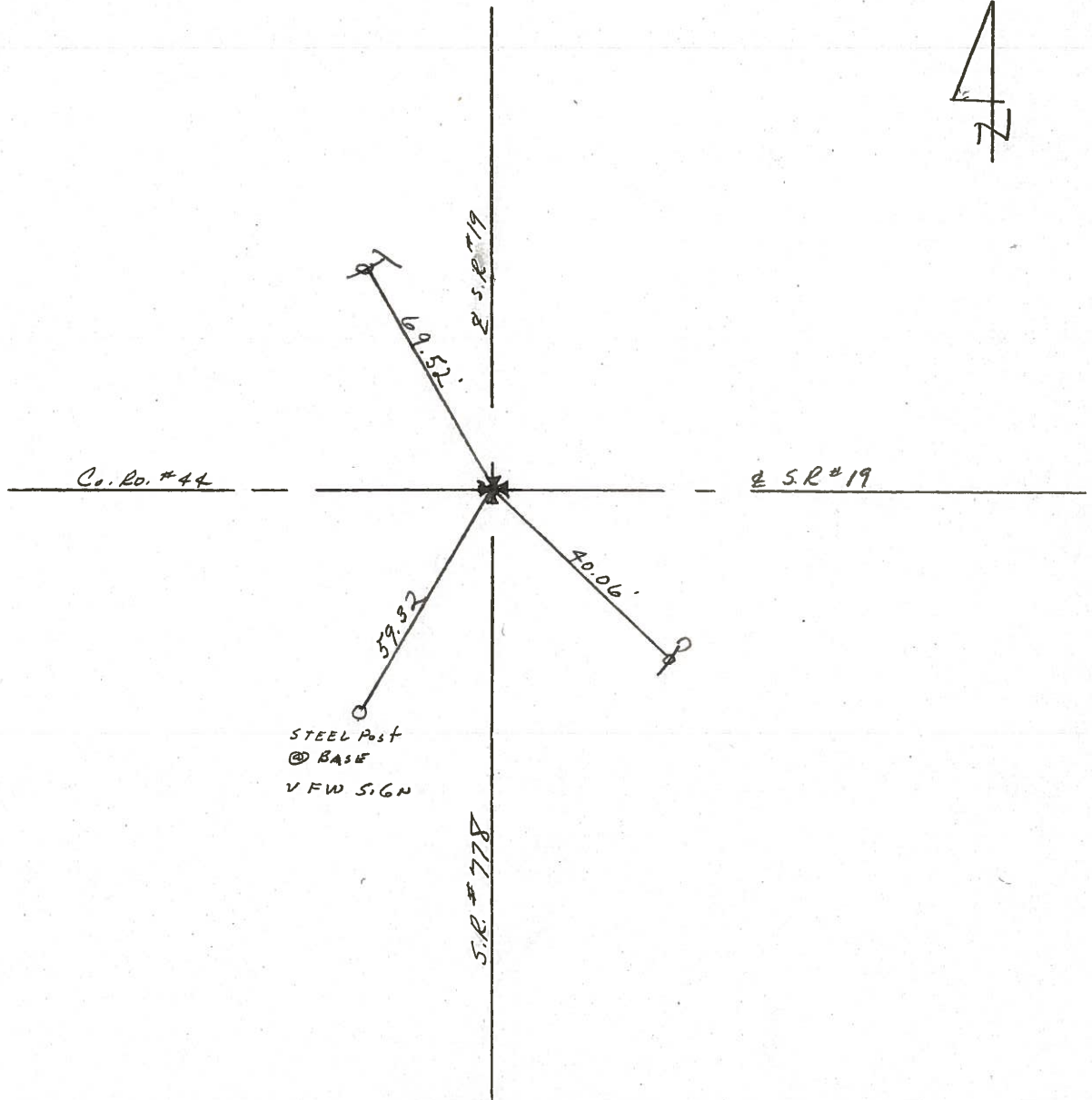
NOTES CROWIN
 H.C. RIPPLE
 R.C. BARBOUR
GEYMAN

DATE 9/9/85
 WEATHER CLOUDY
 TEMP. 80°

ROUTE #19
 COUNTY SENECA
 TOWNSHIP ADAMS
 SECTION 17, 18, 19, 20
T 3 N R 16 E

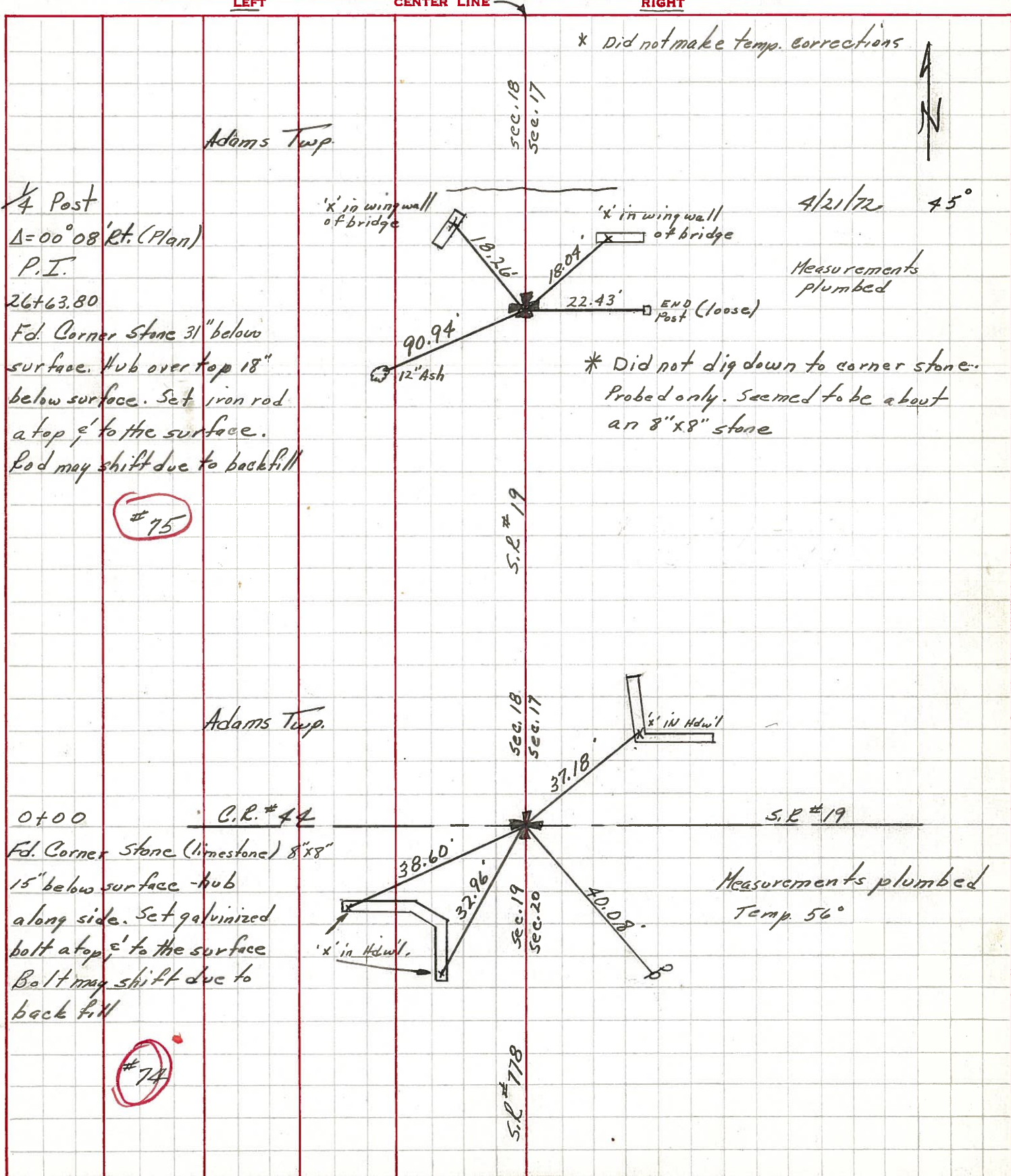
TYPE MONUMENT P.K. WASHER ATOP GALV. BOLT
ON SURFACE - BELOW ATOP STONE
LEFT - & PAV'T. - RIGHT ON SURFACE
TO EDGE PAVEMENT
 S.L.M. 17.2± 0+00

18	17
19	20



PERSONNEL	TITLE	PERSONNEL	TITLE	COUNTY	Seneca	DATE	4/25/72
Ash				S. R.	#19 (I.C.H. 515)	WEATHER	sunny
Cronin				SEC.	"A"	TEMP.	56°
Pipple		Vinson					
Anderson							

DESCRIPTION Ties for Control Points JOB NO. _____



1/4 Post
 $\Delta = 00^\circ 08' \text{ Rt. (Plan)}$
 P.I.
 26+63.80
 Fd. Corner Stone 31" below surface. Hub over top 18" below surface. Set iron rod a top 6' to the surface. Rod may shift due to backfill

#75

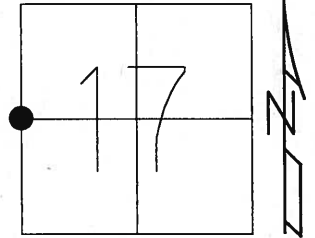
0+00
 C.R. #44
 Fd. Corner Stone (limestone) 8"x8"
 15" below surface - hub along side. Set galvanized bolt a top 6' to the surface Bolt may shift due to back fill

#74

O.D.O.T. DISTRICT 2 SURVEY OFFICE (USE ONLY)

PERSONNEL	REFERENCE NO. <u>75</u>	SHEET <u>20</u> OF <u>24</u>
NOTES <u>MOSER</u>	DATE <u>07-15-09</u>	ROUTE <u>SR 19</u>
H.C. <u>BARNHISEL</u>	WEATHER <u>SUN</u>	COUNTY <u>SENECA</u>
R.C. <u>MOSER</u>	TEMP. <u>75°</u>	TOWNSHIP <u>ADAMS</u>
		SECTION <u>17</u>
		T <u>3</u> N R <u>16</u> E

TYPE MONUMENT PK/WASHER ATOP IROD
 ON SURFACE - BELOW ON
 LEFT - CL PAV'T - RIGHT 0.5'
9.1' TO LT EDGE PAVEMENT
 S.L.M. 936+34



Grid: Northing: _____ Easting: _____

10-07-96 RESET PK/WASHER
 07-15-09 FD PK/WASHER
 07-15-10 FD PK/WASHER

PREVENTATIVE MAINTENANCE
 CHIP & SEAL 2003
 EXISTING POINT UNCOVERED
 DATE 12-15-03

