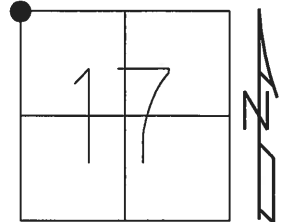


O.D.O.T. DISTRICT 2 SURVEY OFFICE (USE ONLY)

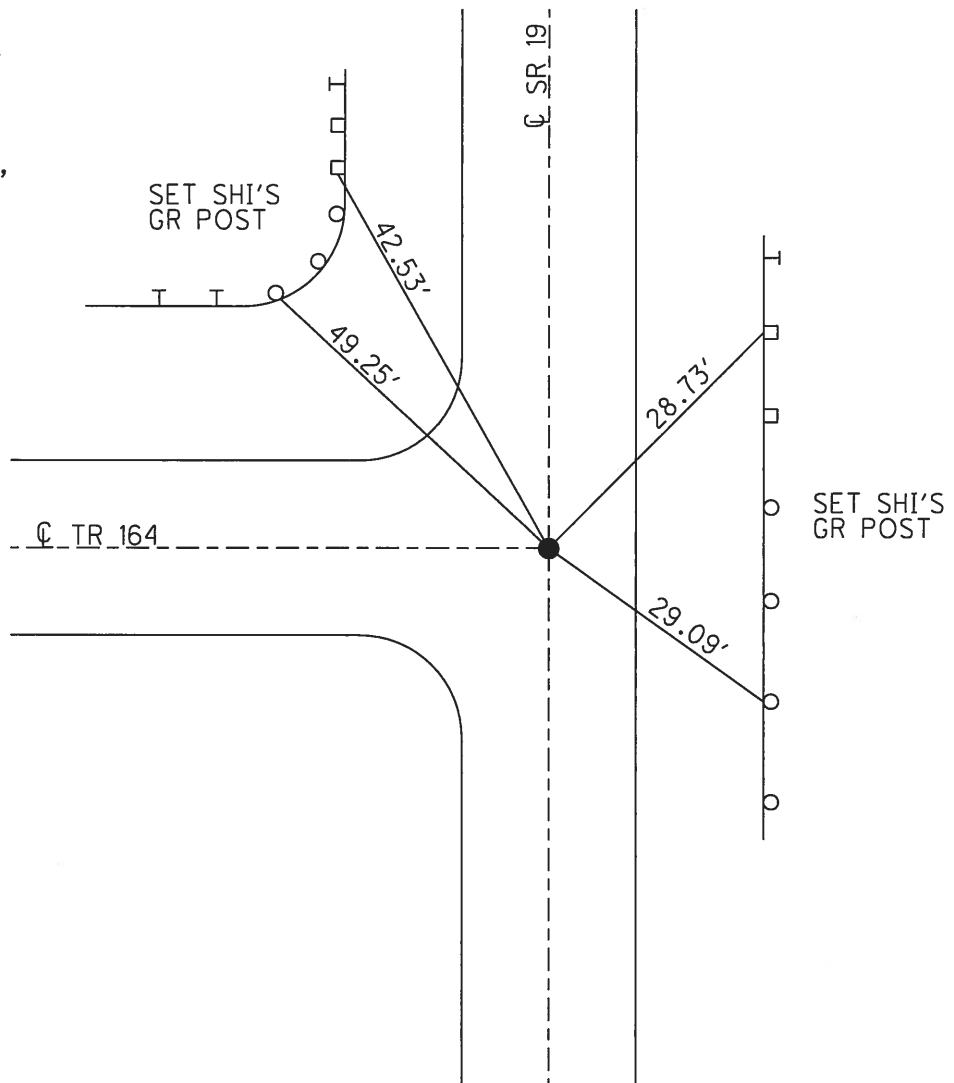
PERSONNEL \_\_\_\_\_ REFERENCE NO. 76 SHEET 21 OF 27  
 NOTES RHOADES DATE 6-4-18 ROUTE SR 19  
 H.C. O'DONNELL WEATHER CLOUDY COUNTY SENECA  
 R.C. TRENKA TEMP. 64° TOWNSHIP ADAMS  
 \_\_\_\_\_ SECTION 17  
 \_\_\_\_\_ T 3 N R 16 E

TYPE MONUMENT MAG/WASHER  
 ON SURFACE - ~~BELOW~~ ON  
 LEFT - Q PAV'T - ~~RIGHT~~ 1'  
12.3' TO RT EDGE PAVEMENT  
 S.L.M. 961+83.06



GRID: NORTHING: 569232.480 EASTING: 1816001.346

RECORD:  
 STA 104+14.45  
 STONE 18"± BELOW  
 SET P.K./WASHER  
 10-07-96  
 FD PK WASHER  
 12-15-03, 7-15-09,  
 7/15/10  
 FD P.K.NAIL  
 REF76  
 6-27-16, JFO  
 SET BY COORD  
 MAG/WASHER  
 6-4-18, JFO



O.D.O.T. DISTRICT 2 SURVEY OFFICE (USE ONLY)

PERSONNEL \_\_\_\_\_

REFERENCE NO. 76

SHEET 21 OF 24

NOTES MOSER

DATE 07-15-09

ROUTE SR 19

H.C. BARNHISEL

WEATHER SUN

COUNTY SENECA

R.C. MOSER

TEMP. 75°

TOWNSHIP ADAMS

SECTION 17

T 3 N R 16 E

TYPE MONUMENT \_\_\_\_\_ MON BOX \_\_\_\_\_

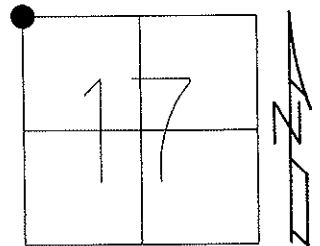
ON SURFACE - BELOW \_\_\_\_\_ ON \_\_\_\_\_

LEFT - ☉ PAV'T - RIGHT \_\_\_\_\_ 0.5'

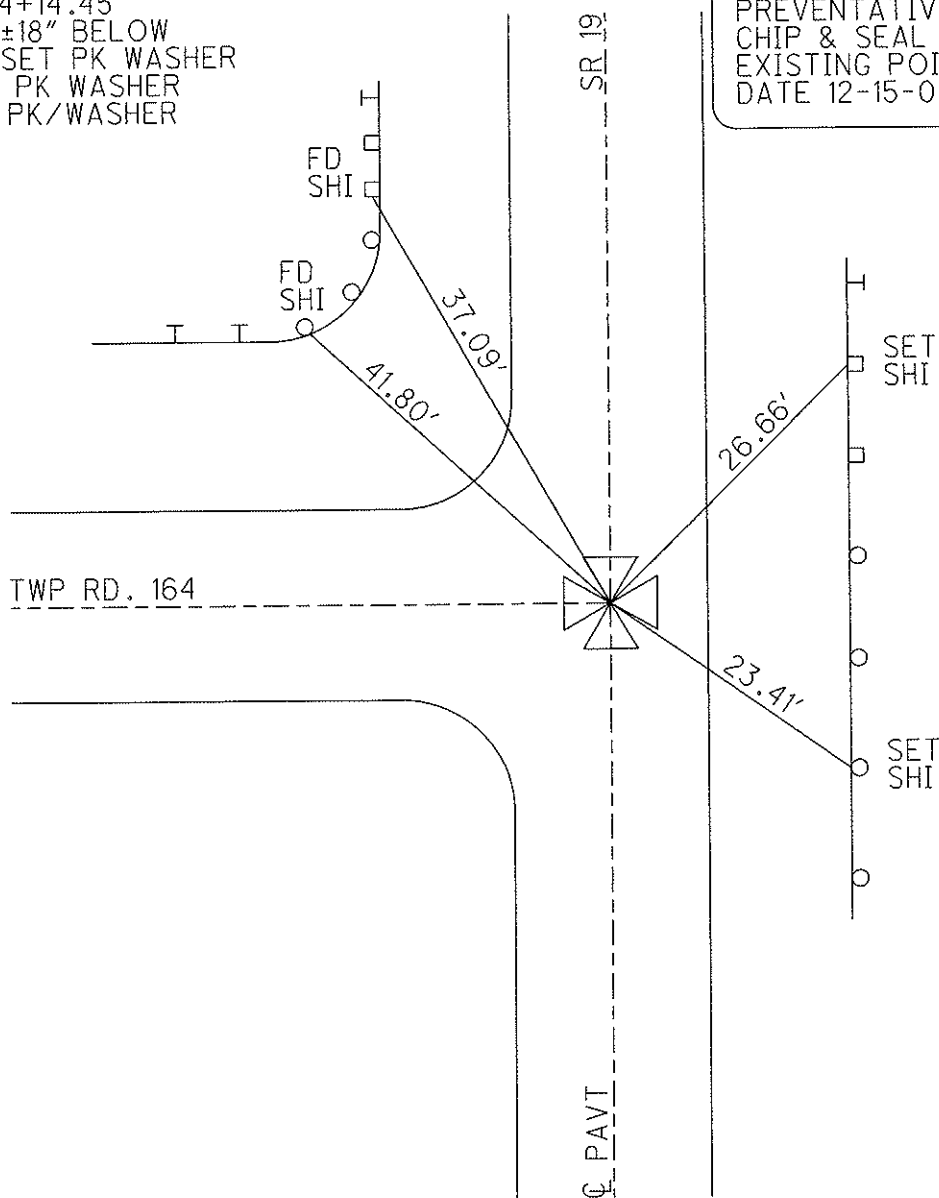
12.3' TO RT EDGE PAVEMENT

S.L.M. \_\_\_\_\_ 962+88 \_\_\_\_\_

Grid: Northing: \_\_\_\_\_ Easting: \_\_\_\_\_



REC. STA 104+14.45  
 STONE NOW ±18" BELOW  
 10-07-96 RESET PK WASHER  
 07-15-09 FD PK WASHER  
 07-15-10 FD PK/WASHER



PREVENTATIVE MAINTENANCE  
 CHIP & SEAL 2003  
 EXISTING POINT UNCOVERED  
 DATE 12-15-03

# O.D.O.T. DISTRICT 2 SURVEY OFFICE

PERSONNEL

REFERENCE NO. 76

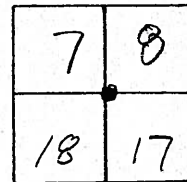
SHEET 7 OF 10

NOTES BARNHISEL Cuff  
 H.C. CORDES Jon  
 R.C. BARNHISEL Glen  
mm

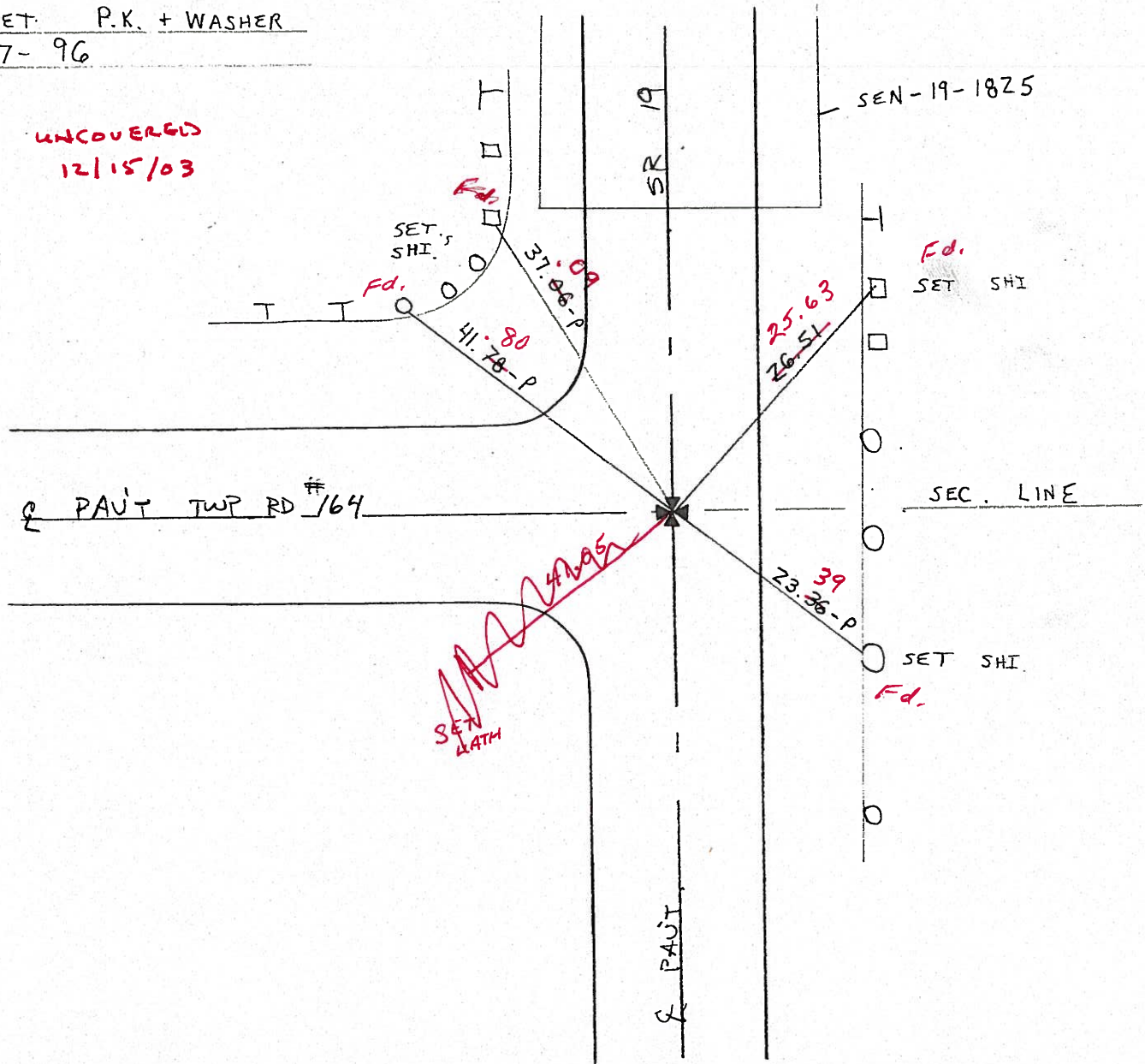
DATE 5/21/03  
~~9-4-96~~  
 WEATHER SUN  
 TEMP. +75° 50°

ROUTE 19  
 COUNTY SENECA  
 TOWNSHIP ADAMS  
 SECTION 7, 8, 17, 18  
T 3 N R 16 E

TYPE MONUMENT Mon Box  
 ON SURFACE - ~~BELOW~~ ON SURFACE  
 LEFT - ~~PAV'T.~~ RIGHT 0.5' LT &  
12.3 TO RT EDGE PAVEMENT  
 S.L.M. 962 + 88



RESET P.K. + WASHER  
10-7-96



# O.D.O.T. DISTRICT 2 SURVEY OFFICE

PERSONNEL \_\_\_\_\_

REFERENCE NO. 76

SHEET 7 OF 10

NOTES BARNHISEL

H.C. CORDES

R.C. BARNHISEL

DATE 9-4-96

WEATHER SUN

TEMP. +75°

ROUTE 19

COUNTY SENECA

TOWNSHIP ADAMS

SECTION 7, 8, 17, 18

T 3 N R 16 E

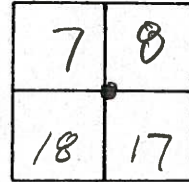
TYPE MONUMENT MON BOX

ON SURFACE - ~~BELOW~~ ON SURFACE

LEFT - ~~C~~ PAV'T. - RIGHT 0.5' LT &

12.3 TO RT EDGE PAVEMENT

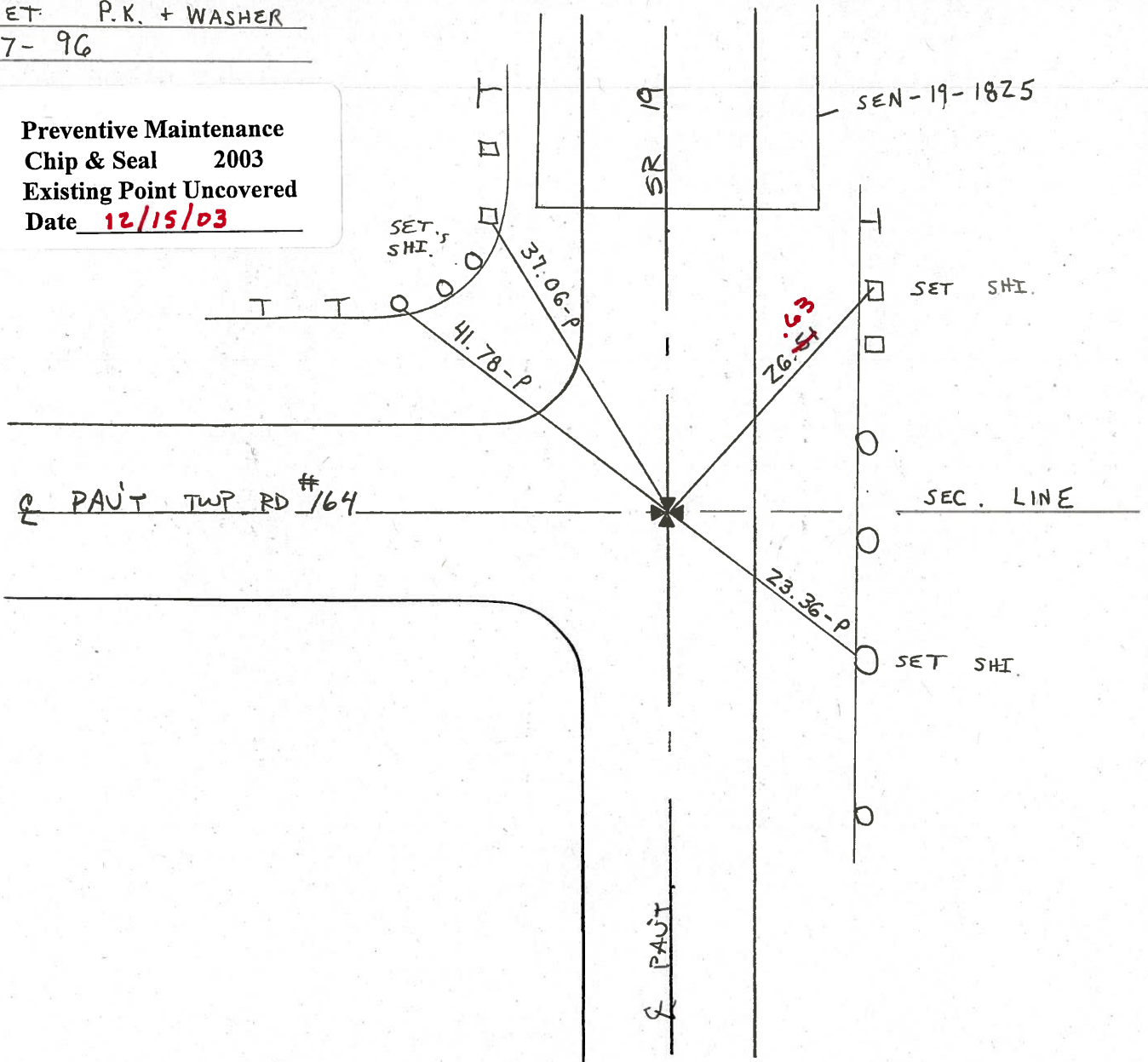
S.L.M. 96Z + 88



RESET P.K. + WASHER

10-7-96

Preventive Maintenance  
Chip & Seal 2003  
Existing Point Uncovered  
Date 12/15/03



O.D.O.T. DISTRICT 2 SURVEY OFFICE

39

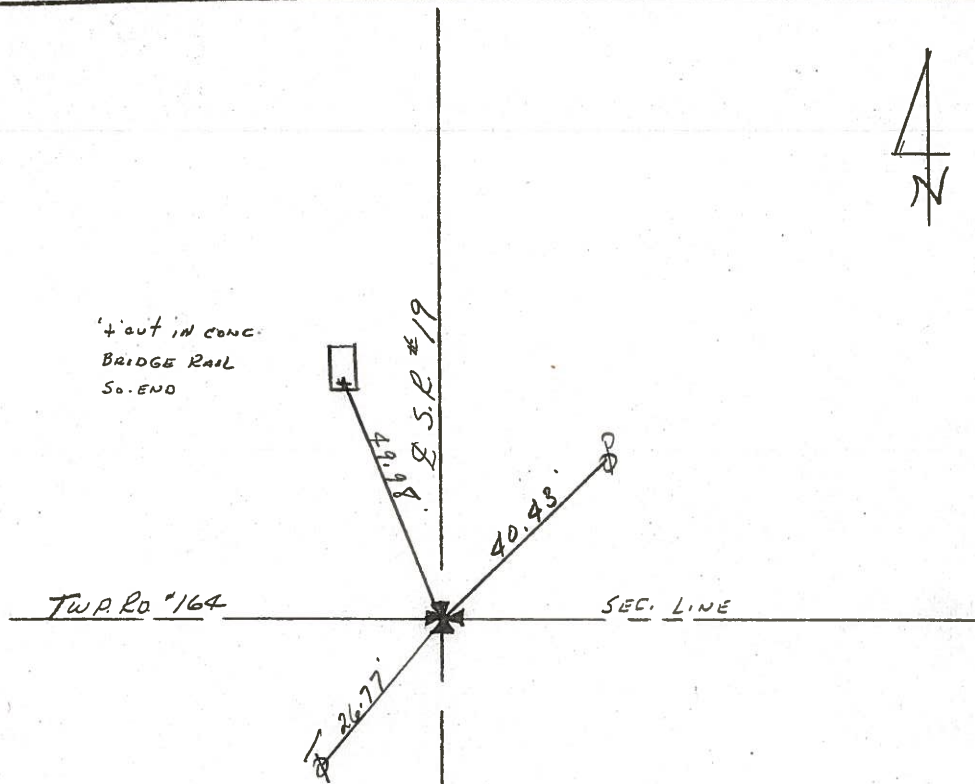
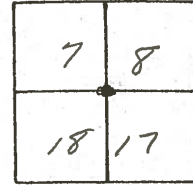
PERSONNEL

NOTES CROWN  
 H.C. RIPPLE  
 R.C. BARBOUR  
GEYMAN

REFERENCE NO. 76  
 DRAWN 9/10/85  
 DATE 9/9/85  
 WEATHER CLOUDY  
 TEMP. 80°

SHEET \_\_\_\_\_ OF \_\_\_\_\_  
 ROUTE #19  
 COUNTY SENECA  
 TOWNSHIP HOAMS  
 SECTION 7, 8, 17, 18  
 T 3 N R 16 E

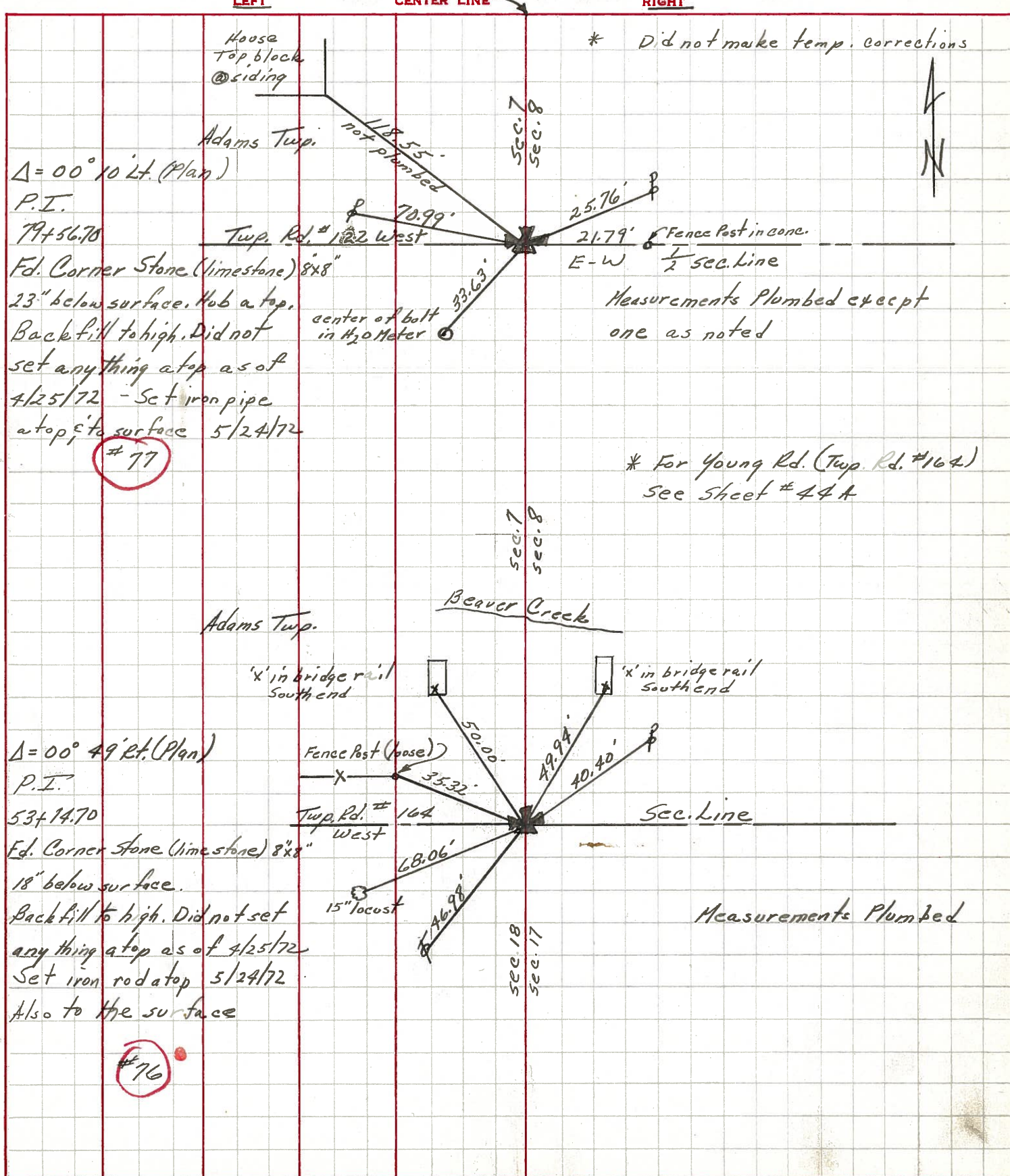
TYPE MONUMENT P.R. WASHER ATOP IRON ATOP  
 ON SURFACE - BELOW STONE  
 LEFT - Q PAV'T. - RIGHT R PAV'T.  
 TO \_\_\_\_\_ EDGE PAVEMENT  
 S.L.M. 18.2 ± 53+1470 Δ = 00°49' RT. PLAN





PERSONNEL	TITLE	PERSONNEL	TITLE	COUNTY	DATE
Ash				Seneca	4/25/72
Cronin				S. R. #19 (I.C.H. 515)	WEATHER sunny
Ripple				SEC. 'A'	TEMP. 56°
Anderson		Vinson			

DESCRIPTION Ties for Control Points JOB NO. \_\_\_\_\_



$\Delta = 00^\circ 10' \text{ Lt. (Plan)}$   
 P.I.  
 79+56.70  
 Fd. Corner Stone (limestone) 8x8"  
 23" below surface. Hub at top.  
 Back fill to high. Did not set anything at top as of 4/25/72 - Set iron pipe at top, & to surface 5/24/72

#77

$\Delta = 00^\circ 49' \text{ Rt. (Plan)}$   
 P.I.  
 53+14.70  
 Fd. Corner Stone (limestone) 8x8"  
 18" below surface.  
 Back fill to high. Did not set anything at top as of 4/25/72  
 Set iron rod at top 5/24/72  
 Also to the surface

#76

\* Did not make temp. corrections

\* For Young Rd. (Twp. Rd. #164) see sheet #44A

Measurements Plumbed