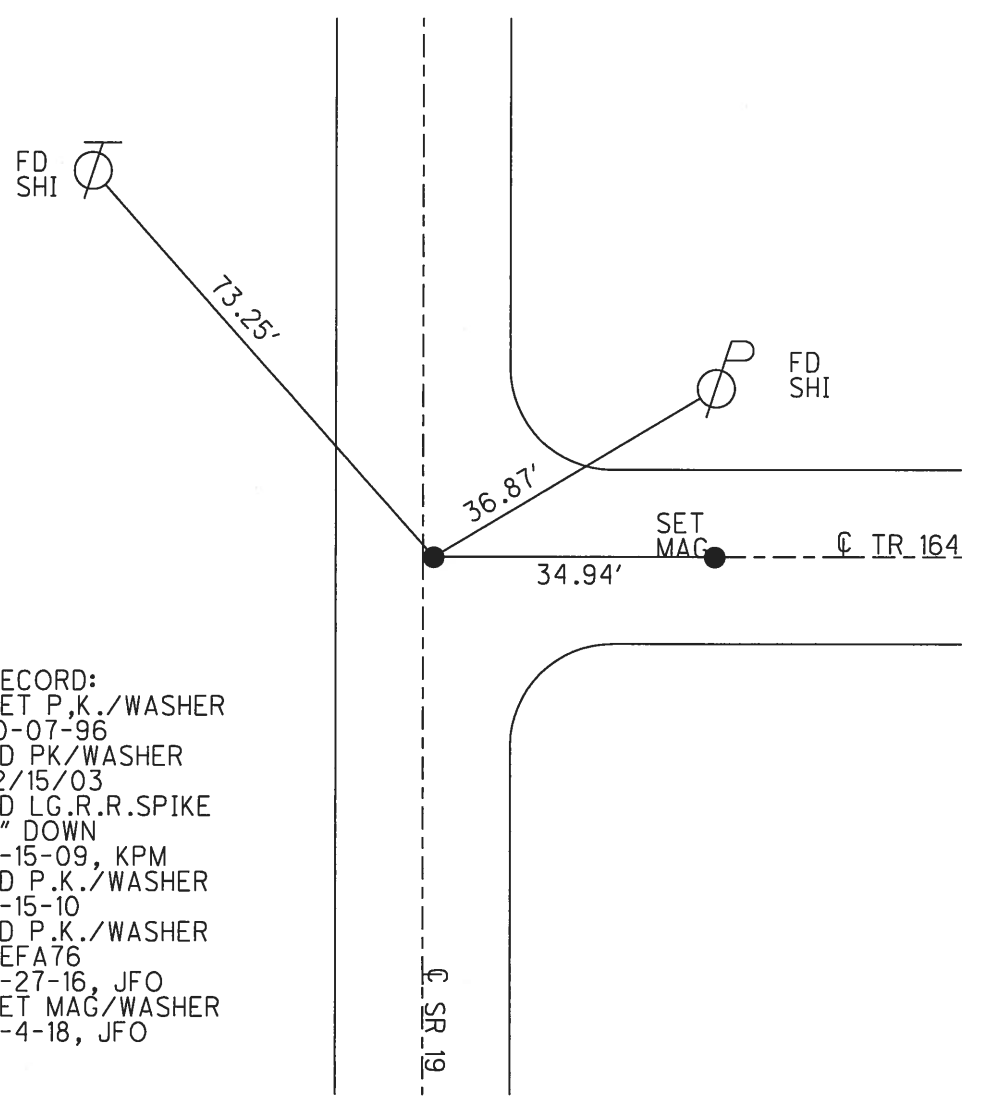
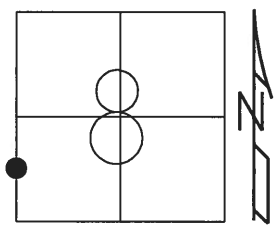


O.D.O.T. DISTRICT 2 SURVEY OFFICE (USE ONLY)

PERSONNEL	REFERENCE NO.	76 A	SHEET	22	OF	27
NOTES	RHOADES	DATE	6-4-18	ROUTE	SR 19	
H.C.	O'DONNELL	WEATHER	CLOUDY	COUNTY	SENECA	
R.C.	TRENKA	TEMP.	64°	TOWNSHIP	ADAMS	
				SECTION	8	
				T	3	N
				R	16	E

TYPE MONUMENT MAG/WASHER
 ON SURFACE - ~~BELOW~~ ON
~~LEFT~~ - CL PAV'T - RIGHT 0.9'
10.9' TO LT EDGE PAVEMENT
 S.L.M. 971+53.73
 GRID: NORTHING: 570203.102 EASTING: 1816012.365



RECORD:
 SET P.K./WASHER
 10-07-96
 FD PK/WASHER
 12/15/03
 FD LG.R.R.SPIKE
 3" DOWN
 7-15-09, KPM
 FD P.K./WASHER
 7-15-10
 FD P.K./WASHER
 REFA76
 6-27-16, JFO
 SET MAG/WASHER
 6-4-18, JFO

O.D.O.T. DISTRICT 2 SURVEY OFFICE (USE ONLY)

PERSONNEL

REFERENCE NO. 76-A

SHEET 22 OF 24

NOTES MOSER

DATE 07-15-09

ROUTE SR 19

H.C. BARNHISEL

WEATHER SUN

COUNTY SENECA

R.C. MOSER

TEMP. 75°

TOWNSHIP ADAMS

SECTION 8

T 3 N R 16 E

TYPE MONUMENT LG. R.R. SPK.

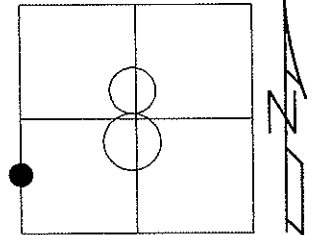
ON SURFACE - BELOW 3"

LEFT - Q PAV'T - RIGHT 0.9'

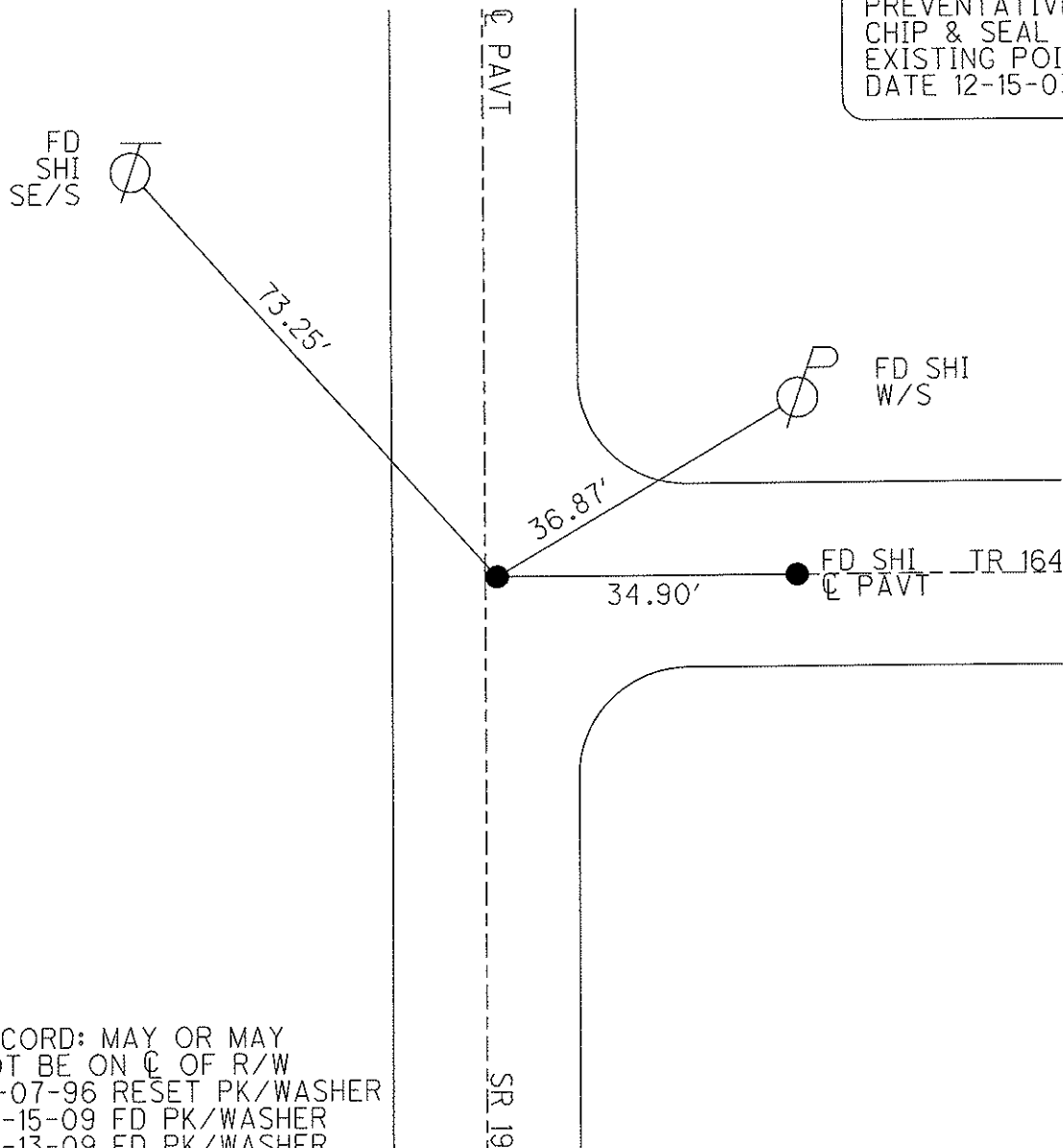
10.9' TO LT EDGE PAVEMENT

S.L.M. 972+61

Grid: Northing: _____ Easting: _____



PREVENTATIVE MAINTENANCE
CHIP & SEAL 2003
EXISTING POINT UNCOVERED
DATE 12-15-03



RECORD: MAY OR MAY
NOT BE ON Q OF R/W
10-07-96 RESET PK/WASHER
07-15-09 FD PK/WASHER
07-13-09 FD PK/WASHER

O.D.O.T. DISTRICT 2 SURVEY OFFICE

PERSONNEL

REFERENCE NO. 76 A

SHEET 8 OF 10

NOTES BARNHISEL Cuff

5/21/03

H.C. CORDES Jon

DATE 9-4-96

ROUTE #19

R.C. BARNHISEL Glen

WEATHER SUN

COUNTY SENECA

mm

TEMP. +75° 50°

TOWNSHIP ADAMS

SECTION 8

T 3 N R 16 E

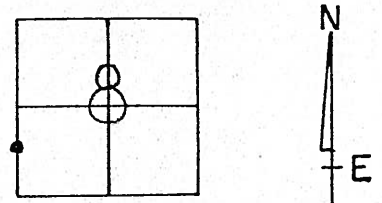
TYPE MONUMENT L6 RR. SPK.

ON SURFACE - BELOW 3" DOWN

LEFT - & PAV'T. - RIGHT 0.9' RT &

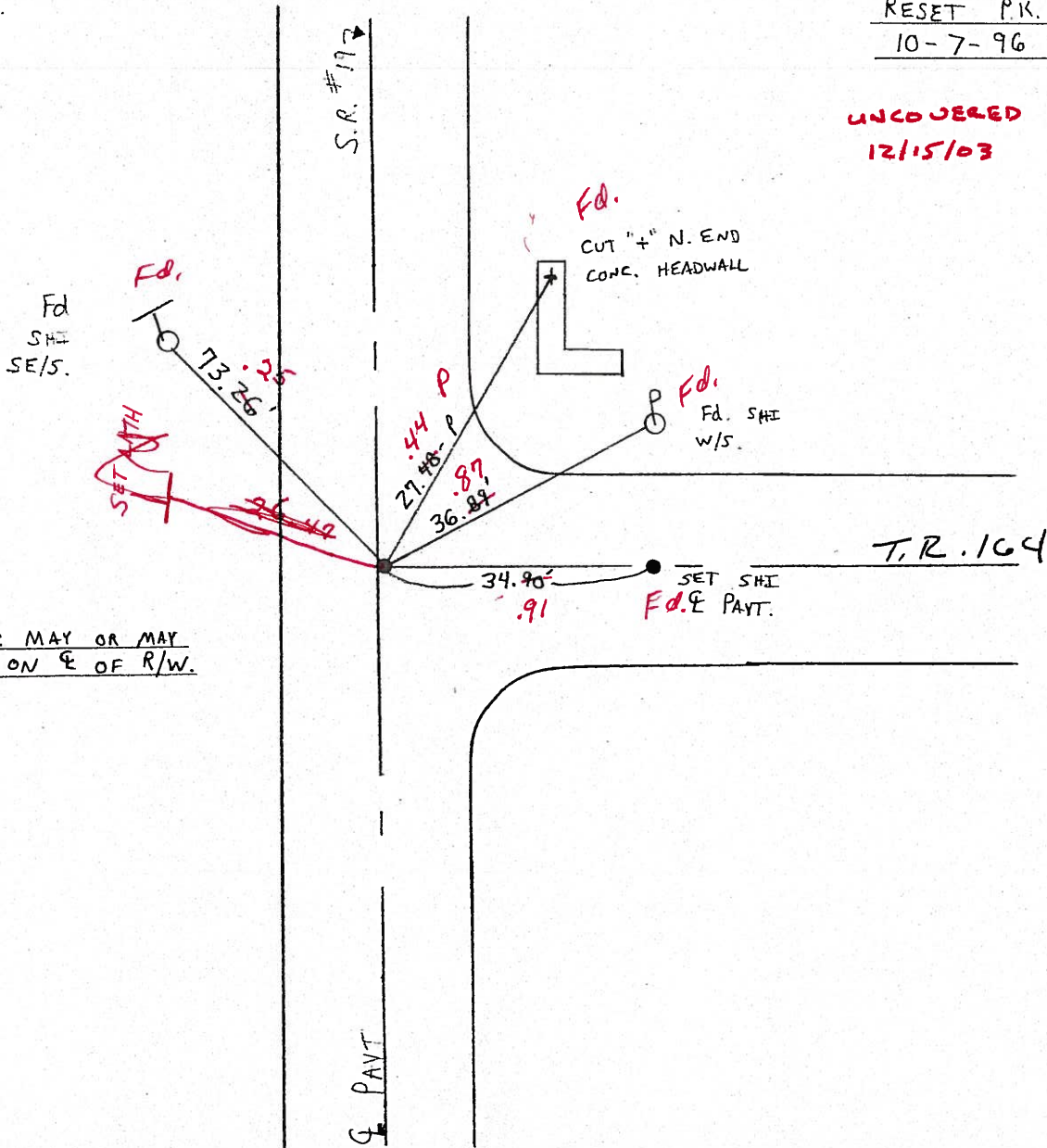
10.9 TO LT EDGE PAVEMENT

S.L.M. 972 +61



RESET P.K. + WASHER
10-7-96 B.W.C.

UNCOVERED
12/15/03



RECORD: MAY OR MAY
NOT BE ON & OF R/W.

O.D.O.T. DISTRICT 2 SURVEY OFFICE

PERSONNEL _____

REFERENCE NO. 76 A

SHEET 8 OF 10

NOTES BARNHISEL

H.C. CORDES

R.C. BARNHISEL

DATE 9-4-96

WEATHER SUN

TEMP. +75°

ROUTE #19

COUNTY SENECA

TOWNSHIP ADAMS

SECTION 8

T 3 N R 16 E

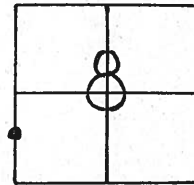
TYPE MONUMENT L6 RR. SPK.

ON SURFACE - BELOW 3" Down

~~LEFT~~ - & PAV'T. - RIGHT 0.9' RT &

10.9 TO LT EDGE PAVEMENT

S.L.M. 972 + 61



RESET P.K. + WASHER
10-7-96 B.W.C.

Preventive Maintenance
Chip & Seal 2003
Existing Point Uncovered
Date 12/15/03

Fd
SHE
SE/S.

TO 73.26'

S.R. #19

CUT "+" N. END
CONC. HEADWALL

27.48-P

36.89'

Fd. SHE
W/S.

34.90'

SET SHE
& PAVT.

T.R. 164

RECORD: MAY OR MAY
NOT BE ON & OF R/W.

& PAVT

O.D.O.T. DISTRICT 2 SURVEY OFFICE (25)

PERSONNEL

REFERENCE NO. 76A

SHEET _____ OF _____

NOTES CRONIN

DRAWN 9/10/85

H.C. RIPLLE

DATE 9/9/85

ROUTE 419

R.C. BARBOUR

WEATHER CLOUDY

COUNTY SENECA

GEYMAN

TEMP. 80°

TOWNSHIP ADAMS

SECTION 8

T 3 N R 16 E

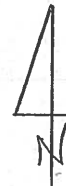
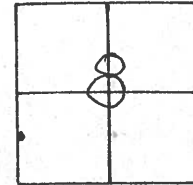
TYPE MONUMENT P.K. WASHER AND RR SPIKE

ON SURFACE - BELOW ON SURFACE

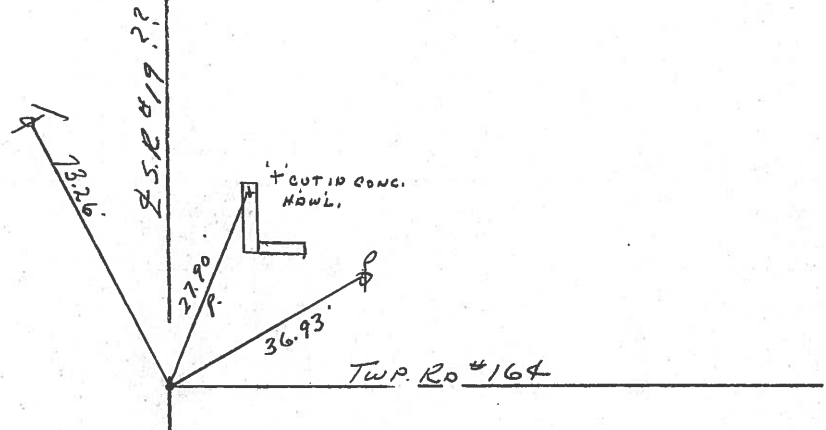
LEFT - 0 PAV'T. - RIGHT 1.5' RT. E PAV'T.

TO EDGE PAVEMENT

S.L.M. 18.75'



MAY OR MAY NOT BE ON
E OF R/W



PERSONNEL	TITLE	PERSONNEL	TITLE
<u>Ash</u>			
<u>Gronin</u>			
<u>Ripple</u>			
<u>Anderson</u>			

COUNTY Seneca DATE 10/11/72

S. R. #19 (I.C.H 515) WEATHER overcast

SEC. A TEMP. 54°

DESCRIPTION Ties for Control Points - Republic - North JOB NO. _____

LEFT

CENTER LINE

RIGHT



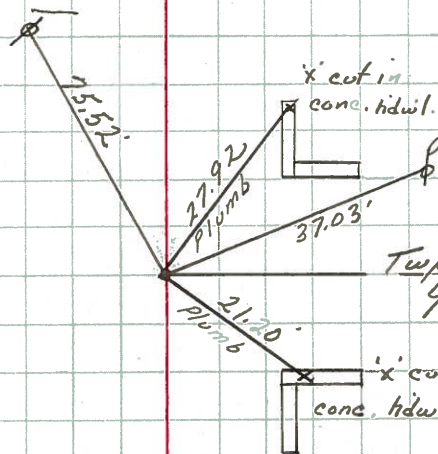
Adams Twp.

Did not make temp. corrections

Ed. R.R. spike 2" down
 Originally had found
 nail & shiner. Set
 P.K. Nail & shiner atop
 R.R. spike

May or may not be on section line

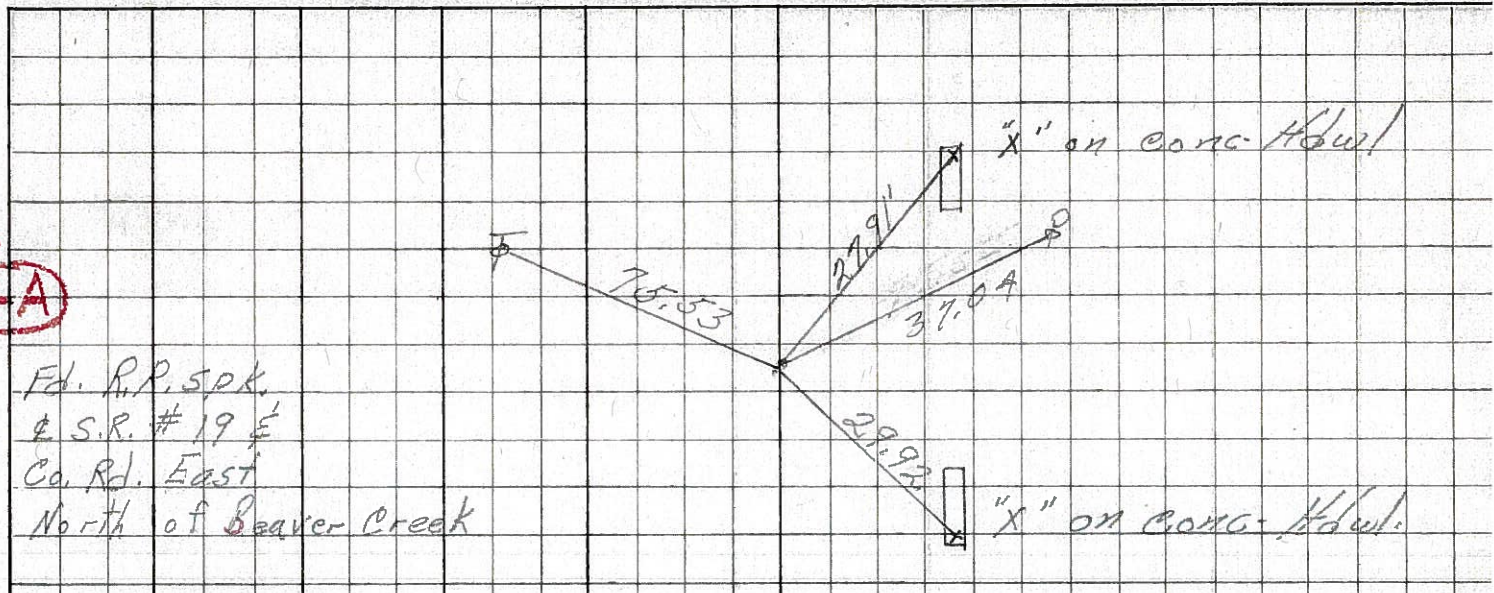
#76 A



PERSONNEL	TITLE	PERSONNEL	TITLE	COUNTY	DATE	WEATHER	TEMP.
Schneider				Seneca	8-7-69	Fair	75°
Mosser				S. R. 19			
Barbour				SEC. Republic - North			
Potts							

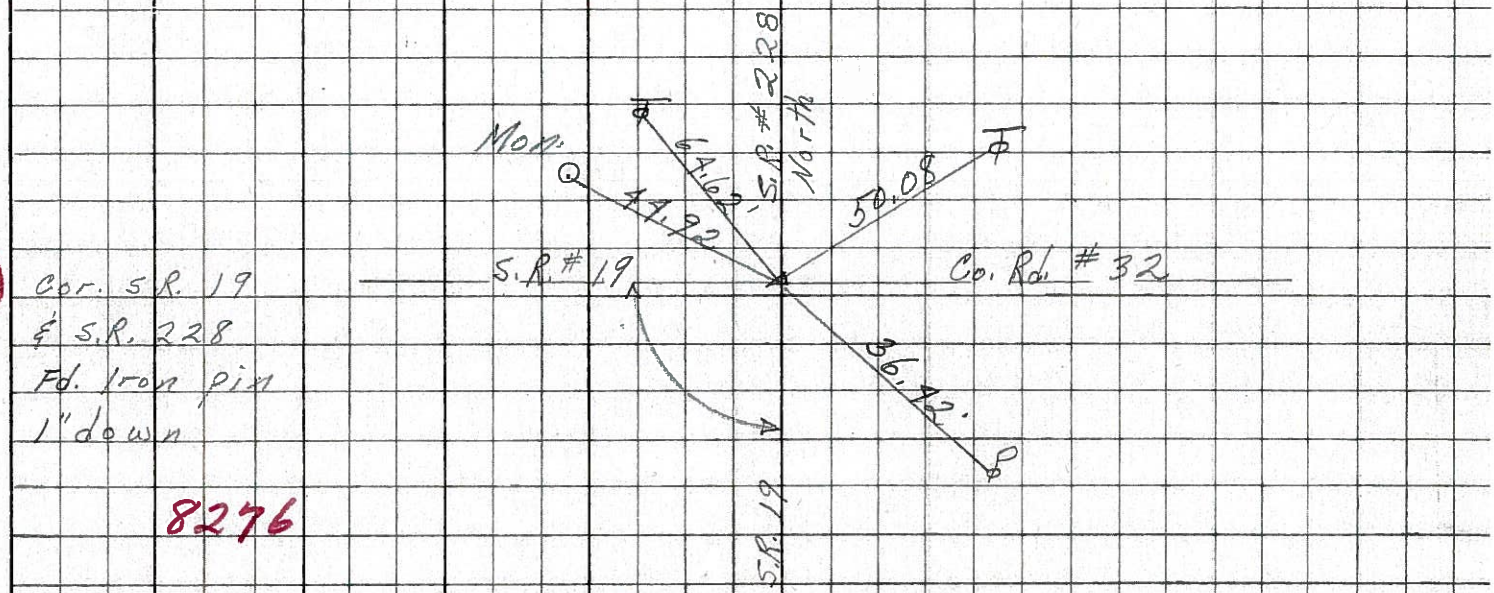
DESCRIPTION Ties for Control Points JOB NO. _____

76-A



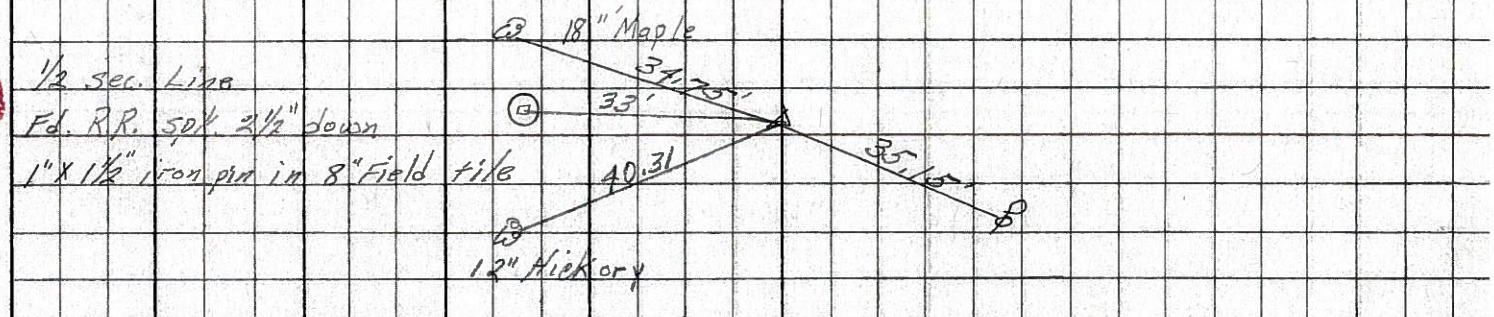
8277

69



8276

68



8275