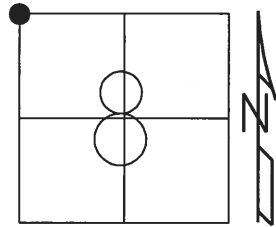


O.D.O.T. DISTRICT 2 SURVEY OFFICE (USE ONLY)

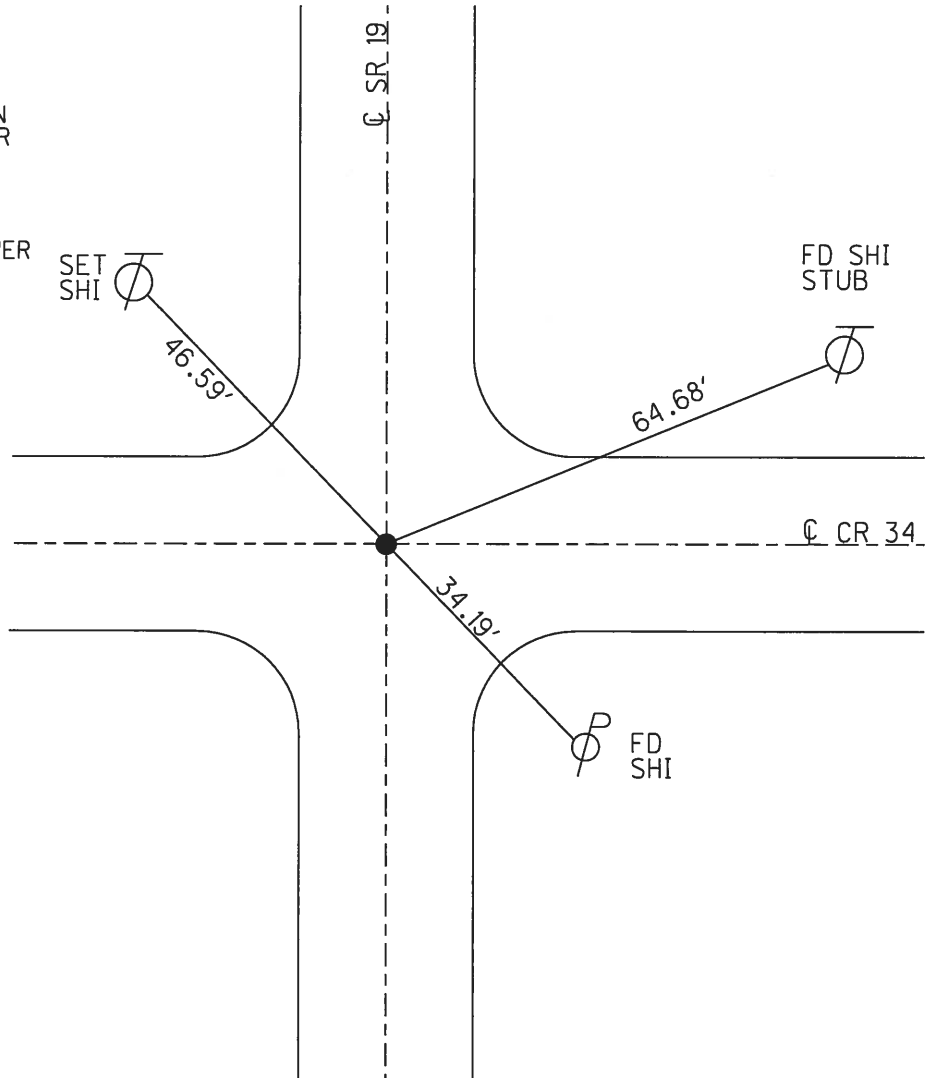
PERSONNEL \_\_\_\_\_ REFERENCE NO. 78 SHEET 24 OF 27  
 NOTES RHOADES DATE 6-4-18 ROUTE SR 19  
 H.C. O'DONNELL WEATHER CLOUDY COUNTY SENECA  
 R.C. TRENKA TEMP. 64° TOWNSHIP ADAMS  
 \_\_\_\_\_ SECTION 8  
 \_\_\_\_\_ T 3 N R 16 E

TYPE MONUMENT LG.R.R.SPIKE  
~~ON SURFACE~~ - BELOW 5"  
~~LEFT - C~~ PAV'T - ~~RIGHT~~ ON  
9.2' TO LT EDGE PAVEMENT  
 S.L.M. 1014+97.58



GRID: NORTHING: 574546.814 EASTING: 1816055.775

RECORD:  
 FD IPIN  
 2" DOWN  
 SET NAIL/SHI  
 10/11/72, CRONIN  
 SET P.K./WASHER  
 10-07-96  
 FD P.K./WASHER  
 12/15/03  
 FD LG.R.R.SPIKE  
 ATOP P.K./WASHER  
 7-15-09, MB  
 7-15-10  
 FD P.K./WASHER  
 REF 78  
 6-27-16, JFO  
 FD LG.R.R.SPIKE  
 5" DOWN  
 NEWREF 78  
 6-4-18, JFO



O.D.O.T. DISTRICT 2 SURVEY OFFICE (USE ONLY)

PERSONNEL

REFERENCE NO. 78

SHEET 24 OF 24

NOTES MOSER

DATE 07-15-09

ROUTE SR 19

H.C. BARNHISEL

WEATHER SUN

COUNTY SENECA

R.C. MOSER

TEMP. 75°

TOWNSHIP ADAMS

SECTION 8

T 3 N R 16 E

TYPE MONUMENT LG R.R. SPK. ATOP PK/WASHER

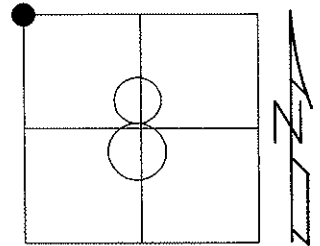
ON SURFACE - BELOW 3"

LEFT - ☉ PAV'T - RIGHT ON

9.2' TO LT EDGE PAVEMENT

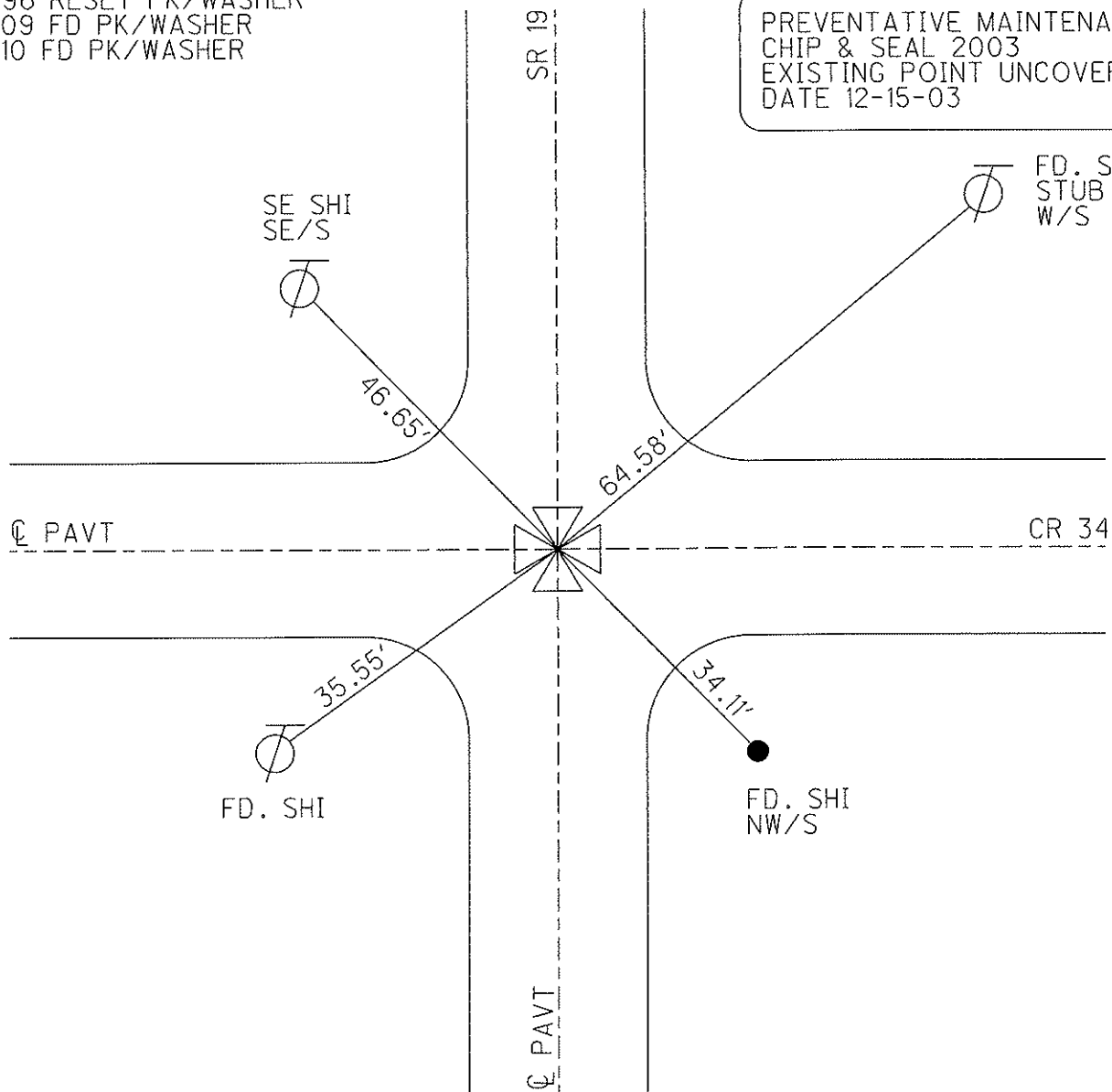
S.L.M. 1016+10

Grid: Northing: \_\_\_\_\_ Easting: \_\_\_\_\_



10-07-96 RESET PK/WASHER  
07-15-09 FD PK/WASHER  
07-15-10 FD PK/WASHER

PREVENTATIVE MAINTENANCE  
CHIP & SEAL 2003  
EXISTING POINT UNCOVERED  
DATE 12-15-03



# O.D.O.T. DISTRICT 2 SURVEY OFFICE

PERSONNEL

REFERENCE NO. 78

SHEET 10 OF 10

NOTES BARNHISEL Cuff

5/21/03

H.C. CORDES Jon

DATE 9-4-96

ROUTE # 19

R.C. BARNHISEL Blen

WEATHER SUN

COUNTY SENECA

mm

TEMP. +75° 50°

TOWNSHIP ADAMS

SECTION 5, 6, 7, 8

T. 3 N. R. 16 E.

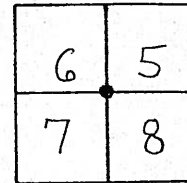
TYPE MONUMENT LG R.R. 5/8" ATOP P.K. + WASHER ATOP I ROD

ON SURFACE - BELOW 3" BELOW

LEFT - ☉ PAV'T. - RIGHT ON ☉ E & W

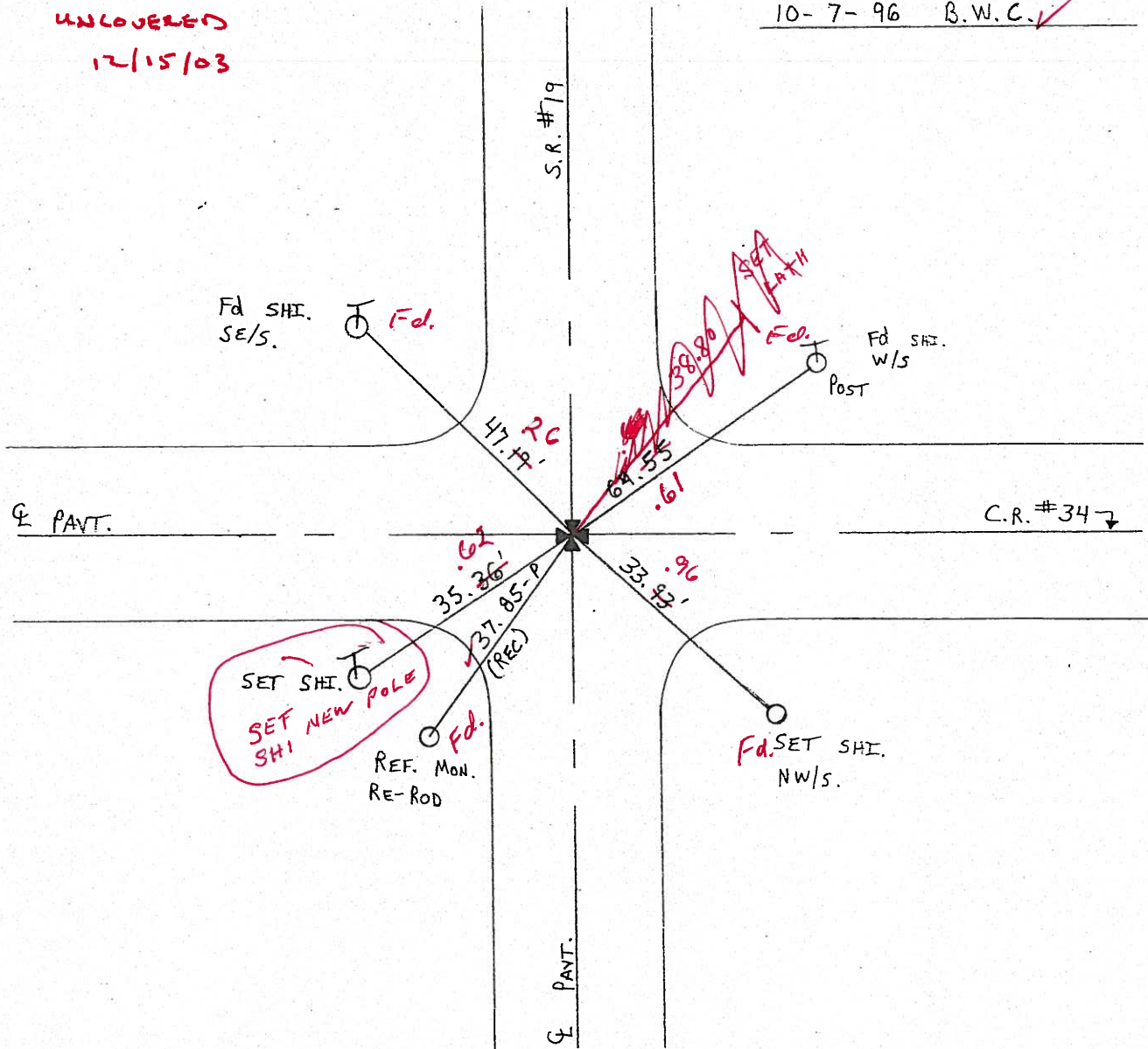
9.2 TO LT EDGE PAVEMENT

S.L.M. 1016 + 10



RESET P.K. + WASHER  
10-7-96 B.W.C. ✓

UNCOVERED  
12/15/03



# O.D.O.T. DISTRICT 2 SURVEY OFFICE

PERSONNEL

REFERENCE NO. 78

SHEET 10 OF 10

NOTES BARNHSEL

H.C. CORDES

R.C. BARNHSEL

DATE 9-4-96

WEATHER SUN

TEMP. +75°

ROUTE # 19

COUNTY SENECA

TOWNSHIP ADAMS

SECTION 5, 6, 7, 8

T 3 N R 16 E

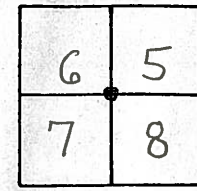
TYPE MONUMENT LG R.R. SPK. ATOP P.K. + WASHER ATOP IRON

~~ON SURFACE~~ - BELOW 3" BELOW

~~LEFT - & PAV'T. - RIGHT~~ ON & E&W

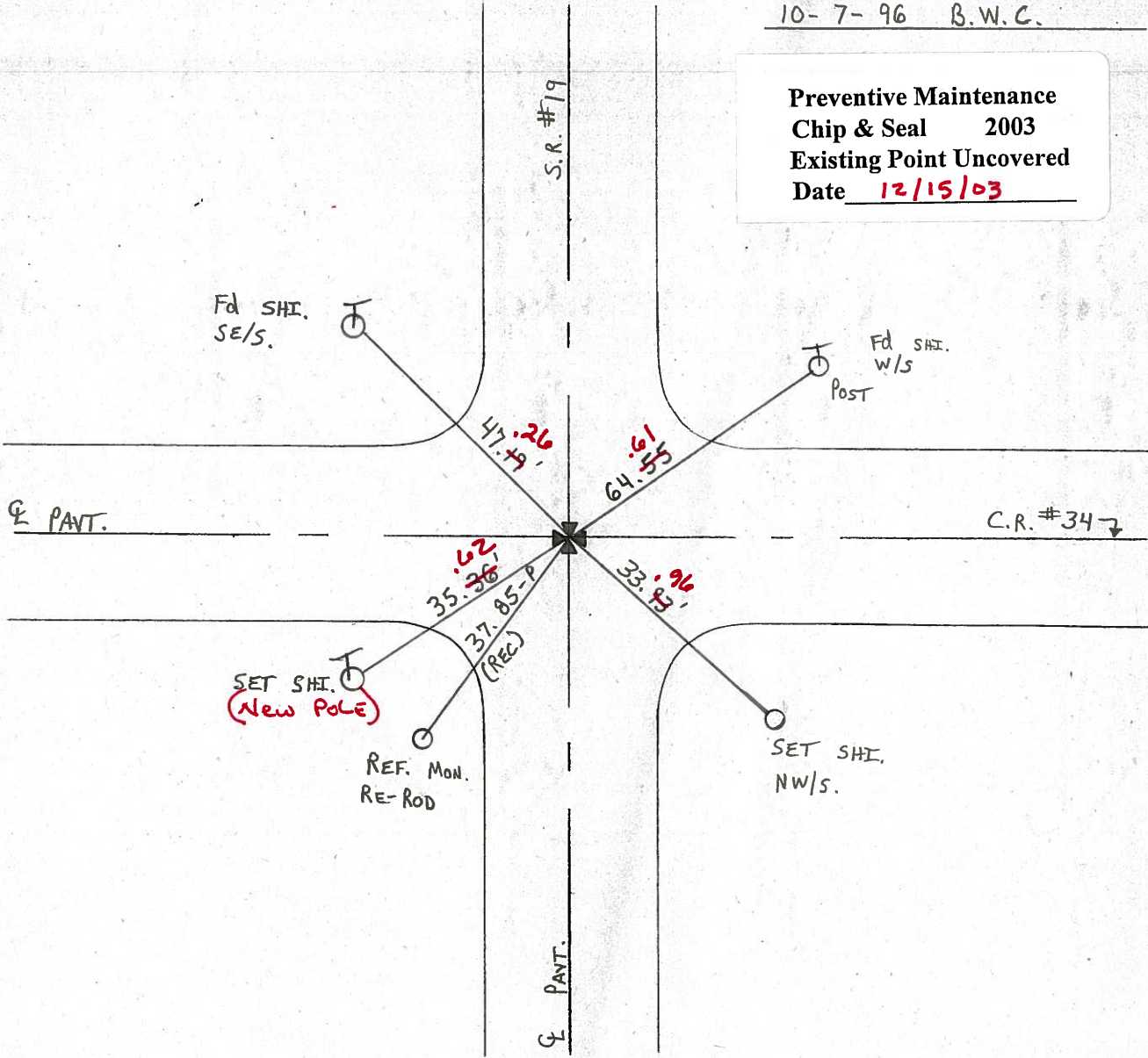
9.2 TO LT EDGE PAVEMENT

S.L.M. 1016 + 10



RESET P.K. + WASHER  
10-7-96 B.W.C.

**Preventive Maintenance**  
**Chip & Seal 2003**  
**Existing Point Uncovered**  
**Date 12/15/03**



O.D.O.T. DISTRICT 2 SURVEY OFFICE (37)

PERSONNEL

REFERENCE NO. 78

SHEET \_\_\_\_\_ OF \_\_\_\_\_

NOTES CROWN

DRAWN 9/10/85

H.C. RIPPLE

DATE 9/9/85

R.C. BARBOUR

WEATHER CLOUDY

GEYMAN

TEMP. 80°

ROUTE #19

COUNTY SENECA

TOWNSHIP ADAMS

SECTION 5, 6, 7, 8

T 3 N R 16 E

TYPE MONUMENT P.K. WASHER ATOP I. Rod

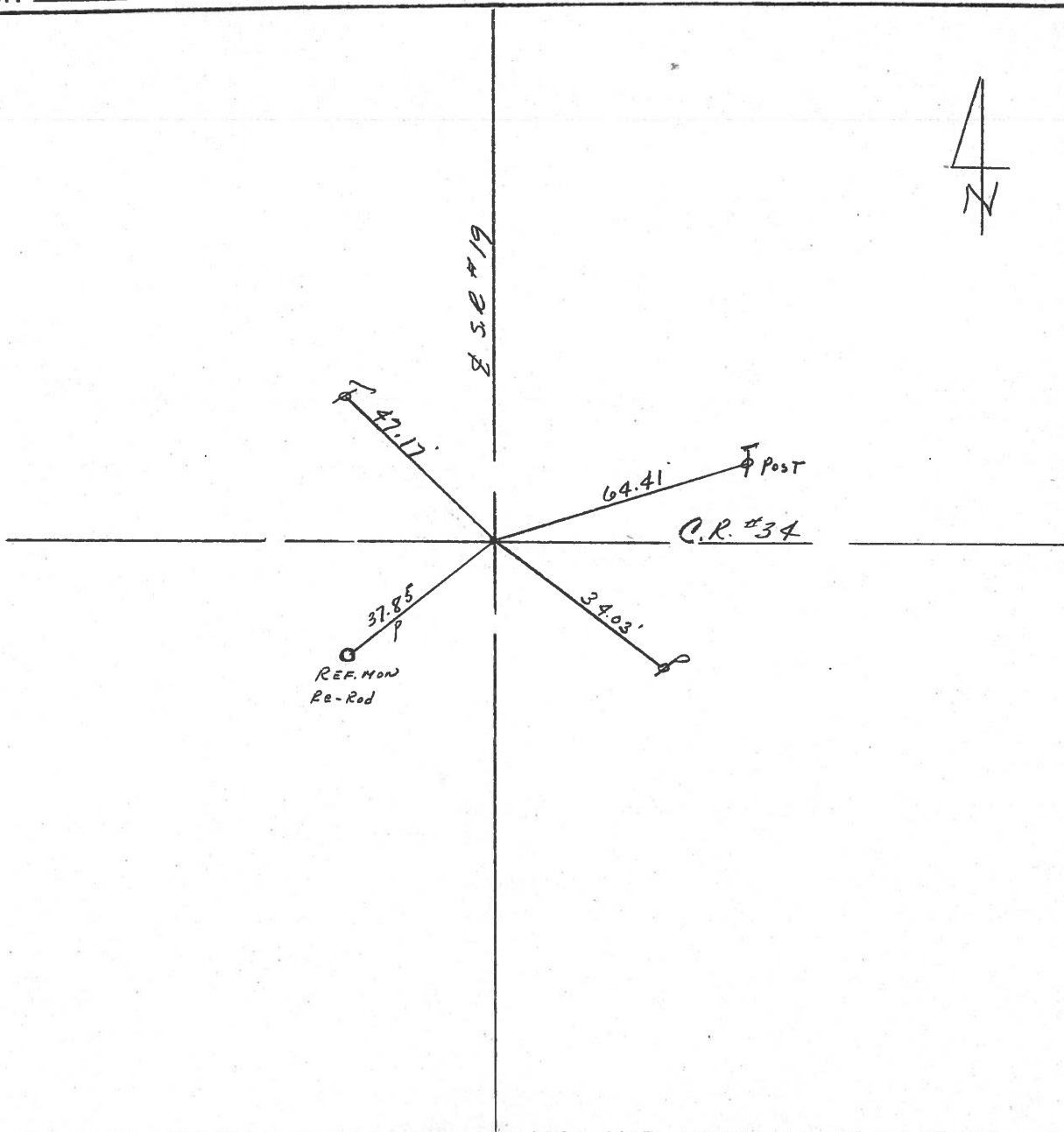
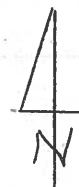
ON SURFACE - BELOW ON SURFACE

LEFT - ☉ PAV'T. - RIGHT ☉ PAUT.

TO EDGE PAVEMENT

S.L.M. 19.2'

6	5
7	8



PERSONNEL TITLE PERSONNEL TITLE

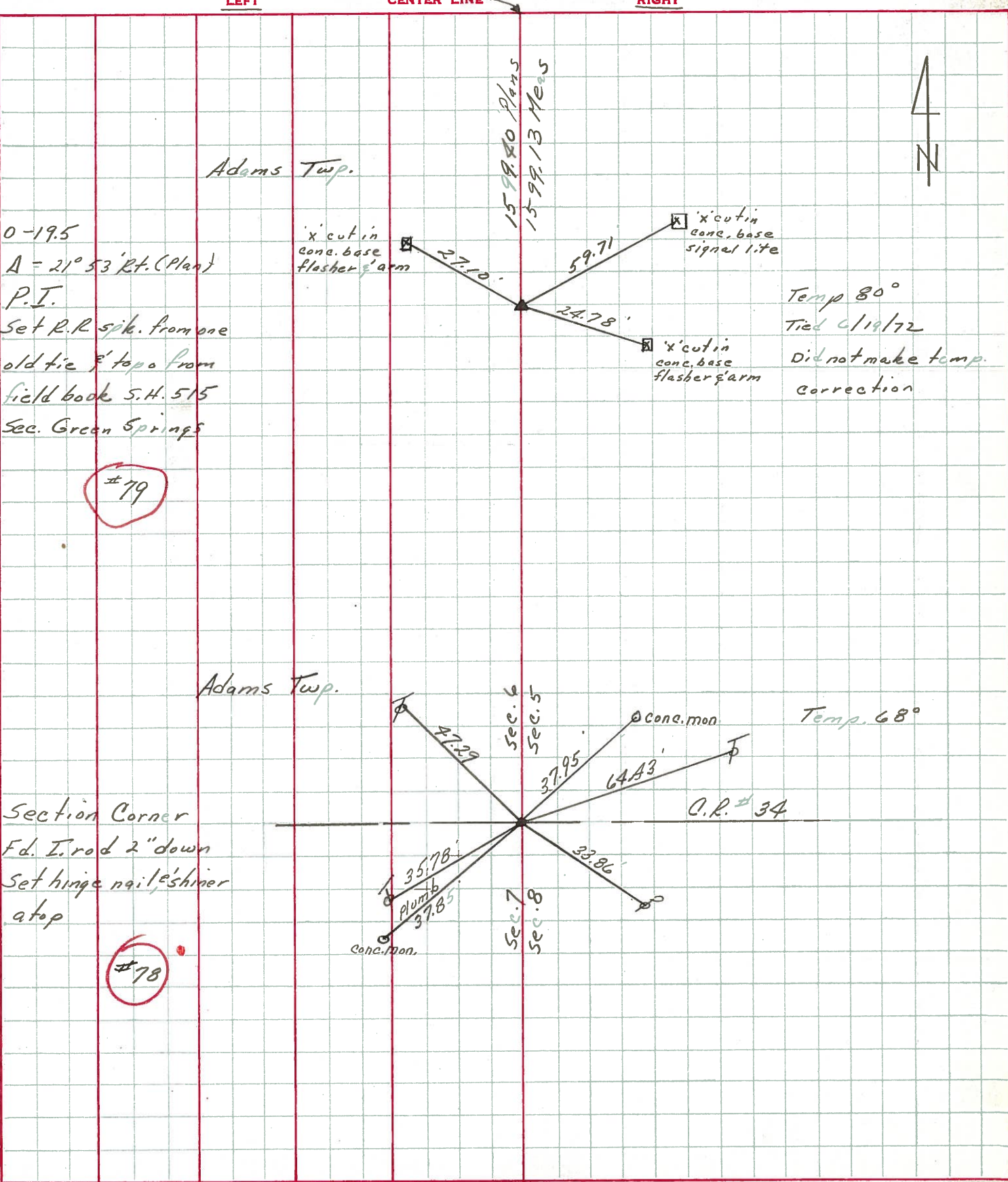
Ash  
Cronin  
Ripple  
Anderson

COUNTY Seneca DATE drawn 10/11/72

S. R. #19 (I.C.H. 515) WEATHER cloudy

SEC. TEMP. 68°

DESCRIPTION Ties for Control Points - Republic - North JOB NO.



PERSONNEL	TITLE	PERSONNEL	TITLE
Schneider			
Mosser			
Barbour			
Potts			

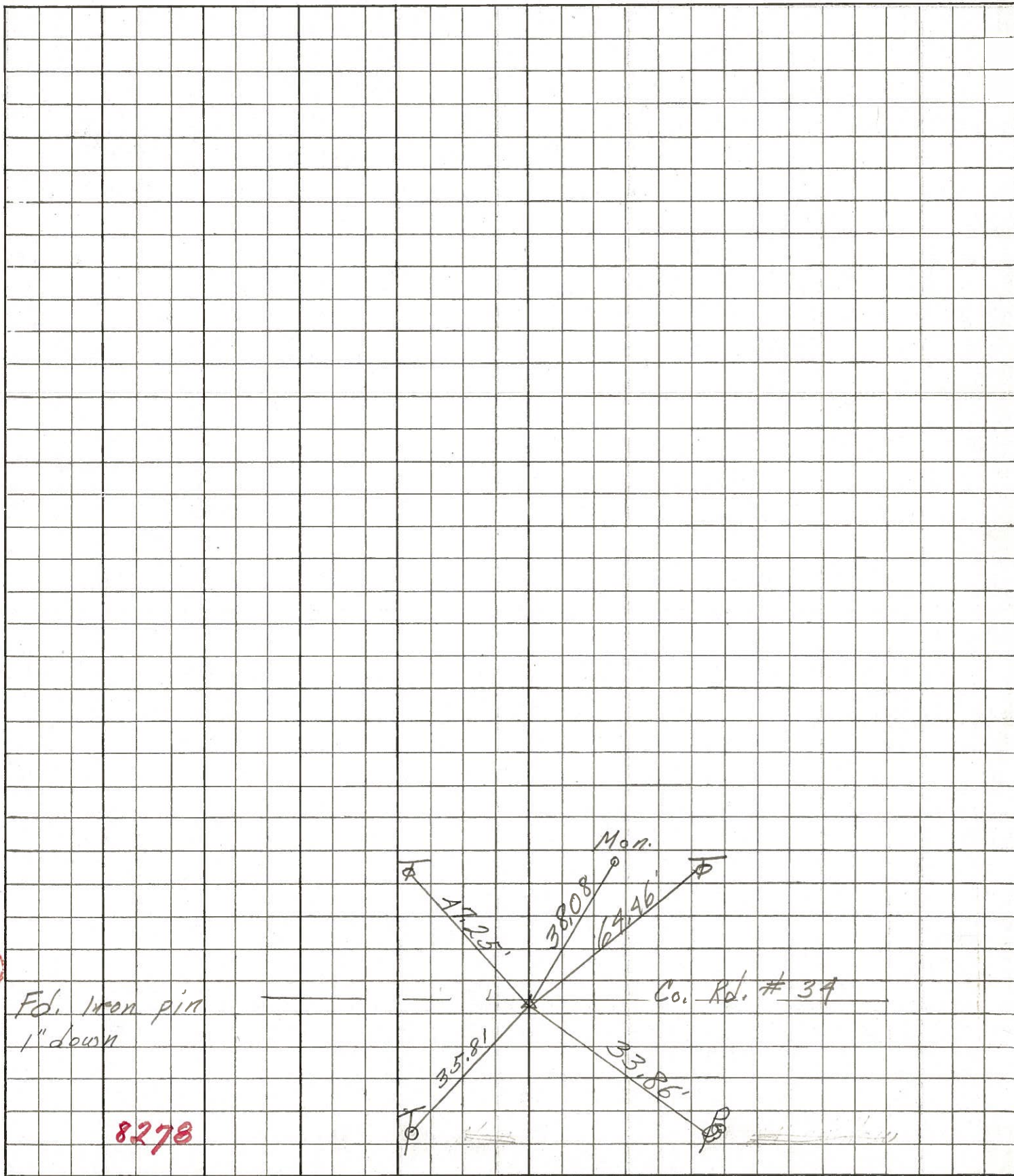
COUNTY Seneca DATE 8-11-69

S. R. 19 WEATHER Fair

SEC. Republic - North TEMP. 75°

DESCRIPTION Ties for Control Points JOB NO. \_\_\_\_\_

LEFT CENTER LINE RIGHT



78

Fd. Iron pin  
1" down

8278