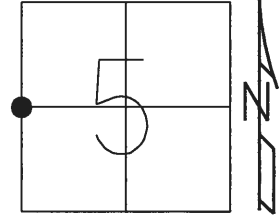


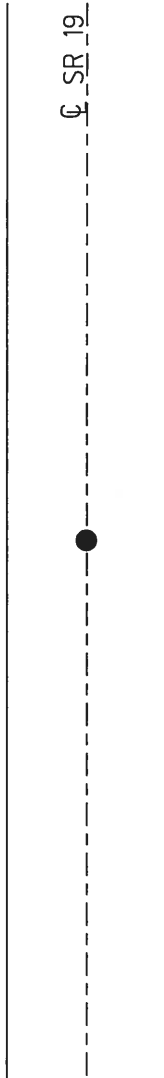
O.D.O.T. DISTRICT 2 SURVEY OFFICE (USE ONLY)

PERSONNEL \_\_\_\_\_ REFERENCE NO. 79 SHEET 25 OF 27  
NOTES CRONIN DATE 9-5-85 ROUTE SR 19  
H.C. RIPPLE WEATHER SUNNY COUNTY SENECA  
R.C. BARBOUR TEMP. 85° TOWNSHIP ADAMS  
GEYMAN SECTION 5  
T 3 N R 16 E

TYPE MONUMENT P.K./WASHER  
ON SURFACE - ~~BELOW~~ ON  
LEFT - Q PAV'T - ~~RIGHT~~ 2'  
- TO - EDGE PAVEMENT  
S.L.M. 1043+42  
GRID: NORTHING: - EASTING: -



RECORD: P.I.  
 $\Delta = 21^\circ 53'$  RT (PLAN)  
SET R.R.SPIKE  
10/11/72, CRONIN  
DNF  
6-27-16, JFO



O.D.O.T. DISTRICT 2 SURVEY OFFICE (38)

PERSONNEL

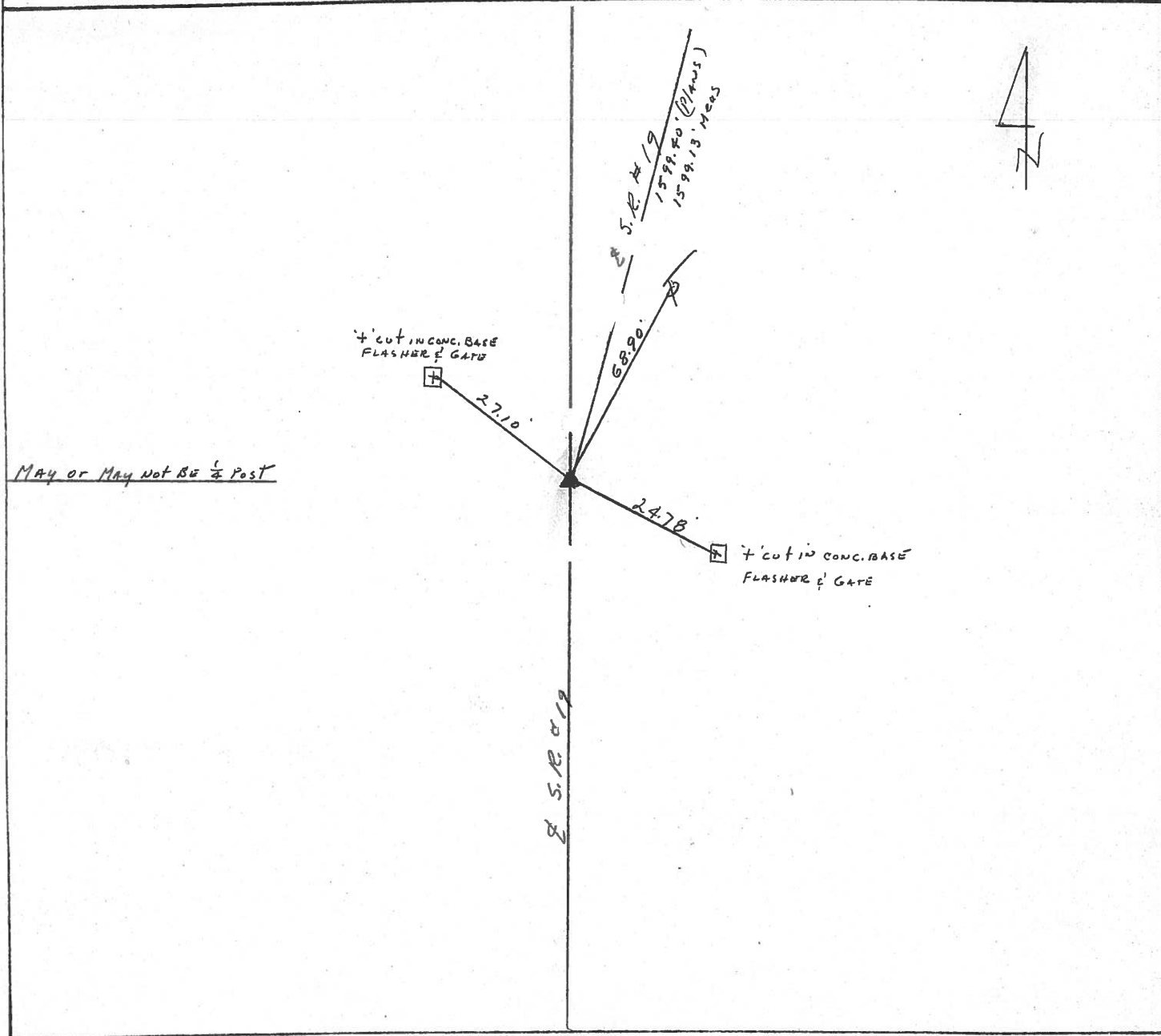
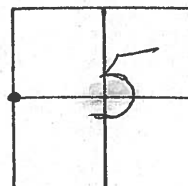
NOTES CRONIN  
 H.C. RIPPLE  
 R.C. BARBOUR  
GEYMAN

REFERENCE NO. 79  
 DRAWN 9/10/85  
 DATE 9/5/85  
 WEATHER SUNNY  
 TEMP. 85°

SHEET \_\_\_\_\_ OF \_\_\_\_\_

ROUTE #19  
 COUNTY SENECA  
 TOWNSHIP ADAMS  
 SECTION 5  
T3 N R 16 E

TYPE MONUMENT P.K. WASHER  
 ON SURFACE - BELOW ON SURFACE  
 LEFT - ☉ PAV'T. - RIGHT 2' LT. & PAUT.  
TO EDGE PAVEMENT  
 S.L.M. 19.7 E 0-19.5 Δ = 21° 53' Rt. (PLAN)



PERSONNEL TITLE PERSONNEL TITLE

COUNTY Seneca DATEDrawn 10/11/72

Ash  
Cronin  
Ripple  
Anderson

S. R. #19 (I.C.H. 515) WEATHER cloudy

SEC. TEMP. 68°

DESCRIPTION Ties for Control Points - Republic-North

JOB NO.

LEFT CENTER LINE RIGHT

