

#6000

FOR ANY QUESTIONS PLEASE CONTACT ODOT DISTRICT 2 REAL ESTATE AT 419-353-8131

STATE OF OHIO  
DEPARTMENT OF HIGHWAYS AND PUBLIC WORKS  
DIVISION OF HIGHWAYS  
BUREAU OF CONSTRUCTION

**FOSTORIA-CAREY ROAD**

I.C.H. NO. 268 SEC. J PET. NO. 4202

**SENECA COUNTY**  
**BIG SPRING TP. MARCH 1924**

• CONVENTIONAL SIGNS •

- State line
- County line
- Township line
- Section line
- Property line not fenced
- Center line
- City or Village line
- Fence
- Telephone or Telegraph
- Steam Railroad
- Electric line
- Hedge Fence
- Guard Rail

• INDEX •

- Title Page p. 1
- Typical Section p. 2
- Plans & Profile p. 3-6
- Cross Sections p. 7-13
- Structural Plans p. 14-16
- Summary Sheet p. 17

The Standard Specifications of the State of Ohio Division of Highways in force on date of contract will govern this improvement.

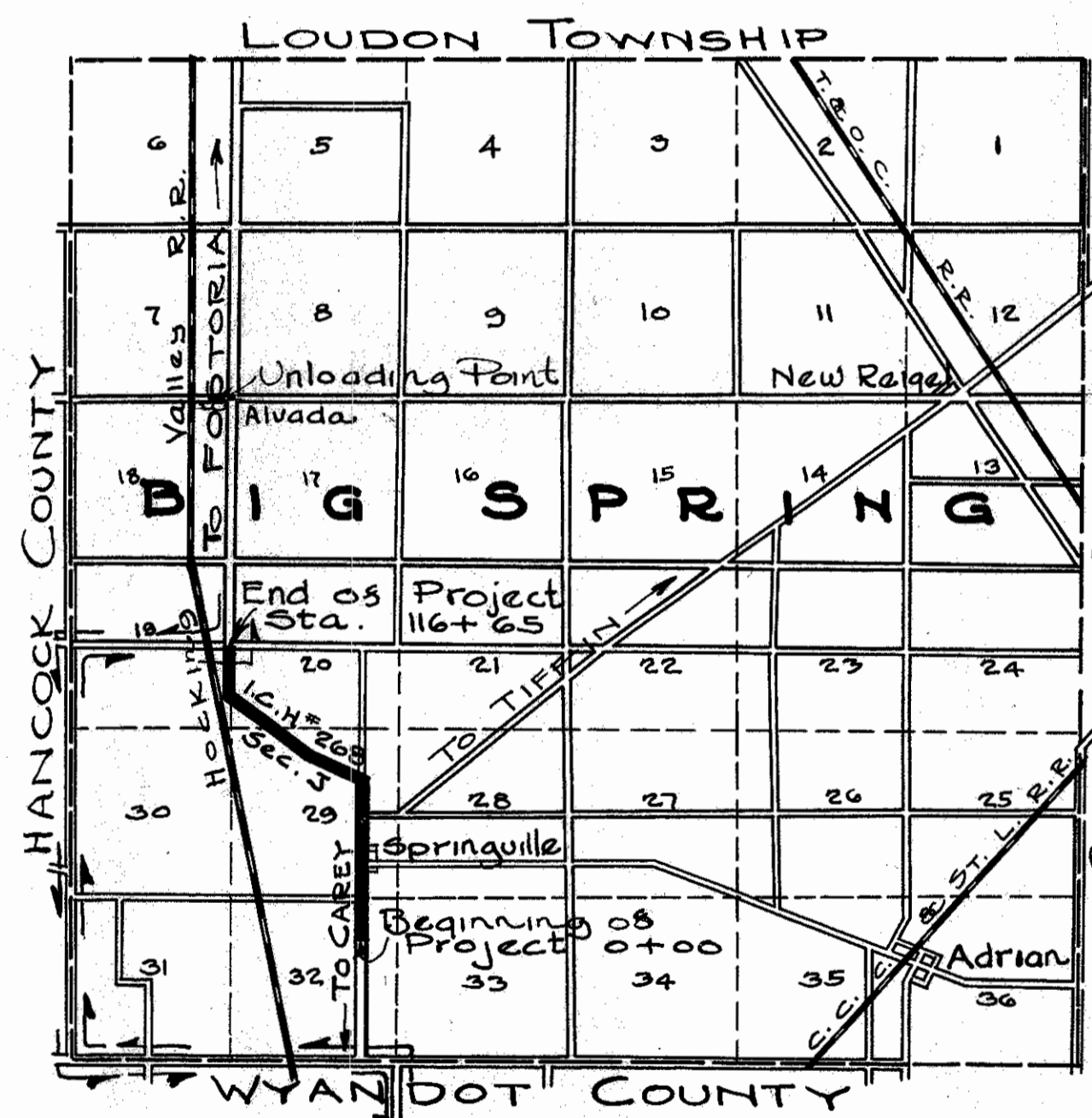
I hereby approve these plans and declare that the making of this improvement will require the closing to traffic of the highway and that detours will be provided as shown on the plan and estimates.

Approved: *H. J. Haker*  
Date, 4-26-1924 Resident Engineer

Approved: *M. J. Harker*  
Date, 4-2-24 Division Engineer

Approved: *G. F. Adlesinger*  
Date, 7-16-24 State Highway Engineer

Approved: *L. Boulay*  
Date, 7-24 Director of Highways and Public Works.



**LOCATION PLAN**

SCALE OF MILES  
0 1/2 1 2 3

PORTION TO BE IMPROVED   
DETOURS SHOWN THUS

• SCALES •

- Plan 1" = 100'
- Profile (Vertical) 1" = 10'
- Profile (Horizontal) 1" = 100'
- Cross Sections 1" = 5'

We the Commissioners of Seneca County hereby approve these plans and certify that the right-of-way 60 feet wide, is available for the construction maintenance and repair of the above highway

*F. W. Dushow*  
*C. L. Park*  
*W. A. Jordan*

Date, 4-26-24 County Commissioners.

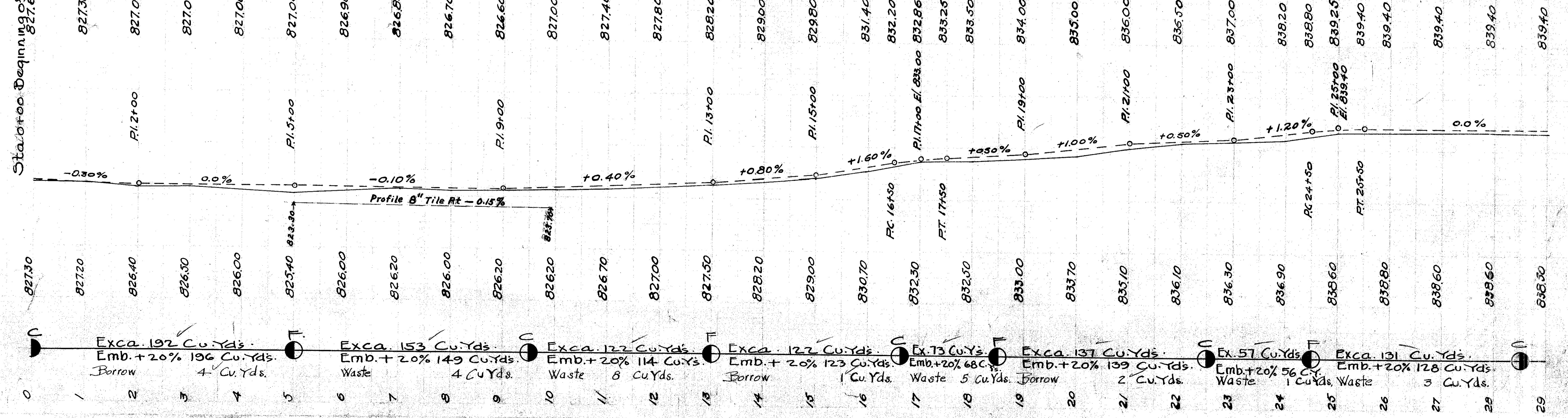




FOR ANY QUESTIONS PLEASE CONTACT ODOT DISTRICT 2 REAL ESTATE AT 419-363-8131

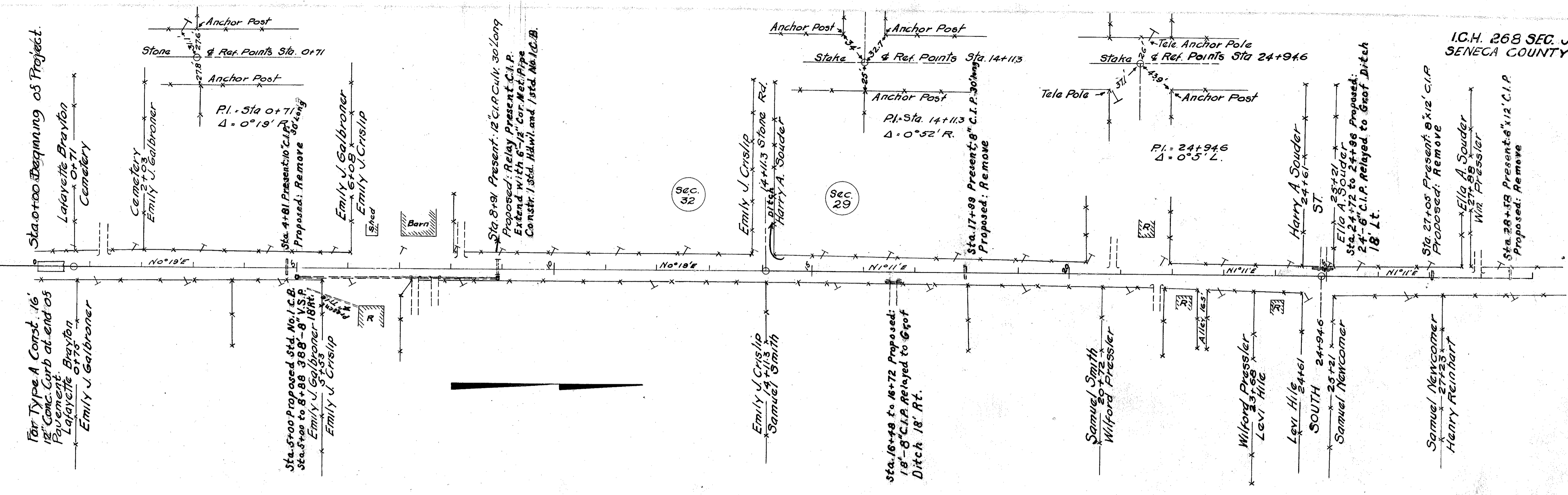
Sta. 0+00 Beginning of Project  
827.60

NOTE: Grade line shown is crown of finished pavement.

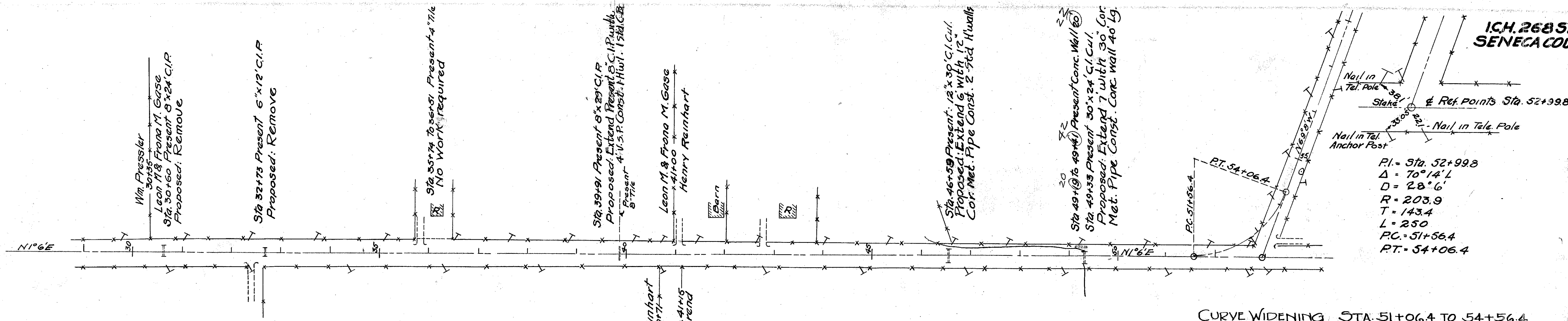


BM RR Spike in Wat  
nut Rt. Sta. 3+79  
Elev. 826.84

BM RR Spike in  
wild cherry Rt. 12+83  
Elev. 828.61







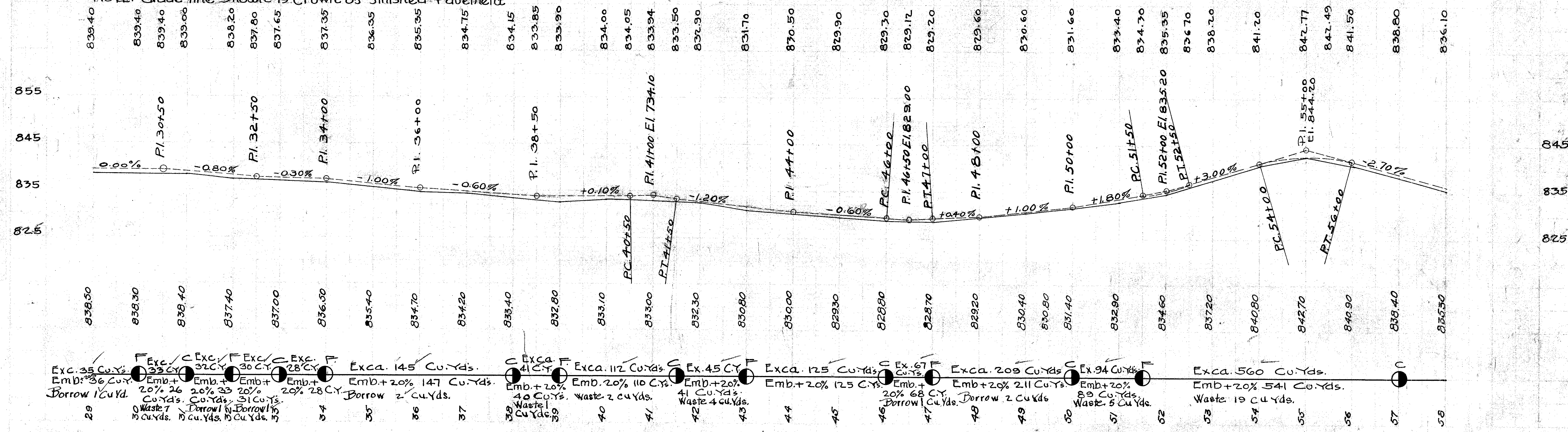
CURVE WIDENING STA. 51+06.4 TO 54+56.4  
Add 212 Sq. Yds. for Base & Top Course

LEFT	Width	Sta.	Profile Gr. Elev.	RIGHT	Edge of Pavement Elev.
833.33	9.0	51+06.4	833.52	9	833.33
833.78	10.5	51+31.4	833.87	9	834.20
834.23	13.33	51+56.4	834.42	9	835.07
834.74	15.85	51+81.4	834.93	9	836.00
835.32	17.00	52+06.4	835.51	9	837.00
835.97	17.00	52+31.4	836.16	9	837.65
836.70	17.00	52+56.4	836.89	9	838.38
837.45	17.00	52+81.4	837.64	9	839.13
838.20	17.00	53+06.4	838.39	9	839.88
838.95	17.00	53+31.4	839.14	9	840.63
839.70	17.00	53+56.4	839.89	9	841.38
840.45	15.85	53+81.4	840.64	9	841.71
841.19	13.33	54+06.4	841.38	9	842.03
841.81	10.5	54+31.4	842.00	9	842.23
842.23	9.0	54+56.4	842.44	9	842.44

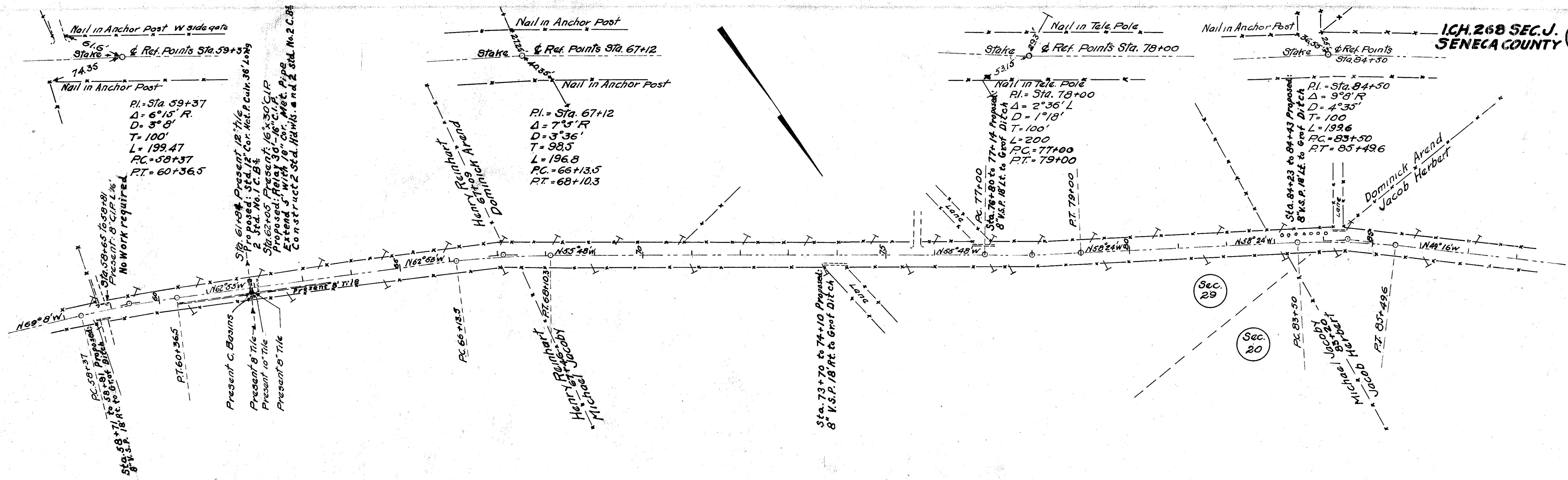
B.M. R.R. Spike in Wall  
at Rt. Sta. 32+66  
Elev. 839.88

B.M. R.R. Spike in Walnut  
Abt. 250' Rt. Sta. 50+59  
Elev. 832.96

NOTE: Grade line shown is Crown of Finished Pavement





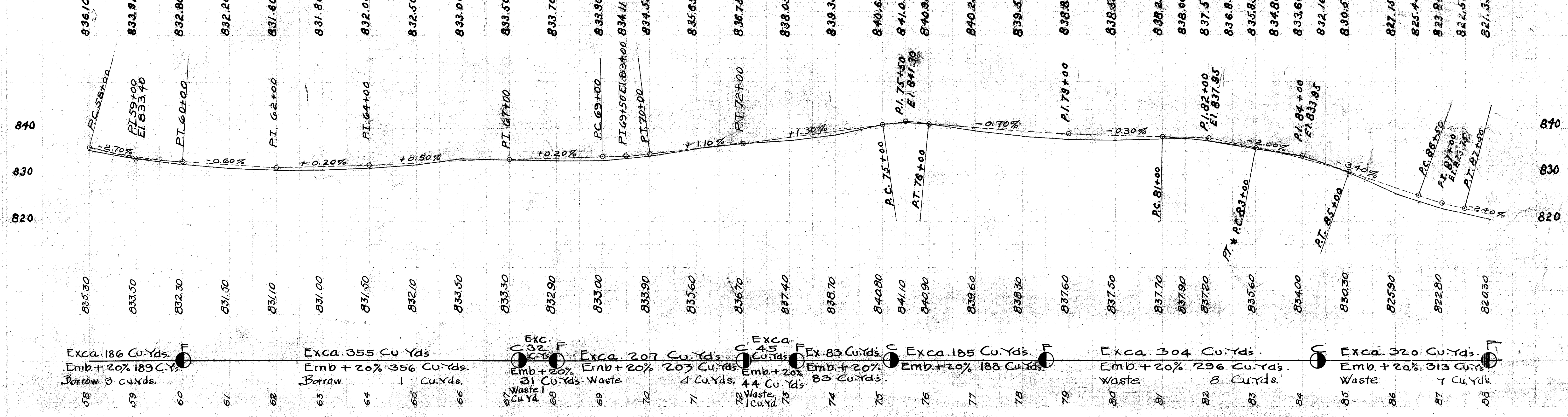


B.M. R.R. SPIKE in small  
 Ash Rt. Sta. 62+91  
 Elev. 831.45

B.M. R.R. SPIKE in Oak  
 Lt. Sta. 76+76  
 Elev. 842.61

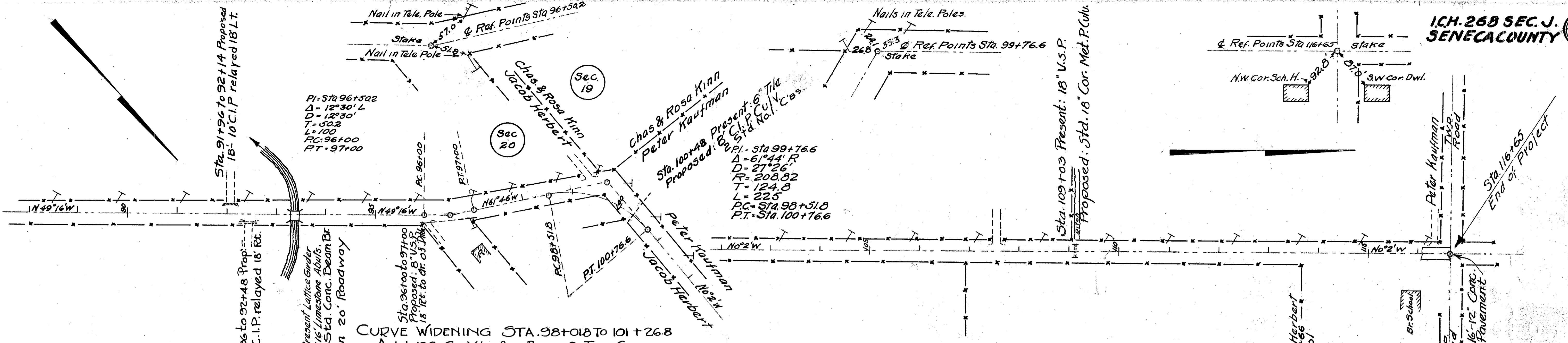
B.M. R.R. SPIKE in  
 Maple Lt. Sta. 84+42  
 Elev. 835.82

NOTE: Grade line shown is crown of finished pavement



FOR ANY QUESTIONS PLEASE CONTACT ODOT DISTRICT 2 REAL ESTATE AT 419-363-8131





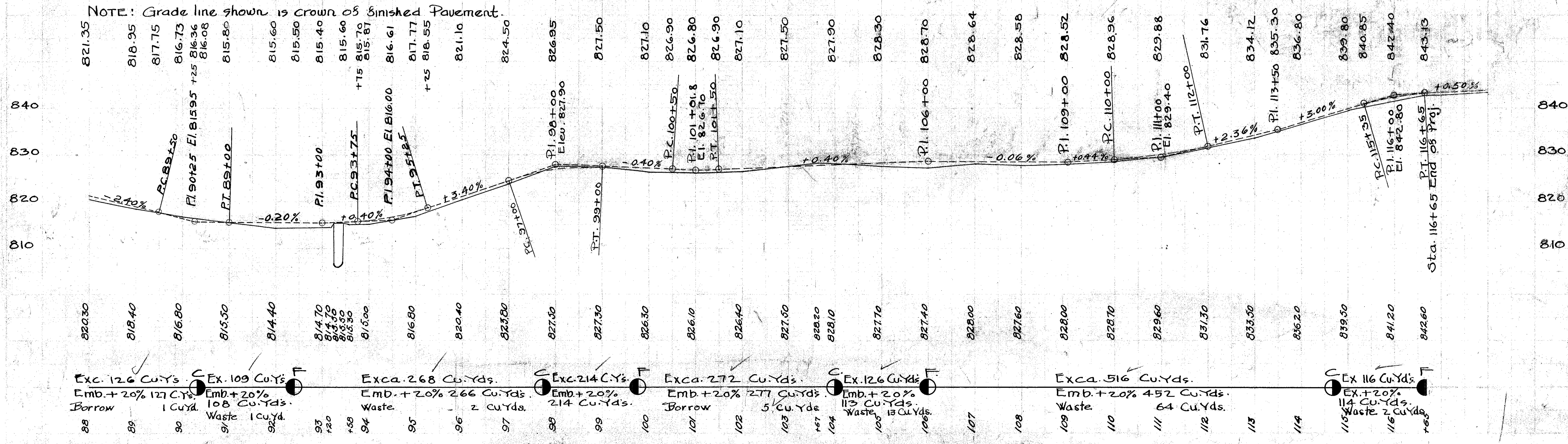
**CURVE WIDENING STA. 98+01.8 TO 101+26.8**  
Add 192 Sq.Yds. 3or Base & Top Course

LEFT	Width	Sta.	Profile Gr. Elev.	Width	RIGHT
826.76	9	98+01.8	826.95	9.0	826.76
827.50	9	98+26.8	827.27	10.5	827.08
828.11	9	98+51.8	827.46	13.33	827.27
828.61	9	98+76.8	827.54	15.85	827.35
829.00	9	99+01.8	827.50	17.00	827.31
828.90	9	99+26.8	827.40	17.00	827.21
828.80	9	99+51.8	827.30	17.00	827.11
828.70	9	99+76.8	827.20	17.00	827.01
828.60	9	100+01.8	827.10	17.00	826.91
828.50	9	100+26.8	827.00	17.00	826.81
827.97	9	100+51.8	826.90	15.85	826.71
827.47	9	100+76.8	826.82	13.33	826.63
827.03	9	101+01.8	826.80	10.5	826.61
826.63	9	101+26.8	826.82	9.0	826.63

NOTE: From Sta. 93+23.5 to 93+50.5 Bridge  
Type 'A' Deduct 54 Sq. Yds. Base Course  
Type 'C' & 'D' " " " " " "  
Type 'B' " " " " " "  
Type 'A' Add 59 " " " " " "  
Type 'C' & 'D' " " " " " "  
Type 'A' " " " " " "  
Type 'C' & 'D' " " " " " "

B.M. Govt. B.M. N.W. Abut. Br. Sta. 93+36  
Elev. 815.503

B.M. Cross in Sandstone Doorsill Sch. H. N.W. Cor.  
Elev. 846.42



NOTE: Grade line shown is crown of finished pavement.

Exc. 126 Cu.Yds. Emb. + 20% 127 Cu.Yds. Borrow 1 Cu.Yd.  
Ex. 109 Cu.Yds. Emb. + 20% 108 Cu.Yds. Waste 1 Cu.Yd.  
Exca. 268 Cu.Yds. Emb. + 20% 266 Cu.Yds. Waste 2 Cu.Yds.  
Exca. 214 Cu.Yds. Emb. + 20% 214 Cu.Yds.  
Exca. 272 Cu.Yds. Emb. + 20% 277 Cu.Yds. Borrow 5 Cu.Yds.  
Ex. 126 Cu.Yds. Emb. + 20% 113 Cu.Yds. Waste 13 Cu.Yds.  
Exca. 516 Cu.Yds. Emb. + 20% 452 Cu.Yds. Waste 64 Cu.Yds.  
Ex. 116 Cu.Yds. Emb. + 20% 114 Cu.Yds. Waste 2 Cu.Yds.