

O.D.O.T. DISTRICT 2 SURVEY OFFICE (USE ONLY)

PERSONNEL

REFERENCE NO. 1

SHEET 1 OF 22

NOTES O'DONNELL

DATE 5/11/21

ROUTE US 23

H.C. AUBLE

WEATHER SUNNY

COUNTY SENECA

R.C. NIESE

TEMP. 45°

TOWNSHIP BIG SPRING

SECTION 32

DWG BY RHOADES

PID 85264

T 1 N R 13 E

TYPE MONUMENT SM.R.R.SPIKE

~~ON SURFACE~~ - BELOW 2"

OFFSET CL PAVEMENT 1.0' ~~±~~ : RT

- TO - EDGE PAVEMENT

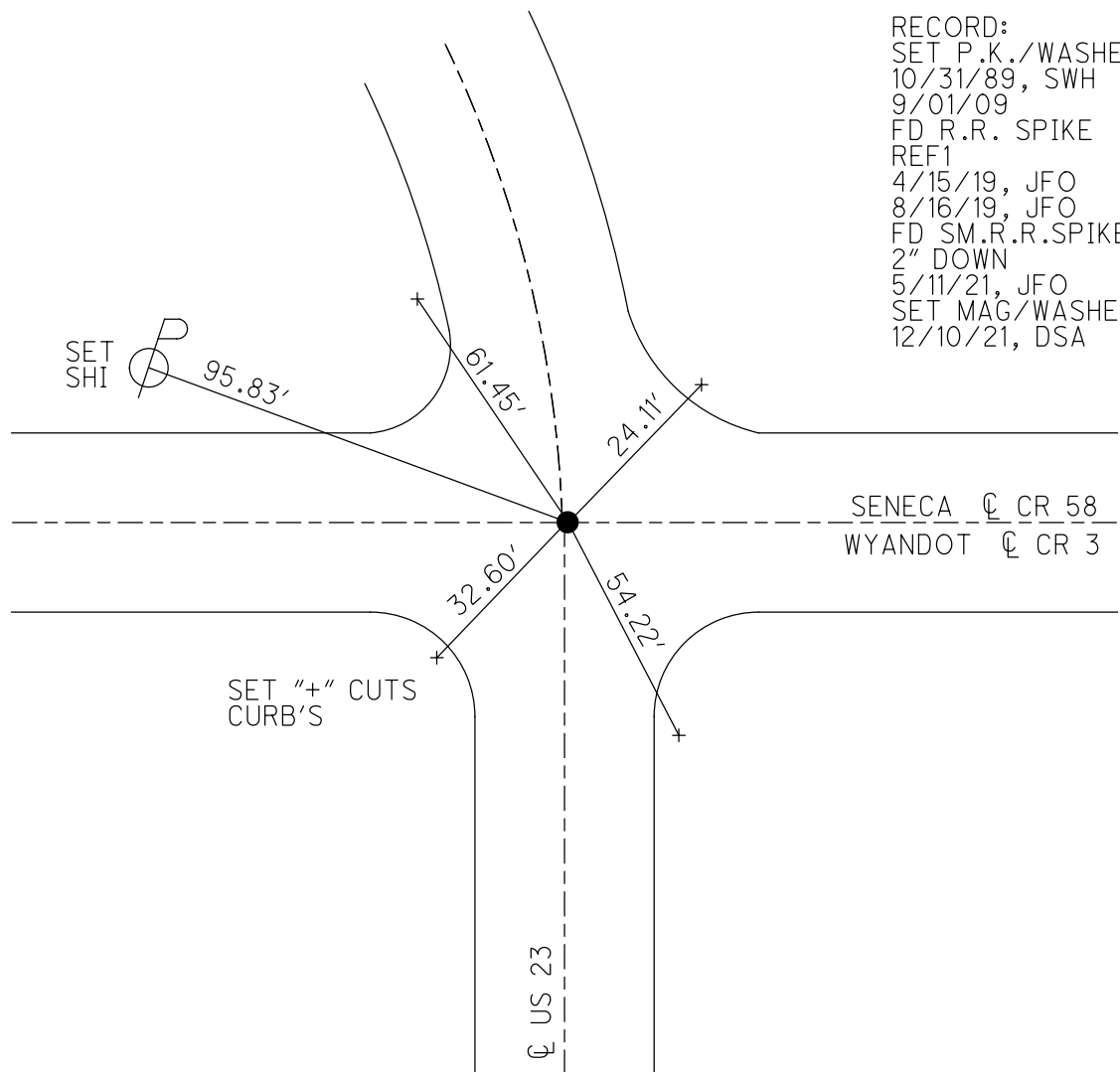
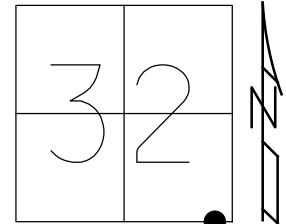
STATION: 0+00

HORIZ.DATUM: NAD83 2011

GEOID: NAVD88 2012A

GRID: NORTHING: 484173.153

EASTING: 1724824.340



RECORD:
 SET P.K./WASHER
 10/31/89, SWH
 9/01/09
 FD R.R. SPIKE
 REF1
 4/15/19, JFO
 8/16/19, JFO
 FD SM.R.R.SPIKE
 2" DOWN
 5/11/21, JFO
 SET MAG/WASHER
 12/10/21, DSA

O.D.O.T. DISTRICT 2 SURVEY OFFICE (USE ONLY)

PERSONNEL

REFERENCE NO. 2

SHEET 2 OF 22

NOTES O'DONNELL

DATE 5/11/21

ROUTE US 23

H.C. AUBLE

WEATHER SUNNY

COUNTY SENECA

R.C. NIESE

TEMP. 45°

TOWNSHIP BIG SPRING

SECTION 32

DWG BY RHOADES

PID 85264

T 1 N R 13 E

TYPE MONUMENT BOLT SPIKE/WASHER

~~ON SURFACE~~ - BELOW 1"

OFFSET \varnothing PAVEMENT 1.9' ~~ET~~ : RT

7.9' TO EAST EDGE PAVEMENT

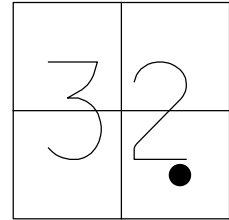
STATION: 17+98.63

HORIZ.DATUM: NAD83 2011

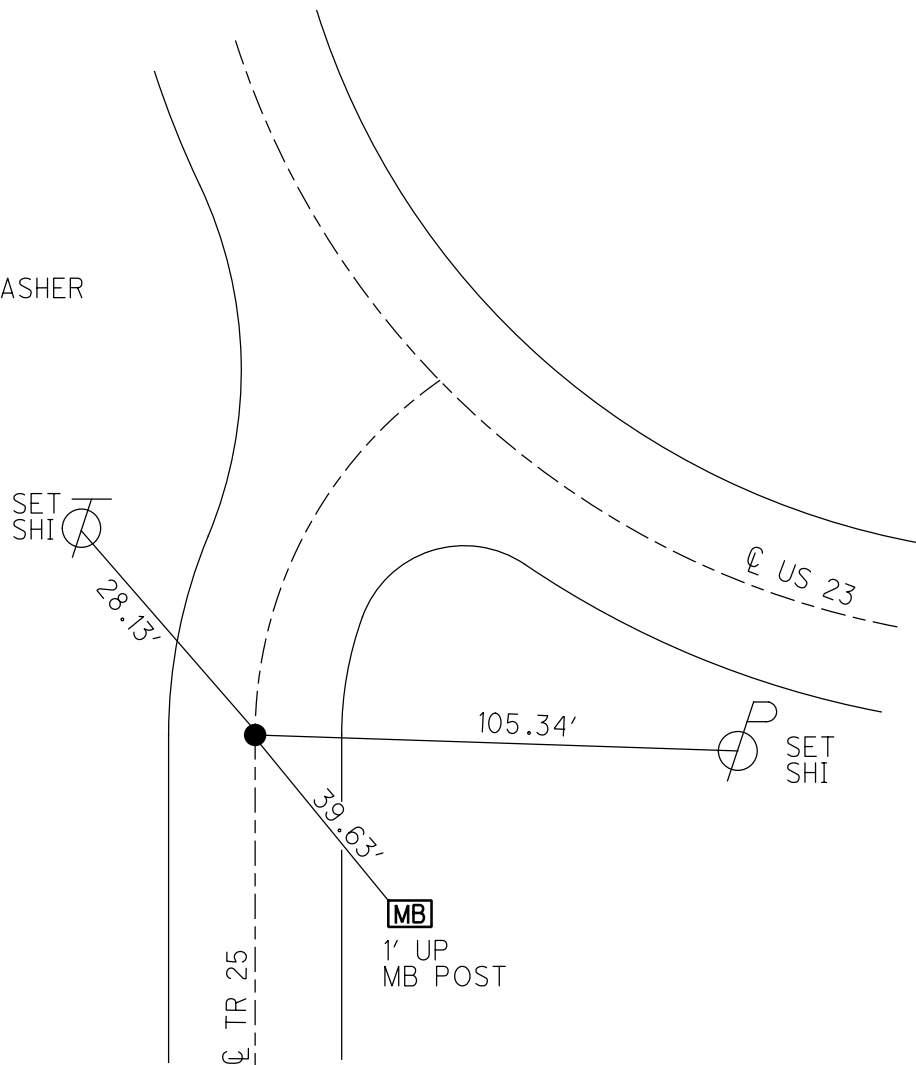
GEOID: NAVD88 2012A

GRID: NORTHING: 485571.705

EASTING: 1723716.087



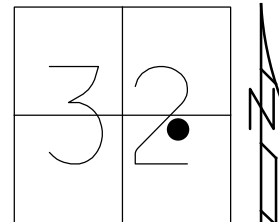
RECORD: P.I.
 STA. 17+98.63
 $\Delta = 42^\circ 55' RT$
 $D = 4^\circ$
 $R = 1432.69'$
 $T = 563.13'$
 $L = 1072.92'$
 $E = 106.72'$
 FD BOLT
 1955
 FD BOAT SPIKE/WASHER
 1" DOWN
 REF2
 1/6/20, JFO



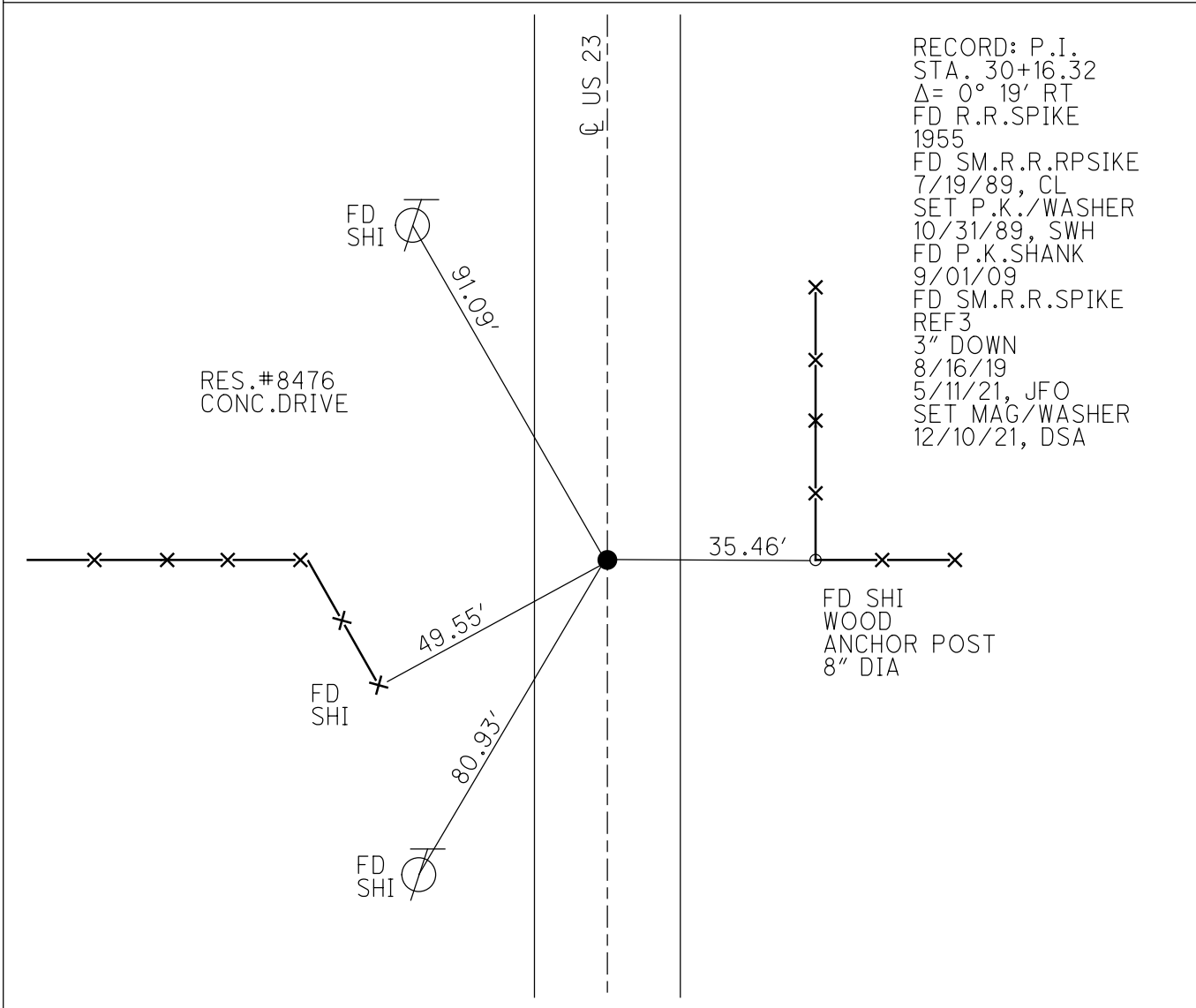
O.D.O.T. DISTRICT 2 SURVEY OFFICE (USE ONLY)

PERSONNEL _____ REFERENCE NO. 3 SHEET 3 OF 22
 NOTES O'DONNELL DATE 10/26/18 ROUTE US 23
 H.C. AUBLE WEATHER CLOUDY COUNTY SENECA
 R.C. NIESE TEMP. 43° TOWNSHIP BIG SPRING
 DWG BY RHOADES PID 85264 SECTION 32
 T 1 N R 13 E

TYPE MONUMENT SM.R.R.SPIKE
~~ON SURFACE~~ - BELOW 3"
 OFFSET CL PAVEMENT ON LT : RT
12.4' TO LT EDGE PAVEMENT
 STATION: 30+16.32



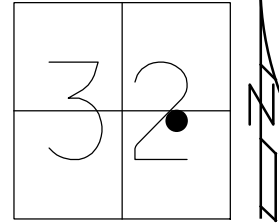
HORZ.DATUM: NAD83 2011 GEOID: NAVD88 2012A
 GRID: NORTHING: 486842.076 EASTING: 1723704.728



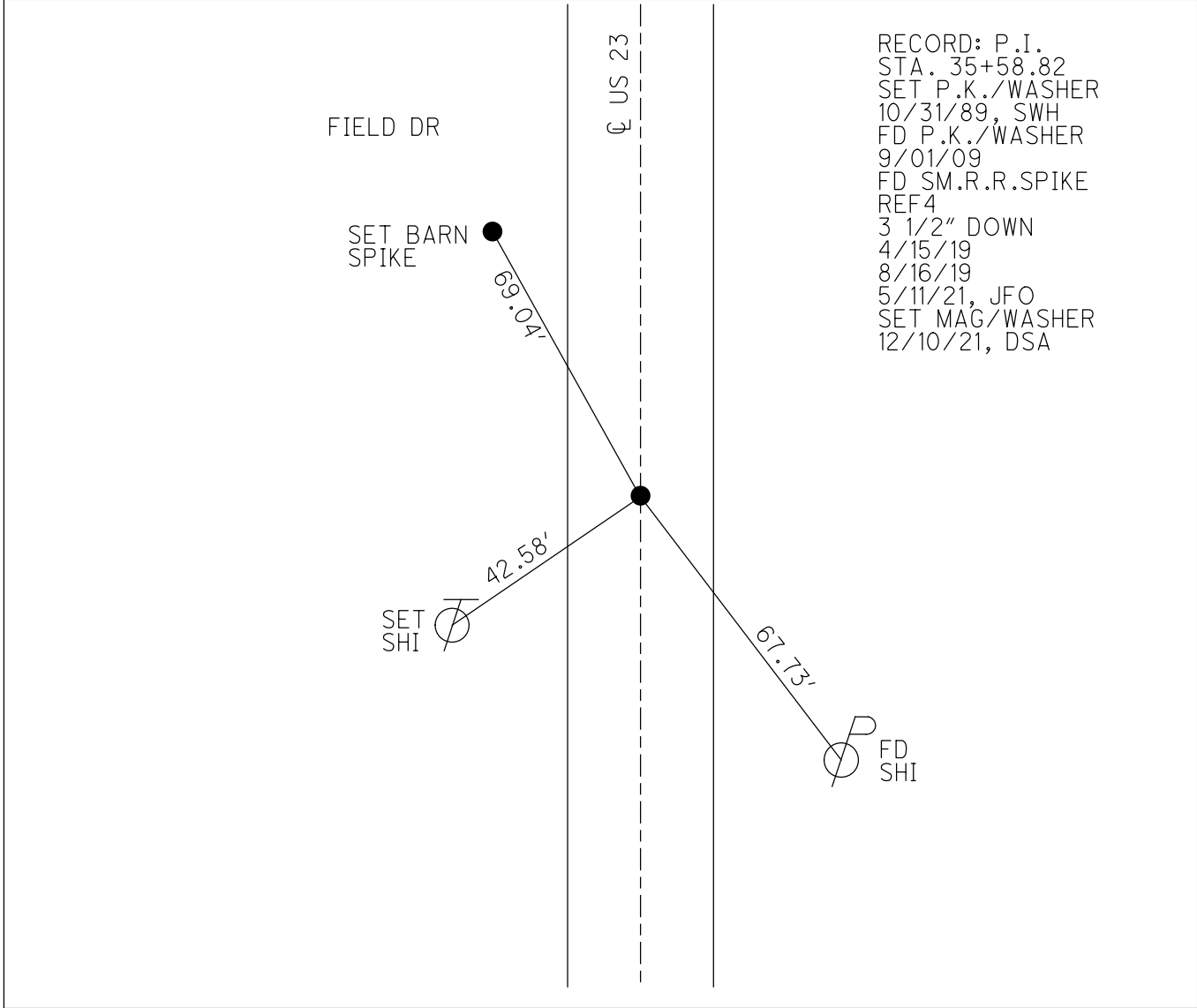
O.D.O.T. DISTRICT 2 SURVEY OFFICE (USE ONLY)

PERSONNEL _____ REFERENCE NO. 4 SHEET 4 OF 22
 NOTES O'DONNELL DATE 5/11/21 ROUTE US 23
 H.C. AUBLE WEATHER SUNNY COUNTY SENECA
 R.C. NIESE TEMP. 45° TOWNSHIP BIG SPRING
 _____ SECTION 32
 DWG BY RHOADES PID 85264 T 1 N R 13 E

TYPE MONUMENT SM.R.R.SPIKE
 ON ~~SURFACE~~ - BELOW 3.5"
 OFFSET \varnothing PAVEMENT ON LT : RT
11.6' TO LT EDGE PAVEMENT
 STATION: 35+58.82



HORZ.DATUM: NAD83 2011 GEOID: NAVD88 2012A
 GRID: NORTHING: 487384.500 EASTING: 1723699.994

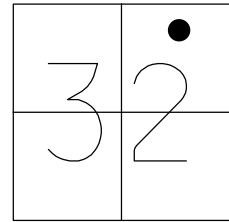


RECORD: P.I.
 STA. 35+58.82
 SET P.K./WASHER
 10/31/89, SWH
 FD P.K./WASHER
 9/01/09
 FD SM.R.R.SPIKE
 REF4
 3 1/2" DOWN
 4/15/19
 8/16/19
 5/11/21, JFO
 SET MAG/WASHER
 12/10/21, DSA

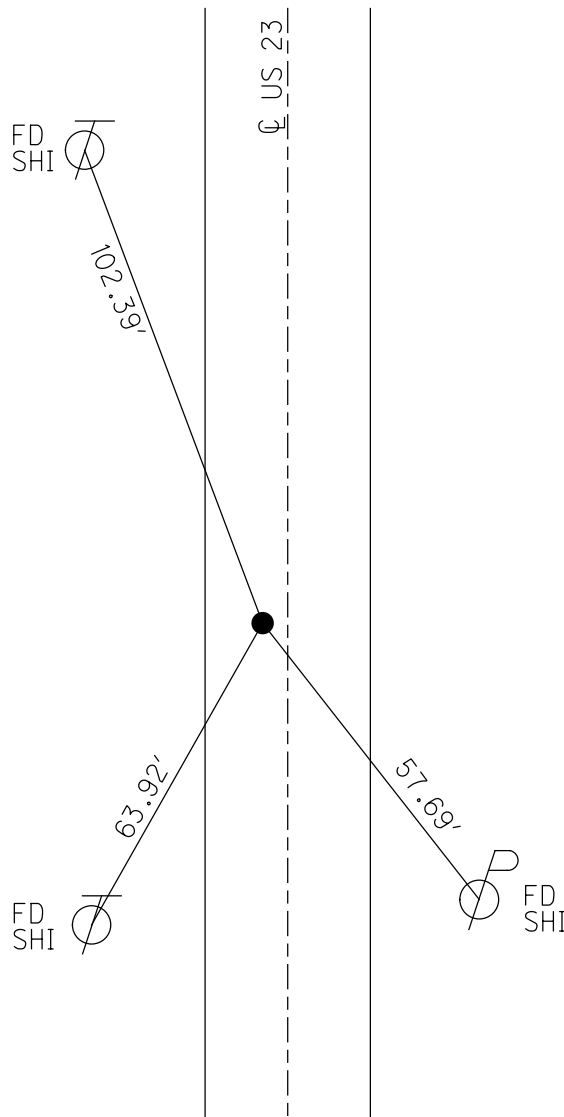
O.D.O.T. DISTRICT 2 SURVEY OFFICE (USE ONLY)

PERSONNEL _____ REFERENCE NO. 5 SHEET 5 OF 22
 NOTES O'DONNELL DATE 5/11/21 ROUTE US 23
 H.C. AUBLE WEATHER SUNNY COUNTY SENECA
 R.C. NIESE TEMP. 45° TOWNSHIP BIG SPRING
 DWG BY RHOADES PID 85264 SECTION 32
 T 1 N R 13 E

TYPE MONUMENT sm.r.r.spike
 ON ~~SURFACE~~ - BELOW 3.5"
 OFFSET $\text{\textcircled{C}}$ PAVEMENT 1.4' LT : ~~RT~~
10.1' TO lt EDGE PAVEMENT
 STATION: 54+60.69



HORIZ.DATUM: NAD83 2011 GEOID: NAVD88 2012A
 GRID: NORTHING: 489286.302 EASTING: 1723687.120

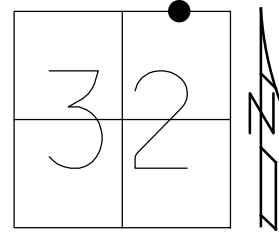


RECORD: P.I.
 STA. 54+60.69
 $\Delta = 0^\circ 52' \text{ RT}$
 FD R.R.SPIKE
 7/19/89, CL
 SET P.K./WASHER
 10/31/89, SWH
 FD P.K.SHANK
 9/01/09
 FD SM.R.R.SPIKE
 3 1/2" DOWN
 REF5
 4/15/19
 8/16/19
 5/11/21, JFO
 SET MAG/WASHER
 12/10/21, DSA

O.D.O.T. DISTRICT 2 SURVEY OFFICE (USE ONLY)

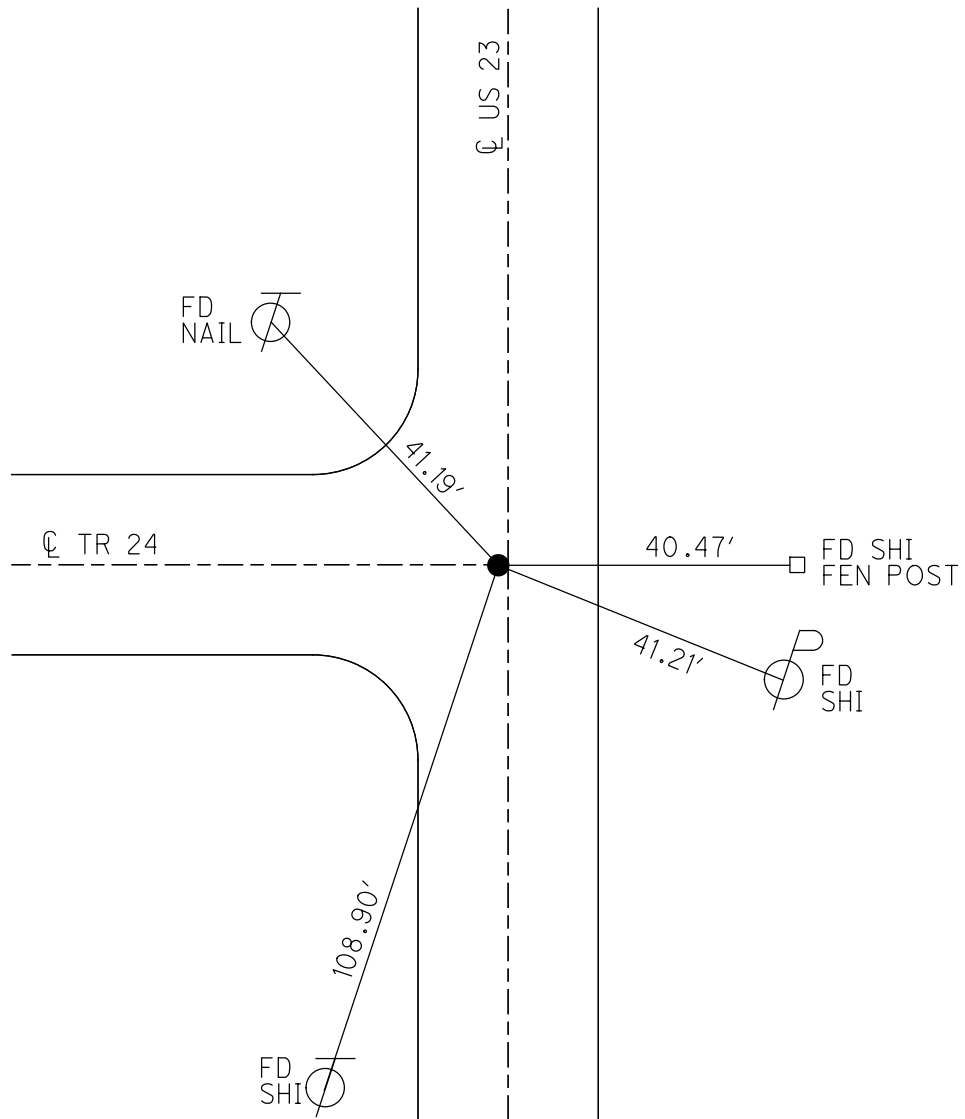
PERSONNEL _____ REFERENCE NO. 6 SHEET 6 OF 22
 NOTES O'DONNELL DATE 5/11/21 ROUTE US 23
 H.C. AUBLE WEATHER SUNNY COUNTY SENECA
 R.C. NIESE TEMP. 45° TOWNSHIP BIG SPRING
 DWG BY RHOADES PID 85264 SECTION 32
 T 1 N R 13 E

TYPE MONUMENT SM.R.R.SPIKE
 ON ~~SURFACE~~ - BELOW 3"
 OFFSET \odot PAVEMENT 0.4' LT : RT
12.9' TO LT EDGE PAVEMENT
 STATION: 56+58.97



HORZ.DATUM: NAD83 2011 GEOID: NAVD88 2012A
 GRID: NORTHING: 489484.544 EASTING: 1723689.304

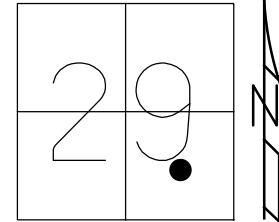
RECORD:
 STA.56+58.97
 $\Delta = 0^\circ 52' RT$
 FD R.R.SPIKE
 1955
 FD SM.R.R.SPIKE
 3" DOWN
 7/19/89, CL
 SET P.K./WASHER
 10/31/89, SWH
 FD P.K./WASHER
 9/01/09
 FD SM.R.R.SPIKE
 3" DOWN
 REF6
 8/16/19
 5/11/21, JFO
 SET MAG/WASHER
 12/10/21, DSA



O.D.O.T. DISTRICT 2 SURVEY OFFICE (USE ONLY)

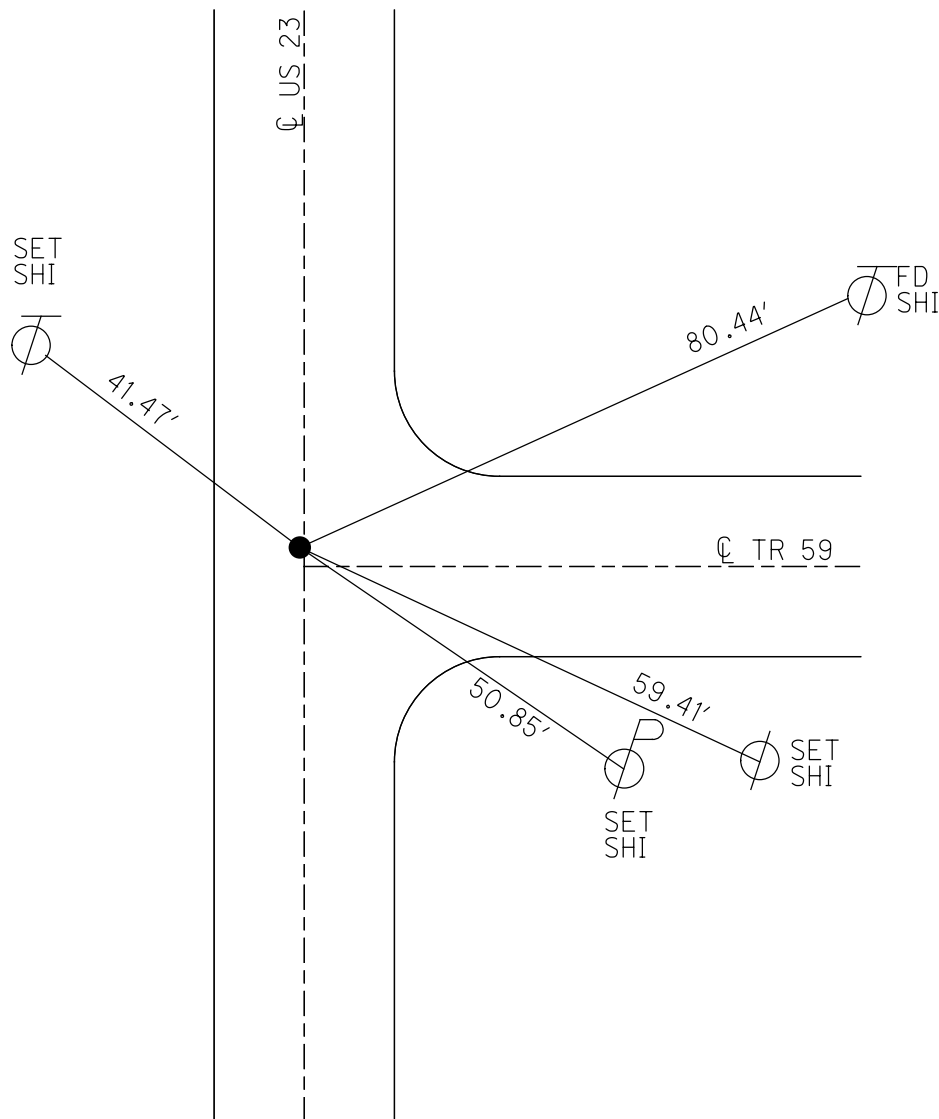
PERSONNEL _____ REFERENCE NO. 7 SHEET 7 OF 22
 NOTES O'DONNELL DATE 5/11/21 ROUTE US 23
 H.C. AUBLE WEATHER SUNNY COUNTY SENECA
 R.C. NIESE TEMP. 45° TOWNSHIP BIG SPRING
 DWG BY RHOADES PID 85264 SECTION 29
 T 1 N R 13 E

TYPE MONUMENT P.K.NAIL
 ON SURFACE - ~~BELOW~~ ON _____
 OFFSET \bar{C} PAVEMENT 0.5' LT : RT
11.3' TO LT EDGE PAVEMENT
 STATION: 67+42.27



HORZ.DATUM: NAD83 2011 GEOID: NAVD88 2012A
 GRID: NORTHING: 490567.747 EASTING: 1723702.566

RECORD: P.I.
 STA. 67+42.27
 $\Delta = 0^\circ 05' \text{ LT}$
 FD R.R.SPIKE
 1955
 SET P.K./WASHER
 10/31/89, SWH
 FD SM.R.R.SPIKE
 7/19/89, CL
 FD P.K.SHANK
 9/01/09
 FD P.K.NAIL
 REF7
 4/15/19
 8/10/19
 5/11/21, JFO
 SET MAG/WASHER
 12/10/21, DSA



O.D.O.T. DISTRICT 2 SURVEY OFFICE (USE ONLY)

PERSONNEL

REFERENCE NO. 7 A

SHEET 8 OF 22

NOTES O'DONNELL

DATE 5/11/21

ROUTE US 23

H.C. AUBLE

WEATHER SUNNY

COUNTY SENECA

R.C. NIESE

TEMP. 45°

TOWNSHIP BIG SPRING

SECTION 29

DWG BY RHOADES PID 85264

T 1 N R 13 E

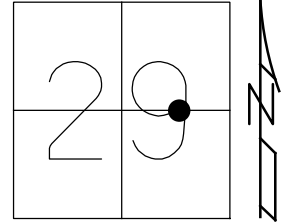
TYPE MONUMENT SM.R.R.SPIKE

ON ~~SURFACE~~ - BELOW 3.5"

OFFSET 0.5' C PAVEMENT LT : ~~RT~~

11.1' TO LT EDGE PAVEMENT

STATION: 83+42.33



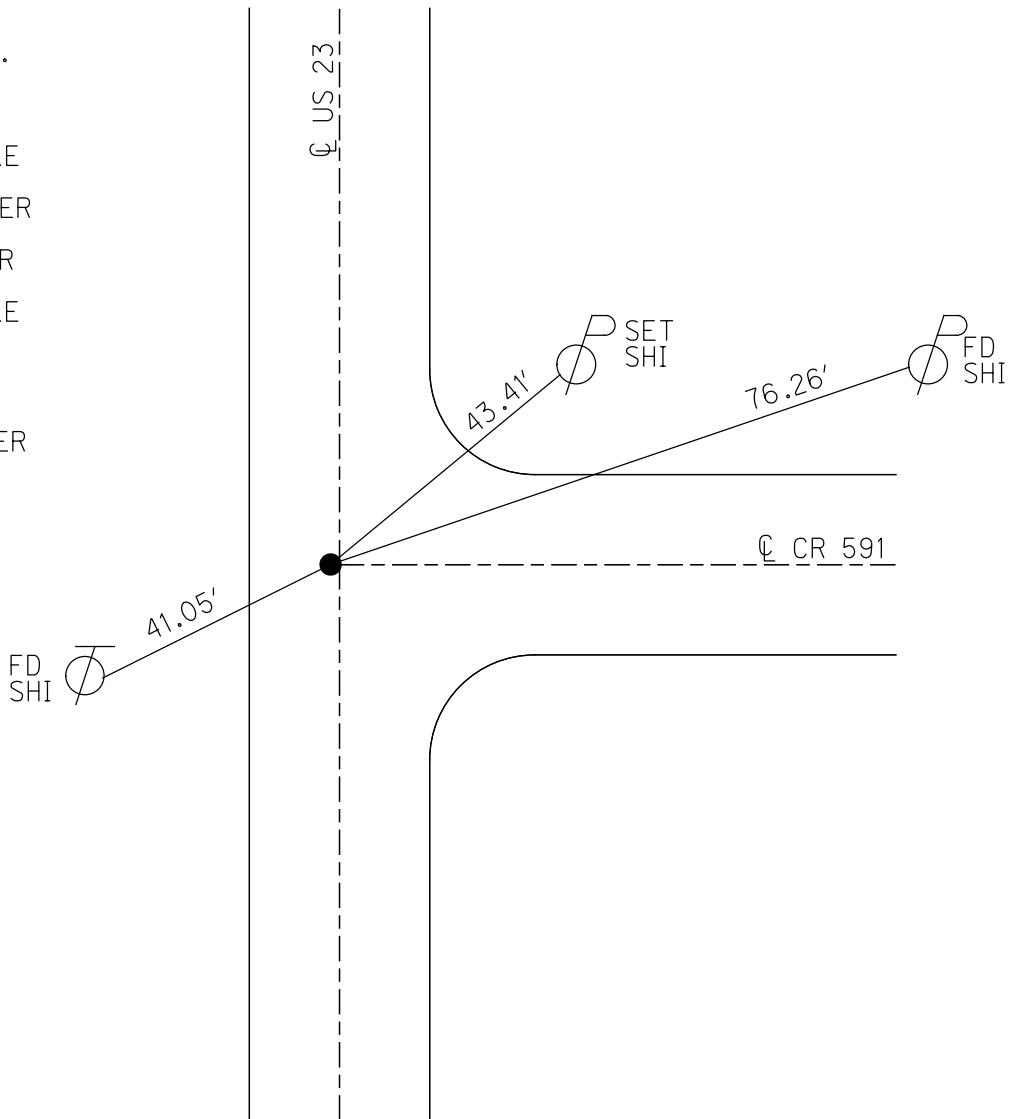
HORIZ.DATUM: NAD83 2011

GEOID: NAVD88 2012A

GRID: NORTHING: 492170.057

EASTING: 1723721.813

RECORD: P.O.T.
 STA.83+42.33
 FD R.R.SPIKE
 1955
 FD SM.R.R.SPIKE
 7/19/89, CL
 SET P.K./WASHER
 10/31/89, SWH
 FD P.K./WASHER
 9/01/09
 FD SM.R.R.SPIKE
 3.5" DOWN
 REFA7
 8/16/19
 5/11/21, JFO
 SET MAG/WASHER
 12/10/21, DSA



O.D.O.T. DISTRICT 2 SURVEY OFFICE (USE ONLY)

PERSONNEL

REFERENCE NO. 8

SHEET 9 OF 22

NOTES SCHNEIDER

DATE 8/25/69

ROUTE US 23

H.C. MOSSER

WEATHER HOT

COUNTY SENECA

R.C. BARBOUR

TEMP. 90°

TOWNSHIP BIG SPRING

POTTS

DWG BY NASON

PID 85264

SECTION 29

T 1 N R 13 E

TYPE MONUMENT P.K.NAIL

ON SURFACE - BELOW ON

OFFSET ϕ PAVEMENT LT : RT

 TO EDGE PAVEMENT

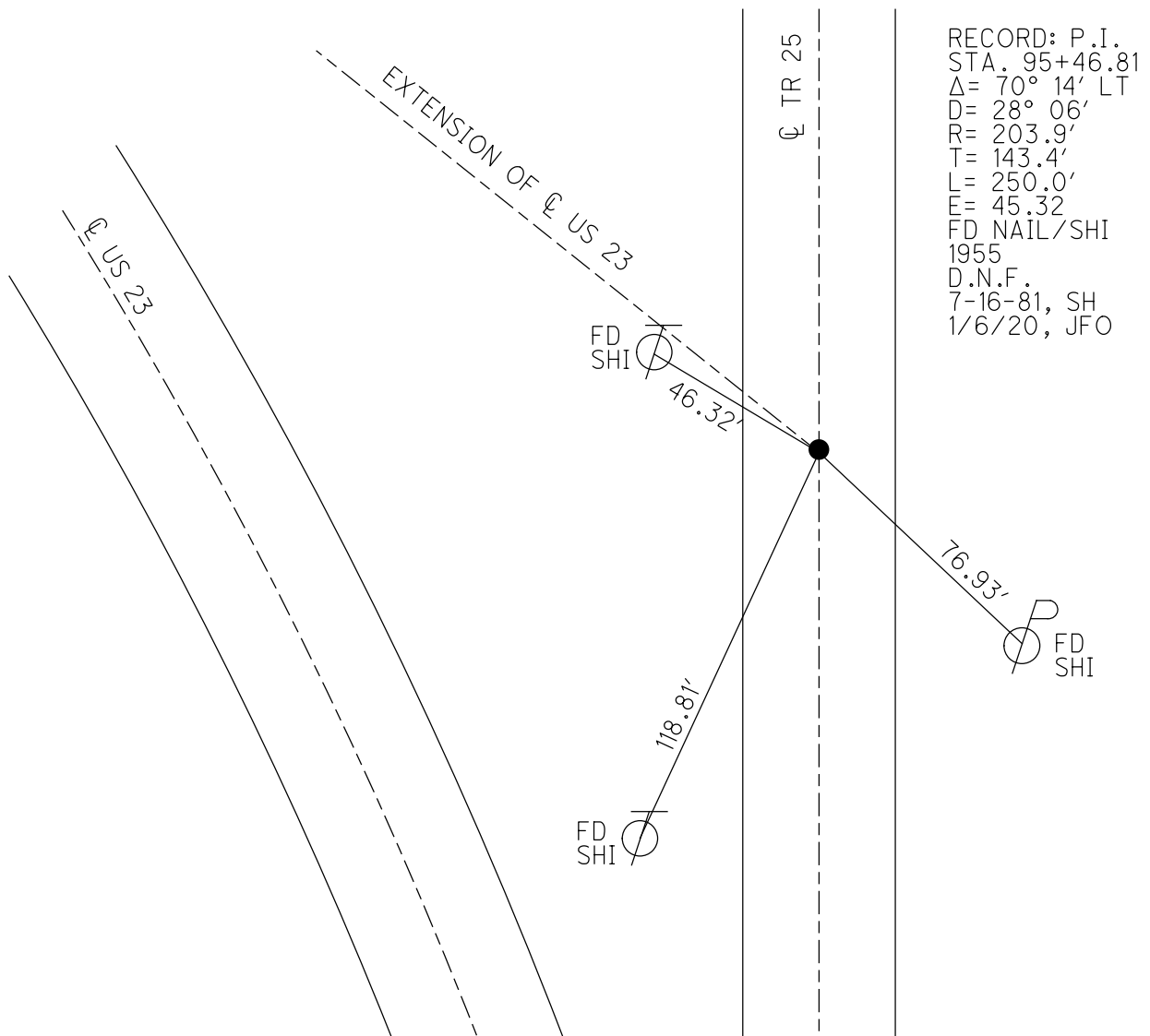
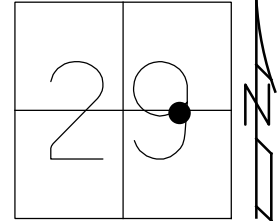
STATION: 95+46.81

HORIZ.DATUM:

GEOID:

GRID: NORTHING:

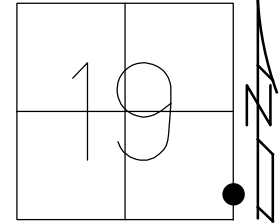
EASTING:



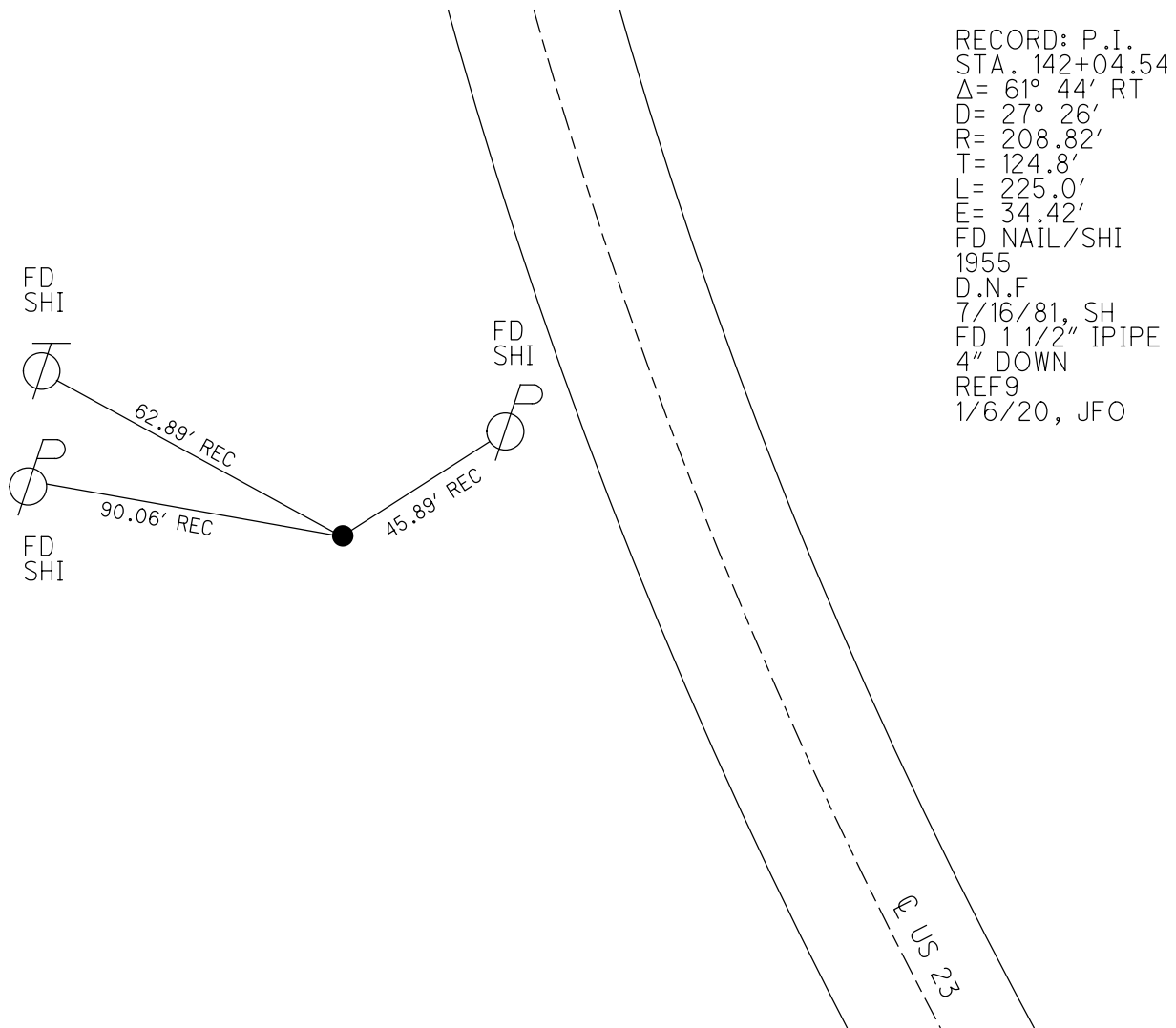
O.D.O.T. DISTRICT 2 SURVEY OFFICE (USE ONLY)

PERSONNEL _____ REFERENCE NO. 9 SHEET 10 OF 22
 NOTES RHOADES DATE 1/6/20 ROUTE US 23
 H.C. O'DONNELL WEATHER WINDY COUNTY SENECA
 R.C. _____ TEMP. 38° TOWNSHIP BIG SPRING
 DWG BY RHOADES PID 85264 SECTION 19
 T 1 N R 13 E

TYPE MONUMENT 1 1/2" IPIPE
 ON ~~SURFACE~~ - BELOW 4"
 OFFSET \varnothing PAVEMENT _____ LT : RT
 _____ TO _____ EDGE PAVEMENT
 STATION: 142+04.54



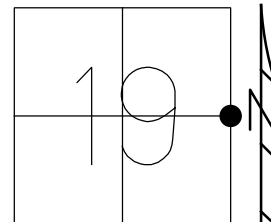
HORIZ.DATUM: NAD83 2011 GEOID: NAVD88 2012A
 GRID: NORTHING: 495614.791 EASTING: 1719769.268



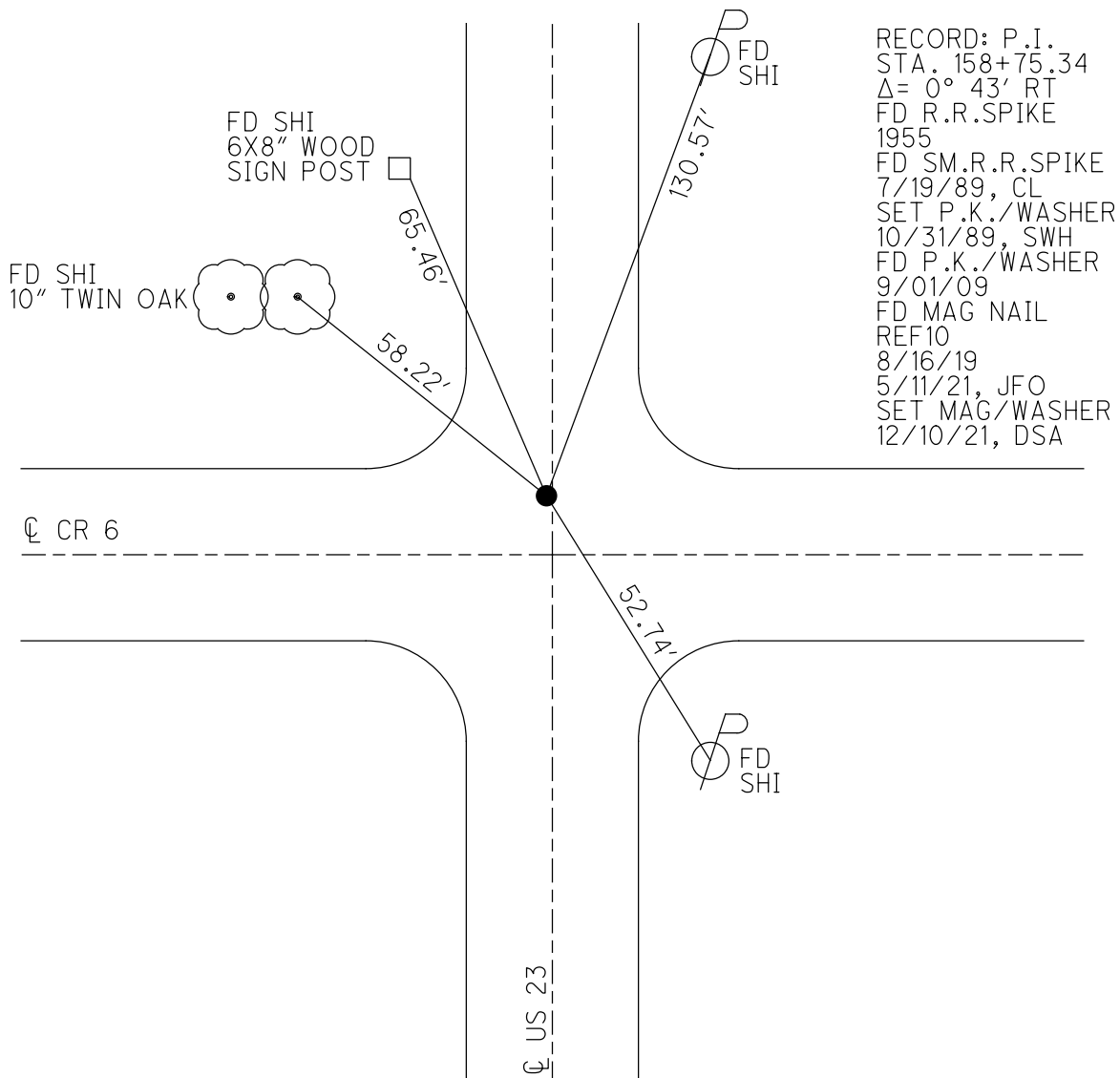
O.D.O.T. DISTRICT 2 SURVEY OFFICE (USE ONLY)

PERSONNEL _____ REFERENCE NO. 10 SHEET 11 OF 22
 NOTES O'DONNELL DATE 5/11/21 ROUTE US 23
 H.C. AUBLE WEATHER SUNNY COUNTY SENECA
 R.C. NIESE TEMP. 45° TOWNSHIP BIG SPRING
 _____ SECTION 19
 DWG BY RHOADES PID 85264 T 1 N R 13 E

TYPE MONUMENT MAG NAIL
 ON SURFACE - ~~BELOW~~ ON
 OFFSET CL PAVEMENT 0.9' LT : ~~RT~~
- TO - EDGE PAVEMENT 3.1' N. OF CL CR 6
 STATION: 158+75.34



HORZ.DATUM: NAD83 2011 GEOID: NAVD88 2012A
 GRID: NORTHING: 497514.536 EASTING: 1719754.865



O.D.O.T. DISTRICT 2 SURVEY OFFICE (USE ONLY)

PERSONNEL

REFERENCE NO. 11

SHEET 12 OF 22

NOTES O'DONNELL

DATE 5/11/21

ROUTE US 23

H.C. AUBLE

WEATHER SUNNY

COUNTY SENECA

R.C. NIESH

TEMP. 45°

TOWNSHIP BIG SPRING

SECTION 19

DWG BY RHOADES

PID 85264

T 1 N R 13 E

TYPE MONUMENT SM.R.R.SPIKE

ON ~~SURFACE~~ - BELOW 3"

OFFSET CL PAVEMENT 0.5' LT : RT

10.3 TO LT EDGE PAVEMENT

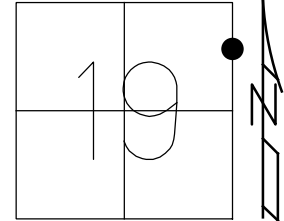
STATION: 170+97.30

HORZ.DATUM: NAD83 2011

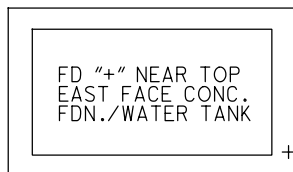
GEOID: NAVD88 2012A

GRID: NORTHING: 498736.558

EASTING: 1719760.575



RECORD: P.O.T.
 STA. 170+97.30
 FD SM.R.R.SPIKE
 7/19/89, CL
 SET P.K./WASHER
 10/31/89, SWH
 FD P.K./WASHER
 9/01/09
 FD SM.R.R.SPIKE
 3" DOWN
 REF11
 8/16/19
 5/11/21, JFO
 SET MAG/WASHER
 12/10/21, DSA



46.62'

CL US 23

FD "+"
12" RCP



34.12 P

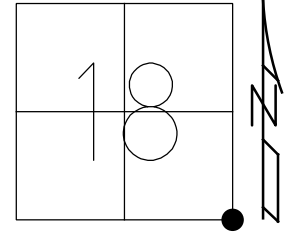
98.94'



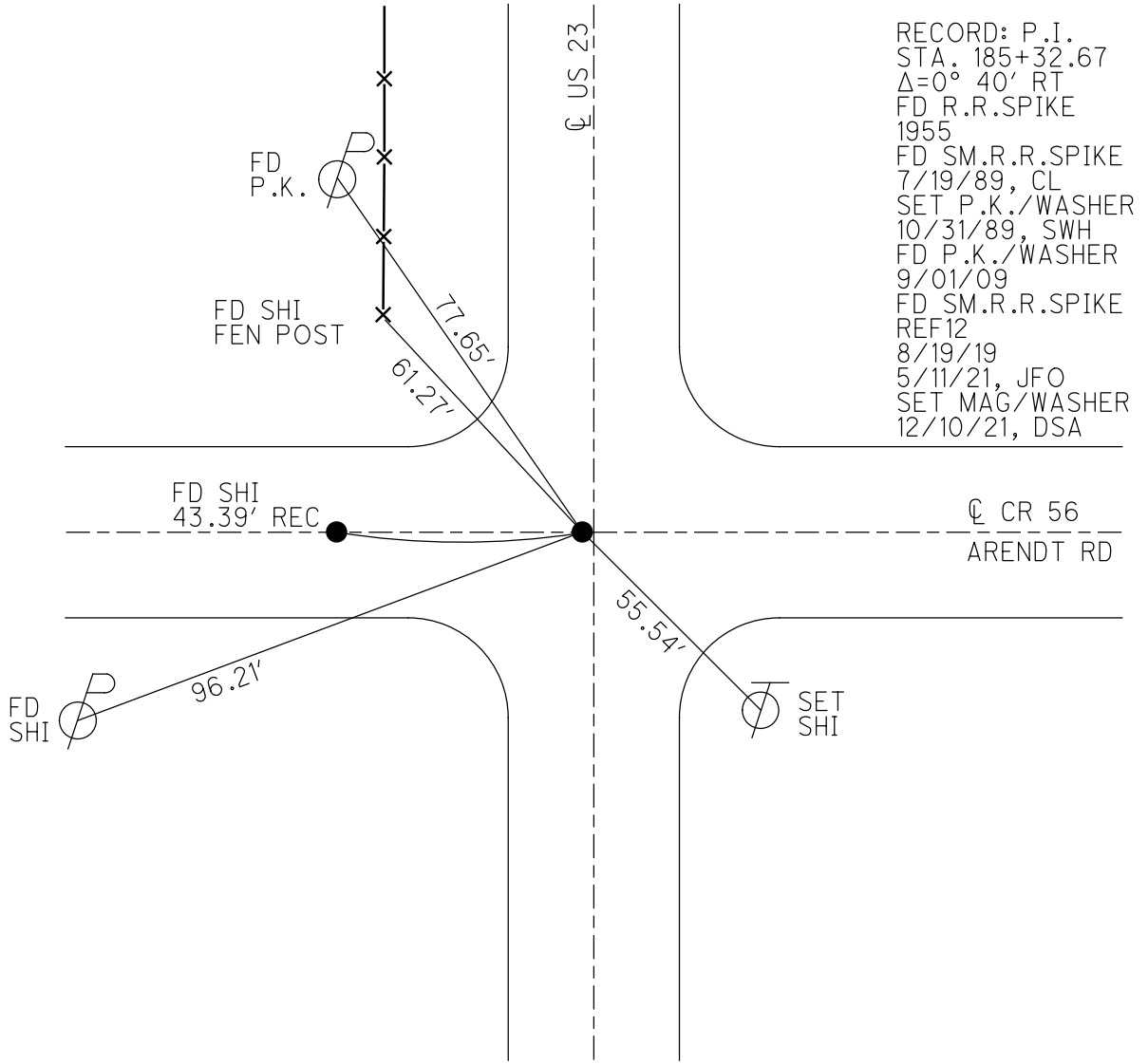
O.D.O.T. DISTRICT 2 SURVEY OFFICE (USE ONLY)

PERSONNEL _____ REFERENCE NO. 12 SHEET 13 OF 22
 NOTES O'DONNELL DATE 5/11/21 ROUTE US 23
 H.C. AUBLE WEATHER SUNNY COUNTY SENECA
 R.C. NIESE TEMP. 45° TOWNSHIP BIG SPRING
 DWG BY RHOADES PID 85264 SECTION 18
 T 1 N R 13 E

TYPE MONUMENT SM.R.R.SPIKE
 ON ~~SURFACE~~ - BELOW 3.5"
 OFFSET \varnothing PAVEMENT 1.5' LT : ~~RT~~
 - TO - EDGE PAVEMENT
 STATION: 185+32.67



HORZ.DATUM: NAD83 2011 GEOID: NAVD88 2012A
 GRID: NORTHING: 500171.803 EASTING: 1719767.965



O.D.O.T. DISTRICT 2 SURVEY OFFICE (USE ONLY)

PERSONNEL _____

REFERENCE NO. 13

SHEET 14 OF 22

NOTES O'DONNELL

DATE 5/11/21

ROUTE US 23

H.C. AUBLE

WEATHER WINDY

COUNTY SENECA

R.C. NIESE

TEMP. 45°

TOWNSHIP BIG SPRING

SECTION 18

DWG BY RHOADES PID 85264

T 1 N R 13 E

TYPE MONUMENT P.K.NAIL

ON SURFACE - ~~BELOW~~ ON

OFFSET 0.3' LT : RT

11.8' TO LT EDGE PAVEMENT

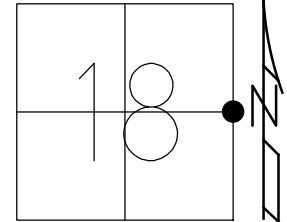
STATION: 210+12

HORZ.DATUM: NAD83 2011

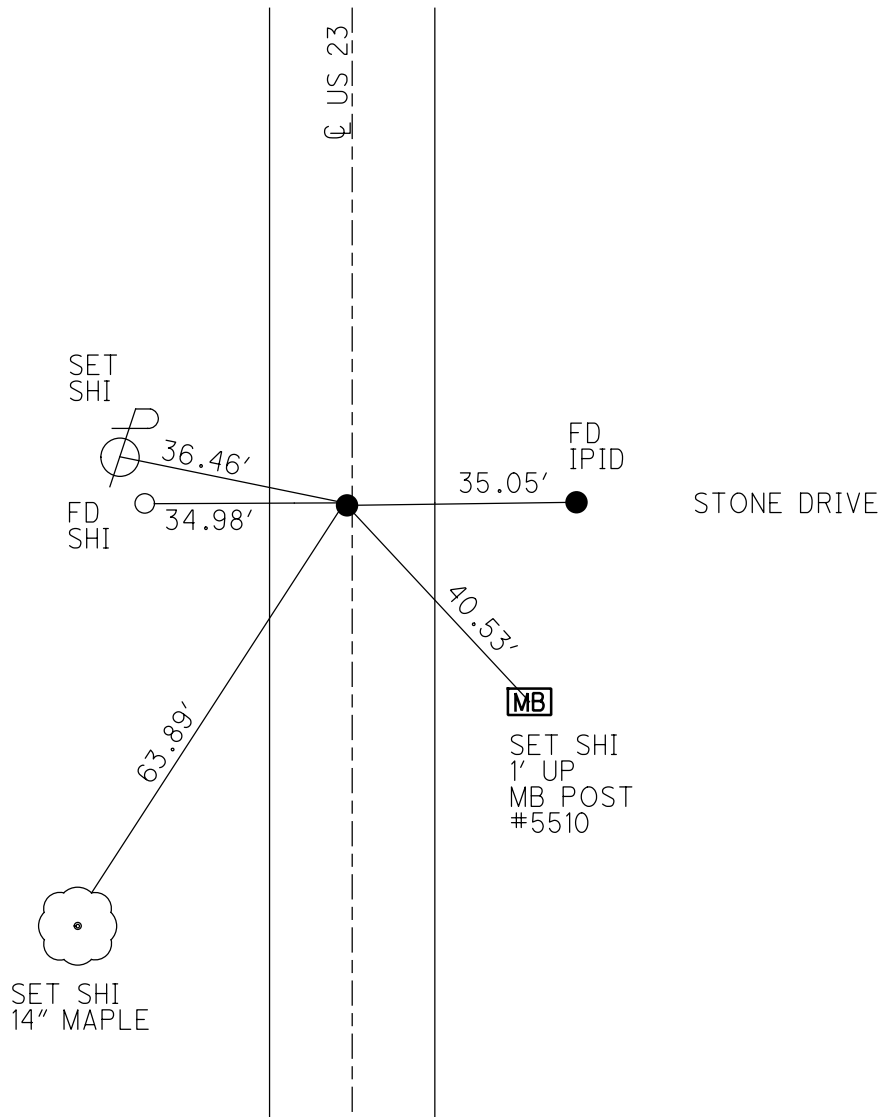
GEOID: NAVD88 2012A

GRID: NORTHING: 502830.815

EASTING: 1719812.923



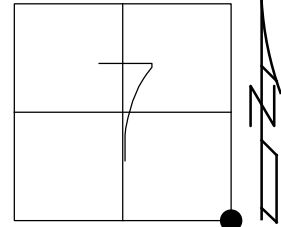
RECORD: P.I.
 STA. 211+92.77
 $\Delta = 0^\circ 06' \text{ LT}$
 FD R.R.SPIKE
 1955
 FD SM.R.R.SPIKE
 7/21/89, CL
 SET P.K./WASHER
 10/31/89, SWH
 FD P.K./WASHER
 9/01/09
 FD P.K.NAIL
 REF13
 4/15/19
 8/16/19
 5/11/21, JFO
 SET MAG/WASHER
 12/10/21, DSA



O.D.O.T. DISTRICT 2 SURVEY OFFICE (USE ONLY)

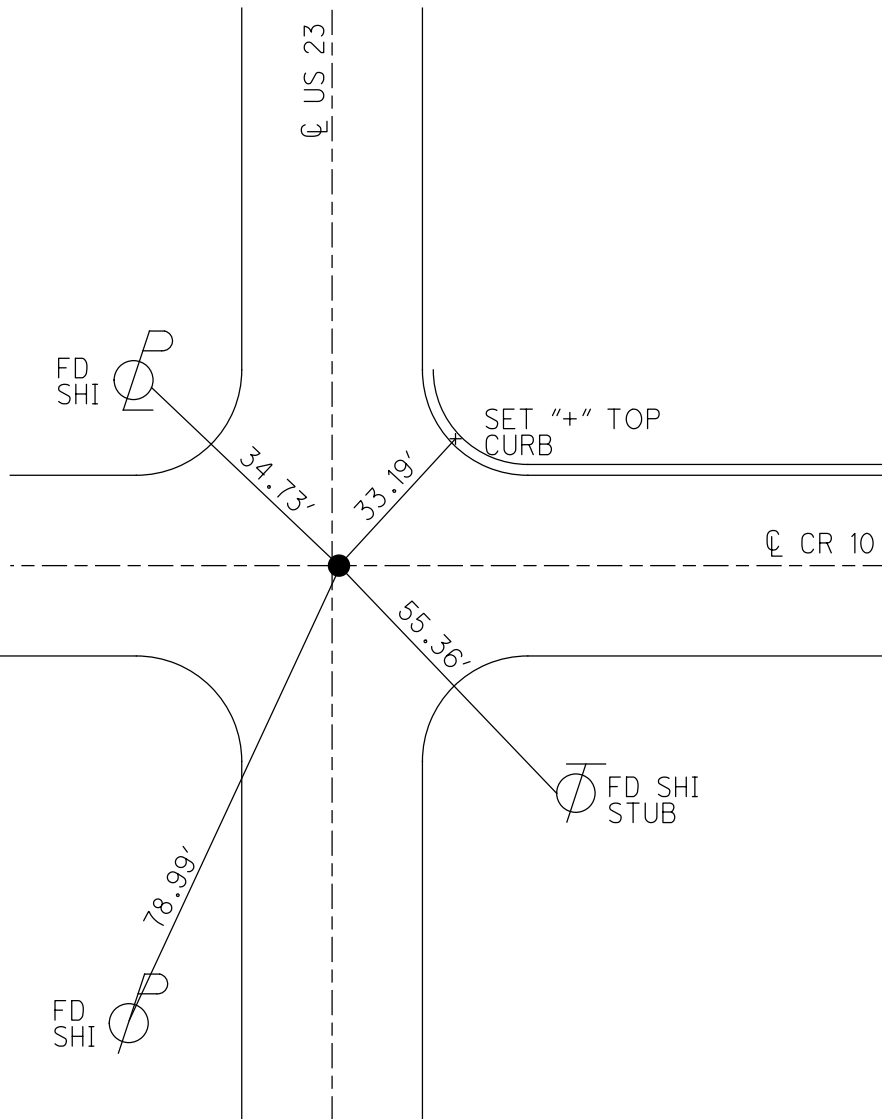
PERSONNEL _____ REFERENCE NO. 14 SHEET 15 OF 22
 NOTES O'DONNELL DATE 5/11/21 ROUTE US 23
 H.C. AUBLE WEATHER WINDY COUNTY SENECA
 R.C. NIESE TEMP. 50° TOWNSHIP BIG SPRING
 DWG BY RHOADES PID 109586 SECTION 7
 T 1 N R 13 E

TYPE MONUMENT P.K.NAIL
 ON SURFACE - ~~BELOW~~ ON _____
 OFFSET \perp PAVEMENT 0.3' ~~LT~~ : RT
 - TO - EDGE PAVEMENT 0.5' N. OF \perp CR 10
 STATION: 237+04.79



HORZ.DATUM: NAD83 2011 GEOID: NAVD88 2012A
 GRID: NORTHING: 505342.151 EASTING: 1719849.388

RECORD: P.I.
 STA. 237+04.79
 $\Delta = 0^\circ 54' \text{ LT}$
 FD R.R.SPIKE
 1955
 FD SM.R.R.SPIKE
 7/21/89, CL
 SET P.K./WASHER
 10/31/89, SWH
 FD P.K./WASHER
 9/01/09
 FD P.K. NAIL
 REF14
 4/15/19
 8/16/19
 5/11/21, JFO
 SET MAG/WASHER
 12/13/21, DSA
 FD MAG/WASHER
 CKREF14
 4/14/23, JAM

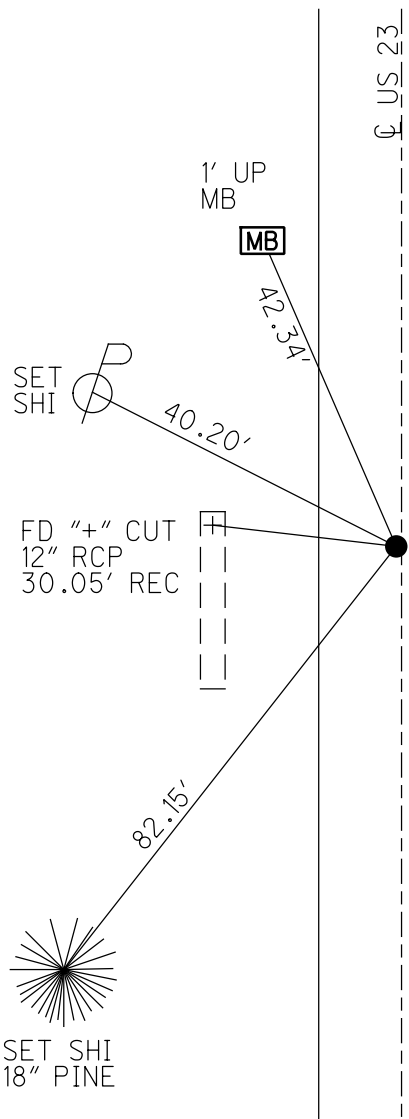
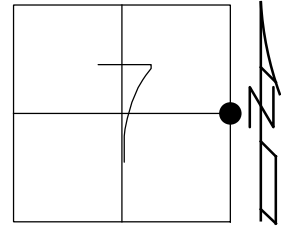


O.D.O.T. DISTRICT 2 SURVEY OFFICE (USE ONLY)

PERSONNEL _____ REFERENCE NO. 15 SHEET 16 OF 22
 NOTES O'DONNELL DATE 5/11/21 ROUTE US 23
 H.C. AUBLE WEATHER WINDY COUNTY SENECA
 R.C. NIESE TEMP. 50° TOWNSHIP BIG SPRING
 DWG BY RHOADES PID 109586 SECTION 7
 T 1 N R 13 E

TYPE MONUMENT SM.R.R.SPIKE
~~ON SURFACE~~ - BELOW 3 1/2"
 OFFSET \odot PAVEMENT 0.6' LT : ~~RT~~
11.2' TO LT. EDGE PAVEMENT
 STATION: 261+82

HORIZ.DATUM: NAD83 2011 GEOID: NAVD88 2012A
 GRID: NORTHING 507999.495 EASTING: 1719849.358



RECORD: P.I.
 STA. 263+63.70
 $\Delta = 0^\circ 01' RT$
 FD R.R.SPIKE
 ATOP STONE
 1955
 FD SM.R.R.SPIKE
 7/21/89, CL
 SET P.K./WASHER
 11/2/89, SWH
 FD P.K./WASHER
 9/01/09
 FD SM.R.R. SPIKE
 3 1/2" DOWN
 REF15
 4/15/19
 8/16/19
 5/11/21, JFO
 SET MAG/WASHER
 12/13/21, DSA
 FD MAG/WASHER
 CKREF16
 4/14/23, JAM

O.D.O.T. DISTRICT 2 SURVEY OFFICE (USE ONLY)

PERSONNEL

REFERENCE NO. 16

SHEET 17 OF 22

NOTES O'DONNELL

DATE 5/11/21

ROUTE US 23

H.C. AUBLE

WEATHER WINDY

COUNTY SENECA

R.C. NIESE

TEMP. 50°

TOWNSHIP BIG SPRING

SECTION 7

DWG BY RHOADES

PID 85264

T 1 N R 13 E

TYPE MONUMENT P.K.NAIL

ON SURFACE - ~~BELOW~~ ON

OFFSET CL PAVEMENT 0.6' LT : ~~RT~~

11.5' TO LT EDGE PAVEMENT

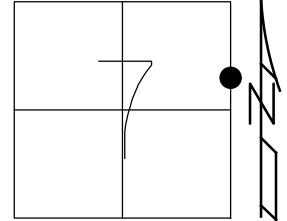
STATION: 272+83

HORZ.DATUM: NAD83 2011

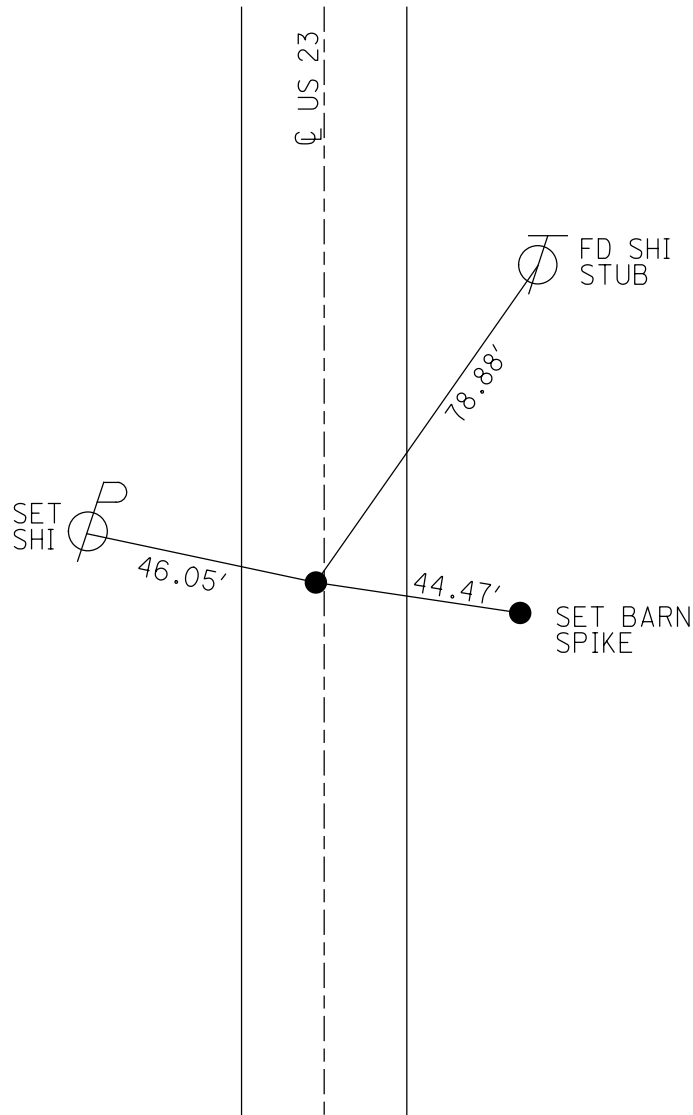
GEOID: NAVD88 2012A

GRID: NORTHING: 509096.001

EASTING: 1719849.455



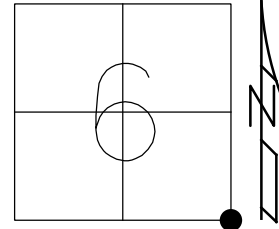
RECORD:
 STA. 274+59.15
 FD SM.R.R.SPIKE
 7/21/89, CL
 SET P.K./WASHER
 11/2/89, SWH
 P.K./WASHER
 9/01/09
 FD P.K. NAIL
 REF16
 4/15/19
 8/16/19
 5/11/21, JFO
 SET MAG/WASHER
 12/13/21, DSA



O.D.O.T. DISTRICT 2 SURVEY OFFICE (USE ONLY)

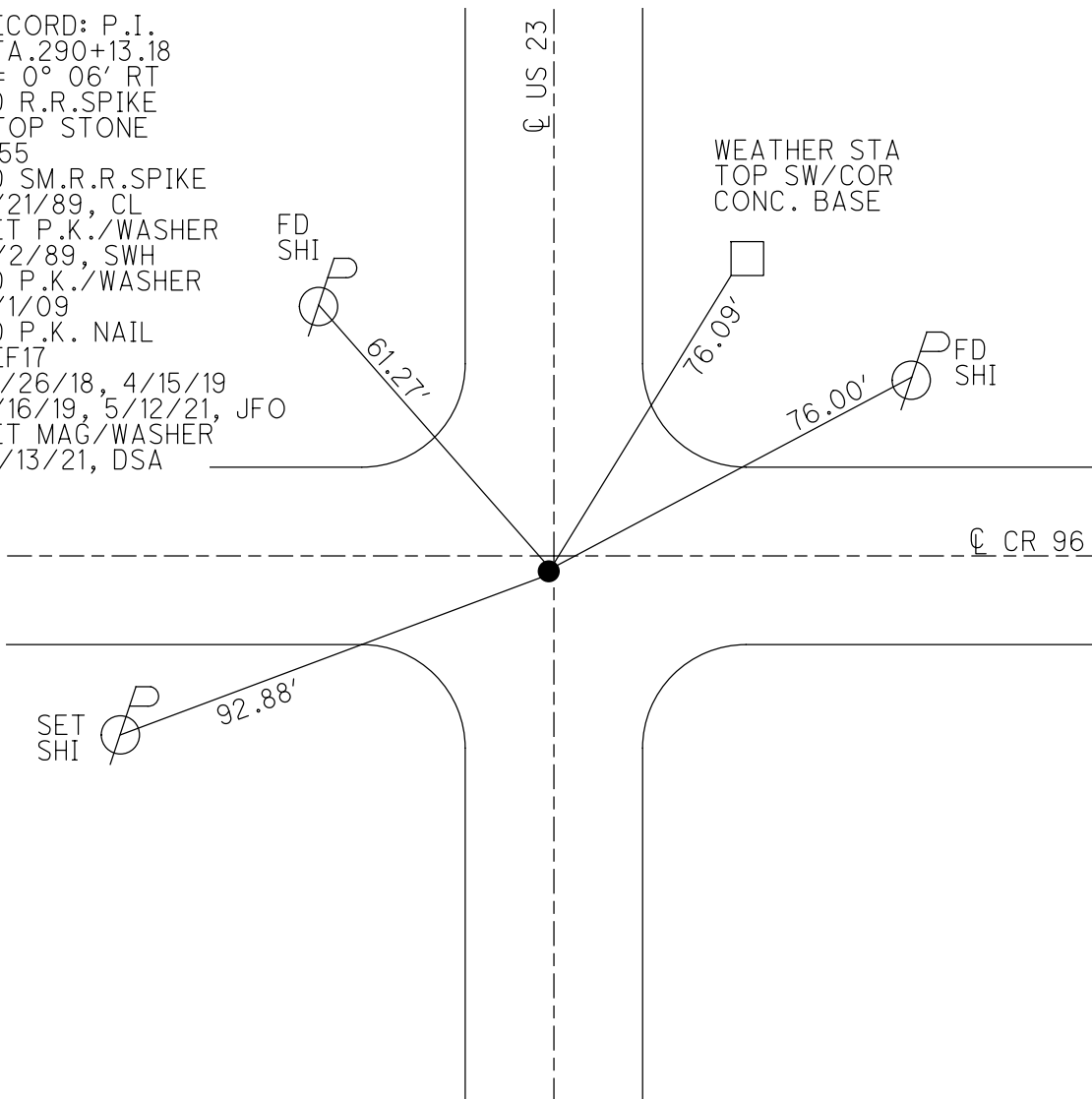
PERSONNEL _____ REFERENCE NO. 17 SHEET 18 OF 22
 NOTES O'DONNELL DATE 5/12/21 ROUTE US 23
 H.C. AUBLE WEATHER SUNNY COUNTY SENECA
 R.C. NIESE TEMP. 46° TOWNSHIP BIG SPRING
 DWG BY RHOADES PID 85264 SECTION 6
 T 1 N R 13 E

TYPE MONUMENT P.K./ WASHER
 ON SURFACE - ~~BELOW~~ ON
 OFFSET 0.8' LT : ~~RT~~
TO EDGE PAVEMENT 3.0' S. OF CR 96
 STATION: 290+13.18



HORZ.DATUM: NAD83 2011 GEOID: NAVD88 2012A
 GRID: NORTHING: 510648.969 EASTING: 1719849.431

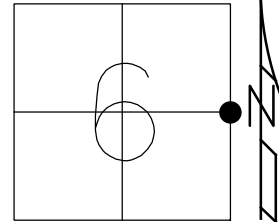
RECORD: P.I.
 STA. 290+13.18
 $\Delta = 0^\circ 06' RT$
 FD R.R.SPIKE
 ATOP STONE
 1955
 FD SM.R.R.SPIKE
 7/21/89, CL
 SET P.K./WASHER
 11/2/89, SWH
 FD P.K./WASHER
 9/1/09
 FD P.K. NAIL
 REF17
 10/26/18, 4/15/19
 8/16/19, 5/12/21, JFO
 SET MAG/WASHER
 12/13/21, DSA



O.D.O.T. DISTRICT 2 SURVEY OFFICE (USE ONLY)

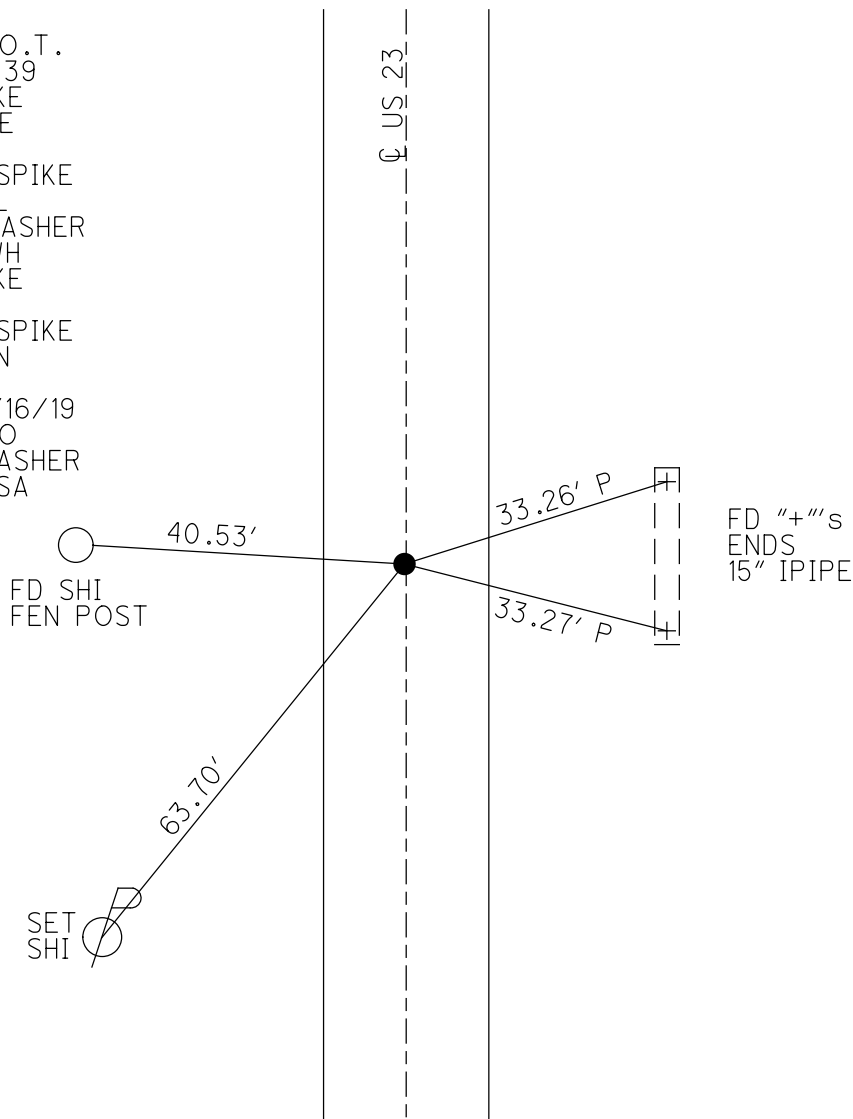
PERSONNEL _____ REFERENCE NO. 18 SHEET 19 OF 22
 NOTES O'DONNELL DATE 5/12/21 ROUTE US 23
 H.C. AUBLE WEATHER SUNNY COUNTY SENECA
 R.C. NIESE TEMP. 44° TOWNSHIP BIG SPRING
 DWG BY RHOADES PID 85264 SECTION 6
 T 1 N R 13 E

TYPE MONUMENT SM.R.R.SPIKE
 ON SURFACE - ~~BELOW~~ ON
 OFFSET Q PAVEMENT 0.2' LT : ~~RT~~
11.4' TO LT EDGE PAVEMENT
 STATION: 315+02



HORZ.DATUM: NAD83 2011 GEOID: NAVD88 2012A
 GRID: NORTHING: 513306.817 EASTING: 1719853.556

RECORD: P.O.T.
 STA 316+71.39
 FD R.R.SPIKE
 ATOP STONE
 1955
 FD SM.R.R.SPIKE
 7/21/89, CL
 SET P.K./WASHER
 11/2/89, SWH
 FD R.R.SPIKE
 9/01/09
 FD SM.R.R.SPIKE
 2 1/2" DOWN
 REF18
 4/15/19, 8/16/19
 5812/21, JFO
 SET MAG/WASHER
 12/13/21, DSA



O.D.O.T. DISTRICT 2 SURVEY OFFICE (USE ONLY)

PERSONNEL

REFERENCE NO. 19

SHEET 20 OF 22

NOTES O'DONNELL

DATE 5/12/21

ROUTE US 23

H.C. AUBLE

WEATHER SUNNY

COUNTY SENECA

R.C. NIESE

TEMP. 44°

TOWNSHIP BIG SPRING

SECTION 6

DWG BY RHOADES

PID 85264

T 1 N R 13 E

TYPE MONUMENT P.K.NAIL

ON ~~SURFACE~~ - BELOW 3"

OFFSET \varnothing PAVEMENT 0.6' LT : ~~RT~~

12.5' TO RT. EDGE PAVEMENT

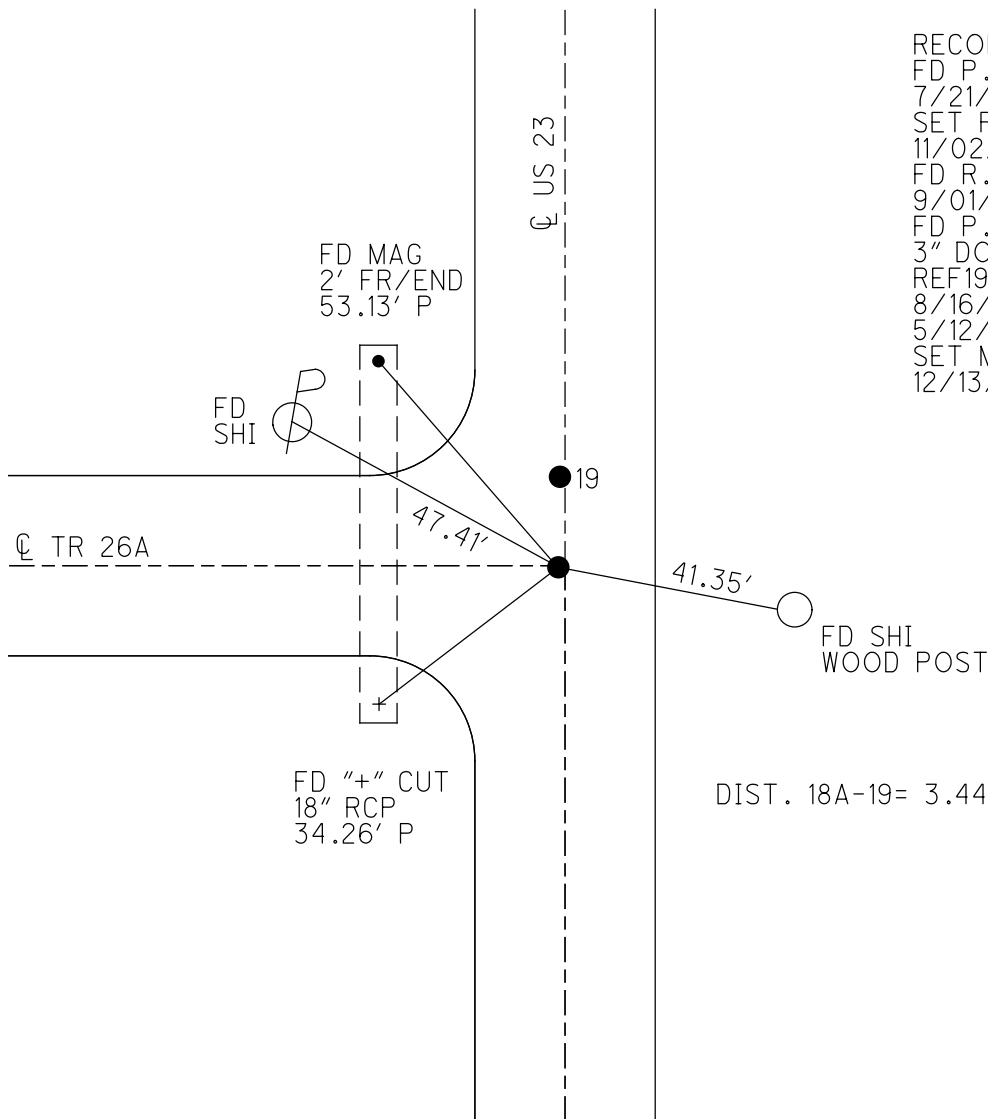
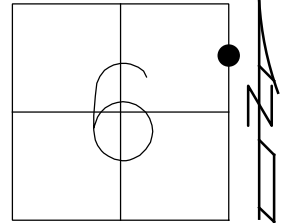
STATION: 330+24.06

HORZ.DATUM: NAD83 2011

GEOID: NAVD88 2012A

GRID: NORTHING: 514659.613

EASTING: 1719856.063

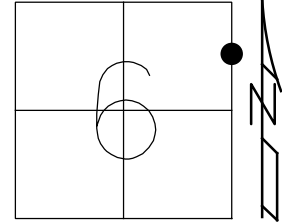


RECORD:
 FD P.K.NAIL
 7/21/89, CL
 SET P.K./WASHER
 11/02/89, SWH
 FD R.R.SPIKE
 9/01/09
 FD P.K.NAIL
 3" DOWN
 REF19
 8/16/19
 5/12/21, JFO
 SET MAG/WASHER
 12/13/21, DSA

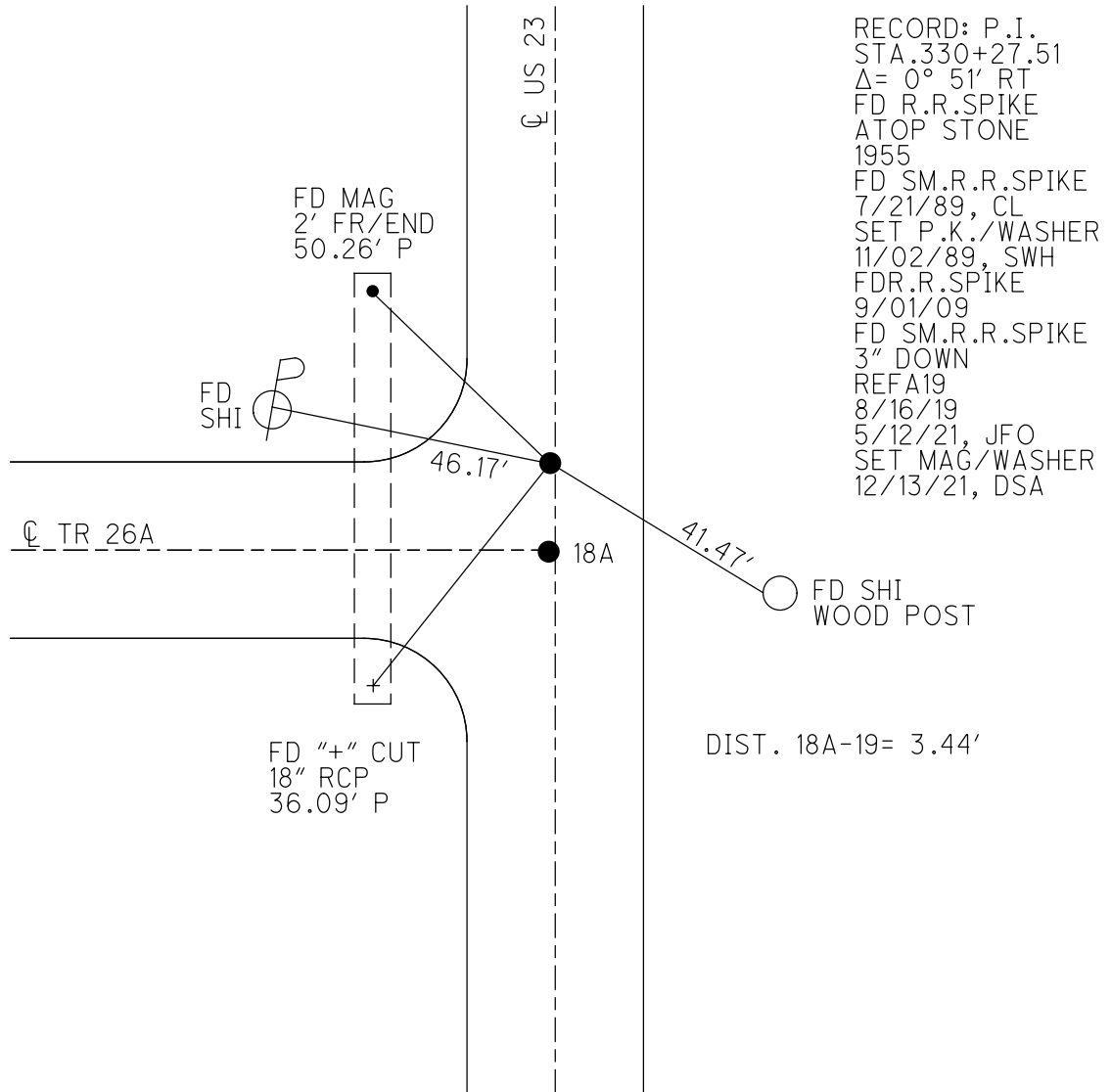
O.D.O.T. DISTRICT 2 SURVEY OFFICE (USE ONLY)

PERSONNEL _____ REFERENCE NO. 19 A SHEET 21 OF 22
 NOTES O'DONNELL DATE 5/12/21 ROUTE US 23
 H.C. AUBLE WEATHER SUNNY COUNTY SENECA
 R.C. NIESE TEMP. 43° TOWNSHIP BIG SPRING
 DWG BY RHOADES PID 85264 SECTION 6
 T 1 N R 13 E

TYPE MONUMENT SM.R.R.SPIKE
 ON ~~SURFACE~~ - BELOW 3"
 OFFSET Q PAVEMENT 0.6' LT : ~~RT~~
 - TO - EDGE PAVEMENT
 STATION: 330+27.51



HORIZ.DATUM: NAD83 2011 GEOID: NAVD88 2012A
 GRID: NORTHING: 514663.066 EASTING: 1719856.110



RECORD: P.I.
 STA. 330+27.51
 $\Delta = 0^\circ 51' \text{ RT}$
 FD R.R.SPIKE
 ATOP STONE
 1955
 FD SM.R.R.SPIKE
 7/21/89, CL
 SET P.K./WASHER
 11/02/89, SWH
 FDR.R.SPIKE
 9/01/09
 FD SM.R.R.SPIKE
 3" DOWN
 REFA19
 8/16/19
 5/12/21, JFO
 SET MAG/WASHER
 12/13/21, DSA

DIST. 18A-19= 3.44'

O.D.O.T. DISTRICT 2 SURVEY OFFICE (USE ONLY)

PERSONNEL

REFERENCE NO. 20

SHEET 22 OF 22

NOTES LOEHRKE

DATE 7/21/89

ROUTE US 23

H.C. HOFFMAN

WEATHER HAZY

COUNTY SENECA

R.C. BARNHISEL

TEMP. 80°

TOWNSHIP BIG SPRING

SECTION 6

DWG BY NASON

PID PT-SEN19

T 1 N R 13 E

TYPE MONUMENT SM. R.R. SPIKE

ON SURFACE - ~~BELOW~~ ON

OFFSET CL PAVEMENT ON LT : RT

- TO - EDGE PAVEMENT

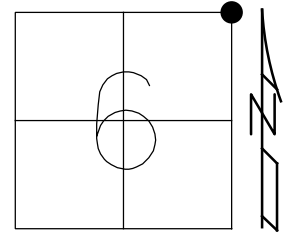
STATION: 343+86.67

HORIZ. DATUM: _____

GEOID: _____

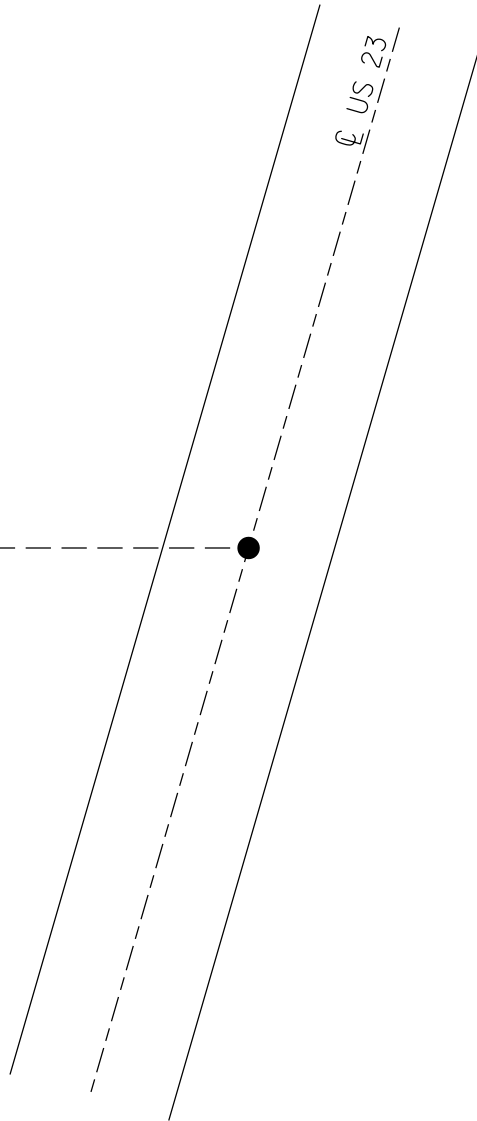
GRID: NORTHING: _____

EASTING: _____



RECORD: P.I.
STA. 343+86.67
 $\Delta = 2^\circ 24' \text{ LT}$
FD SM.R.R. SPIKE
7/21/89, CL
SET P.K./WASHER
11/02/89, SWH
FD R.R. SPIKE
9/01/09
D.N.F.
10/26/18, JMR
4/15/19, JFO

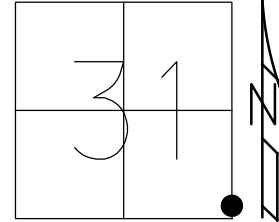
LOUDEN TWP.
BIG SPRING TWP.



O.D.O.T. DISTRICT 2 SURVEY OFFICE (USE ONLY)

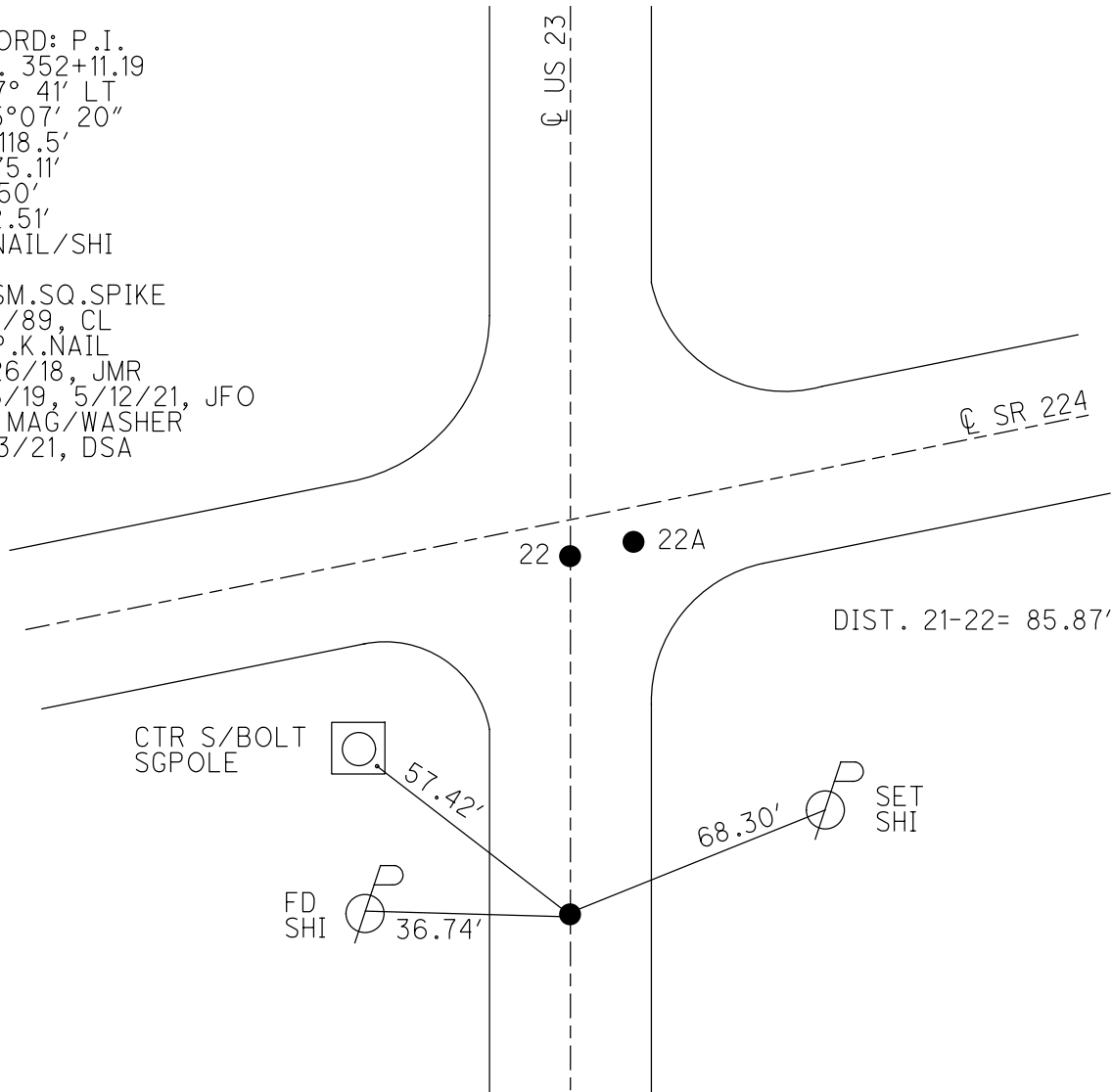
PERSONNEL _____ REFERENCE NO. 21 SHEET 1 OF 17
 NOTES O'DONNELL DATE 5/12/21 ROUTE US 23
 H.C. AUBLE WEATHER SUNNY COUNTY SENECA
 R.C. NIESE TEMP. 43° TOWNSHIP LOUDON
 DWG BY RHOADES PID 85264 SECTION 31
 T 2 N R 13 E

TYPE MONUMENT P.K.NAIL
 ON SURFACE - ~~BELOW~~ ON _____
 OFFSET CL PAVEMENT ON _____ LT : RT
12.2' TO RT EDGE PAVEMENT
 STATION: 352+11.19



HORIZ.DATUM: NAD83 2011 GEOID: 2012A
 GRID: NORTHING: 516831.242 EASTING: 1720073.291

RECORD: P.I.
 STA. 352+11.19
 $\Delta = 7^\circ 41' \text{ LT}$
 $D = 5^\circ 07' 20''$
 $R = 1118.5'$
 $T = 75.11'$
 $L = 150'$
 $E = 2.51'$
 FD NAIL/SHI
 1955
 FD SM.SQ.SPIKE
 7/21/89, CL
 FD P.K.NAIL
 10/26/18, JMR
 8/16/19, 5/12/21, JFO
 SET MAG/WASHER
 12/13/21, DSA



O.D.O.T. DISTRICT 2 SURVEY OFFICE (USE ONLY)

PERSONNEL

REFERENCE NO. 22

SHEET 2 OF 17

NOTES O'DONNELL

DATE 5/12/21

ROUTE US 23

H.C. AUBLE

WEATHER SUNNY

COUNTY SENECA

R.C. NIESE

TEMP. 43°

TOWNSHIP LOUDON

SECTION 31

DWG BY RHOADES

PID 85264

T 2 N R 13 E

TYPE MONUMENT MAG/WASHER

ON SURFACE - ~~BELOW~~ ON

OFFSET \odot PAVEMENT ON LT : RT

- TO - EDGE PAVEMENT 4.5' S OF US 224

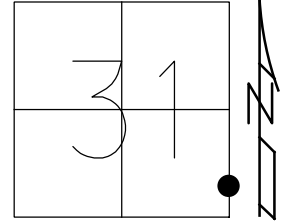
STATION: 352+96.87

HORZ.DATUM: NAD83 2011

GEOID: 2012A

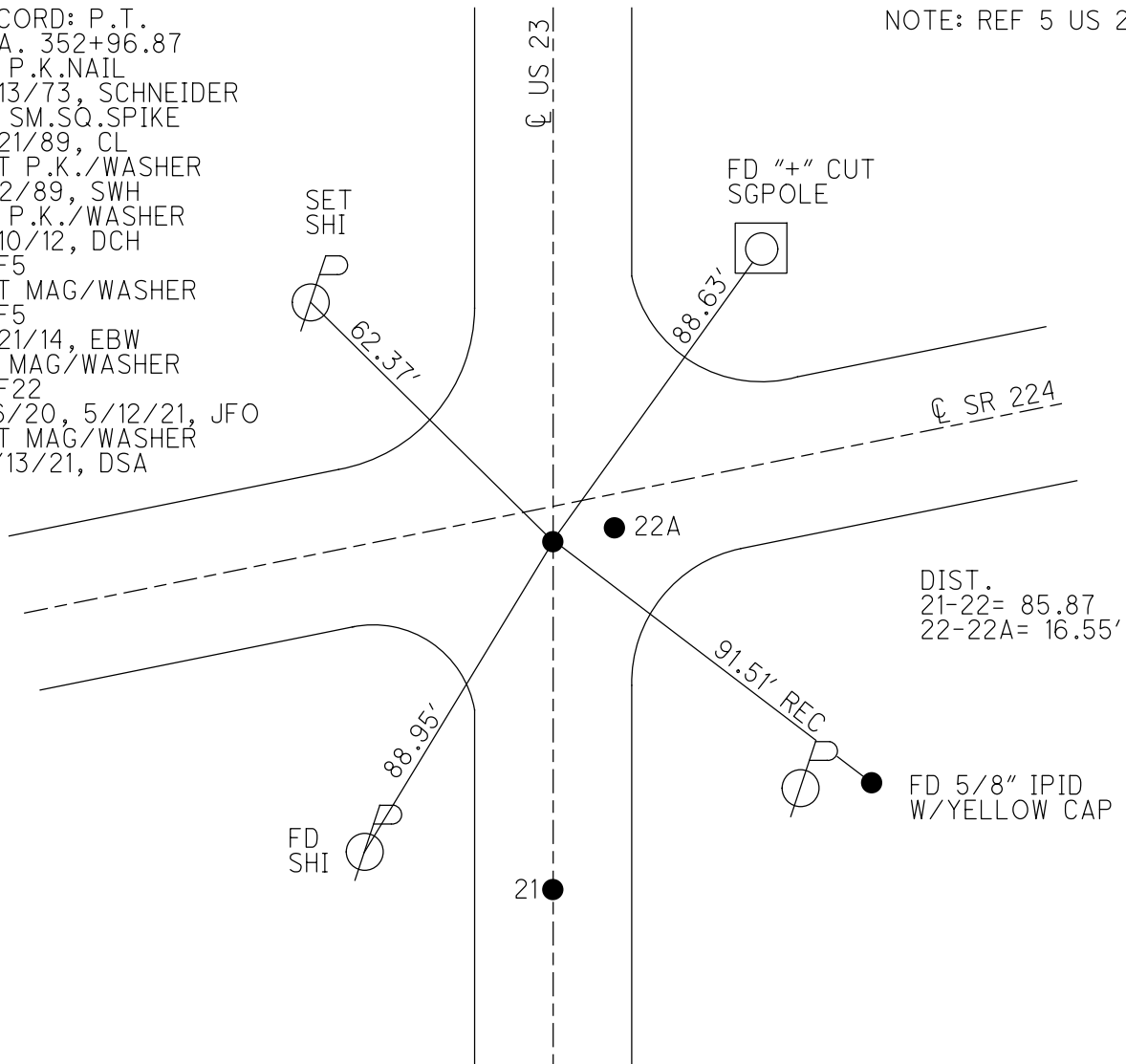
GRID: NORTHING: 516917.104

EASTING: 1720073.295



RECORD: P.T.
 STA. 352+96.87
 FD P.K.NAIL
 3/13/73, SCHNEIDER
 FD SM.SQ.SPIKE
 7/21/89, CL
 SET P.K./WASHER
 11/2/89, SWH
 FD P.K./WASHER
 2/10/12, DCH
 REF5
 SET MAG/WASHER
 REF5
 5/21/14, EBW
 FD MAG/WASHER
 REF22
 1/6/20, 5/12/21, JFO
 SET MAG/WASHER
 12/13/21, DSA

NOTE: REF 5 US 224



DIST.
 21-22= 85.87
 22-22A= 16.55'

O.D.O.T. DISTRICT 2 SURVEY OFFICE (USE ONLY)

PERSONNEL

REFERENCE NO. 22 A

SHEET 1 OF 17

NOTES O'DONNELL

DATE 5/12/21

ROUTE US 23

H.C. AUBLE

WEATHER SUNNY

COUNTY SENECA

R.C. NIESE

TEMP. 43°

TOWNSHIP LOUDON

SECTION 31

DWG BY RHOADES

PID 85264

T 2 N R 13 E

TYPE MONUMENT MAG/WASHER

ON SURFACE - ~~BELOW~~ ON

OFFSET CL PAVEMENT 16.5' ~~LT~~ : RT

- TO - EDGE PAVEMENT

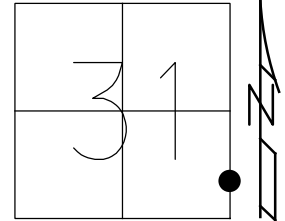
STATION: 352+96.87

HORZ.DATUM: NAD83 2011

GEOID: 2012A

GRID: NORTHING: 516918.349

EASTING: 1720089.797



RECORD: US 224 P.I.

$\Delta = 5^{\circ} 05' RT$

FD SM.R.R.SPIKE

11/26/63, EK

FD SM.SQ.SPIKE

7/21/89, CL

SET P.K./WASHER

11/2/89, SWH

FD P.K.SHANK

2/10/12, DCH

REF6

SET MAG/WASHER

REFA5

5/21/14, EBW

FD MAG/WASHER

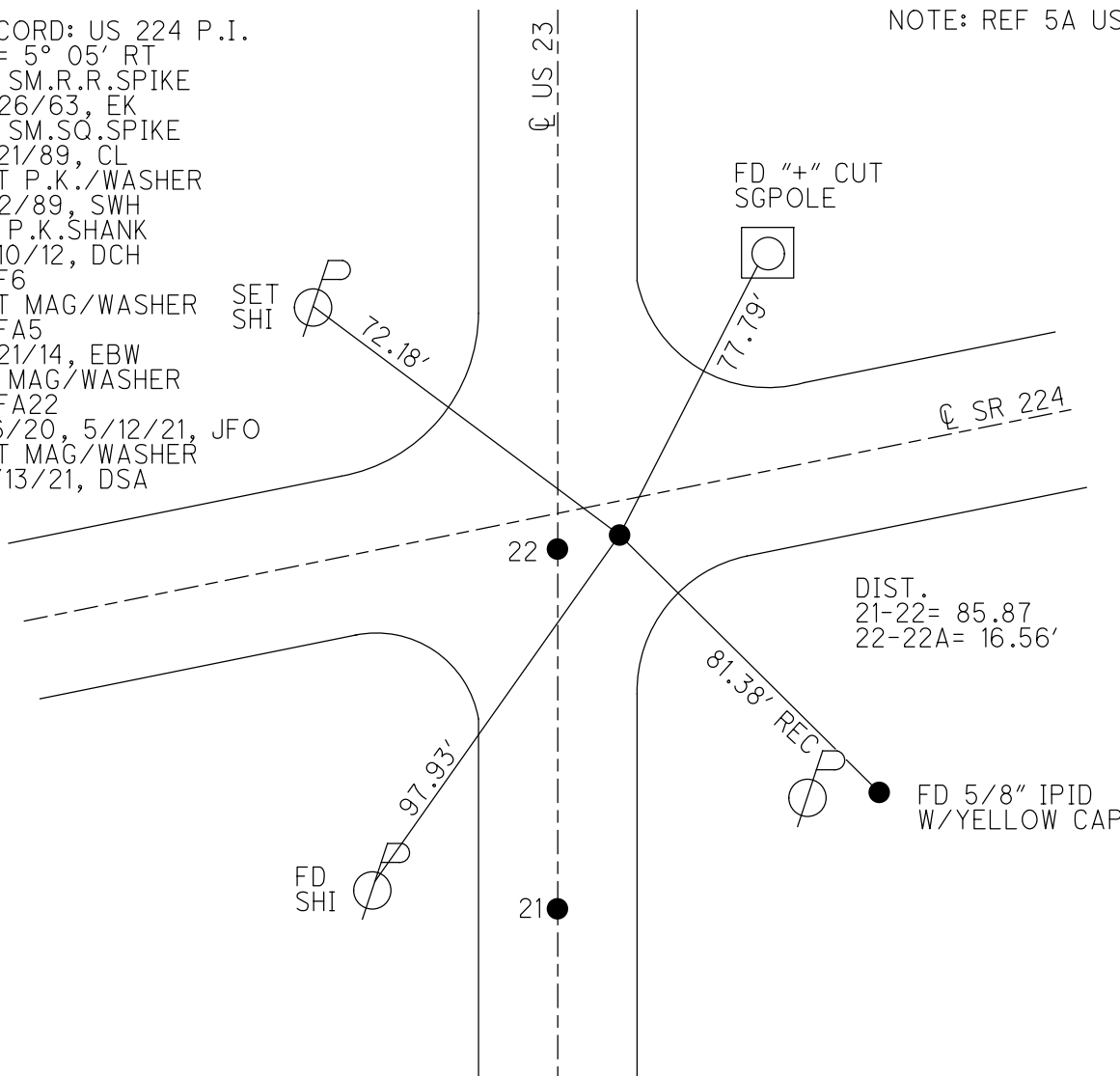
REFA22

1/6/20, 5/12/21, JFO

SET MAG/WASHER

12/13/21, DSA

NOTE: REF 5A US 224



O.D.O.T. DISTRICT 2 SURVEY OFFICE (USE ONLY)

PERSONNEL

REFERENCE NO. 23

SHEET 4 OF 17

NOTES O'DONNELL

DATE 5/12/21

ROUTE US 23

H.C. AUBLE

WEATHER SUNNY

COUNTY SENECA

R.C. NIESE

TEMP. 51°

TOWNSHIP LOUDON

SECTION 31

DWG BY RHOADES PID 85264

T 2 N R 13 E

TYPE MONUMENT P.K.NAIL

ON SURFACE - ~~BELOW~~ ON

OFFSET \odot PAVEMENT 0.4' LT : ~~RT~~

11.4' TO LT EDGE PAVEMENT

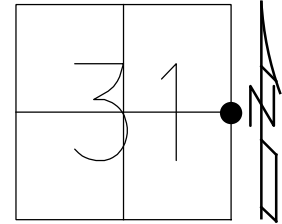
STATION: 370+41.19

HORZ.DATUM: NAD83 2011

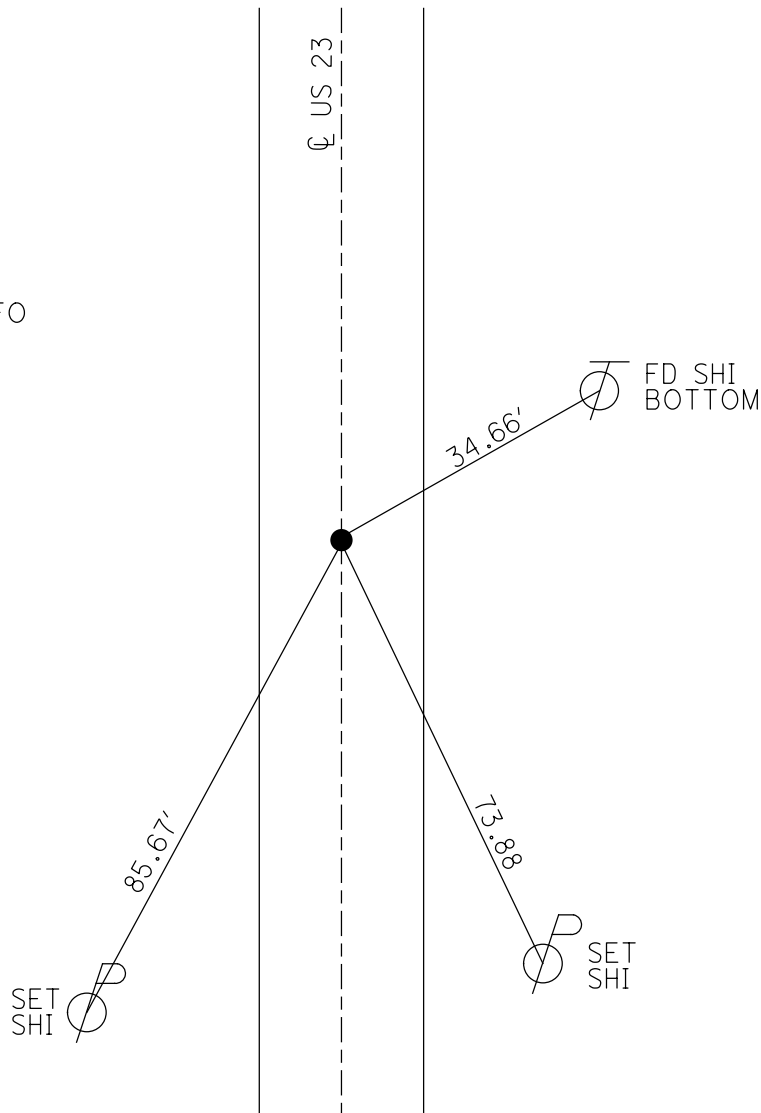
GEOID: 2012A

GRID: NORTHING: 518661.705

EASTING: 1720074.159



RECORD: P.I.
 STA. 370+41.19
 $\Delta = 0^\circ 03' RT$
 FD SM.R.R.SPIKE
 7/21/89, CL
 SET P.K./WASHER
 9/3/89, SWH
 FD P.K.NAIL
 REF23
 10/26/18, JMR
 8/16/19, 5/12/21, JFO
 SET MAG/WASHER
 12/13/21, DSA



O.D.O.T. DISTRICT 2 SURVEY OFFICE (USE ONLY)

PERSONNEL

REFERENCE NO. 24

SHEET 5 OF 17

NOTES O'DONNELL

DATE 5/12/21

ROUTE US 23

H.C. AUBLE

WEATHER SUNNY

COUNTY SENECA

R.C. NIESE

TEMP. 50°

TOWNSHIP LOUDON

SECTION 30

DWG BY RHOADES

PID 85264

T 2 N R 13 E

TYPE MONUMENT SM.R.R.SPIKE

~~ON SURFACE~~ - BELOW 3"

OFFSET C PAVEMENT ON LT : RT

- TO - EDGE PAVEMENT 1.5' S OF C CR 108

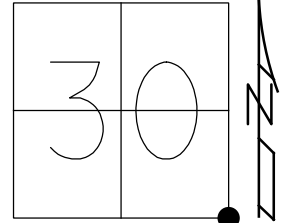
STATION: 396+88.69

HORZ.DATUM: NAD83 2011

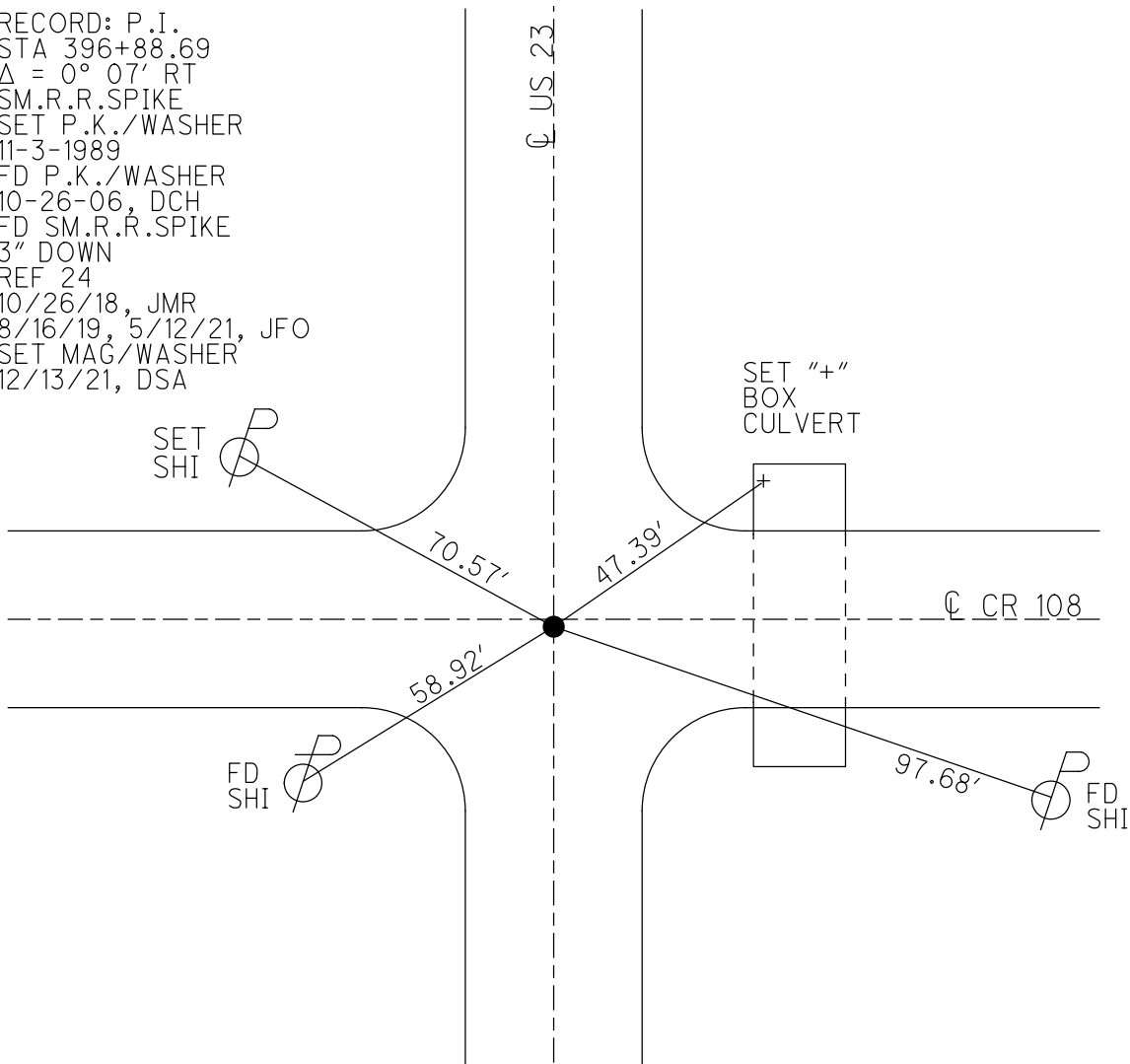
GEOID: 2012A

GRID: NORTHING: 521308.864

EASTING: 1720077.919



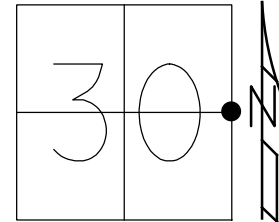
RECORD: P.I.
 STA 396+88.69
 $\Delta = 0^\circ 07' \text{ RT}$
 SM.R.R.SPIKE
 SET P.K./WASHER
 11-3-1989
 FD P.K./WASHER
 10-26-06, DCH
 FD SM.R.R.SPIKE
 3" DOWN
 REF 24
 10/26/18, JMR
 8/16/19, 5/12/21, JFO
 SET MAG/WASHER
 12/13/21, DSA



O.D.O.T. DISTRICT 2 SURVEY OFFICE (USE ONLY)

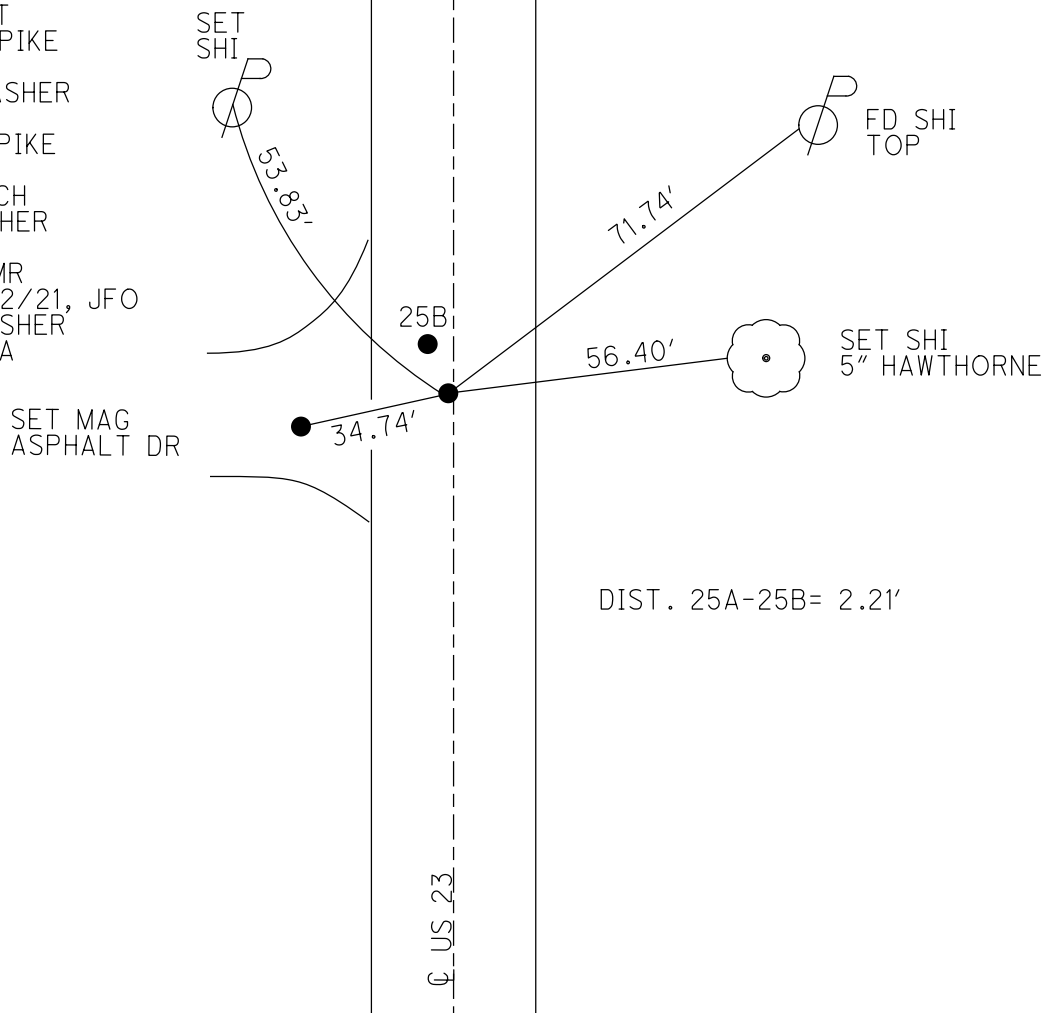
PERSONNEL _____ REFERENCE NO. 25 A SHEET 6 OF 17
 NOTES O'DONNELL DATE 5/12/21 ROUTE US 23
 H.C. AUBLE WEATHER SUNNY COUNTY SENECA
 R.C. NIESE TEMP. 50° TOWNSHIP LOUDON
 DWG BY RHOADES PID 85264 SECTION 30
 T 2 N R 13 E

TYPE MONUMENT MAG/WASHER
 ON SURFACE - ~~BELOW~~ ON
 OFFSET ☐ PAVEMENT 0.4' LT : RT
11.4' TO LT EDGE PAVEMENT
 STATION: 423+38.99



HORZ. DATUM: NAD83 2011 GEOID: 2012A
 GRID: NORTHING: 523958.427 EASTING: 1720087.007

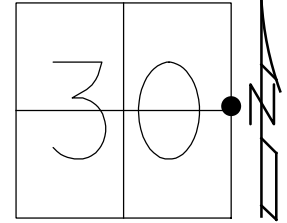
RECORD: P.I.
 STA 423+38.99
 $\Delta = 0^\circ 05' \text{ LT}$
 FD SM.R.R.SPIKE
 7-4-89
 SET P.K./WASHER
 11-3-89
 FD LG.R.R.SPIKE
 11" DOWN
 10-25-06, DCH
 FD MAG/WASHER
 REFA25
 10/26/18, JMR
 8/16/19, 5/12/21, JFO
 SET MAG/WASHER
 12/13/21, DSA



O.D.O.T. DISTRICT 2 SURVEY OFFICE (USE ONLY)

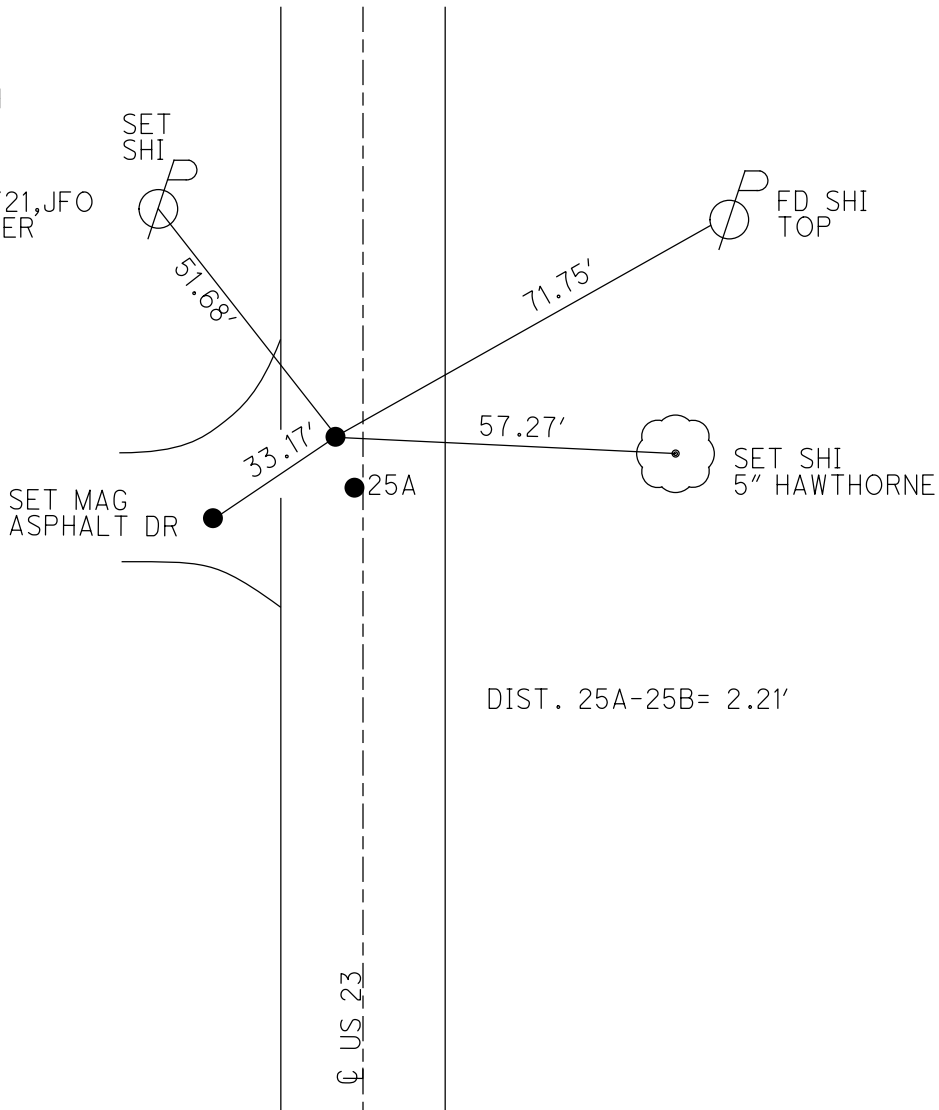
PERSONNEL _____ REFERENCE NO. 25 B SHEET 7 OF 17
 NOTES O'DONNELL DATE 5/12/21 ROUTE US 23
 H.C. AUBLE WEATHER SUNNY COUNTY SENECA
 R.C. NIESE TEMP. 50° TOWNSHIP LOUDON
 SECTION 30
 DWG BY RHOADES PID 85264 T 2 N R 13 E

TYPE MONUMENT MAG NAIL
 ON SURFACE - ~~BELOW~~ ON
 OFFSET ☐ PAVEMENT 2.0' LT : RT
- TO - EDGE PAVEMENT
 STATION: 422+06 7.99



HORIZ.DATUM: NAD83 2011 GEOID: 2012A
 GRID: NORTHING: 523959.615 EASTING: 1720085.117

RECORD:
 FD MAG NAIL
 10/25/06, DCH
 FD MAG NAIL
 REFB25
 10/26/18, JMR
 8/16/19, 5/12/21, JFO
 SET MAG/WASHER
 12/13/21, DSA



O.D.O.T. DISTRICT 2 SURVEY OFFICE (USE ONLY)

PERSONNEL _____ REFERENCE NO. 26 SHEET 8 OF 17

NOTES O'DONNELL DATE 5/12/21 ROUTE US 23

H.C. AUBLE WEATHER SUNNY COUNTY SENECA

R.C. NIESE TEMP. 50° TOWNSHIP LOUDON

DWG BY RHOADES PID 85264 SECTION 19

T 2 N R 13 E

TYPE MONUMENT P.K.NAIL

ON ~~SURFACE~~ - BELOW 1"

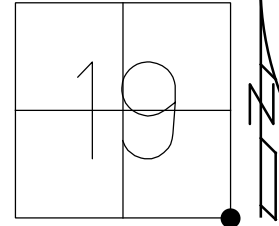
OFFSET \varnothing PAVEMENT 0.9' LT : RT

- TO - EDGE PAVEMENT

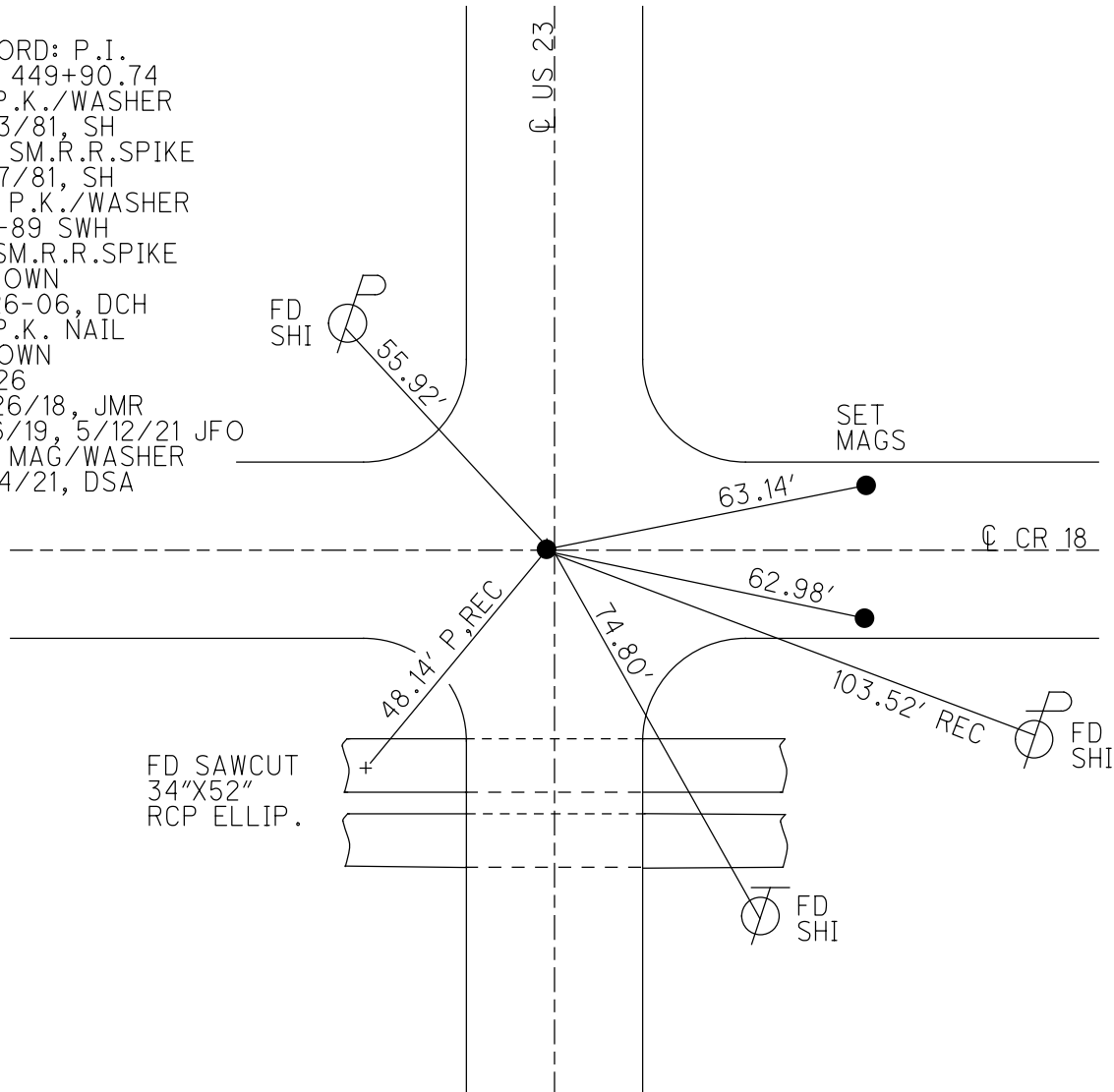
STATION: 449+90.74

HORZ.DATUM: NAD83 2011 GEOID: 2012A

GRID: NORTHING: 526610.193 EASTING: 1720091.863



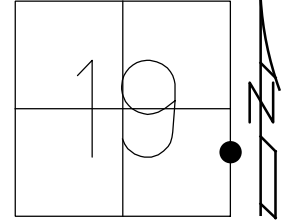
RECORD: P.I.
 STA 449+90.74
 FD P.K./WASHER
 6/23/81, SH
 SET SM.R.R.SPIKE
 8/27/81, SH
 SET P.K./WASHER
 11-3-89 SWH
 FD SM.R.R.SPIKE
 3" DOWN
 10-26-06, DCH
 FD P.K. NAIL
 1" DOWN
 REF26
 10/26/18, JMR
 8/16/19, 5/12/21 JFO
 SET MAG/WASHER
 12/14/21, DSA



O.D.O.T. DISTRICT 2 SURVEY OFFICE (USE ONLY)

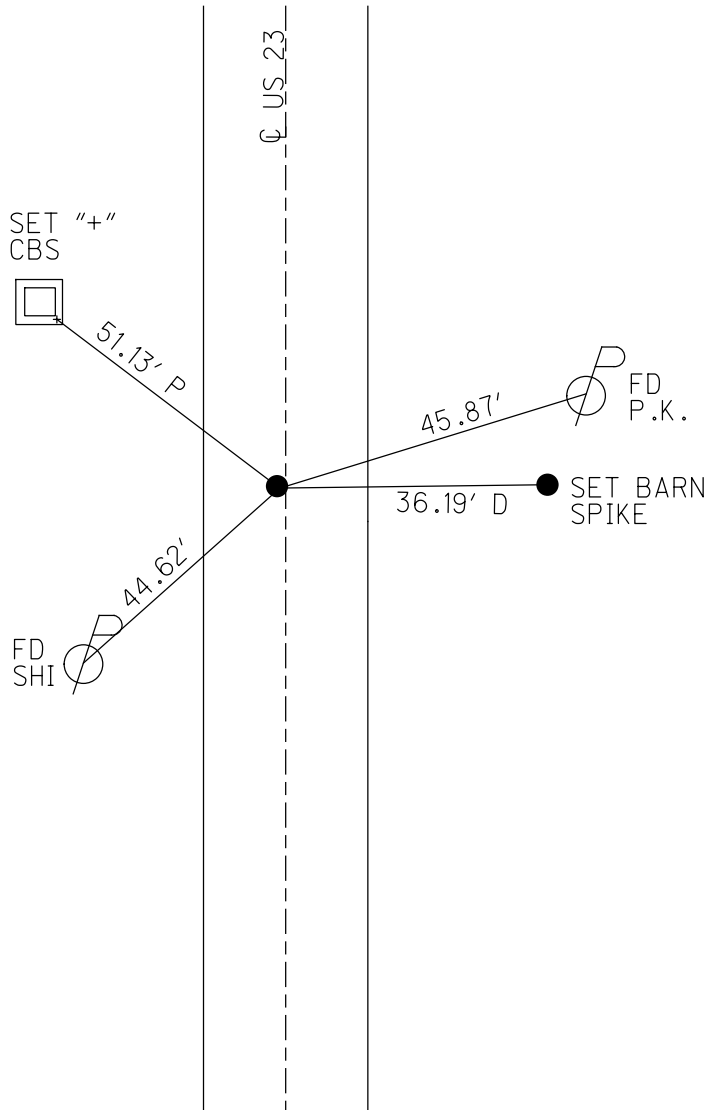
PERSONNEL _____ REFERENCE NO. 27 SHEET 9 OF 17
 NOTES O'DONNELL DATE 5/12/21 ROUTE US 23
 H.C. AUBLE WEATHER SUNNY COUNTY SENECA
 R.C. NIESE TEMP. 50° TOWNSHIP LOUDON
 DWG BY RHOADES PID 85264 SECTION 19
 T 2 N R 19 E

TYPE MONUMENT P.K./WASHER
 ON SURFACE - ~~BELOW~~ ON
 OFFSET Q PAVEMENT 0.3' LT : ~~RT~~
11.6' TO LT EDGE PAVEMENT
 STATION: 462+86.19



HORIZ.DATUM: NAD83 2011 GEOID: 2012A
 GRID: NORTHING: 527905.741 EASTING: 1720094.713

RECORD: P.I.
 STA 462.86.19
 $\Delta = 0^\circ 13' RT$
 FD SM.R.R.SPIKE
 7/24/89, CL
 SET P.K./WASHER
 11-3-1989, SWH
 FD P.K.NAIL
 10-26-06, DCH
 FD P.K./WASHER
 REF27
 10/26/18, JMR
 8/16/19
 5/12/21, JFO
 SET MAG/WASHER
 12/14/21, DSA



O.D.O.T. DISTRICT 2 SURVEY OFFICE (USE ONLY)

PERSONNEL

REFERENCE NO. 28

SHEET 10 OF 17

NOTES O'DONNELL

DATE 5/12/21

ROUTE US 23

H.C. AUBLE

WEATHER SUNNY

COUNTY SENECA

R.C. NIESE

TEMP. 50°

TOWNSHIP LOUDON

DWG BY RHOADES

PID 85264

SECTION 19

T 2 N R 13 E

TYPE MONUMENT P.K./WASHER

ON SURFACE - ~~BELOW~~ ON

OFFSET Q PAVEMENT ON LT : RT

11.8' TO LT EDGE PAVEMENT

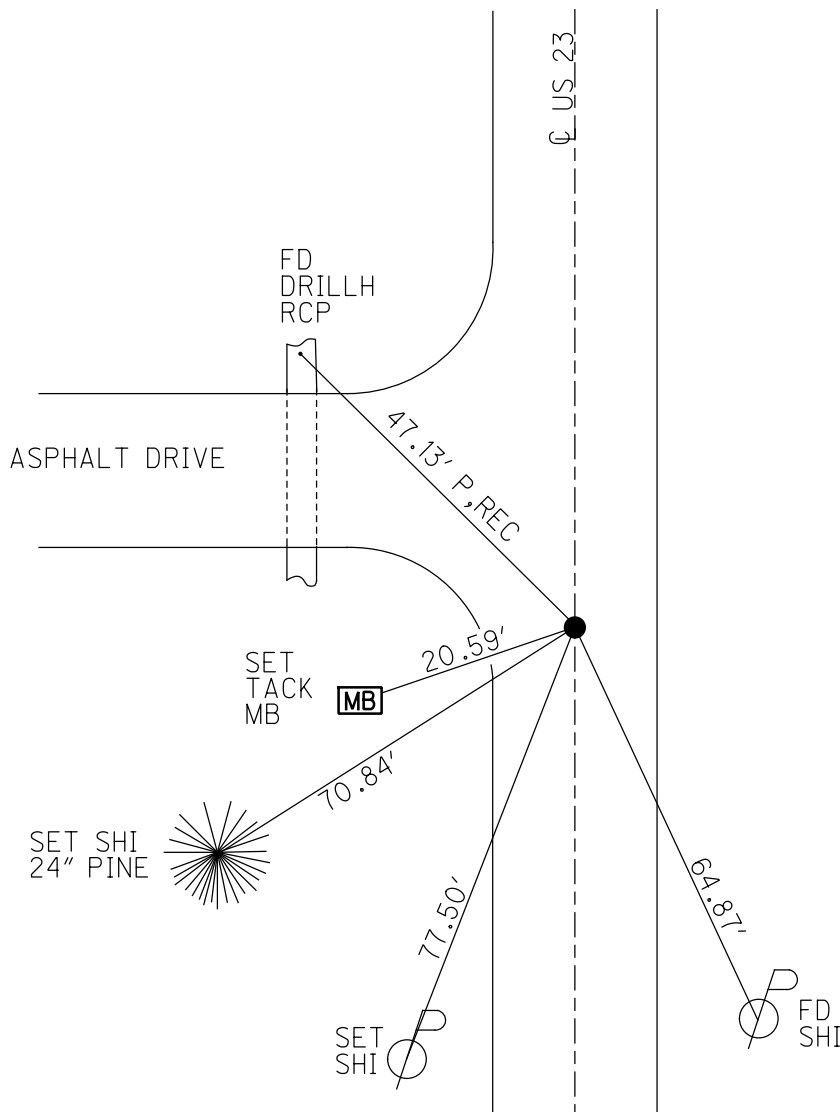
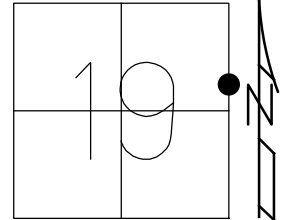
STATION: 476+86.19

HORZ.DATUM: NAD83 2011

GEOID: 2012A

GRID: NORTHING: 529305.904

EASTING: 1720102.357

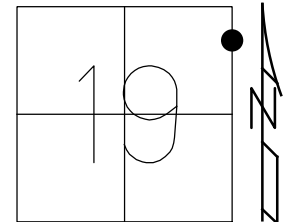


RECORD: P.I.
 STA 476+86.19
 $\Delta = 0^\circ 3' \text{ LT}$
 FD SM.R.R.SPIKE
 7/24/89, CL
 SET P.K./WASHER
 11-3-1989, SWH
 FD P.K./WASHER
 10-26-06
 FD P.K./WASHER
 REF28
 10/26/18, JMR
 8/16/19, 5/12/21 JFO
 SET MAG/WASHER
 12/14/21, DSA

O.D.O.T. DISTRICT 2 SURVEY OFFICE (USE ONLY)

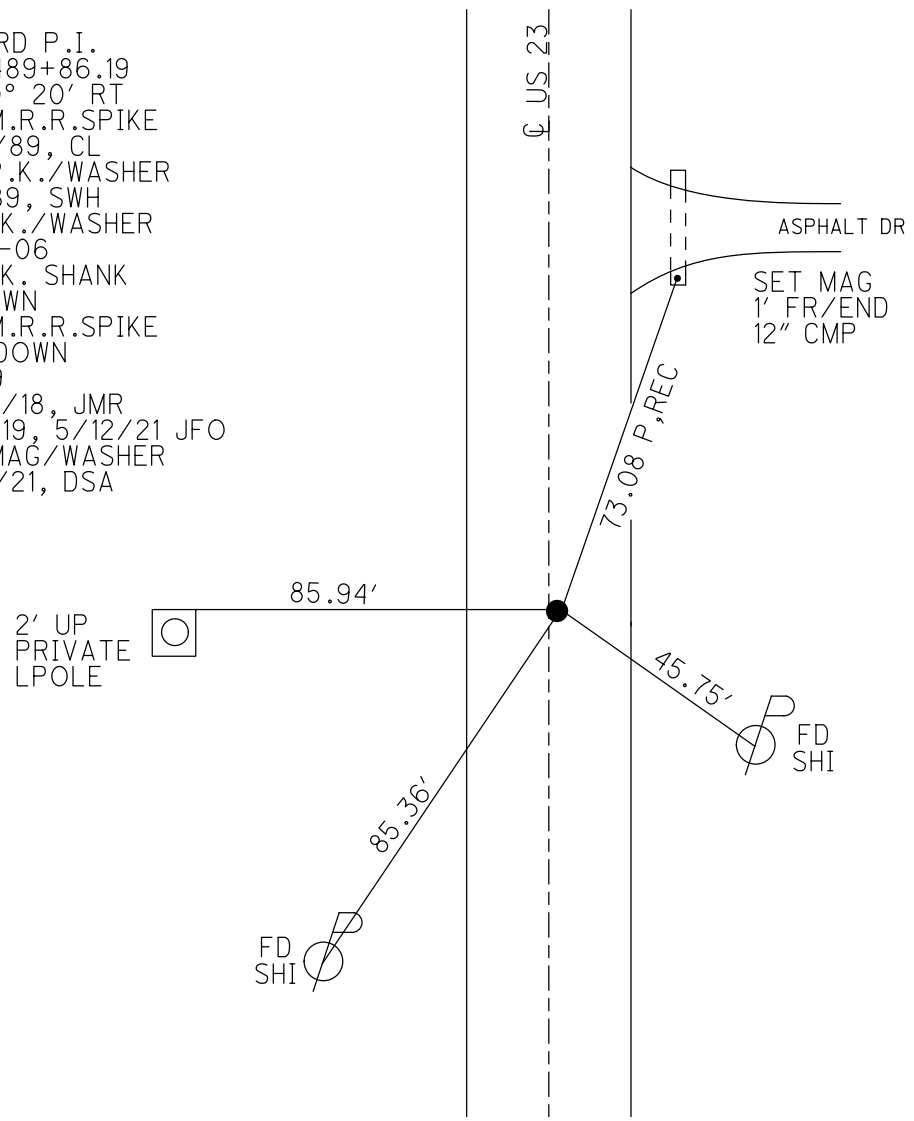
PERSONNEL _____ REFERENCE NO. 29 SHEET 11 OF 17
 NOTES O'DONNELL DATE 5/12/21 ROUTE US 23
 H.C. AUBLE WEATHER SUNNY COUNTY SENECA
 R.C. NIESE TEMP. 58° TOWNSHIP LOUDON
 DWG BY RHOADES PID 85264 SECTION 19
 T 2 N R 13 E

TYPE MONUMENT SM.R.R.SPIKE
~~ON SURFACE~~ - BELOW 3.5"
 OFFSET \oslash PAVEMENT 0.2' ~~LT~~ : RT
11.4' TO RT EDGE PAVEMENT
 STATION: 488+86.19



HORZ.DATUM: NAD83 2011 GEOID: 2012A
 GRID: NORTHING: 530605.999 EASTING: 1720112.594

RECORD P.I.
 STA 489+86.19
 $\Delta = 0^\circ 20' RT$
 FD SM.R.R.SPIKE
 7/24/89, CL
 SET P.K./WASHER
 11-3-89, SWH
 FD P.K./WASHER
 10-26-06
 FD P.K. SHANK
 3" DOWN
 FD SM.R.R.SPIKE
 3.5" DOWN
 REF29
 10/26/18, JMR
 8/16/19, 5/12/21 JFO
 SET MAG/WASHER
 12/14/21, DSA

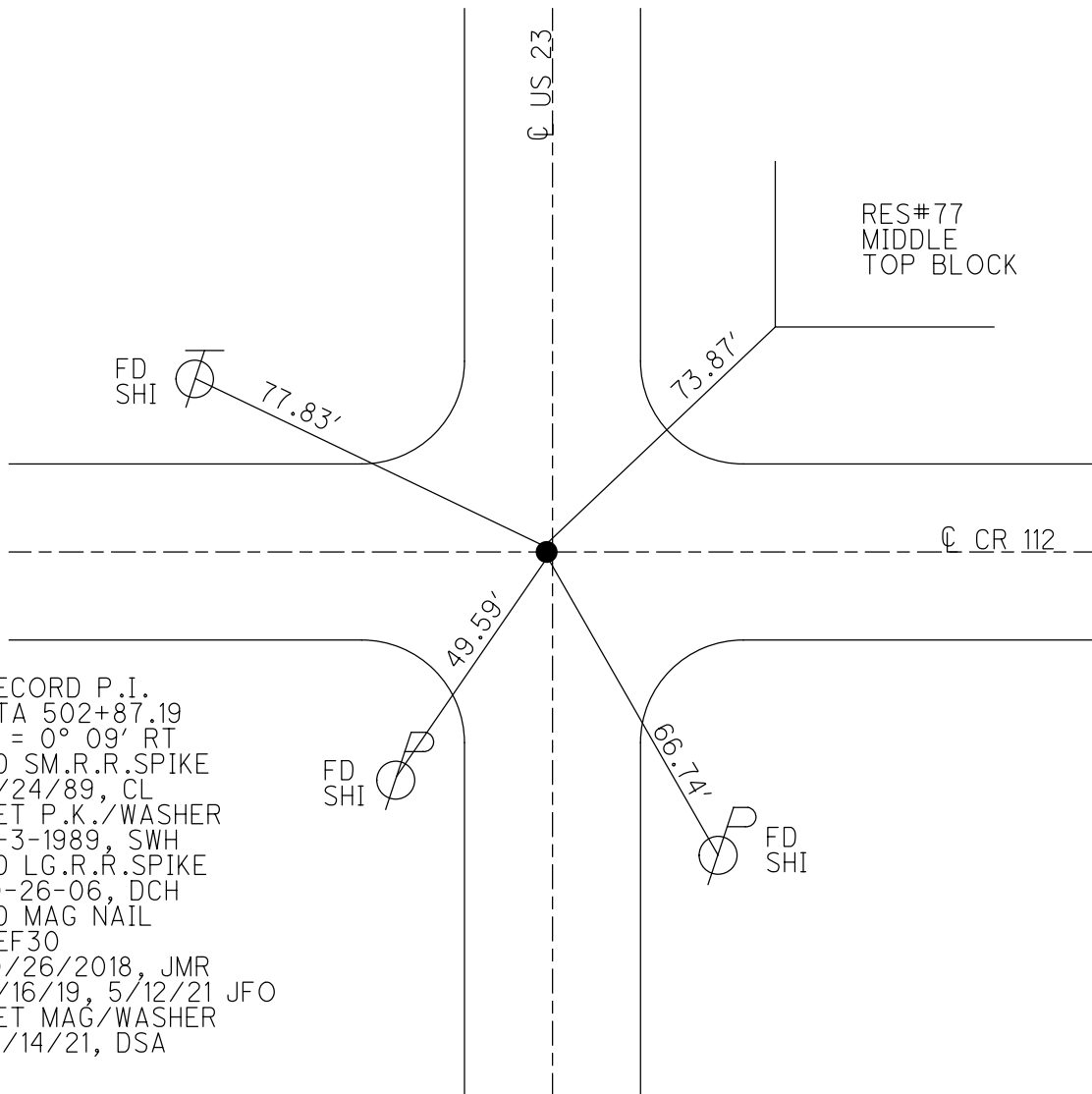
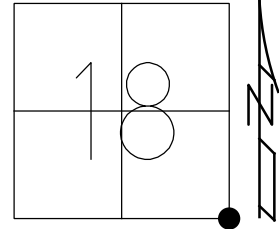


O.D.O.T. DISTRICT 2 SURVEY OFFICE (USE ONLY)

PERSONNEL _____ REFERENCE NO. 30 SHEET 12 OF 17
 NOTES O'DONNELL DATE 5/12/21 ROUTE US 23
 H.C. AUBLE WEATHER SUNNY COUNTY SENECA
 R.C. NIESE TEMP. 58° TOWNSHIP LOUDON
 DWG BY RHOADES PID 85264 SECTION 18
 T 2 N R 13 E

TYPE MONUMENT MAG NAIL
 ON SURFACE - ~~BELOW~~ ON
 OFFSET \bar{C} PAVEMENT 0.5' LT : RT
- TO - EDGE PAVEMENT
 STATION: 501+70.95

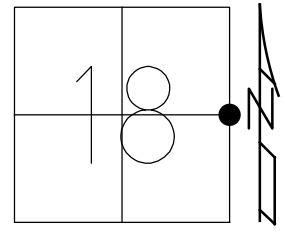
HORZ.DATUM: NAD83 2011 GEOID: 2012A
 GRID: NORTHING: 531909.693 EASTING: 1720116.672



O.D.O.T. DISTRICT 2 SURVEY OFFICE (USE ONLY)

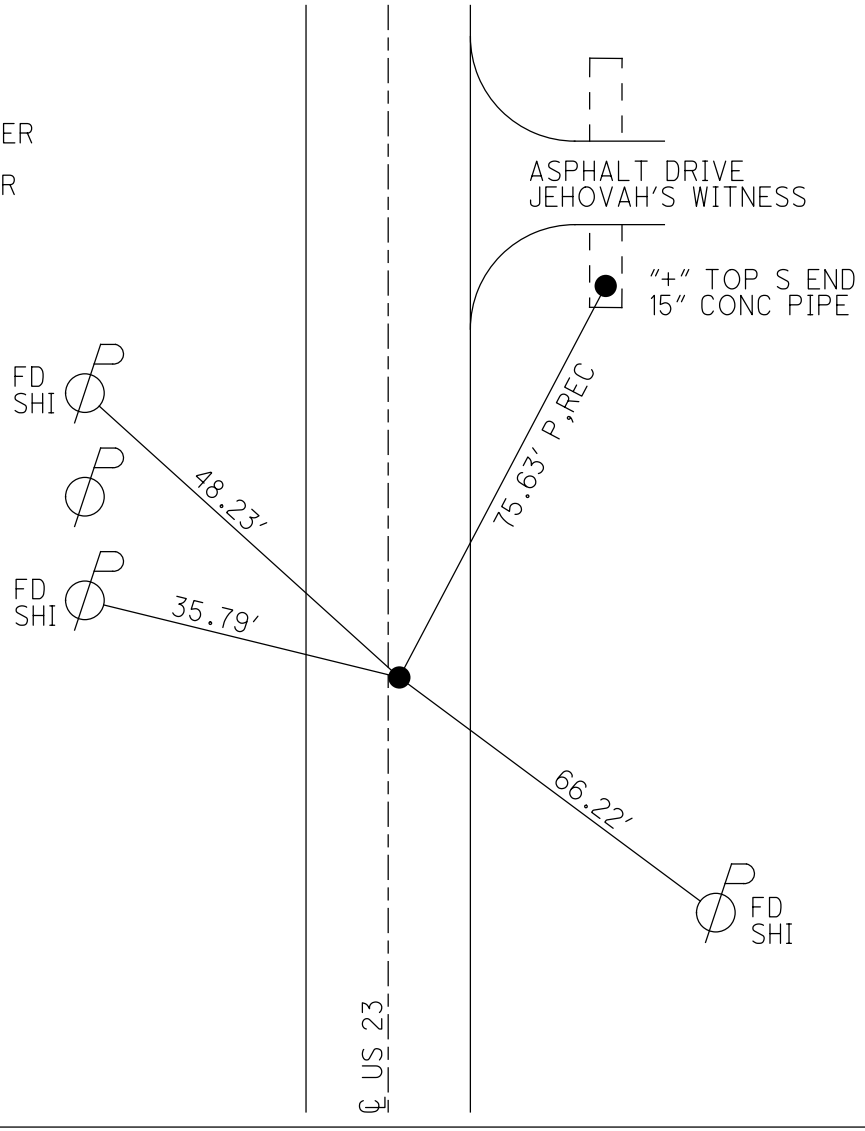
PERSONNEL _____ REFERENCE NO. 30 A SHEET 13 OF 17
 NOTES O'DONNELL DATE 5/12/21 ROUTE US 23
 H.C. AUBLE WEATHER SUNNY COUNTY SENECA
 R.C. NIESE TEMP. 58° TOWNSHIP LOUDON
 DWG BY RHOADES PID 85264 SECTION 18
 T 2 N R 13 E

TYPE MONUMENT LG.R.R.SPIKE
~~ON SURFACE~~ - BELOW 4"
 OFFSET \odot PAVEMENT 0.9' ~~LT~~ : RT
10.9' TO RT EDGE PAVEMENT
 STATION: 528+26



HORIZ.DATUM: NAD83 2011 GEOID: NAVD88 2012A
 GRID: NORTHING: 534559.055 EASTING: 1720130.603

RECORD:
 FD R.R.SPIKE
 7/24/89, CAL
 SET P.K./WASHER
 11/3/89, SWN
 FD P.K./WASHER
 REFA30
 1/7/20, JFO
 FD R.R.SPIKE
 4" DOWN
 5/12/21, DSA



O.D.O.T. DISTRICT 2 SURVEY OFFICE (USE ONLY)

PERSONNEL

REFERENCE NO. 30 B

SHEET 14 OF 17

NOTES O'DONNELL

DATE 5/12/21

ROUTE US 23

H.C. AUBLE

WEATHER SUNNY

COUNTY SENECA

R.C. NIESE

TEMP. 58°

TOWNSHIP LOUDON

SECTION 18

DWG BY RHOADES

PID 85264

T 2 N R 13 E

TYPE MONUMENT LG.R.R.SPIKE

~~ON SURFACE~~ - BELOW 4"

OFFSET Q PAVEMENT ON LT : RT

11.5' TO LT EDGE PAVEMENT

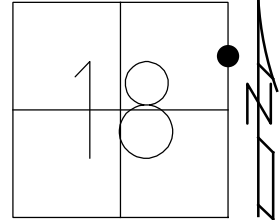
STATION: 541+55

HORZ.DATUM: NAD83 2011

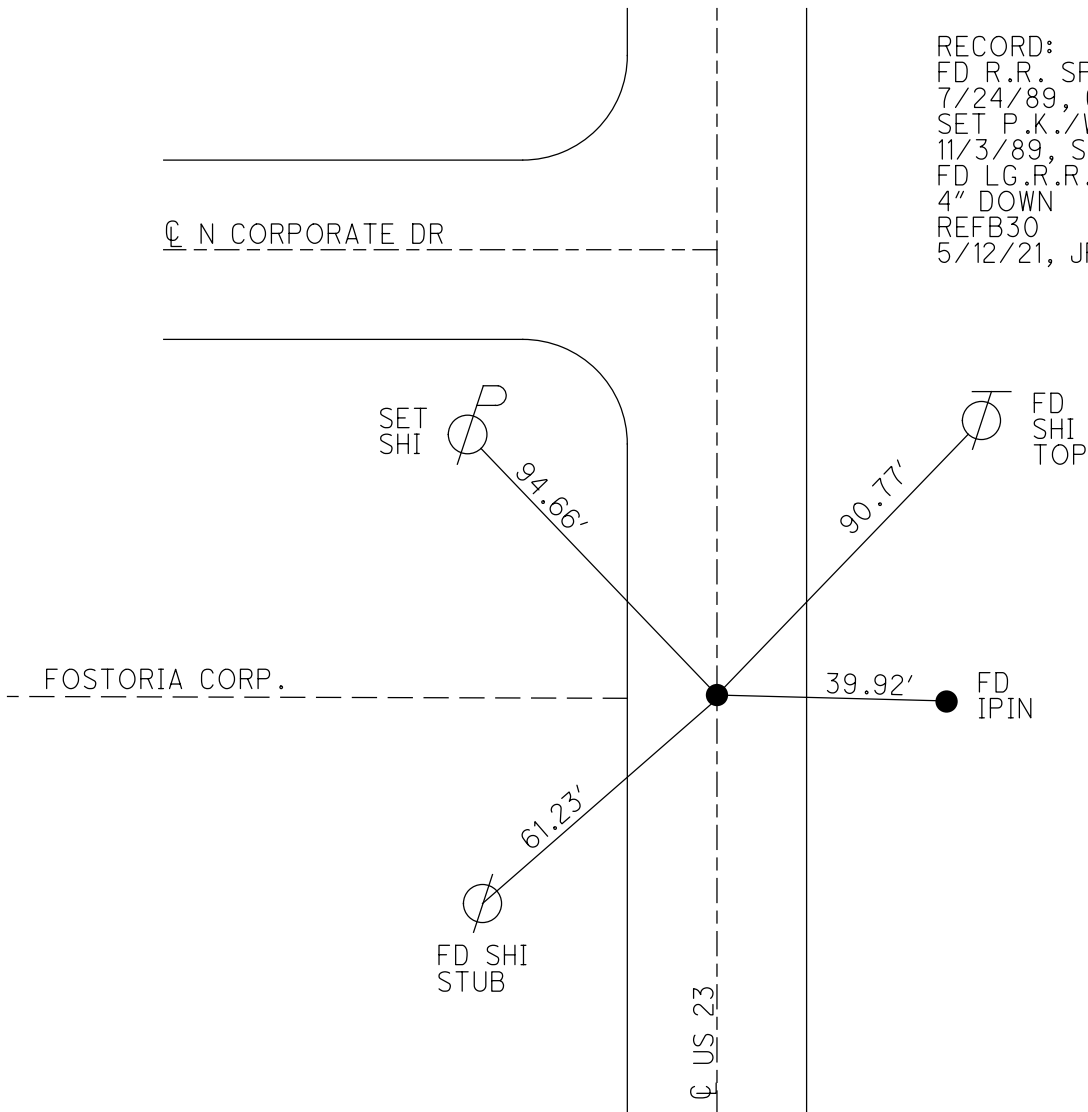
GEOID: NAVD88 2012A

GRID: NORTHING: 535885.282

EASTING: 1720137.224



RECORD:
 FD R.R. SPIKE
 7/24/89, CAL
 SET P.K./WASHER
 11/3/89, SWN
 FD LG.R.R.SPIKE
 4" DOWN
 REFB30
 5/12/21, JFO



O.D.O.T. DISTRICT 2 SURVEY OFFICE (USE ONLY)

PERSONNEL

REFERENCE NO. 30 C

SHEET 15 OF 17

NOTES O'DONNELL

DATE 5/12/21

ROUTE US 23

H.C. AUBLE

WEATHER SUNNY

COUNTY SENECA

R.C. NIESE

TEMP. 58°

TOWNSHIP LOUDON

SECTION 18

DWG BY RHOADES

PID 85264

T 2 N R 13 E

TYPE MONUMENT MAG/WASHER

ON SURFACE - ~~BELOW~~ ON

OFFSET Q PAVEMENT ON LT : RT

11.0' TO RT EDGE PAVEMENT

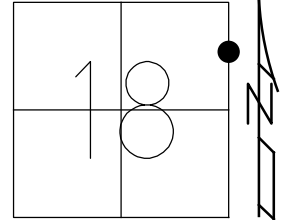
STATION: 542+74

HORIZ.DATUM: NAD83 2011

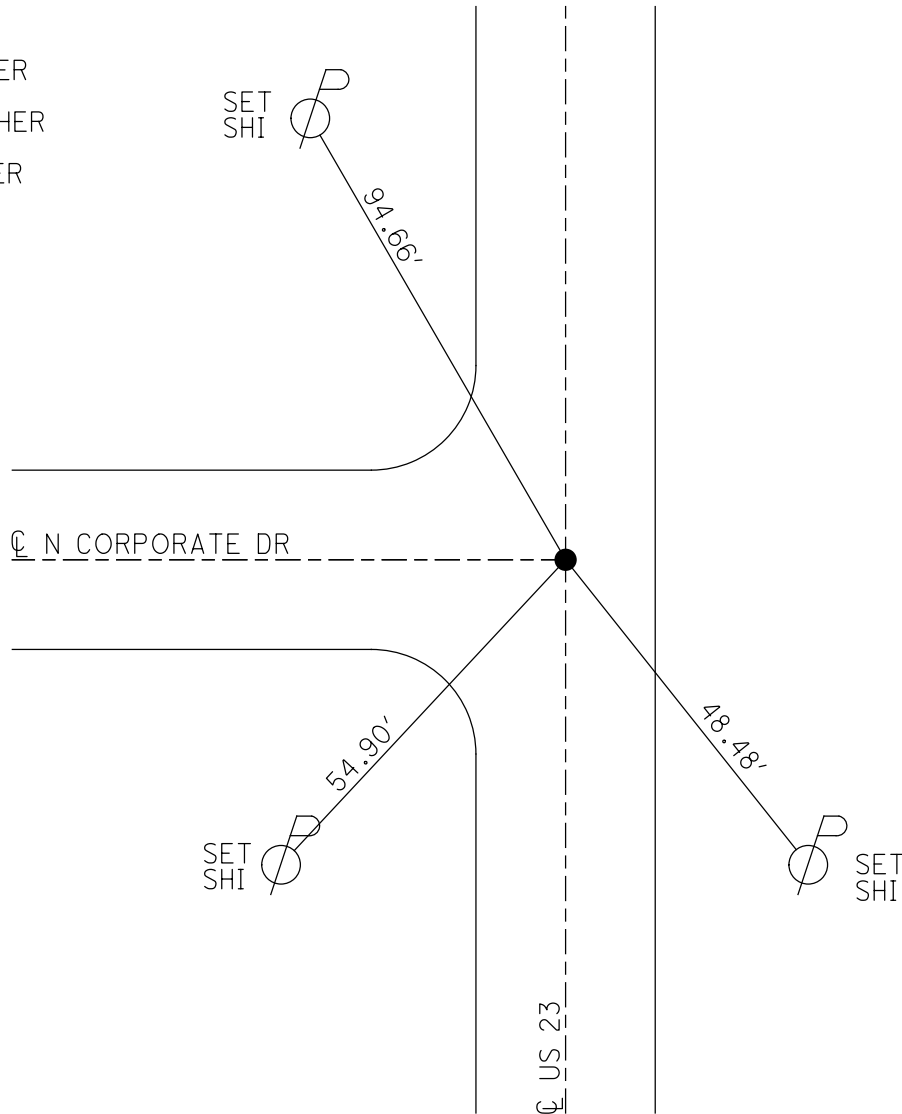
GEOID: NAVD88 2012A

GRID: NORTHING: 536004.974

EASTING: 1720137.804



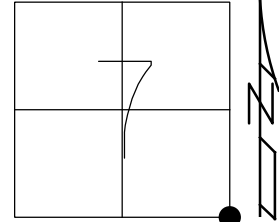
RECORD:
 FD P.K./WASHER
 7/24/89, CAL
 SET P.K./WASHER
 11/3/89, SWN
 FD MAG/WASHER
 REFC30
 1/7/20, JFO



O.D.O.T. DISTRICT 2 SURVEY OFFICE (USE ONLY)

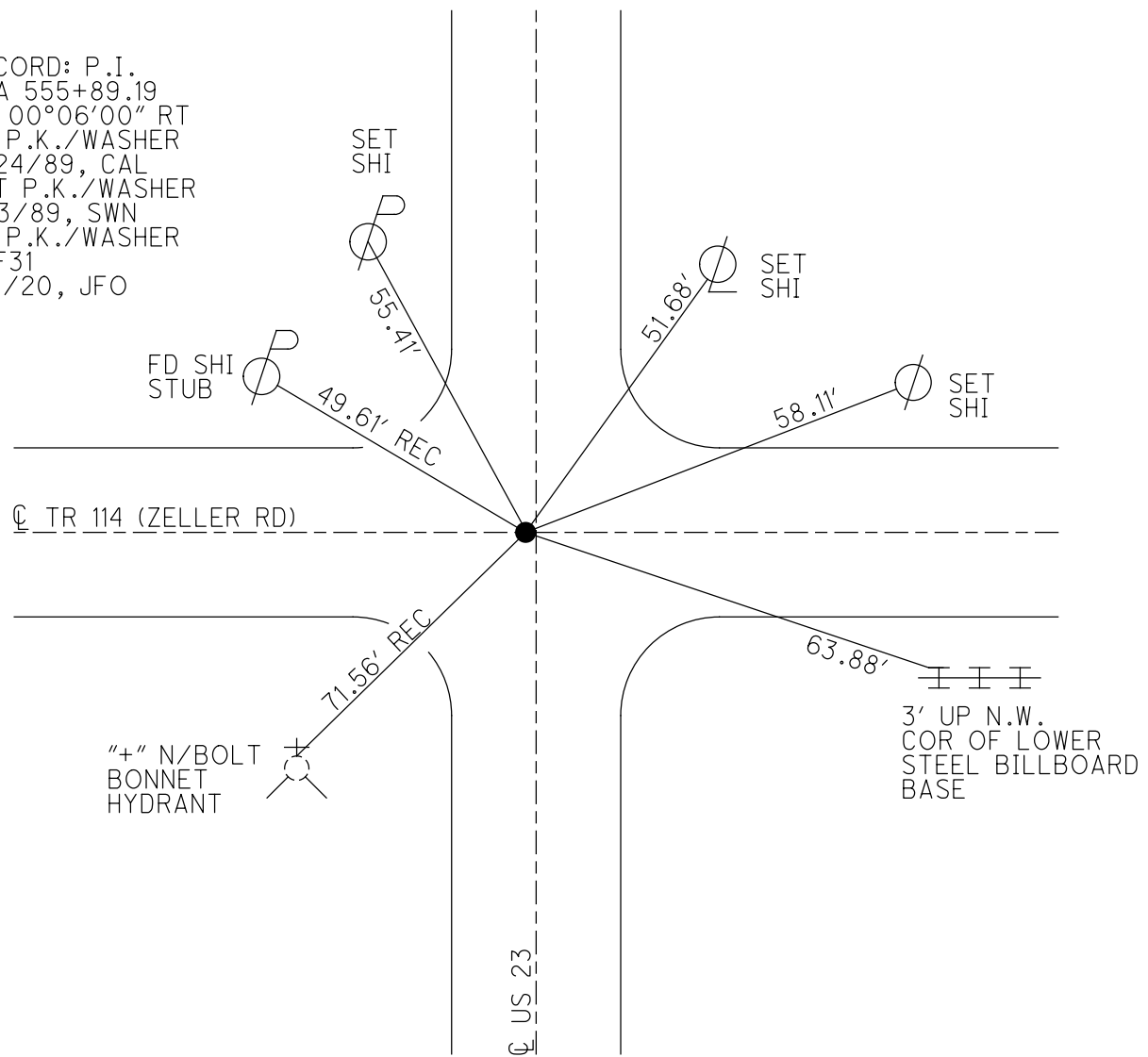
PERSONNEL _____ REFERENCE NO. 31 SHEET 16 OF 17
 NOTES O'DONNELL DATE 5/12/21 ROUTE US 23
 H.C. AUBLE WEATHER SUNNY COUNTY SENECA
 R.C. NIESE TEMP. 50° TOWNSHIP LOUDON
 DWG BY RHOADES PID 85264 SECTION 7
 T 2 N R 13 E

TYPE MONUMENT P.K./WASHER
~~ON SURFACE~~ - BELOW 1 1/2"
 OFFSET \odot PAVEMENT 0.6' LT : ~~RT~~
 - TO - EDGE PAVEMENT
 STATION: 554+84



HORIZ.DATUM: NAD83 2011 GEOID: NAVD88 2012A
 GRID: NORTHING: 537210.649 EASTING: 1720143.734

RECORD: P.I.
 STA 555+89.19
 $\Delta = 00^{\circ}06'00''$ RT
 FD P.K./WASHER
 7/24/89, CAL
 SET P.K./WASHER
 11/3/89, SWN
 FD P.K./WASHER
 REF31
 1/7/20, JFO



O.D.O.T. DISTRICT 2 SURVEY OFFICE (USE ONLY)

PERSONNEL

REFERENCE NO. 32

SHEET 1 OF 1

NOTES BARNHEISEL

DATE 7/10/97

ROUTE US 23

H.C. CANTERBURY

WEATHER SUNNY

COUNTY SENECA

R.C. WEAVER

TEMP. 70°

TOWNSHIP LOUDON

ROUSOS

SECTION 6

DWG BY RHOADES PID _____

T 2 N R 13 E

TYPE MONUMENT P.K./WASHER

ON SURFACE - BELOW 2'

OFFSET ☉ PAVEMENT ON _____ LT : RT

22' TO LT EDGE PAVEMENT

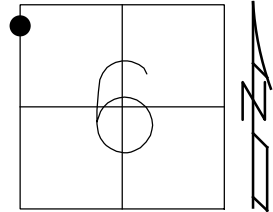
STATION: 694+49.8'

HORZ. DATUM: _____

GEOID: _____

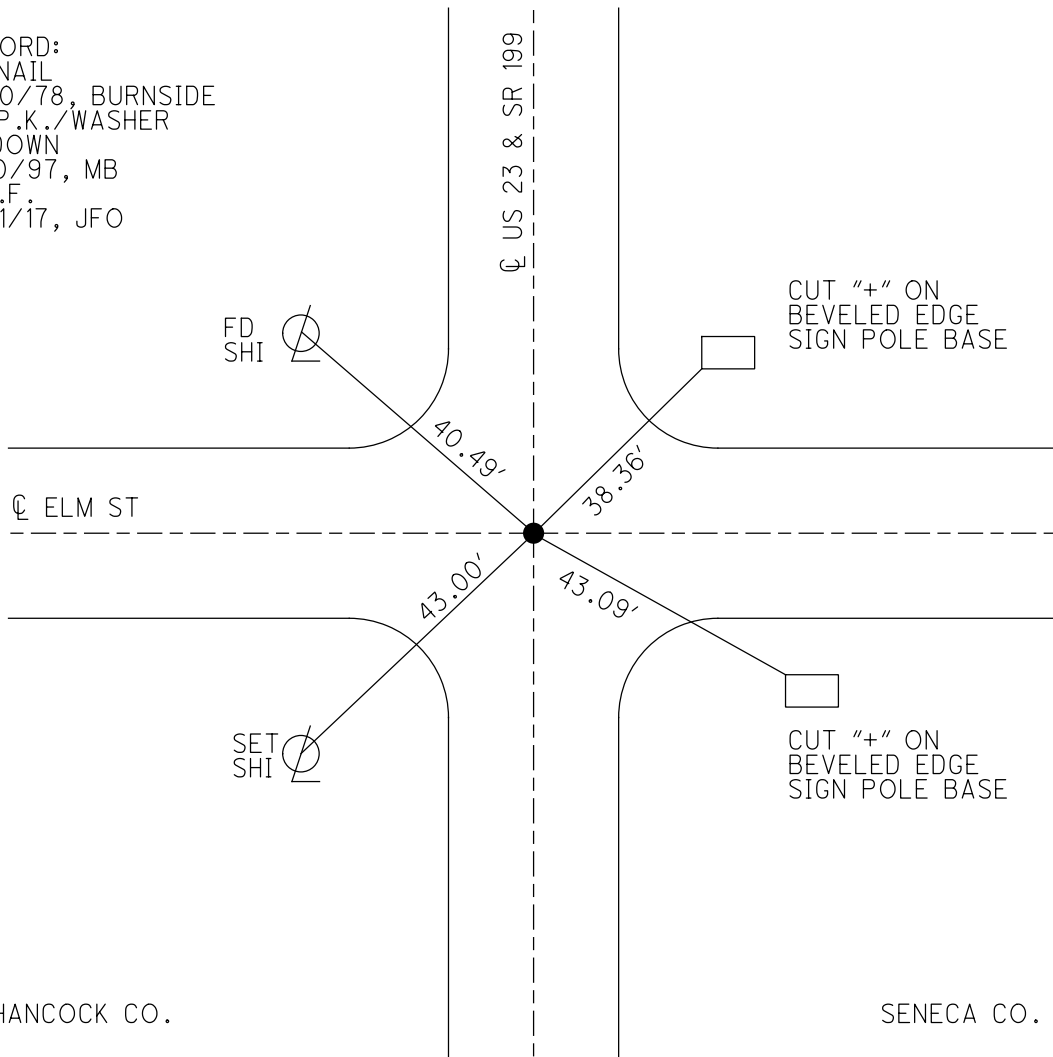
GRID: NORTHING: _____

EASTING: _____



RECORD:

FD NAIL
7/20/78, BURNSIDE
FD P.K./WASHER
2" DOWN
7/10/97, MB
D.N.F.
7/21/17, JFO



HANCOCK CO.

SENECA CO.