

O.D.O.T. DISTRICT 2 SURVEY OFFICE (USE ONLY)

PERSONNEL

REFERENCE NO. 11

SHEET 12 OF 22

NOTES O'DONNELL

DATE 5/11/21

ROUTE US 23

H.C. AUBLE

WEATHER SUNNY

COUNTY SENECA

R.C. NIESH

TEMP. 45°

TOWNSHIP BIG SPRING

SECTION 19

DWG BY RHOADES

PID 85264

T 1 N R 13 E

TYPE MONUMENT SM.R.R.SPIKE

ON ~~SURFACE~~ - BELOW 3"

OFFSET CL PAVEMENT 0.5' LT : RT

10.3 TO LT EDGE PAVEMENT

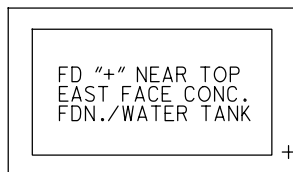
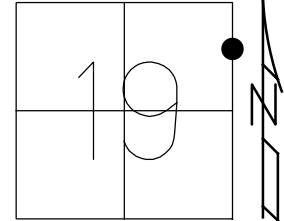
STATION: 170+97.30

HORZ.DATUM: NAD83 2011

GEOID: NAVD88 2012A

GRID: NORTHING: 498736.558

EASTING: 1719760.575



46.62'

CL US 23

FD "+"
12" RCP



34.12 P

98.94'



RECORD: P.O.T.
STA. 170+97.30
FD SM.R.R.SPIKE
7/19/89, CL
SET P.K./WASHER
10/31/89, SWH
FD P.K./WASHER
9/01/09
FD SM.R.R.SPIKE
3" DOWN
REF11
8/16/19
5/11/21, JFO
SET MAG/WASHER
12/10/21, DSA

O.D.O.T. DISTRICT 2 SURVEY OFFICE (USE ONLY)

PERSONNEL

REFERENCE NO. 11

SHEET 12 OF 22

NOTES ELKHECHEN

DATE 10/29/08

ROUTE US 23

H.C. LEU

WEATHER CLOUDY

COUNTY SENECA

R.C. MILLER

TEMP. 45°

TOWNSHIP BIG SPRING

SECTION 19

DWG BY NASON

PID PT-SEN19

T 1 N R 13 E

TYPE MONUMENT SM. R.R. SPIKE

ON SURFACE - BELOW 3"

OFFSET \varnothing PAVEMENT 0.5' LT : RT

10.3 TO LT. EDGE PAVEMENT

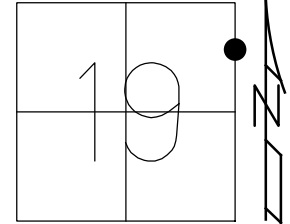
STATION: 170+97.30

HORZ.DATUM: NAD83 (2011)

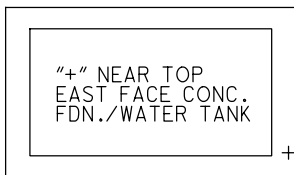
GEOID: 2012A

GRID: NORTHING: 498736.558

EASTING: 1719760.575



RECORD: P.O.T.
 STA. 170+97.30
 FD SM.R.R.SPIKE
 7/19/89, CL
 SET P.K./WASHER
 10/31/89, SWH
 FD P.K./WASHER
 9/01/09
 FD SM.R.R.SPIKE
 3" DOWN
 REF11
 8/16/19, JFO



46.63'

33.85'

98.36'

SET "+" TOP
 1' FR/END
 12" RCP

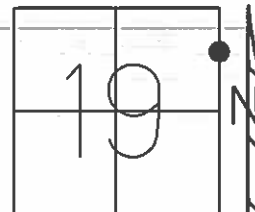
FD
 SHI

\varnothing US 23

O.D.O.T. DISTRICT 2 SURVEY OFFICE (USE ONLY)

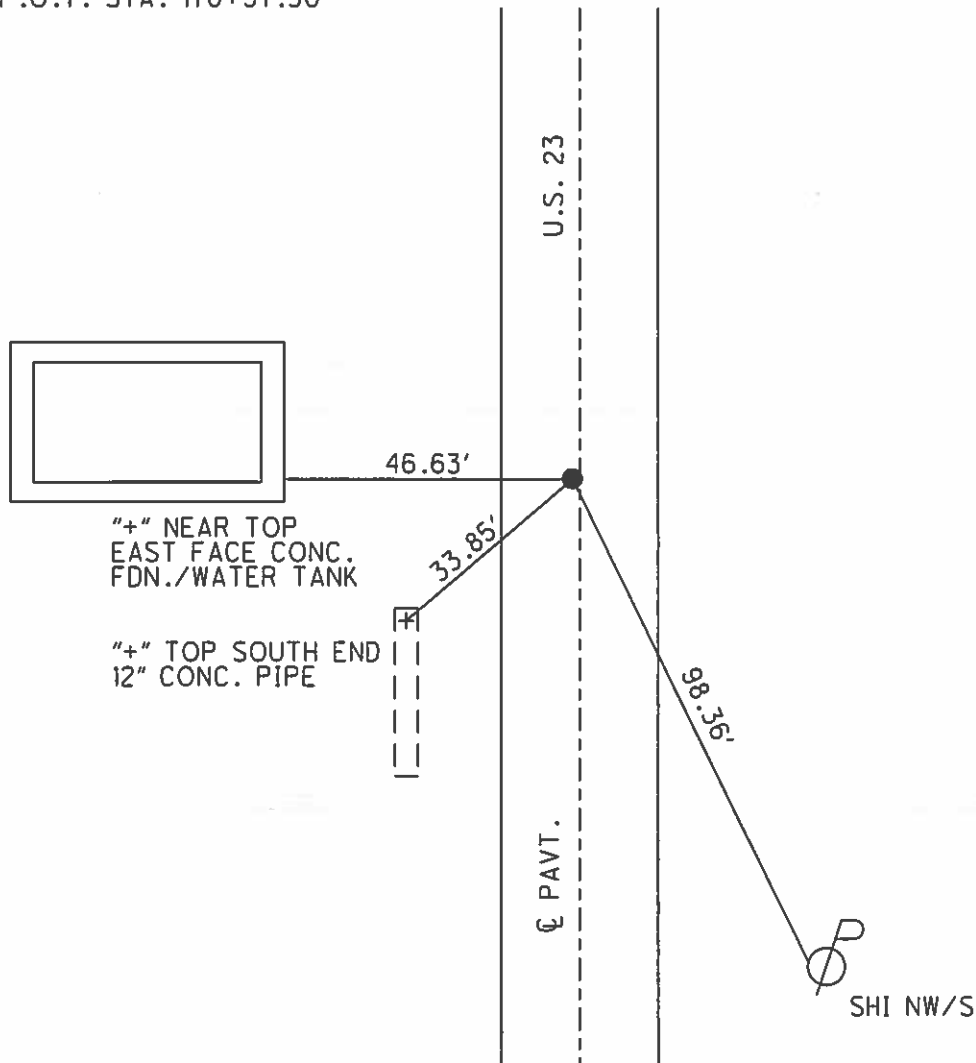
PERSONNEL _____ REFERENCE NO. 11 SHEET 12 OF 22
 NOTES LOEHRKE DATE 07-19-89 ROUTE US 23
 H.C. HOFFMAN WEATHER RAIN COUNTY SENECA
 R.C. BARNHISEL TEMP. +75 TOWNSHIP BIG SPRING
 _____ SECTION 19
 _____ T 1 N R 13 E

TYPE MONUMENT SM. R.R. SPIKE
 ON SURFACE - ~~BELOW~~ ON SURFACE
 LEFT - Q PAV'T - ~~RIGHT~~ 1.2'
10.3 TO LT. EDGE PAVEMENT
 S.L.M. 168+95
 GRID: NORTHING: _____ EASTING: _____



P.O.T. STA. 170+97.30

RECORD
 10-31-89 SWH
 SET P.K./WASHER
 09-01-09
 FD.



O.D.O.T. DISTRICT 2 SURVEY OFFICE

PERSONNEL _____

REFERENCE NO. 11

SHEET _____ OF _____

NOTES LOEHRKE

H.C. Hoffman

R.C. BARNHISEL

DATE 7-19-89

WEATHER RAIN

TEMP. +75

ROUTE U.S. 23

COUNTY SENECA

TOWNSHIP Big Springs

SECTION 19

T _____ R _____

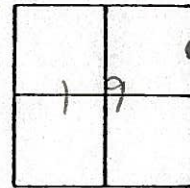
TYPE MONUMENT Sm. R.R. Spike Set PK/washer 10-31-89 SWK

ON SURFACE - ~~BELOW~~ Yes

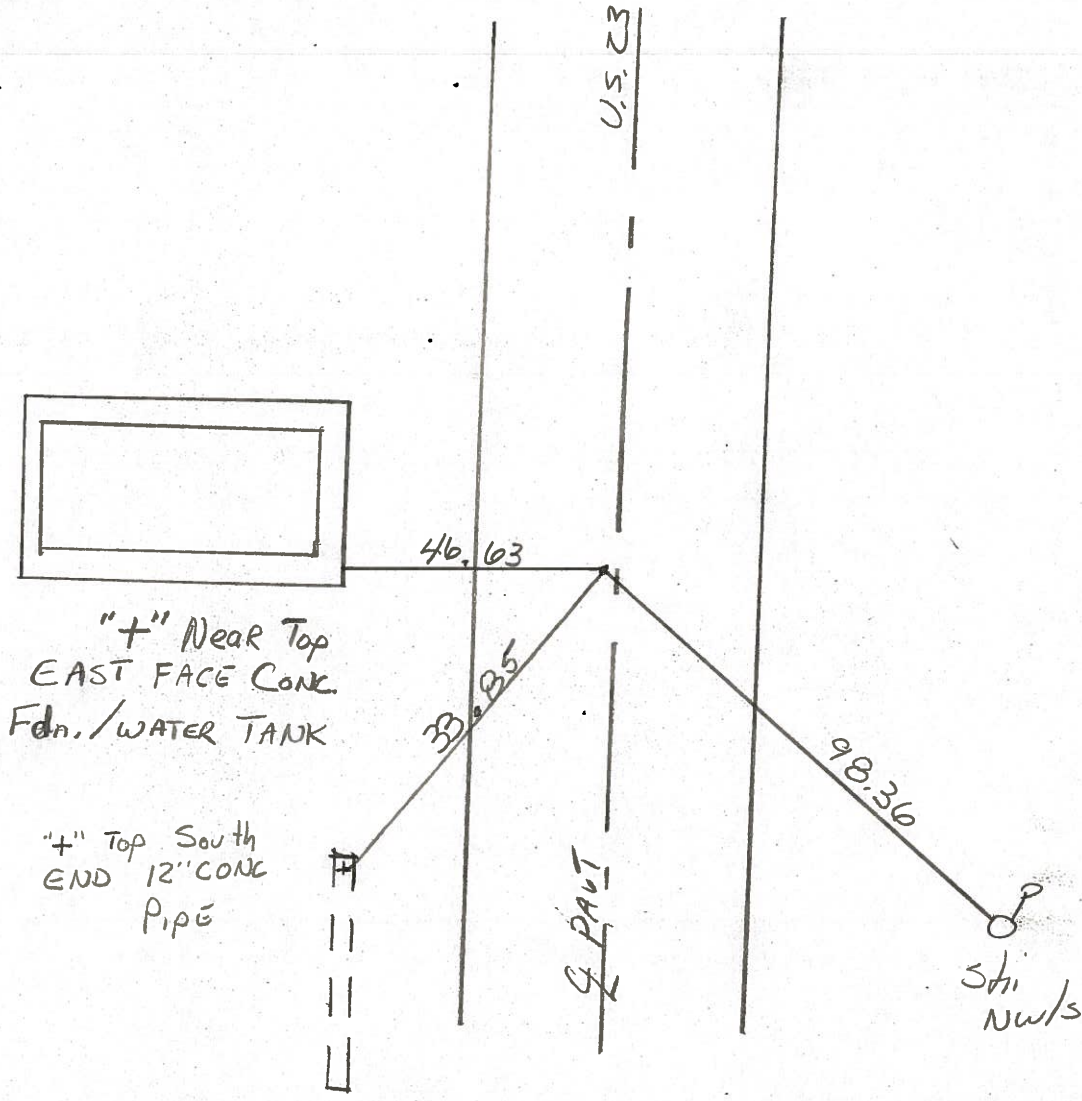
LEFT- & PAV'T. - ~~RIGHT~~ 1.2 Lt

10.3 TO Lt EDGE PAVEMENT

S.L.M. 168195



P.O.T Sta 170+97.30



ODOT DISTRICT 2 SURVEY OFFICE

SHEET

OF

County Seneca S.R. 4.5.23

Date 6-22-81

Township Big Spring

Weather Partly Cloudy

Section 19

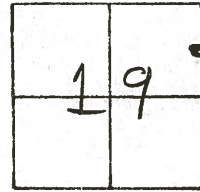
Temp. +77°

T N, R E

Personnel Hoffman

Householder

11

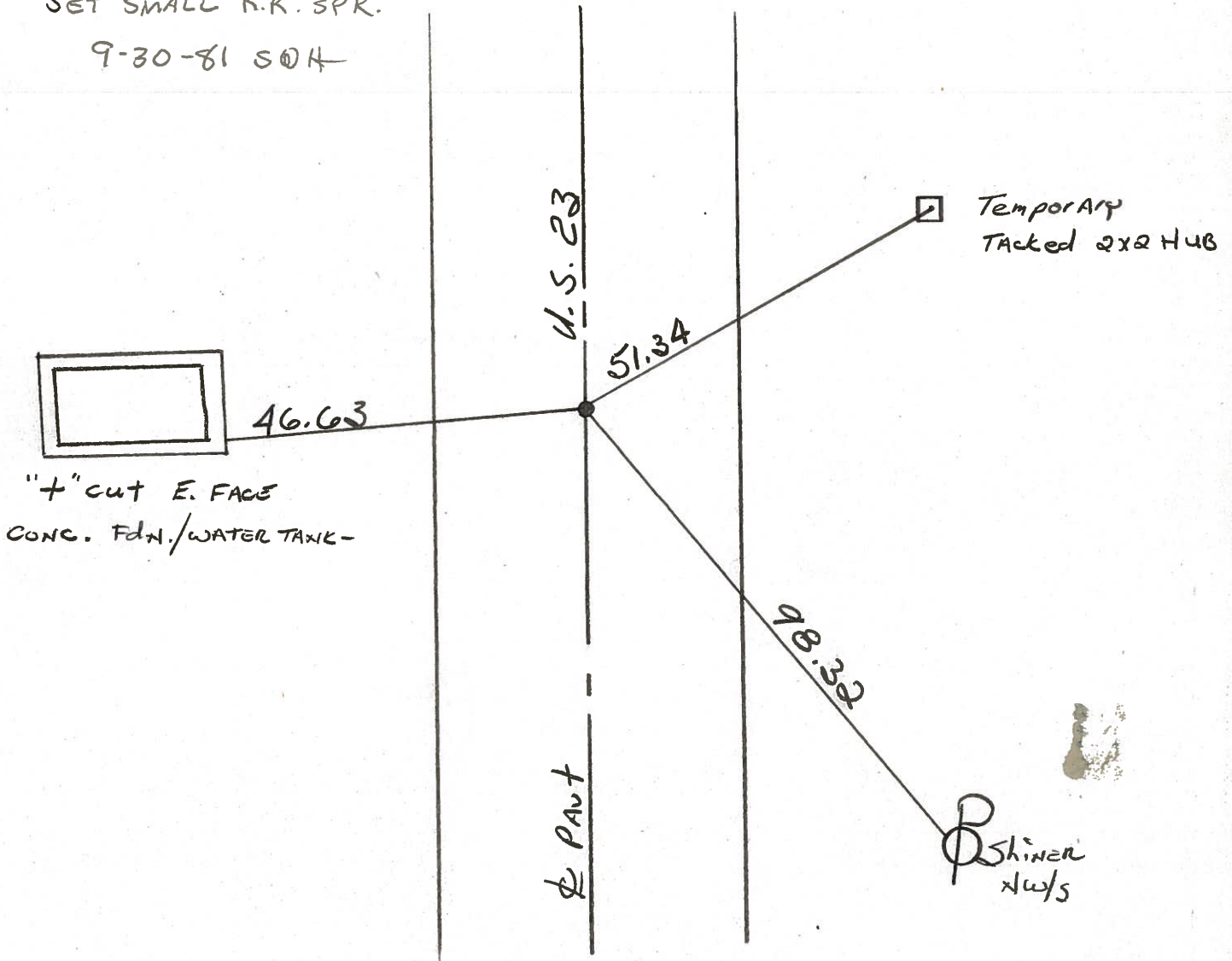


Fd. P.K. Nail @ Surface
@ CTR. of Pavt.

PROJECT STA. ± 169+02

SET SMALL R.R. SPK.

9-30-81 SOK



P.O.T. STA. 170+97.30

PERSONNEL	TITLE	PERSONNEL	TITLE
Schneider			
Mosser			
Barbour			
Potts			

COUNTY Seneca DATE 8-26-

S. R. U.S. 23 WEATHER Fair

SEC. Wyandot Co. Line N. TEMP 80°

DESCRIPTION Ties for Control Points LEFT CENTER LINE RIGHT JOB NO.

