

O.D.O.T. DISTRICT 2 SURVEY OFFICE (USE ONLY)

PERSONNEL

REFERENCE NO. 12

SHEET 13 OF 22

NOTES O'DONNELL

DATE 5/11/21

ROUTE US 23

H.C. AUBLE

WEATHER SUNNY

COUNTY SENECA

R.C. NIESE

TEMP. 45°

TOWNSHIP BIG SPRING

SECTION 18

DWG BY RHOADES

PID 85264

T 1 N R 13 E

TYPE MONUMENT SM.R.R.SPIKE

ON ~~SURFACE~~ - BELOW 3.5"

OFFSET \varnothing PAVEMENT 1.5' LT : ~~RT~~

- TO - EDGE PAVEMENT

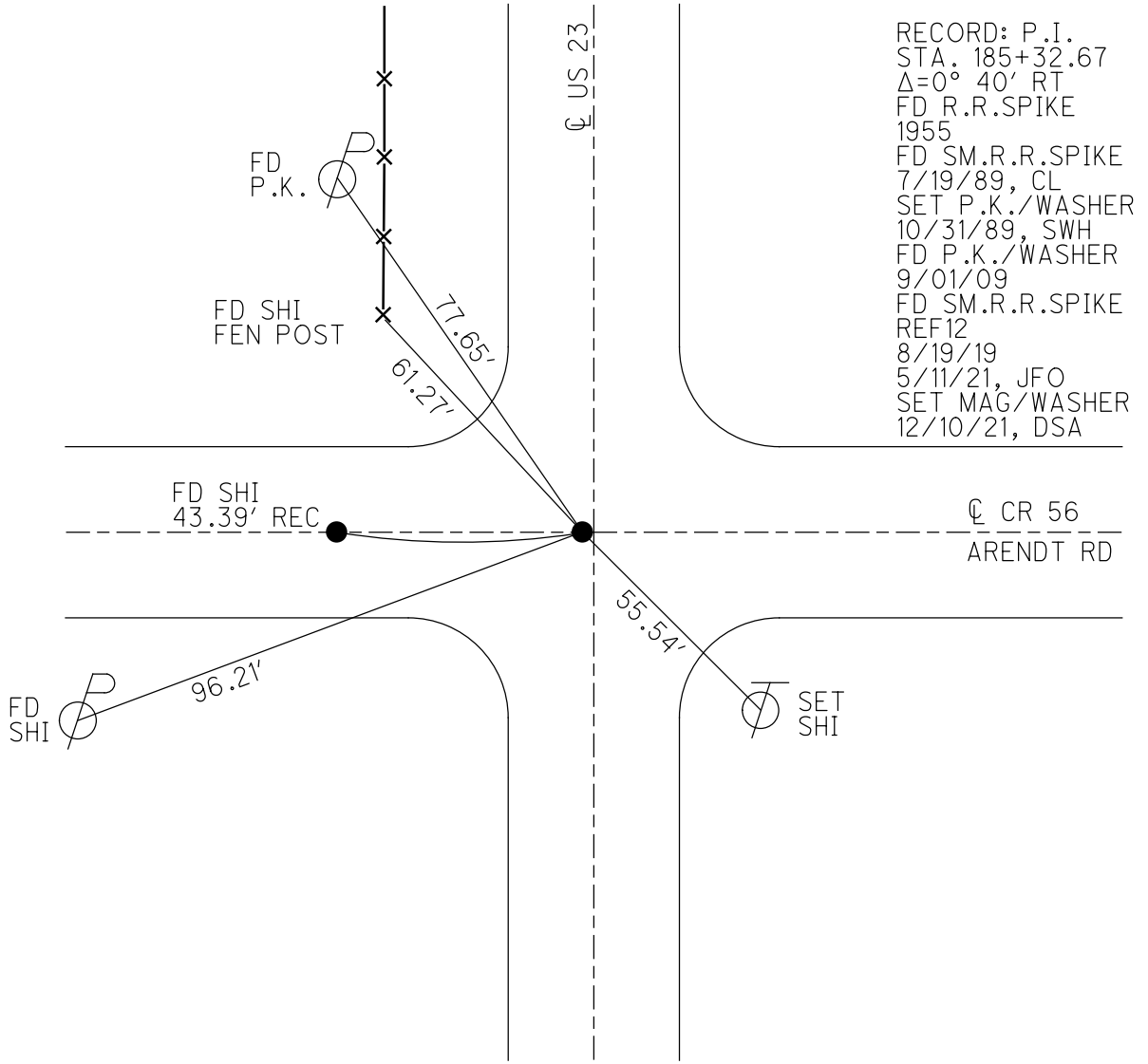
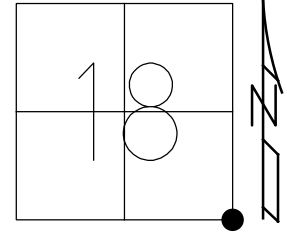
STATION: 185+32.67

HORZ.DATUM: NAD83 2011

GEOID: NAVD88 2012A

GRID: NORTHING: 500171.803

EASTING: 1719767.965

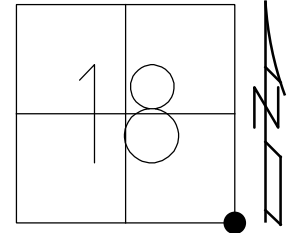


RECORD: P.I.
 STA. 185+32.67
 $\Delta=0^\circ 40' RT$
 FD R.R.SPIKE
 1955
 FD SM.R.R.SPIKE
 7/19/89, CL
 SET P.K./WASHER
 10/31/89, SWH
 FD P.K./WASHER
 9/01/09
 FD SM.R.R.SPIKE
 REF12
 8/19/19
 5/11/21, JFO
 SET MAG/WASHER
 12/10/21, DSA

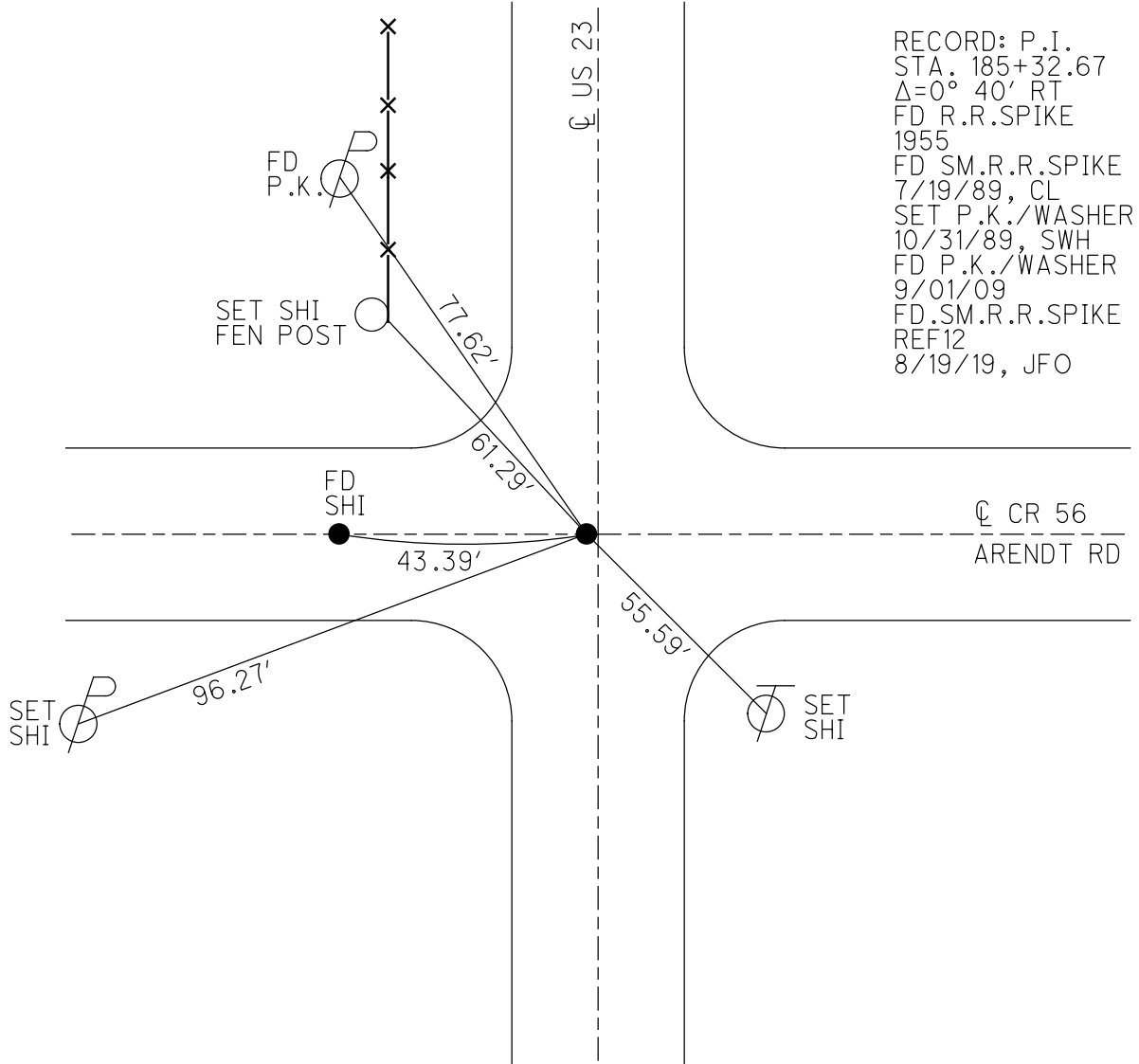
O.D.O.T. DISTRICT 2 SURVEY OFFICE (USE ONLY)

PERSONNEL _____ REFERENCE NO. 12 SHEET 13 OF 22
 NOTES ELKHECHEN DATE 10/29/18 ROUTE US 23
 H.C. LEU WEATHER CLOUDY COUNTY SENECA
 R.C. MILLER TEMP. 46° TOWNSHIP BIG SPRING
 DWG BY NASON PID PT-SEN19 SECTION 18
 T 1 N R 13 E

TYPE MONUMENT SM. R.R. SPIKE
 ON ~~SURFACE~~ - BELOW 3.5"
 OFFSET \varnothing PAVEMENT 1.5' LT : ~~RT~~
 - TO - EDGE PAVEMENT 1.0' N. OF \varnothing CR 56
 STATION: 185+32.67



HORZ.DATUM: NAD83 (2011) GEOID: 2012A
 GRID: NORTHING: 500171.803 EASTING: 1719767.965

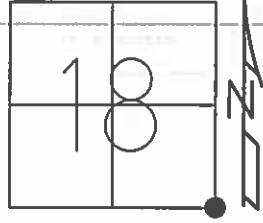


RECORD: P.I.
 STA. 185+32.67
 $\Delta=0^\circ 40'$ RT
 FD R.R.SPIKE
 1955
 FD SM.R.R.SPIKE
 7/19/89, CL
 SET P.K./WASHER
 10/31/89, SWH
 FD P.K./WASHER
 9/01/09
 FD SM.R.R.SPIKE
 REF12
 8/19/19, JFO

O.D.O.T. DISTRICT 2 SURVEY OFFICE (USE ONLY)

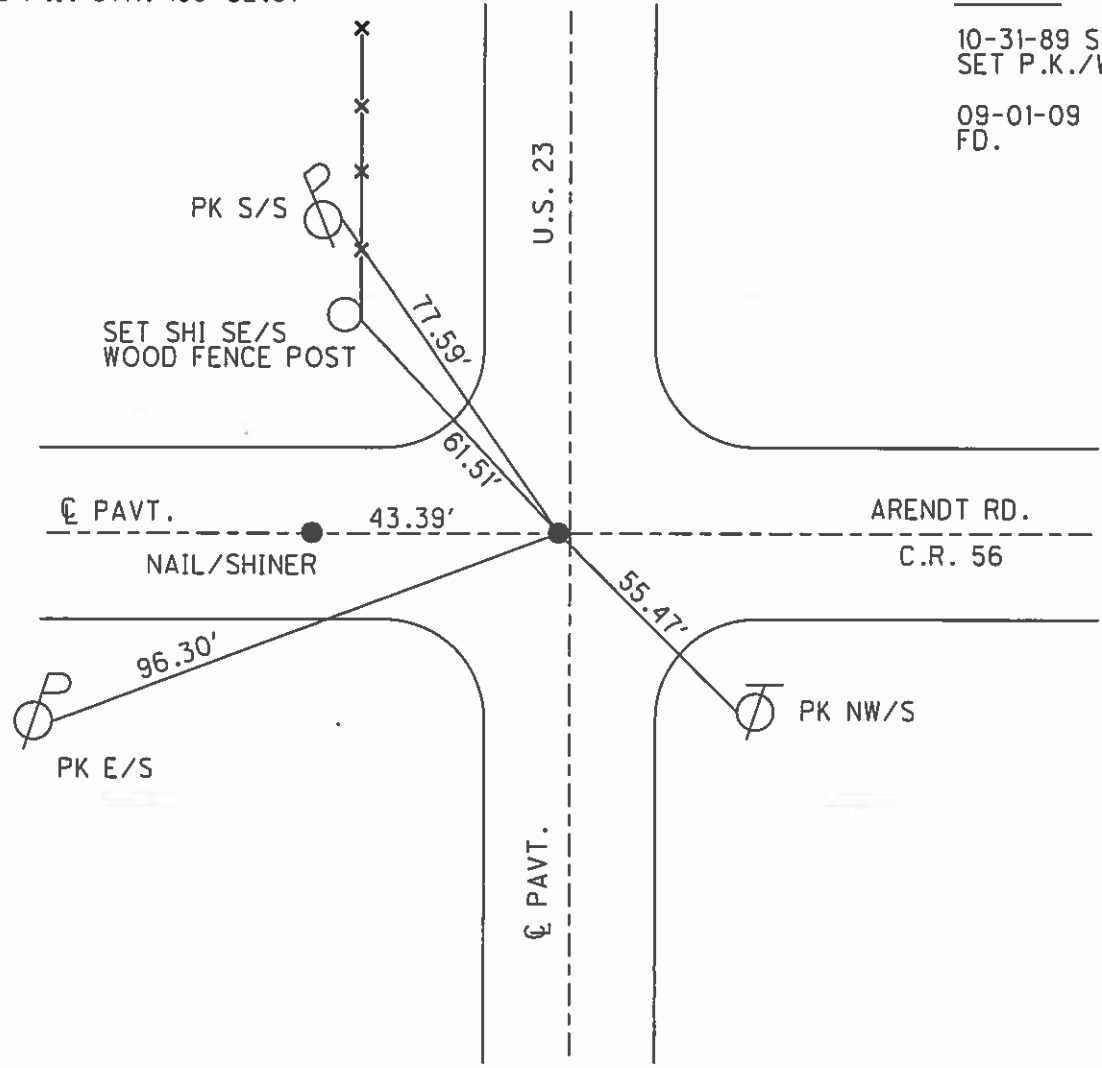
PERSONNEL _____ REFERENCE NO. 12 SHEET 13 OF 22
 NOTES LOEHRKE DATE 07-19-89 ROUTE US 23
 H.C. HOFFMAN WEATHER CLOUDY COUNTY SENECA
 R.C. BARNHISEL TEMP. +75 TOWNSHIP BIG SPRING
 SECTION 18
 T 1 N R 13 E

TYPE MONUMENT SM. R.R. SPIKE
 ON SURFACE - ~~BELOW~~ ON SURFACE
 LEFT - Q PAV'T - ~~RIGHT~~ 1.8', 1.0' N. OF Q C.R. 56
 TO EDGE PAVEMENT
 S.L.M. 183+33
 GRID: NORTHING: _____ EASTING: _____



REC P.I. STA. 185+32.67

RECORD
 10-31-89 SWH
 SET P.K./WASHER
 09-01-09
 FD.



O.D.O.T. DISTRICT 2 SURVEY OFFICE

PERSONNEL _____

REFERENCE NO. 12

SHEET _____ OF _____

NOTES LOEHRKE

H.C. Hoffman

R.C. BARNHISEL

DATE 7-19-89

WEATHER Cloudy

TEMP. 75

ROUTE U.S. 23

COUNTY SENECA

TOWNSHIP Big Springs

SECTION 18

T _____ R _____

TYPE MONUMENT Sm. R.R. SPIKE

set P.K./washer
10-31-89 SWH

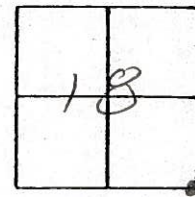
ON SURFACE - BELOW Yes

LEFT - Q PAVT. - RIGHT 1.8 Lt

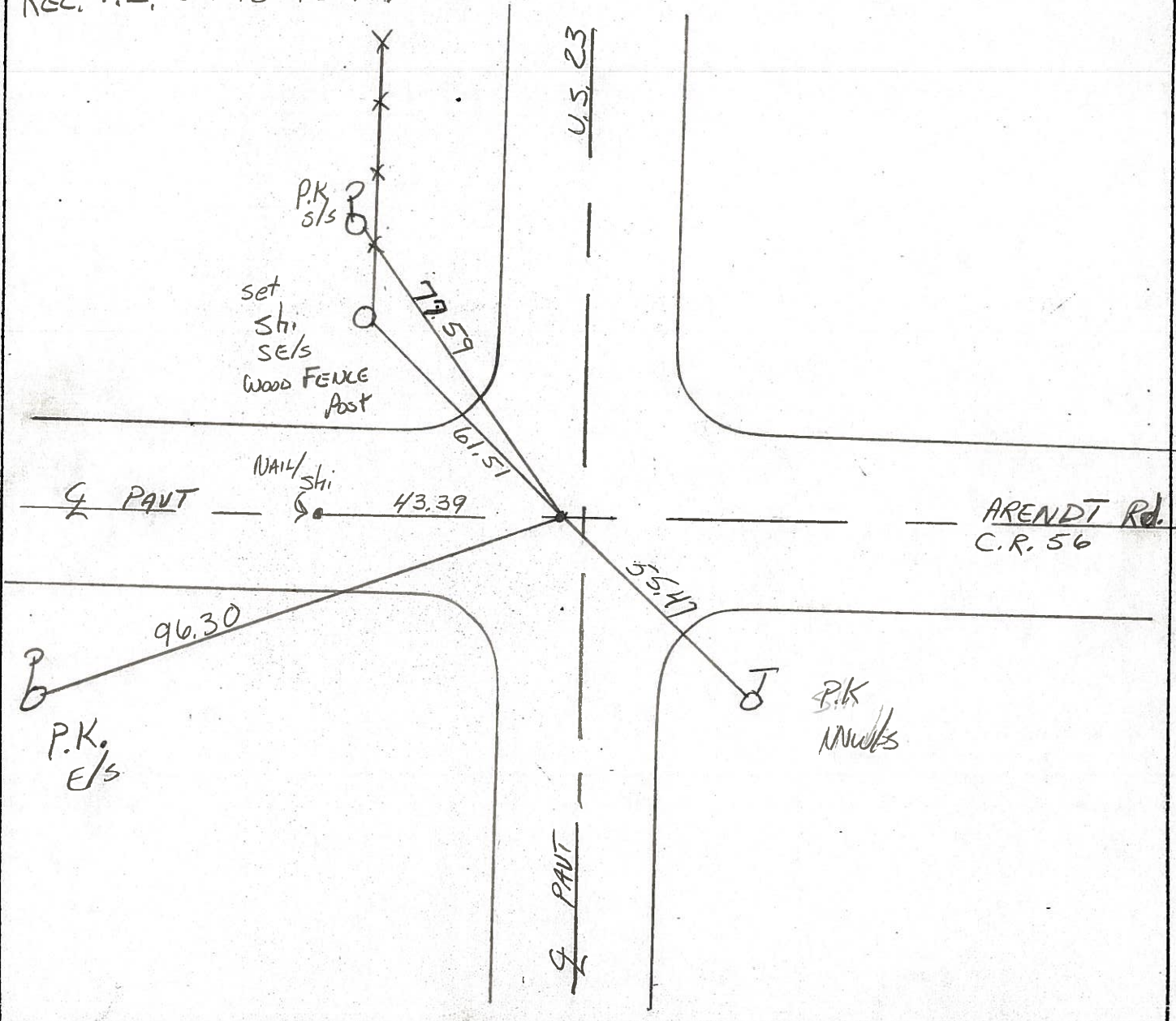
1.0 N. of
Q WEST

TO EDGE PAVEMENT

S.L.M. 183733



Rec. P.I. Sta 185+32.67



ODOT. DISTRICT 2 SURVEY OFFICE

SHEET OF

County Seneca S.R. U.S. 23

Date 6-22-81

Township Big Spring

Weather Partly Cloudy

Section 18

Temp. +77°

T N, R E

Personnel Hoffman
Householder



12

PROJECT STA. ± 183+45

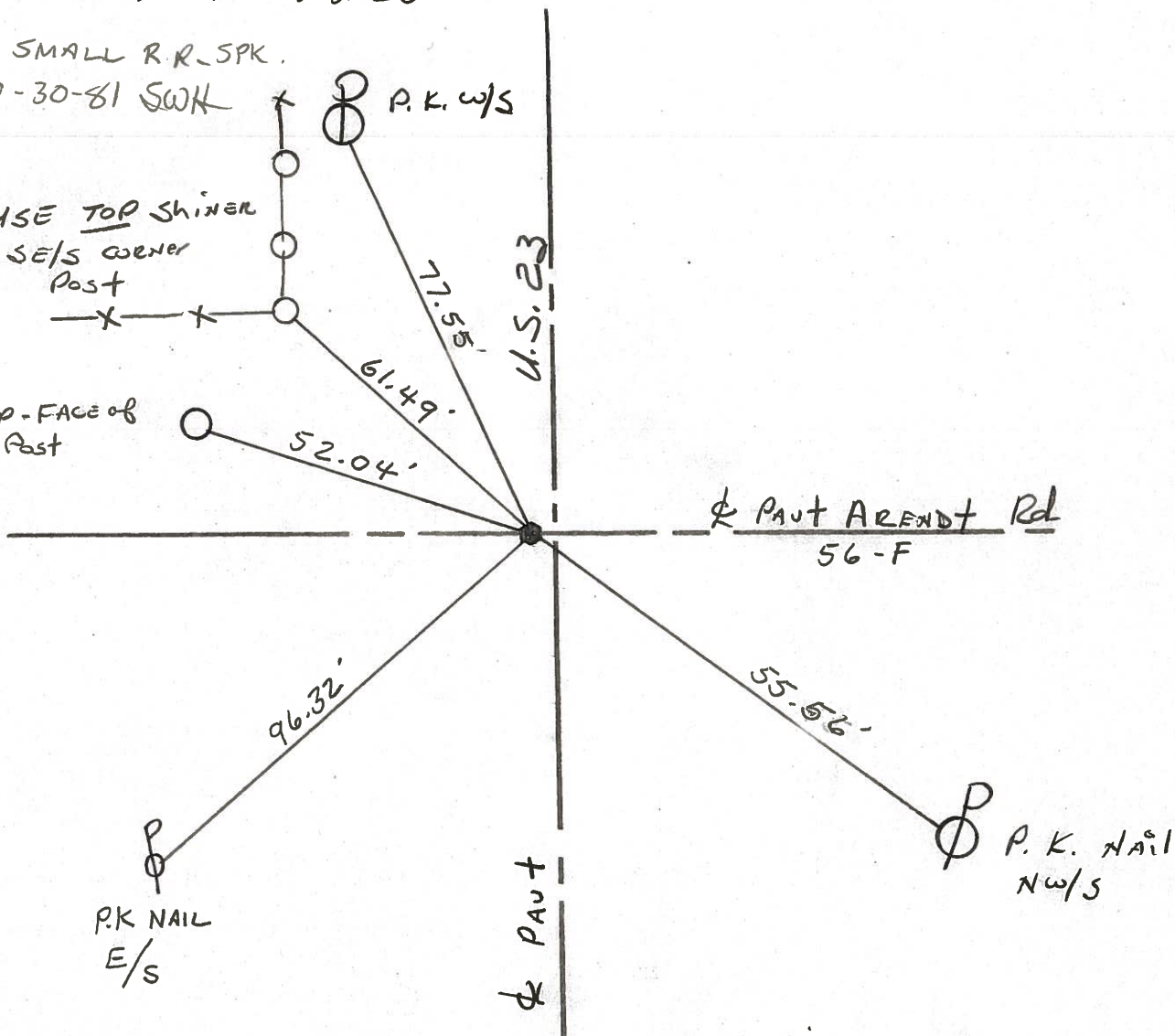
FD. BENT R.R. SPK @ SURFACE
1.5' W. OF & PAVT. U.S. 23

SET SMALL R.R. SPK.

9-30-81 SWH

USE TOP SHINER
SE/S CORNER
POST

"+" 1' up-FACE of
ROAD SIGN POST



P.I. STA. 185+32.67 - REC

PERSONNEL	TITLE	PERSONNEL	TITLE	COUNTY	DATE	WEATHER	TEMP
Schneider				Seneca	8-26-	Fair	80°
Mosser				U.S. 23			
Barbour				Wyandot Co. Line N.			
Potts							

DESCRIPTION: Ties for Control Points

