

O.D.O.T. DISTRICT 2 SURVEY OFFICE (USE ONLY)

PERSONNEL

REFERENCE NO. 13

SHEET 14 OF 22

NOTES O'DONNELL

DATE 5/11/21

ROUTE US 23

H.C. AUBLE

WEATHER WINDY

COUNTY SENECA

R.C. NIESE

TEMP. 45°

TOWNSHIP BIG SPRING

SECTION 18

DWG BY RHOADES PID 85264

T 1 N R 13 E

TYPE MONUMENT P.K.NAIL

ON SURFACE - ~~BELOW~~ ON

OFFSET 0.3' LT : RT

11.8' TO LT EDGE PAVEMENT

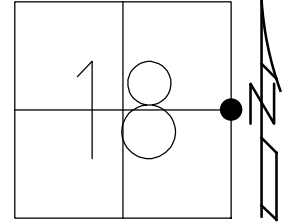
STATION: 210+12

HORZ.DATUM: NAD83 2011

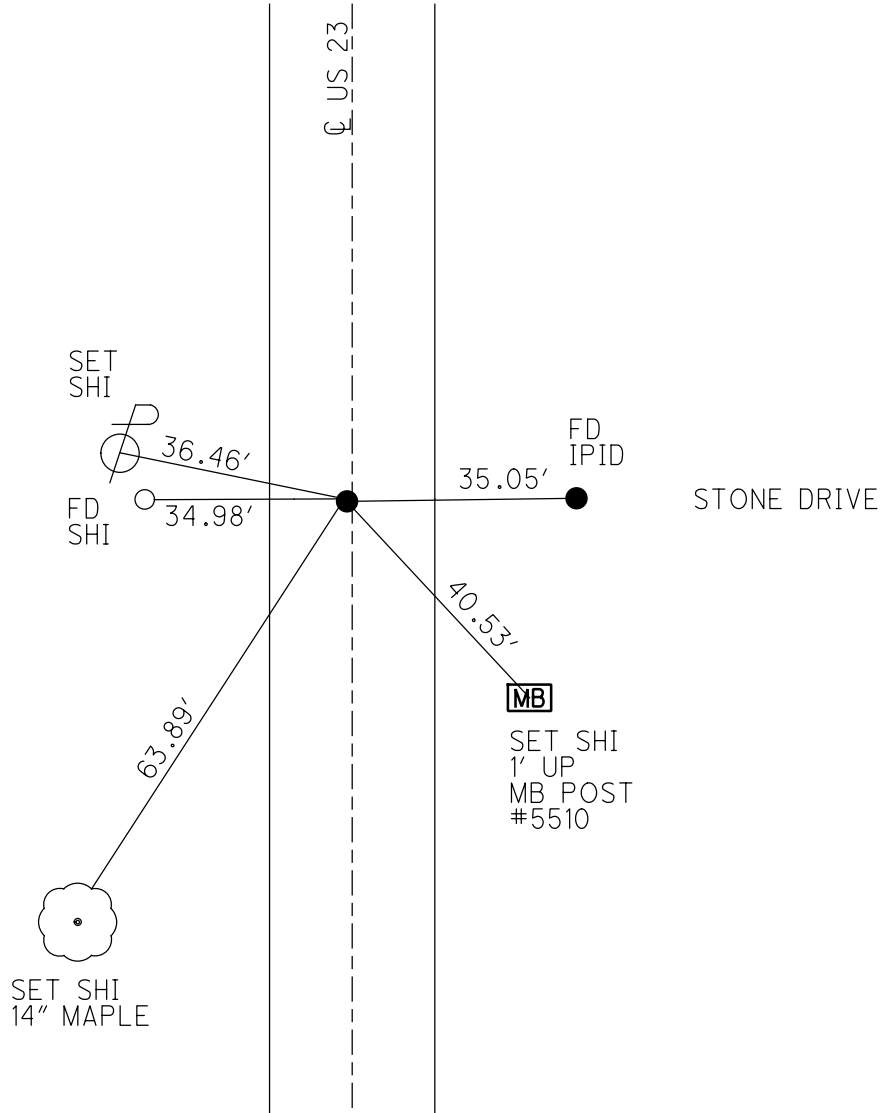
GEOID: NAVD88 2012A

GRID: NORTHING: 502830.815

EASTING: 1719812.923



RECORD: P.I.
 STA. 211+92.77
 $\Delta = 0^\circ 06' \text{ LT}$
 FD R.R.SPIKE
 1955
 FD SM.R.R.SPIKE
 7/21/89, CL
 SET P.K./WASHER
 10/31/89, SWH
 FD P.K./WASHER
 9/01/09
 FD P.K.NAIL
 REF13
 4/15/19
 8/16/19
 5/11/21, JFO
 SET MAG/WASHER
 12/10/21, DSA



O.D.O.T. DISTRICT 2 SURVEY OFFICE (USE ONLY)

PERSONNEL

REFERENCE NO. 13

SHEET 14 OF 22

NOTES LOEHRKE

DATE 7/21/89

ROUTE US 23

H.C. HOFFMAN

WEATHER HAZY

COUNTY SENECA

R.C. BARNHISEL

TEMP. 77°

TOWNSHIP BIG SPRING

DWG BY NASON

PID PT-SEN19

SECTION 18

T 1 N R 13 E

TYPE MONUMENT SM. R.R. SPIKE

ON SURFACE - ~~BELOW~~ ON

OFFSET \odot PAVEMENT 0.3' LT : ~~RT~~

11.8' TO LT. EDGE PAVEMENT

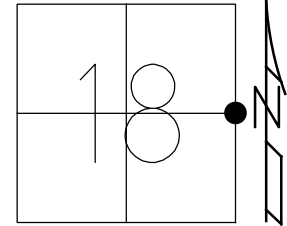
STATION: 210+12

HORZ.DATUM: NAD83 (2011)

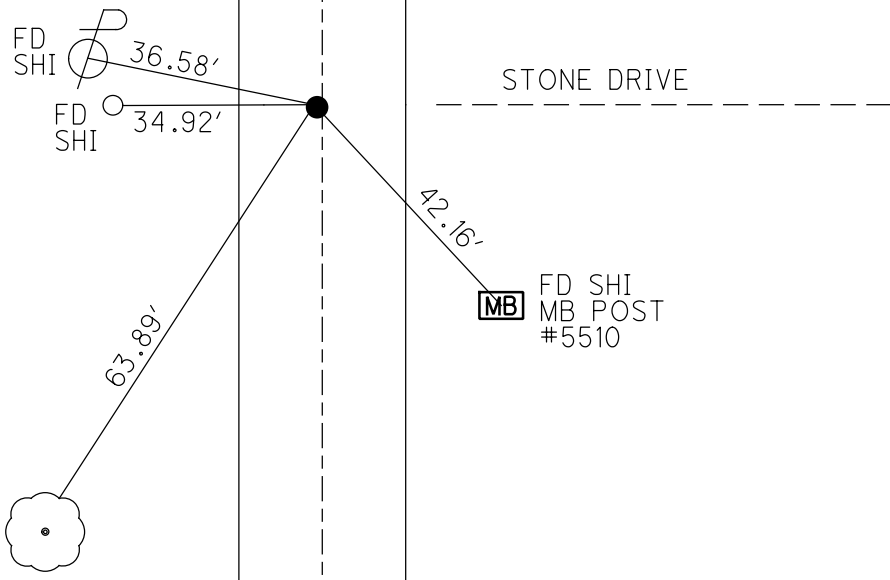
GEOID: 2012A

GRID: NORTHING: 502830.815

EASTING: 1719812.923



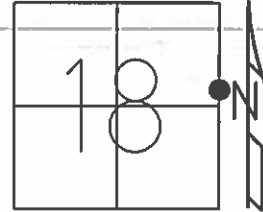
RECORD: P.I.
 STA. 211+92.77
 $\Delta = 0^\circ 06' \text{ LT}$
 FD R.R.SPIKE
 1955
 FD SM.R.R.SPIKE
 7/21/89, CL
 SET P.K./WASHER
 10/31/89, SWH
 FD P.K./WASHER
 9/01/09
 FD P.K.NAIL
 REF13
 4/15/19, JFO
 8/16/19, JFO



O.D.O.T. DISTRICT 2 SURVEY OFFICE (USE ONLY)

PERSONNEL _____ REFERENCE NO. 13 SHEET 14 OF 22
 NOTES LOEHRKE DATE 07-21-89 ROUTE US 23
 H.C. HOFFMAN WEATHER HAZY COUNTY SENECA
 R.C. BARNHISEL TEMP. +77 TOWNSHIP BIG SPRING
 SECTION 18
 T 1 N R 13 E

TYPE MONUMENT SM. R.R. SPIKE
 ON SURFACE - ~~BELOW~~ ON SURFACE
 LEFT - ℄ PAV'T - ~~RIGHT~~ 0.3'
11.8' TO LT. EDGE PAVEMENT
 S.L.M. 210+12
 GRID: NORTHING: _____ EASTING: _____



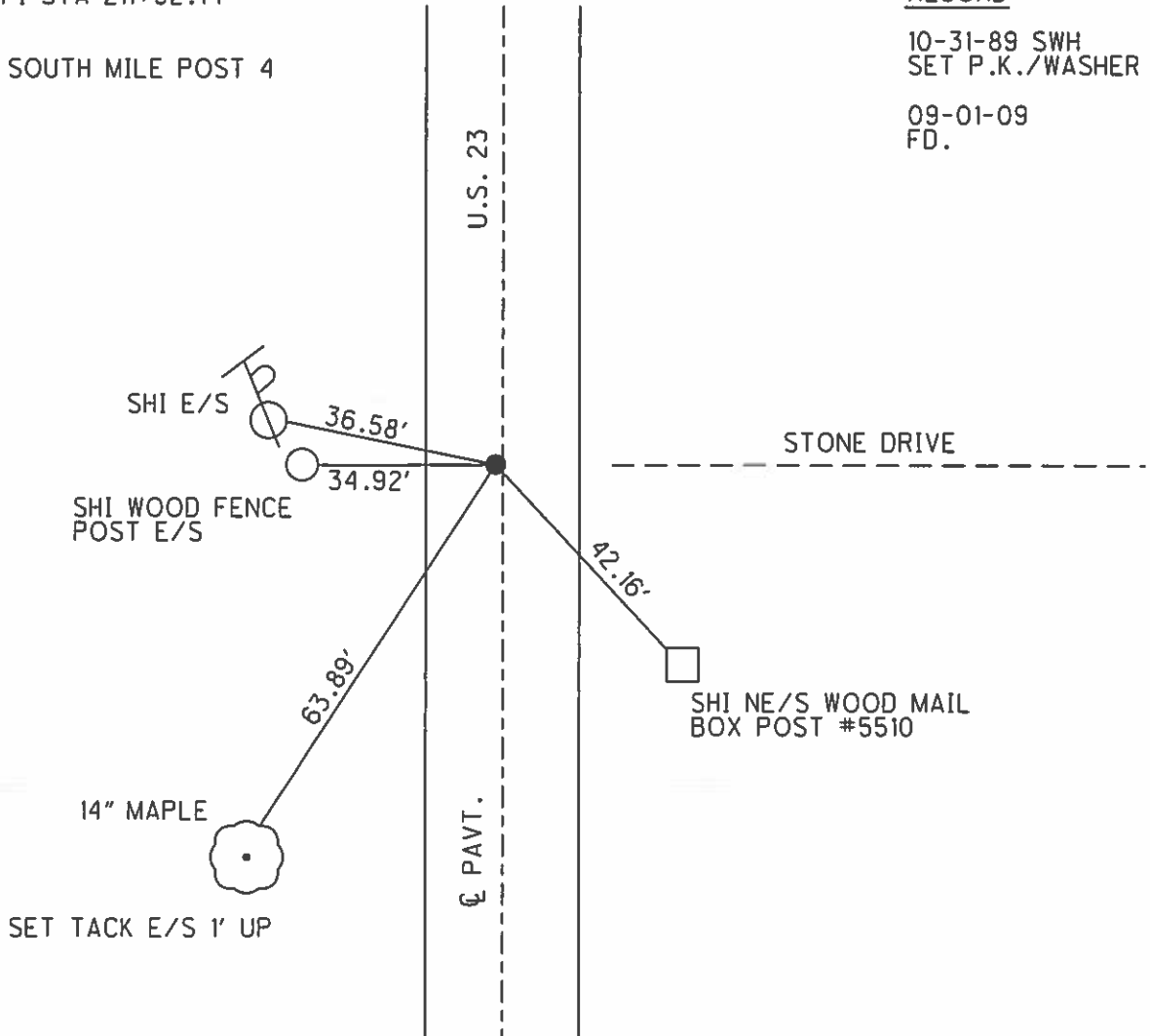
REC-PI STA 211+92.77

±42' SOUTH MILE POST 4

RECORD

10-31-89 SWH
 SET P.K./WASHER

09-01-09
 FD.



O.D.O.T. DISTRICT 2 SURVEY OFFICE

PERSONNEL _____

REFERENCE NO. 13

SHEET _____ OF _____

NOTES LOCHAKE

H.C. Hoffman

DATE 7-21-89

ROUTE U.S. 23

R.C. BARNHISEL

WEATHER HAZY

COUNTY SENECA

TEMP. +77

TOWNSHIP Big Springs

SECTION 18

T _____ R _____

TYPE MONUMENT Sm R.R. Spike

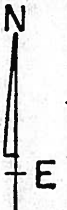
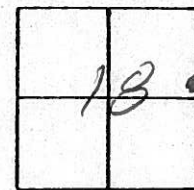
*Set P.K./washer
10-31-89 SWK*

ON SURFACE - ~~BEECH~~ Yes

LEFT - 0 PAV'T. - RIGHT 0.3

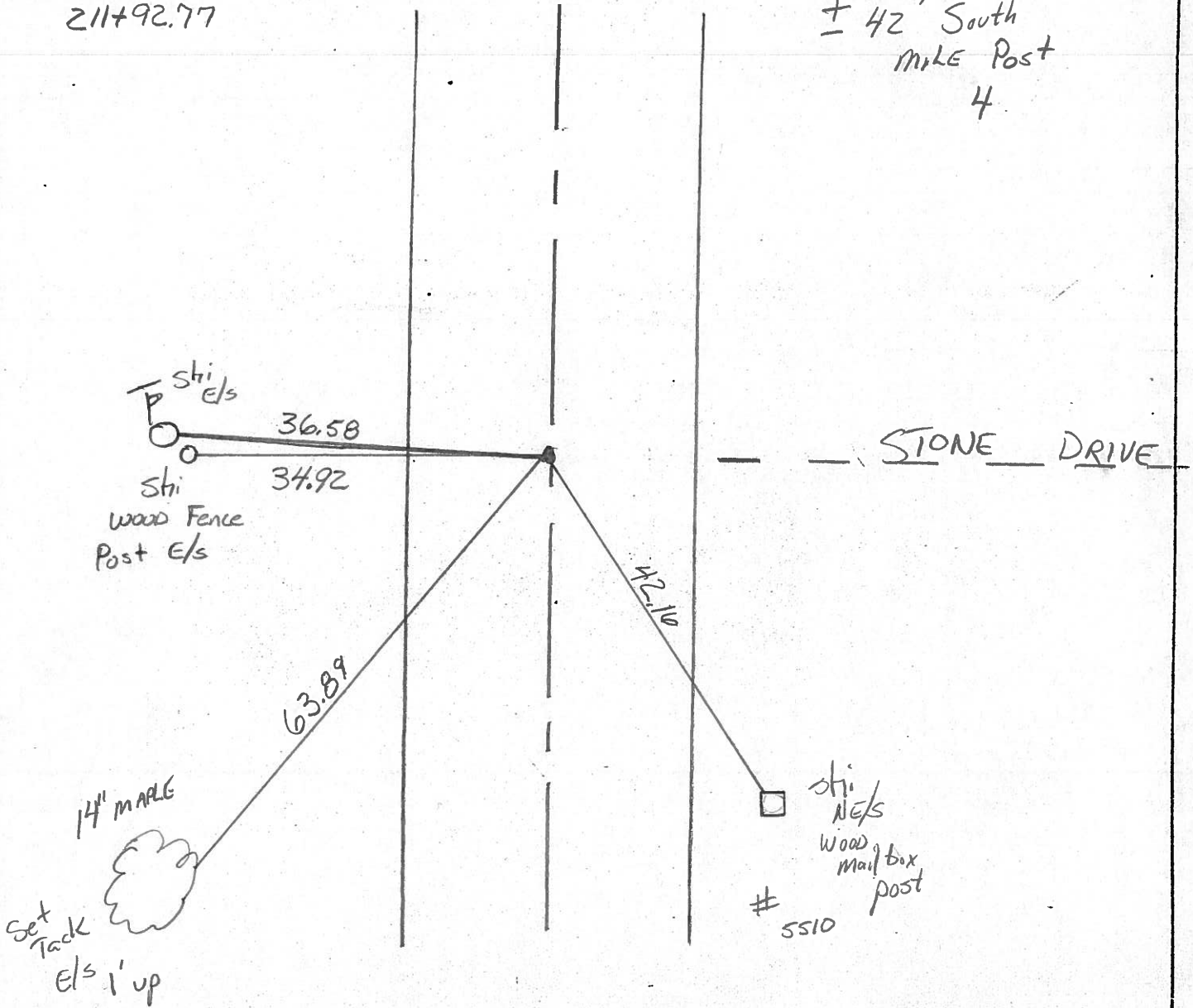
11.8 TO Lt. EDGE PAVEMENT

S.L.M. 210 +12



*Rec. - P.I. sta.
211+92.77*

*+ 42' South
MILE Post
4*



O.D.O.T. DISTRICT 2 SURVEY OFFICE

SHEET

OF

County Seneca S.R. -U.S. 23

Date 6-22-81

Township Big Spring

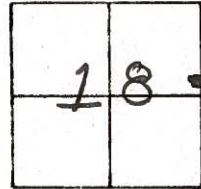
Weather Partly Cloudy

Section 18

Temp. +77°

T N, R E

Personnel Hoffman



Householder

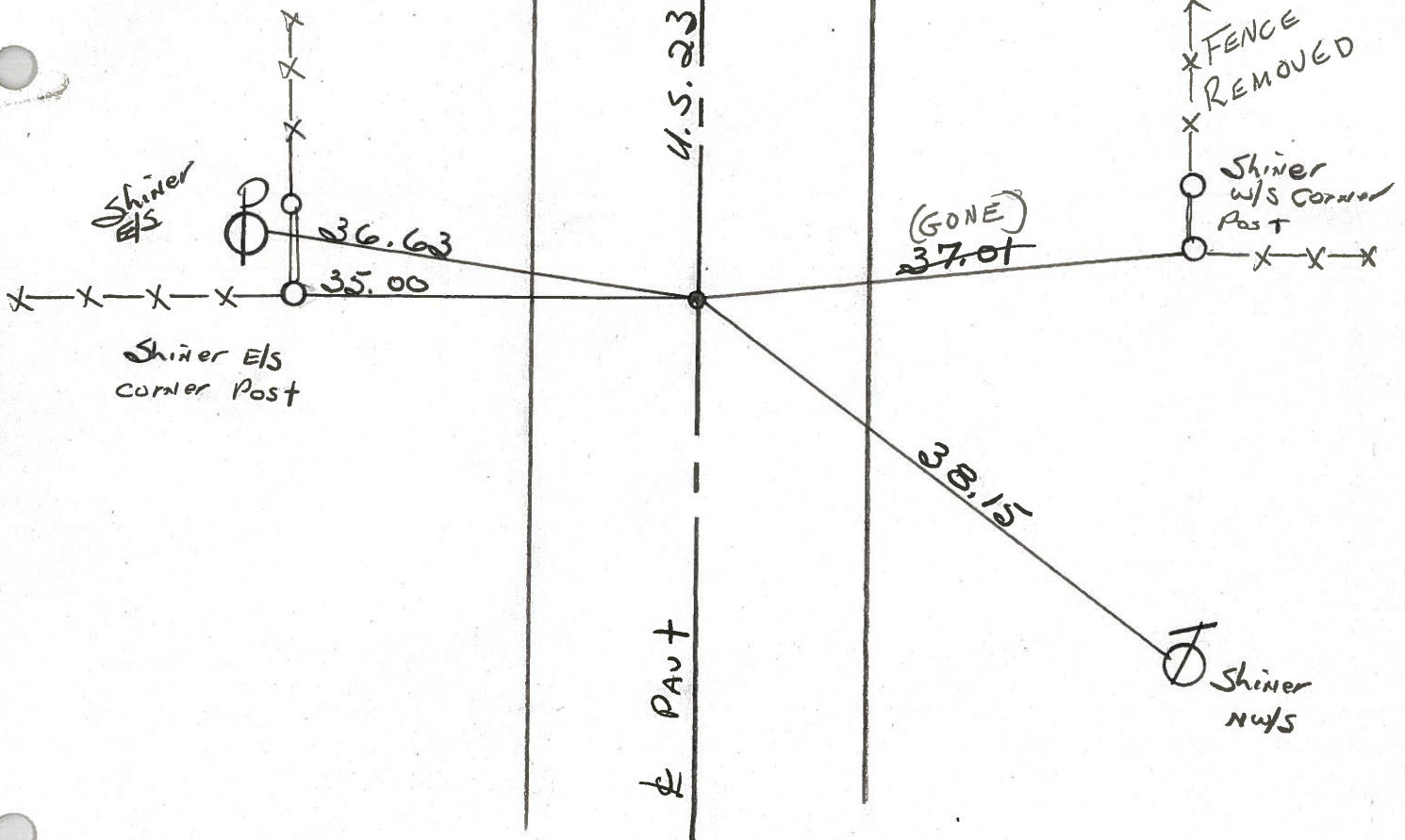
13

Fd. P.K. Nail/washer @ surface

PROJECT STA ± 210+12

± 42' S. of MILE MARKER
SEN 23
#4

SET SMALL R.R. SPK.
9-30-81 SWH



P.I. STA. 211 + 92.77 - Rec.

PERSONNEL	TITLE	PERSONNEL	TITLE	COUNTY	DATE	WEATHER	TEMP.
Schneider				Seneca	8-26-	Fair	80°
Mosser				U.S. 23			
Barbour				Wyandot Co. Line N.			
Potts							

DESCRIPTION Ties for Control Points LEFT CENTER LINE RIGHT JOB NO.

