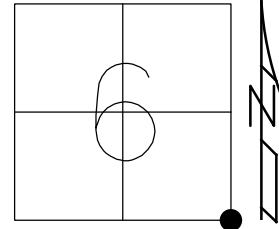


O.D.O.T. DISTRICT 2 SURVEY OFFICE (USE ONLY)

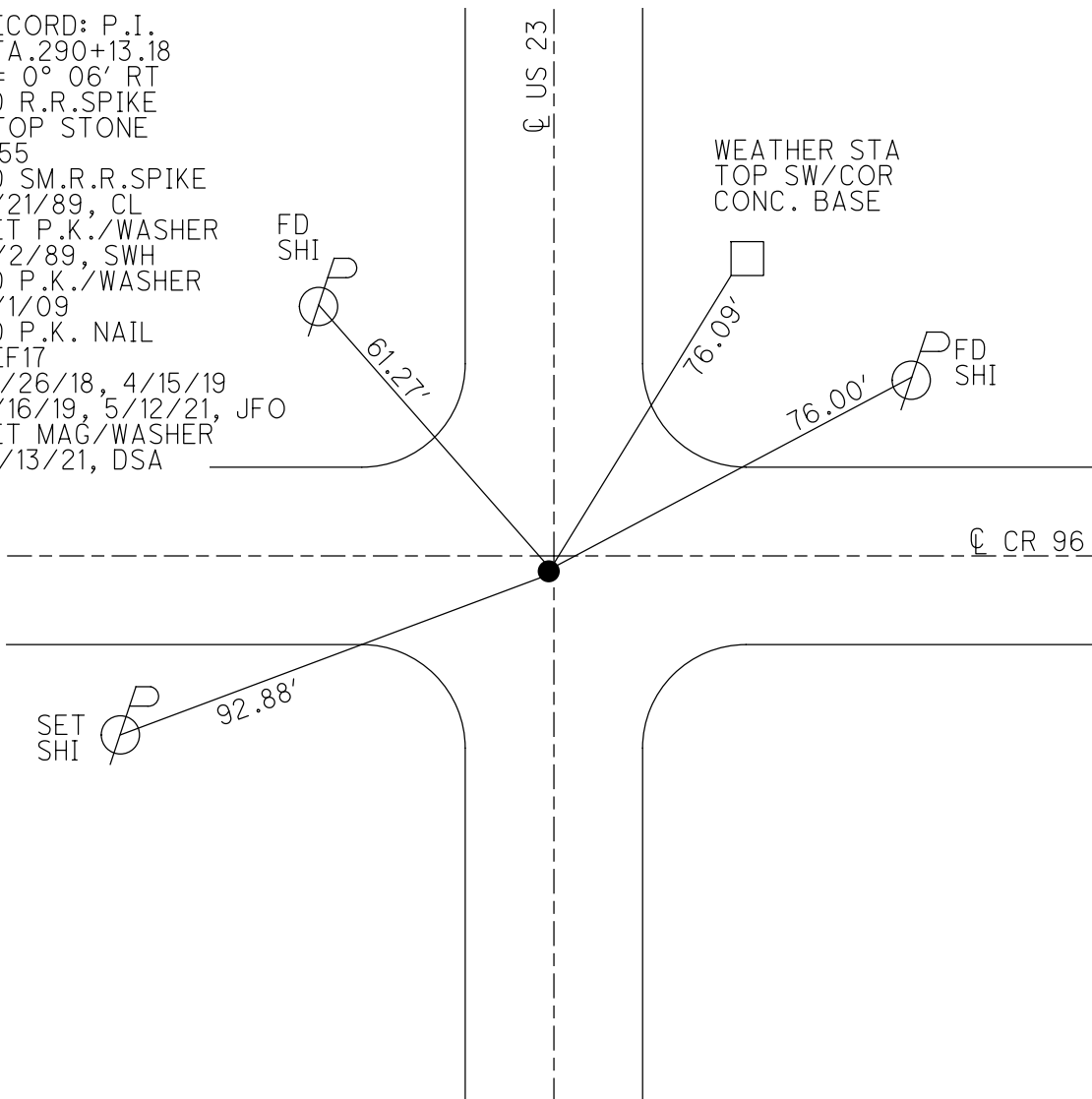
PERSONNEL _____ REFERENCE NO. 17 SHEET 18 OF 22
 NOTES O'DONNELL DATE 5/12/21 ROUTE US 23
 H.C. AUBLE WEATHER SUNNY COUNTY SENECA
 R.C. NIESE TEMP. 46° TOWNSHIP BIG SPRING
 DWG BY RHOADES PID 85264 SECTION 6
 T 1 N R 13 E

TYPE MONUMENT P.K./ WASHER
 ON SURFACE - ~~BELOW~~ ON
 OFFSET Q PAVEMENT 0.8' LT : ~~RT~~
- TO - EDGE PAVEMENT 3.0' S. OF Q CR 96
 STATION: 290+13.18



HORIZ.DATUM: NAD83 2011 GEOID: NAVD88 2012A
 GRID: NORTHING: 510648.969 EASTING: 1719849.431

RECORD: P.I.
 STA. 290+13.18
 $\Delta = 0^\circ 06' RT$
 FD R.R.SPIKE
 ATOP STONE
 1955
 FD SM.R.R.SPIKE
 7/21/89, CL
 SET P.K./WASHER
 11/2/89, SWH
 FD P.K./WASHER
 9/1/09
 FD P.K. NAIL
 REF17
 10/26/18, 4/15/19
 8/16/19, 5/12/21, JFO
 SET MAG/WASHER
 12/13/21, DSA



O.D.O.T. DISTRICT 2 SURVEY OFFICE (USE ONLY)

PERSONNEL

REFERENCE NO. 17

SHEET 18 OF 22

NOTES ELKHECHEN

DATE 10/29/18

ROUTE US 23

H.C. LEU

WEATHER CLOUDY

COUNTY SENECA

R.C. MILLER

TEMP. 46°

TOWNSHIP BIG SPRING

SECTION 6

DWG BY NASON

PID PT-SEN19

T 1 N R 13 E

TYPE MONUMENT P.K./ WASHER

ON SURFACE - ~~BELOW~~ ON

OFFSET C PAVEMENT 0.8' LT : ~~RT~~

- TO - EDGE PAVEMENT 3.0' S. OF C CR 96

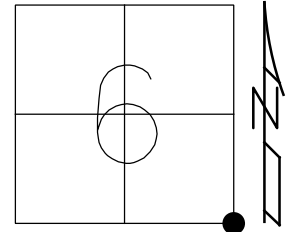
STATION: 290+13.18

HORZ.DATUM: NAD83 (2011)

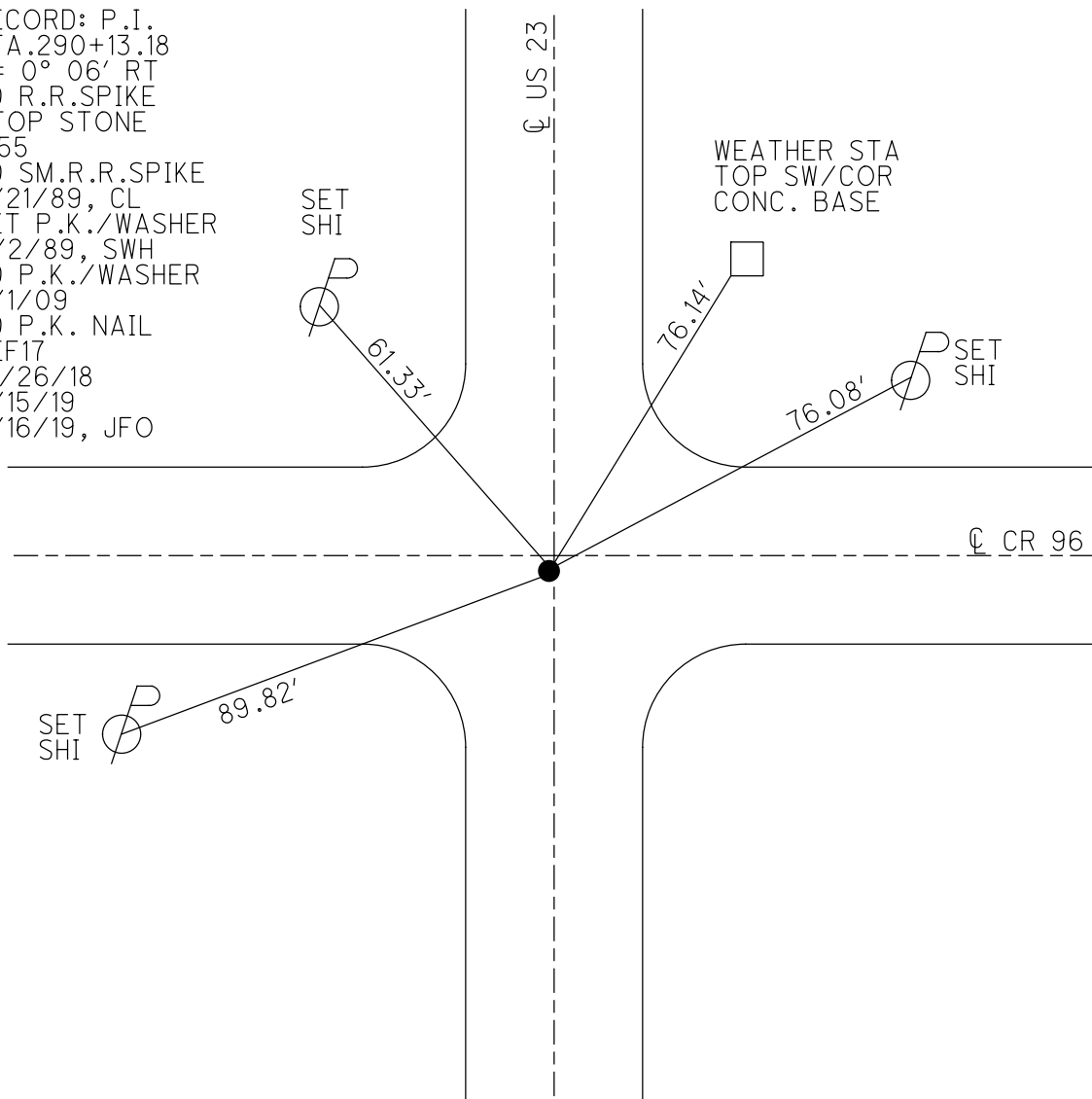
GEOID: 2012A

GRID: NORTHING: 510648.969

EASTING: 1719849.431



RECORD: P.I.
 STA. 290+13.18
 $\Delta = 0^\circ 06' \text{ RT}$
 FD R.R. SPIKE
 ATOP STONE
 1955
 FD SM.R.R. SPIKE
 7/21/89, CL
 SET P.K./WASHER
 11/2/89, SWH
 FD P.K./WASHER
 9/1/09
 FD P.K. NAIL
 REF17
 10/26/18
 4/15/19
 8/16/19, JFO



O.D.O.T. DISTRICT 2 SURVEY OFFICE (USE ONLY)

PERSONNEL _____ REFERENCE NO. 17 SHEET 18 OF 22

NOTES LOEHRKE DATE 07-21-89 ROUTE US 23
 H.C. HOFFMAN WEATHER HAZY COUNTY SENECA
 R.C. BARNHISEL TEMP. +77 TOWNSHIP BIG SPRING
 _____ SECTION 6
 _____ T 1 N R 13 E

TYPE MONUMENT SM. R.R. SPIKE

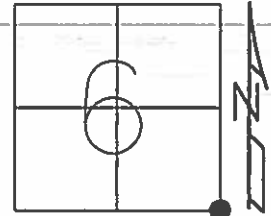
ON SURFACE - ~~BELOW~~ ON SURFACE

LEFT - ☉ PAV'T - ~~RIGHT~~ 0.4', 3.0' S. OF ☉ C.R. 96

_____ TO _____ EDGE PAVEMENT

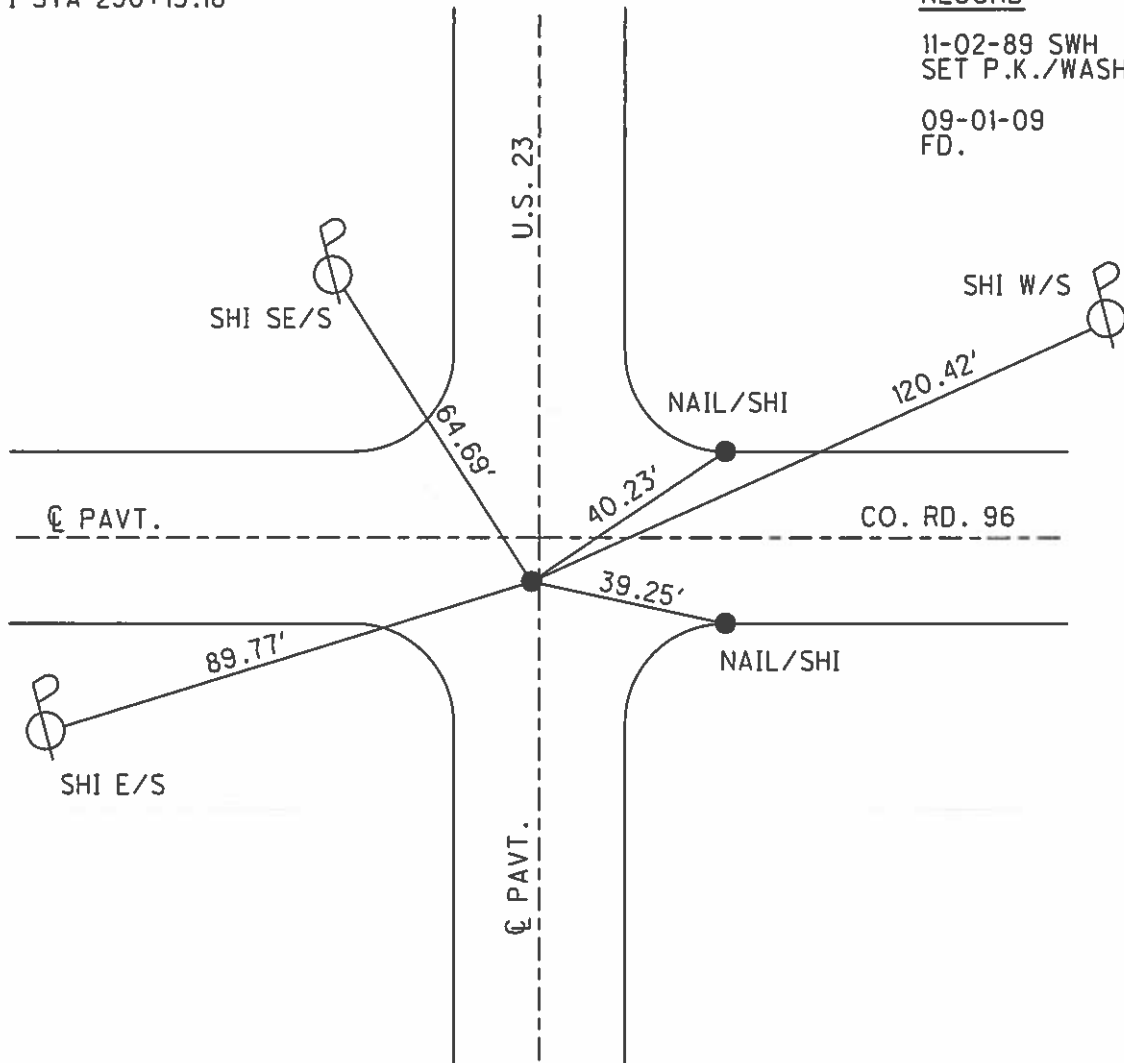
S.L.M. _____ 288+39

GRID: NORTHING: _____ EASTING: _____



REC-PI STA 290+13.18

RECORD
 11-02-89 SWH
 SET P.K./WASHER
 09-01-09
 FD.



O.D.O.T. DISTRICT 2 SURVEY OFFICE

PERSONNEL _____

REFERENCE NO. 17

SHEET _____ OF _____

NOTES LOHRKE

H.C. Hoffman

R.C. BARNHISEL

DATE 7-21-89

WEATHER HAZY

TEMP. +77

ROUTE U.S. 23

COUNTY SENECA

TOWNSHIP Big Spring

SECTION 6

T _____ R _____

TYPE MONUMENT Small R.R. Spike

ON SURFACE - ~~BELOW~~ Yes

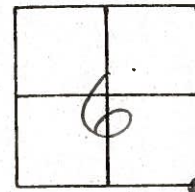
LEFT - & PAV'T. - RIGHT 0.4'

TO _____ EDGE PAVEMENT

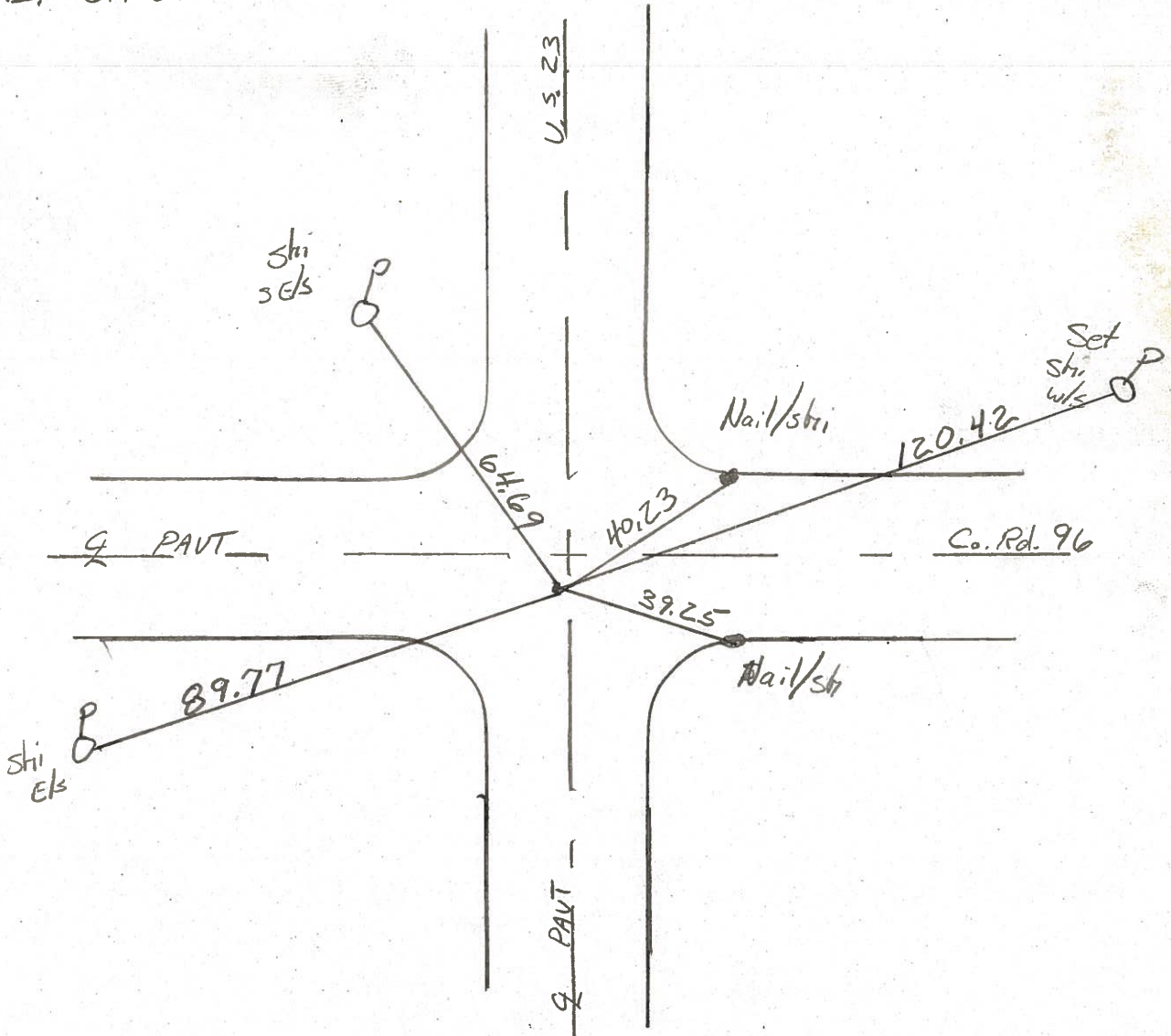
S.L.M. 288 +39

Set P.K./washer
11-2-89 SWM

810' South
& Road EAST



REC. P.I. Sta 290+13.18



O.D.O.T. DISTRICT 2 SURVEY OFFICE

SHEET OF

County Seneca S.R. U.S. 23

Township Big Springs

Section 6

T N, R E

Personnel Hoffman

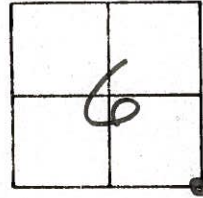
Householder

#17

Date 6-23-81

Weather Clear

Temp. +70°



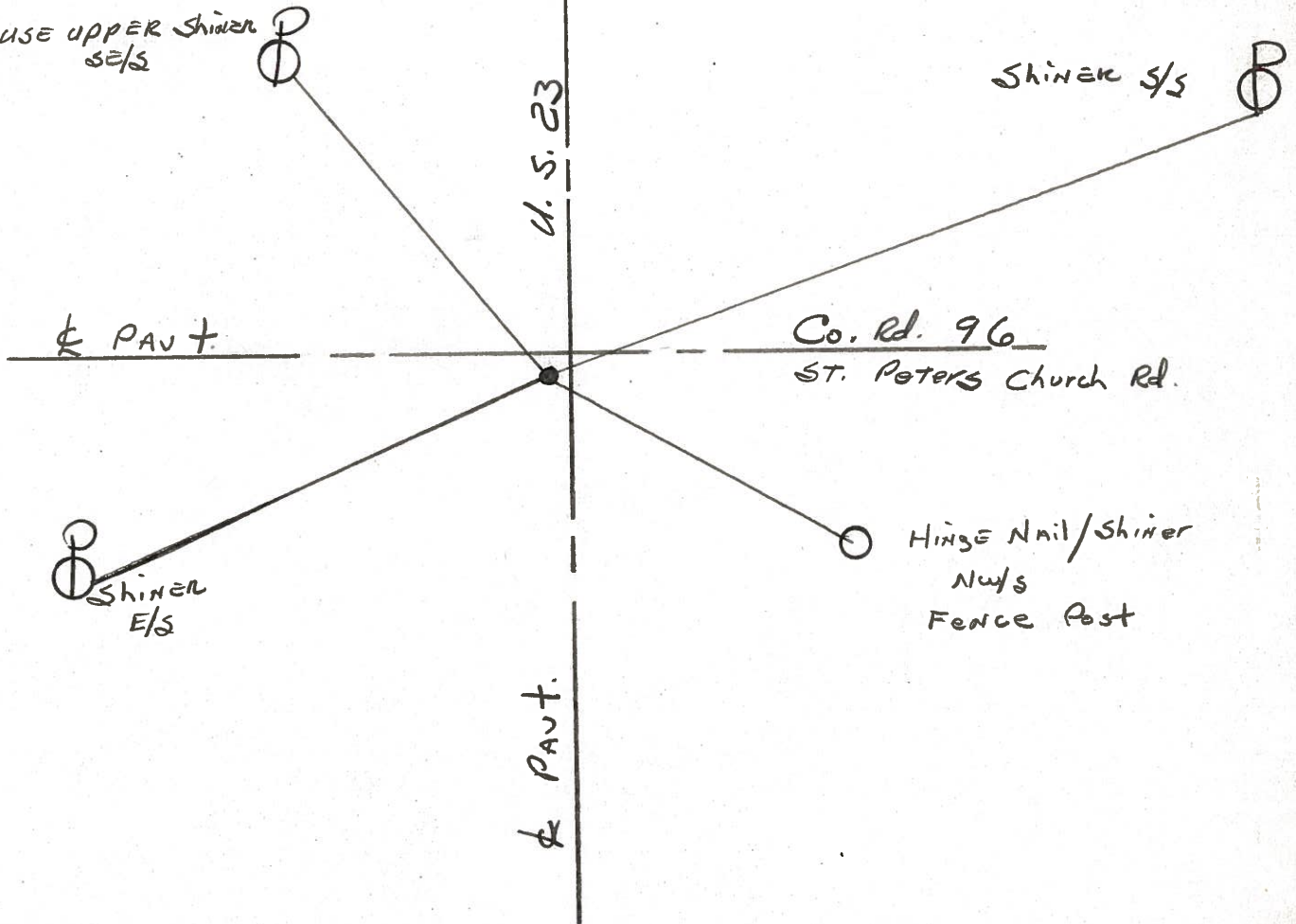
Fd. P.K. Nail/washer @ Surface

PROJECT STA ± 288+62

1' west of & PAUT U.S. 23
4' south of & PAUT Co. Rd. 96

SET SMALL R.R. SPK.
10-29-81 SWH

USE UPPER Shiner
SE/S



P.I. STA. 290+13.18 - REC.

PERSONNEL	TITLE	PERSONNEL	TITLE	COUNTY	DATE	WEATHER	TEMP	JOB NO.
Schneider				Seneca	8-26-66	Fair	80°	
Wasser				U.S. 23				
Barbour				Wyandot Co. line North				
Potts								

DESCRIPTION Ties for Control Points

