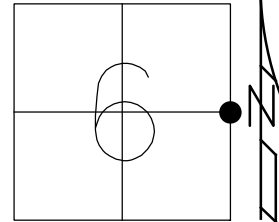


O.D.O.T. DISTRICT 2 SURVEY OFFICE (USE ONLY)

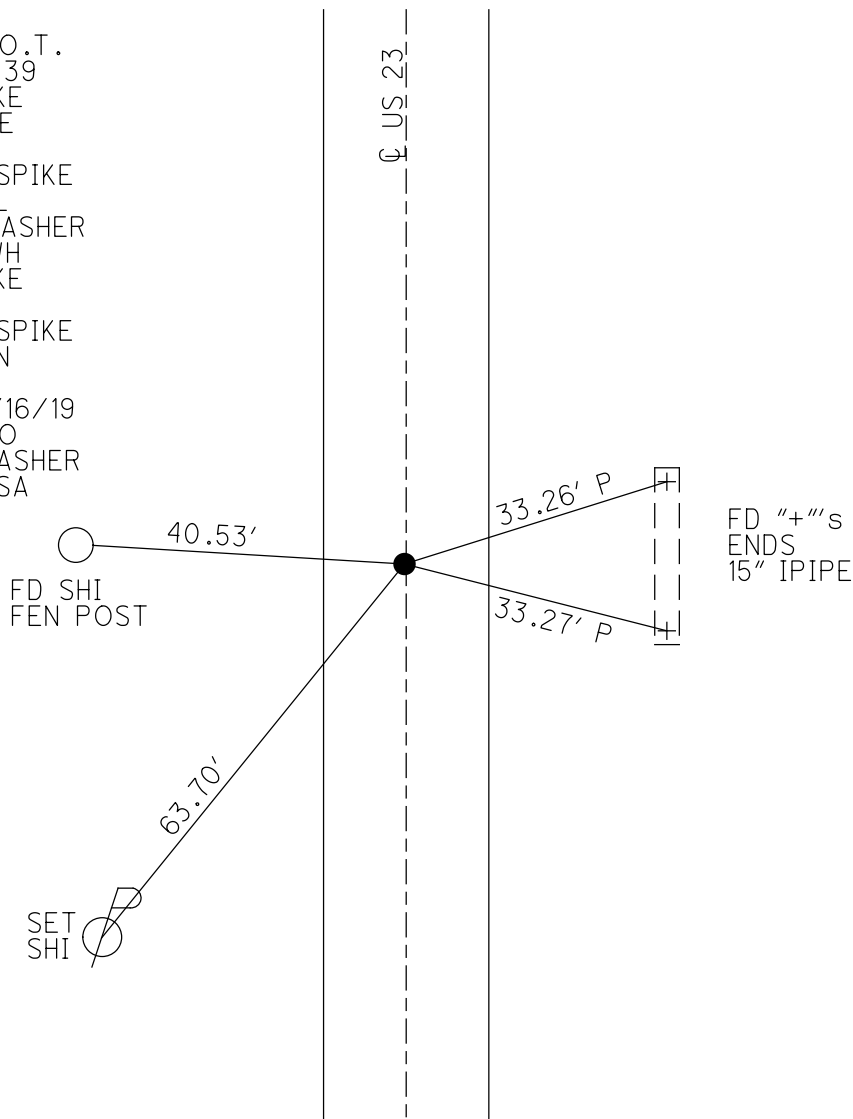
PERSONNEL \_\_\_\_\_ REFERENCE NO. 18 SHEET 19 OF 22  
 NOTES O'DONNELL DATE 5/12/21 ROUTE US 23  
 H.C. AUBLE WEATHER SUNNY COUNTY SENECA  
 R.C. NIESE TEMP. 44° TOWNSHIP BIG SPRING  
 DWG BY RHOADES PID 85264 SECTION 6  
 T 1 N R 13 E

TYPE MONUMENT SM.R.R.SPIKE  
 ON SURFACE - ~~BELOW~~ ON  
 OFFSET 0.2' LT : ~~RT~~  
11.4' TO LT EDGE PAVEMENT  
 STATION: 315+02



HORZ.DATUM: NAD83 2011 GEOID: NAVD88 2012A  
 GRID: NORTHING: 513306.817 EASTING: 1719853.556

RECORD: P.O.T.  
 STA 316+71.39  
 FD R.R.SPIKE  
 ATOP STONE  
 1955  
 FD SM.R.R.SPIKE  
 7/21/89, CL  
 SET P.K./WASHER  
 11/2/89, SWH  
 FD R.R.SPIKE  
 9/01/09  
 FD SM.R.R.SPIKE  
 2 1/2" DOWN  
 REF18  
 4/15/19, 8/16/19  
 5812/21, JFO  
 SET MAG/WASHER  
 12/13/21, DSA



O.D.O.T. DISTRICT 2 SURVEY OFFICE (USE ONLY)

PERSONNEL

REFERENCE NO. 18

SHEET 19 OF 22

NOTES LOEHRKE DATE 7/21/89  
 H.C. HOFFMAN WEATHER HAZY  
 R.C. BARNHISEL TEMP. 80°

ROUTE US 23  
 COUNTY SENECA  
 TOWNSHIP BIG SPRING  
 SECTION 6  
 T 1 N R 13 E

DWG BY NASON PID PT-SEN19

TYPE MONUMENT SM. R.R. SPIKE

ON SURFACE - ~~BELOW~~ ON

OFFSET Q PAVEMENT 0.2' LT : ~~RT~~  
11.4' TO LT. EDGE PAVEMENT

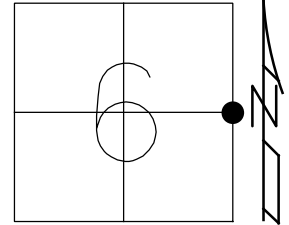
STATION: 315+02

HORIZ.DATUM: NAD83 (2011)

GEOID: 2012A

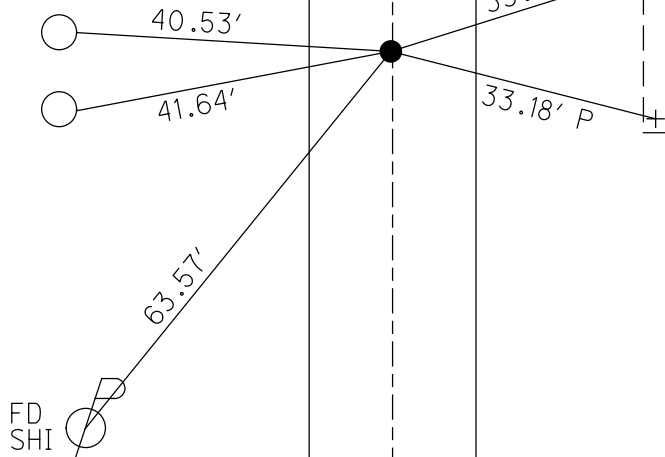
GRID: NORTHING: 513306.817

EASTING: 1719853.556



RECORD: P.O.T.  
 STA 316+71.39  
 FD R.R.SPIKE  
 ATOP STONE  
 1955  
 FD SM.R.R.SPIKE  
 7/21/89, CL  
 SET P.K./WASHER  
 11/2/89, SWH  
 FD R.R.SPIKE  
 9/01/09  
 FD SM.R.R.SPIKE  
 2 1/2" DOWN  
 REF18  
 4/15/19, JFO  
 8/16/19, JFO

FD SHI'S  
 FEN POSTS

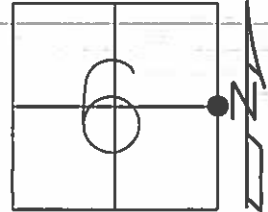


FD \"+\"'s  
 ENDS  
 15" IPIPE

**O.D.O.T. DISTRICT 2 SURVEY OFFICE (USE ONLY)**

PERSONNEL \_\_\_\_\_ REFERENCE NO. 18 SHEET 19 OF 22  
 NOTES LOEHRKE DATE 07-21-89 ROUTE US 23  
 H.C. HOFFMAN WEATHER HAZY COUNTY SENECA  
 R.C. BARNHISEL TEMP. +80 TOWNSHIP BIG SPRING  
 SECTION 6  
 T 1 N 13 E

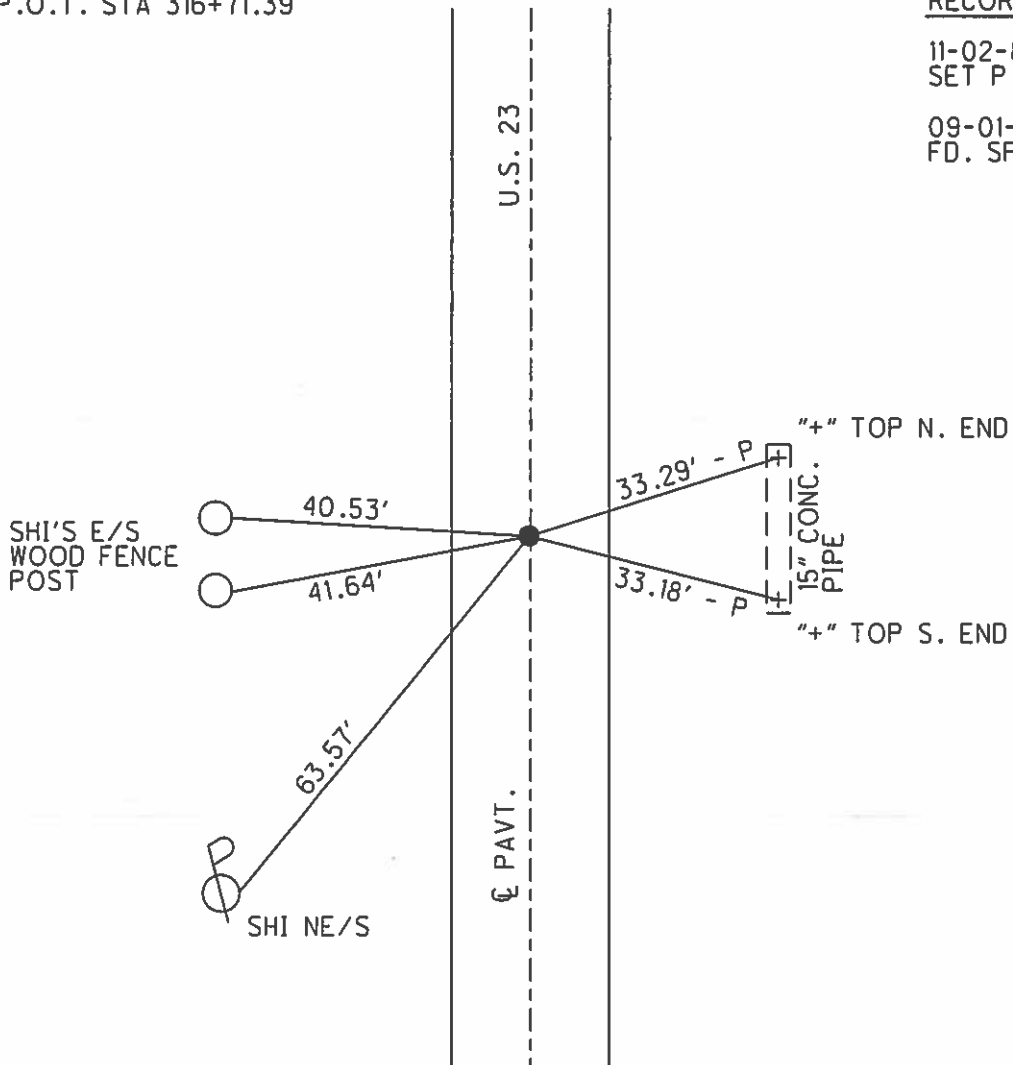
TYPE MONUMENT SM. R.R. SPIKE  
 ON SURFACE - ~~BELOW~~ ON SURFACE  
 LEFT - Q PAV'T - ~~RIGHT~~ 0.2'  
11.4' TO LT. EDGE PAVEMENT  
 S.L.M. 315+02



GRID: NORTHING: \_\_\_\_\_ EASTING: \_\_\_\_\_

REC P.O.T. STA 316+71.39

RECORD  
 11-02-89 SWH  
 SET P.K./WASHER  
 09-01-09  
 FD. SPIKE



O.D.O.T. DISTRICT 2 SURVEY OFFICE

PERSONNEL \_\_\_\_\_

REFERENCE NO. 18

SHEET \_\_\_\_\_ OF \_\_\_\_\_

NOTES LOEHRIKE

H.C. Hoffman

R.C. BARNHISEL

DATE 7-21-89

WEATHER HAZY

TEMP. +80

ROUTE U.S. 23

COUNTY SENECA

TOWNSHIP BIG SPRING

SECTION 6

T \_\_\_\_\_ R \_\_\_\_\_

TYPE MONUMENT Sm. R.P. Spike

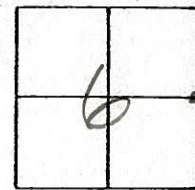
set P.K./WASHER  
11-02-89 SWH

ON SURFACE - BELOW Yes

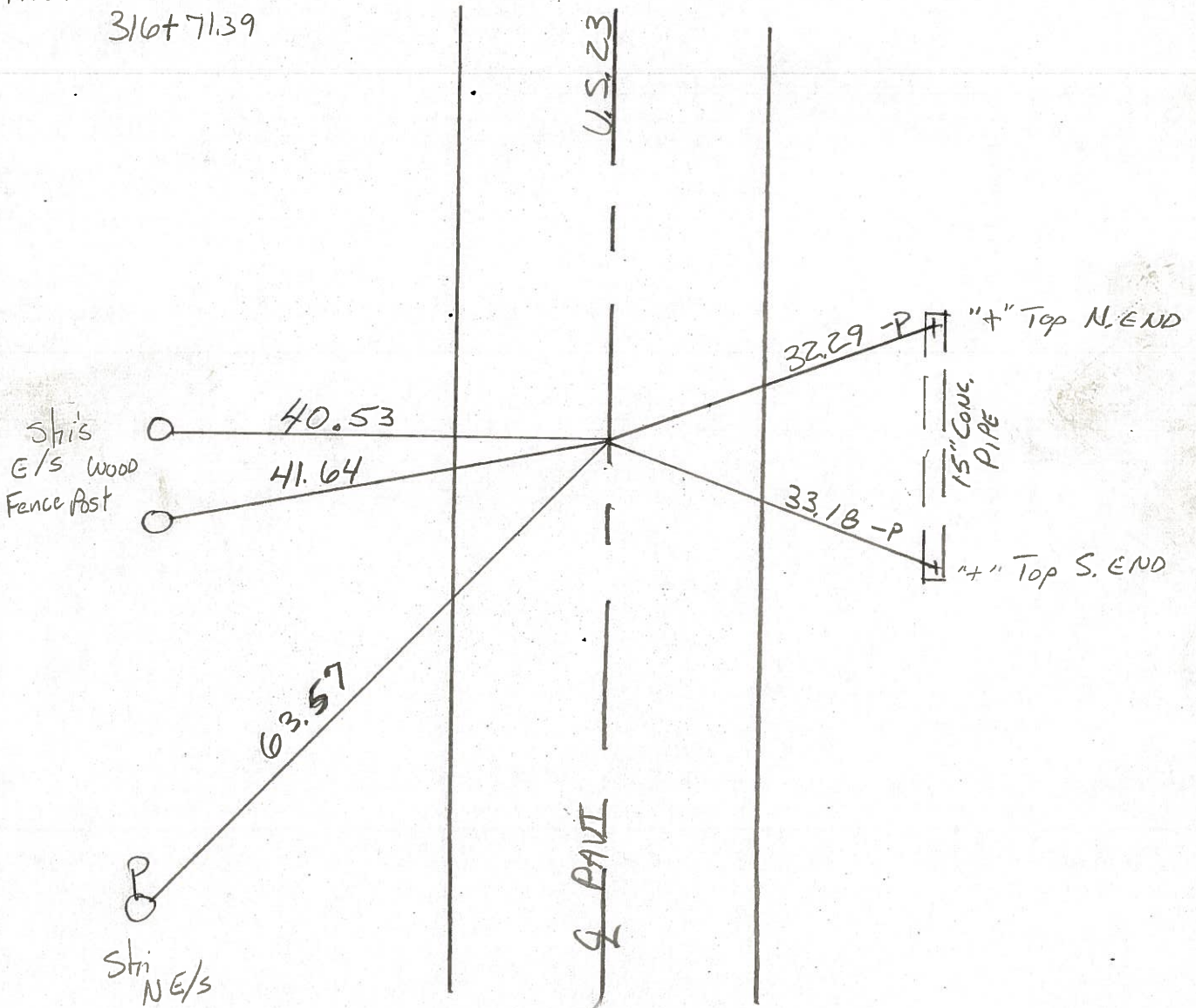
LEFT - 0 PAV'T. - RIGHT 0.2 LI

164 TO L EDGE PAVEMENT

S.L.M. 315 +02



REL. P.O.T sta  
316+71.39



O.D.O.T. DISTRICT 2 SURVEY OFFICE

SHEET \_\_\_\_\_ OF \_\_\_\_\_

County Seneca S.R. 4.5.23

Date 6-23-81

Township Big Spring

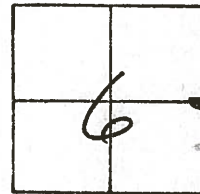
Weather clear

Section 6

Temp. +70°

T N, R E

Personnel Hoffman



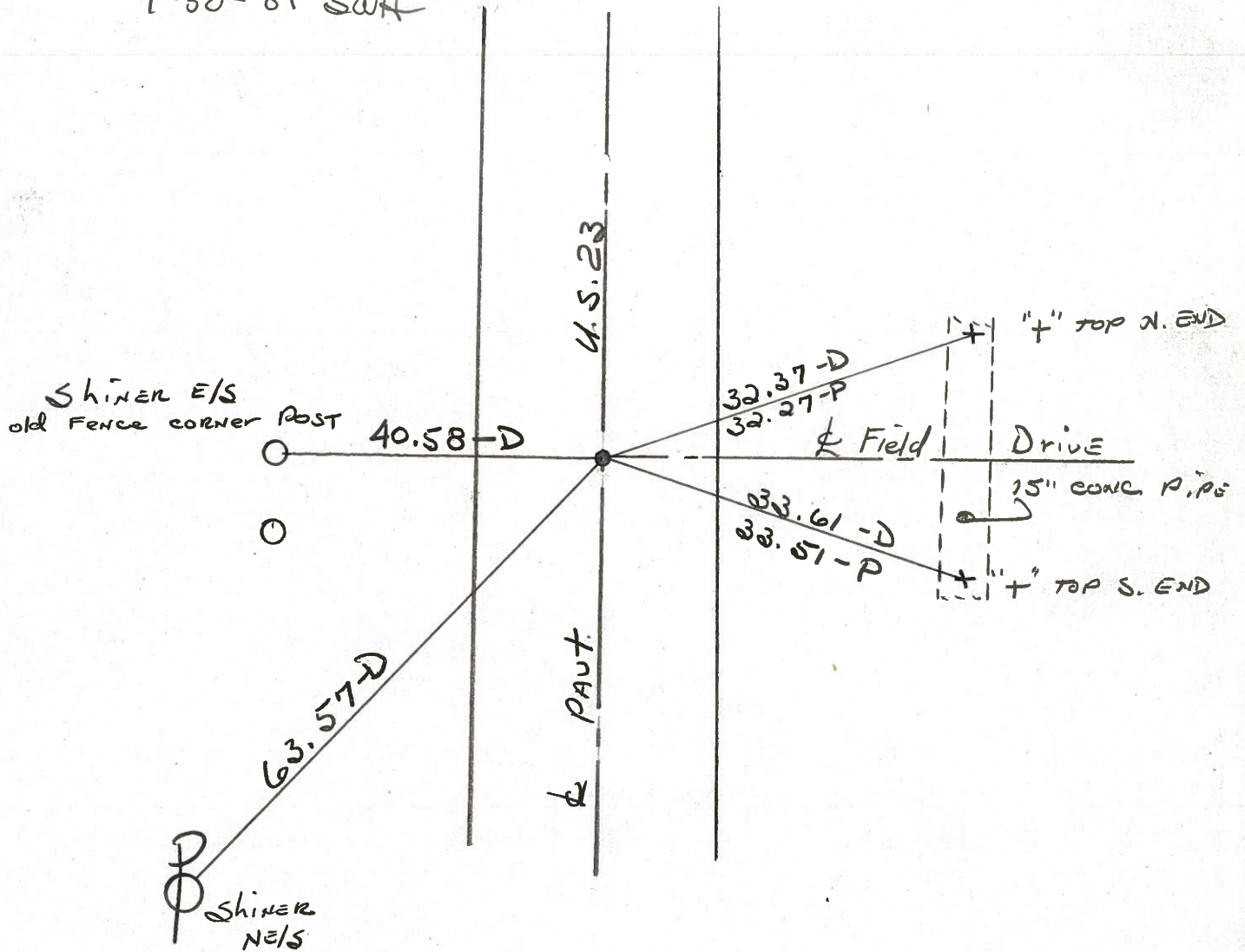
#18

Householder  
\_\_\_\_\_  
\_\_\_\_\_  
\_\_\_\_\_

Fd. P. K. Nail/washer @ surface  
@ ctr. of PAUT.

PROJECT STA ± 315+27

SET SMALL R.R. SPK.  
9-30-81 SWH



P.O.T. STA. 316+71.39-REC



PERSONNEL	TITLE	PERSONNEL	TITLE	COUNTY	DATE	WEATHER	TEMP.
Schneider				Seneca	8-26-	Fair	80°
Mosser				S. R. U.S. 23			
Barbour				SEC. Wyandot Co. line North			
Potts							

DESCRIPTION Ties for Control Points LEFT CENTER LINE RIGHT JOB NO.

