

O.D.O.T. DISTRICT 2 SURVEY OFFICE (USE ONLY)

PERSONNEL

REFERENCE NO. 19

SHEET 20 OF 22

NOTES O'DONNELL

DATE 5/12/21

ROUTE US 23

H.C. AUBLE

WEATHER SUNNY

COUNTY SENECA

R.C. NIESE

TEMP. 44°

TOWNSHIP BIG SPRING

SECTION 6

DWG BY RHOADES

PID 85264

T 1 N R 13 E

TYPE MONUMENT P.K.NAIL

ON ~~SURFACE~~ - BELOW 3"

OFFSET  $\varnothing$  PAVEMENT 0.6' LT : ~~RT~~

12.5' TO RT. EDGE PAVEMENT

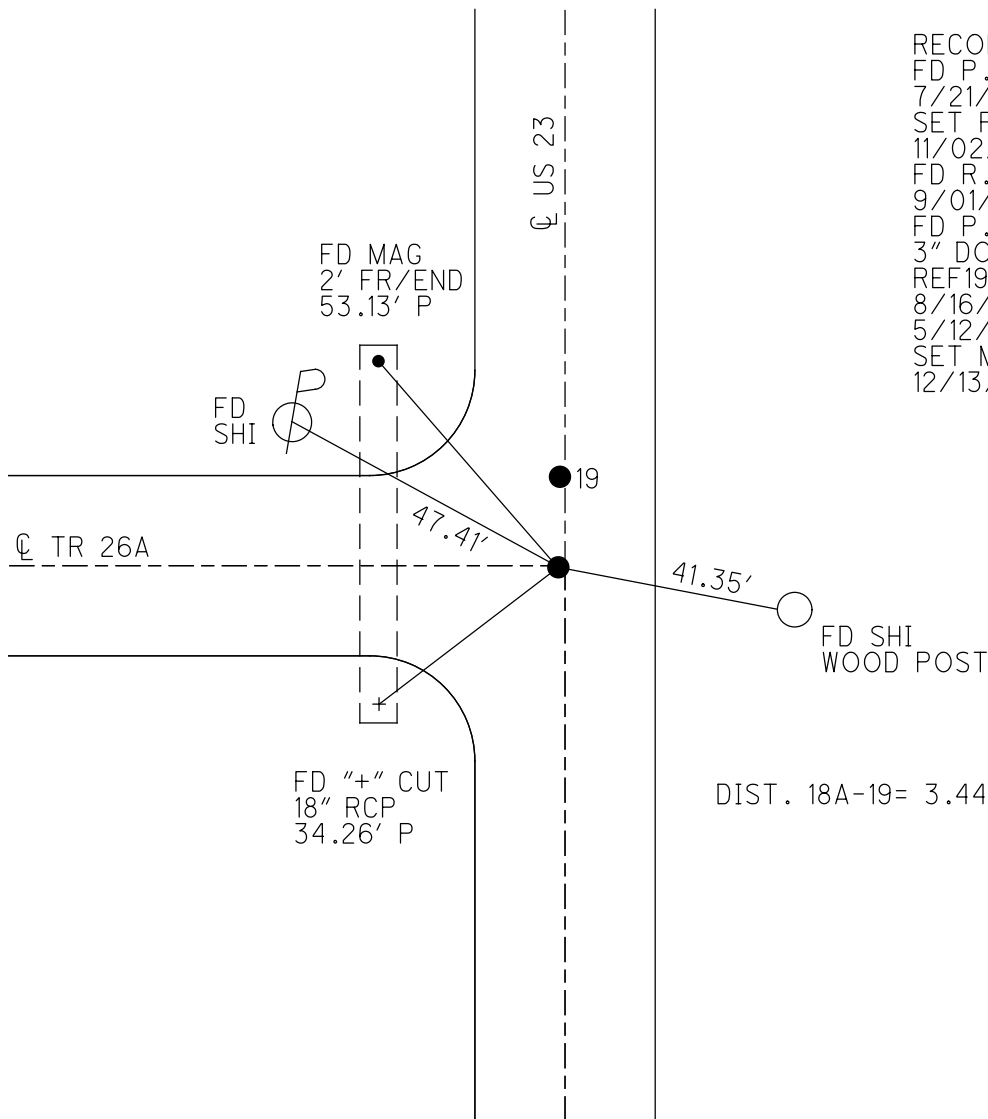
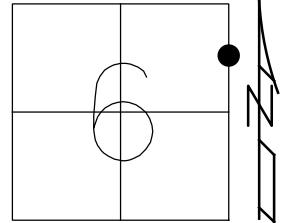
STATION: 330+24.06

HORZ.DATUM: NAD83 2011

GEOID: NAVD88 2012A

GRID: NORTHING: 514659.613

EASTING: 1719856.063



RECORD:  
 FD P.K.NAIL  
 7/21/89, CL  
 SET P.K./WASHER  
 11/02/89, SWH  
 FD R.R.SPIKE  
 9/01/09  
 FD P.K.NAIL  
 3" DOWN  
 REF19  
 8/16/19  
 5/12/21, JFO  
 SET MAG/WASHER  
 12/13/21, DSA

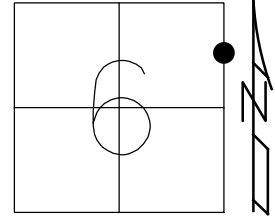
DIST. 18A-19= 3.44'

O.D.O.T. DISTRICT 2 SURVEY OFFICE (USE ONLY)

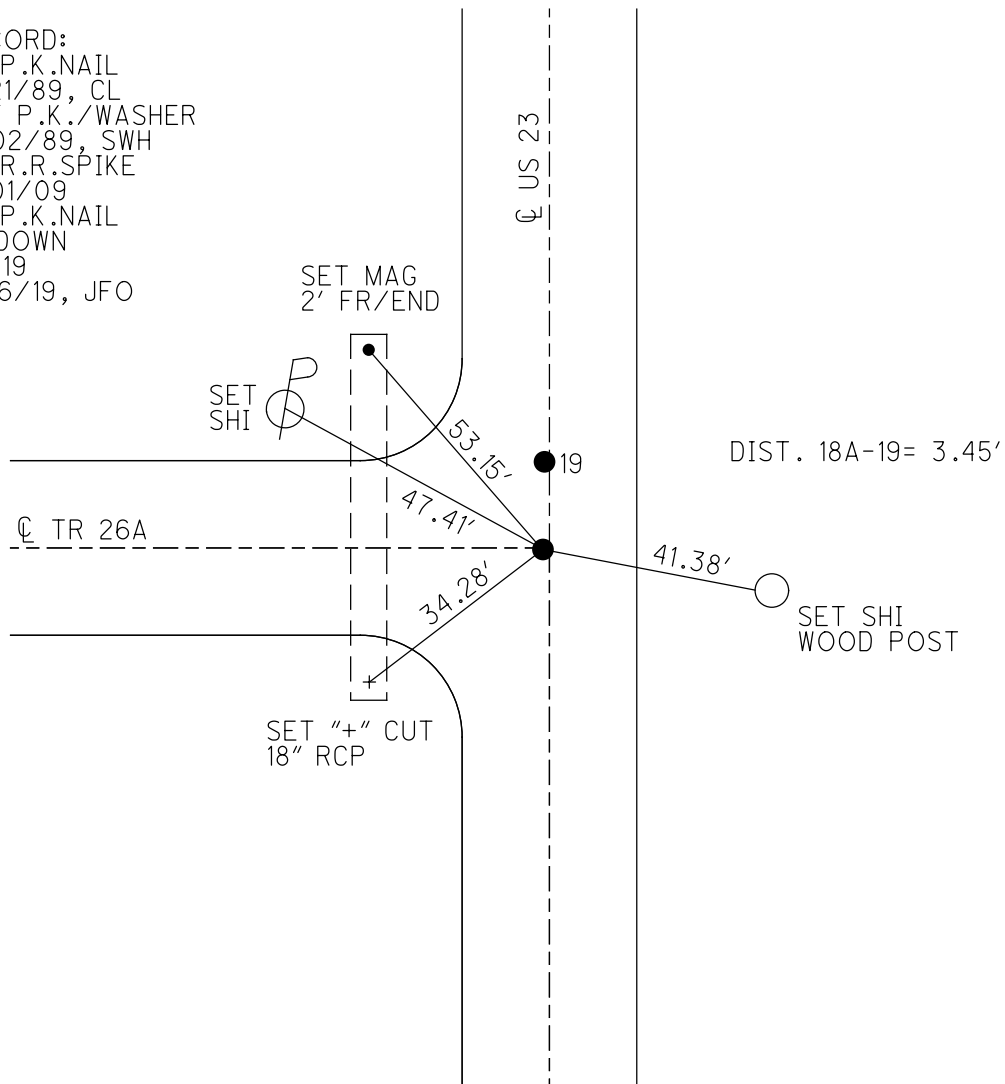
PERSONNEL \_\_\_\_\_ REFERENCE NO. 18 A SHEET 21 OF 22  
 NOTES ELKHECHEN DATE 10/30/18 ROUTE US 23  
 H.C. LEU WEATHER CLOUDY COUNTY SENECA  
 R.C. MILLER TEMP. 43° TOWNSHIP BIG SPRING  
 DWG BY NASON PID PT-SEN19 SECTION 6  
 T 1 N R 13 E

TYPE MONUMENT P.K.NAIL  
 ON ~~SURFACE~~ - BELOW 3"  
 OFFSET CL PAVEMENT 0.6' LT : ~~RT~~  
12.5' TO RT. EDGE PAVEMENT  
 STATION: 330+24.06

HORZ.DATUM: NAD83 (2011) GEOID: 2012A  
 GRID: NORTHING: 514659.613 EASTING: 1719856.063



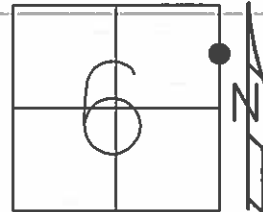
RECORD:  
 FD P.K.NAIL  
 7/21/89, CL  
 SET P.K./WASHER  
 11/02/89, SWH  
 FD R.R.SPIKE  
 9/01/09  
 FD P.K.NAIL  
 3" DOWN  
 REF19  
 8/16/19, JFO



O.D.O.T. DISTRICT 2 SURVEY OFFICE (USE ONLY)

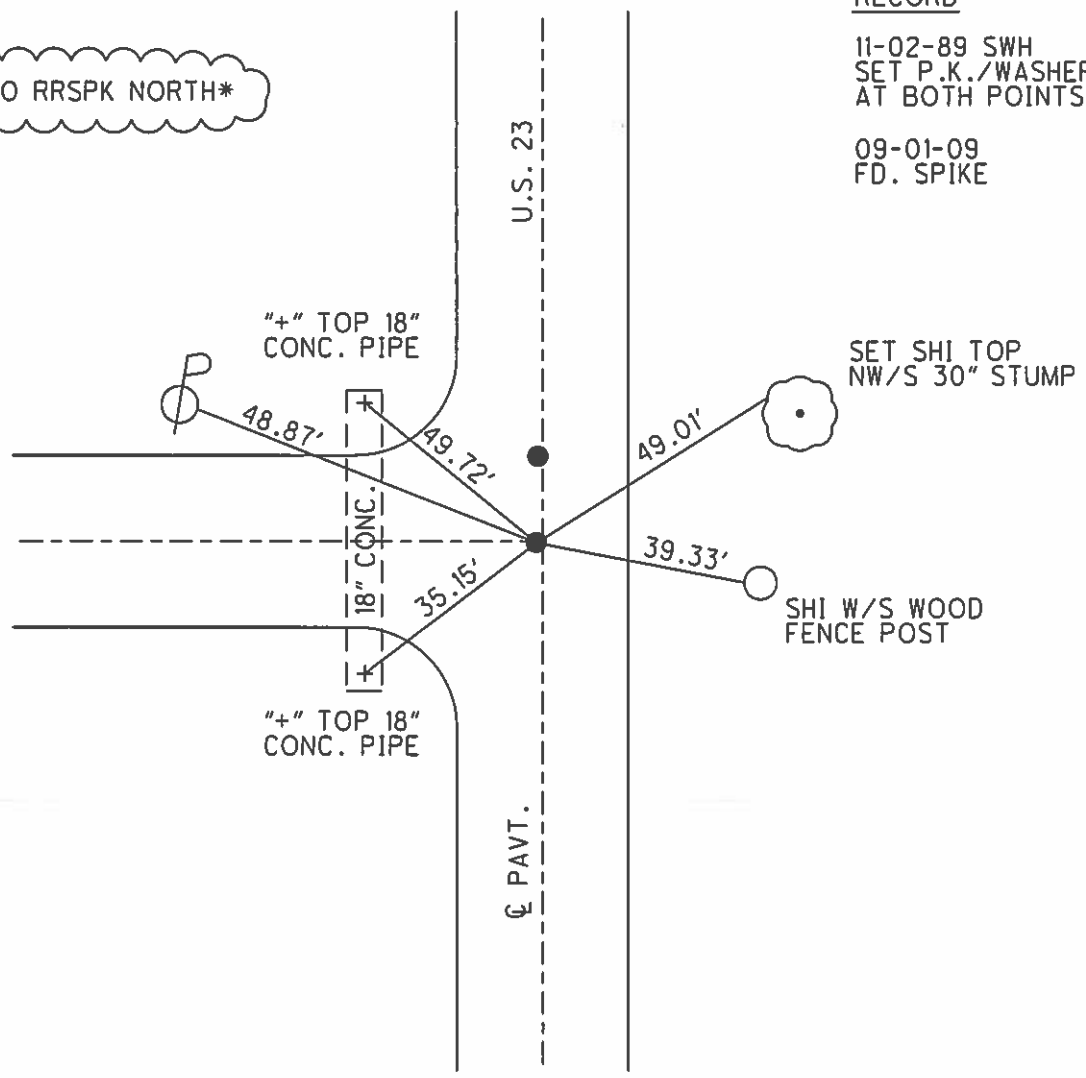
PERSONNEL \_\_\_\_\_ REFERENCE NO. 19 SHEET 21 OF 22  
 NOTES LOEHRKE DATE 07-21-89 ROUTE US 23  
 H.C. HOFFMAN WEATHER HAZY COUNTY SENECA  
 R.C. BARNHISEL TEMP. +80 TOWNSHIP BIG SPRING  
 \_\_\_\_\_ SECTION 6  
 \_\_\_\_\_ T 1 N R 13 E

TYPE MONUMENT \_\_\_\_\_ P.K. \_\_\_\_\_  
 ON SURFACE - ~~BELOW~~ ON SURFACE \_\_\_\_\_  
 LEFT - CL PAV'T - ~~RIGHT~~ 0.6'  
12.5' TO RT. EDGE PAVEMENT  
 S.L.M. 328+59  
 GRID: NORTHING: \_\_\_\_\_ EASTING: \_\_\_\_\_



\*3.45' TO RRSPK NORTH\*

RECORD  
 11-02-89 SWH  
 SET P.K./WASHER  
 AT BOTH POINTS  
 09-01-09  
 FD. SPIKE



**O.D.O.T. DISTRICT 2 SURVEY OFFICE**

PERSONNEL \_\_\_\_\_

REFERENCE NO. 19

SHEET \_\_\_\_\_ OF \_\_\_\_\_

NOTES LOEHRKE

H.C. Hoffman

R.C. BARNHISEL

DATE 7-21-89

WEATHER HAZY

TEMP. +80

ROUTE U.S. 23

COUNTY SENECA

TOWNSHIP BIG SPRING

SECTION 6

T. \_\_\_\_\_ R. \_\_\_\_\_

TYPE MONUMENT A Small R.R. Spikes

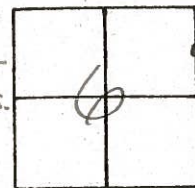
ON SURFACE - BELOW YES

LEFT - C PAV'T. - RIGHT 0.6

12.5 TO Rt EDGE PAVEMENT

S.L.M. Pt B - 328+59

B - P.K.  
Set P.K./washer  
at Bord points.  
11-2-89 SWH

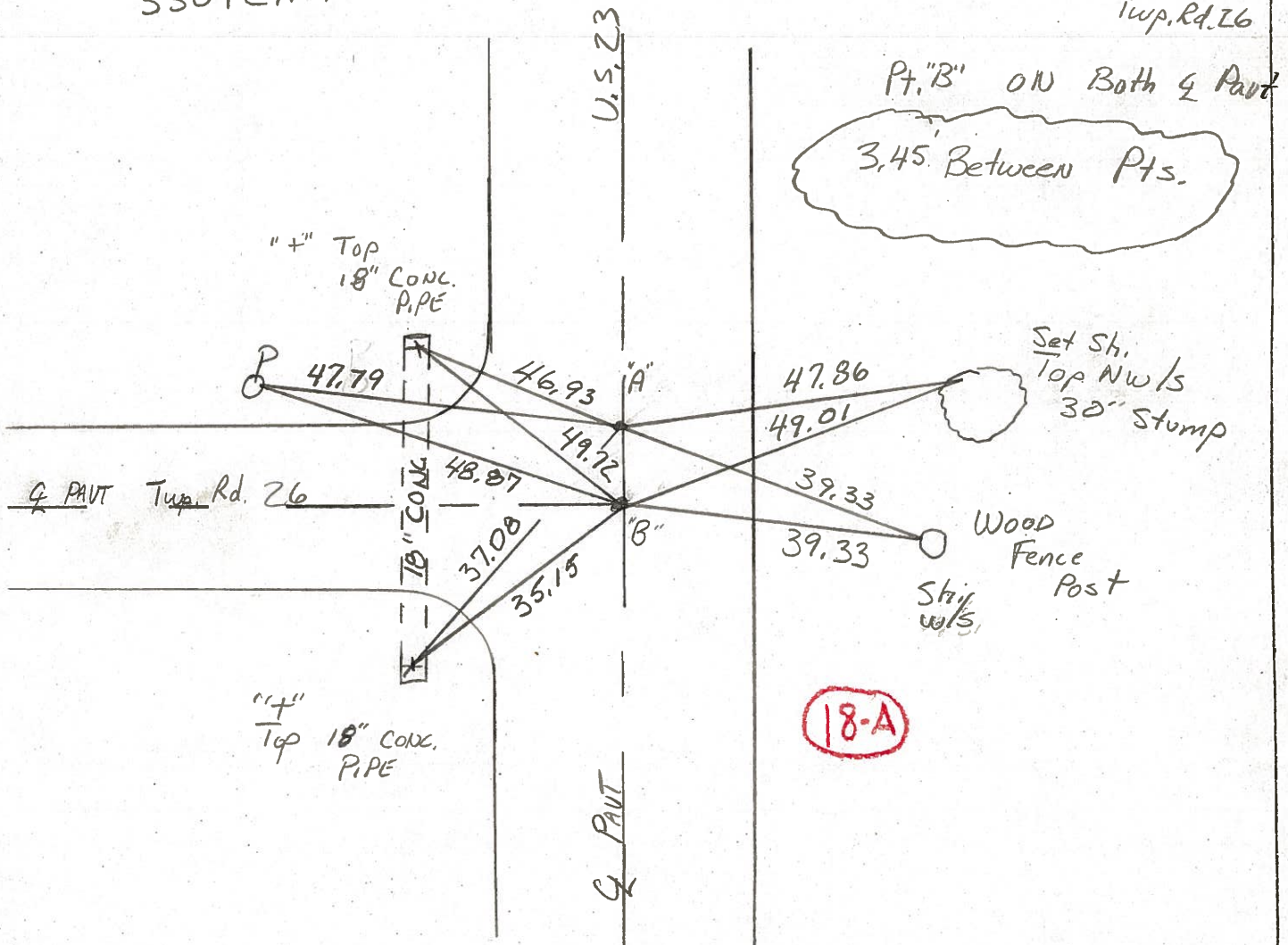


Rec. Pt "A" P.I. Sta  
330+27.51

Pt "A" ON Q PAVT U.S. 23  
ON N. EDGE PAVT  
Twp. Rd. 26

Pt. "B" ON Both Q Pavt

3.45' Between Pts.



**18-A**

Q.D.O.T. DISTRICT 2 SURVEY OFFICE

Sht. \_\_\_ of \_\_\_

County Seneca S.R., U.S. 23

Date 6-23-81

Township Big Spring

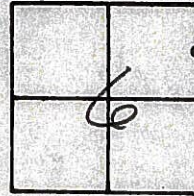
Weather Clear

Section 6

Temp. +70°

T N, R E

Personnel Hoffman  
Householder



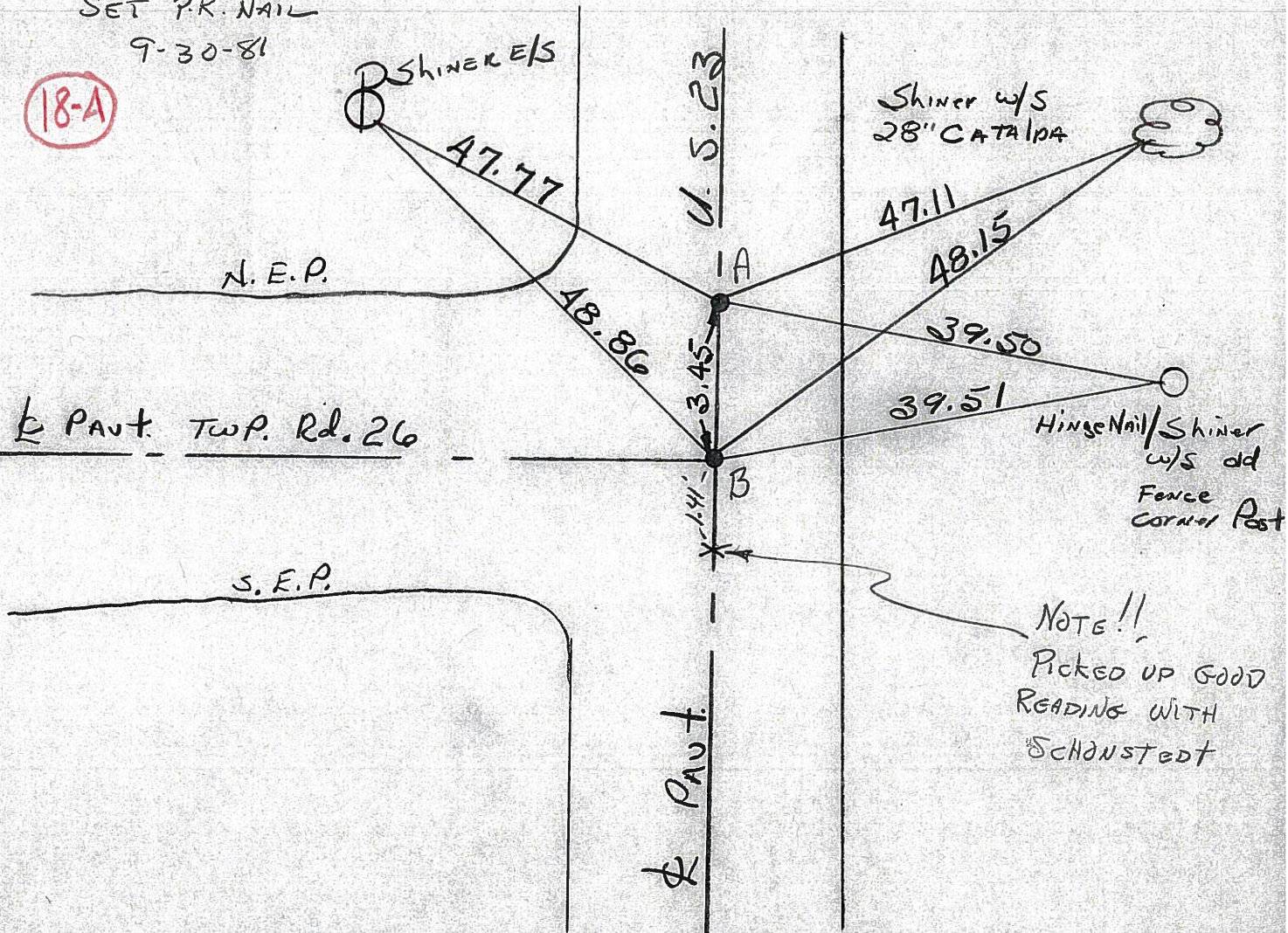
#19

Pt. "A" Fd. P.K. Nail/Washer @ surface PROJECT STA ± 328+80  
 @ CTR of PAUT US 23 SET SMALL R.R. SPK. 9-30-81 SWN  
 @ N. Edge PAUT Twp Rd 26

Pt. "B" Fd. P.K. Nail @ Surface  
 @ CTR. of PAUTS, US 23 & TWP 26

SET P.K. NAIL  
 9-30-81

18-A



NOTE!!  
 Picked up GOOD  
 READING WITH  
 'SCHONSTEDT'

Pt. "A" = P. I. STA. 330 + 27.51 - REC