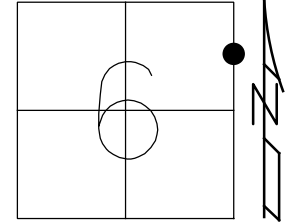


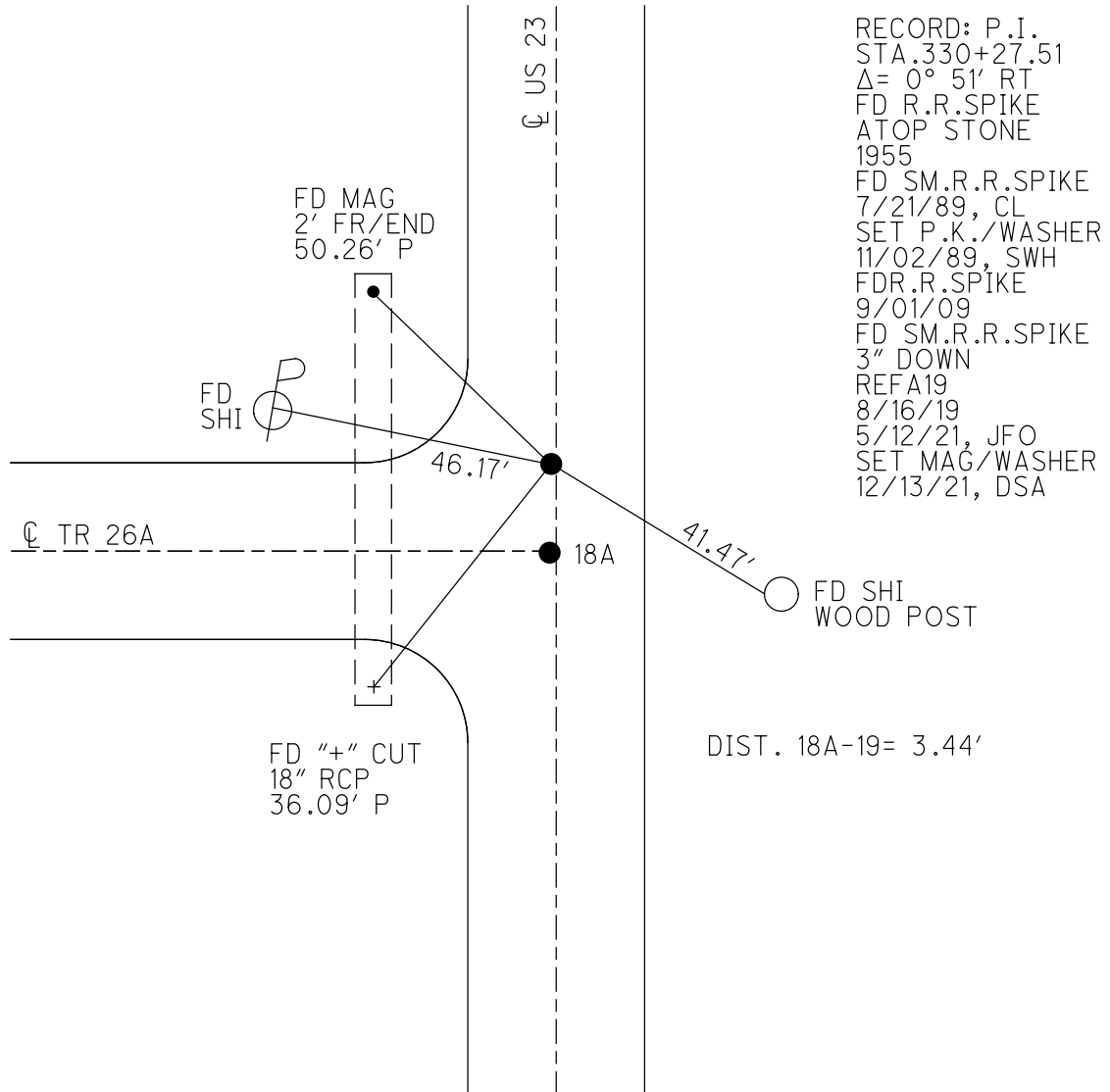
O.D.O.T. DISTRICT 2 SURVEY OFFICE (USE ONLY)

PERSONNEL \_\_\_\_\_ REFERENCE NO. 19 A SHEET 21 OF 22  
 NOTES O'DONNELL DATE 5/12/21 ROUTE US 23  
 H.C. AUBLE WEATHER SUNNY COUNTY SENECA  
 R.C. NIESE TEMP. 43° TOWNSHIP BIG SPRING  
 DWG BY RHOADES PID 85264 SECTION 6  
 T 1 N R 13 E

TYPE MONUMENT SM.R.R.SPIKE  
 ON ~~SURFACE~~ - BELOW 3"  
 OFFSET  $\text{C}$  PAVEMENT 0.6' LT : ~~RT~~  
 - TO - EDGE PAVEMENT  
 STATION: 330+27.51



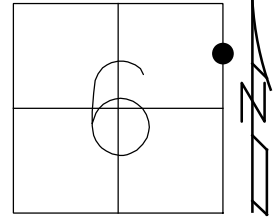
HORZ.DATUM: NAD83 2011 GEOID: NAVD88 2012A  
 GRID: NORTHING: 514663.066 EASTING: 1719856.110



O.D.O.T. DISTRICT 2 SURVEY OFFICE (USE ONLY)

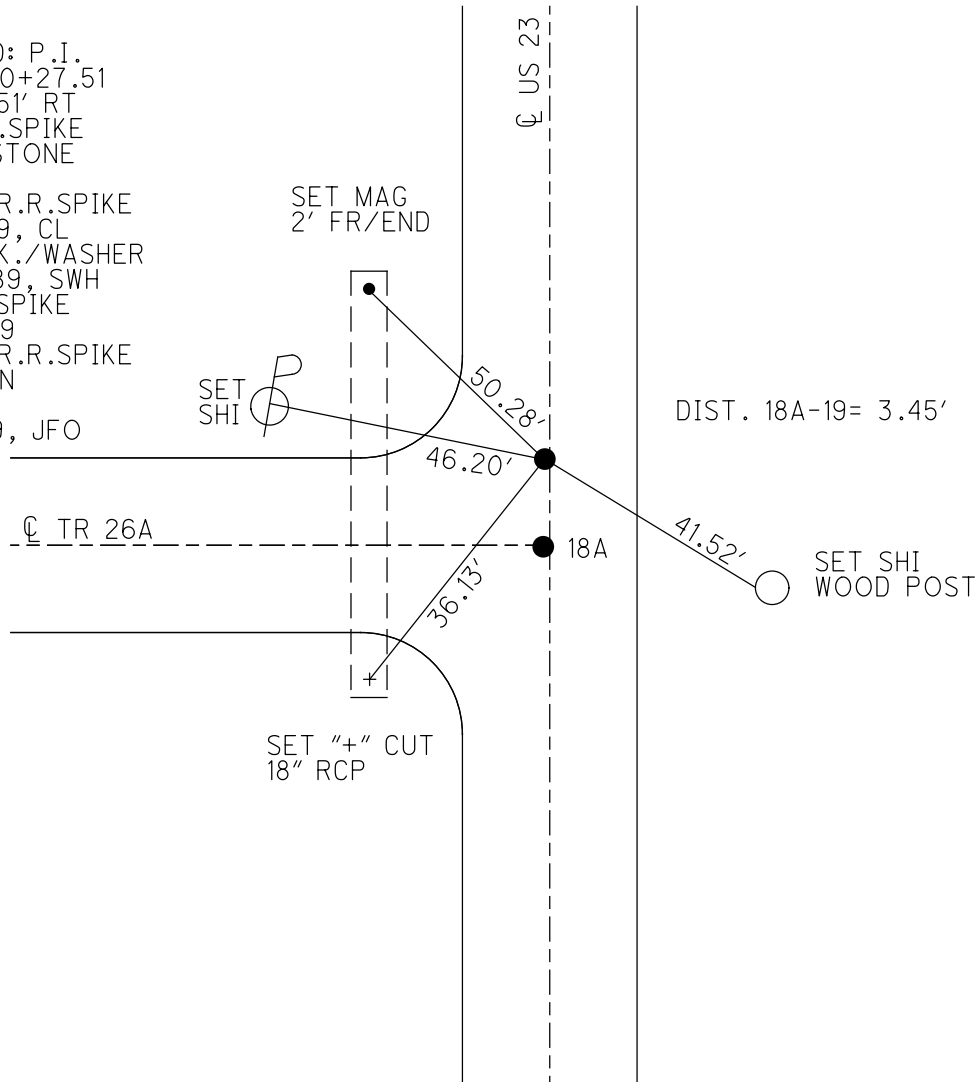
PERSONNEL \_\_\_\_\_ REFERENCE NO. 19 SHEET 20 OF 22  
 NOTES ELKHECHEN DATE 10/30/18 ROUTE US 23  
 H.C. LEU WEATHER CLOUDY COUNTY SENECA  
 R.C. MILLER TEMP. 43° TOWNSHIP BIG SPRING  
 DWG BY NASON PID PT-SEN19 SECTION 6  
 T 1 N R 13 E

TYPE MONUMENT SM. R.R. SPIKE  
 ON ~~SURFACE~~ - BELOW 3"  
 OFFSET Q PAVEMENT 0.6' LT : ~~RT~~  
- TO - EDGE PAVEMENT  
 STATION: 330+27.51



HORZ.DATUM: NAD83 (2011) GEOID: 2012A  
 GRID: NORTHING: 514663.066 EASTING: 1719856.110

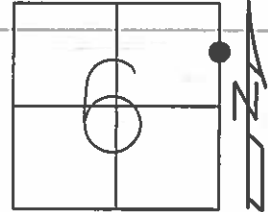
RECORD: P.I.  
 STA. 330+27.51  
 $\Delta = 0^\circ 51' RT$   
 FD R.R.SPIKE  
 ATOP STONE  
 1955  
 FD SM.R.R.SPIKE  
 7/21/89, CL  
 SET P.K./WASHER  
 11/02/89, SWH  
 FDR.R.SPIKE  
 9/01/09  
 FD SM.R.R.SPIKE  
 3" DOWN  
 REFA19  
 8/16/19, JFO



O.D.O.T. DISTRICT 2 SURVEY OFFICE (USE ONLY)

PERSONNEL \_\_\_\_\_ REFERENCE NO. 19 SHEET 20 OF 22  
 NOTES LOEHRKE DATE 07-21-89 ROUTE US 23  
 H.C. HOFFMAN WEATHER HAZY COUNTY SENECA  
 R.C. BARNHISEL TEMP. +80 TOWNSHIP BIG SPRING  
 \_\_\_\_\_ SECTION 6  
 \_\_\_\_\_ T 1 N R 13 E

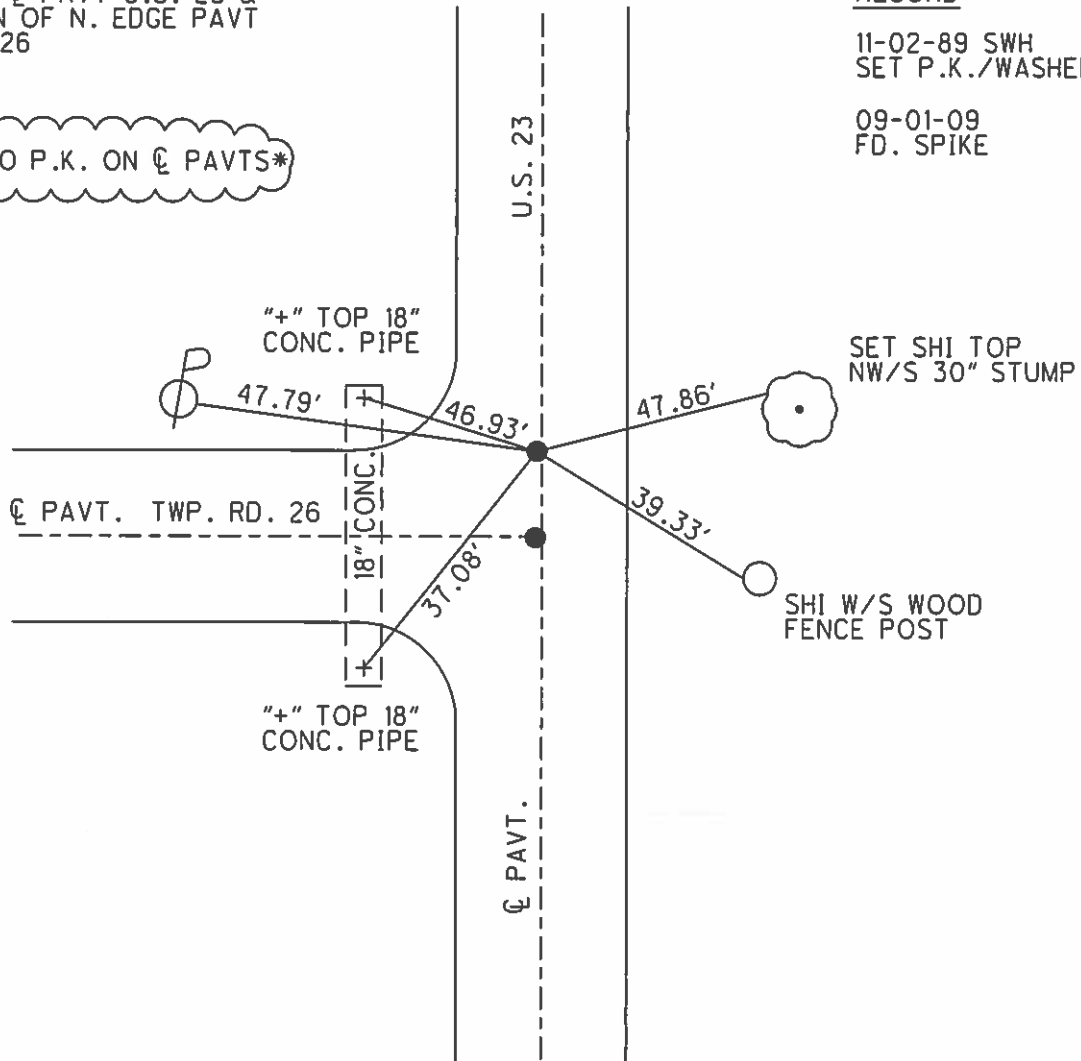
TYPE MONUMENT SM. R.R. SPIKE  
 ON SURFACE - ~~BELOW~~ ON SURFACE  
 LEFT - ℄ PAV'T - ~~RIGHT~~ 0.6'  
 \_\_\_\_\_ TO \_\_\_\_\_ EDGE PAVEMENT  
 S.L.M. 330+27.51  
 GRID: NORTHING: \_\_\_\_\_ EASTING: \_\_\_\_\_



0.6' LEFT ℄ PAVT U.S. 23 &  
 EXTENSION OF N. EDGE PAVT  
 TWP. RD. 26

RECORD  
 11-02-89 SWH  
 SET P.K./WASHER  
 09-01-09  
 FD. SPIKE

\*3.45' TO P.K. ON ℄ PAVTS\*



# O.D.O.T. DISTRICT 2 SURVEY OFFICE

PERSONNEL \_\_\_\_\_

REFERENCE NO. 19

SHEET \_\_\_\_\_ OF \_\_\_\_\_

NOTES LOEHRKE

H.C. HOPPMAN

R.C. BARNHISEL

DATE 7-21-89

WEATHER HAZY

TEMP. +80

ROUTE U.S. 23

COUNTY SENECA

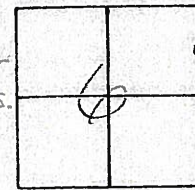
TOWNSHIP RIG SPRING

SECTION 6

T. \_\_\_\_\_ R. \_\_\_\_\_

TYPE MONUMENT A Small R.R. Spikes  
 ON SURFACE - BELOW YES  
 LEFT - C PAV'T. - RIGHT 0.6  
12.5 TO Rt EDGE PAVEMENT  
 S.L.M. Pt B - 328+59

B - P.K.  
 Set P.K./washer  
 at both points.  
 11-2-89 scott

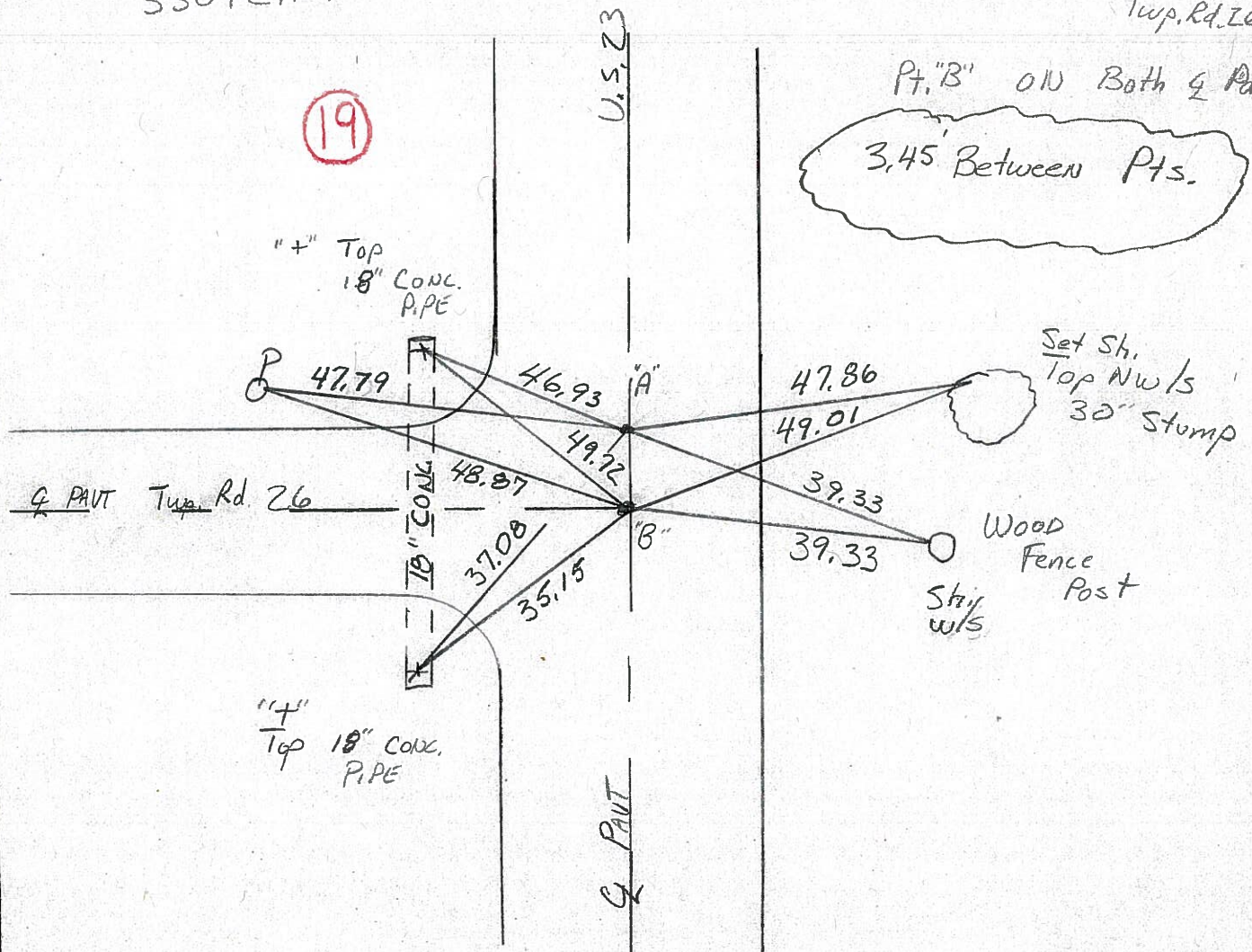


Rec. Pt "A" P.I. Sta  
 330+27.51

Pt "A" ON C PAUT U.S. 23  
 ON N. EDGE PAUT  
Twp. Rd. 26

Pt. "B" ON Both C PAUT

3.45 Between Pts.



OD.O.T. DISTRICT 2 SURVEY OFFICE

Sht. \_\_\_ of \_\_\_

County Seneca S.R., U.S. 23

Date 6-23-81

Township Big Spring

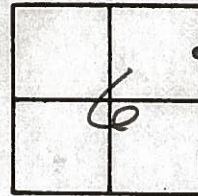
Weather Clear

Section 6

Temp. +70°

T. N, R. E

Personnel Hoffman



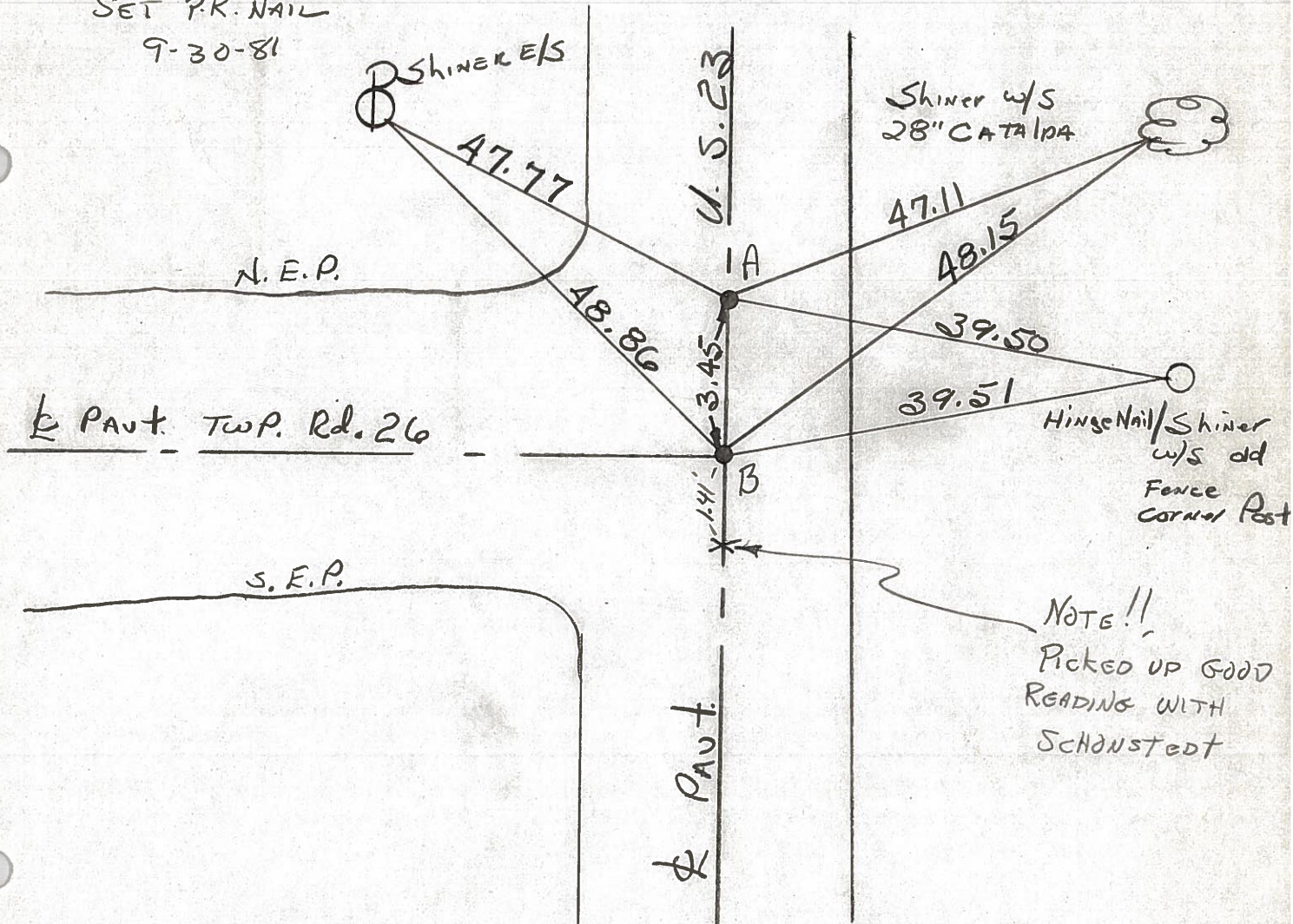
Hauscholder  
\_\_\_\_\_  
\_\_\_\_\_  
\_\_\_\_\_

#19

Pt. "A" Fd. P.K. Nail/Washer @ surface PROJECT STA ± 328+86  
 @ ctr of PAUT US 23 SET SMALL R.R. SPK. 9-30-81 SWH  
 @ N. Edge PAUT Twp Rd 26

Pt. "B" Fd. P.K. Nail @ surface  
 @ ctr of PAUTS, US 23 & TWP 26

SET P.K. NAIL  
 9-30-81



Pt. "A" = P. I. STA. 330 + 27.51 - REC

PERSONNEL	TITLE	PERSONNEL	TITLE	COUNTY	DATE	WEATHER	TEMP.
Schneider				Seneca	8-27-69	Fair	70°
Mosser				S. R. U.S. 23			
Barbour				SEC.			
Potts							
DESCRIPTION				Ties for Control Points		JOB NO.	
LEFT		CENTER LINE		RIGHT			

